

Lancaster as a Town

Lancaster itself

- Compact town from the Roman invasion
- Well served with restaurants and good pubs (also bad pubs, be we can guide you!) and a brewery
- A genuine castle (law courts/bijou hotel)
- A Priory and a Cathedral
- A former port, then the linoleum capital of the world!

In images

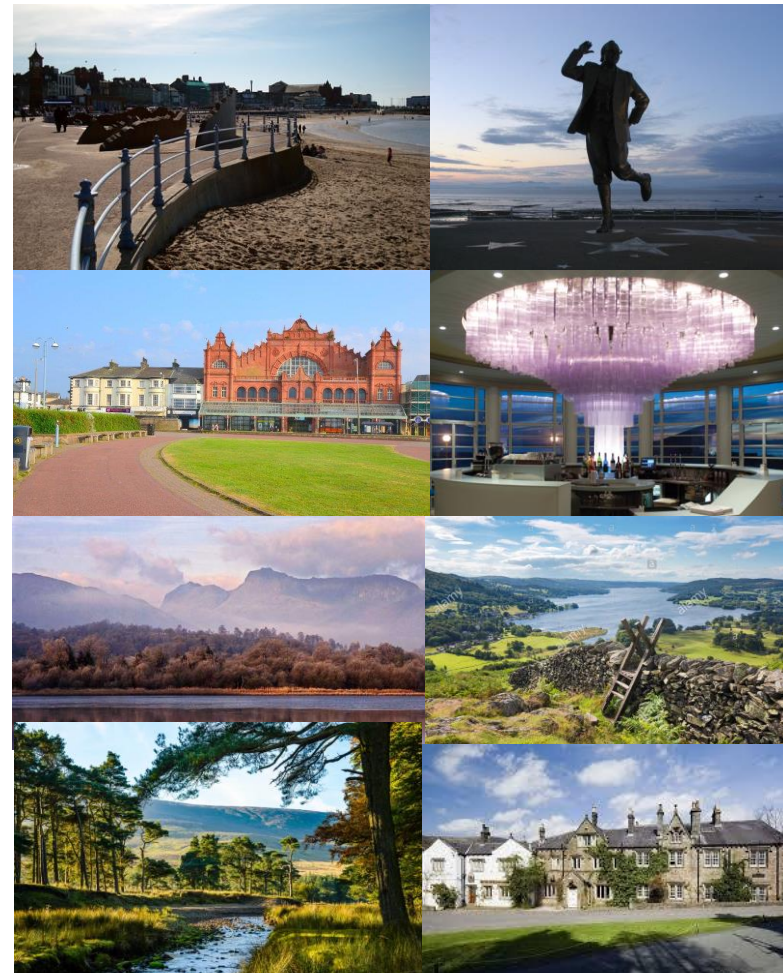


Lancaster region

In reality joined to Morecambe

- 'Fading' coastal seaside town
 - Remarkable views of Lakes
 - Many art deco buildings
 - A famous and restored hotel, which features in many TV programmes
- If you want to stay on, you can be in the heart of the Lake District and into the Forrest of Bowland in under an hour, both of which are beautiful and 'fine dining' hotspots

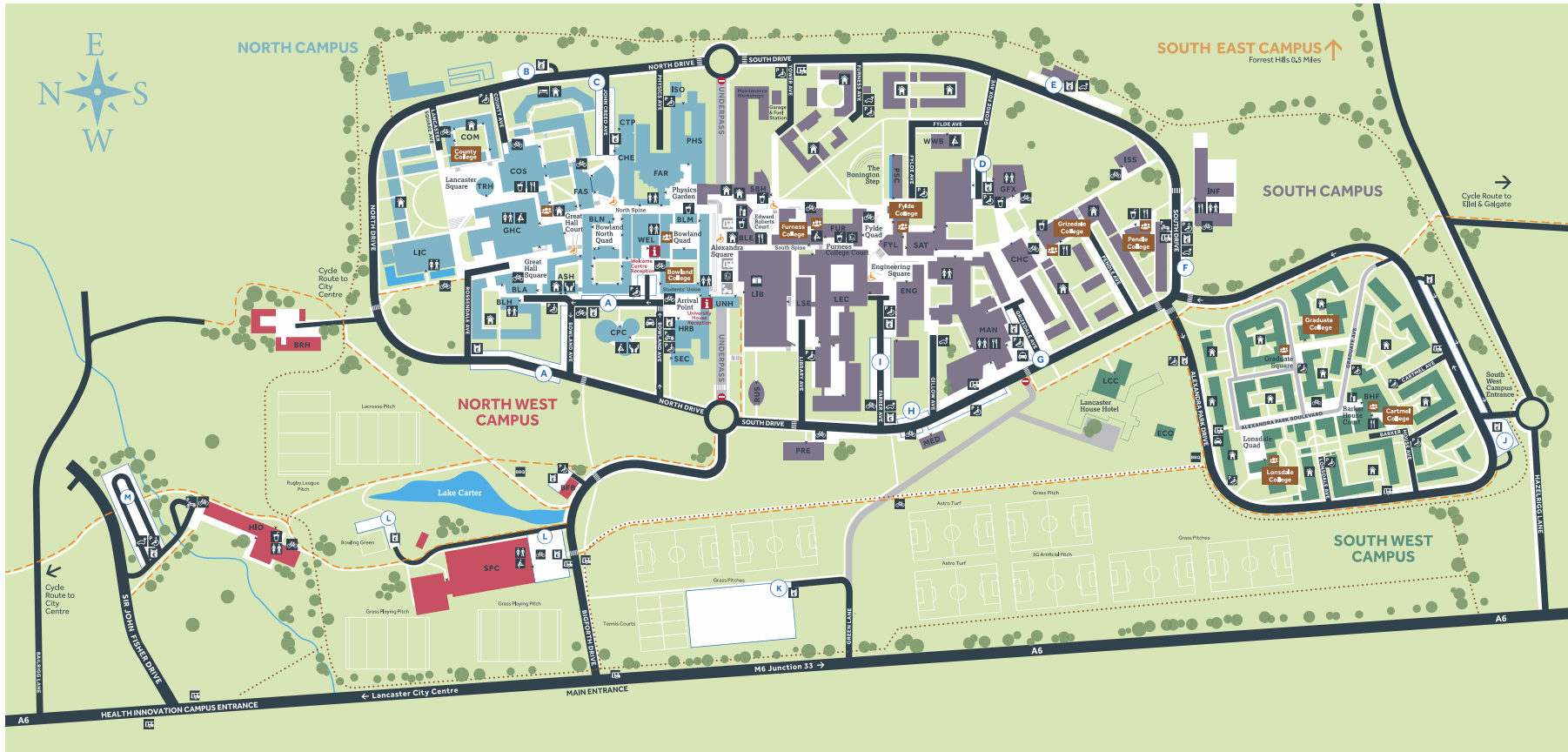
In images



Lancaster University - Orientation



Lancaster Campus



Tea, coffee, lunches in Private Dining Room (except Weds when we relocate to the Training Rooms)

WLCG Dinner – Depart 18:30



Buses on corner of John Creed Avenue

WLCG Dinner – 19:30, depart 23:00 Monday night

Dinner at Midland Hotel Morecambe



*3 course Dinner with Wine
Time for a drink in the
Rotundas Bar beforehand*



Reception – 19:30, depart 23:00
Tuesday night from 18:30-10:30

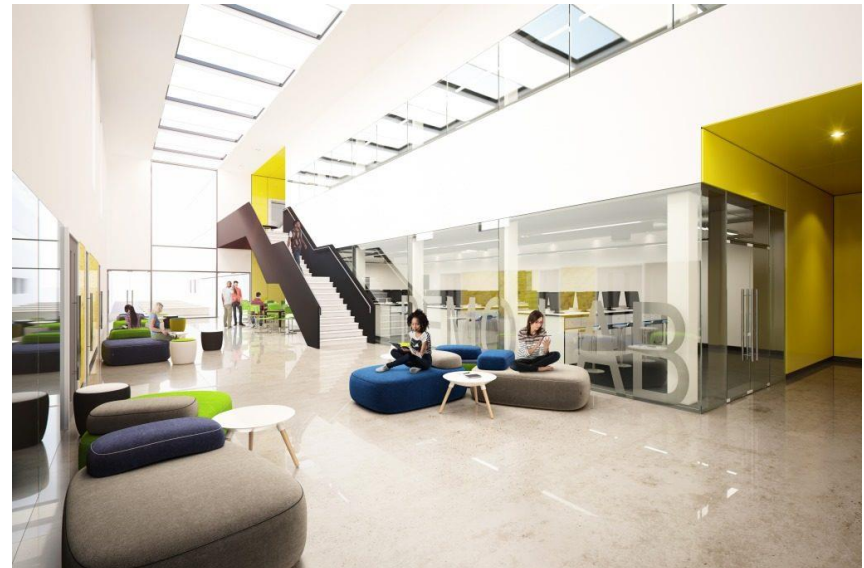
Atrium of Physics Building



Enter off the North Spine

*Local Beer in barrels, non-local
wine*

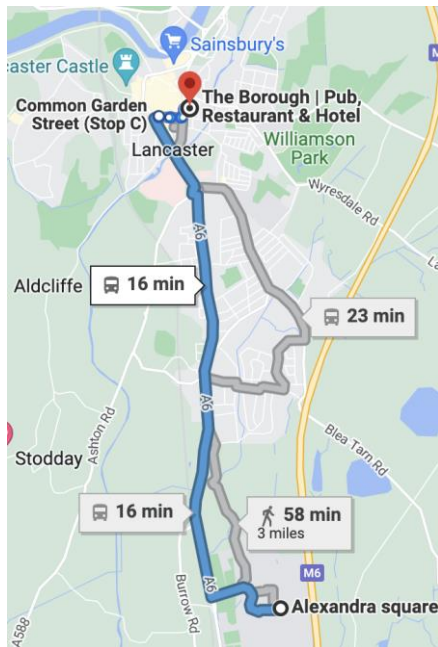
Pizza, soft drinks etc



Transport

Buses into town – 1A is fastest

- Last bus from Common Garden St Stop A is just after 23:50
- Buses depart Uni from Underpass beneath Alexandra Square



Taxis

- Two main taxi firms
- 01524 32090
- 01524 848848
- Centre to University about £10

Rucio Dinner – 19:30 at the Borough, Dalton Square

Bus to Infirmary or Common Garden St



*Shared appetizers, choice of
main and dessert (survey link
circulated by email, we must
pre-order)*

Wine and water provided, we may
also provide some jugs of beer
You can also buy at the bar!

