



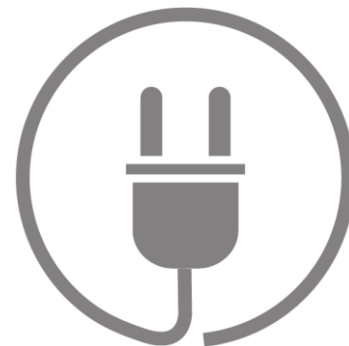
HEP Benchmark Suite: Energy measurement plugin

Gonzalo Menéndez Borge
CERN IT

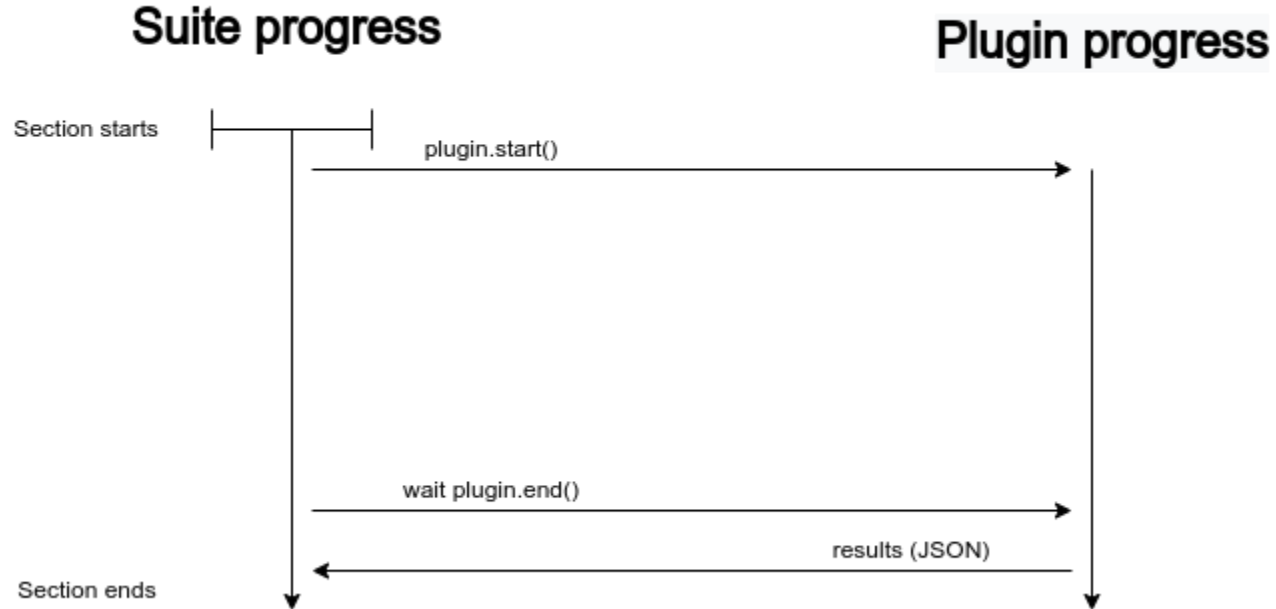
IT-GOV-ENG Section Meeting
13 December 2022

Time-based plugins

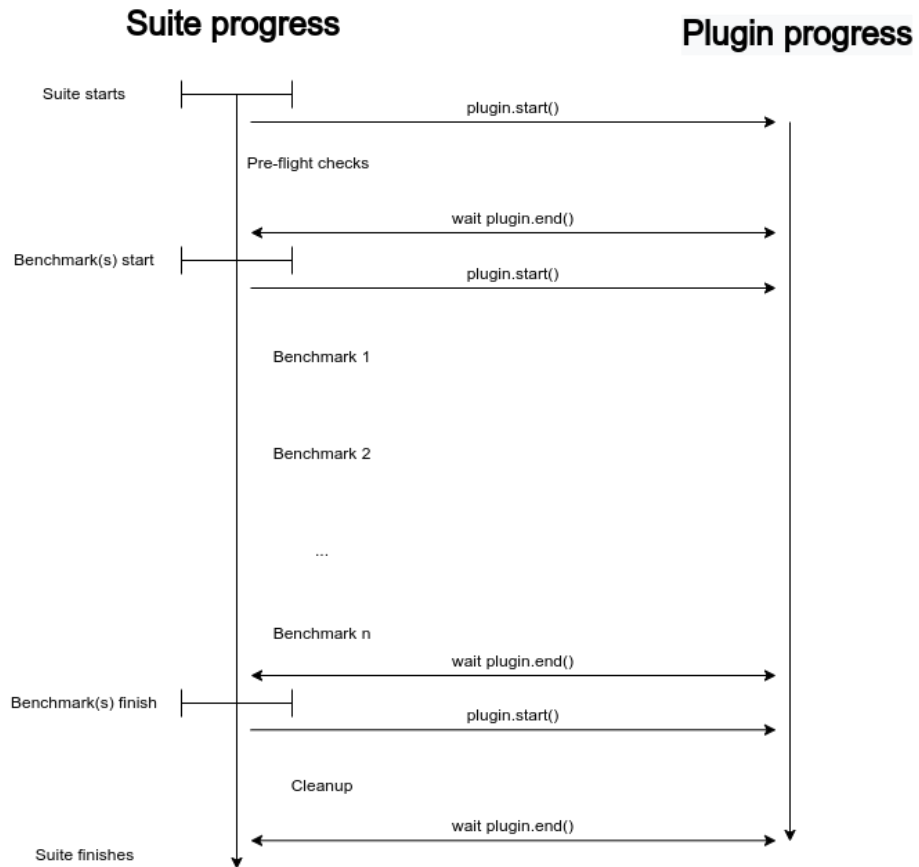
- ❑ Existing plugin: *exporter*
 - name, HW, SW, IP, geolocation...
 - Time-agnostic
 - Results will be the same regardless of when it's called
- ❑ New needs arise: time-based plugins
 - Measurements change before, during and after the benchmarks
 - Challenges:
 - Know when this phases start/end
 - Run the plugin in parallel
 - Ensure synchronization between processes where needed
- ❑ Modular design
 - Interfaces
 - Python ABC (Abstract Base Class)



Section Flow Chart



Full Flow Chart



Results

❑ New result document section: plugins

- Each time-based plugin will have its dedicated section here
 - Each section is divided in the reports from the 3 stages:
 - pre-run
 - run
 - post-run

❑ Final naming convention still being decided on 😊

```
{
  "suite": { ...
},
"profiles": { ...
},
"host": { ...
},
"plugins": {
  "energy": {
    "pre-run": {},
    "run": {},
    "post-run": {}
  }
}
}
```

Q&A