



# WCTE Construction schedule

*Jorge Pelegrín  
Pablo Fernandez*



LSC

Laboratorio Subterráneo de Canfranc

## Recap of the preparation times and quotations:

Tendering process of the tank and PMT structure:

- Time needed for paperwork and tender ~4.5 months

Quotations from companies obtained late 2021:

- Average cost of ~150 k€
- Transport to CERN ~10 k€
- Production 3-4 months
- Delivery to CERN 1-2 weeks

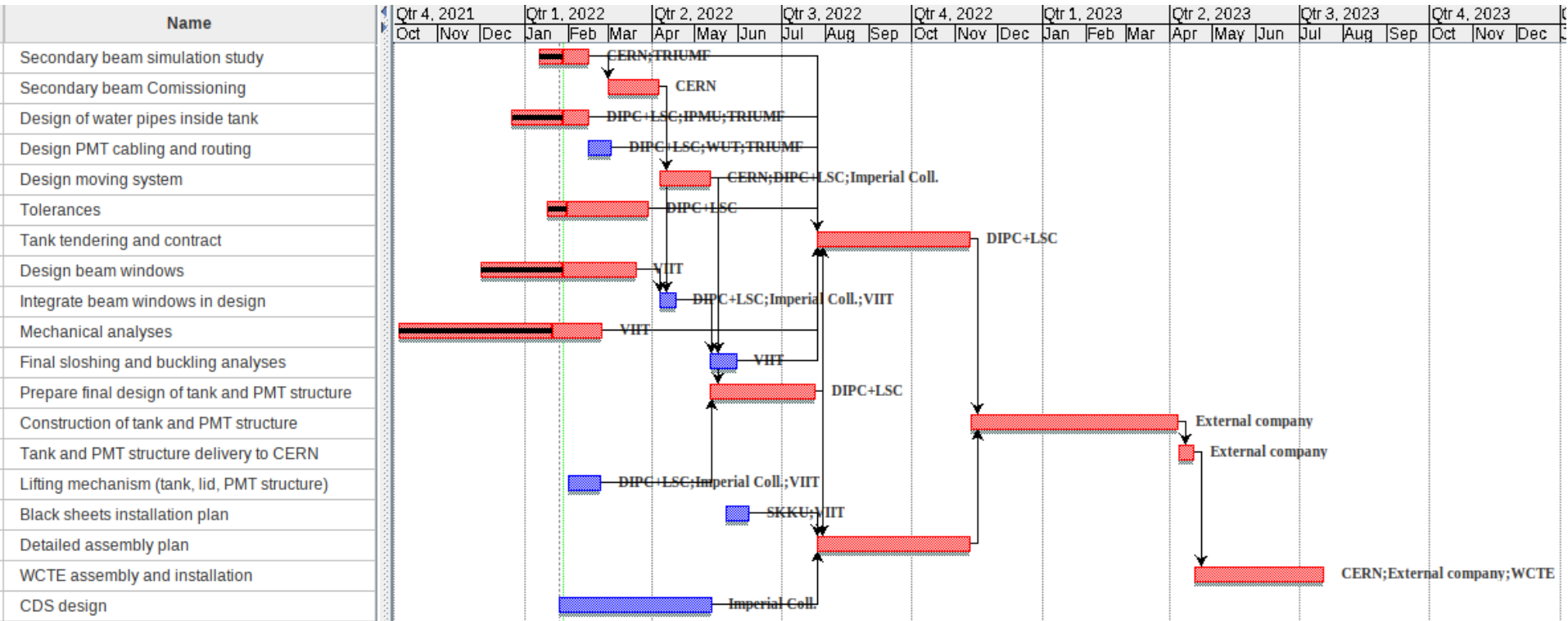
With the current situation quotations expected to change.

An increase of 20-30 % maybe reasonable but costs are constantly changing.

These tank costs are included in the budget of LSC for 2023.

Any increase due to extra items on the design will need to be discussed.

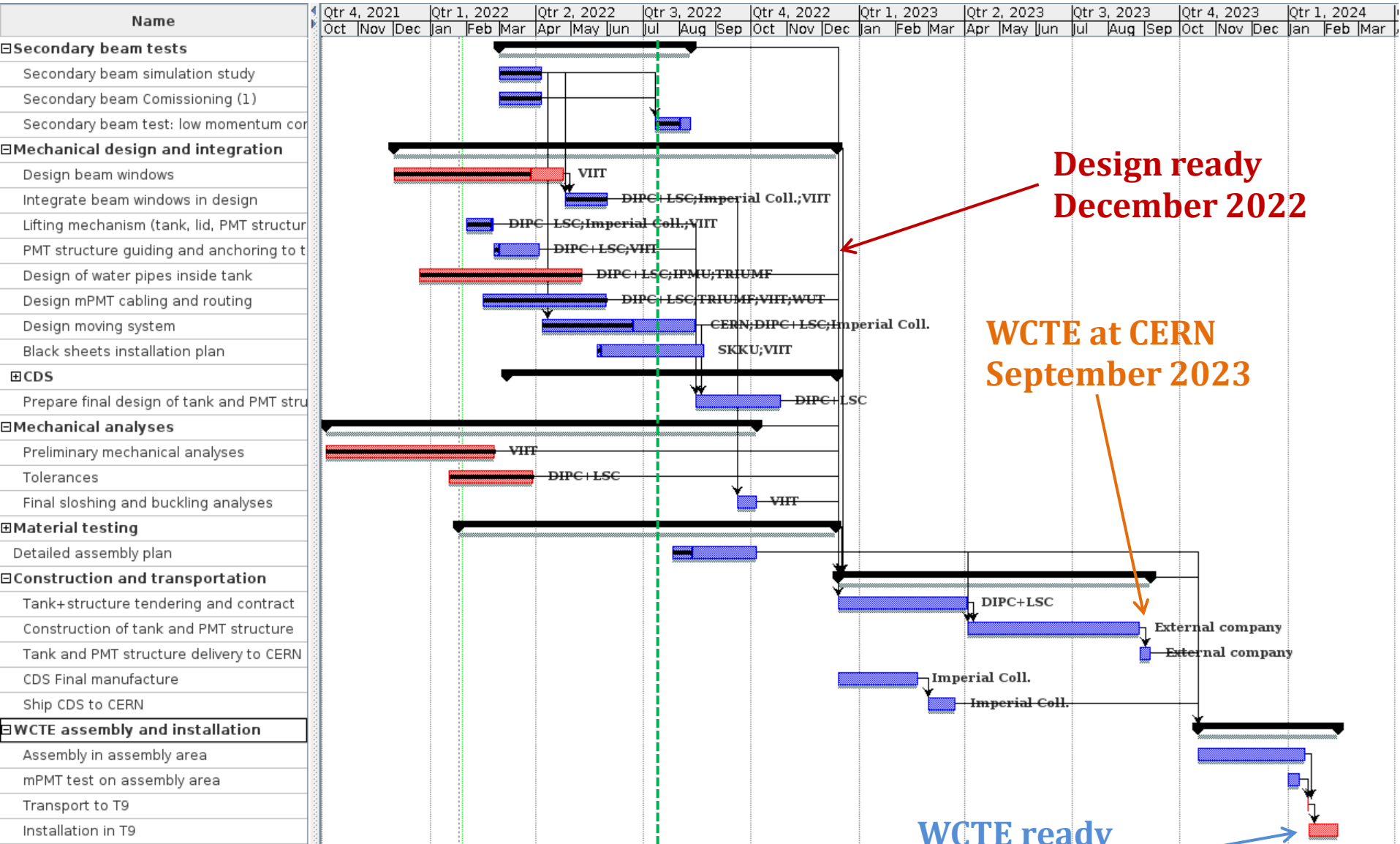
New quotations will be obtained once the design is finished.



WCTE installed at CERN in summer 2023

Design had to be fixed in August 2022

Beam time delayed until March 2024 -> Schedule re-designed



**Design ready  
December 2022**

**WCTE at CERN  
September 2023**

**~ July 19**

**WCTE ready  
Early 2024**



LSC

Laboratorio Subterráneo de Canfranc

Pending

## **Ongoing discussions on design:**

Decision on number of beams will affect:

- Moving system.
- Beam windows (retractable hose needed?).
- Tank base.

Size of the tank depending on available room at T9.

Routing of cables, bending radius, plugs.

Water pipes connections (might be affected by movement of tank between beams).

Tank lid ports for instrumentation and pipes.

Installation of black sheets.

Tolerances: mainly set by manufacturing companies.

Lifting and guiding points for tank/structure.

## **Ongoing discussions on assembly:**

- Assembly location to be confirmed.
- Assembly procedure and movement being prepared.
- Testing of mPMTs during assembly.
- Lifting equipment provided by CERN.