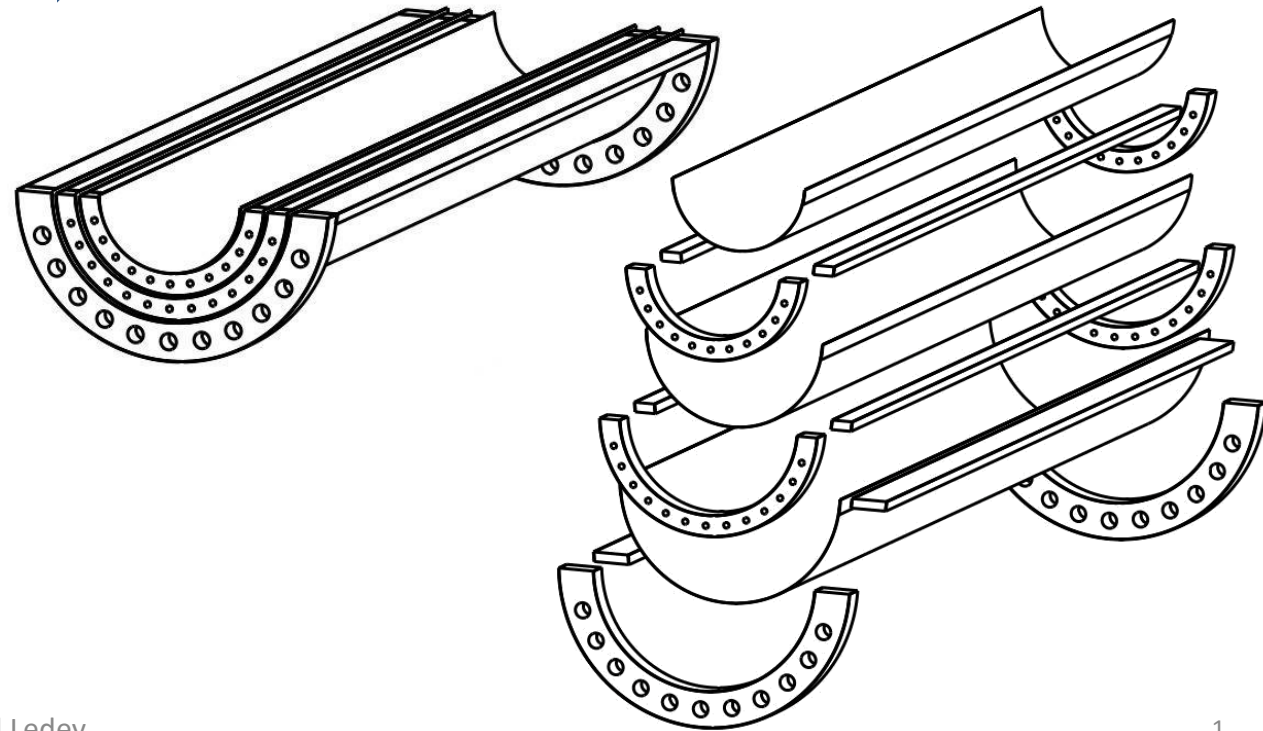
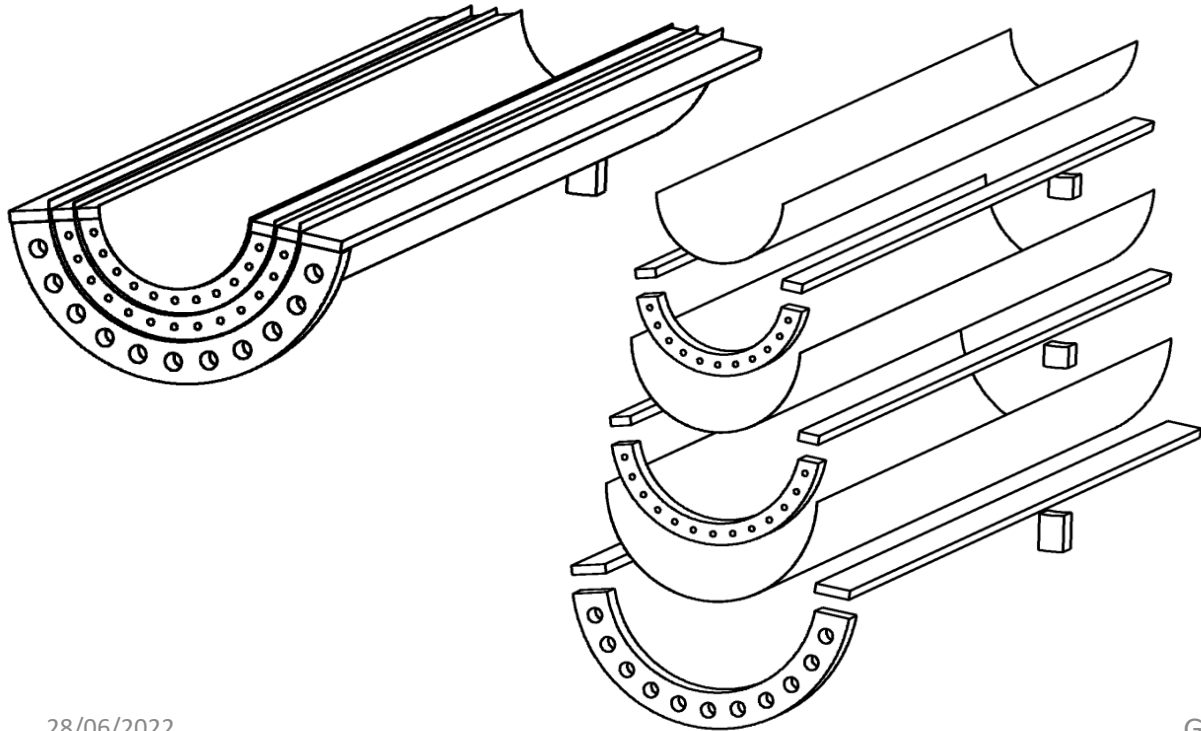
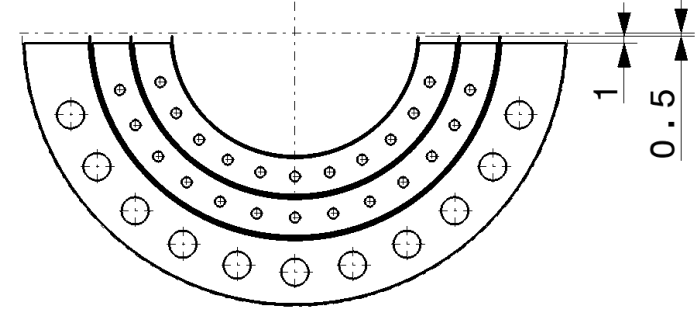
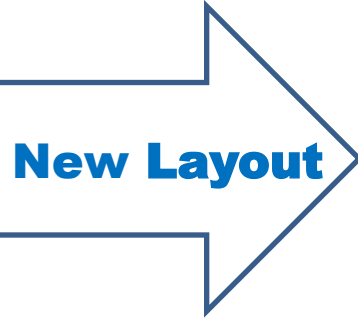
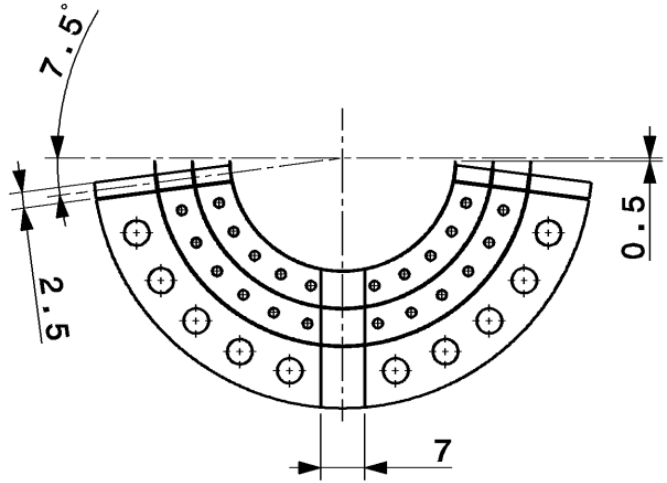
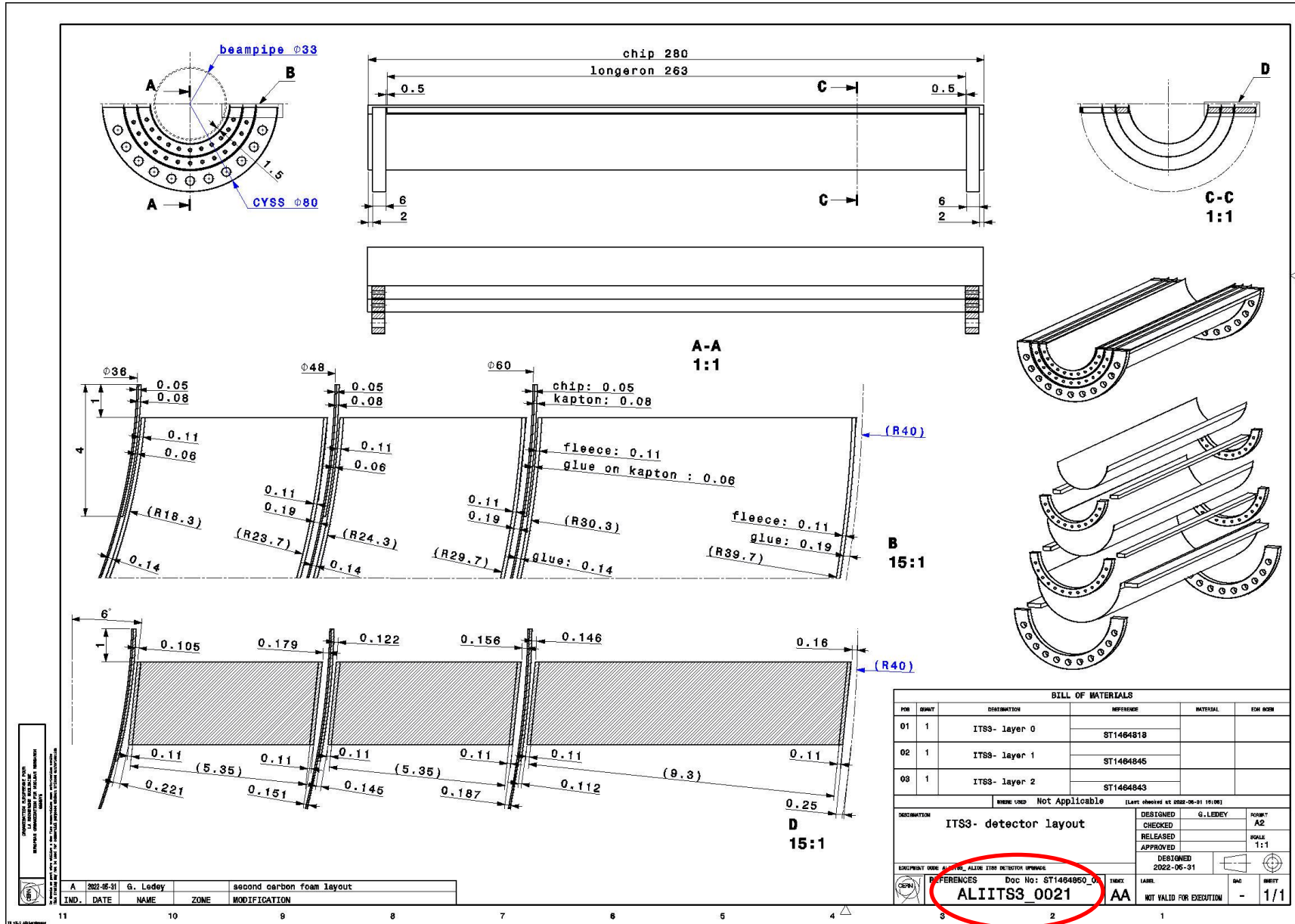


ITS3 Layout updates :

Second half ring on C-side
Shorter longerons between half rings and horizontally positioned

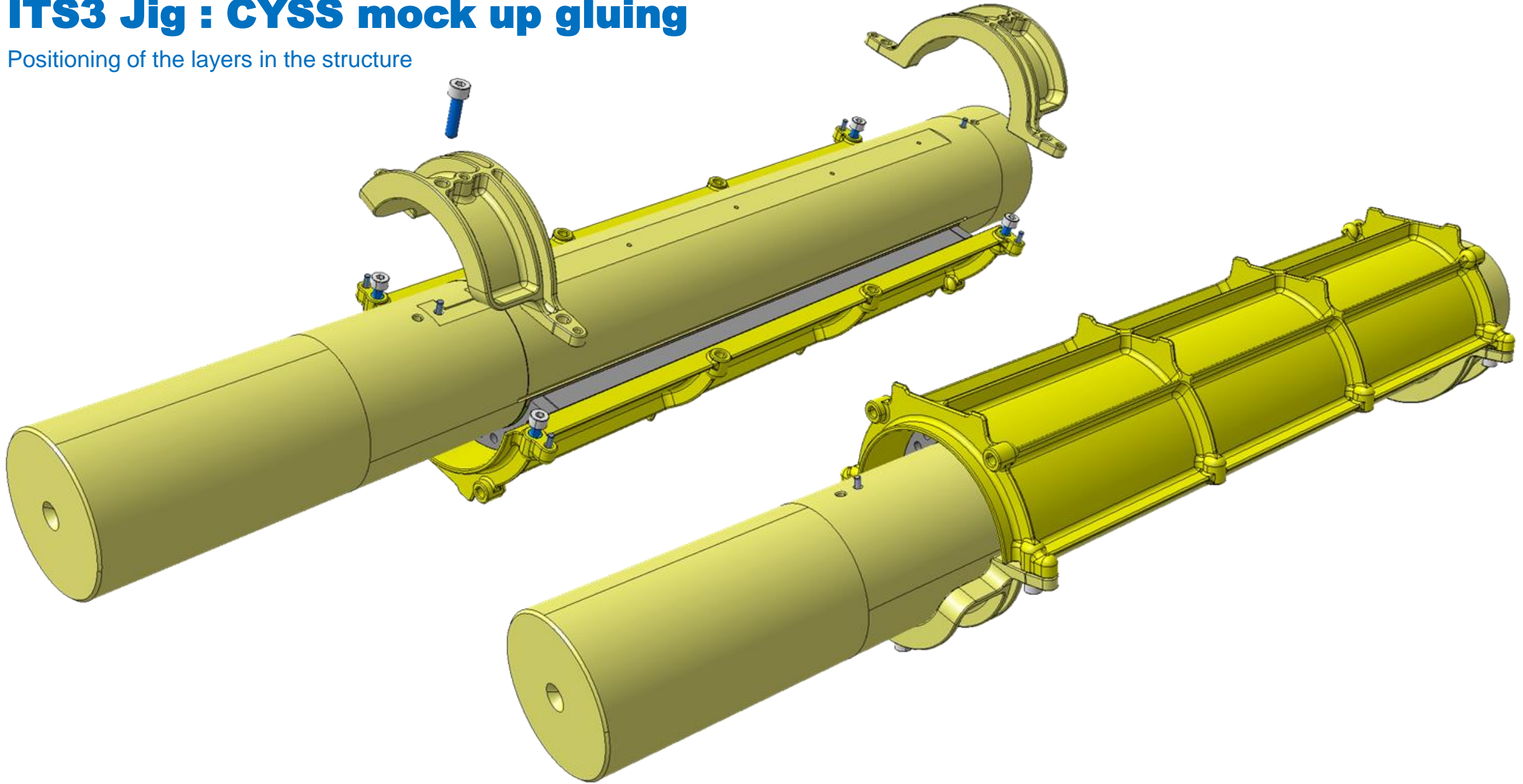


ITS3 Layout updates : Evolution of the glue and fleece thickness following Pieter's prototypes



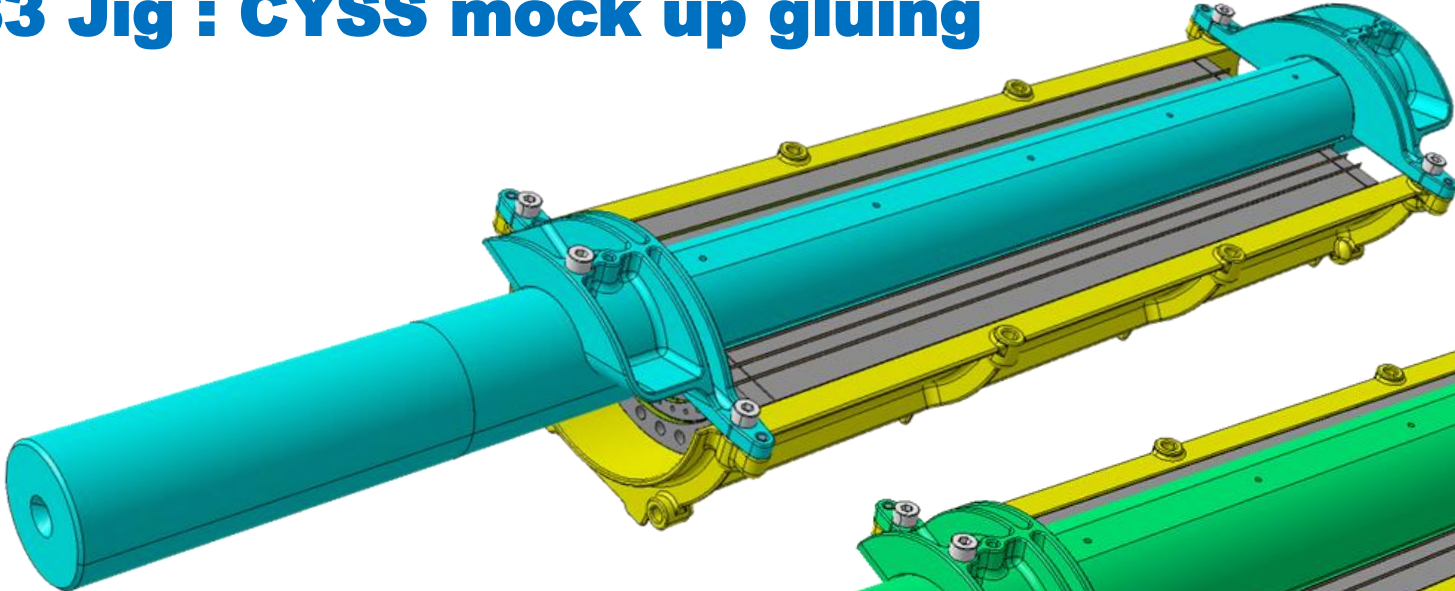
ITS3 Jig : CYSS mock up gluing

Positioning of the layers in the structure

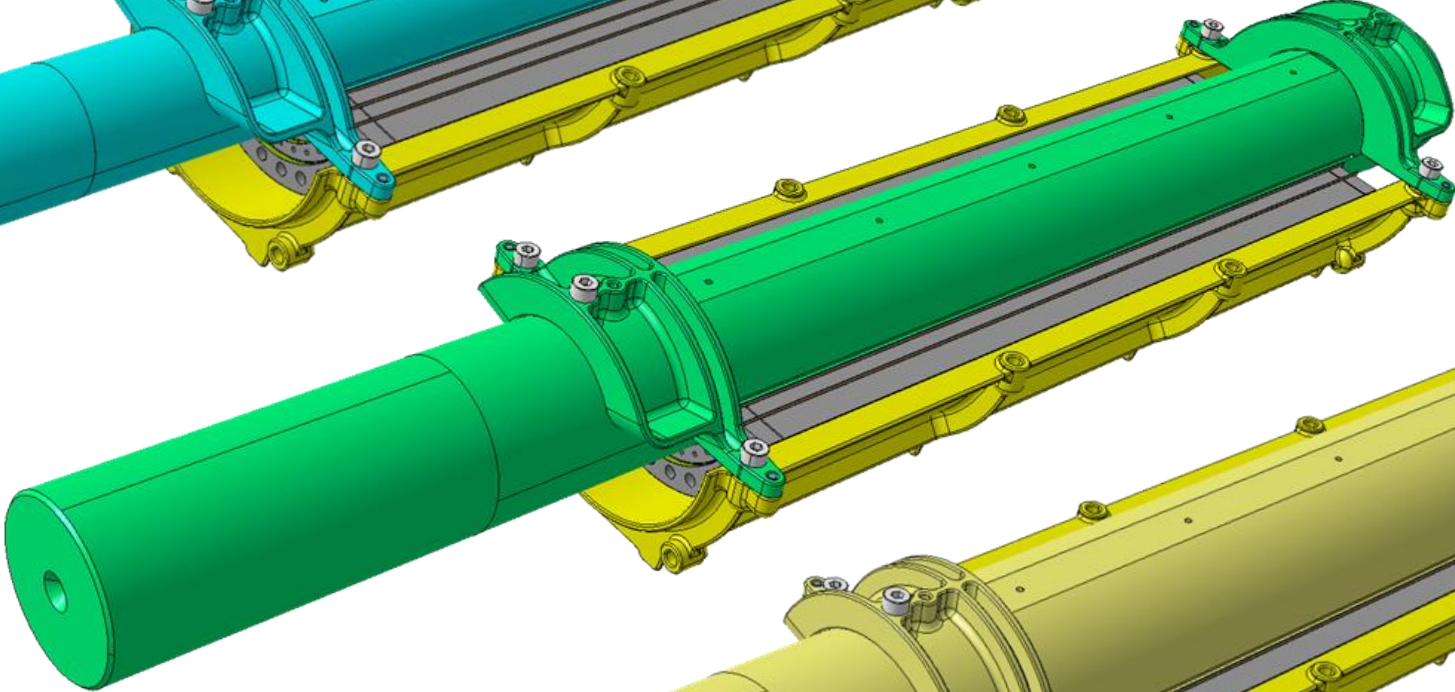


ITS3 Jig : CYSS mock up gluing

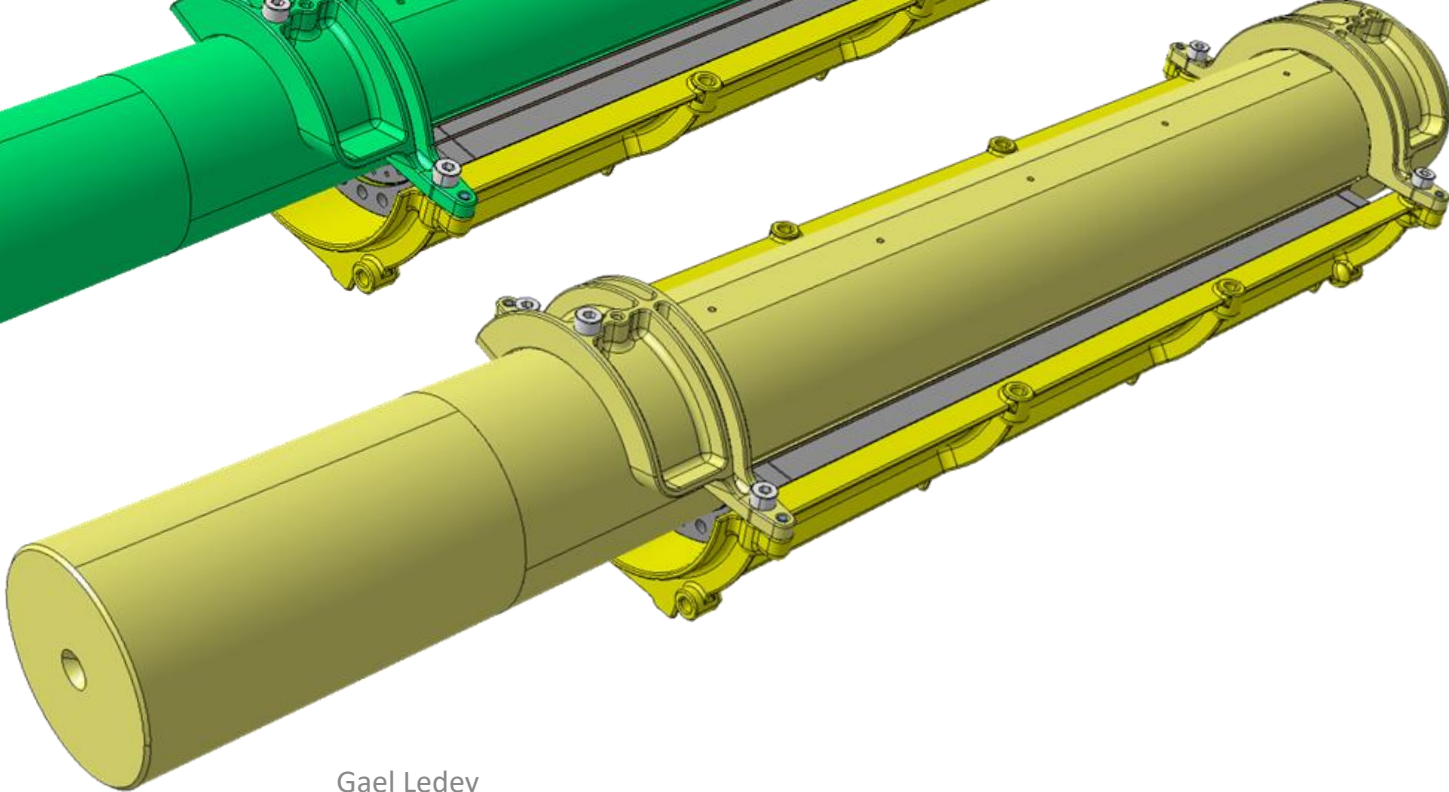
L0



L1

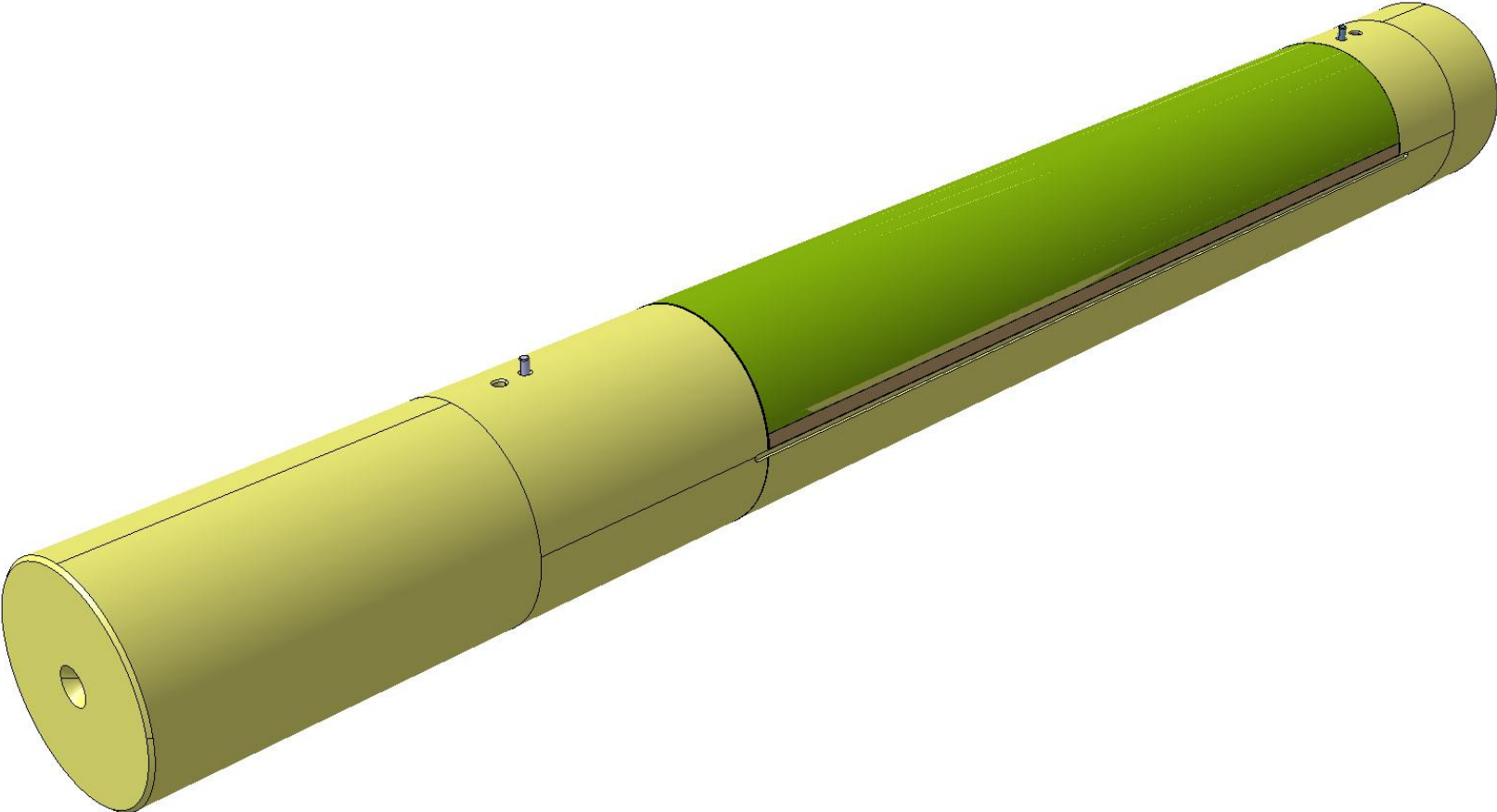


L2



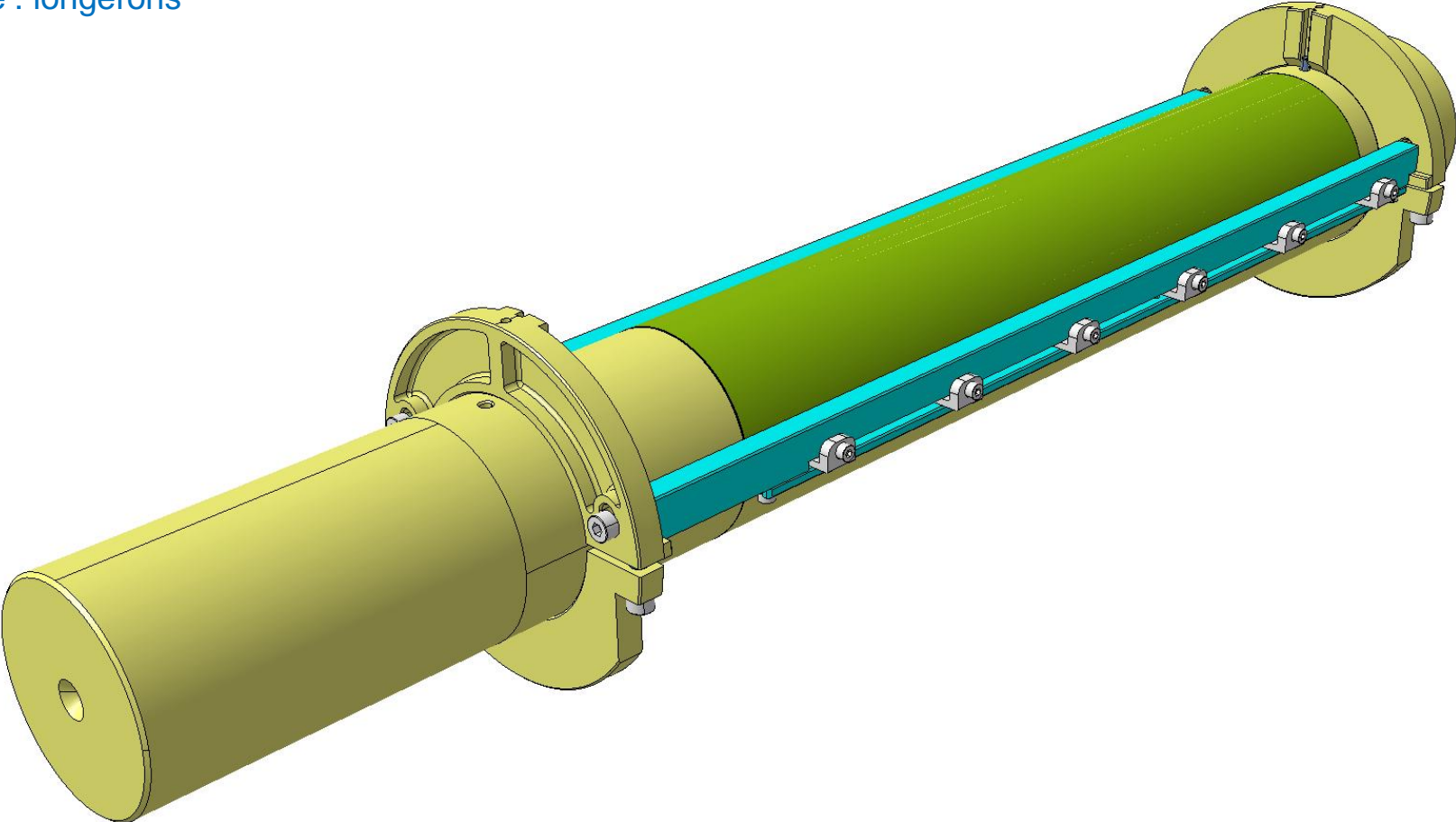
ITS3 Jig : Carbon Foam gluing

Carbon foam gluing sequence



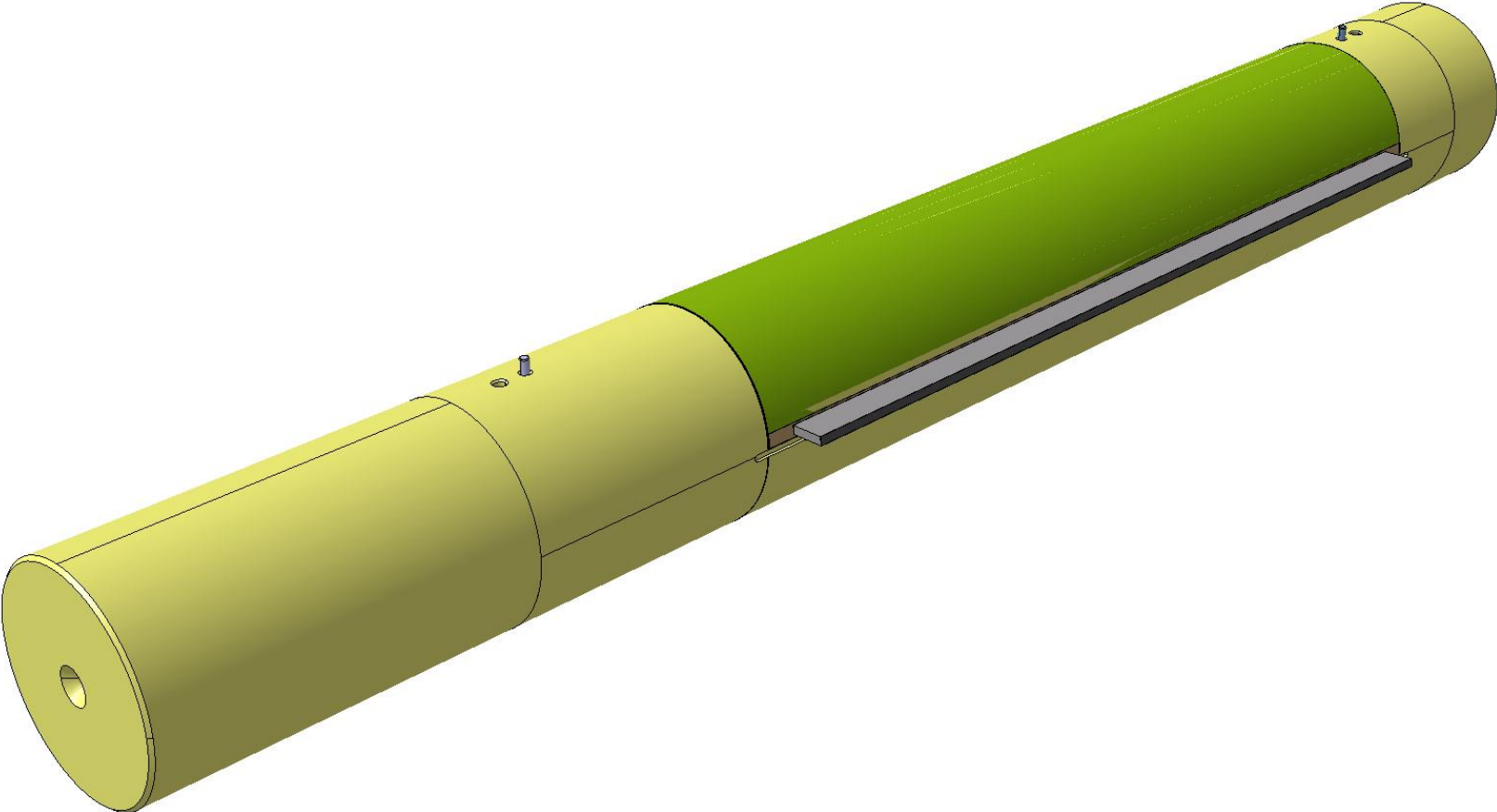
ITS3 Jig : Carbon Foam gluing

Carbon foam gluing sequence : longerons



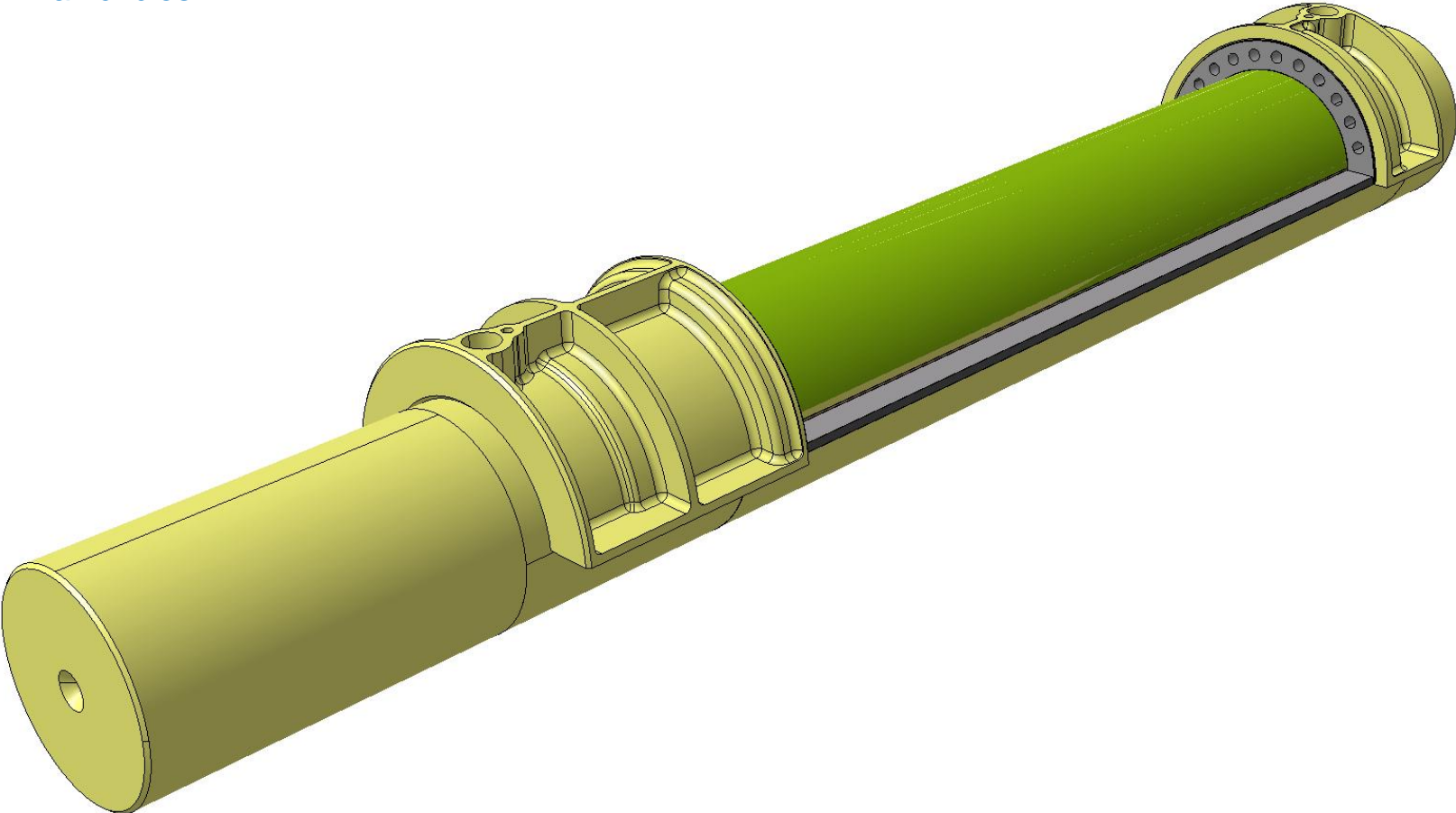
ITS3 Jig : Carbon Foam gluing

Carbon foam gluing sequence : longerons



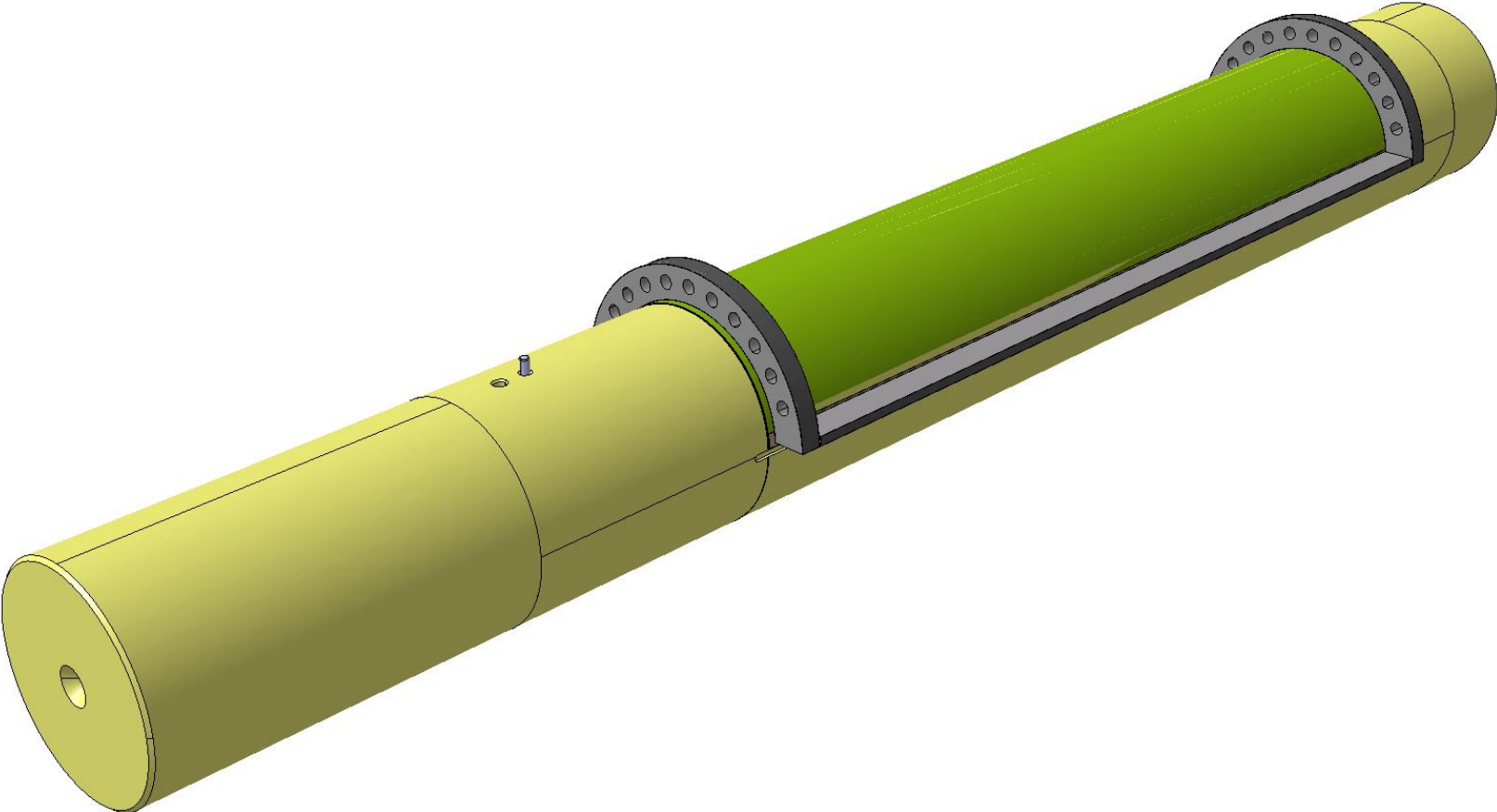
ITS3 Jig : Carbon Foam gluing

Carbon foam gluing sequence : half circles

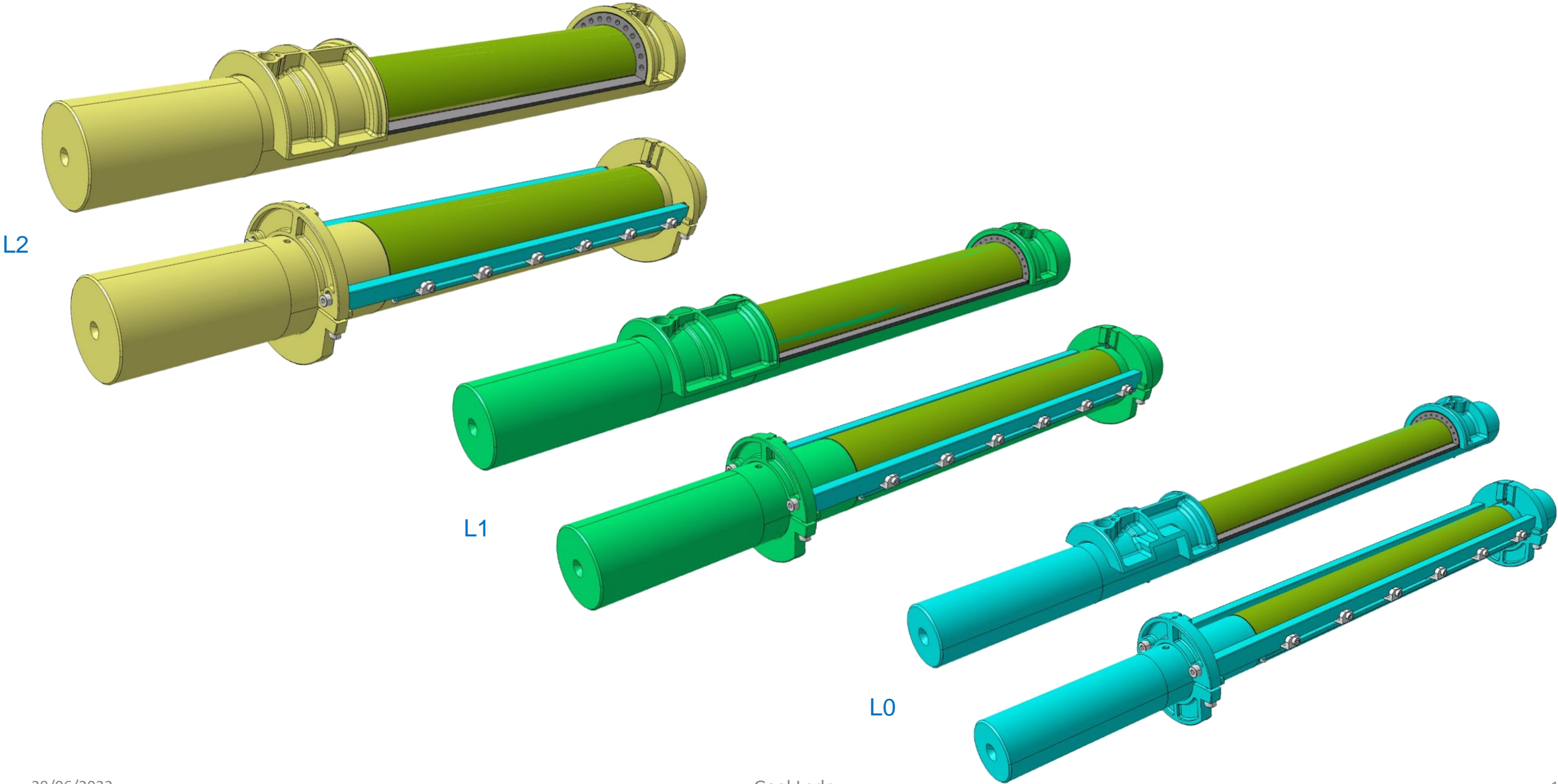


ITS3 Jig : Carbon Foam gluing

Carbon foam gluing sequence : half circles



ITS3 Jig : Carbon Foam gluing

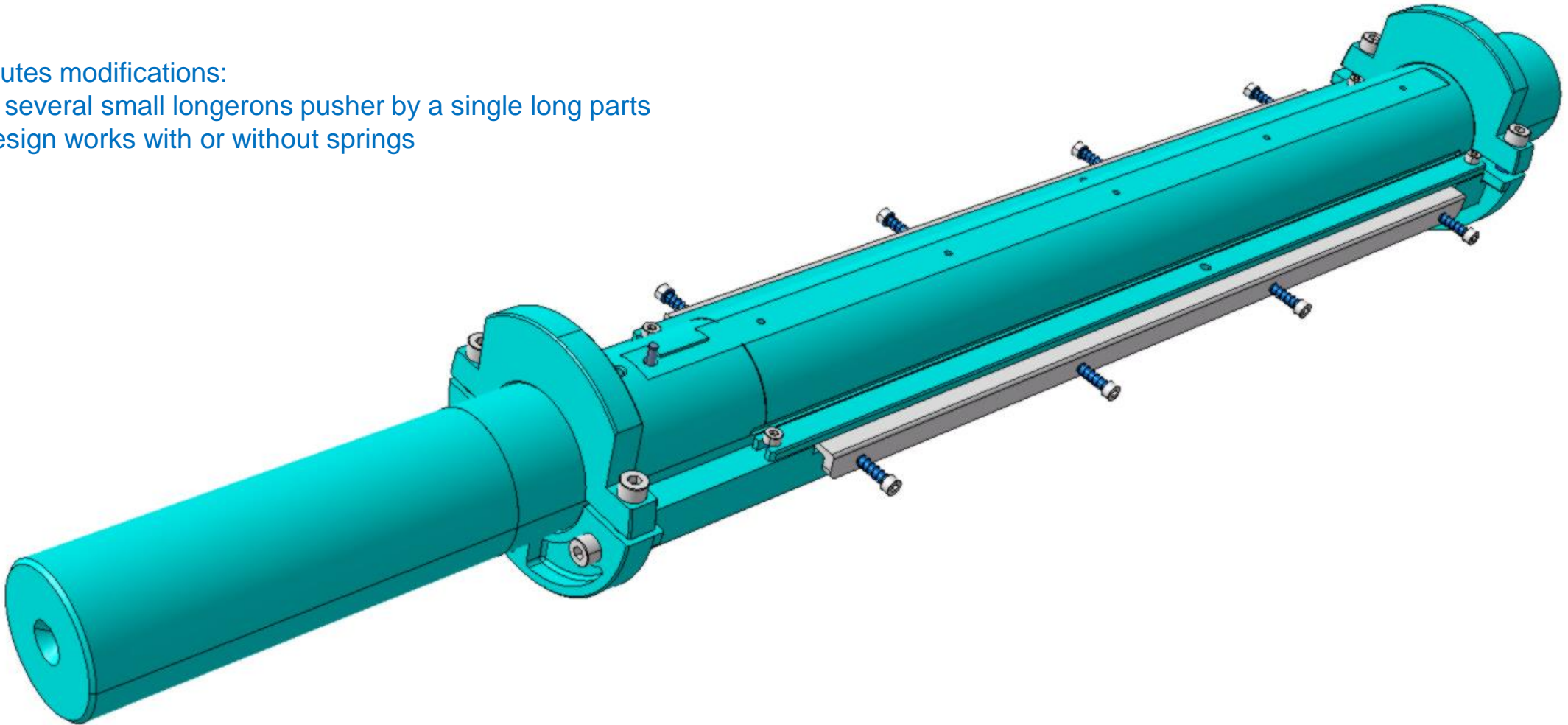


ITS3 Jig : Carbon Foam gluing

Last minutes modifications:

Replace several small longerons pusher by a single long parts

Same design works with or without springs



ITS3 Status:

Given to the workshop on the 23/06
Carbon foam drawings for all layers
Gluing mandrels modifications drawings

In progress
Step files for the 3d printing order of the gluing jig parts