

# Update On Scientific Linux

Troy Dawson  
dawson@fnal.gov

Hepix Spring 2011  
May 4, 2011



# Favorite Comments



Nicolas Kovacs concerning switching from CentOS to SL  
“...I expected some sort of refugee camp, and I'm the more pleasantly surprised to find it's a four star hotel. “

Ian Murry comparing SL and CentOS developers.  
“... They [SL developers] appear to always be polite and helpful even if the question was easily google-able.”



# Scientific Linux



- Presentation Overview
  - The last six months
  - What we are currently working on
  - What we see in the future



# Scientific Linux

## The Past Six Months



- The following statistics were gathered from [ftp.scientificlinux.org](http://ftp.scientificlinux.org) log files
  - These numbers are a minimum. We know that the real numbers are higher.
  - These numbers are based on the yum access to the errata
  - In 2010 we started counting the machines that download the distro mirrorlists. We do not know the architecture of these machines, so they have been labeled as “noarch”
  - In 2011 we added statistics based on total number of downloads versus unique IP address downloads.
  - We currently have 38 public mirrors, and know of 601 sites mirroring us. These statistics do not represent any of the mirror sites.

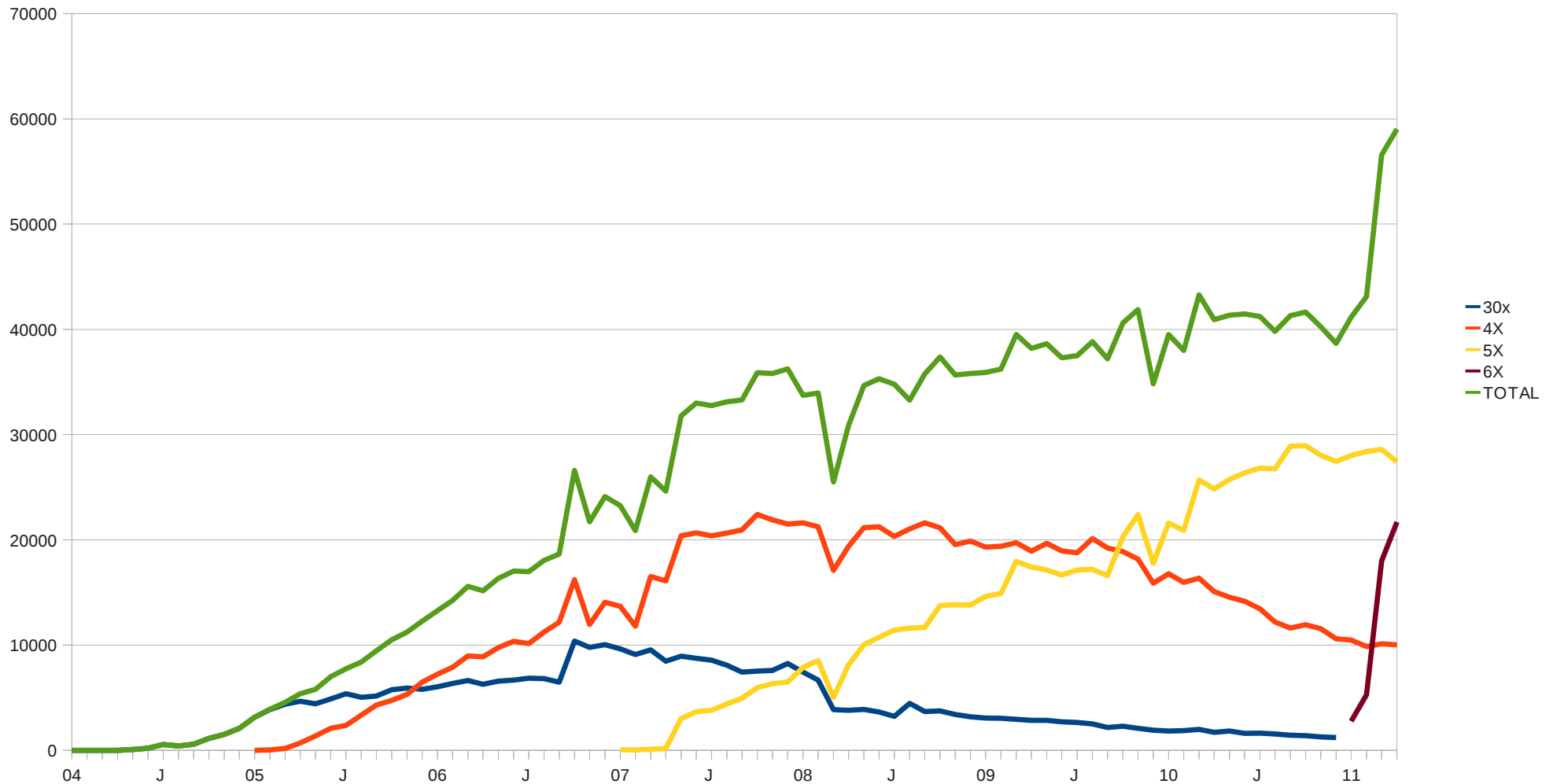


# Scientific Linux

## The Past Six Months



2004 to Present - By Release



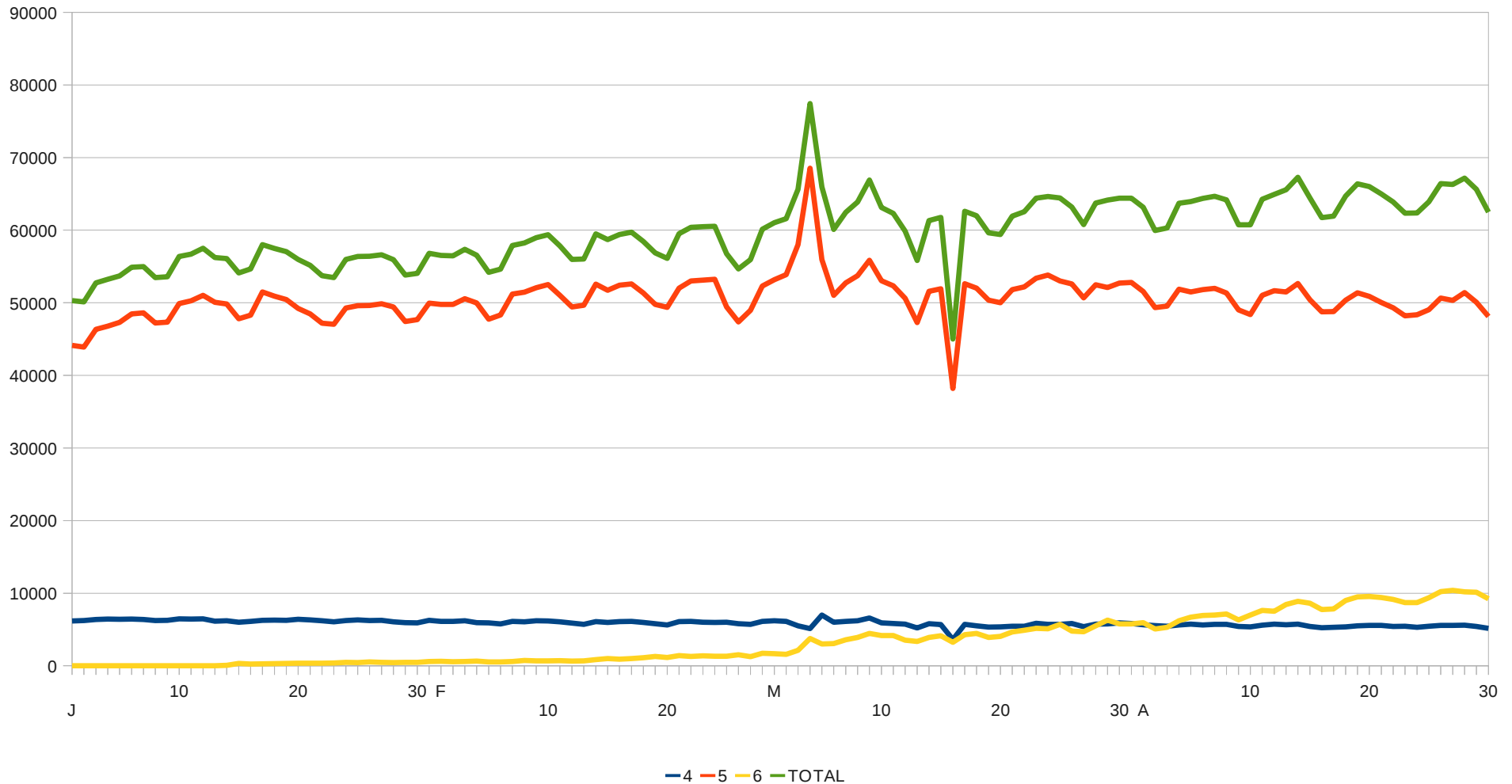


# Scientific Linux

## The Past Six Months



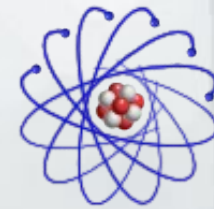
Jan-Mar 2011 - Daily Total Downloads - By Major Release



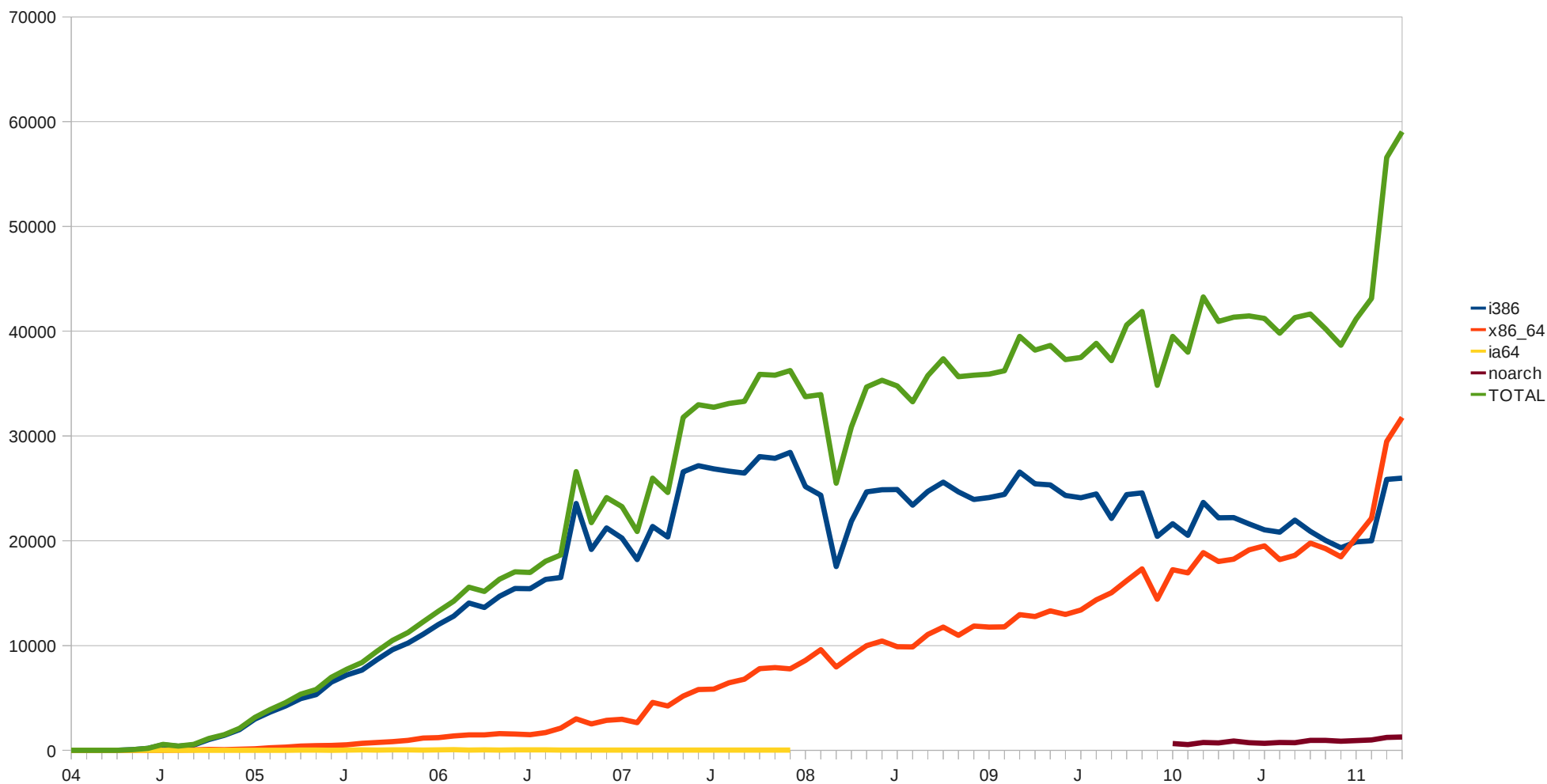


# Scientific Linux

## The Past Six Months



2004 to Present - By Arch



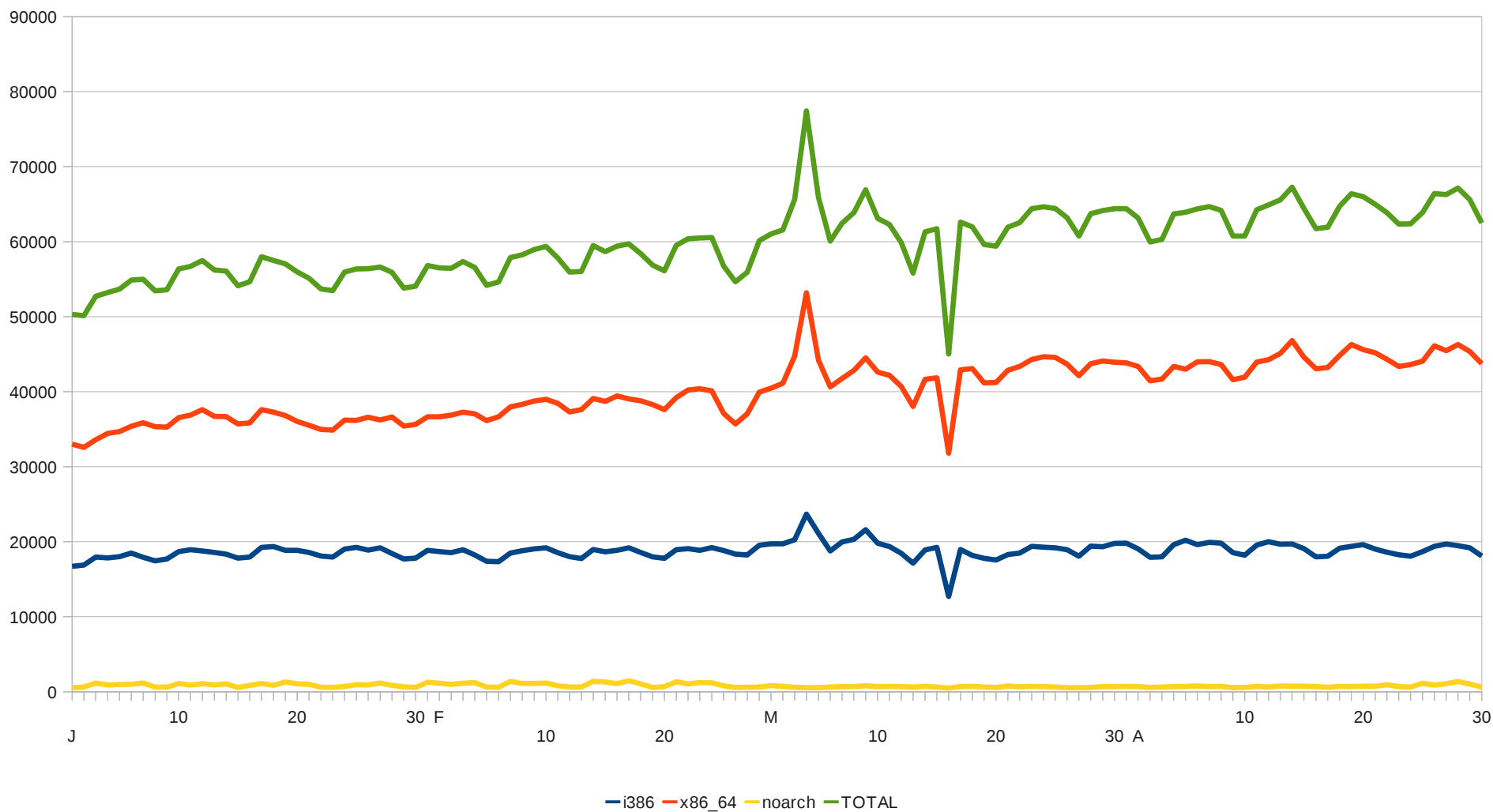


# Scientific Linux

## The Past Six Months



Jan-Mar 2011 - Daily Total Downloads - By Arch







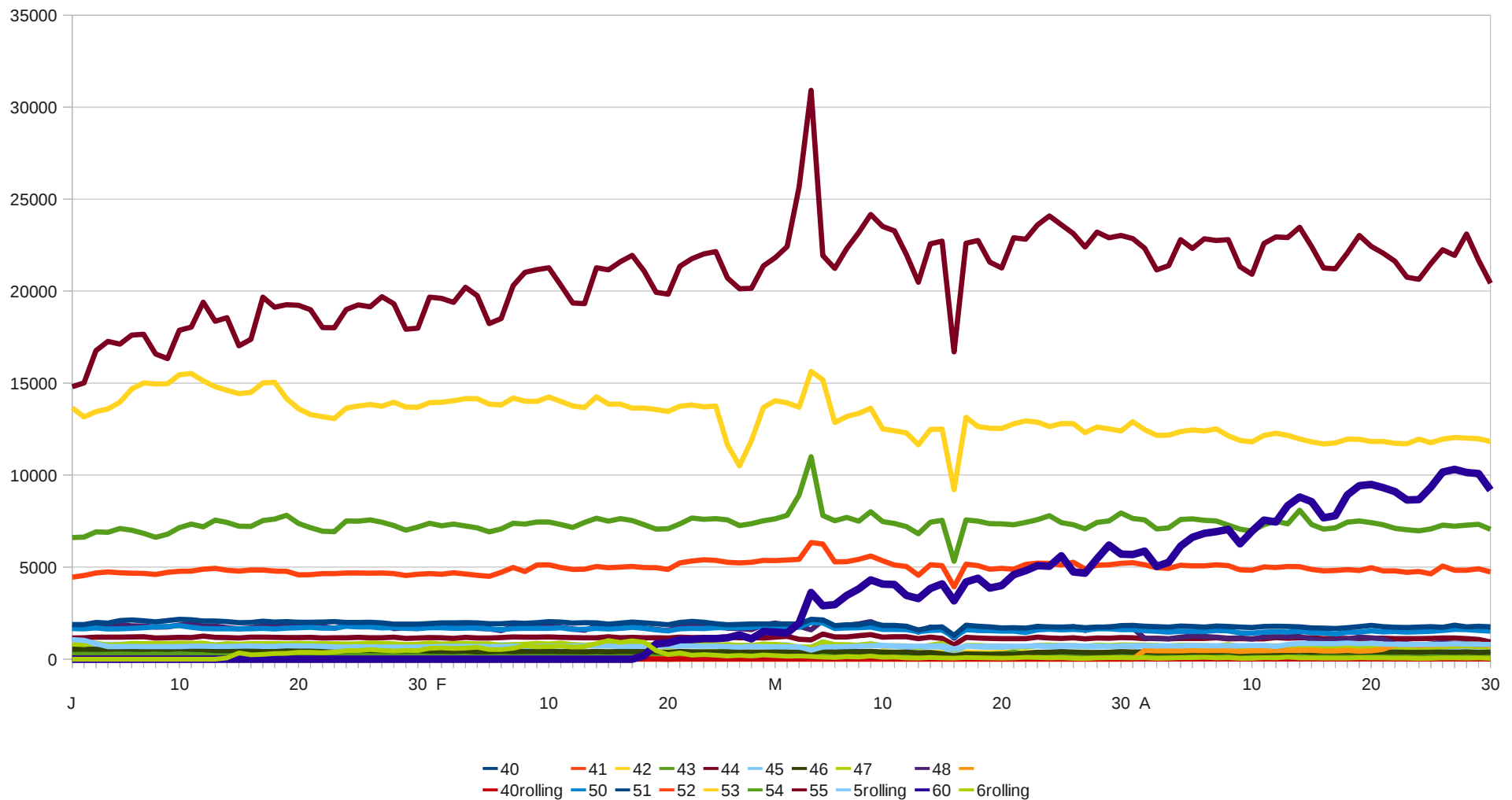


# Scientific Linux

## The Past Six Months



Jan-Mar 2011 - Daily Total Downloads - By Individual Release





# Scientific Linux

## The Past Six Months



- The following charts are based on the number of files, and/or the number of megabytes downloaded from <http://ftp.scientificlinux.org>
- Networks in the US are not counted
- Networks that might be in several countries, such as .org or .net have been taken out.
- This isn't to prove anything, these charts are made just for fun.

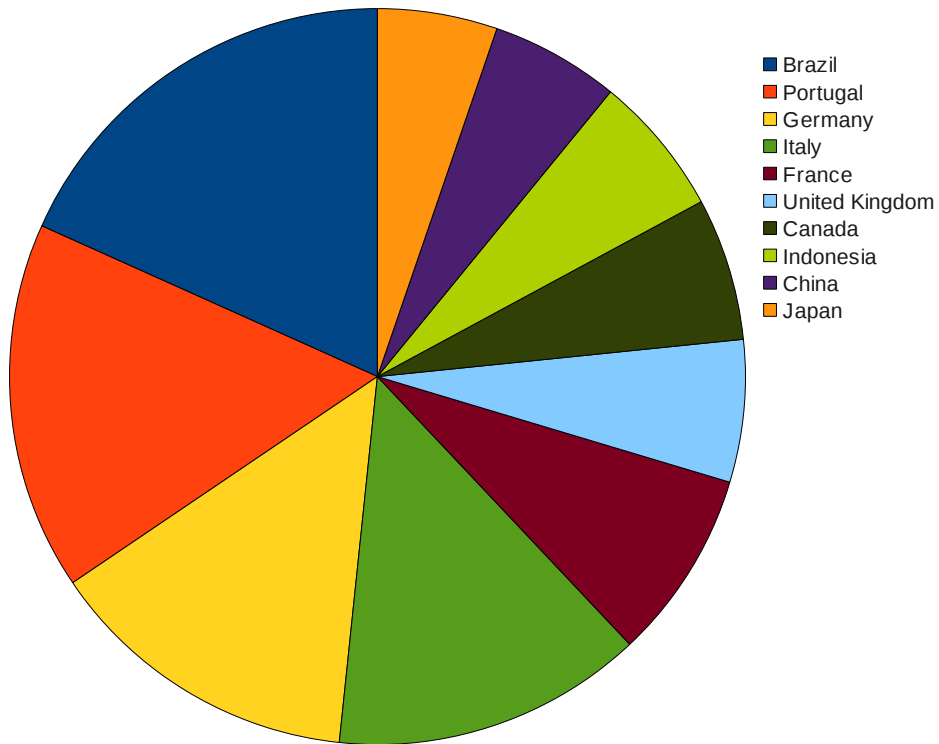


# Scientific Linux

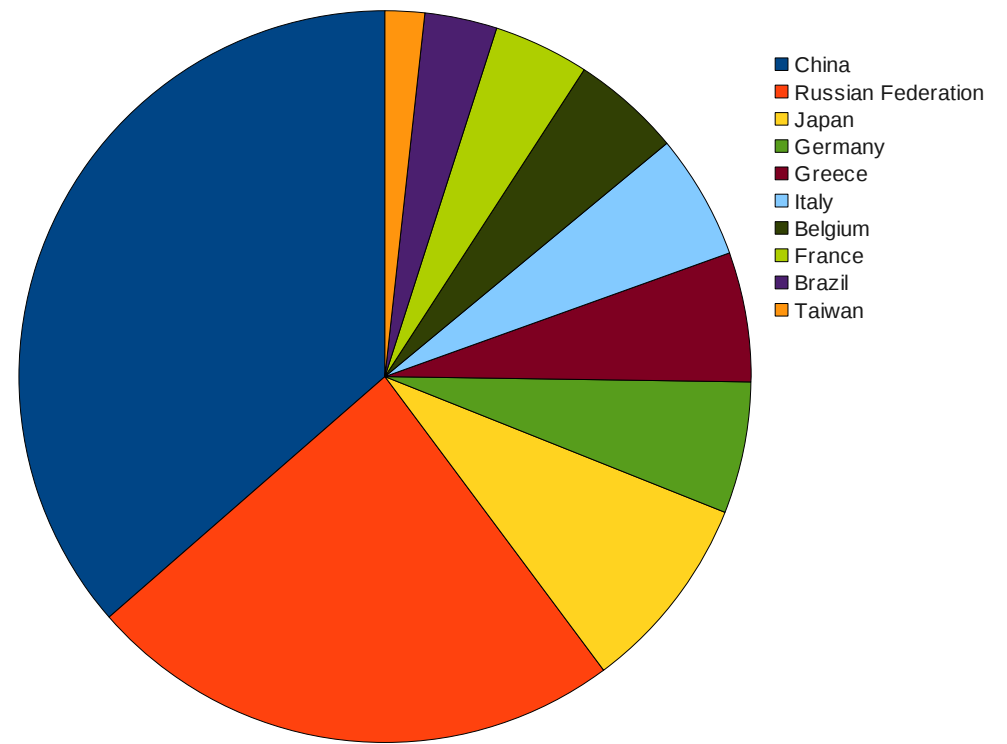
## The Past Six Months



Top Downloads of Files  
March 2011



Top Downloads by Megabytes  
March 2011





# Scientific Linux

## The Past Six Months



- S.L. 6.0 released – March 2011
  - For i386 and x86\_64
  - Programs that we added when compared to RHEL6
    - Openafs, icewm, yum-autoupdate
    - Revisor, livecd-tools, liveusb-creator
    - Repositories: adobe, atrpms, elrepo, epel, rpmforge
  - Revisor makes it trivial to make your own Site or Spin
  - Record Downloads in March
    - 1,310,941 - SL-60-i386-2011-03-03-Install-DVD.iso
    - 1,086,726 – SL-60-x86\_64-2011-03-03-Install-DVD.iso
  - Near Record Downloads in April
    - 908,567 – SL-60-i386-2011-03-03-Install-DVD.iso
    - 952,983 – SL-60-x86\_64-2011-03-03-Install-DVD.iso



# Scientific Linux

## The Past Six Months



- S.L. Live 6.0 released – March 2011
  - Web site is at [www.livecd.ethz.ch](http://www.livecd.ethz.ch)
  - For i386 and x86\_64
  - CD, DVD, mini-CD
  - Uses anaconda to install to a hard drive
  - Liveusb-creator makes it trivial to create a LiveUSB from the CD/DVD images.
  - LiveCD-tools makes it easier for people to create their own LiveCD



# Scientific Linux

## The Past Six Months



- S.L. 4.9 released – April 2011
  - For i386 and x86\_64
  - This was just an update release
    - There were no new features
    - There were no new packages
  - This is our final SL 4 release



# Scientific Linux

## The Past Six Months



- Security updates continually released for all supported versions
- Fastbugs updates consistently released weekly for latest versions of SL4, SL5 and SL6.
- Two new people were added to The Scientific Linux Development Team
  - Jason Harrington
  - Tyler Parsons





# Scientific Linux



## What we are currently working on

- Scientific Linux 5.6
  - Currently still in Beta status
    - We were waiting for RedHat to fix a buggy glibc
    - Now we are having some installer problems.
  - Expect it to be released in May 2011
- Training new SL developers
  - Writing documentation on various procedures.
  - Documentation and Training of Errata is almost done



# Scientific Linux



## What we are currently working on

- Scientific Linux Usage Survey
  - Several of you received an email requesting information about Scientific Linux Usage.
  - We decided to change this to a web survey
  - <https://www.surveymonkey.com/s/SLSurvey>
    - With this survey we hope to better understand the current usage of Scientific Linux, and find ways to improve it.
    - All of the questions are optional, but it will be helpful if you can be as complete as possible.
    - If you are willing, please leave contact information so we may follow up with you if we have further questions about your responses.



# Scientific Linux



## What we are currently working on

- Automation of rpm checking and errata email
  - We made some good progress in both automatic rpm checking and automatic errata email creation.
  - We had setbacks due to a RedHat license change.
  - We are currently re-evaluating our process for both rpm checking, and errata email creation.
- SL added packages – automatic checking for security updates.
  - We are currently looking into different ways of searching the CVE database.



# Scientific Linux

## What we see in the future



- Continue to have security updates for all releases of SL 4, until February 2012.
- Continue to have fastbug updates for only SL 4.9 until February 2012.
- Continue to have security updates for all releases of SL 5 and 6.
- Continue to have fastbug updates for only the latest releases of SL 5 and 6.



# Scientific Linux

## What we see in the future



- Decommissioning SL 4 February 2012
- Releasing SL 5.6 in May
- Releasing SL 5.7
  - Estimate – Winter 2011
- Releasing SL 6.1
  - Estimate – Fall 2011



# Scientific Linux

## Discussion / Questions



- Discussion
  - The recent buggy glibc security update leads to a question:
    - Do we want to have some type of testing, with a delayed push out, of security errata?
    - Example: Put all security errata into testing for one week before pushing them out.
- Other Questions?



# Scientific Linux

## References



- <http://www.scientificlinux.org/>
- <http://www.scientificlinux.org/distributions/6x/60/>
- <http://www.scientificlinux.org/download/mirrors>
- <https://www.surveymonkey.com/s/SLSurvey>
- <http://www.livecd.ethz.ch/>
- <https://www.redhat.com/licenses/>
- [https://www.redhat.com/licenses/rhel\\_us\\_appendix1.pdf](https://www.redhat.com/licenses/rhel_us_appendix1.pdf)