

Managing CERN Data Centres with OpenDCIM

Jarek Polok <jaroslaw.polok@cern.ch>

CERN IT-FA-HCT

HEPiX Autumn 2022



DCIM

CERN Data Centre is ...



Large number of hardware devices:

- ~ 12000 servers
- ~ 4000 storage arrays
- ~ 1300 network devices

Installed in:

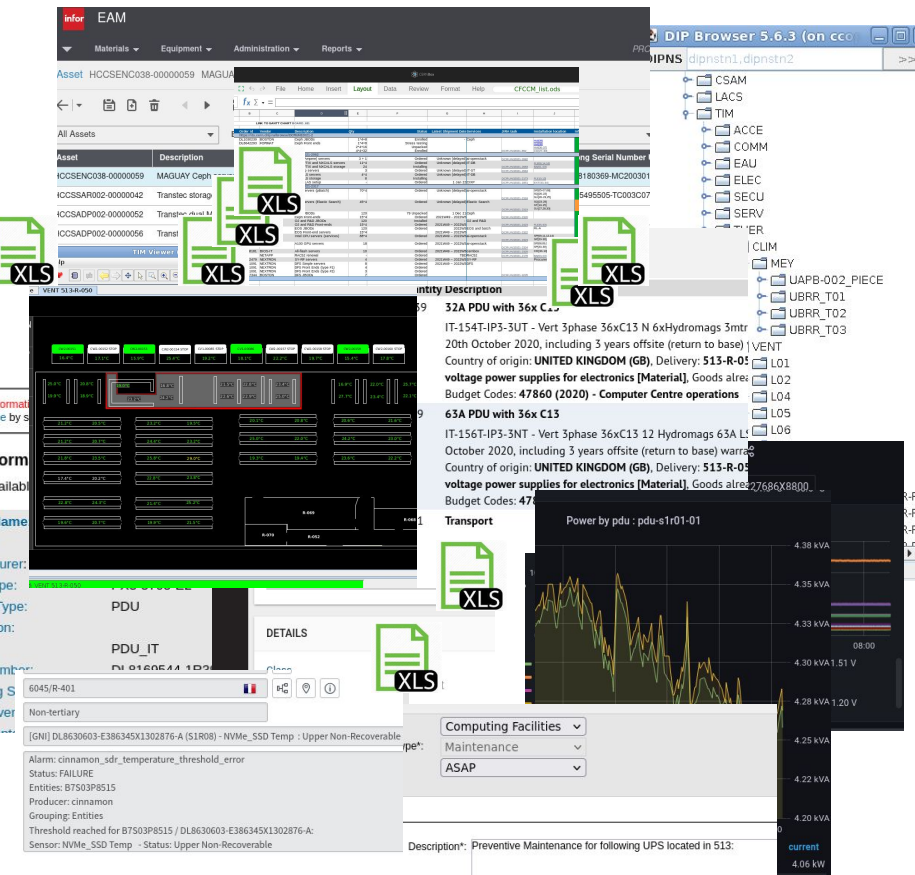
- ~ 1200 racks
- 12 rooms
- 4 locations

Interconnected with:

- ~ 30000 power connections
- ~ 35000 network connections

(and a new centre is coming in 2023)

Run by CERN/IT Fabric group



... using services & tools provided by different CERN departments (IT/EN/BE):

- **Monitoring:** Monit,Cinnamon,Spectrum, DIP,TIM,Podium, ... (*)
- **Asset Management & Lifecycle:** HxGN Infor EAM, EDH, ... (*)
- **Operation:** Snow,Impact, ... (*)

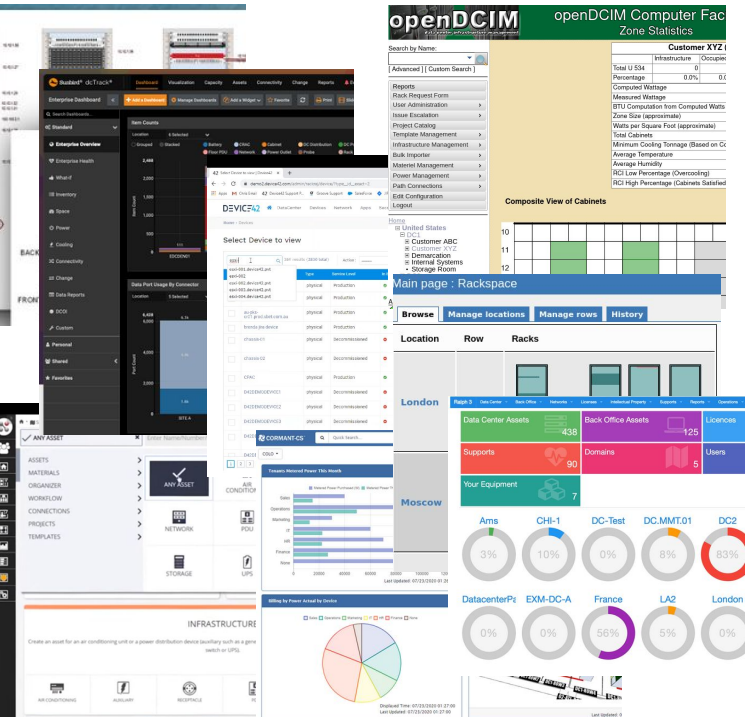
(*) - plus various tools interfacing above

... and: lots of spreadsheets ...

All (most...) of the required information is available - but not really integrated and presented in different ways ... this does not make daily operations or planning easy ...

DCIM Data Centre Infrastructure Management

... is the integration of information technology and facility management disciplines to centralize monitoring, management and intelligent of a data center's critical systems. Achieved through the implementation of specialized software, hardware and sensors, DCIM enables common, real-time monitoring and management platform for all interdependent systems across IT and facility infrastructures [wikipedia].



Commercial products: Sunbird, Nlyte, Device42, Cormant-CS, FNT ...

- we have tested/reviewed most of the above.
- most are 'all-inclusive' solutions - asset mgmt, service desk, monitoring, rack mgmt, stock mgmt, visualizations, ...
- not easily customizable, difficult to integrate in our environment.
- prohibitive pricing: mid-to-upper 6 digit prices ... per year (!)

Open Source products: RackTables, OpenDCIM, Ralph

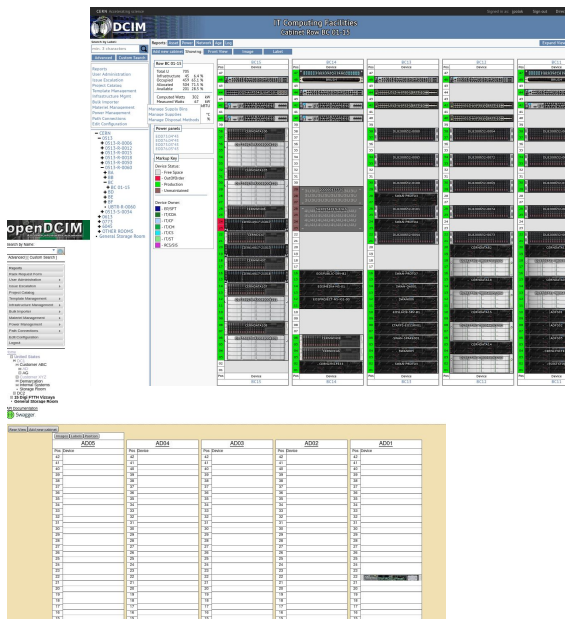
- not much choice and lacking features.
- but... can adapt these to our needs!

After testing proof-of-concept setups OpenDCIM is the choice: basic set of required features is present and integration using the API is possible.



Upstream version development is very slow ... and contributing not very easy or time efficient (it took more than 6 months to have few minor merge requests accepted).

Upstream development priorities are very different than ours (providing an 'all-inclusive' DCIM product vs. providing CERN environment integrated product without duplicating existing products in use).



... the version we use is a fork of upstream development.

Added functionality:

- asset/power/network/ageing reports
- asset ownership / status visualization
- per phase/outlet PDU power visualization.
- power distribution visualization.
- temperature/humidity room & rack visualization.
- extended API for above.

Updated supporting jquery and jquery plugins

Changed user interface to function correctly in all browsers

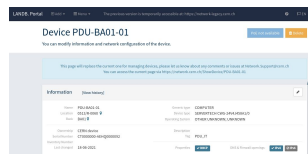
Speedup of (most of) database queries



DCIM

OpenDCIM: Integration

Network information




EAM

Asset data



hw-inventory

Hardware data
Project ID: 134454

Power distribution



collectd-DIP

Project ID: 85058

94 Commits 5 Branches 3 Tags 3.4 MB Files
Python adaptation of the IT-monitoring team DIP sensor.

PDU data podium

Project ID: 73378

520 Commits 8 Branches 43 Tags
PODIUM: POWER Distribution Unit Monitoring

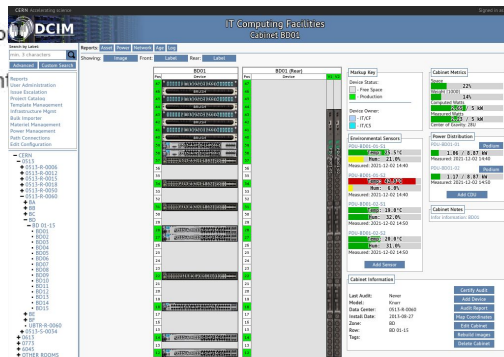


(processing & import)

opendcim

Project ID: 82172

522 Commits
Data Center



operations



Service Now alarms




puppet

hostgroup/env



```
[jpolok@opendcim] opendcimcmd GET "/device?DeviceID=70521"
{
  "error": false,
  "errorcode": 200,
  "device": [
    {
      "DeviceID": 70521,
      "Label": "TPSRV661",
      "SerialNo": "DL5655147-223312",
      "AssetTag": "HCCSENC002-00000339",
      "PrimaryIP": "tprsv661.cern.ch",
      "SNMF": [
        {
          "v3Se": {
            "error": false,
            "errorcode": 200,
            "cabinet": [
              {
                "CabinetID": "97135",
                "DataCenterID": "19",
                "Location": "T901",
                "LocationSortable": "T901",
                "AssignedTo": "1",
                "ZoneID": "88",
                "CabRowID": "229",
                "CabinetHeight": "42",
                "Model": "Atos",
                "KeyLock": "",
                "MaxKW": "4",
                "MaxWeight": "1000",
                "InstallationDate": "1970-01-01",
                "MapX1": "251",
                "MapY1": "130",
                "MapX2": "274",
                "MapY2": "166",
                "FrontEdge": "Bottom",
                "Notes": "depth=90,width=60,cooling=air",
                "Temp": "15.9",
                "U1Position": "Bottom",
                "Rights": "Read",
                "DataCenterName": "0613-R-0001"
              }
            ]
          }
        ]
      ]
    }
  ]
}
```

Integration with other systems is implemented using API:

- REST
- creation/updates/deletion of assets
- (re)setting asset attributes
- definition of network/power connections

Used for all the data available in the system except:

- definition of floor plans
- definition of racks (investigating automation...)
- definition of new hardware models (and adding images for these)

The API is mostly complete except:

- endpoints for updating PDU/sensor readouts
- bulk update functionality missing...

(for the above direct write to DB is used)



IT Computing Facilities Device ITHDP-NXCALS-ONLINE5002

Asset Tracking	
Device ID	112543
Status	Production
Label	ITHDP-NXCALS-ONLINE5002
Serial Number	DL8738187-E386345X1B03769-A
Asset Tag	HCCSSYS020-00001833
Primary IP / Host Name	ithdp-nxcals-online5002.cern.ch
Manufacture Date	2022-02-28
Install Date	2022-01-19
Warranty Company	CDC-3YEARS
Warranty Expiration	2025-02-28
Ticket	
Last Audit Completed	2022-07-24 00:01
Departmental Owner	IT/DA Show Contacts
Primary Contact	(ai-hadoop-admin) ai-hadoop-admin, e
Tags	Awaiting input...

Physical Infrastructure	
Cabinet	0513-R-0060 / BA01
Parent Device	DL8738187-E386345X1B03769 Map
Device Class	SUPM - MBD-H12DST-B Show
Number of slots	1
Position	1
Vertical position	0
Back Side	<input checked="" type="checkbox"/>
Number of Data Ports	0
Nominal Draw (Watts)	0
Weight	0
Power Connections	0
Device Type	Server

Attached Assets	
Parent	Type
DL8738187-E386345X1B03769	Chassis

Escalation Information	
Time Period	Select...
Details	Select...

Custom Attributes	
Class	CSSYS
DeliveryID	9074167
DepReqID	DR-8219681/IT

External Information	
Infor	EDH
lanDB	Foreman
Gitlab	Monit
Cinnamon	SNOW GNIs:
	INC3280792

Device Images	
	Front
N/A	Rear

NO

Only CERN-specific part can be found in asset information display:

the 'external information' panel linking to other CERN services/data-sources.

we plan on making this configurable in future releases - allowing to define custom URLs.



0874-R-0012 Showing: Overview Power/Temp/Hum

0874-R-0012

IT Computing Facilities Reports

- Contact Reports**
 - Department/Contact Report
- Asset Reports**
 - Asset Data Report
 - CDU Connections Report
 - Network Connections Report
 - Asset Aging Report

Reports below this line have not been rewritten yet and may not work as expected.

 - Export Data Center for CFD (XML)
 - Asset Report by Owner
 - Data Center Asset Costing Report
 - Project Asset Report
 - Warranty Expiration Report
 - Virtual Machines by Department
 - Network Map
 - Vendor/Model Report
- Operational Reports**
 - PDU Exceptions Report
 - Simulated Power Outage Report

Reports below this line have not been rewritten yet and may not work as expected.

 - Data Exceptions Report
 - Diverse Power Exceptions Report
 - Project Power Outage Report
 - Power Distribution by Data Center
 - Server Tier Classification Report
 - Power Panel Schedule Report
- Auditing Reports**
 - Actions Log
 - Cabinet Audit

IT Computing Facilities Project Detail

Path of DL7336965-RJ0088004012 - Port 1

Cabinet: CB07 U:15 DL7336965-RJ0088004012 Port: S01

Cabinet: CB07 U:19 THDP:2 Port: S02

Legend: Front Connection (yellow arrow), Rear Connection (black arrow)

Project: q

Project Name: qa

Project Sponsor: jarek

Project Start Date: 2022-04-10

Project Expiration Date: 2022-10-23

Project Actual End Date: 2024-10-27

Project to Administer: q

Choose a Data Center

Items selected	Remove all	Add all

- Integration of BE department Controls group equipment
- Improved visualisation/positioning of PDUs
- Additional reports / rewrite
- Integration of non-Fabric group procured hardware
- Bulk device edit
- Device move in rack view (disabled at present since buggy)
- Visual device position errors reporting
- Bi-directional updates between HxGN EAM and OpenDCIM
- Multi-point network paths
- Bulk update API
- “Projects” implementation to allow for better planning
- ...

... some of the above will be rather distant future ...



<https://opendcim.cern.ch>

Access:

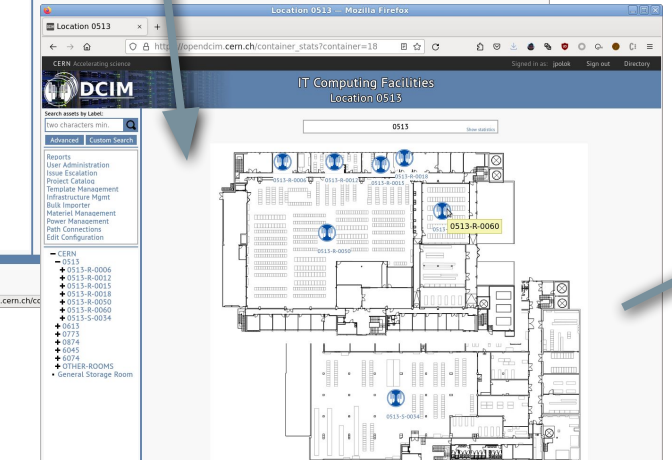
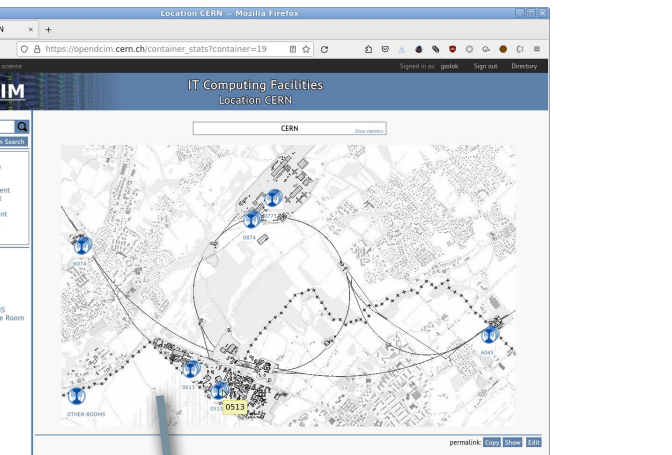
- All CERN accounts (primary/secondary & service)
- CERN internal network restricted



Next slides are screenshots of live demo



Floor view

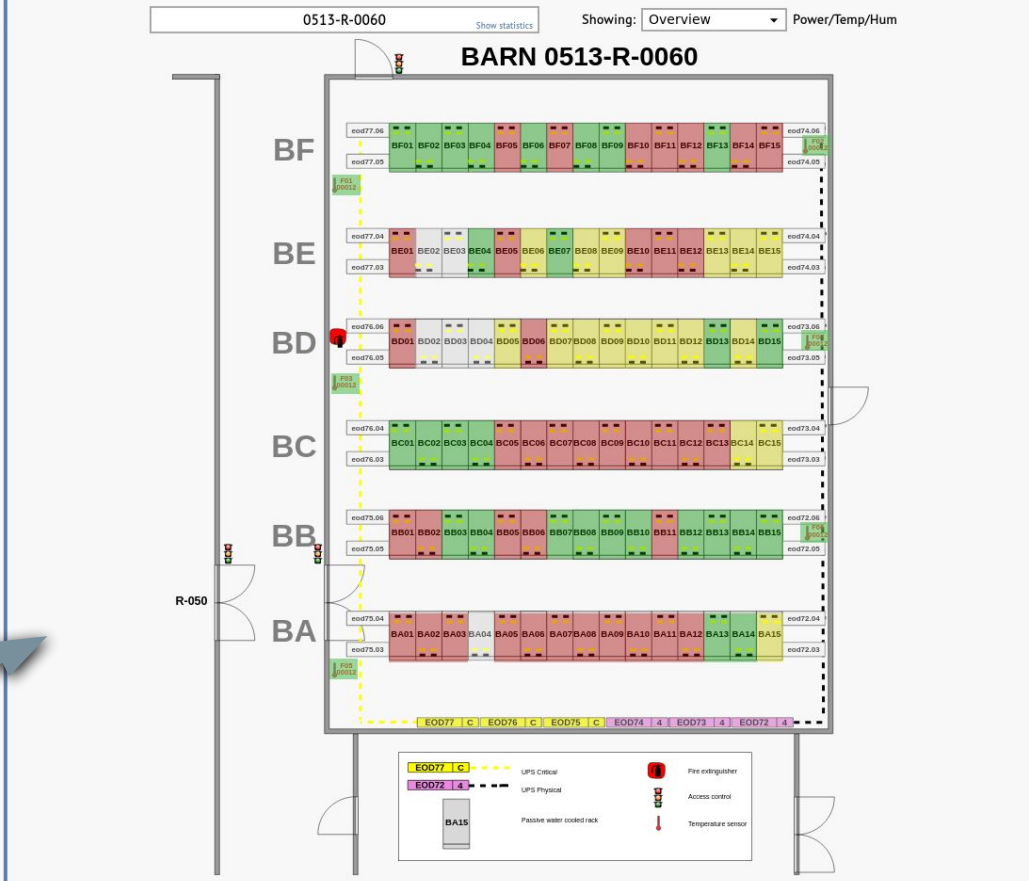


Search assets by Label:
two characters min.

- Reports
- User Administration
 - Issue Escalation
 - Project Catalog
 - Template Management
 - Infrastructure Mgmt
 - Bulk Importer
 - Material Management
 - Power Management
 - Path Connections
 - Edit Configuration

- CERN
 - 0513
 - + 0513-R-0006
 - + 0513-R-0012
 - + 0513-R-0015
 - + 0513-R-0018
 - + 0513-R-0050
 - + 0513-R-0060
 - BA
 - BA 01-15
 - BA01
 - BA02
 - BA03
 - BA04
 - BA05
 - BA06
 - BA07
 - BA08
 - BA09
 - BA10
 - BA11
 - BA12
 - BA13
 - BA14
 - BA15
 - + BB
 - + BC
 - + BD
 - + BE
 - + BF
 - UB-R-0060
 - + 0513-S-0034
- + 0613
- + 0773
- + 0874
- + 6045
- + 6074
- + OTHER-ROOMS
 - General Storage Room

Reports: Asset Power Network Age Log Expand Map >>





Floor view



Search assets by Label:

two characters min.

Advanced Custom Search

- Reports
- User Administration
 - Issue Escalation
 - Project Catalog
 - Template Management
 - Infrastructure Mgmt
 - Bulk Importer
 - Material Management
 - Power Management
 - Path Connections
 - Edit Configuration

- CERN
 - 0513
 - + 0513-R-0006
 - + 0513-R-0012
 - + 0513-R-0015
 - + 0513-R-0018
 - + 0513-R-0050
 - 0513-R-0060
 - BA
 - BA 01-15
 - BA01
 - BA02
 - BA03
 - BA04
 - BA05
 - BA06
 - BA07
 - BA08
 - BA09
 - BA10
 - BA11
 - BA12
 - BA13
 - BA14
 - BA15
 - + BB
 - + BC
 - + BD
 - + BE
 - + BF
 - UBTR-R-0060
 - + 0513-S-0034
 - + 0613
 - + 0773
 - + 0874
 - + 6045
 - + 6074
 - OTHER ROOMS
 - General Storage Room

Reports: Asset Power Network Age Log

Expand Map >>

0513-R-0060				
	Infrastructure	Occupied	Allocated	Available
Total U	4231	448	1,879	2,327
Percentage	10.6 %	44.4 %	55.0 %	45.0 %
Delivery Address	CYDC004			
Administrator	IT			
Computed Wattage	1,180 kW			
Measured Wattage	263 kW			
Design Maximum	450 kW			
Data Center Size	228 m ²			
Watts per Square Meter	5,174 W			
Total Cabinets	91			
Average Temperature	26 °C			
Average Humidity	40 %			

Showing: Overview

Power/Temp/Hum

- Overview
- Space
- Weight
- Calculated Power
- Measured Power
- Temperature
- Humidity
- Air Flow

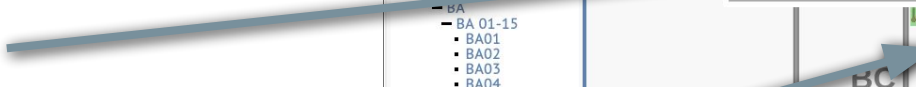
EOD7.04*43

- Panel Voltage 400 V
- Main Breaker 100 A
- Parent Panel EOD7.4*43
- Measured Power 10.30 kW
- Inherited Power 9.54 kW
- L1 2.76 kW
- L2 3.60 kW
- L3 3.19 kW
- Estimated Power 1.30 kW
- Measured 2022-10-17 10:50

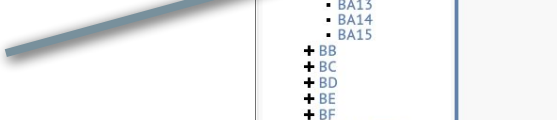
Detailed reports



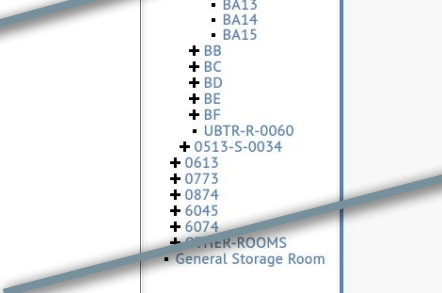
Power distribution



Environmental sensor



Rack information





Power report



IT Computing Facilities
Data Center 0513-R-0060

Search assets by Label:

two characters min.

Reports: Asset Power Network Age Log

Expand Map >>

Advanced Custom Search

0513-R-0060

Show statistics

Showing: Overview

Power/Temp/Hum

Mozilla Firefox

Data Center 0513-R- Search Results I73368600596902 :: opendcim.cern.ch/re

https://opendcim.cern.ch/report_cdu_conn?row=146

90%

CERN Accelerating science

Signed in as: jpolok Sign out Directory



IT Computing Facilities PDU Power Connections View/Export

Search assets by Label:

two characters min.

Advanced Custom Search

Select one of view criteria

Data Center: All Zone: All Row: CF 01-11 Cabinet: All

Show: unconnected devices X

View

Search: all columns

Copy Excel CSV Columns Print

Data Center	Zone	Row	Cabinet	PDU Label	PDU Port Number	PDU Port Label	PDU Port Wattage	Device Label	Device Serial Number	Device Asset Tag	Device Position
0513-R-0050	CF	CF 01-11	CF01	PDU-CF01-01	1	L1/01	111	U513-C-MG206-SHPBL-CF01	SG40FLY2R3	U513-C-MG206-SHPBL-CF01	48
0513-R-0050	CF	CF 01-11	CF01	PDU-CF01-01	2	L1/02	116	DL6636929-HRZ170800169	DL6636929-HRZ170800169	HCCSSAR008-00000119	5
0513-R-0050	CF	CF 01-11	CF01	PDU-CF01-01	3	L1/03	0	DL6636929-HRZ170800126	DL6636929-HRZ170800126	HCCSSAR008-00000086	9
0513-R-0050	CF	CF 01-11	CF01	PDU-CF01-01	4	L1/04	0	DL6636929-HRZ170800244	DL6636929-HRZ170800244	HCCSSAR008-00000171	13
0513-R-0050	CF	CF 01-11	CF01	PDU-CF01-01	5	L1/05	113	DL6636929-HRZ170800224	DL6636929-HRZ170800224	HCCSSAR008-00000156	27
0513-R-0050	CF	CF 01-11	CF01	PDU-CF01-01	6	L1/06	565	DL6636929-HRZ170800248	DL6636929-HRZ170800248	HCCSSAR008-00000174	31
0513-R-0050	CF	CF 01-11	CF01	PDU-CF01-01	7	L1/07	246	DL6636494-210230115010H3000316	DL6636494-210230115010H3000316	HCCSENC026-00000117	40
0513-R-0050	CF	CF 01-11	CF01	PDU-CF01-01	8	L1/08	114	DL6636710-4M0317N238	DL6636710-4M0317N238	HCCSENC023-00000661	21
0513-R-0050	CF	CF 01-11	CF01	PDU-CF01-01	9	L2/01	110	DL6636929-HRZ170800069	DL6636929-HRZ170800069	HCCSSAR008-00000044	35
0513-R-0050	CF	CF 01-11	CF01	PDU-CF01-01	10	L2/02	109	DL6636929-HRZ170800169	DL6636929-HRZ170800169	HCCSSAR008-00000119	5
0513-R-0050	CF	CF 01-11	CF01	PDU-CF01-01	11	L2/03	219	DL6636929-HRZ170800126	DL6636929-HRZ170800126	HCCSSAR008-00000086	9
0513-R-0050	CF	CF 01-11	CF01	PDU-CF01-01	12	L2/04	111	DL6636929-HRZ170800244	DL6636929-HRZ170800244	HCCSSAR008-00000171	13
0513-R-0050	CF	CF 01-11	CF01	PDU-CF01-01	13	L2/05	0	DL6636929-HRZ170800110	DL6636929-HRZ170800110	HCCSSAR008-00000074	17
0513-R-0050	CF	CF 01-11	CF01	PDU-CF01-01	14	L2/06	650	DL6636929-HRZ170800048	DL6636929-HRZ170800048	HCCSSAR008-00000031	23
0513-R-0050	CF	CF 01-11	CF01	PDU-CF01-01	15	L2/07	593	DL6636494-210230115010H3000335	DL6636494-210230115010H3000335	HCCSENC026-00000136	43
0513-R-0050	CF	CF 01-11	CF01	PDU-CF01-01	16	L2/08	0	DL6636494-210230115010H3000316	DL6636494-210230115010H3000316	HCCSENC026-00000117	40
0513-R-0050	CF	CF 01-11	CF01	PDU-CF01-01	17	L3/01	171	DL6636929-HRZ170800110	DL6636929-HRZ170800110	HCCSSAR008-00000074	17
0513-R-0050	CF	CF 01-11	CF01	PDU-CF01-01	18	L3/02	210	DL6636929-HRZ170800048	DL6636929-HRZ170800048	HCCSSAR008-00000031	23
0513-R-0050	CF	CF 01-11	CF01	PDU-CF01-01	19	L3/03	209	DL6636929-HRZ170800224	DL6636929-HRZ170800224	HCCSSAR008-00000156	27
0513-R-0050	CF	CF 01-11	CF01	PDU-CF01-01	20	L3/04	108	DL6636929-HRZ170800248	DL6636929-HRZ170800248	HCCSSAR008-00000174	31
0513-R-0050	CF	CF 01-11	CF01	PDU-CF01-01	21	L3/05	111	DL6636929-HRZ170800069	DL6636929-HRZ170800069	HCCSSAR008-00000044	35
0513-R-0050	CF	CF 01-11	CF01	PDU-CF01-01	22	L3/06	252	DL6636710-4M0317N238	DL6636710-4M0317N238	HCCSENC023-00000661	21
0513-R-0050	CF	CF 01-11	CF01	PDU-CF01-01	23	L3/07	562	DL6636494-210230115010H3000335	DL6636494-210230115010H3000335	HCCSENC026-00000136	43
0513-R-0050	CF	CF 01-11	CF01	PDU-CF01-01	24	L3/08	36				
0513-R-0050	CF	CF 01-11	CF02	PDU-CF02-01	1	L1/01	106	F513-C-IP600-LBR7T-10	CRJ3328M001	F513-C-IP600-LBR7T-10	46
0513-R-0050	CF	CF 01-11	CF02	PDU-CF02-01	2	L1/02	112	F513-C-IP600-LBR7T-10	CRJ3328M001	F513-C-IP600-LBR7T-10	46
0513-R-0050	CF	CF 01-11	CF02	PDU-CF02-01	1	L1/01	106	DL6636929-HRZ170800062	DL6636929-HRZ170800062	HCCSSAR008-00000038	5
0513-R-0050	CF	CF 01-11	CF02	PDU-CF02-01	2	L1/02	112	DL6636929-HRZ170800108	DL6636929-HRZ170800108	HCCSSAR008-00000073	9

- Reports
- User Administration
- Issue Escalation
- Project Catalog
- Template Management
- Infrastructure Mgmt
- Bulk Importer
- Material Management
- Power Management
- Path Connections
- Edit Configuration

- CERN
- 0513
- + 0513-R-0006
- + 0513-R-0012
- + 0513-R-0015
- + 0513-R-0018
- 0513-R-0050
- + CB
- + CC
- + CD
- + CE
- CF
- + CF 01-11
- + CF 12-22
- + CH
- + CI
- + CJ
- + CK
- + CL
- + CM
- + CN
- + CP
- + CQ

Mozilla Firefox

Data Center 0513-R- x Search Results x I73368600596902 :: x opendcim.cern.ch/re x +

https://opendcim.cern.ch/report_network_conn?dc=17 90%

CERN Accelerating science

Search assets by Label: Advanced Custom Search

Reports
User Administration
Issue Escalation
Project Catalog
Template Management
Infrastructure Mgmt
Bulk Importer
Materiel Management
Power Management
Path Connections
Edit Configuration

- CERN
- 0513
- + 0513-R-0006
- + 0513-R-0012
- + 0513-R-0015
- + 0513-R-0018
- + 0513-R-0050
- + 0513-R-0060
- + 0513-S-0034
- + 0613
- + 0773
- + 0874
- + 6045
- + 6074
- + OTHER-ROOMS
- General Storage Room

IT Computing Facilities Network Connections View/Export

Select one of view criteria

Data Center: 0513-R-0060 Zone: All Row: All Cabinet: All

Search: all columns

Cabinet	Switch Label	Switch Serial No	Switch Port Number	Switch Port Label	Device Cabinet	Device Label	Device Port Number	Device Port Label	
BA01	U513-A-MG101-SHP2M-1	SG233IP00C	0	U0	BE01	U513-A-MG101-SHP2M-16	1	N01	u513-a-mg101-shp
BA01	U513-A-MG101-SHP2M-1	SG233IP00C	1	N01	BA01	ITHDP-NXCALS-ONLINE5004	1	N01	ithdp-nxcals-online
BA01	U513-A-MG101-SHP2M-1	SG233IP00C	2	N02	BA01	ITHDP-NXCALS-ONLINE5006	1	N01	ithdp-nxcals-online
BA01	U513-A-MG101-SHP2M-1	SG233IP00C	3	N03	BA01	ITHDP-NXCALS-ONLINE5008	1	N01	ithdp-nxcals-online
BA01	U513-A-MG101-SHP2M-1	SG233IP00C	4	N04	BA01	ITHDP-NXCALS-ONLINE5003	1	N01	ithdp-nxcals-online
BA01	U513-A-MG101-SHP2M-1	SG233IP00C	5	N05	BA01	ITHDP-NXCALS-ONLINE5002	1	N01	ithdp-nxcals-online
BA01	U513-A-MG101-SHP2M-1	SG233IP00C	6	N06	BA01	ITHDP-NXCALS-ONLINE5005	1	N01	ithdp-nxcals-online
BA01	U513-A-MG101-SHP2M-1	SG233IP00C	7	N07	BA01	ITHDP-NXCALS-ONLINE5007	1	N01	ithdp-nxcals-online
BA01	U513-A-MG101-SHP2M-1	SG233IP00C	8	N08	BA01	ITHDP-NXCALS-ONLINE5001	1	N01	ithdp-nxcals-online
BA01	U513-A-MG101-SHP2M-1	SG233IP00C	9	N09	BA01	ITHDP-NXCALS4013	1	N01	ithdp-nxcals4013-i
BA01	U513-A-MG101-SHP2M-1	SG233IP00C	10	N10	BA01	ITHDP-NXCALS4012	1	N01	ithdp-nxcals4012-i
BA01	U513-A-MG101-SHP2M-1	SG233IP00C	11	N11	BA01	ITHDP-NXCALS4011	1	N01	ithdp-nxcals4011-i
BA01	U513-A-MG101-SHP2M-1	SG233IP00C	12	N12	BA01	ITHDP-NXCALS4014	1	N01	ithdp-nxcals4014-i
BA01	N513-A-IP160-LUCY-10	XH3719250090	1	N01 [0/0/1]	BA01	ITHDP-NXCALS4012	2	N02	ithdp-nxcals4012
BA01	N513-A-IP160-LUCY-10	XH3719250090	2	N02 [0/0/2]	BA01	ITHDP-NXCALS4014	2	N02	ithdp-nxcals4014
BA01	N513-A-IP160-LUCY-10	XH3719250090	3	N03 [0/0/3]	BA01	ITHDP-NXCALS4011	2	N02	ithdp-nxcals4011
BA01	N513-A-IP160-LUCY-10	XH3719250090	4	N04 [0/0/4]	BA01	ITHDP-NXCALS-ONLINE5001	2	N02	ithdp-nxcals-online
BA01	N513-A-IP160-LUCY-10	XH3719250090	5	N05 [0/0/5]	BA01	ITHDP-NXCALS-ONLINE5002	2	N02	ithdp-nxcals-online
BA01	N513-A-IP160-LUCY-10	XH3719250090	6	N06 [0/0/6]	BA01	ITHDP-NXCALS-ONLINE5005	2	N02	ithdp-nxcals-online
BA01	N513-A-IP160-LUCY-10	XH3719250090	7	N07 [0/0/7]	BA01	ITHDP-NXCALS-ONLINE5007	2	N02	ithdp-nxcals-online
BA01	N513-A-IP160-LUCY-10	XH3719250090	8	N08 [0/0/8]	BA01	ITHDP-NXCALS-ONLINE5008	2	N02	ithdp-nxcals-online
BA01	N513-A-IP160-LUCY-10	XH3719250090	9	N09 [0/0/9]	BA01	ITHDP-NXCALS-ONLINE5003	2	N02	ithdp-nxcals-online
BA01	N513-A-IP160-LUCY-10	XH3719250090	10	N10 [0/0/10]	BA01	ITHDP-NXCALS-ONLINE5004	2	N02	ithdp-nxcals-online
BA01	N513-A-IP160-LUCY-10	XH3719250090	11	N11 [0/0/11]	BA01	ITHDP-NXCALS-ONLINE5006	2	N02	ithdp-nxcals-online
BA02	U513-A-MG101-SHP2L-2	SG234IROKW	0	U0	BE01	U513-A-MG101-SHP2M-16	2	N02	u513-a-mg101-shp
BA02	U513-A-MG101-SHP2L-2	SG234IROKW	1	N01	BA02	ITHDP-NXCALS-ONLINE5020	1	N01	ithdp-nxcals-online
BA02	U513-A-MG101-SHP2L-2	SG234IROKW	2	N02	BA02	ITHDP-NXCALS-ONLINE5019	1	N01	ithdp-nxcals-online
BA02	U513-A-MG101-SHP2L-2	SG234IROKW	3	N03	BA02	ITHDP-NXCALS-ONLINE5015	1	N01	ithdp-nxcals-online
BA02	U513-A-MG101-SHP2L-2	SG234IROKW	4	N04	BA02	ITHDP-NXCALS-ONLINE5018	1	N01	ithdp-nxcals-online
BA02	U513-A-MG101-SHP2L-2	SG234IROKW	5	N05	BA02	ITHDP-NXCALS-ONLINE5009	1	N01	ithdp-nxcals-online
BA02	U513-A-MG101-SHP2L-2	SG234IROKW	6	N06	BA02	ITHDP-NXCALS-ONLINE5016	1	N01	ithdp-nxcals-online
BA02	U513-A-MG101-SHP2L-2	SG234IROKW	7	N07	BA02	ITHDP-NXCALS-ONLINE5013	1	N01	ithdp-nxcals-online



Age report



IT Computing Facilities
Data Center 0513-R-0060

Search assets by Label:

two characters min.

Reports: Asset Power Network Age Log

Expand Map >>

Advanced Custom Search

0513-R-0060

Show statistics

Showing: Overview

Power/Temp/Hum

Mozilla Firefox

Data Center 0513-R- Search Results I73368600596902 :: opendcim.cern.ch/re

https://opendcim.cern.ch/report_aging?dc=17

90%

Signed in as: jpolok Sign out Directory



IT Computing Facilities Device Age View/Export

Search assets by Label:

two characters min.

Advanced Custom Search

Select one of view criteria

Data Center: 0513-R-0060 Zone: All Row: All Cabinet: All

Show: child devices , device type All, device status All, device age All

View

Search: all columns

Copy Excel CSV Columns Print

Cabinet	Position	Height	Label	Primary IP	Age	Install Date	Mfg Date	Warranty Expire	Owner	Primary Contact	Status
BD15	36	4	CD5151091-TC0031004007		9 y 6 m 7 d	2021-02-03	2013-04-18	2018-04-19	IT/CF		OutOfOrder
BD15	32	4	CD5151091-TC0031004120		9 y 6 m 7 d	2021-02-03	2013-04-18	2018-04-19	IT/CF		Production
BD15	30	2	CD5151113-6N006550TS		9 y 6 m 7 d	2014-04-11	2013-04-18	2018-04-19	IT/FA		Production
BD15	30	0	AFS263		9 y 6 m 7 d	2014-04-11	2013-04-18	2018-04-19	IT/FA	procurement-rd, e-group	Production
BD15	30	0	CD5151113-6N006550TS-3		9 y 6 m 7 d	2014-04-11	2013-04-18	2018-04-19	IT/CF		OutOfOrder
BD15	30	0	AFS261		9 y 6 m 7 d	2014-04-11	2013-04-18	2018-04-19	IT/FA	procurement-rd, e-group	Production
BD15	30	0	AFS260		9 y 6 m 7 d	2014-04-11	2013-04-18	2018-04-19	IT/FA	procurement-rd, e-group	Production
BD15	26	4	CD5151091-TC0031004118		9 y 6 m 7 d	2021-02-03	2013-04-18	2018-04-19	IT/CF		Production
BD15	22	4	CD5151091-TC0031004119		9 y 6 m 7 d	2021-02-03	2013-04-18	2018-04-19	IT/CF		Production
BD15	18	4	CD5151091-TC0031004121		9 y 6 m 7 d	2021-02-03	2013-04-18	2018-04-19	IT/CF		Production
BD15	14	4	CD5151091-TC0031004117		9 y 6 m 7 d	2021-02-03	2013-04-18	2018-04-19	IT/CF		Production
BD15	12	2	CD5151113-6N006554TS		9 y 6 m 7 d	2014-04-11	2013-04-18	2018-04-19	IT/CF		Production
BD15	12	0	AFS265		9 y 6 m 7 d	2014-04-11	2013-04-18	2018-04-19	IT/FA	procurement-rd, e-group	Production
BD15	12	0	AFS266		9 y 6 m 7 d	2014-04-11	2013-04-18	2018-04-19	IT/FA	procurement-rd, e-group	Production
BD15	12	0	AFS267		9 y 6 m 7 d	2014-04-11	2013-04-18	2018-04-19	IT/FA	procurement-rd, e-group	Production
BD15	12	0	AFS264		9 y 6 m 7 d	2014-04-11	2013-04-18	2018-04-19	IT/FA	procurement-rd, e-group	Production
BD15	8	4	CD5151091-TC0031004116		9 y 6 m 7 d	2021-02-03	2013-04-18	2018-04-19	IT/CF		Production
BD15	4	4	CD5151091-TC0031004011		9 y 6 m 7 d	2021-02-03	2013-04-18	2018-04-19	IT/CF		Production
BD10	26	3	DL5320112-TB0036042027		9 y 1 m 9 d	2021-02-03	2013-09-16	2019-01-01	IT/CF		Production
BD10	24	2	CERNXCHG80		9 y 1 m 9 d	2018-11-14	2013-09-16	2019-01-01	IT/CD	support-windows-servers, e-group	Production
BD10	21	3	DL5320112-TB0036042024		9 y 1 m 9 d	2021-02-03	2013-09-16	2019-01-01	IT/CF		Production
BD11	26	3	DL5320112-TB0036042000		9 y 1 m 9 d	2021-02-03	2013-09-16	2019-01-01	IT/CF		Production
BD11	24	2	CERNWSSDB41		9 y 1 m 9 d	2018-11-14	2013-09-16	2019-01-01	IT/CD	support-windows-servers, e-group	Production
BD11	21	3	DL5320112-TB0036042001		9 y 1 m 9 d	2021-02-03	2013-09-16	2019-01-01	IT/CF		Production
BD12	36	3	DL5320112-TB0036042025		9 y 1 m 9 d	2021-02-03	2013-09-16	2019-01-01	IT/CF		Production
BD12	34	2	CERNXCHG52		9 y 1 m 9 d	2018-11-14	2013-09-16	2019-01-01	IT/CD	support-windows-servers, e-group	Production
BD12	31	3	DL5320112-TB0036042023		9 y 1 m 9 d	2021-02-03	2013-09-16	2019-01-01	IT/CF		Production
BD12	26	3	DL5320112-TB0036042019		9 y 1 m 9 d	2021-02-03	2013-09-16	2019-01-01	IT/CF		Production
BD12	24	2	CERNXCHG54		9 y 1 m 9 d	2018-11-14	2013-09-16	2019-01-01	IT/CD	support-windows-servers, e-group	Production
BD12	21	3	DL5320112-TB0036042021		9 y 1 m 9 d	2021-02-03	2013-09-16	2019-01-01	IT/CF		Production
BD12	16	3	DL5320112-TB0036042017		9 y 1 m 9 d	2021-02-03	2013-09-16	2019-01-01	IT/CF		Production
BD12	14	2	CERNXCHG72		9 y 1 m 9 d	2018-11-14	2013-09-16	2019-01-01	IT/CD	support-windows-servers, e-group	Production
BD12	11	3	DL5320112-TB0036042018		9 y 1 m 9 d	2021-02-03	2013-09-16	2019-01-01	IT/CF		Production



Action log



IT Computing Facilities
Data Center 0513-R-0060

Search assets by Label:

two characters min.

Reports: [Asset](#) [Power](#) [Network](#) [Age](#) [Log](#)

[Expand Map >>](#)

[Advanced](#) [Custom Search](#)

0513-R-0060

Show statistics

Showing: [Overview](#)

[Power/Temp/Hum](#)

Mozilla Firefox

Data Center 0513-R- Search Results I73368600596902 opendcim.cern.ch/re

https://opendcim.cern.ch/report_logging?dc=17

90%

Signed in as: jpolok Sign out Directory



IT Computing Facilities Log View/Export

Search assets by Label:

two characters min.

[Advanced](#) [Custom Search](#)

- Reports
- User Administration
- Issue Escalation
- Project Catalog
- Template Management
- Infrastructure Mgmt
- Bulk Importer
- Material Management
- Power Management
- Path Connections
- Edit Configuration

- CERN
- 0513
- + 0513-R-0006
- + 0513-R-0012
- + 0513-R-0015
- + 0513-R-0018
- + 0513-R-0050
- + 0513-R-0060
- + 0513-S-0034
- + 0613
- + 0773
- + 0874
- + 6045
- + 6074
- + OTHER-ROOMS
- General Storage Room

Select one of view criteria

Data Center: [0513-R-0060](#) Zone: [All](#) Row: [All](#) Cabinet: [All](#)

Limit results to last: [24 hours](#) before: [today](#)

[View](#)

Search:

[Copy](#) [Excel](#) [CSV](#) [Columns](#) [Print](#)

Data Center	Zone	Row	Cabinet	Label	Timestamp	Action	Property	Old value	New value
0513-R-0060	BB	BB 01-15	BB13	ITHDP1005	2022-10-25 09:07:55	Update	GNITicket	INC3278652	
0513-R-0060	BA	BA 01-15	BA01	ITHDP-NXCALS-ONLINE5002	2022-10-25 09:07:54	Update	GNITicket	INC3278666	
0513-R-0060	BA	BA 01-15	BA01	ITHDP-NXCALS-ONLINE5001	2022-10-25 09:07:53	Update	GNITicket	INC3278774	
0513-R-0060	BD	BD 01-15	BD14	CERNIN36	2022-10-25 08:17:48	Update	GNITicket		
0513-R-0060	BD	BD 01-15	BD06	E513-E-RJUXM-V10	2022-10-25 06:36:39	Update	PrimaryIP	g513-e-rjuxm-10.cern.ch	e513-e-rjuxm-v10.cern.ch
0513-R-0060	BD	BD 01-15	BD06	E513-E-RJUXM-V10	2022-10-25 06:36:39	Update	Label	G513-E-RJUXM-10	E513-E-RJUXM-V10
0513-R-0060	BD	BD 01-15	BD06	E513-E-RJUXM-V10	2022-10-25 06:23:57	Update	PrimaryIP	e513-e-rjuxm-v10.cern.ch	e513-e-rjuxm-10.cern.ch
0513-R-0060	BD	BD 01-15	BD06	E513-E-RJUXM-V10	2022-10-25 06:23:57	Update	Label	E513-E-RJUXM-V10	G513-E-RJUXM-10
0513-R-0060	BC	BC 01-15	BC12	CERNDATA82	2022-10-25 05:20:43	Update	Label	DL5827361-239227	CERNDATA82
0513-R-0060	BC	BC 01-15	BC12	CERNDATA18	2022-10-25 05:20:43	Update	Label	DL5827361-239226	CERNDATA18
0513-R-0060	BC	BC 01-15	BC12	CERNDATA16	2022-10-25 05:20:42	Update	Label	DL5827361-239225	CERNDATA16
0513-R-0060	BC	BC 01-15	BC10	CERNDATA81	2022-10-25 05:20:41	Update	Label	DL5827361-239224	CERNDATA81
0513-R-0060	BC	BC 01-15	BC12	CERNDATA14	2022-10-25 05:20:40	Update	Label	DL5827361-239223	CERNDATA14
0513-R-0060	BC	BC 01-15	BC10	CERNDATA17	2022-10-25 05:20:40	Update	Label	DL5827361-239222	CERNDATA17
0513-R-0060	BC	BC 01-15	BC10	CERNDATA13	2022-10-25 05:20:39	Update	Label	DL5827361-239221	CERNDATA13
0513-R-0060	BC	BC 01-15	BC10	CERNDATA13	2022-10-25 05:20:38	Update	Label	DL5827361-239194	CERNDATA13
0513-R-0060	BC	BC 01-15	BC11	ITOISTST09	2022-10-25 05:20:37	Update	Label	DL5767803-235182	ITOISTST09
0513-R-0060	BC	BC 01-15	BC11	CERNLYNCFE34	2022-10-25 05:20:37	Update	Label	DL5767803-235181	CERNLYNCFE34
0513-R-0060	BC	BC 01-15	BC11	ADFS03	2022-10-25 05:20:36	Update	Label	DL5767803-235180	ADFS03
0513-R-0060	BC	BC 01-15	BC11	ADFS02	2022-10-25 05:20:35	Update	Label	DL5767803-235178	ADFS02
0513-R-0060	BC	BC 01-15	BC11	ADFS01	2022-10-25 05:20:35	Update	Label	DL5767803-235177	ADFS01
0513-R-0060	BC	BC 01-15	BC09	ITOISTST03	2022-10-25 05:20:34	Update	Label	DL5767803-235175	ITOISTST03
0513-R-0060	BC	BC 01-15	BC09	ITOISTST02	2022-10-25 05:20:33	Update	Label	DL5767803-235174	ITOISTST02
0513-R-0060	BC	BC 01-15	BC09	ITOISTST01	2022-10-25 05:20:32	Update	Label	DL5767803-235173	ITOISTST01
0513-R-0060	BC	BC 01-15	BC09	ITOISTST00	2022-10-25 05:20:32	Update	Label	DL5767803-235144	ITOISTST00
0513-R-0060	BC	BC 01-15	BC11	CERNDATA11	2022-10-25 05:20:31	Update	Label	DL5766721-235166	CERNDATA11
0513-R-0060	BC	BC 01-15	BC09	CERNDATA12	2022-10-25 05:20:30	Update	Label	DL5766721-235165	CERNDATA12
0513-R-0060	BC	BC 01-15	BC09	CERNDATA08	2022-10-25 05:20:29	Update	Label	DL5766721-235164	CERNDATA08
0513-R-0060	BC	BC 01-15	BC11	CERNDATA07	2022-10-25 05:20:29	Update	Label	DL5766721-235145	CERNDATA07
0513-R-0060	BC	BC 01-15	BC05	CERNDATA01	2022-10-25 05:20:28	Update	Label	DL5688735-227046	CERNDATA01
0513-R-0060	BC	BC 01-15	BC08	CERNDATA04	2022-10-25 05:20:27	Update	Label	DL5688735-227045	CERNDATA04
0513-R-0060	BC	BC 01-15	BC07	CERNDATA02	2022-10-25 05:20:27	Update	Label	DL5688735-227044	CERNDATA02
0513-R-0060	BC	BC 01-15	BC06	CERNDATA03	2022-10-25 05:20:26	Update	Label	DL5688735-227041	CERNDATA03
0513-R-0060	BC	BC 01-15	BC07	SCCM03	2022-10-25 05:20:25	Update	Label	DL5688722-227068	SCCM03
0513-R-0060	BC	BC 01-15	BC08	CERNV508	2022-10-25 05:20:24	Update	Label	DL5688722-227066	CERNV508
0513-R-0060	BC	BC 01-15	BC08	SCQMDR11	2022-10-25 05:20:24	Update	Label	DL5688722-227065	SCQMDR11

Edit



DCIM Rack Row View

IT Computing Facilities
Cabinet Row BA 01-15 (Rear)

Image	Label
<p>Device</p> <p>Measured Power 3.88 / 5 kW</p> <p>Computed Power</p>	<p>Device</p> <p>Measured Power 3.88 / 5 kW</p> <p>Computed Power</p>
<p>Device</p> <p>Measured Power 4.48 / 5 kW</p> <p>Computed Power</p>	<p>Device</p> <p>Measured Power 4.48 / 5 kW</p> <p>Computed Power</p>
<p>Device</p> <p>Measured Power 7.21 / 7 kW</p> <p>Computed Power</p>	<p>Device</p> <p>Measured Power 7.21 / 7 kW</p> <p>Computed Power</p>
<p>Device</p> <p>Measured Power 1.26 / 5 kW</p> <p>Computed Power</p>	<p>Device</p> <p>Measured Power 1.26 / 5 kW</p> <p>Computed Power</p>
<p>Device</p> <p>Measured Power 3.06 / 5 kW</p> <p>Computed Power</p>	<p>Device</p> <p>Measured Power 3.33 / 5 kW</p> <p>Computed Power</p>

DCIM Asset

Manufacturer Date: 2022-04-26
 Asset Tag: HCCPDU027-0000014
 Dept Owner: TIFA
 Primary Contact: ppa-rd, e-group
 Manufacturer: BAP-ns
 Model: PK3-3316U
 Provision:
 Device Status:
 Device Type: CDU
 Install Date: 2022-05-18
 Primary IP: ppa-ba13-01.ammch
 Serial Number: LAB00170-202200034
 Warranty Expiration: 2023-04-26

CERN Accelerating science

DCIM IT Computing Data Center 0

Search assets by Label: two characters min.

Reports Asset Power Network Aps Log

Advanced Custom Search

Reports
 User Administration
 Issue Escalation
 Project Catalog
 Template Management
 Infrastructure Mgmt
 Bulk Importer
 Material Management
 Power Management
 Path Connections
 Edit Configuration

0513-R-0060

- CERN
- 0513
- 0513-R-0006
- 0513-R-0012
- 0513-R-0015
- 0513-R-0018
- 0513-R-0050
- 0513-R-0060
- 0513-S-0034
- + 0613
- + 0773
- + 0874
- + 6045
- + 6074
- OTHER-ROOMS
- General Storage Room

0513

https://opendcim.cern.ch/cabnavigator?cabinetid=95330



Rack view

CERN Accelerating science

DCIM

Search assets by Label:
two characters min.

Advanced Custom Search

Reports
User Administration
Issue Escalation
Project Catalog
Template Management
Infrastructure Mgmt
Bulk Importer
Material Management
Power Management
Path Connections
Edit Configuration

IT Computing Facilities Cabinet BA01

Signed in as: jpolk Directory

Temperature: pdu-ba01-01

Power by pdu: pdu-ba01-01

Position: CYCDD04.BA01

GENERAL

Description: ba01

Dep./Service Unit: ...

Status: I - Installed

DETAILS

Class: CSRRK Rack

Category: ...

Commission Date: 27-Aug-2013

IMPACT Facility

Responsible/Owner

ELEC Powering Pos

Showing: Image Front: Label Rear: Asset Tag

Reports: Asset Power Network Age Log

Markup Key

Device Status:
- Free Space
- Production

Device Owner:
- IT/CF
- IT/CS
- IT/DA

Environmental Sensors

Cabinet Metrics

Space: 84%

Weight (1000): 39%

Computed Watts: 4.17 / 5 kW

Measured Watts: 4.17 / 5 kW

Center of Gravity: 24U

Power Distribution

PDU-BA01-01: 2.09 / 8.87 kW

PDU-BA01-02: 2.08 / 8.87 kW

Cabinet Notes

Inform information: BA01

Cabinet Information

Last Audit: Jul 24, 2022 00:01

Model: Knurr

Data Center: 0513-R-0060

Instal Date: 2013-08-27

Zone: BA

Row: BA 01-15

Tags:

Certify Audit
Add Device
Audit Report
Map Coordinates
Edit Cabinet
Rebuild images
Delete Cabinet

Device overview

Ownership view:

BA10		BA10 (Rear)	
Pos	Device	Pos	Device
47		47	
46	US13-A-MG101-SHP2L-10	46	
45		45	
44	US13-A-IP38-LHP6X-10	44	
43		43	
42		42	
41		41	
40		40	
39		39	
38	DL8200652-0002	38	DL8200652-0002
37		37	
36		36	
35		35	
34	DL8200652-0118	34	DL8200652-0118
33		33	
32		32	
31		31	
30	DL8200652-0012	30	DL8200652-0012
29		29	
28		28	
27		27	
26	DL8200652-0104	26	DL8200652-0104
25		25	
24		24	
23		23	
22	DL8200652-0017	22	DL8200652-0017
21		21	
20		20	
19		19	
18	CD5804035-TC0048066579	18	CD5804035-TC0048066579(Rear)
17		17	
16		16	
15		15	
14	CD5804035-TC0048066401	14	CD5804035-TC0048066401(Rear)
13		13	
12		12	
11		11	

Ownership view details:

- Device Status: Free Space, Production
- Device Owner: EP/CMG, IT/CD, IT/CF, IT/CS, IT/SD
- Environmental Sensors: PDU-BA10-01-S1 (Temp: 49.9°C), PDU-BA10-01-S2 (Temp: 29.3°C), PDU-BA10-01-S3 (Temp: 21.4°C)
- Ownership: BB, BC, BD, BE, BF, UBTR-R-0060, 0513-S-0034, 0613, 773, 6045, 6074, OTHER ROOMS (General Storage Room)



Device view

IT Computing Facilities
Device ITHDP-NXCALS-ONLINE5004

Asset mgmt system

Asset HCCSSYS020-00001821

GENERAL

Long Serial Number: DL8738187-E386345X1B03766-A
 Location: 0513-R-0060 V
 Description: FORMAT CPU server (NXCALS Type #2) system unit
 Day Service (last): CDSYS IT Data Center CS28
 Status: 1 - In-stock at Mainframe
 State: GOOD - On

DETAILS

Class: CDSYS System unit
 Category:
 Budget Code:
 Commission Date: 28-Feb-2022
 Assigned To:
 Criticality:
 Buy for application:
 Status:
 User defined fields:
 Manufacturer lot: DL844872
 Manufacturer: ITRCOOS
 Long Serial Number: DL8738187-E386345X1B03766-A
 Supplier: FZ0001
 Return request ID:
 Delivery approval ID: N074637
 Purchase Order ID: DL8738187
 Departmental Request ID: DR-8219681/IT
 Tender ID: IT-4614/IT
 1566902

Device ITHDP-NXCALS-ONLINE5004

You can identify information and network configuration of the device.

Network database

Information (View history)

Name: ITHDP-NXCALS-ONLINE5004
 Location: 0513-R-0060 V
 Back: BA05

Classifying: CERN-device
 Serial Number: DL8738187-E386345X1B03766-A
 Inventory Number:
 Last changed: 31-03-2022

Generic type: COMPUTER
 Device type: SUPERMICRO H20ZT-B
 Operating system: LINUX ENDOX9000

Description: OPENSTACK (IRONIC) NOC
 Properties: DHCP: ON
 DNS & Forwarding: DNS: ON
 IP: ON

Network Interface Cards

Address	Type	Bound to interface
3C-EC-EF-	IGMP/ARITHMETIC	ITHDP-NXCALS-ONLINE5004.CERN.CH
3C-EC-EF-	IGMP/ARITHMETIC	ITHDP-NXCALS-ONLINE5004-PIPC.CERN.CH

People

Manager: E-GROUP AI-OPENSTACK-ADMIN.IT.IG
 Supervisor: E-GROUP AI-HADOOP-ADMIN.IT.IG
 Information: E-GROUP AI-HADOOP-ADMIN.IT.IG
 +41 73006 14330
 11 - 13.2022 (manager: FZ0001)
 +41 73006 14330 (FZ0001, H400)

Contact for order: USD (polar-us)
 Currency:
 Transport Cost:
 Packaging:
 Articles appearing in the **CERN Log**

Purchase handling system

USD (polar-us)
 Currency:
 Transport Cost:
 Packaging:
 Articles appearing in the **CERN Log**

Order Lines

Item Quantity Description

- 1 8 FORMAT CPU server (ANALYT0)
 - FORMAT CPU server (ANALYT0) according to ITEM #1 of option 1 in attached offer (2021-02-22) response to CERN price request - reference CERN IT-2021-HPC-003 (p0) and technical and commercial configurations, including 3 years off-site warranty service. Country of origin: POLAND (PL), Delivery: 313-853 STOCKAGE-METERN, Procurement Code: 04003100 - Servers (Material), Goods already delivered: No. Date: 06.09.2021. Budget Code: 47327 (EN-2021) - Vendor Services, 47327 (EN-2021) - Database maintenance (p0)net.
- 2 1 FORMAT CPU server (NXCALS Type #1)
 - FORMAT CPU server (NXCALS Type #1) according to ITEM #1 of option 1 in attached offer (2021-02-22) response to CERN price request - reference CERN IT-2021-HPC-003 (p0) and technical and commercial configurations, including 3 years off-site warranty service. Country of origin: POLAND (PL), Delivery: 313-853 STOCKAGE-METERN, Procurement Code: 04003100 - Servers (Material), Goods already delivered: No. Date: 06.09.2021. Budget Code: 47327 (EN-2021) - Vendor Services, 47327 (EN-2021) - Database maintenance (p0)net.
- 3 8 FORMAT CPU server (NXCALS Type #2)
 - FORMAT CPU server (NXCALS Type #2) according to ITEM #1 of option 3 in attached offer (2021-02-22) response to CERN price request - reference CERN IT-2021-HPC-003 (p0) and technical and commercial configurations, including 3 years off-site warranty service. Country of origin: POLAND (PL), Delivery: 313-853 STOCKAGE-METERN, Procurement Code: 04003100 - Servers (Material), Goods already delivered: No. Date: 06.09.2021. Budget Code: 47327 (EN-2021) - Vendor Services, 47327 (EN-2021) - Database maintenance (p0)net.

Asset Tracking

Device ID: 112556
 Status: Production
 Label: ITHDP-NXCALS-ONLINE5004
 Serial Number: DL8738187-E386345X1B03766-A
 Asset Tag: HCCSSYS020-00001821
 Primary IP / Host Name: ithdp-nxcals-online5004.cern.ch
 Manufacture Date: 2022-02-28
 Install Date: 2022-01-19
 Warranty Company: CDC-3YEARS
 Warranty Expiration: 2025-02-28
 Ticket:
 Last Audit Completed: 2022-07-24 00:02
 Departmental Owner: ITDA
 Primary Contact: (ai-hadoop-admin) ai-hadoop-admin...
 Tags:
 Escalation Information:
 Time Period: Select...
 Details: Select...
 Custom Attributes:
 Class: CDSYS
 DeliveryID: 9074167
 DepReqID: DR-8219681/IT
 GNTicket:
 ManufacturerSerial:
 NumInstalls: 1
 Part: HCCSSYS020
 PurchaseID: DL8738187
 ReceptionID: 1566902
 RequestID:
 RetirementEnd: 2027-02-28
 RetirementStart: 2026-08-28
 RetirementStatus:
 Supplier: FZ0001
 SupplierSerial:
 TenderID: IT-4614/IT
 UninstallDate:
 WarrantyID: DL8643872
 Arch: x86_64
 CPU: 2
 CPUThread: 64
 CPUtype: AMD EPYC 7302 16-Core Processor
 HEPicture:
 HEPspec32:
 Lan08Tag: OPENSTACK IRONIC NODE
 PuppetEnvironment: production
 PuppetHostgroup: hadoop_rng/pipser
 RAM: 512

Physical Infrastructure

Cabinet: 0513-R-0060 / BA01
 Parent Device: DL8738187-E386345X1B03766
 Device Class: SUPPL - MBD-H20ZT-B
 Number of slots: 1
 Position: 1
 Vertical position: 0
 Back Side:
 Number of Data Ports: 0
 Nominal Draw (Watts): 0
 Weight: 0
 Power Connections: 0
 Device Type: Server

Attached Assets

Parent: DL8738187-E386345X1B03766
 Type Chassis:
 External Information:
 Info: EDN: Gitlab
 LanDB: Foreman: Monit: Cinnamon
 Device Images:
 N/A
 Notes:
 FORMAT CPU server (NXCALS Type #2) system unit

Operational Log

Date	Add note
2022-01-25	92
2022-01-25	89

Chassis Power Connections

#	Port Name	Device	Device Port	Serial Number	Notes	Wattage
1	P01				2022-01-25	92
2	P02				2022-01-25	89

Software configuration mgmt

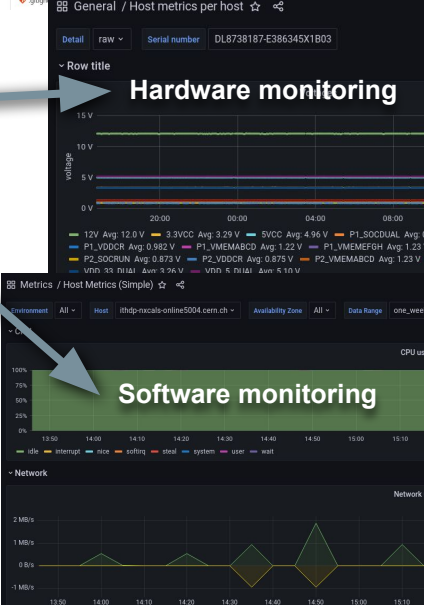
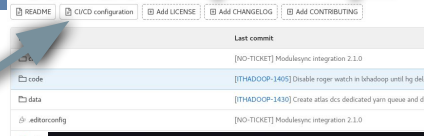
ipuppet-hostgrp-hadoop-ng
 Project ID: 36337
 3,068 Commits 97 Branches 0 Tags 125 MB Project Storage

lasting ipuppet-hostgrp-hadoop-ng

README CUVS configuration Add LICENSE Add CHANGELOGS Add CONTRIBUTING

Last commit: [NO-TICKET] Modularity integration 2.1.0
 [ITHADOOP-1405] Disable ngroup watch in labshop until hg del...
 [ITHADOOP-1430] Create atlas dds dedicated yam space and del...
 [NO-TICKET] Modularity integration 2.1.0

General / Host metrics per host
 Serial number: DL8738187-E386345X1B03





Depending on device type:

Hypervisor system

VM Hostname	Puppet Hostgroup/Env	Owner	Primary Contact	Last Updated	
dbod-cr003	dbod/instances/critical/production	IT/DA	dbondemand-admin, e-group	2022-09-21 13:19:02	Monit
indico-cern-lb0	indico/haproxy/prod/production	IT/CA	indico-administration, e-group	2022-06-21 18:13:06	Monit
lxlicenwolftram04	lxlicen/lxlicen_noflex/lxlicenwolftram04	IT/CD	lx-cc-vmsrvadmins, e-group	2022-06-13 16:25:20	Monit
maportall01	gis/porta/vmapportall/production	SCC/SAM	gis-puppet-hostgroup-manager, e-group	2022-09-01 12:35:47	Monit
mb100	mis/brokers/agilemf/production	IT/DA	mis-team, e-group	2022-10-13 14:53:25	Monit
opendcim	itdcim/opendcim/production	IT/FA	opendcim-admins, e-group	2022-09-21 16:24:56	Monit
wintlicen06	windows_infrastructure/licen/production	IT/CD	lx-cc-vmsrvadmins, e-group	2022-07-19 22:27:50	Monit

Sensor

Sensor Readings

Temp: 35.9 °C

Hum: N/A

Measured: 2022-10-24 17:00

Network switch

Network Connections	#	Port Name	Device	Device Port	Interface	Service	Media
	0	L00	U513-A-MG101-SHP2M-16	N05	u513-a-mg101-shp2l-5		NET
	3	N03					1GB
	4	N04					1GB
	5	N05					1GB
	6	N06					1GB
	7	N07					1GB
	8	N08					1GB
	9	N09					1GB
	10	N10					1GB
	11	N11					1GB
	12	N12					1GB
	15	N15					1GB
	16	N16					1GB
	17	N17					1GB
	19	N19					1GB
	25	N25	I73368607372500	N01	I73368607372500-ipmi	513-C-MG101	1GB
	26	N26	I73368605687386	N01	I73368605687386-ipmi	513-C-MG101	1GB
	27	N27	I73368600596902	N01	I73368600596902-ipmi	513-C-MG101	1GB
	28	N28	I73368608017405	N01	I73368608017405-ipmi	513-C-MG101	1GB
	29	N29	I73368609620661	N01	I73368609620661-ipmi	513-C-MG101	1GB
	30	N30	I73368602443237	N01	I73368602443237-ipmi	513-C-MG101	1GB
	31	N31	I73368602844281	N01	I73368602844281-ipmi	513-C-MG101	1GB
	32	N32	I73368608230476	N01	I73368608230476-ipmi	513-C-MG101	1GB

Storage array

Network Connections	#	Port Name	Device	Device Port	Interface	Service	Media	Color
	1	S01	ITHDP-NXCALS4014	S02	storage		STOR	yellow

PDU

Power Specifications

Source Panel: E0063.04*43 Elow

Voltage: 400 / 231

Breaker Size (F of Poles): 3 v

Panel Pole Number: 1

All Breaker Poles: 1-2-3

Input Amperage: 16

Uptime: 216 d 21 h 15 m 34 s

Firmware Version: Senty Switched CDU Version 716

Measured Wats: Total 1982 W

Measured Wats Phase L1: 641 / 2955 W

Measured Wats Phase L2: 535 / 2955 W

Measured Wats Phase L3: 495 / 2955 W

Automatic Transfer Switch

Fall Safe Switch:

Source Panel (Secondary Source): Select Panel

Panel Pole Number (Secondary Source): 0

Notes

Server Tech PDU

Power panel

Power Panel ID: EOD77.03*43

Panel Name: EOD77.03*43

Number of Poles: 1

Main Breaker Amperage: 100

Panel Voltage: 400

Numbering Scheme: Busway

Parent Panel: EOD77*43

Parent Breaker Name: 3

Panel Meter IP Address: 0513-R-0060

CDU/Meter Template: POWER PANEL

Data Center (for Mapping): OS13-R-0060

[Update](#) [Delete](#) [Map Coordinates](#)

Panel Schedule

- 1 BE04 PDU-BE04-02
- BE06 PDU-BE06-02
- BE08 PDU-BE08-02
- BE10 PDU-BE10-02
- BE12 PDU-BE12-02
- BE14 PDU-BE14-02

Operational Log	Date						
Network Connections	#	Port Name	Device	Device Port	Serial Number	Notes	Wattage
	1	L101	DL6921926-R0079004402	P01		24-Nov-2017	52
	2	L102	DL6921926-R007300916	P01		24-Nov-2017	109
	3	L103	DL6921926-R0079004408	P01		24-Nov-2017	54
	4	L104	DL6921926-R0077003312	P01		24-Nov-2017	104
	5	L105	DL6921926-R0079004406	P01		24-Nov-2017	99
	6	L106	CD6922791-BQ8973990014	P02		16-Nov-2017	461
	7	L107	CD6922791-BQ8973990016	P02		16-Nov-2017	339
	8	L108	DL6921926-R0079004427	P02		24-Nov-2017	94
	9	L109	DL6921926-R0079004402	P02		24-Nov-2017	503
	10	L100	DL6921926-R007300916	P02		24-Nov-2017	101
	11	L103	DL6921926-R0079004408	P02		24-Nov-2017	148
	12	L104	DL6921926-R0079004417	P01		24-Nov-2017	99
	13	L105	DL6921926-R0079004420	P02		24-Nov-2017	56
	14	L106	CD6922791-BQ8973990034	P02		16-Nov-2017	452
	15	L107	CD6922791-BQ8973990014	P01		16-Nov-2017	460
	16	L108					0
	17	L101					150
	18	L102	DL6921926-R0079004410	P02		24-Nov-2017	172
	19	L103	DL6921926-R0077003312	P01		24-Nov-2017	108
	20	L104	DL6921926-R0079004406	P01		24-Nov-2017	99
	21	L105	DL6921926-R0079004417	P02		24-Nov-2017	99
	22	L106	CD6922791-BQ8973990036	P02		16-Nov-2017	531
	23	L107	CD6922791-BQ8973990034	P01		16-Nov-2017	454
	24	L108					56



IT Computing Facilities Audit report for cabinet CF10

Last cabinet audit: 2022-07-30 17:55 (uploader - uploader, uploader)

Search:

Copy Excel CSV Columns Print

Label	Serial No	Asset Tag	Power Connections	Device Model	Audit Stamp
B7G11P4488	DL6636494-210230115010H3000337-1	HCCSSYS015-00000549		HUAW01 HUAWEI-1U-TWIN-SYSTEM-UNIT	2022-07-30 17:55
B7G11P5402	DL6636494-210230115010H3000306-1	HCCSSYS015-00000425		HUAW01 HUAWEI-1U-TWIN-SYSTEM-UNIT	2022-07-30 17:55
P06636710Y50388	DL6636710-4M0317N308-1	HCCSSYS011-00003505		INTEL HNS2600KP	2022-07-30 17:55
B7G11P2569	DL6636494-210230115010H3000306-2	HCCSSYS015-00000426		HUAW01 HUAWEI-1U-TWIN-SYSTEM-UNIT	2022-07-30 17:55
B7G11P9418	DL6636494-210230115010H3000337-2	HCCSSYS015-00000550		HUAW01 HUAWEI-1U-TWIN-SYSTEM-UNIT	2022-07-30 17:55
P06636710X85498	DL6636710-4M0317N308-2	HCCSSYS011-00003506		INTEL HNS2600KP	2022-07-30 17:55
B7G11P2414	DL6636494-210230115010H3000306-3	HCCSSYS015-00000427		HUAW01 HUAWEI-1U-TWIN-SYSTEM-UNIT	2022-07-30 17:55
B7G11P5603	DL6636494-210230115010H3000337-3	HCCSSYS015-00000551		HUAW01 HUAWEI-1U-TWIN-SYSTEM-UNIT	2022-07-30 17:55
DL6636710-4M0317N308-3	DL6636710-4M0317N308-3	HCCSSYS011-00003507		INTEL HNS2600KP	2022-07-30 17:55
B7G11P3979	DL6636494-210230115010H3000306-4	HCCSSYS015-00000428		HUAW01 HUAWEI-1U-TWIN-SYSTEM-UNIT	2022-07-30 17:55
B7G11P5851	DL6636494-210230115010H3000337-4	HCCSSYS015-00000552		HUAW01 HUAWEI-1U-TWIN-SYSTEM-UNIT	2022-07-30 17:55
P06636710Y95973	DL6636710-4M0317N308-4	HCCSSYS011-00003508		INTEL HNS2600KP	2022-07-30 17:55
PDU-CF10-01	CA582920-AEBQ0000700	HCCSPDU001-00000823		STECH CWG-24V4J458A1	2022-07-30 17:55
DL6636929-HRZ170800081	DL6636929-HRZ170800081	HCCSSAR008-00000052	PDU-CF10-01 [1],PDU-CF10-01 [9]	QUAN JB4242	2022-07-30 17:55
DL6636929-HRZ170800068	DL6636929-HRZ170800068	HCCSSAR008-00000043	PDU-CF10-01 [2],PDU-CF10-01 [10]	QUAN JB4242	2022-07-30 17:55
DL6636929-HRZ170800151	DL6636929-HRZ170800151	HCCSSAR008-00000106	PDU-CF10-01 [3],PDU-CF10-01 [11]	QUAN JB4242	2022-07-30 17:55
DL6636929-HRZ170800112	DL6636929-HRZ170800112	HCCSSAR008-00000075	PDU-CF10-01 [12],PDU-CF10-01 [17]	QUAN JB4242	2022-07-30 17:55
DL6636710-4M0317N308	DL6636710-4M0317N308	HCCSENC023-00000731	PDU-CF10-01 [7],PDU-CF10-01 [22]	INTEL H2216XXKR2	2022-07-30 17:55
DL6636929-HRZ170800193	DL6636929-HRZ170800193	HCCSSAR008-00000135	PDU-CF10-01 [13],PDU-CF10-01 [18]	QUAN JB4242	2022-07-30 17:55
DL6636929-HRZ170800253	DL6636929-HRZ170800253	HCCSSAR008-00000179	PDU-CF10-01 [19],PDU-CF10-01 [4]	QUAN JB4242	2022-07-30 17:55
DL6636929-HRZ170800212	DL6636929-HRZ170800212	HCCSSAR008-00000147	PDU-CF10-01 [20],PDU-CF10-01 [5]	QUAN JB4242	2022-07-30 17:55
DL6636929-HRZ170800199	DL6636929-HRZ170800199	HCCSSAR008-00000139	PDU-CF10-01 [17],PDU-CF10-01 [8]	QUAN JB4242	2022-07-30 17:55
DL6636494-210230115010H3000337	DL6636494-210230115010H3000337	HCCSENC026-00000138	PDU-CF10-01 [15],PDU-CF10-01 [6]	HUAW01 0230072Z	2022-07-30 17:55
DL6636494-210230115010H3000306	DL6636494-210230115010H3000306	HCCSENC026-00000107	PDU-CF10-01 [14],PDU-CF10-01 [14]	HUAW01 0230072Z	2022-07-30 17:55
CABLE PASS-THROUGH	HCCSDUM002-00000495	HCCSDUM002-00000495		UNDEF BRUSH-U1	
US13-C-MG206-SHPBL-CF10	SG39FLYQ48	US13-C-MG206-SHPBL-CF10		HP PROCURVE 2920-48G J9728A	2022-07-30 17:55
CABLE PASS-THROUGH	HCCSDUM002-00000496	HCCSDUM002-00000496		UNDEF BRUSH-U1	

Label Serial No Asset Tag Power Connections Device Model Audit Stamp

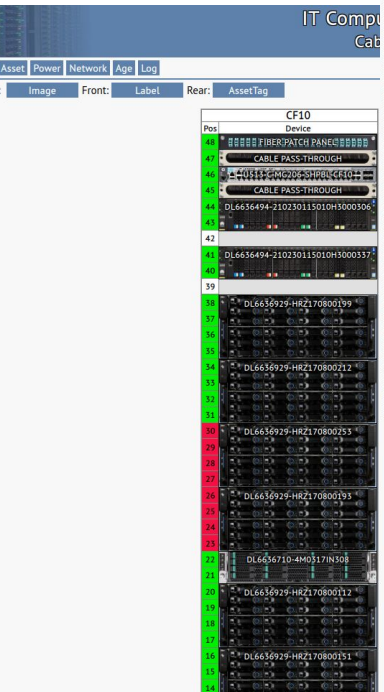
First 1 2 Last

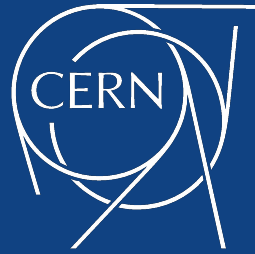
Showing 1 to 27 of 29 records

Cabinet Information

Last Audit: Jul 30, 2022 17:55
uploader uploader
Model: DataRacks
Data Center: 0513-R-0050
Install Date: 2016-10-01
Zone: CF
Row: CF 01-11
Tags:

- Certify Audit
- Add Device
- Audit Report
- Map Coordinates
- Edit Cabinet
- Rebuild Images
- Delete Cabinet





www.cern.ch