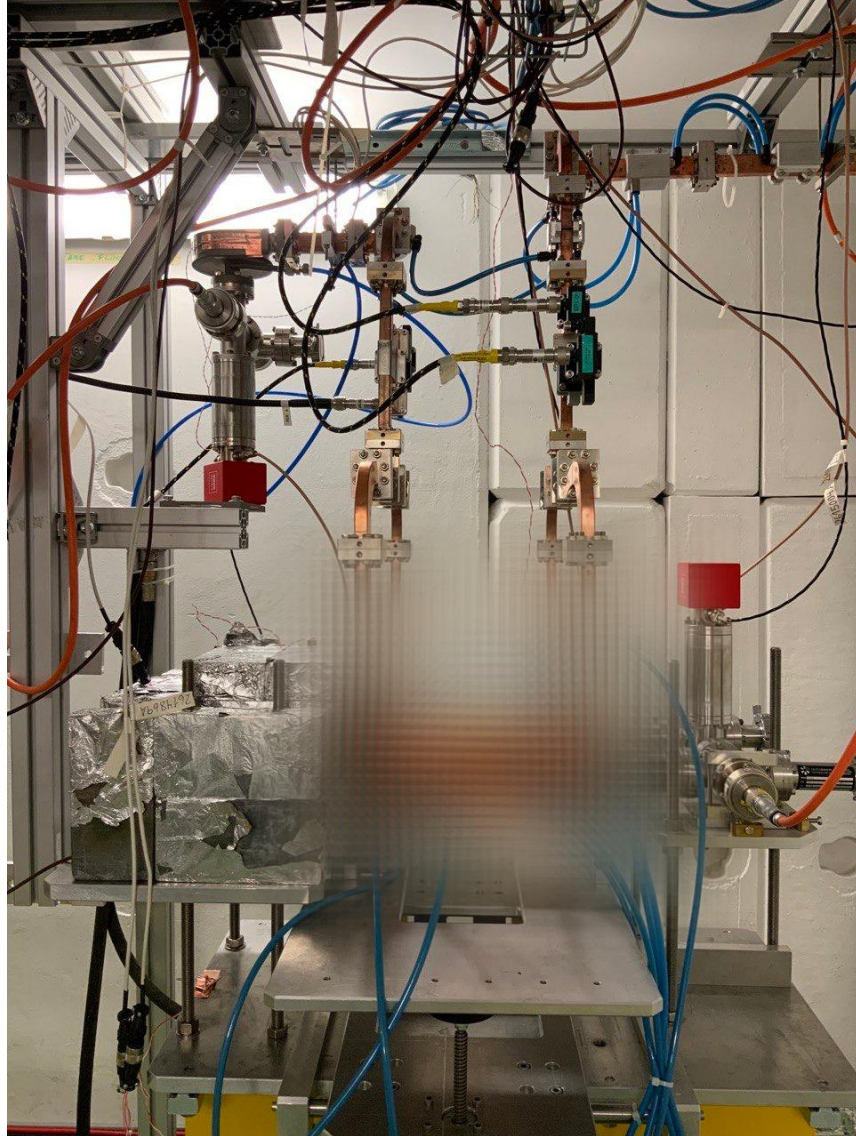


Xboxes Update

04/10/2022

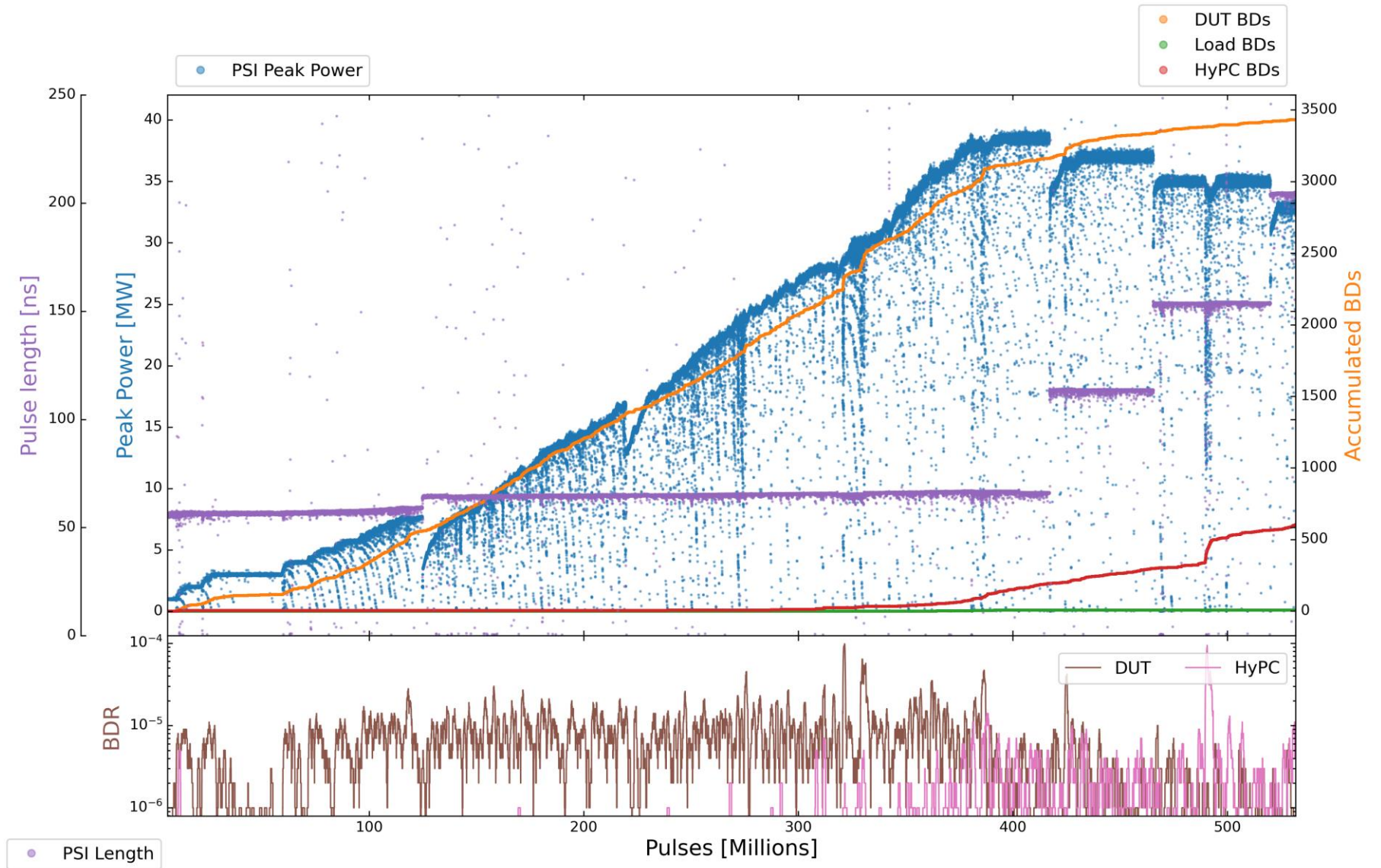
X-Box3 – Line 1



X-Box3 – Line 1

Parameters:

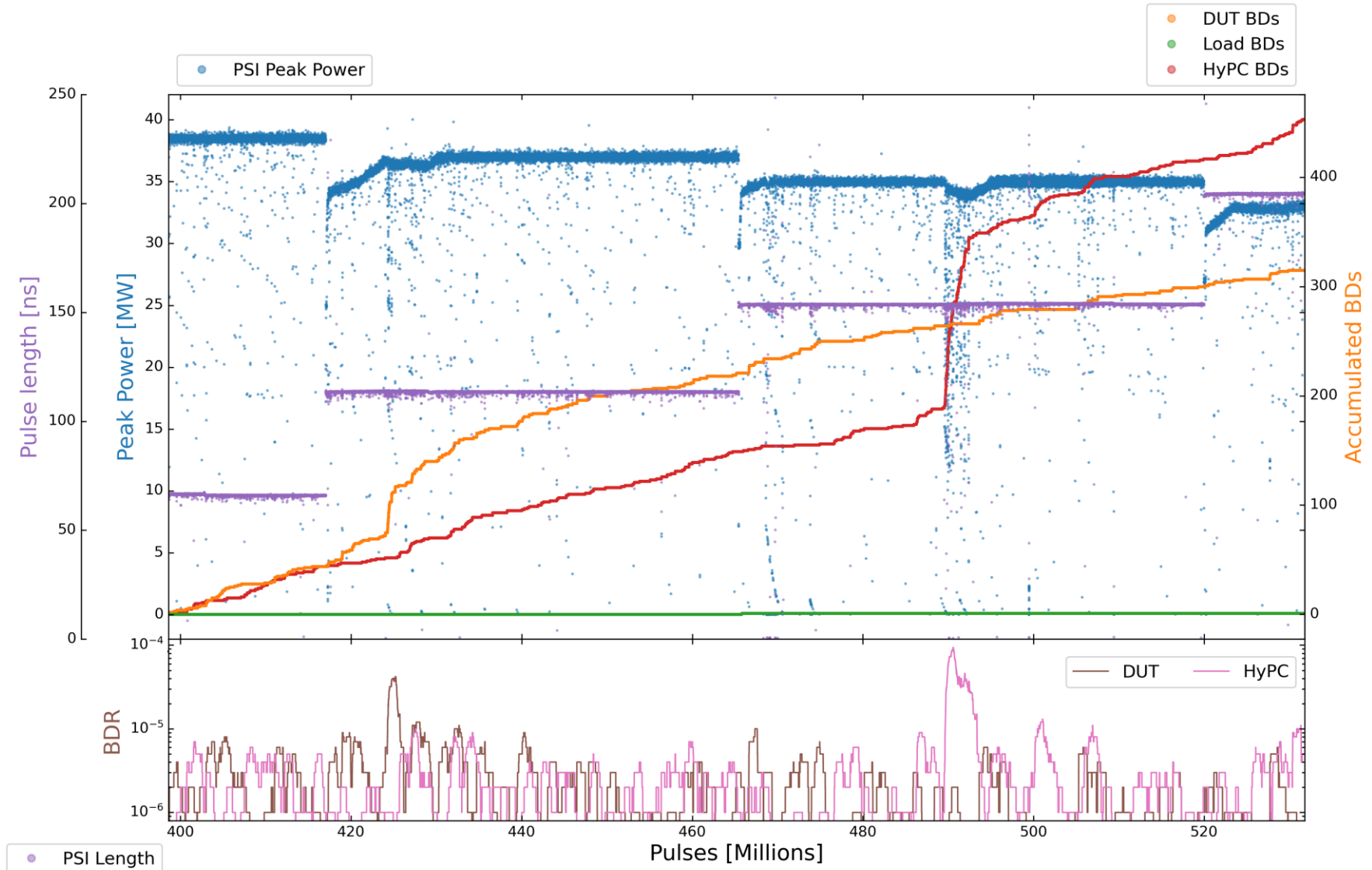
- 1.9 μ s klystron pulse
- 200 ns CP
- **150 Hz** rep rate per line
- **Current Power: 33 MW (peak)**



X-Box3 – Line 1

Parameters:

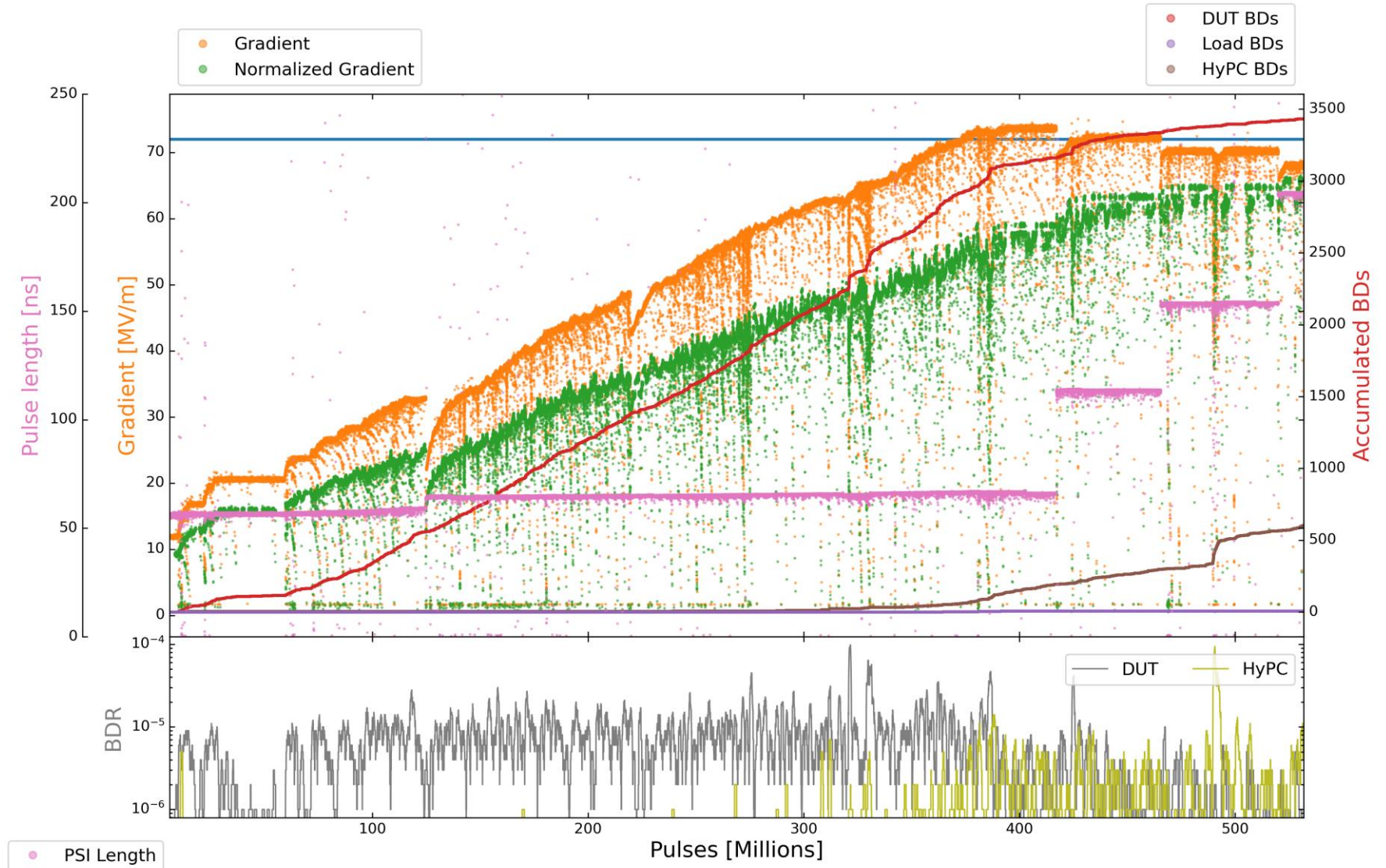
- 1.9 μs klystron pulse
- 200 ns CP
- **150 Hz** rep rate per line
- **Current Power: 33 MW (peak)**



X-Box3 – Line 1

Parameters:

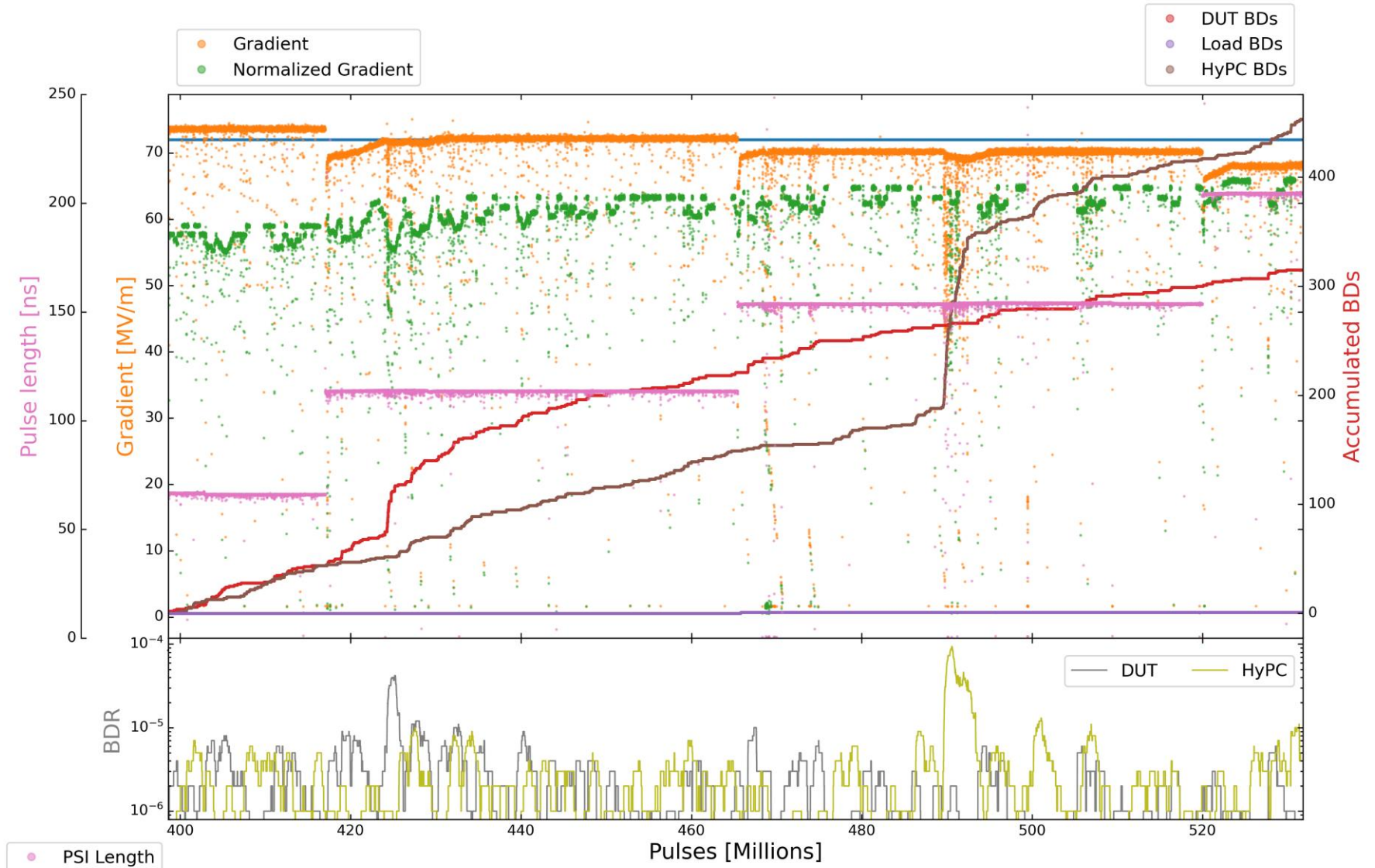
- 1.9 μs klystron pulse
- 200 ns CP
- **150 Hz** rep rate per line
- **Current Power: 33 MW (peak)**



X-Box3 – Line 1

Parameters:

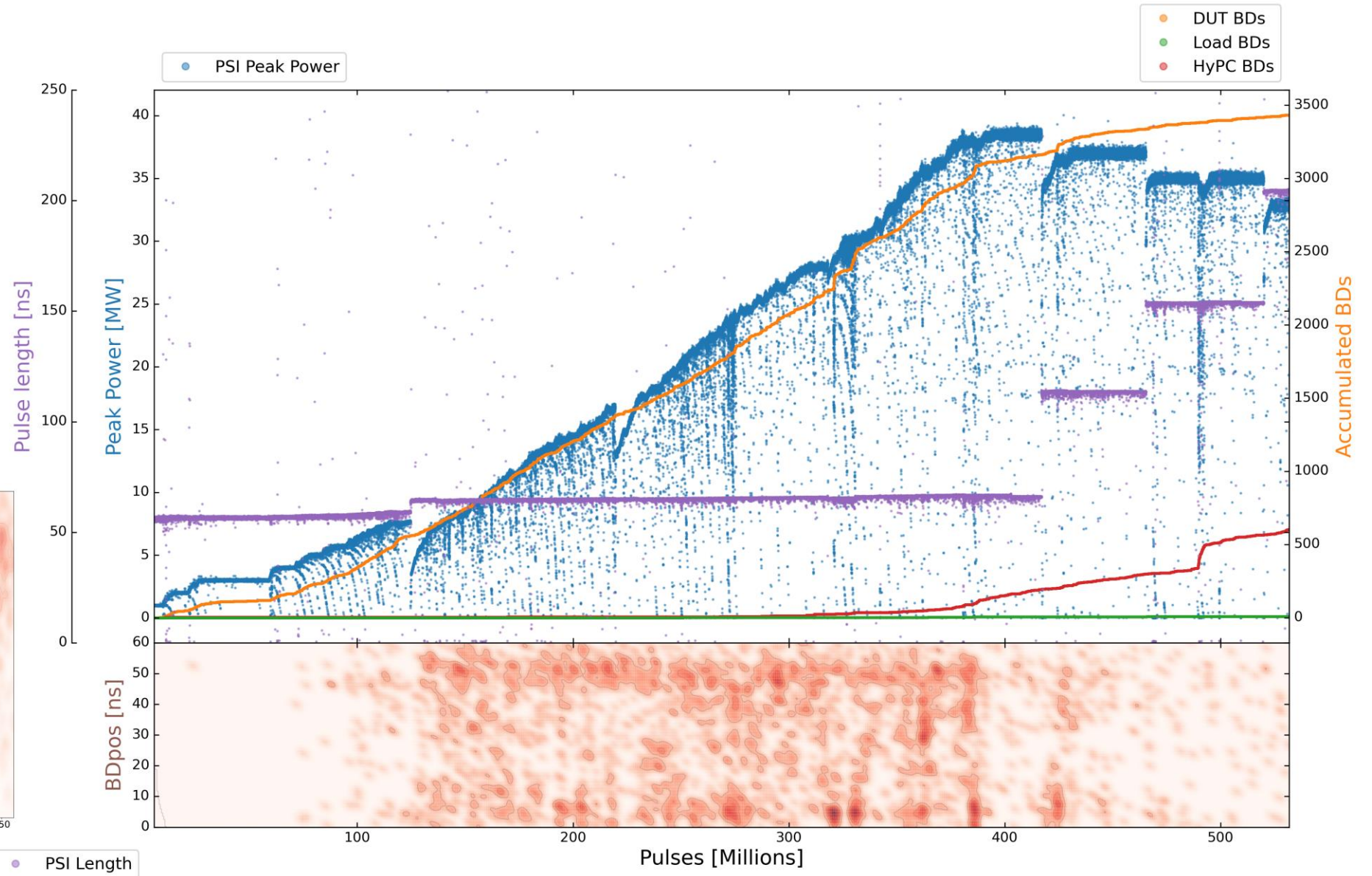
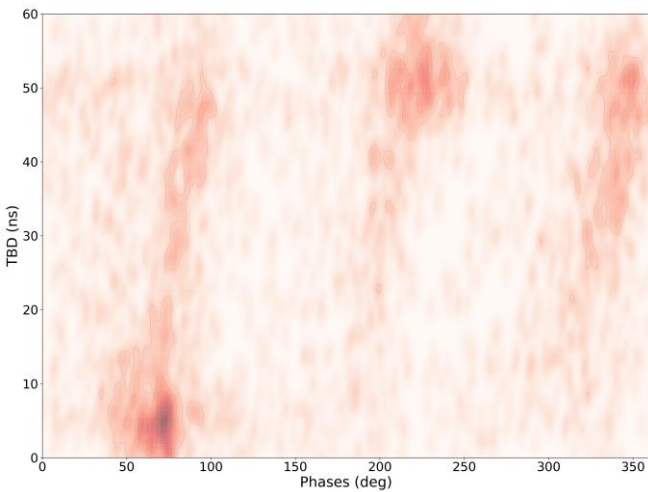
- 1.9 μs klystron pulse
- 200 ns CP
- **150 Hz** rep rate per line
- **Current Power: 33 MW (peak)**



X-Box3 – Line 1

Parameters:

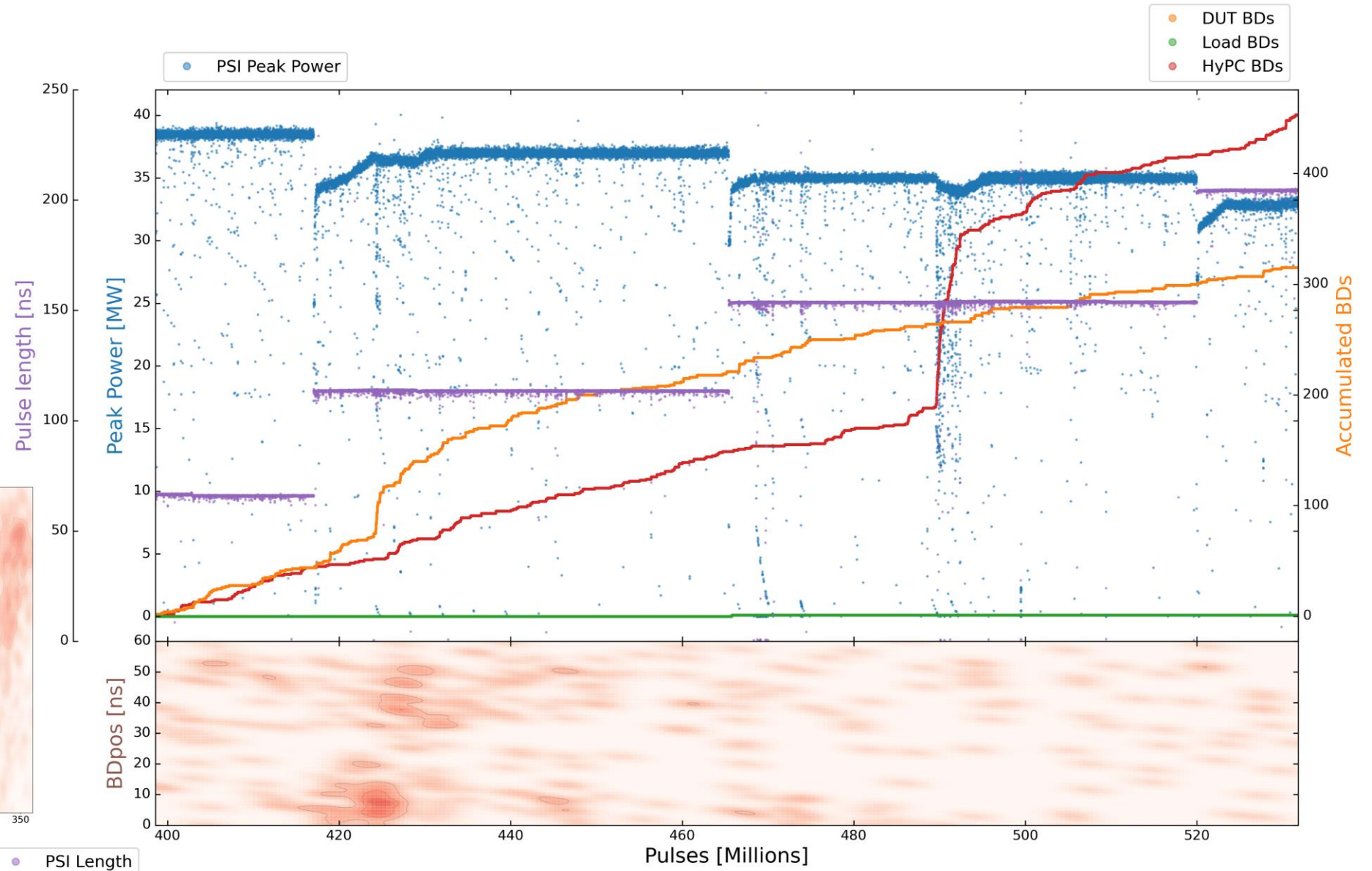
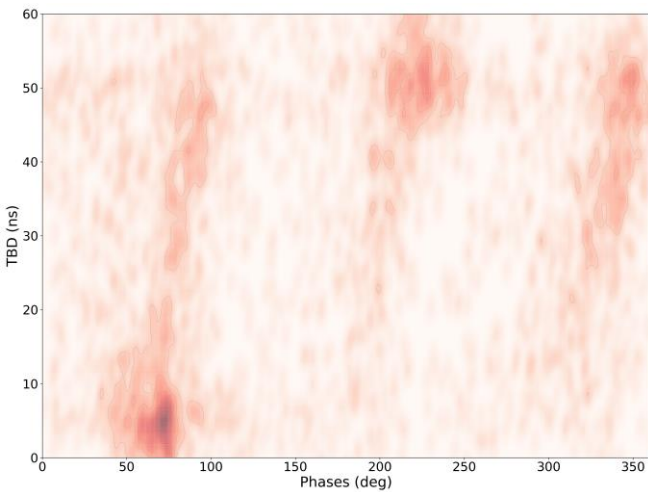
- 1.9 us klystron pulse
- 200 ns CP
- **150 Hz rep rate per line**
- **Current Power: 33 MW (peak)**



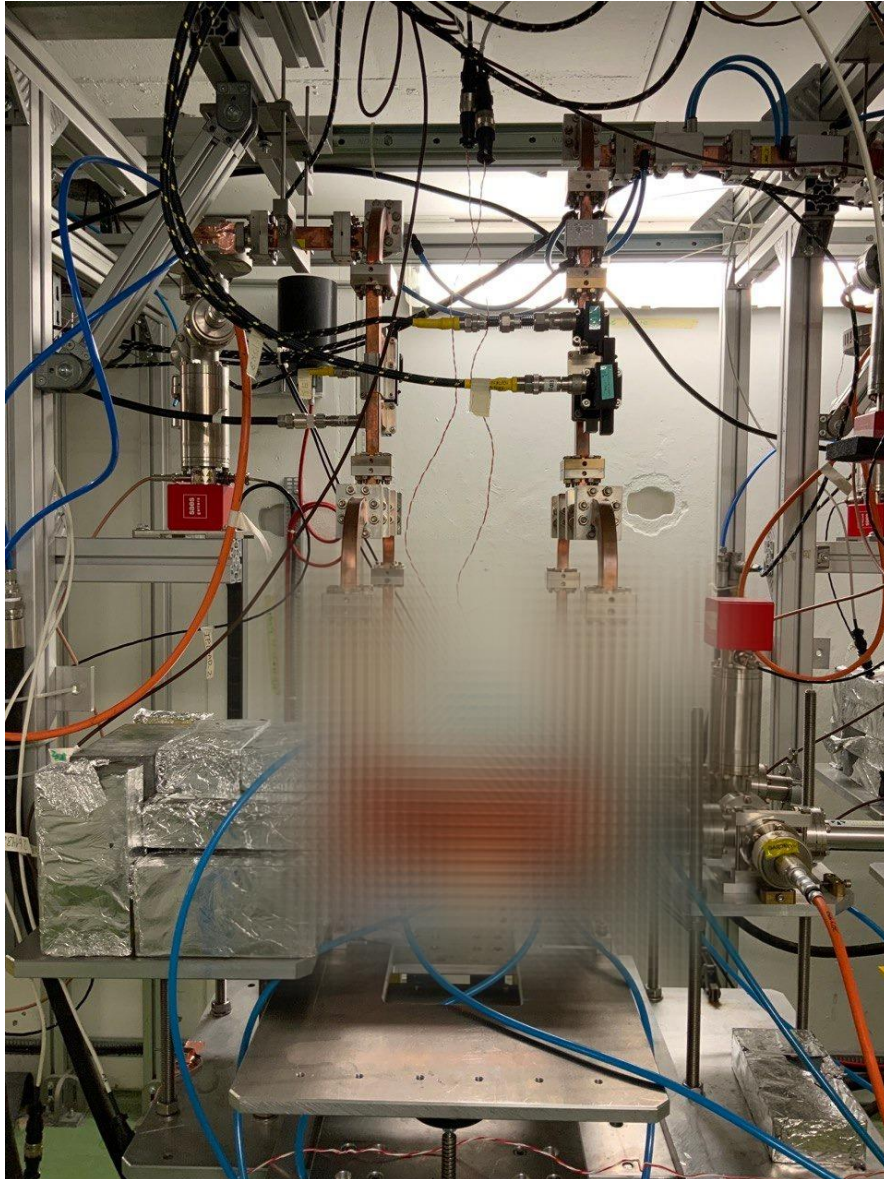
X-Box3 – Line 1

Parameters:

- 1.9 μ s klystron pulse
- 200 ns CP
- **150 Hz** rep rate per line
- **Current Power: 33 MW (peak)**



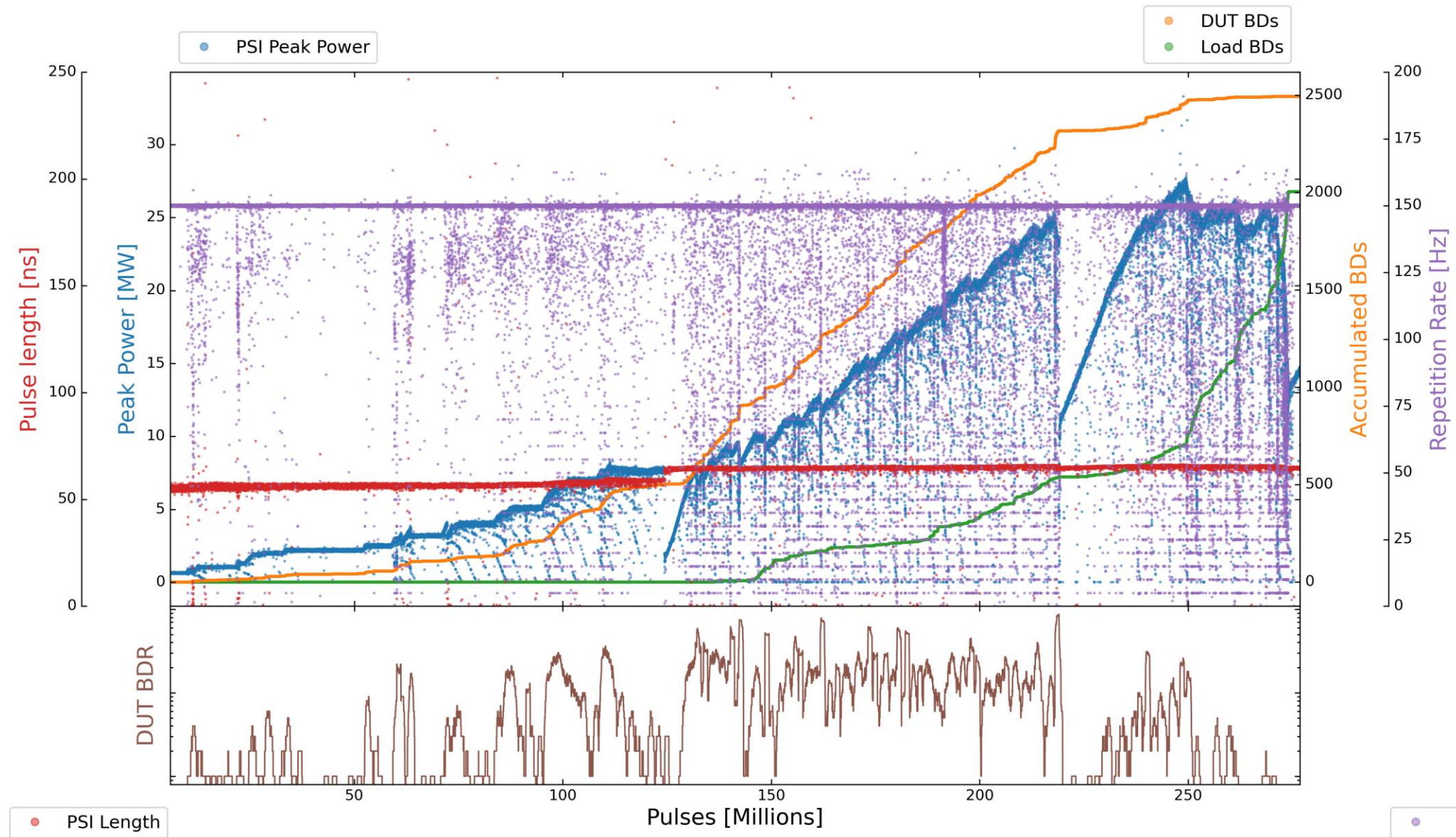
X-Box3 – Line 2



X-Box3 – Line 2

Parameters:

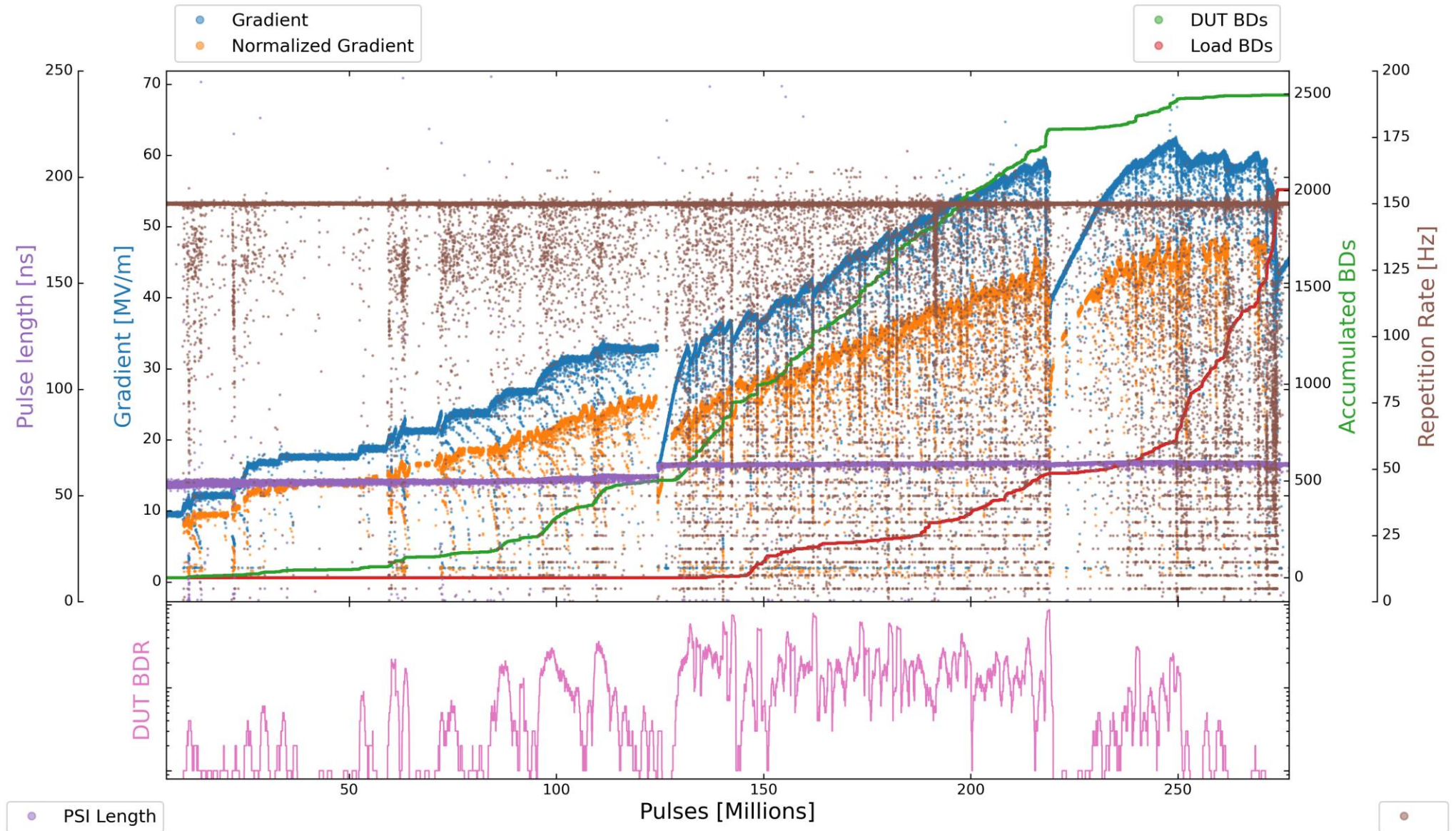
- 1.3 us klystron pulse
- 50 ns CP
- **150 Hz** rep rate per line
- **Current Power: OFF**



X-Box3 – Line 2

Parameters:

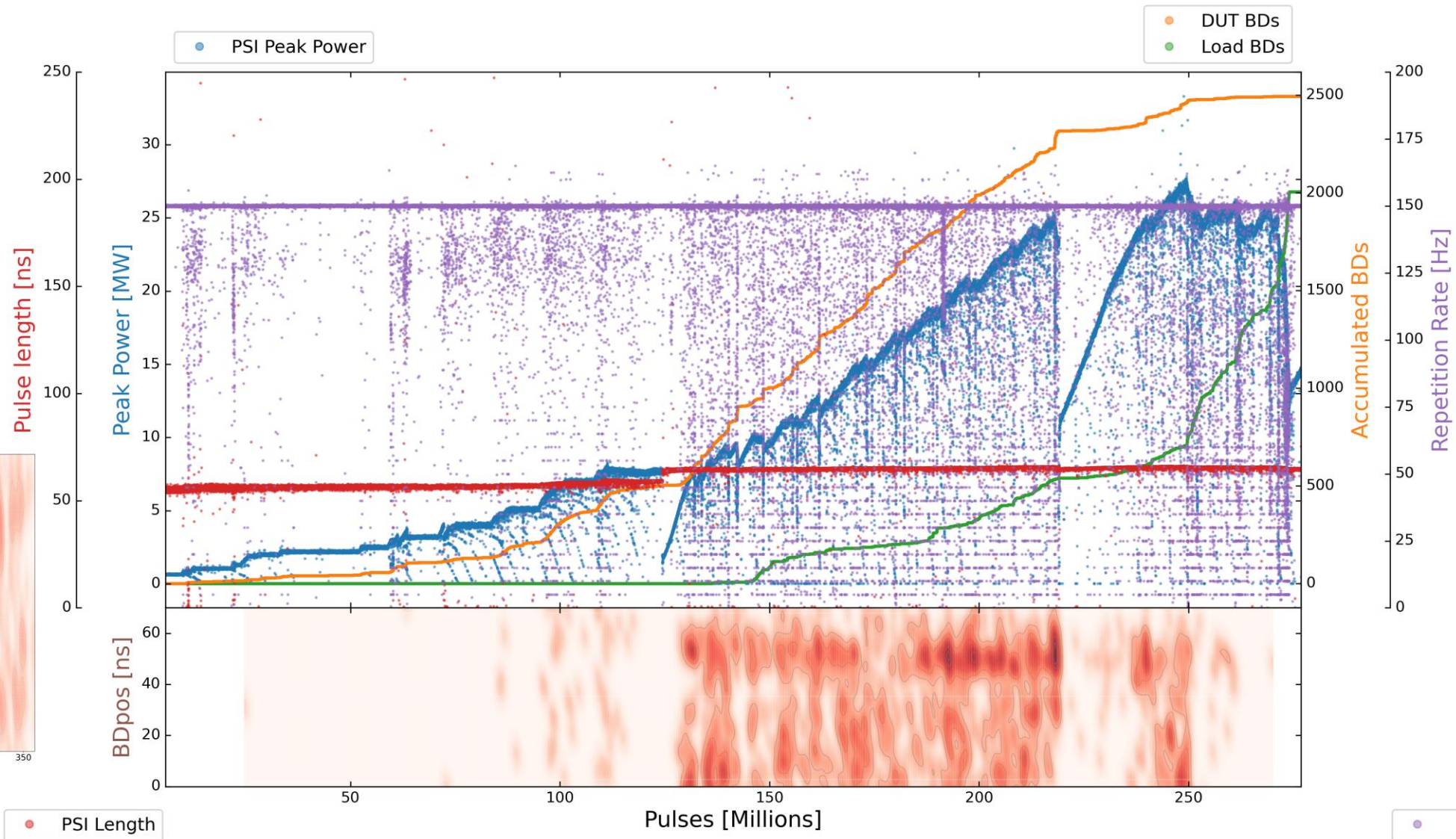
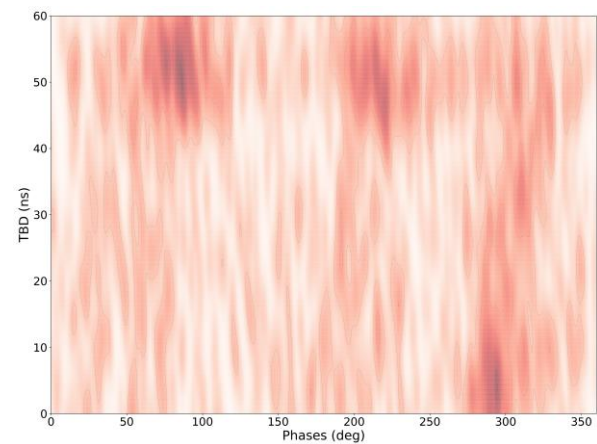
- 1.3 us klystron pulse
- 50 ns CP
- **150 Hz** rep rate per line
- **Current Power: OFF**



X-Box3 – Line 2

Parameters:

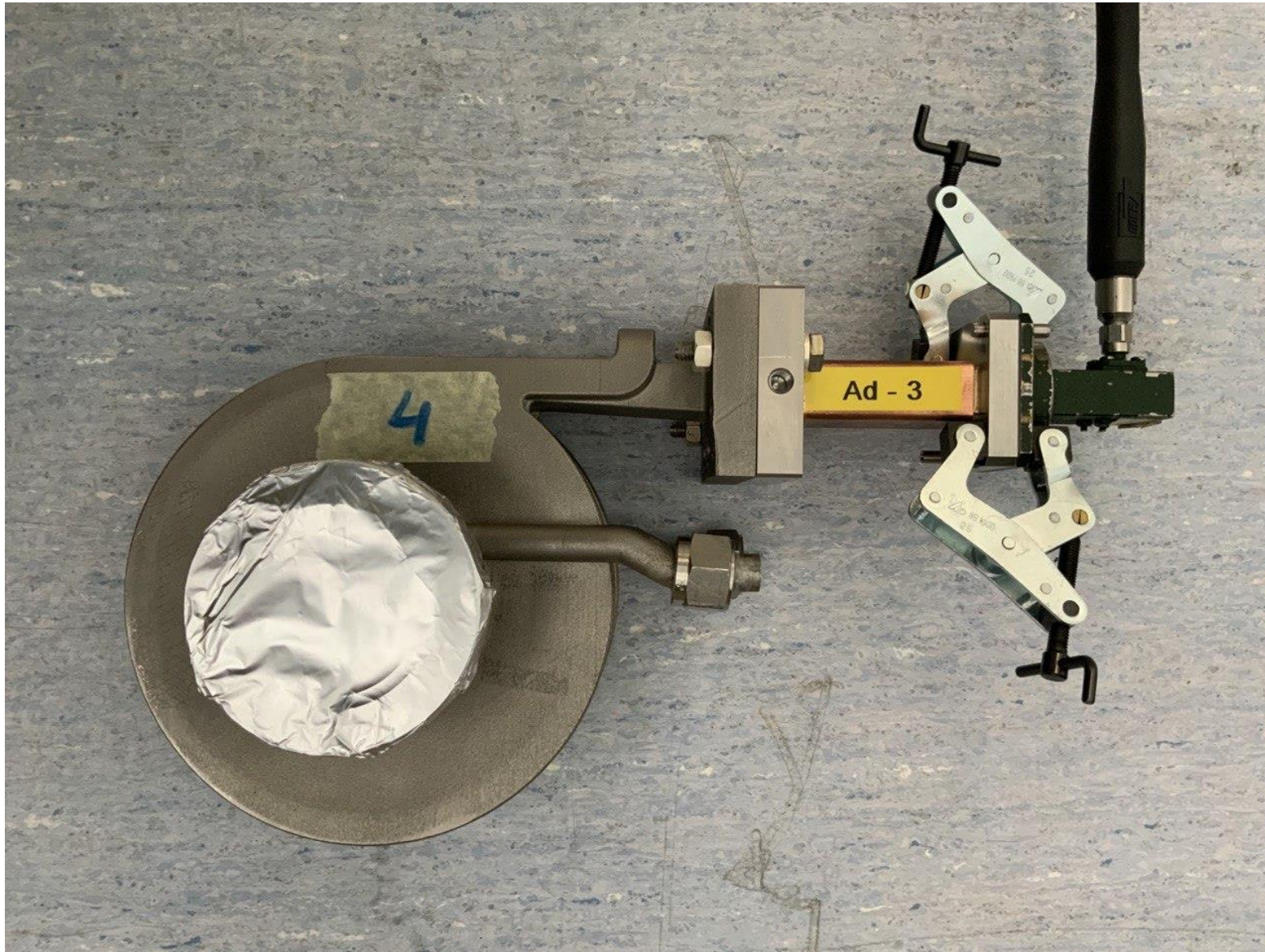
- 1.3 us klystron pulse
- 50 ns CP
- **150 Hz rep rate per line**
- **Current Power: OFF**



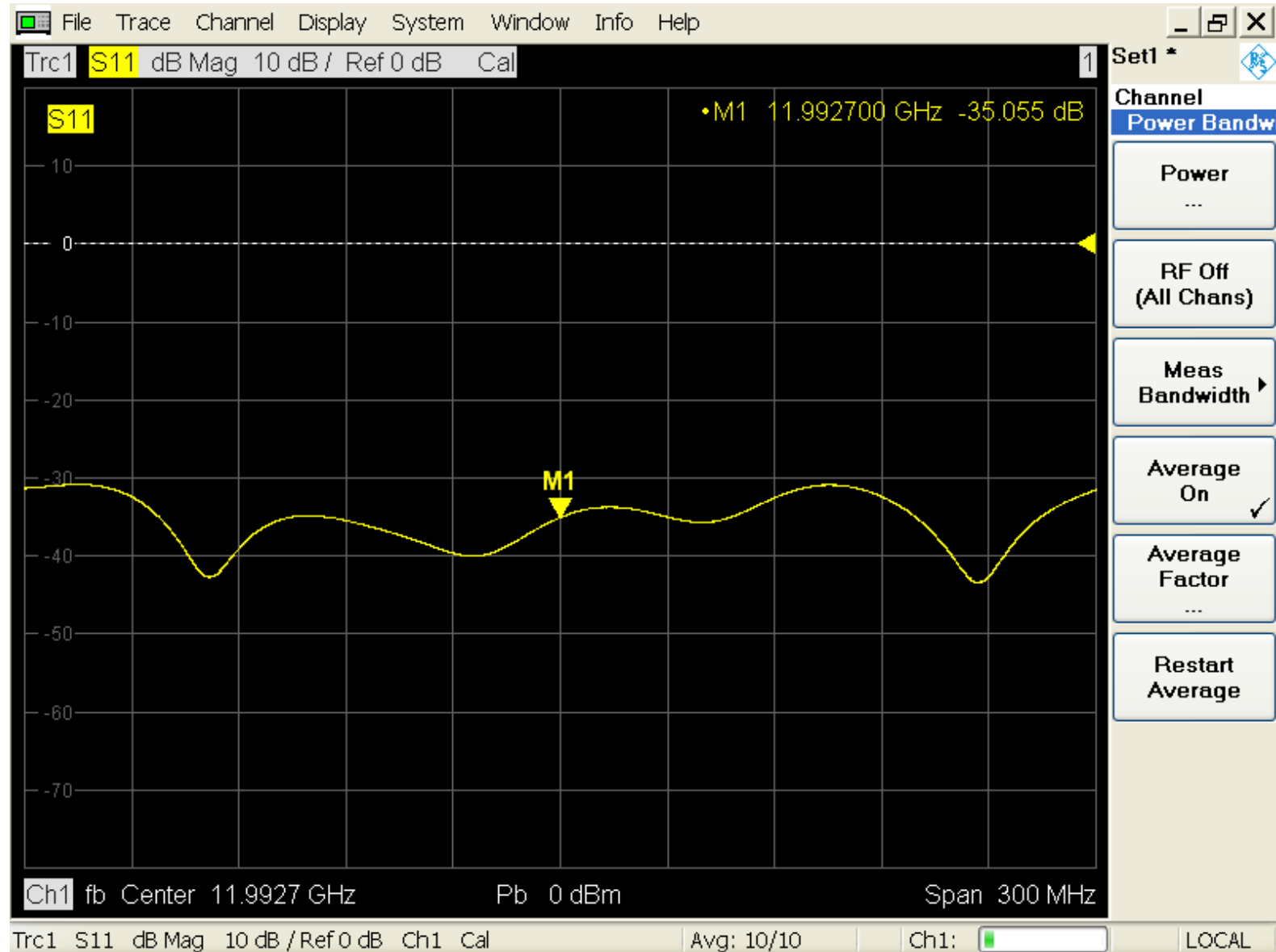
• PSI Length

•

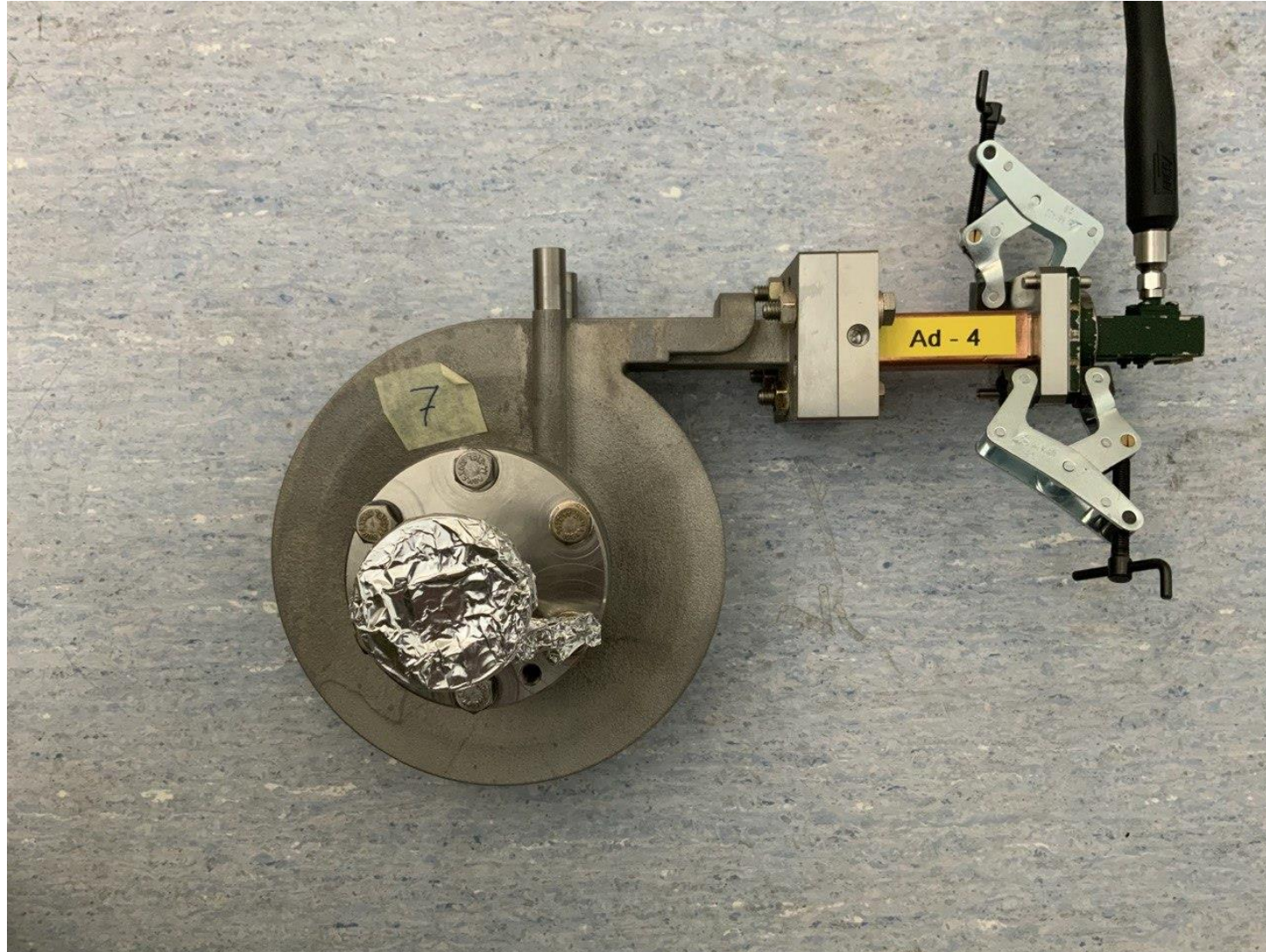
X-Box3 Spiral Load V1



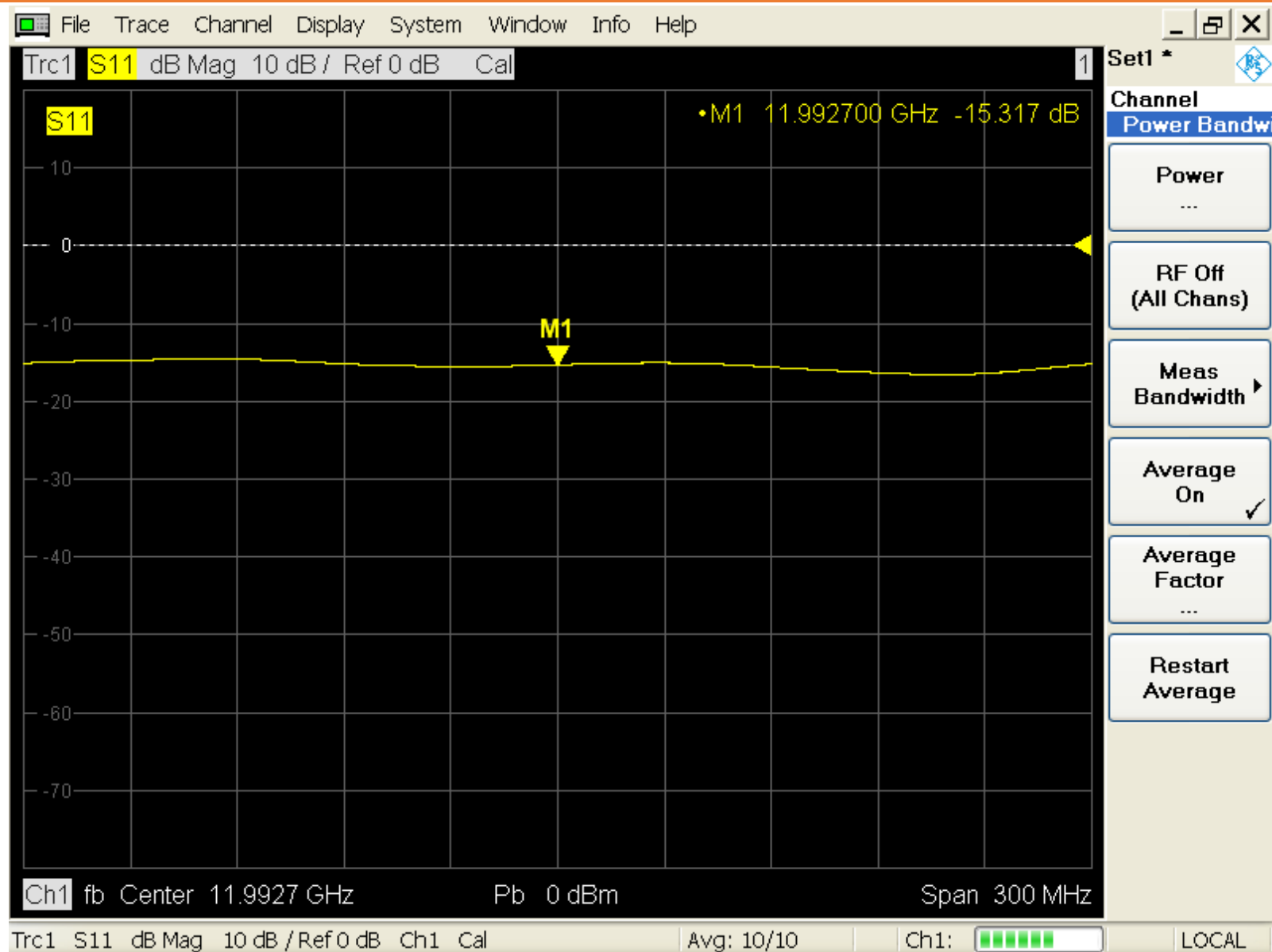
X-Box3 Spiral Load V1 – S11



X-Box3 Spiral Load V2



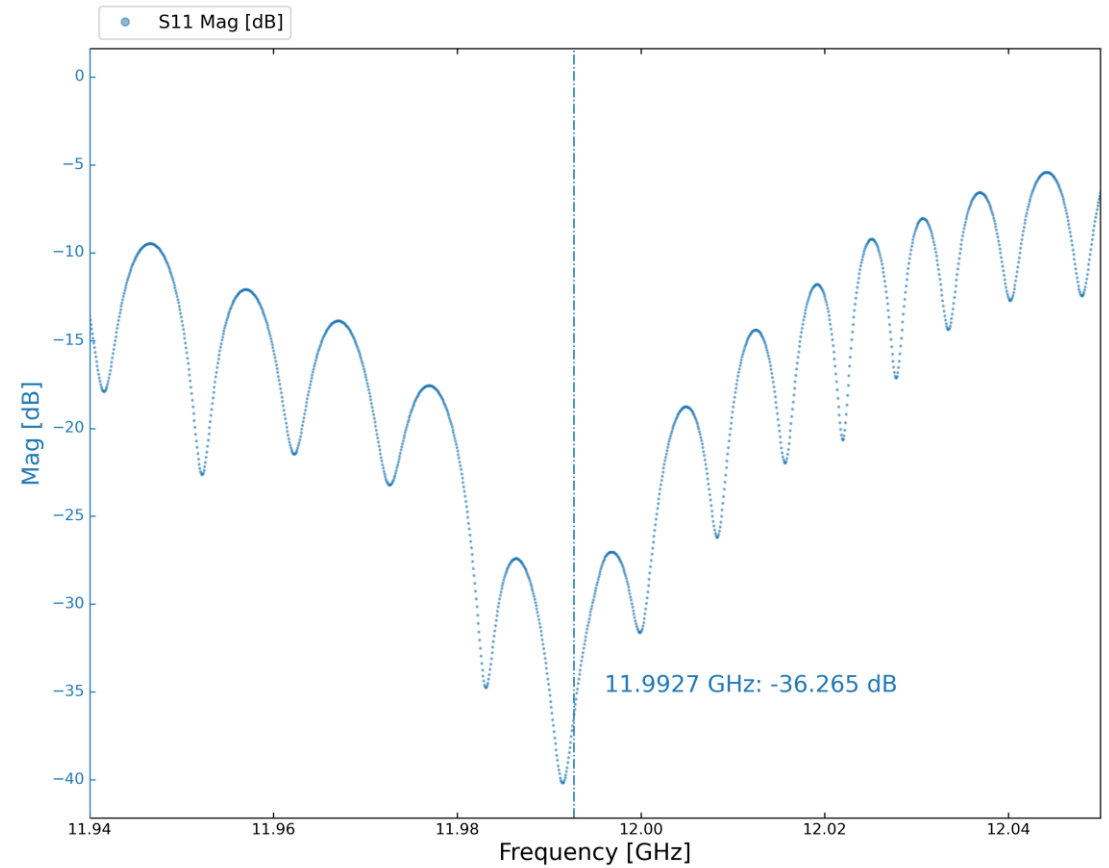
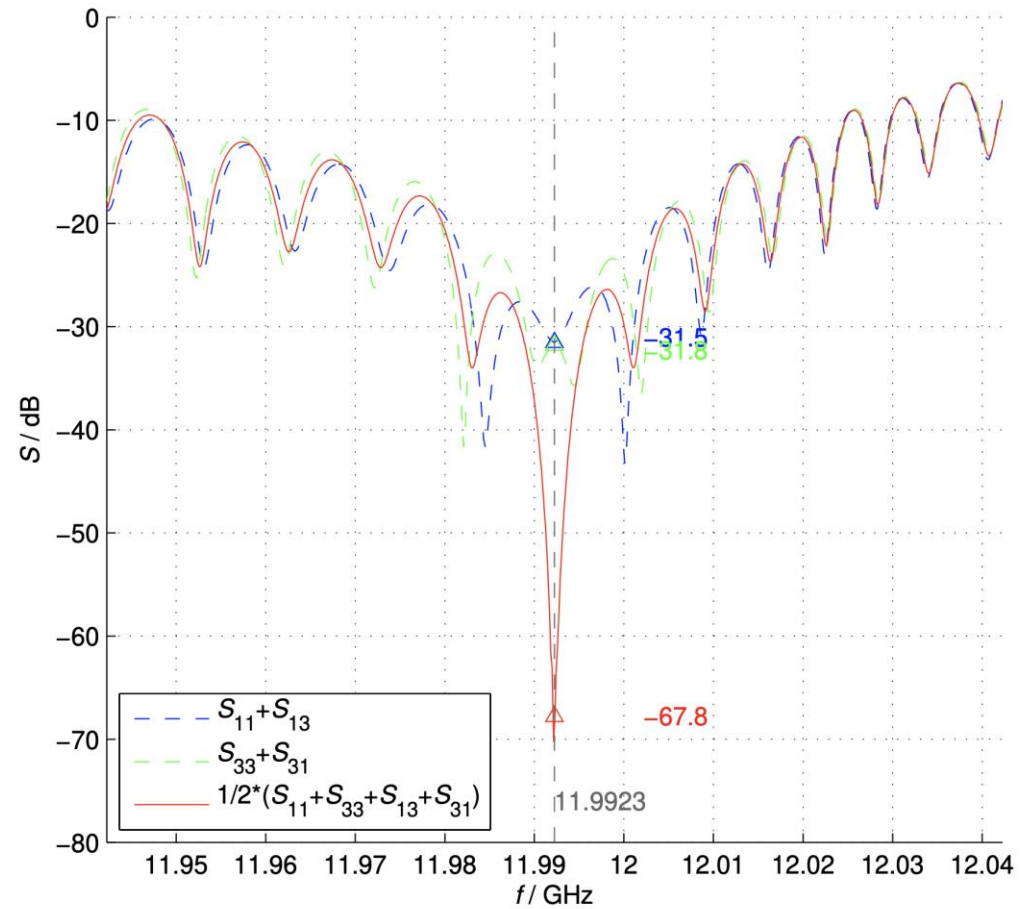
X-Box3 Spiral Load V2 – S11



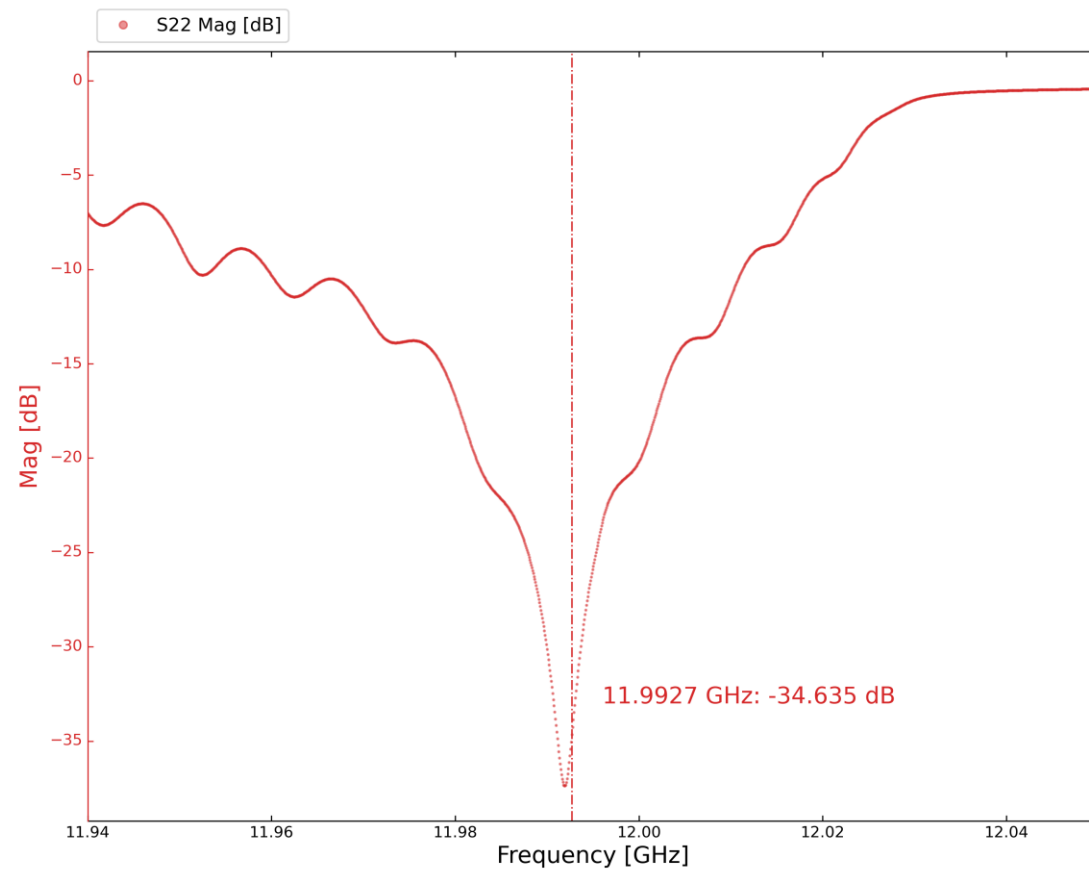
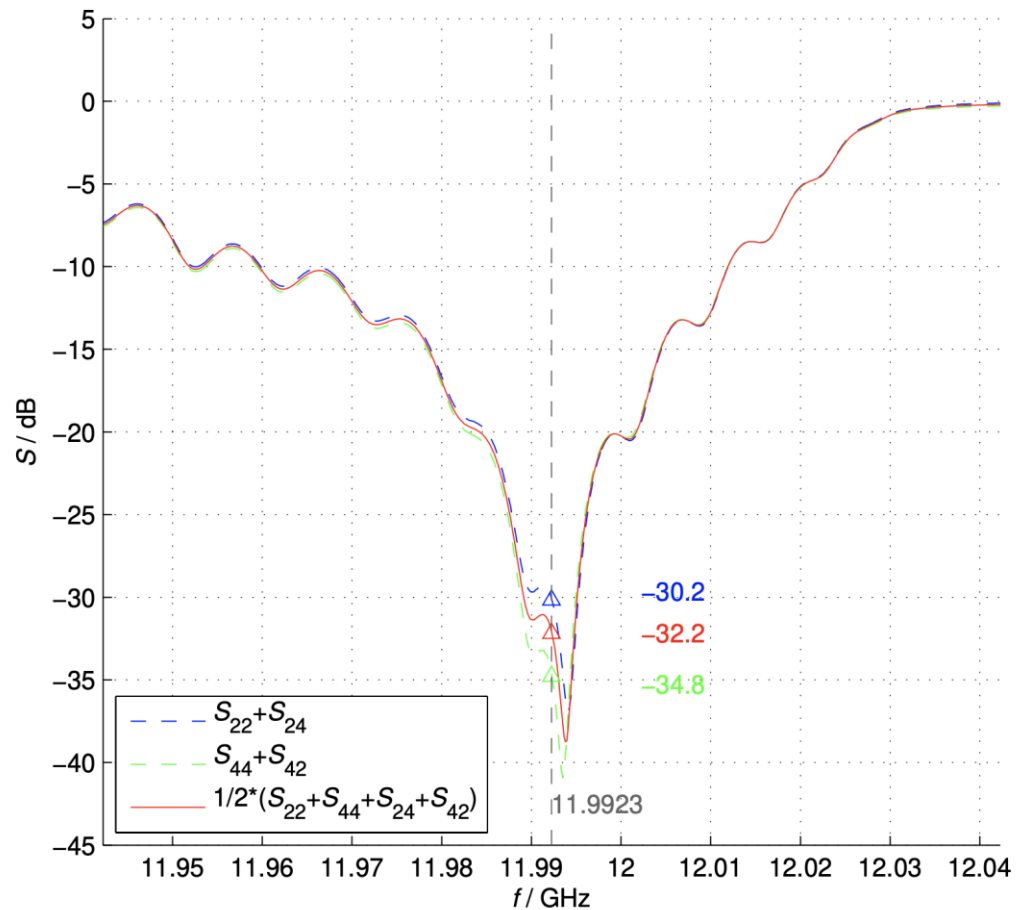
X-Box2 TD31 N3



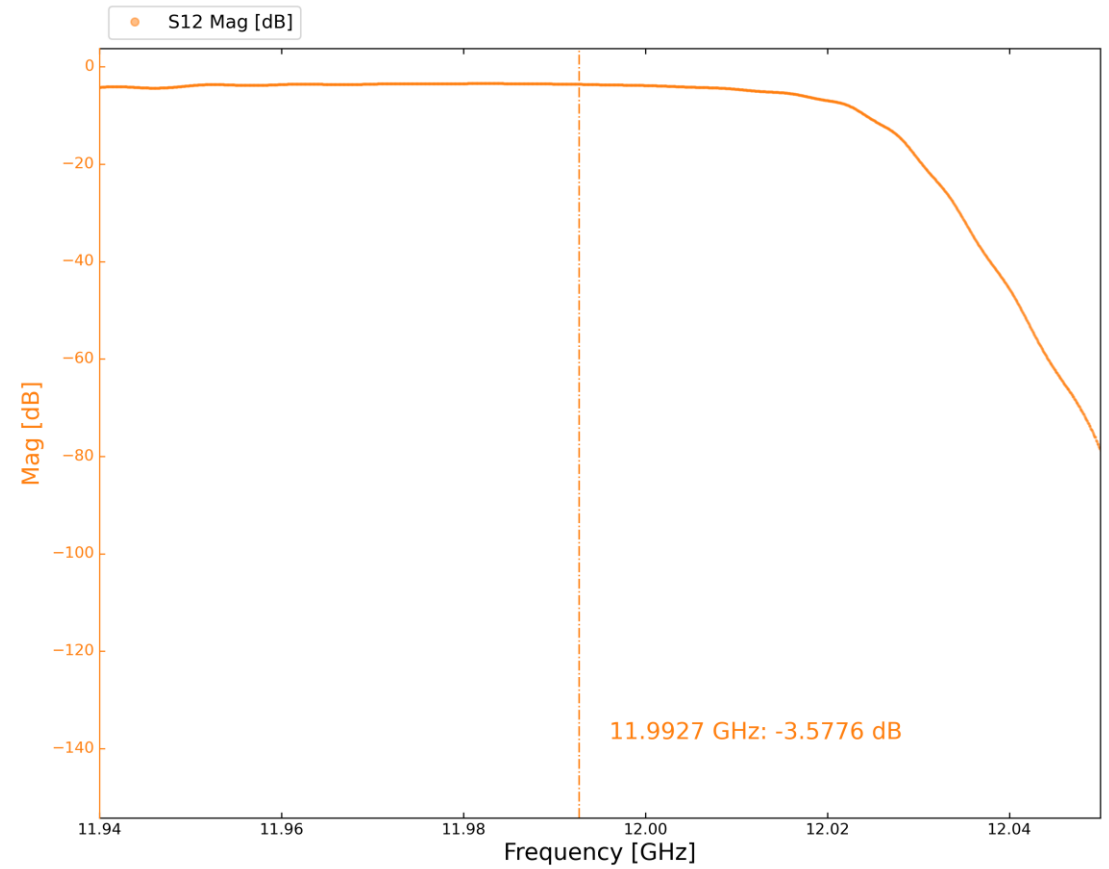
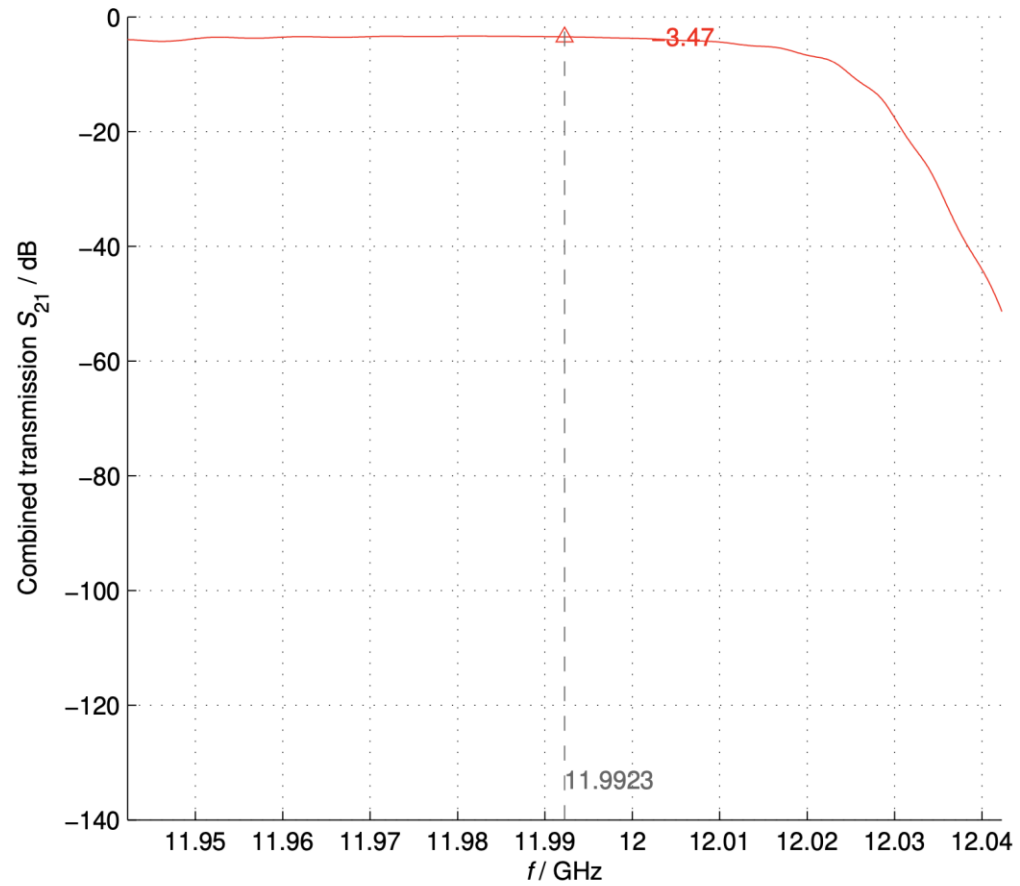
X-Box2 TD31 N3 – S11



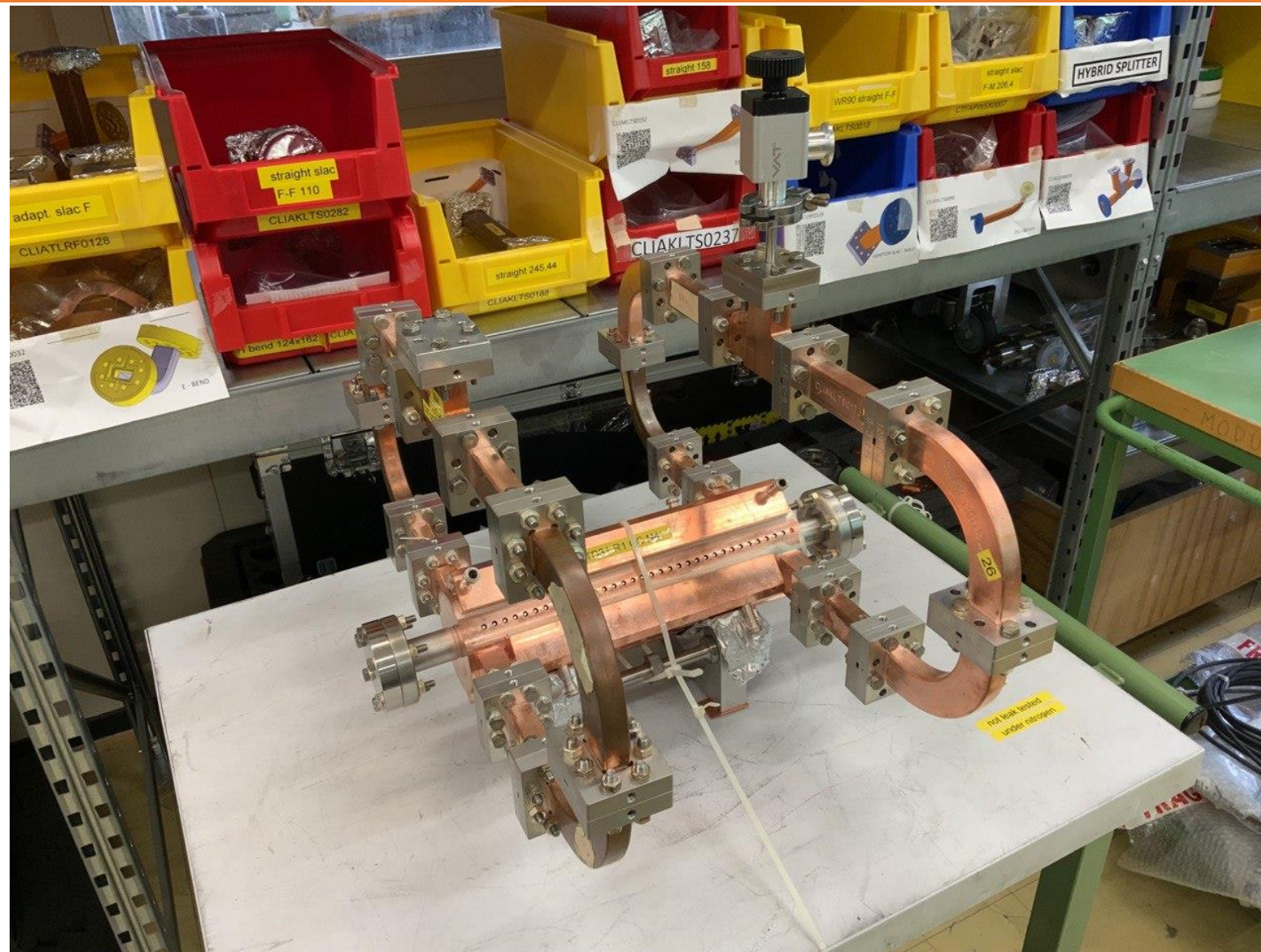
X-Box2 TD31 N3 – S22



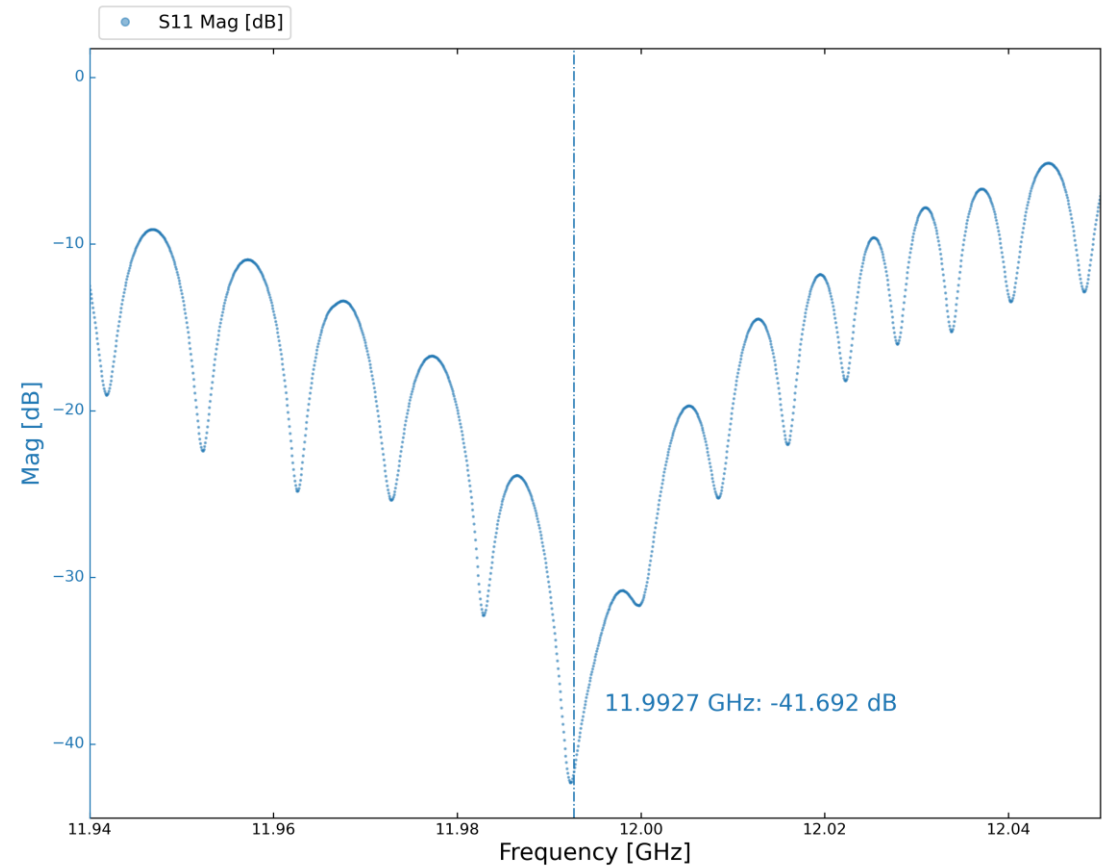
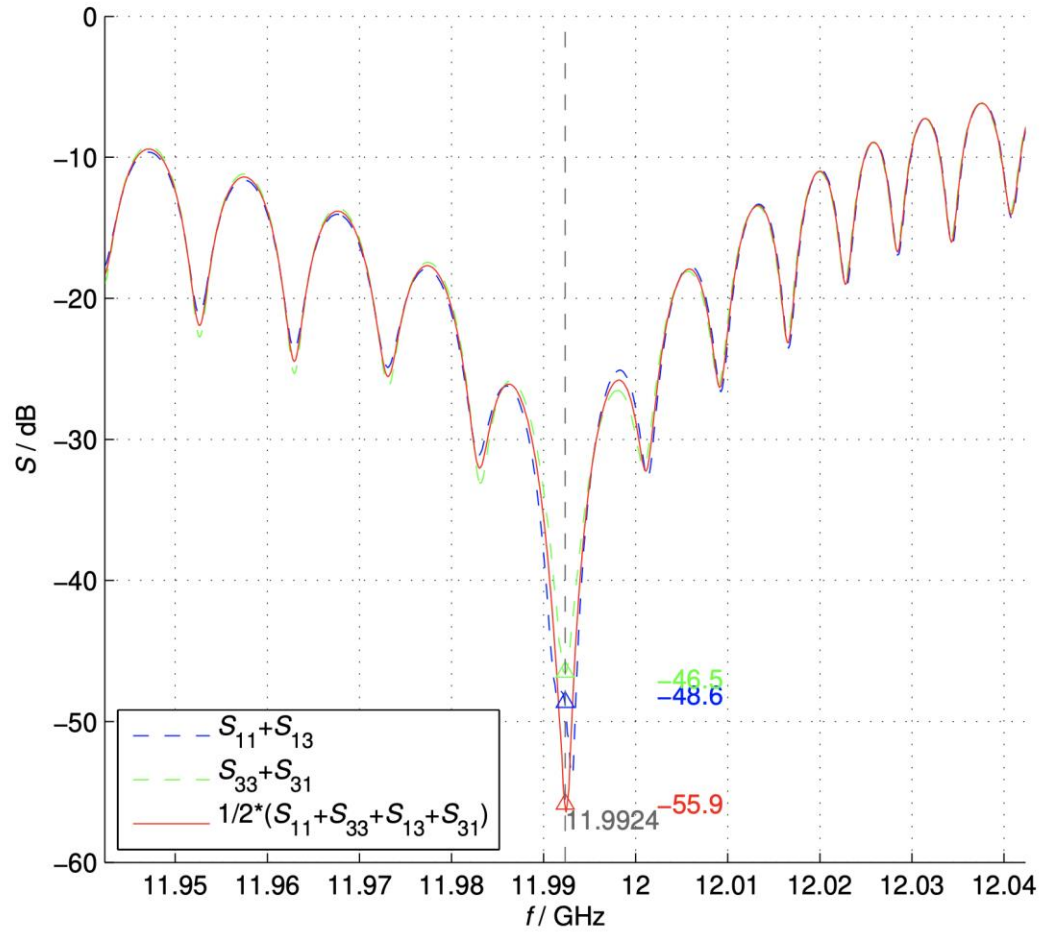
X-Box2 TD31 N3 – S12



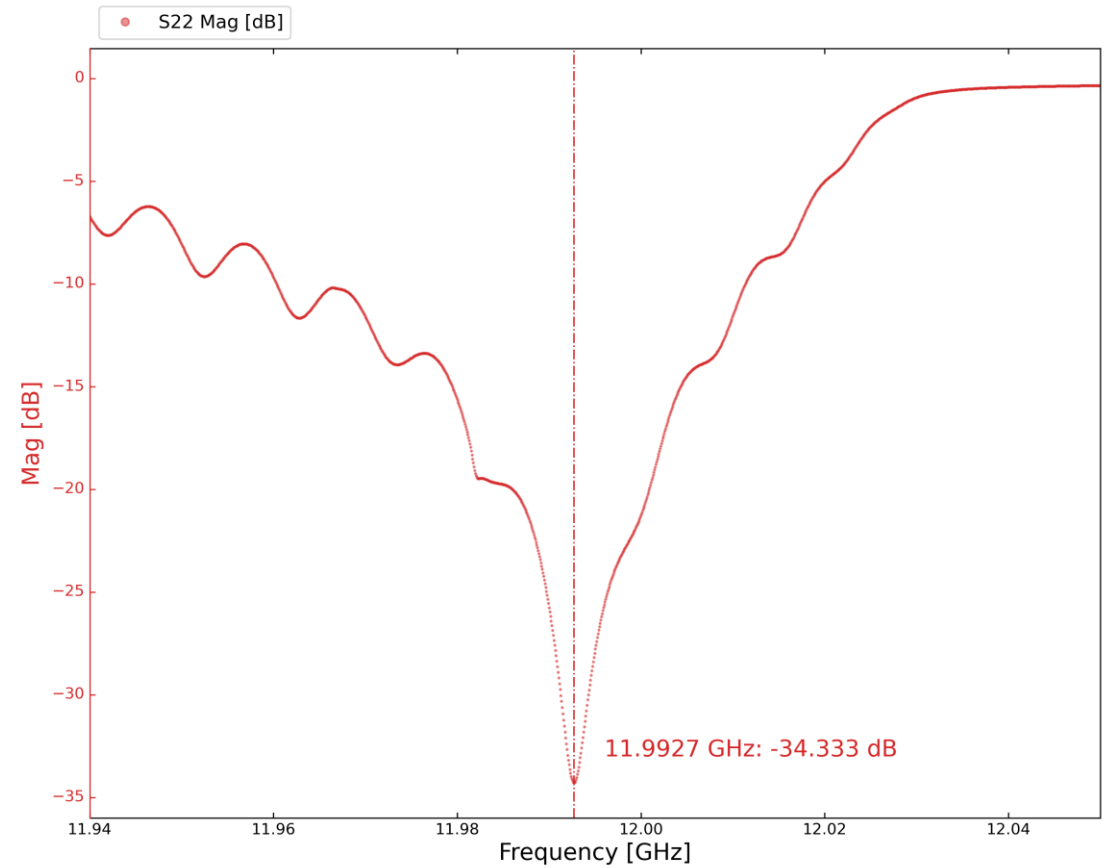
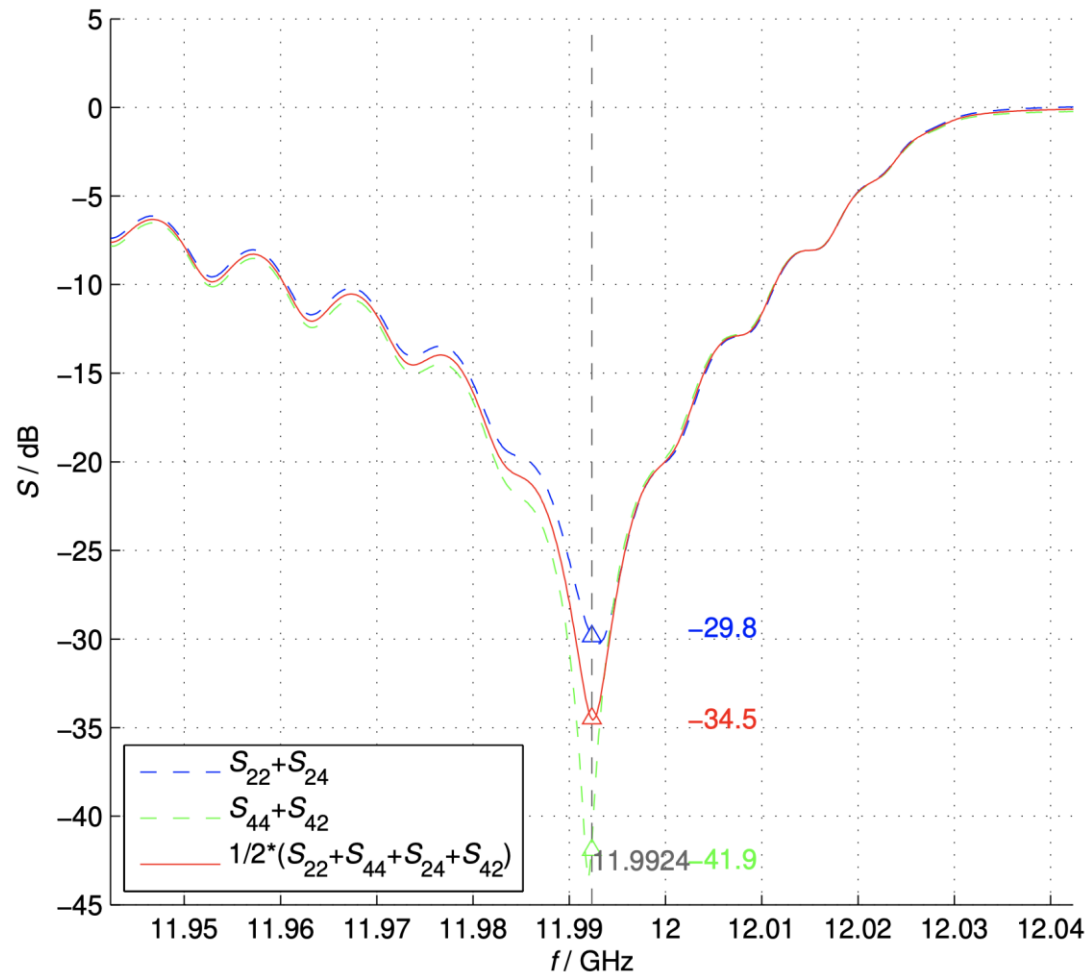
X-Box2 TD31 N4



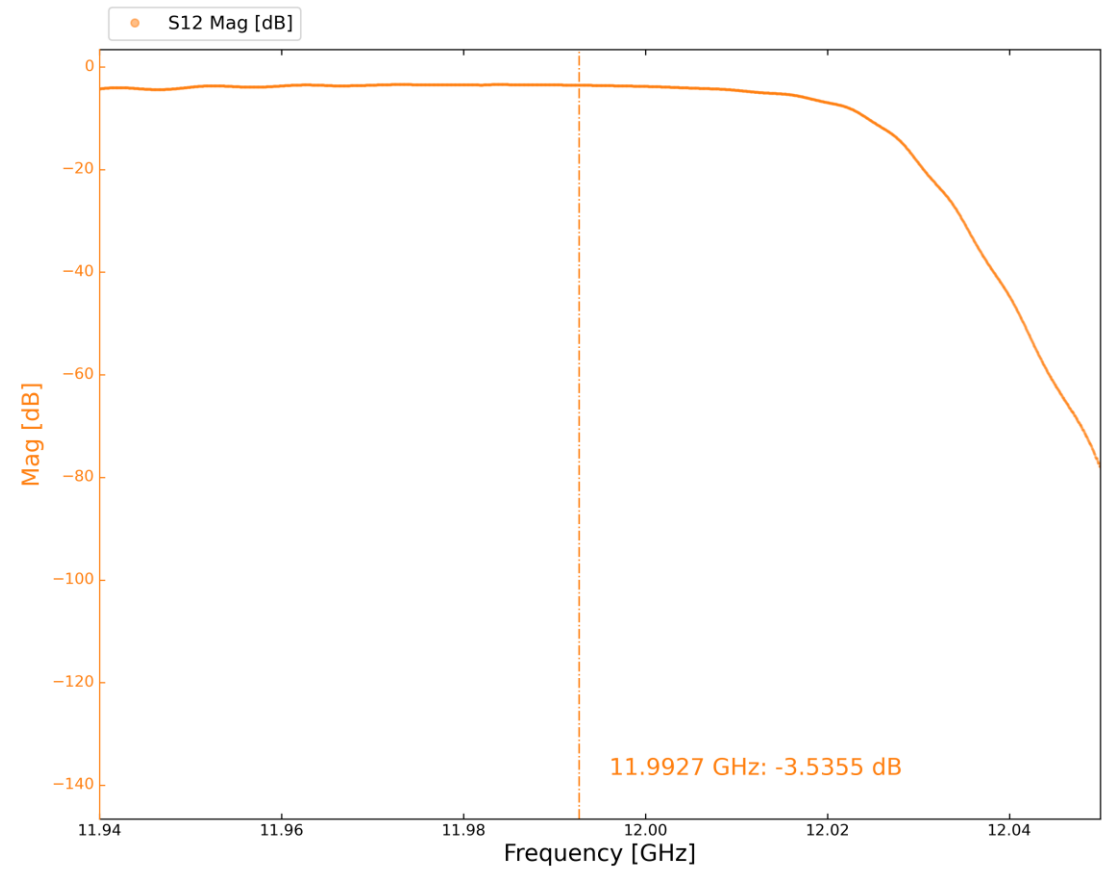
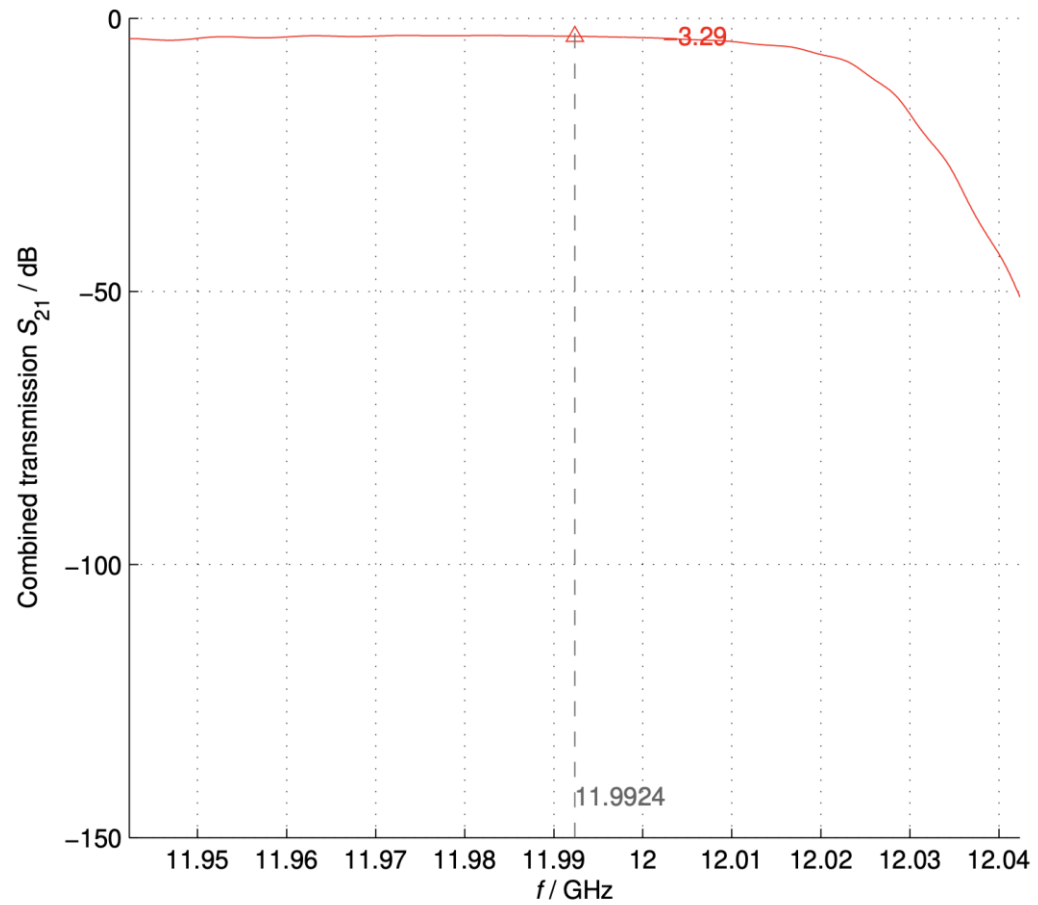
X-Box2 TD31 N4 – S11



X-Box2 TD31 N4 – S22

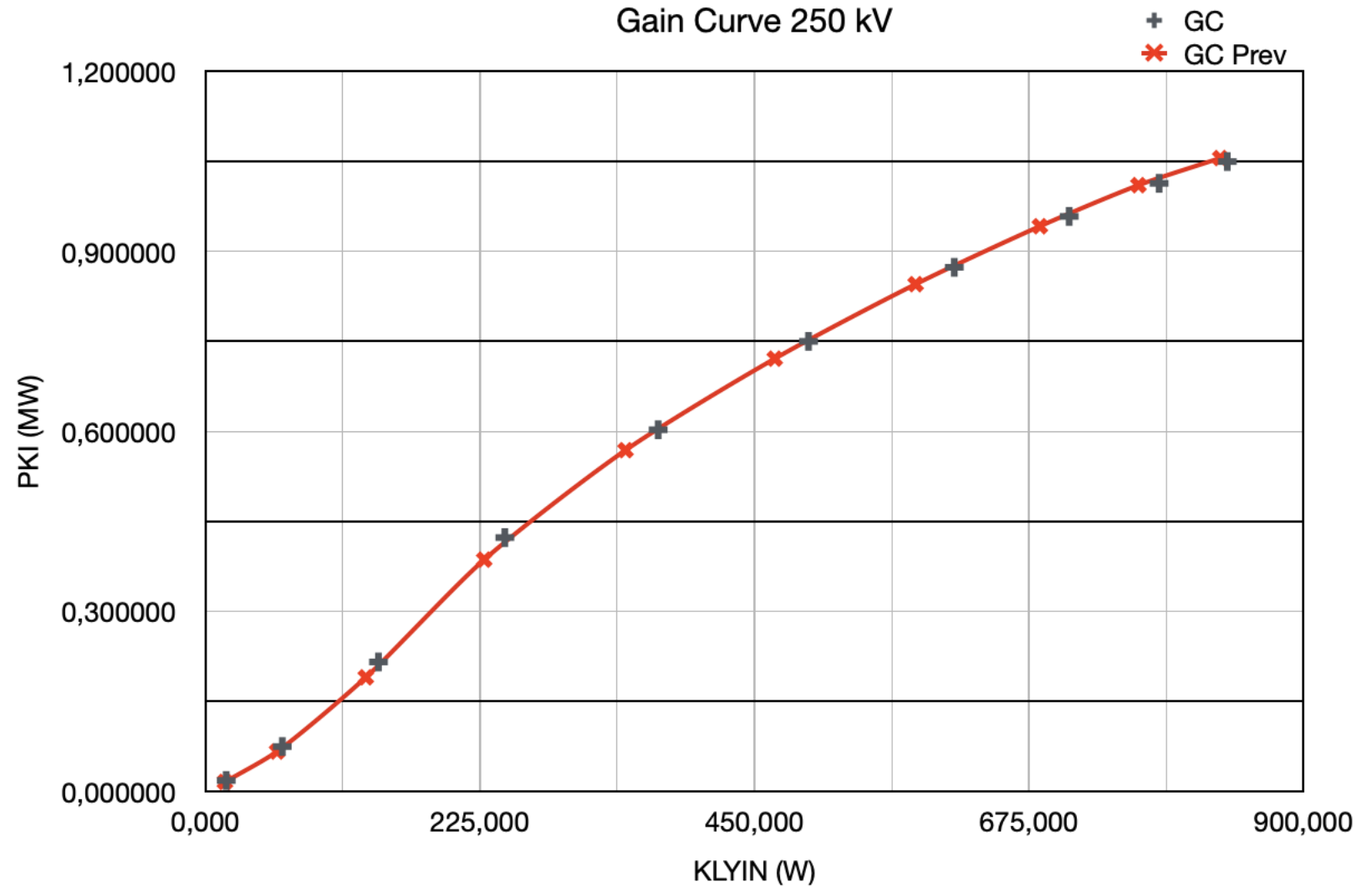


X-Box2 TD31 N4 – S12



X-Box2 Gain Curve 250 kV

Beam Current	253	kV
Beam Voltage	150,6	A
Rep Rate	5	Hz
Kly Pulse Length	1,4	us
RF Pulse Length	100	ns
HVPS	780	V
nPerveance	1183,43	
Fil V	16,80	V
Fil I	22,80	A
CC I	13,20	A
PKI Total Atte	-92,45	dB
KLYIN Total Atte	-50,33	dB



X-Box2 Gain Curve 300 kV

Beam Current	301,7	kV
Beam Voltage	191,6	A
Rep Rate	10	Hz
Kly Pulse Length	1,4	us
RF Pulse Length	100	ns
HVPS	922	V
nPerveance	1156,20	
Fil V	16,80	V
Fil I	22,80	A
CC I	13,20	A
PKI Total Atte	-92,45	dB
KLYIN Total Atte	-50,33	dB

