



GREECE@CERN

Reliable Partner – Innovation Supplier



cernprojects@prismael.com

In a nutshell



- Electronic Manufacturing Services
- IoT and Analytics
- ICT Solutions



ISO 9001:2015



ISO 27001:2013
Cert No: 08014045



Industrial Safety
Hellenic Ministry of National Defence

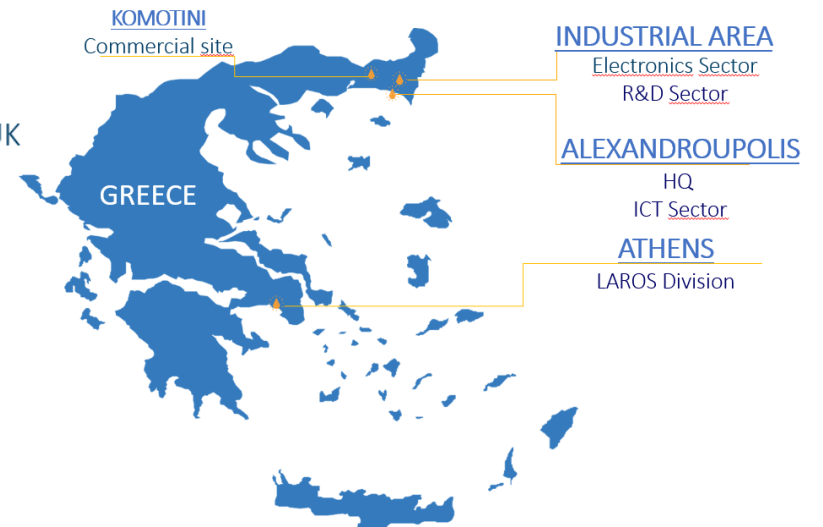


esa ECSS Training
Electronics Soldering

Locations



Prisma Electronics UK



> 100
employees



> 70%
higher
education



> 50
R&D
projects



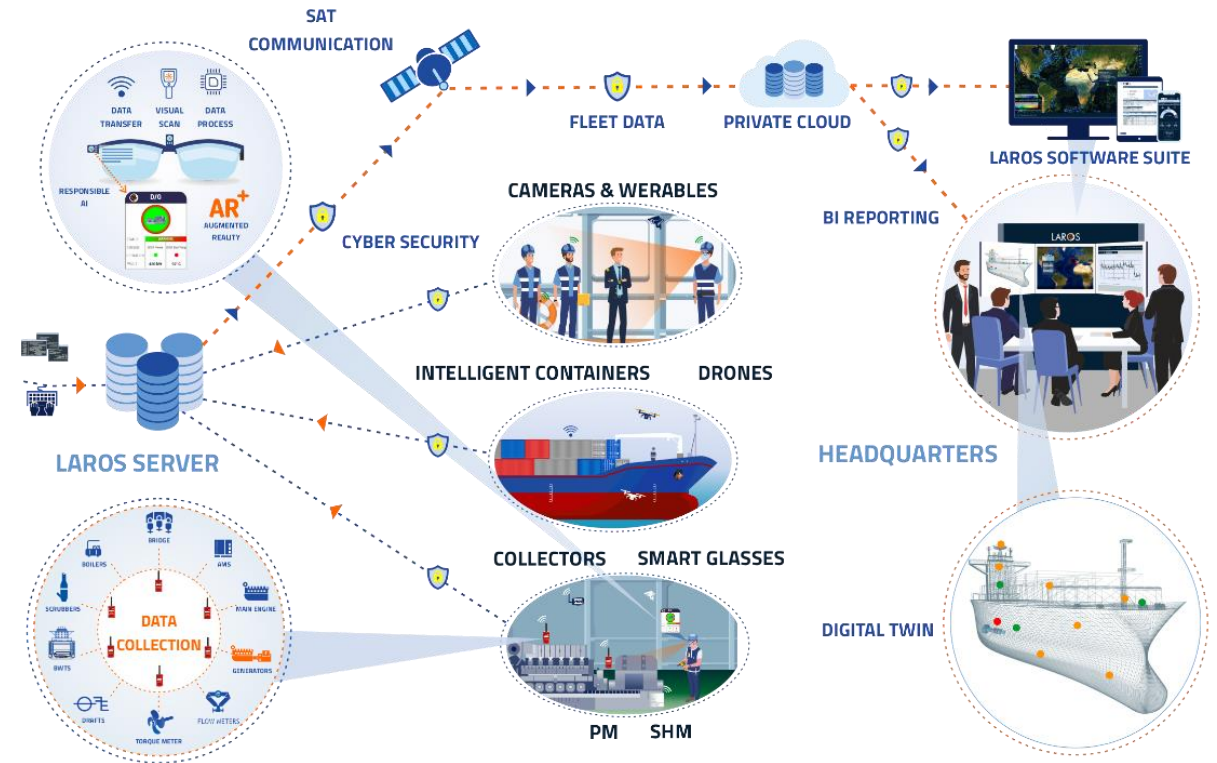
> 6,0 M€
turnover in 2022

EMS

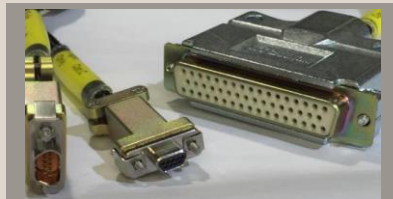
Reliable manufacturer



Technology made in Greece



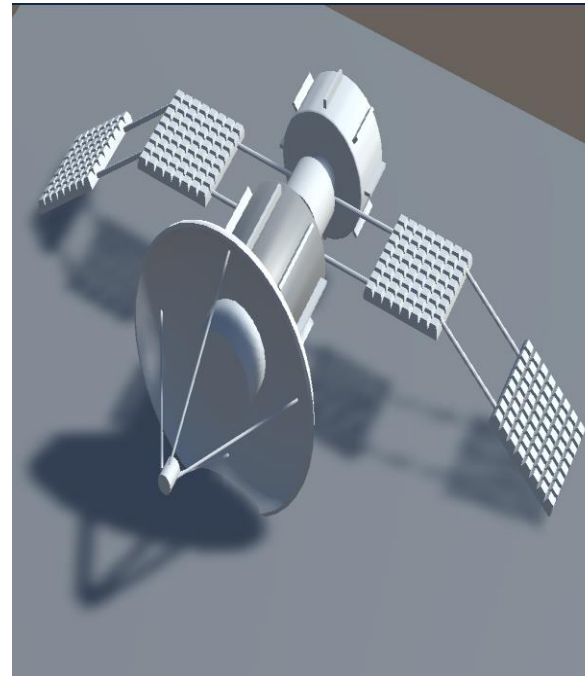
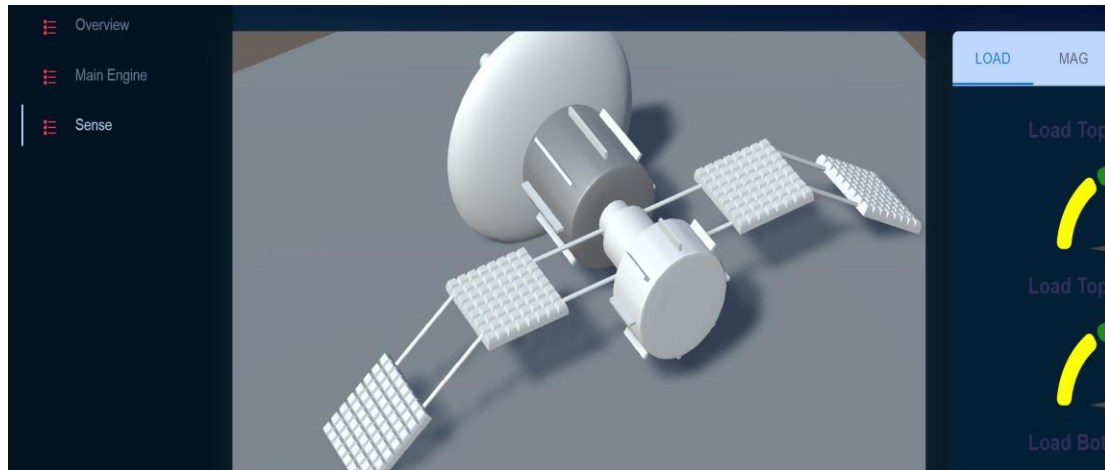
- Printed Circuit Board Assembly
- Device Integration
- Cables & Harnessing
- Optical Inspection



Visualizing using AI & Digital Twin

Integrating Data with Digital Twins

- Employings FMUs
- User defined AI Models
- Predicting & Preventing
- Visualizations
- Enhanced Characteristics
- Advancing Efficiencies



What we expect

- Working with CERN for Electronics, Power Electronics & Harnessing projects.
- Active, deep and continuous involvement onto ATLAS – CMS and other projects.
- Co-operations in EU Funded Project's (Horizon 2020, Marie Curie)
- PRISMA's Knowledge Management System into CERN's Museum.
- Energy and Environmental Monitoring & Analytics combined with Predictive Maintenance/Digital Twin/Augmented Reality



Thank You!

30 YEARS OF INNOVATION



The CMS Collaboration
presents



The CMS Gold Award
of the Year 2009

to

Prisma Electronics SA
Alexandroupolis, Greece

For their outstanding collaboration in producing the
front-end hybrid PCBs for the CMS Preshower detector

Dr. Daniel Green
Chairperson of the CMS Collaboration Board

CMS Industry Award 2009

