



TEMMA

PRECISION ENGINEERING AND MANUFACTURING

GREECE @ CERN

Dimitris Papazoglou
Project Manager

Our Company's Profile

Description

- Established in 1961 and specializes in the manufacturing of high – precision metal components

Location

City of Athens
4.000m²

Areas of expertise

	Civil Industry		Telecommunications
	Defense and Aerospace industry		Energy Production

Collaborations

- CERN
- THALES
- ESA
- INTRACOM DEFENSE
- ELVAL - HALCOR

Certification

- The company's quality management system is certified by TUV NORD since 1998 and currently operations in conformity with the Standard DIN EN ISO 9001:2015
- TEMMA also operates in accordance with SAE AS 9102, when required

OUR PEOPLE

**4 Administrative
officers**



**3 Engineers
and Designers**



**14 Production
Employees**



**2 Q.A.
Engineers**



Our people are our driving force

TEMMA's personnel, with its unparalleled skill and international experience, is the company's major factor of growth.

On our premises, our people constantly develop their expertise in order to respond to our industry's ever-increasing demands and face future challenges.

MECHANICAL EQUIPMENT

In order to meet its clients' strict standards for the manufacture of high precision Metal parts, the company has invested in the following technology.

TEMMA's modern and pioneering mechanical equipment includes:

Machining Centers CNC (3, 4 & 5 Axis)

Turning Centers CNC

Conventional Lathes

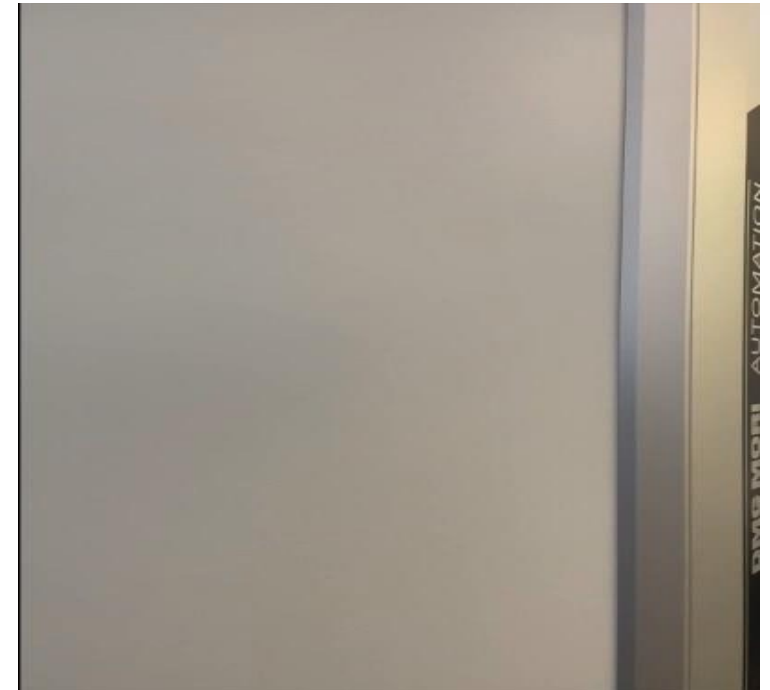
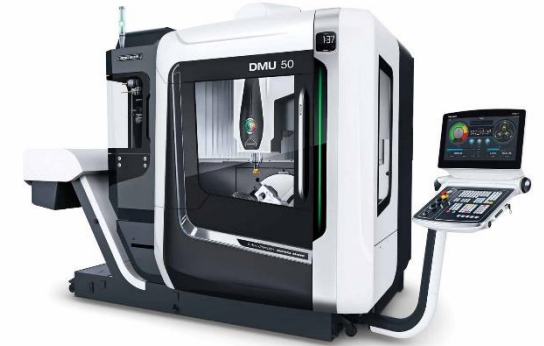
Conventional Machining Centers

Drilling/Cut etc

Grinding Machines

EDM

Tool Presetter



QUALITY

Quality is integrated in the philosophy of TEMMA as a primary objective, as we believe in achieving the **continuous satisfaction** of our customers' ever-increasing requirements.

For the first time in 1998, the company certified that the Quality Control System we had in place follows the ISO 9002:1994 standard. Following that, TEMMA upgraded to DIN EN ISO 9001:2008 and nowadays, TEMMA is awarded with **DIN EN ISO 9001:2015** of TUV NORD.

In order to achieve this:

A fully organized Quality Control department, equipped with high-end measuring instruments, is operating at our premises under the same philosophy.

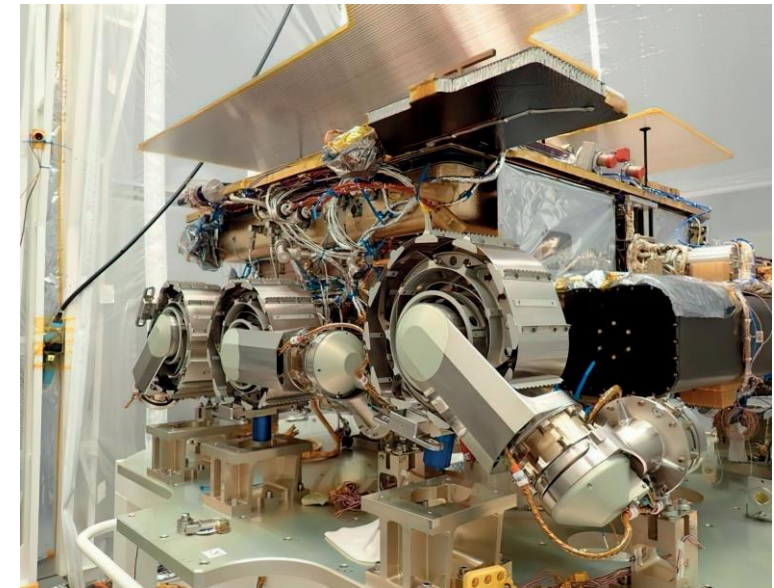
The Quality Control department's specialized personnel is thoroughly carrying out measurements and tests throughout the production process, from procurement of raw material to delivery of the final product. Our high-spec measuring instruments are calibrated in third-party metrology labs.



PROJECTS

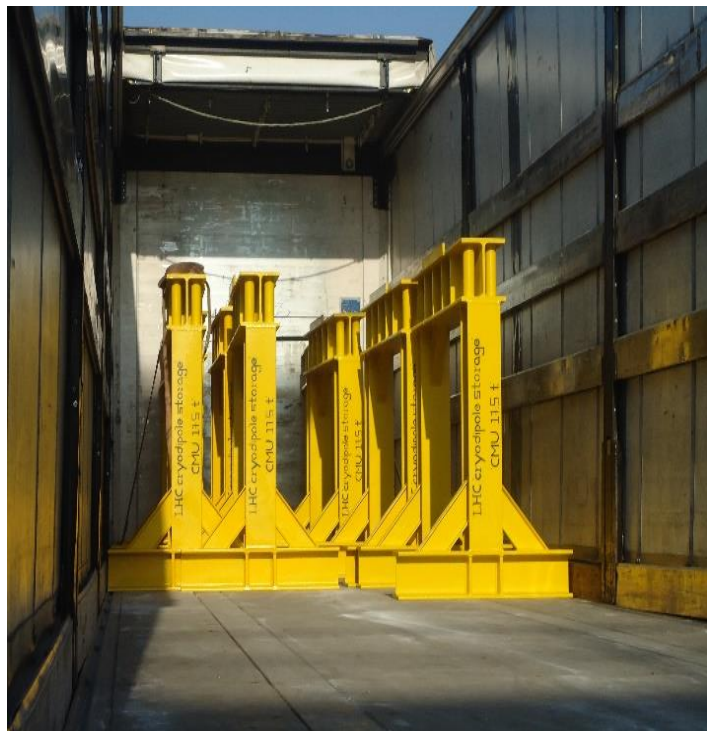
TEMMA has contributed to a variety of successful projects such as:

- Airbus Cargo Door Frame
- Chinook CH 47
- ExoMars 2018
- IRIS-T
- Leopard II
- LHC Support
- nEuron UCAV
- Patriot
- PzH 2000
- Rafale radar
- Sea Sparrow



CERN PROJECTS

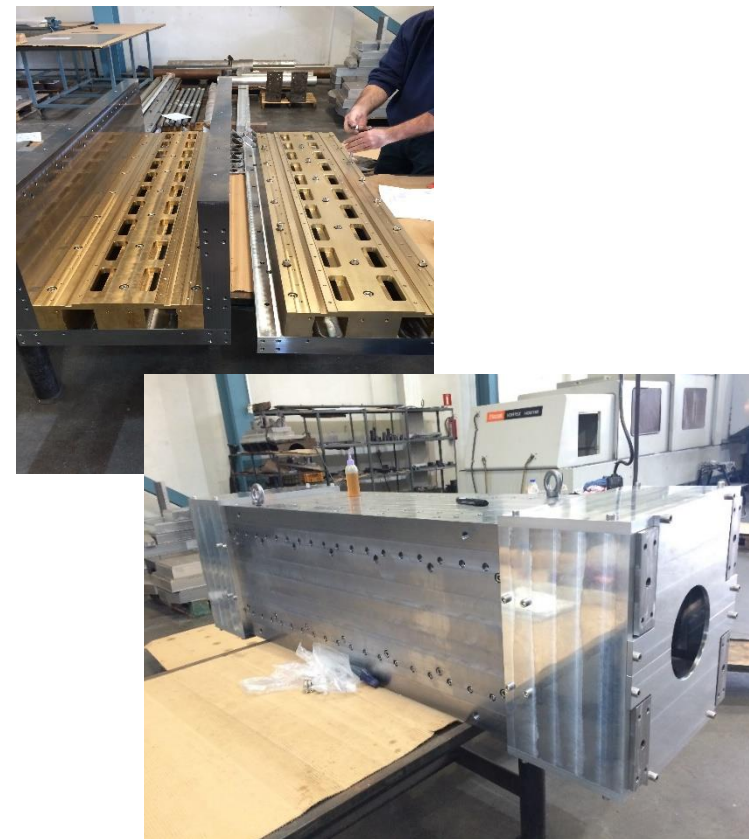
CRYODIPOLE STORAGE FRAME



ABSORBER BLOCKS



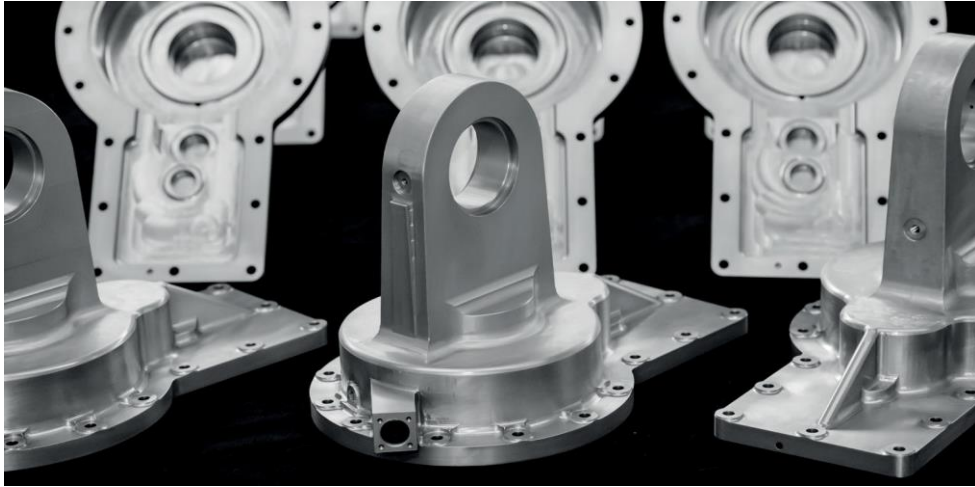
MAGNET ASSEMBLY

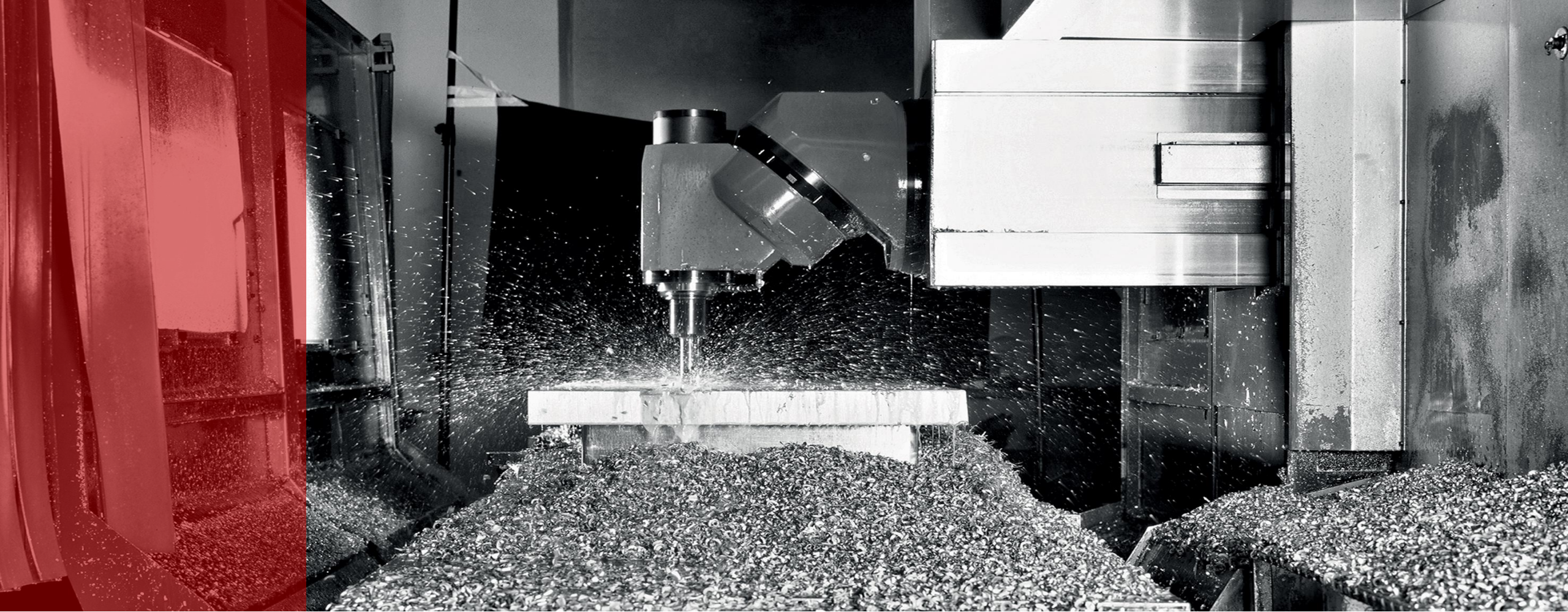


PARTNERS

Major partners of TEMMA are:

- CERN
- Intracom Defense Electronics
- RAYTHEON
- THALES
- ELVAL
- MYTILINEOS – METKA
- European Space Agency
- Hellenic Aerospace Industry
- Hellenic Shipyards
- BOEING





Thank you for your attention

Dimitris Papazoglou
Project Manager

