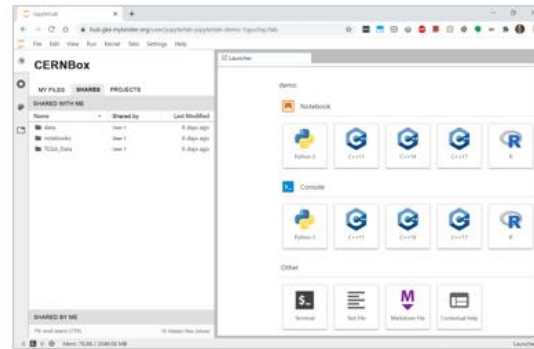
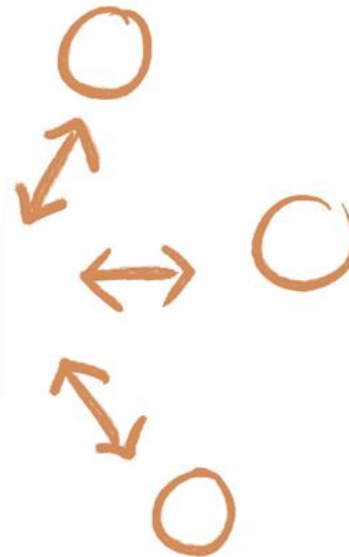


- # Collaboration on Jupyter notebooks in a sync-and-share environment
- # JupyterLab extension (**cs3api4lab**)
 - # Integration with ScienceMesh IOP (CS3 APIs)
 - # Sharing and collaboration features in JupyterLab
- # Unified shares interface (CS3 / OCM)
- # Collaborative workflows
 - # Locking mechanism
 - # Overwrite protection
 - # Merge support (planned)



jupyterlab

CS3 APIs



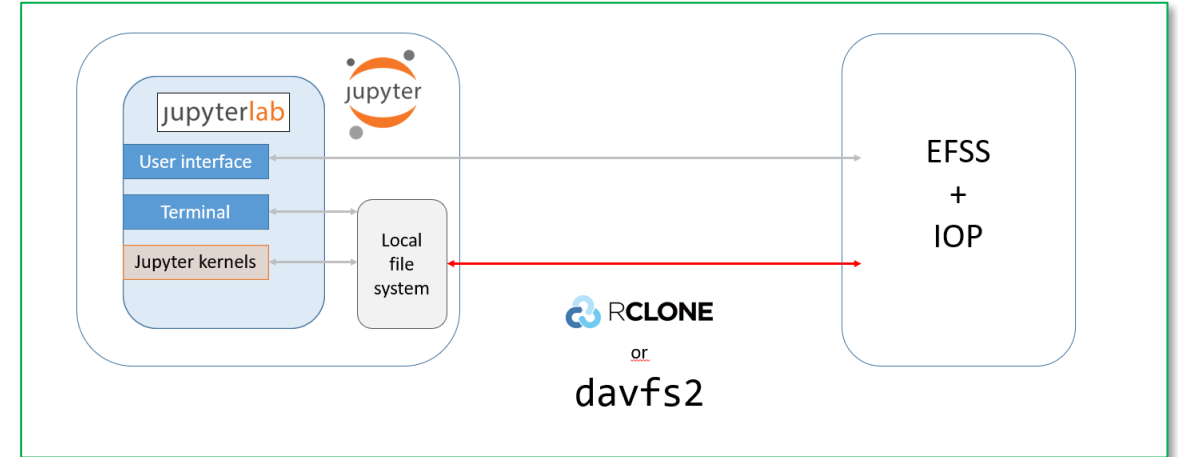
File system integration (backend)

Jupyter kernel – data access

- # local file system
- # EFSS file system

two alternative implementations:

- # Sync with Rclone
- # FUSE mount with davfs2



Interactive dashboard deployment

- # VaaS - Voilà as a Service
- # voilalibrary

