



HELLENIC REPUBLIC  
MINISTRY FOR DEVELOPMENT

**GSRI**

GENERAL SECRETARIAT FOR  
RESEARCH AND INNOVATION



# The General Secretariat for Research and Innovation - Funding Science and R&D in Greece

RECFA visit to Greece  
Open Session 10/11/2023



Maria Christoula (Ph.D)  
Director, International Cooperation Directorate





# Contents

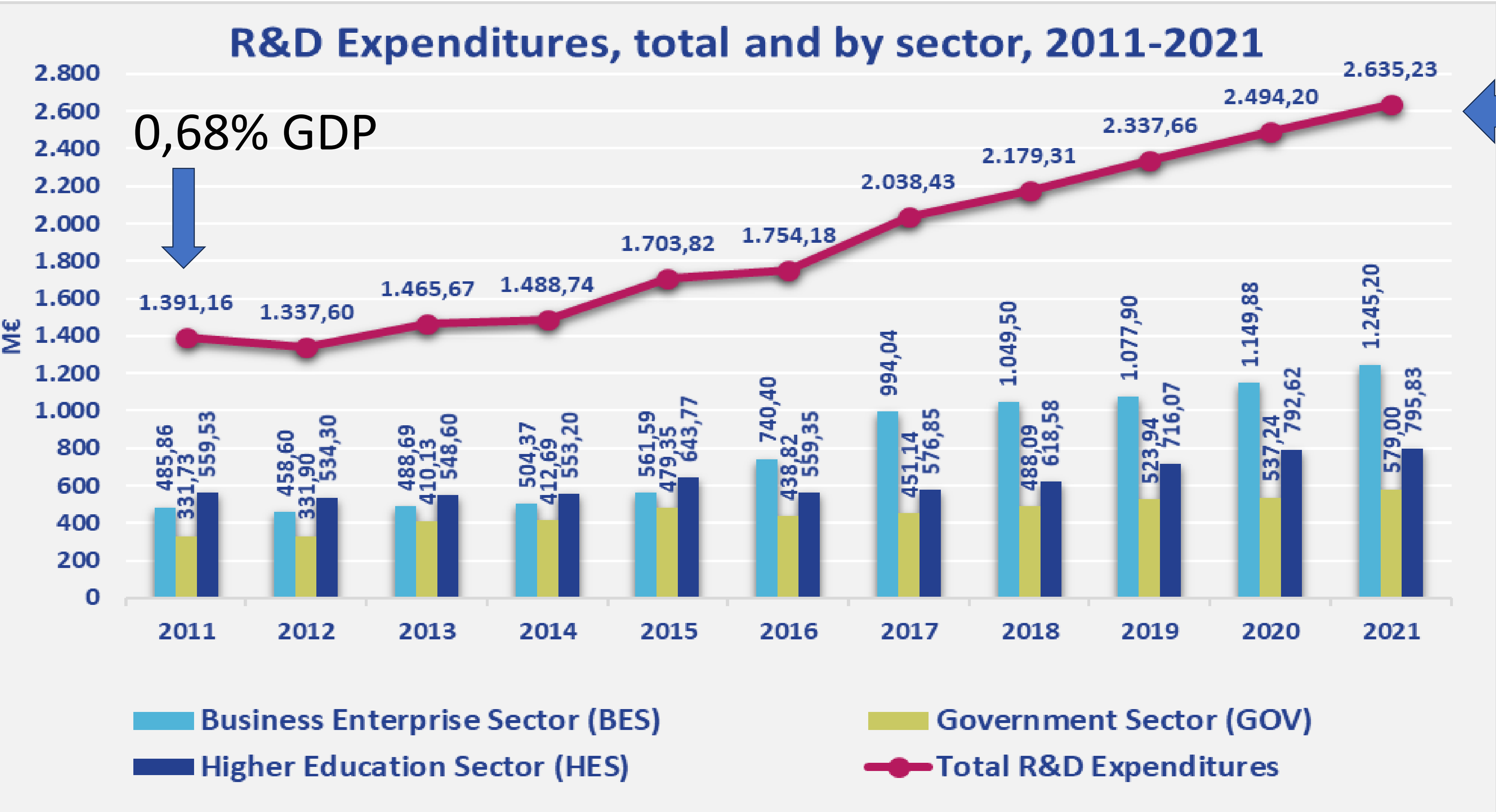
- 1 Country Performance in R&I
- 2 The General Secretariat for Research and Innovation (GSRI)
- 3 Research Centers and Technological Organizations supervised by the GSRI
- 4 National Strategy for Research, Technological Development and Innovation 2021-27
- 5 National Smart Specialization Strategy 2021-27
- 6 Hellenic Foundation for Research and Innovation - HFRI
- 7 Internationalization/ International S&T Cooperation
- 8 Funding Sources





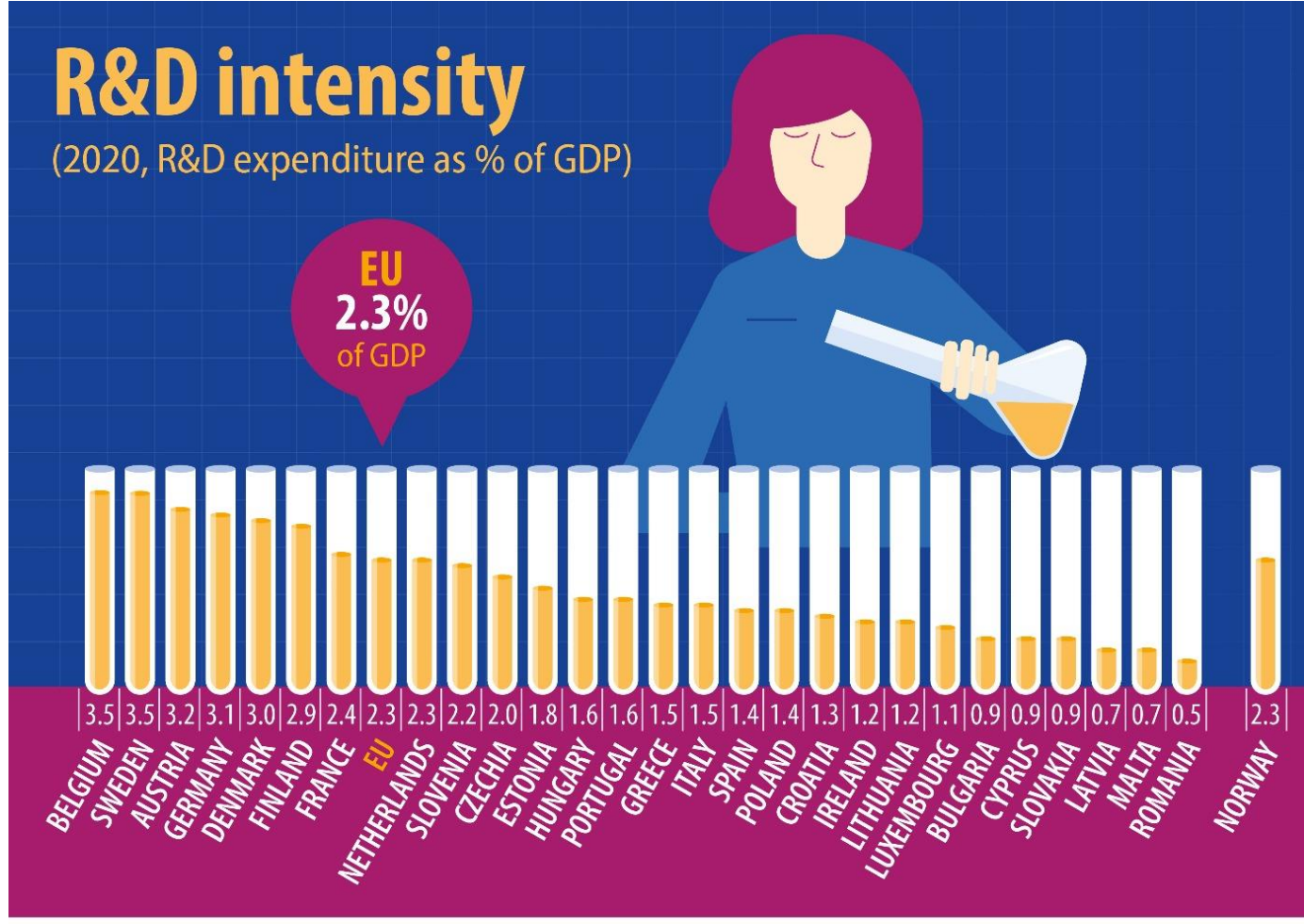
# Country Performance in R&I

# R&D Intensity (the percentage of R&D expenditure on GDP) is 1.46% in 2021



1,46% GDP

R&D Intensity in Greece remains below the EU average



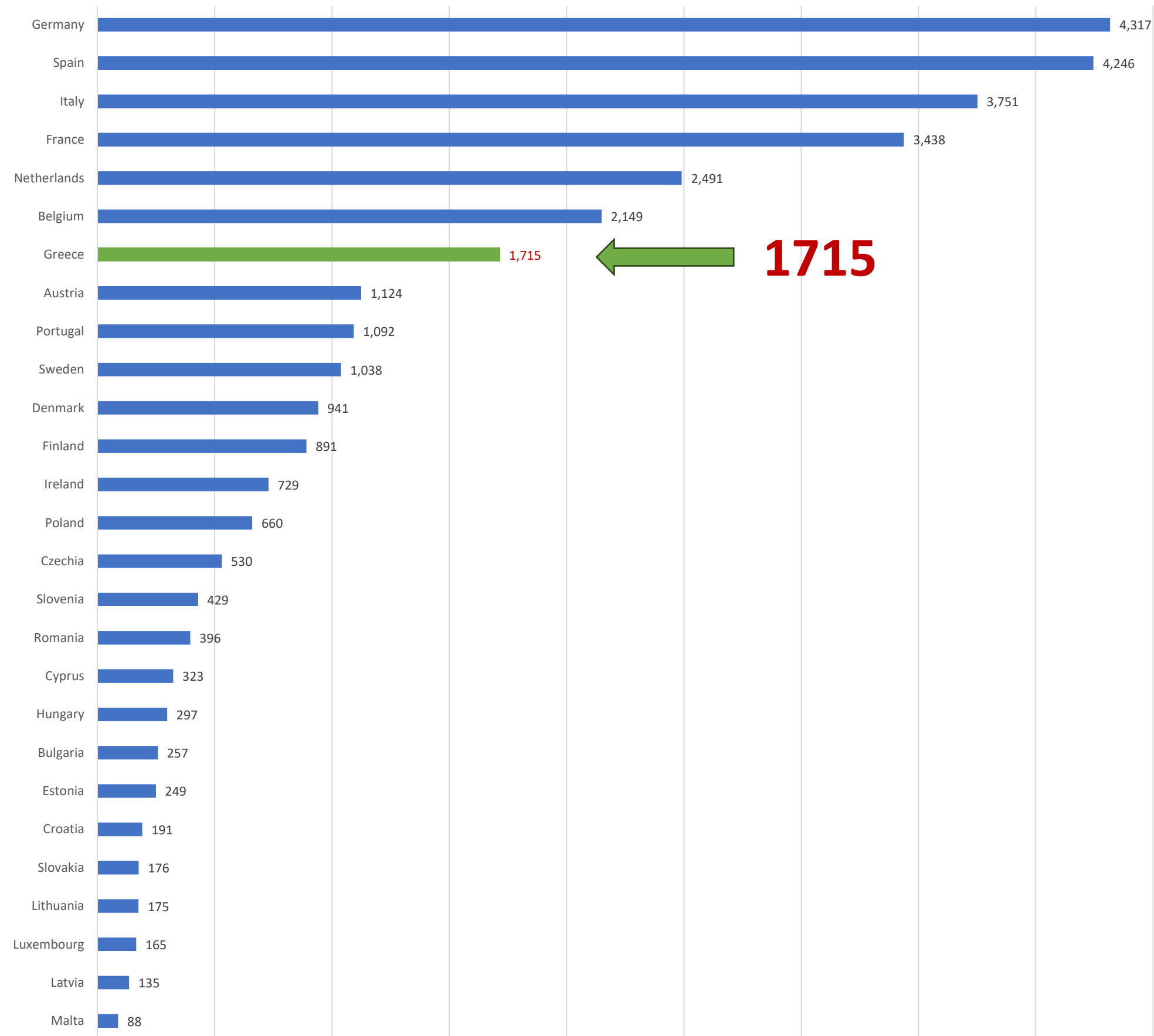
ec.europa.eu/eurostat



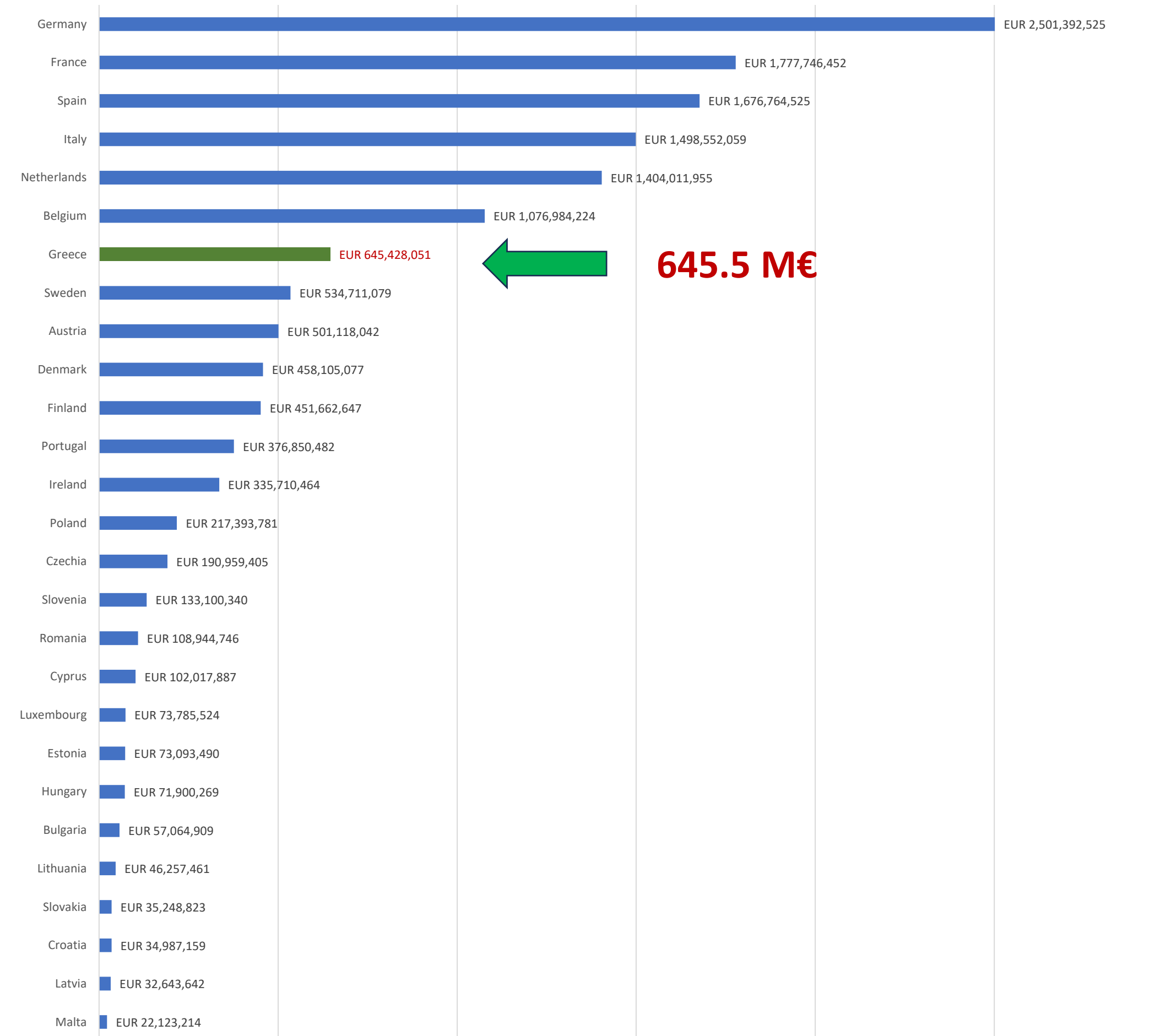
# Horizon – Europe (2021-2027)

## Greek participation and ranking on the basis of n° of participations and funding

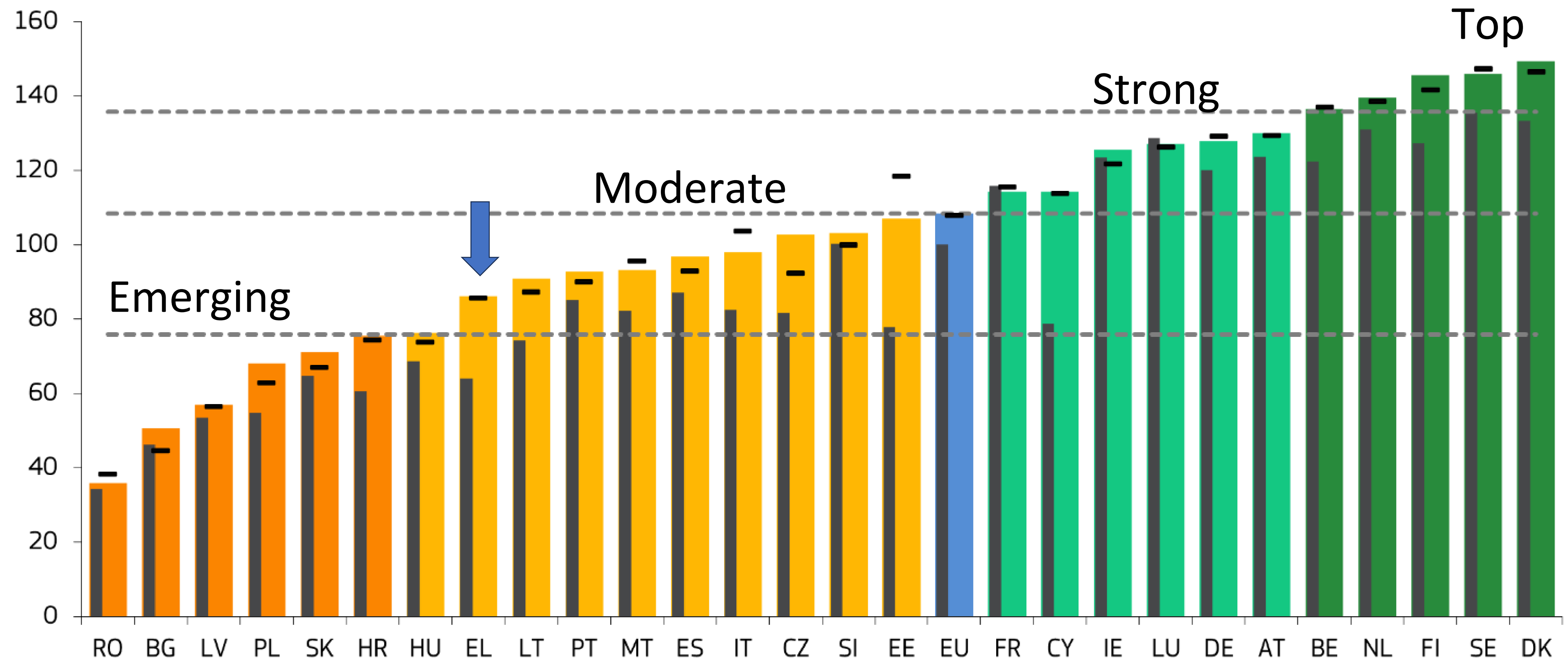
Number of participations



Funding (€)



# Performance of EU Member States' innovation systems: Greece is a moderate innovator

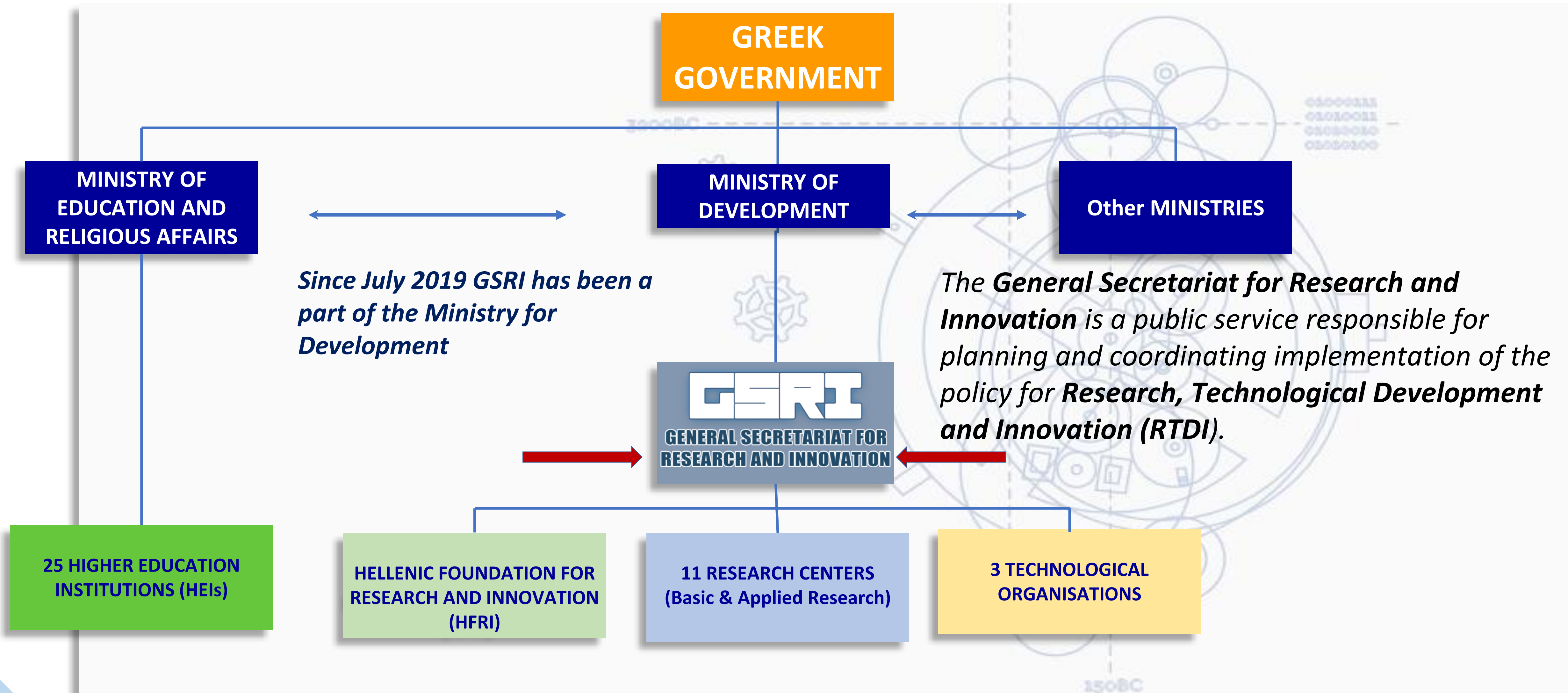




# The General Secretariat for Research and Innovation (GSRI)

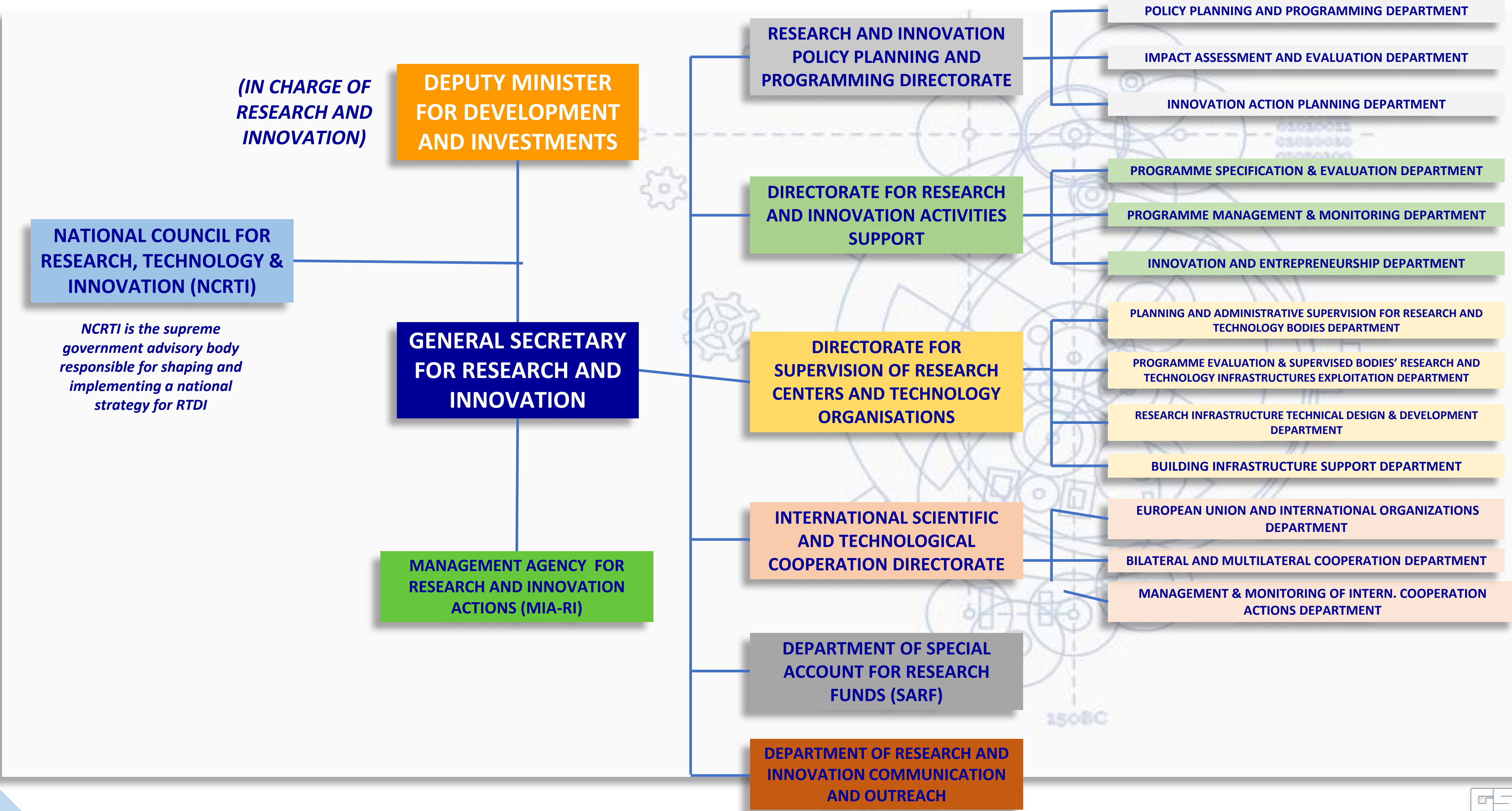


# Ministry of Development and Investments / General Secretariat for Research & Innovation





# Organization Chart of the General Secretariat for Research & Innovation





# The Mission of the General Secretariat for Research and Innovation

- ✓ Design, implementation, monitoring and evaluation of the **National Strategy for Research and Innovation**
- ✓ Launching and funding of **research and innovation competitive programmes** for economic growth and social prosperity
- ✓ **Supervision** and funding of **11 Research Centers** and **3 Technological Organizations**
- ✓ **Representation to the European Union, OECD** and International Research Organizations (CERN, EMBL etc.)
- ✓ **Promotion of public awareness** on Science, Research and Technology





The background features a large, stylized graphic composed of several overlapping, semi-transparent rings. The rings are primarily light blue and light green, with some darker shades of blue and green interspersed, creating a sense of depth and movement. The rings are arranged in a circular pattern, with some overlapping others, and they appear to be slightly offset from each other, giving the impression of a dynamic, flowing structure.

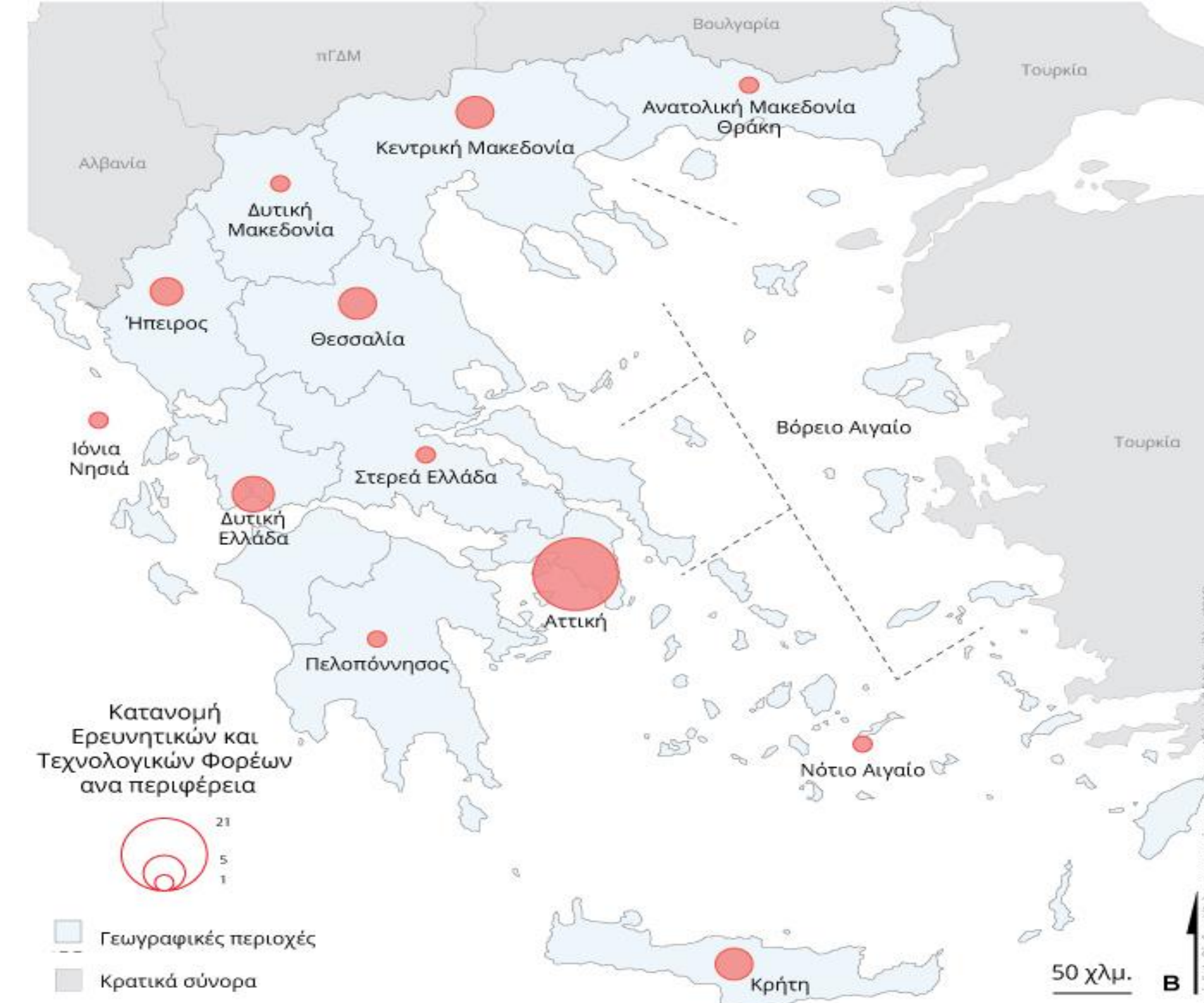
# Research and Technological Bodies supervised by GSRI

# Research & Technological Organizations

## Research Centers : 11

- 
**ATHENA** – Research and Innovation Center in Information, Communication and Knowledge Technologies
- 
**NOA** – National Observatory of Athens
- 
**NHRF** – National Hellenic Research Foundation
- 
**CERTH** – Center for Research & Technology Hellas
- 
**NSCR 'D'** – National Center for Scientific Research DEMOKRITOS”
- 
**NCSR** – National Centre for Social Research
- 
**HPI** – Hellenic Pasteur Institute
- 
**HCMR** – Hellenic Center for Marine Research
- 
**BSRC** – Biomedical Sciences Research Center “ALEXANDER FLEMING”
- 
**FORTH** – Foundation for Research and Technology – Hellas
- 
**BRFAA** – Biomedical Research Foundation Academy of Athens

**underlined: multisectoral**



*Geographical distribution of research centers per region*

## Technological organizations : 3

- 
**EEAE** – Greek Atomic Energy Commission
- 
**PSP** - Patras Science Park
- 
**NOESIS** – Science Center and Museum of Technology



**National Strategy  
for Research,  
Technological  
Development and  
Innovation  
2021-2027**





# The National Strategy for Research Technological Development & Innovation

- ✓ It is defined in article 4 of Law 4310/2014
- ✓ Refers to a seven-year period (2021-27)
- ✓ Responsible Body: GSRI
- ✓ For the formulation of NSRTDI, GSRI undertakes a broad consultation and collaboration with representatives of the scientific community, the business sector, societal and economic partners

## Dimensions of NSRTDI: Green, Digital, Inclusive

**NSRTDI**

**National Smart  
Specialization Strategy (S3)  
2021-27**

**Curiosity  
driven  
Research**

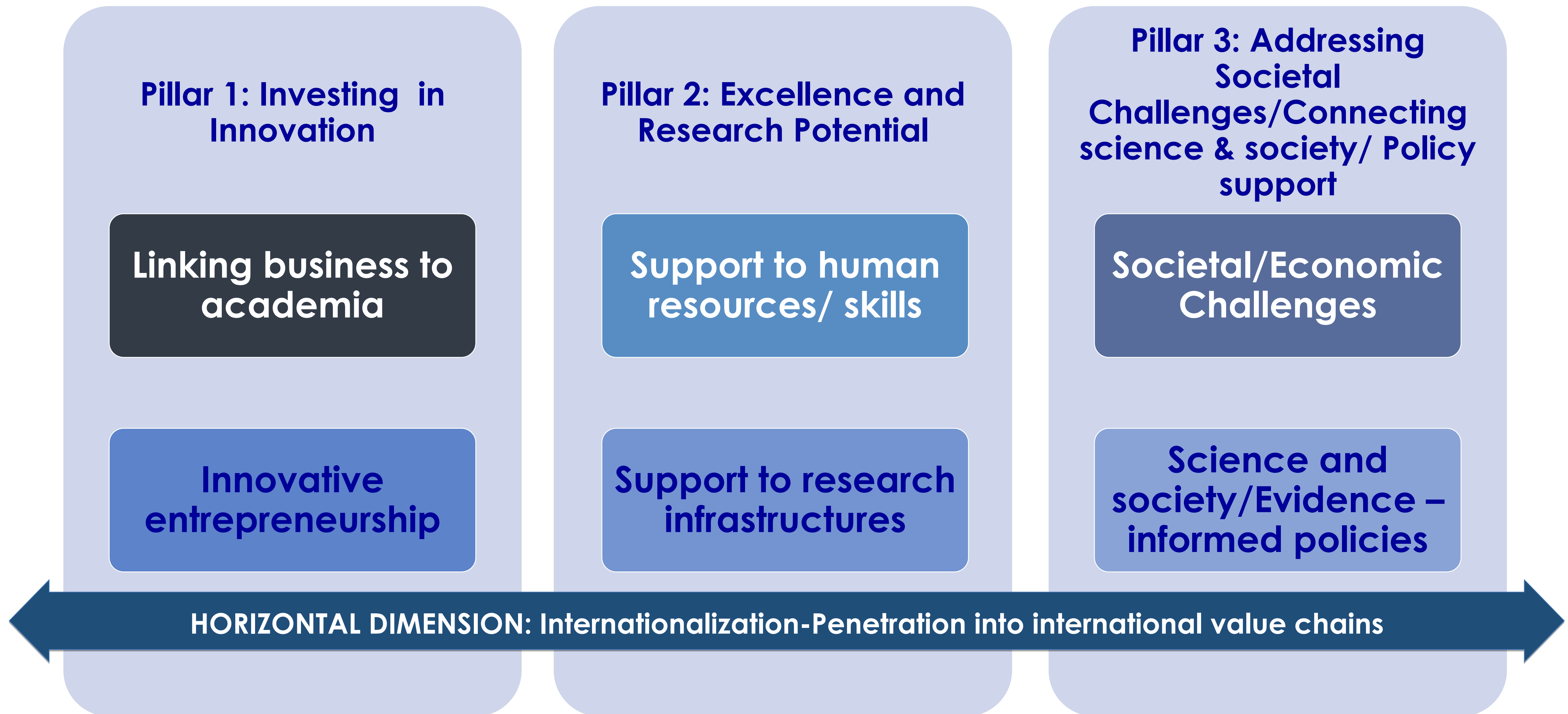
Structural Funds  
Recovery and Resilience  
Fund (RRF)  
Just Transition Fund (JTF)

Flagship Initiatives,  
Research Bodies, Big  
Research Infrastructures

Institutional Interventions  
(incentives, etc.)  
International  
Organisations  
ERA (PRIMA, European  
Partnerships)

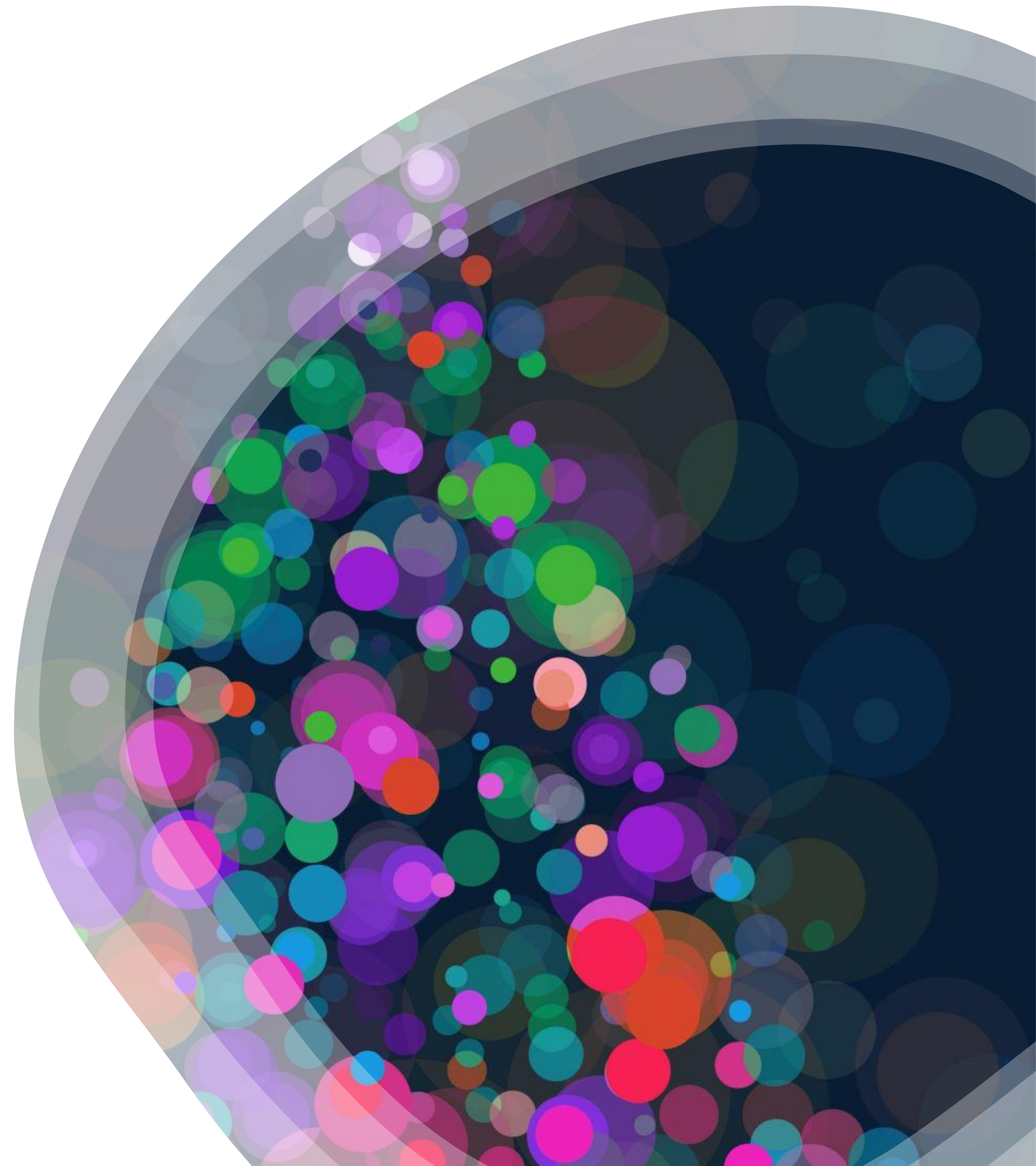


# NSRTDI design for the programming period 2021 – 2027





National Smart  
Specialization Strategy  
2021-27





# Smart Specialization Strategy 2021-27: The Greek Innovation Journey Green, Digital, Inclusive

---

- ***Strategic Objectives***
- Production of New Knowledge
- Creating value from Knowledge
- Technological Transformation of the Greek Productive Sector – Innovation adoption
- Internationalization – Integration into Global Value Chains





# Intervention Areas

---

- ✓ Human Resources (business and academia)/ Skills
- ✓ Research Infrastructures
- ✓ Innovation support services and facilities
- ✓ Business and Academia Co-operation and Co-creation
- ✓ Digital Transformation
- ✓ Regulatory Framework – Tax incentives
- ✓ Science and Society





# Thematic Priorities 2021- 2027 Programming Period

---

Digital Technologies

Bio-Sciences, Health and Pharmaceuticals

Environment and Circular Economy

Sustainable Energy

Transport and Logistics

Agro-food Value Chain

Tourism, Culture and Creative Industries





**11 Competence Centers**  
have been established: **Public-private legal entities offering specialized innovation and technology transfer services in firms (30M€)**

**Objectives:**

Boost innovative entrepreneurship, sharing of knowledge and expertise, use of common facilities and equipment, networking

Transfer of state-of-the-art technology in the production processes of business firms

Training/ upskilling/ reskilling of business firms employees in new technologies (especially in industry-4 domains)





# Technology Transfer Offices in Universities and Public Research Centers for:

- Pitching of research results with potential for commercialization,
- Supporting licensing, patenting, spin off creation etc.
- 17 new TTOs have been established and 8 networks of existing TTOs (**15 participating organizations**) are supported (**9M€**)





# «Research – Create - Innovate» 2014-2020:

**1.123** research projects,  
**602,35 m€** public funding

New «Research - Innovation»  
2021-27: **300 m €**





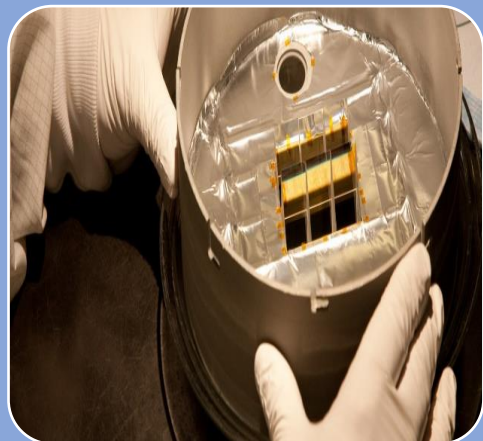
# Research Infrastructures



**Multiannual Budgeting Plan of National Research Infrastructures 2014-20 (28 RIs)**



**New Call for RIs of 100 m € (2-steps procedure)**



**Collaboration with the European Policy Support Facility to implement recommendations for internationalization, digitalization, adoption of Open Science –FAIR- principles**



**Expansion-Upgrade of Infrastructures of Research Centers (R.R.F)**



# Human Resources



**Reverse Brain Drain, Skills**



**Flagship Initiatives & Networks (Personalized Medicine, Climate Change, Food value chains: wine, olive oil, honey etc.)**



**Incentives for trans-sectoral mobility of researchers**



**HFRI: Support to research excellence and basic research**



# HFRI's Strategic Scope, Scientific Areas and Funding Schemes



**H.F.R.I.**  
Hellenic Foundation for  
Research & Innovation

The Hellenic Foundation for Research and Innovation was funded in 2016 to support unrestricted basic research without thematic or geographical exclusions, but with the sole criterion of scientific quality and excellence.

**S.A.1: Physical Sciences**

**S.A.2: Engineering Sciences & Technology**

**S.A.3: Life Sciences**

**S.A.4: Agricultural Sciences – Food Sciences & Technology**

**S.A.5: Mathematics & information Sciences**

**S.A.6: Social Sciences**

**S.A.7: Humanities & Arts**

**S.A.8: Environment & Energy**

**S.A.9: Management & Economics of Innovation**

➤ **Scholarships for PhD Candidates**

➤ **Funding of Research Projects for Postdoctoral Researchers**

➤ **Funding of Research Projects for Faculty Members and  
Researchers**

➤ **Procurement of High-Value Research Equipment**

➤ **Science and Society & Emblematic Actions**

➤ **Other Actions /ERC seal of excellence**

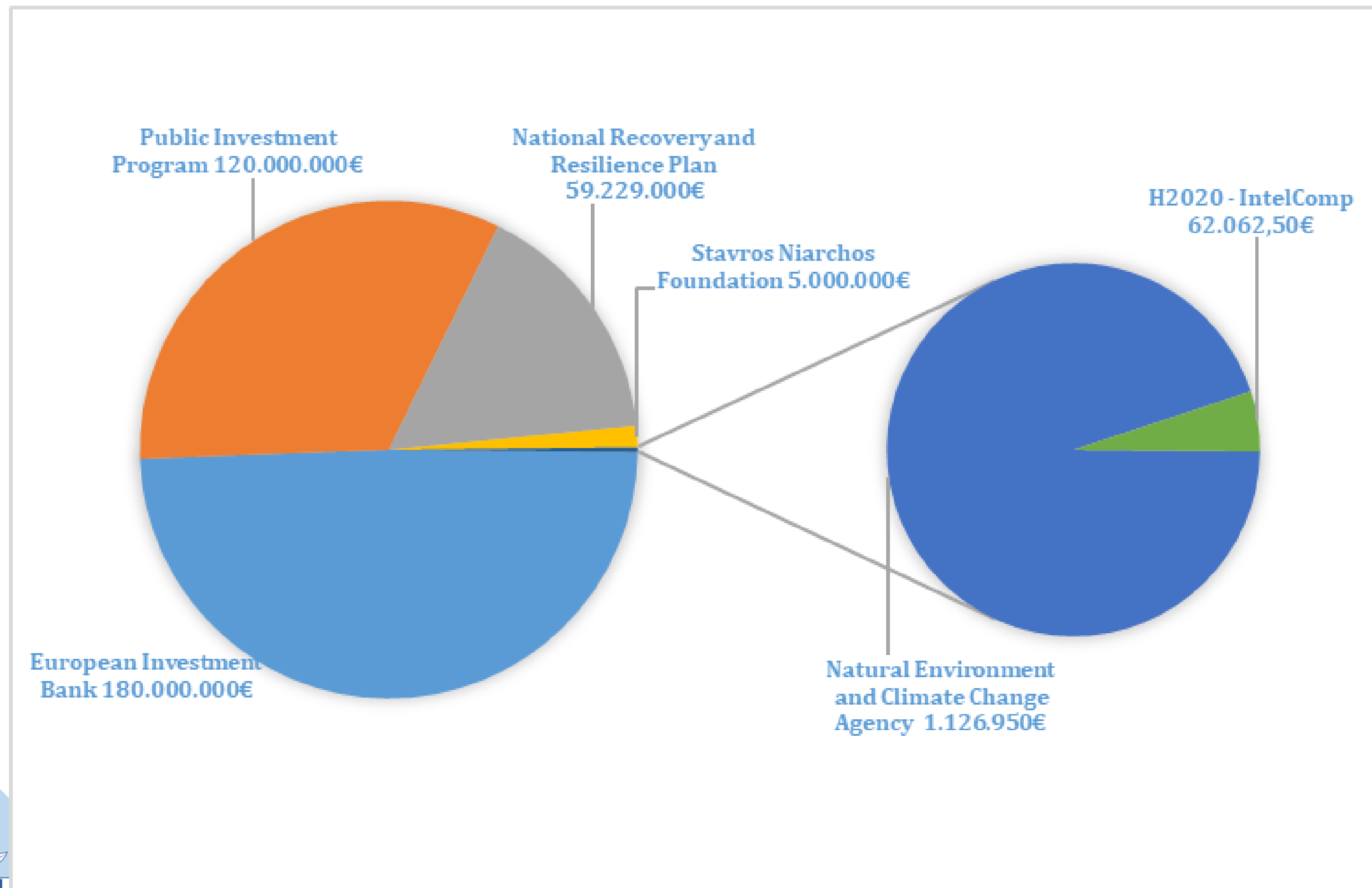




# HFRI's Financial Resources



**H.F.R.I.**  
Hellenic Foundation for  
Research & Innovation



**Total HFRI budget: 365.418.012,50€**



**HFRI budget for calls:**

**339.335.753,03€**





# HFRI's Data



**H.F.R.I.**  
Hellenic Foundation for  
Research & Innovation

23  
Calls

58.480.000€ for  
Research Projects of  
Postdoctoral Researchers  
3.720 Submissions  
369  
Funded Projects

158.286.253€ for  
Research Projects of  
Faculty Members and Researchers  
7.482 Submissions  
439  
Funded Projects

39.600.000€  
for PhD Scholarships  
6.896 Submissions  
1.439 Scholarships

16.665.000€  
for Science and Society & Other Projects  
955 Submissions  
109 Funded Projects

*Note: 3 calls are under evaluation. It is estimated to be funded 145 more PhD Scholarships and 300 Projects.*

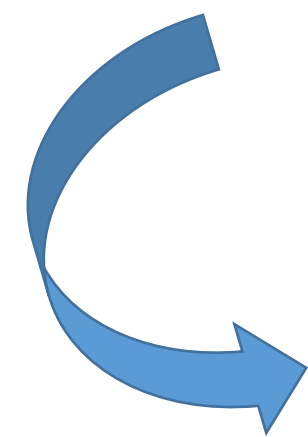




# HFRI's Data – Focus on Physical Sciences

## Scientific Area 1: Physical/Natural Sciences

**72 Projects / 859 Proposals**



## Scientific Field: Physical Sciences

**25 Projects / 313 Proposals**

**1 Project / 24 Proposals**

### Scientific Subfield:

**Nuclear Physics**

**10 Projects / 63 Proposals**

### Scientific Subfield:

**Particles and field Physics**

**11 Funded Projects, of approximately 2.000.000,00€ in these subfields, are under implementation in the framework of the calls for the support of Faculty Members, Researchers and Post-Doctoral Researchers.**

*Note: The provided data are referred to the calls related to the funding of research projects of Faculty Members, Researcher and Post-doctoral Researchers.*



A close-up photograph of two hands shaking, symbolizing cooperation. The hand on the left is dark-skinned, and the hand on the right is light-skinned. A white square graphic is overlaid on the center of the handshake. The background is a plain, light-colored wall.

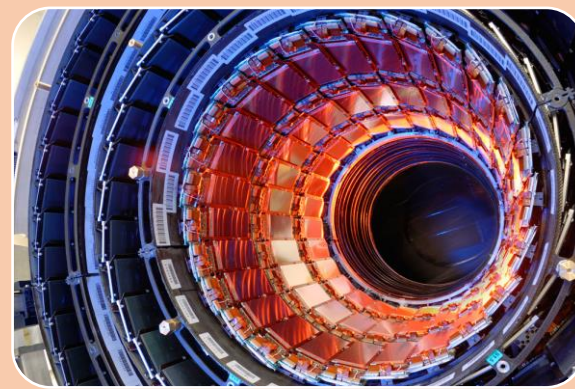
Internationalization / International  
R&I Cooperation



# Internationalization / International R&I Cooperation



**Participation to Horizon Europe and ERA (Partnerships, Missions, Widening, ERA Policy Actions etc.)**



**Access to international Research Organizations and facilities (CERN, EMBL, F4E and others)**



**Bilateral and Multilateral R&D Cooperation**



**Support International Networking of Business and Research Organizations (COST, EUREKA)**



# Participation to European Partnerships



## Art. 187 TFEU

High Performance Computing-HPC JU

Key Digital Technologies – KDT-JU



## Art. 185 TFEU

PRIMA – Partnership for Research and Innovation in the Mediterranean Area



Co-funded Partnerships/1st wave (Driving Urban Transition, Clean Energy Transition, Biodiversa+, Blue Bio, Water4All, Innovative SMEs, ERA4Health, THCS)

Co-programmed Partnerships (European Open Science Cloud –EOSC, Chemical Risk Assessment – PARC)



# Current Bilateral and Multilateral R&D Cooperation Programmes



## Greece - Germany

24 active projects co-funded by the GSRI and BMBF

2+2 scheme (1 research organization +1 private enterprise from each country)



## Greece – Israel

8 active projects co funded by GSRI and ISERD

1 private enterprise from each country +/- research organisation



## Greece – China

23 active projects co-funded by GSRI and MOST



**USA, Cyprus, Turkey**







# Funding Sources

# Funding Sources

**Indicative Budget PP 2021-27: > 1,6 b €**

OP “Competitiveness”  
Research, Innovation,  
Advanced Technologies:

**633.228.490 €**

OP “Competitiveness” Skills :

**139.622.108 €**

OP “Competitiveness”  
Financial Instruments for  
innovative entrepreneurship:

**110.000.001 €**

Recovery and Resilience  
Programme:

**485.000.000 €**

Just Transition Fund:

**250.000.000 €**

Regional Operational  
Programmes, Other Sectoral  
O.P.s, National Investments  
Programme, Tax Incentives







HELLENIC REPUBLIC  
MINISTRY OF DEVELOPMENT

**GSRI**

GENERAL SECRETARIAT FOR  
RESEARCH AND INNOVATION

**Thank you for your attention!**







# National Smart Specialization Strategy 2021-27

---

*A Holistic Agenda for Smart Economic Transformation combining 4 dimensions: R&I, Digitalization, SMEs, Skills*

## Vision

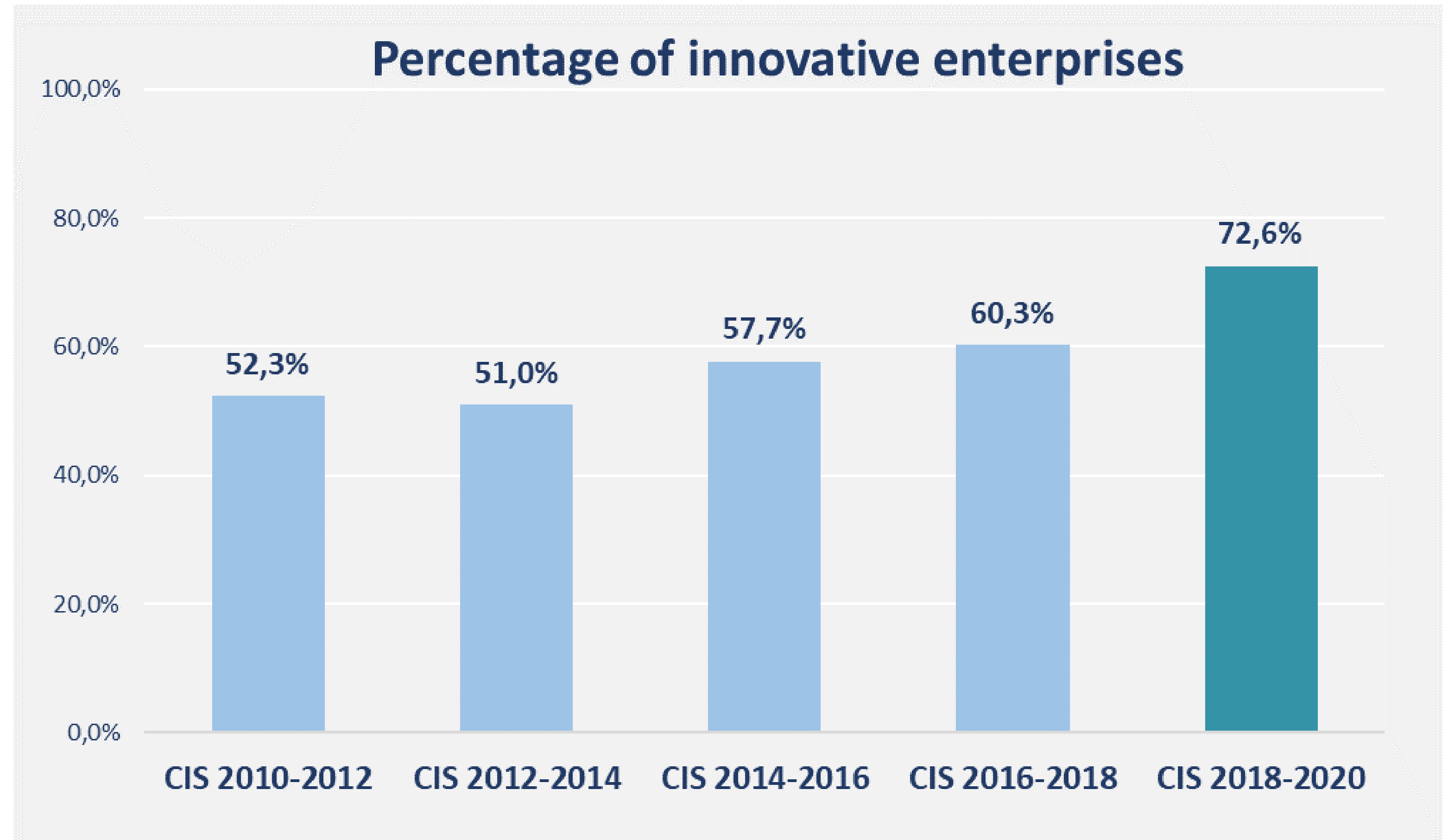
A new growth model socially, financially and environmentally sustainable, based on knowledge and its valorization for the production of high added value products and services, capable to integrate into global value chains.

Investments in research and innovation are in line with the country's growth strategy, providing the necessary innovative background aiming at increasing the competitiveness of the Greek economy and solving important social problems.





The percentage of innovative enterprises in Greece for the period 2018-2020 reached 72.6% compared to 60.3% for the period 2016-2018, showing an increase of 12.3 percentage points.





# Business & Academia Collaboration and Co-creation



**Collaborative Projects, Industrial research and Experimental development in SMEs / New “Research- Innovate” Programme**

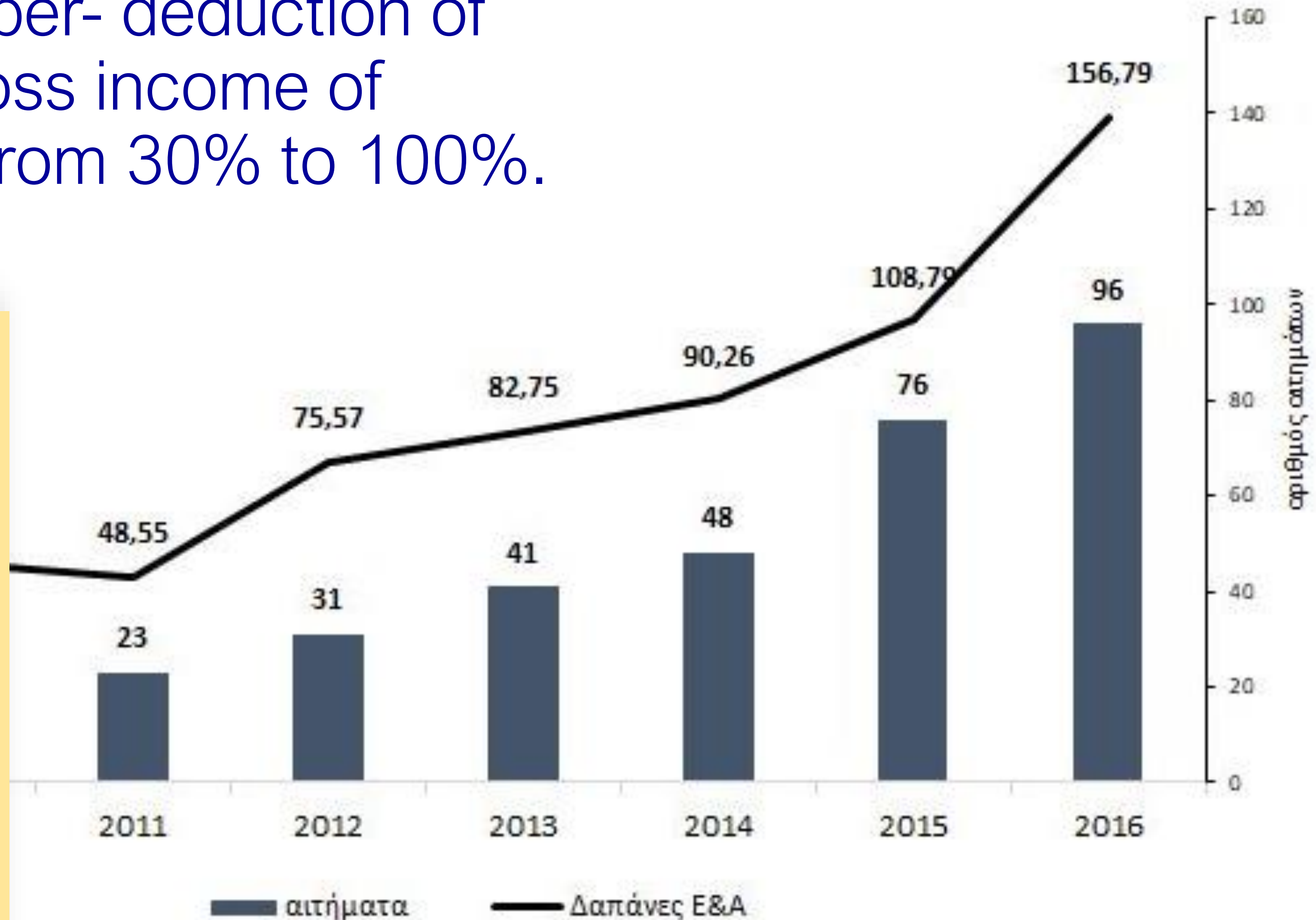


**Public Private Partnerships (National Joint Undertakings) for Strategic, long – term business academia co-creation**



# Tax incentives for R&D : super- deduction of R&D expenses from the gross income of undertakings will increase from 30% to 100%.

- ✓ R&D expenditures certified by the General Secretariat of Research and Innovation are showing an increase. From 2010 to 2016, both the number of requests and R&D spending by businesses tripled.
- In accordance with the provisions of Articles 46 and 55 of Law 4712/2020, the Article 22A of Law 4172/2013 was amended and from 01.09.2020 the over-discount percentage from 30% amounts to 100%.





# ATHENA – Research and Innovation Center in Information, Communication and Knowledge Technologies



## Institutes:

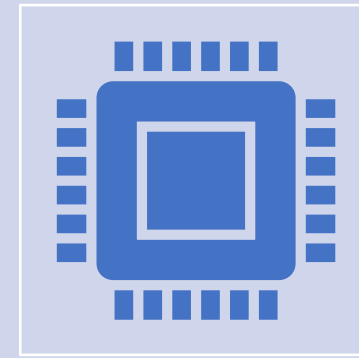
Institute of Language & Speech Processing

Industrial Systems Institute

Information Management Systems Institute

## More structures:

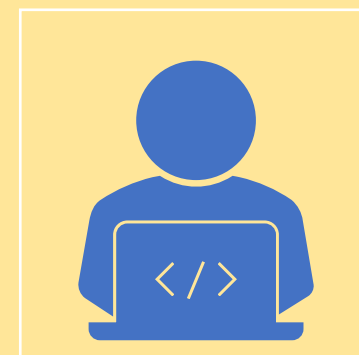
- ✓ Corallia – Hellenic Technology Cluster Initiative
- ✓ Space Programmes Unit
- ✓ Robotics Perception and Interaction Unit
- ✓ Environmental and Networking Technologies and Applications Unit (ENTA)
- ✓ Pharma Informatics Unit
- ✓ Sustainable Development Unit
- ✓ Archimedes Unit



The **mission** of Athena RC is to conduct **outstanding research in Informatics and Computational Sciences**, tackling global challenges, addressing local needs, and producing novel and deep technological results with a broad impact on other sciences, industry, and society at large.



The **vision** of Athena RC is to **create knowledge and devise solutions and technologies** for the digital society. It aims to serve the full spectrum of the research lifecycle, starting from basic and applied research, continuing on to system & product building and infrastructure service provision, and ending with technology transfer and entrepreneurship.



The **scope** of activities of Athena RC includes all Information and Communication Technologies, from the perspective of both Computer Science and Computational Sciences and covering all software and hardware aspects. These include all areas of informatics, data science, robotics, automation, signal processing, artificial intelligence, networking and digital communication, and modelling.





# NOA – National Observatory of Athens



## Institutes:

The National Observatory of Athens has long been used by Greek and foreign Astronomers as the basis for astronomical, meteorological, cartographical and geodynamical measurements and observations in the more than 170 years long course of its history.

Today the buildings of NOA at Thission include an Astrogeophysics Museum, housing clocks, telescopes and other instruments of the 19th century, as well as an extensive 19th century library.

The activities of the National Observatory of Athens are organized in 3 research Institutes which besides basic and applied research and services to the society they provide the facilities for graduate student training in collaboration with other Greek and foreign Universities.

NOA hosts the UNESCO Chair for Natural Disasters and the Greek Focal Point of the Global Earth Observing System of Systems (GEOSS), operates the National Seismological Network, participates in the OPTICON and other international research networks, etc.

**Institute for  
Astromony,  
Astrophysics,  
Space  
Applications and  
Remote Sensing  
(IAASARS)**

**Institute for  
Environmental  
Research and  
Sustainable  
Development  
(IERSD)**

**Geodynamic  
Institute  
(GEIN)**





# NHRF – National Hellenic Research Foundation



The National Hellenic Research Foundation, one of the largest Research Centers in Greece, founded in 1958, is a legal entity under private law, non-profit Research Foundation

During the last 60 years, NHRF has been an important pillar for the modernization and development of Greek Scientific Research, ensuring the country's international presence and encouraging the outreach and the scientific development. Its multi-faceted nature, through the successful coexistence of Humanities and Natural Sciences Institutes, affords a unique advantage and achievement at the national level and increases its competitiveness abroad

NHRF runs several educational activities addressed to researchers, students, teachers as well as the general public. In 2015 NHRF launched its first post-graduate program entitled "Bio-entrepreneurship" in collaboration with the University of Thessaly, whereas in April 2016 NHRF signed a Cooperation Agreement with the Hellenic Open University

## Institutes:

Institute of  
Historical  
Research  
(IHR)

Institute of  
Chemical  
Biology  
(ICB)

Theoretical and  
Physical  
Chemistry  
Institute  
(TPCI)







# CERTH – Center for Research & Technology Hellas

Since its establishment in 2000 as a legal entity governed by private law with non-profit status, the Centre for Research and Technology Hellas stands at the forefront of basic and applied research, tackling complex challenges that afflict society

Climate change, sustainable energy, artificial intelligence, advanced robotics, Internet of Things, holistic approaches to healthcare and nutrition, autonomous vehicles smart cities of the future and circular economy, are the primal fields around which CERTH's five (5) institutes are organized which bring together more than 1100 people (engineers and scientists in their majority), in 6 regions and 7 cities

Moreover, CERTH excels in innovation as indicated by the numerous industrial collaborations with worldwide acknowledged companies (14% of its annual incomes derive from bilateral industrial research projects) and the development of innovative entrepreneurship (16 spin-off companies currently operating)

## Institutes:

Chemical  
Process &  
Energy  
Resources  
Institute  
(CPERI)

Hellenic  
Institute of  
Transport  
(HIT)

Information  
Technologies  
Institute  
(ITI)

Institute of  
Applied  
Biosciences  
(INAB)

Institute for  
Bio-Economy  
and Agri-  
Technology  
(IBO)





# NSCR “D” – National Center for Scientific Research “DEMOKRITOS”

Founded in 1961 as a Centre for Nuclear Research, Demokritos is today the largest multidisciplinary Research Centre of Greece with approximately 190 Researchers in tenured and tenure-track positions and over 500 Research Personnel working in projects funded mainly by grants from State Funds, the European Union and Private Industries

Demokritos has a strong presence in international research. Analyses of the Centre’s bibliometric profile by the National Documentation Centre, as well as by Nature Index show Demokritos in the top research organizations of Greece concerning the quality and the impact of research publications. Evaluations by Dianeosis – NTUA of the Centre’s ability to attract and coordinate competitive European research grants present Demokritos in the top 50 European Research Organizations

Demokritos coordinates three National Research Infrastructures (Innovation\_el, Openscreen and Calibra) and participates in another eight. It also operates quality-certified laboratories offering specialized measurements and testing for the Environment, Energy, the National Network for Precision Medicine and the National Antidoping Laboratory

## Institutes:

Institute of Informatics & Telecommunications

Institute of Nanoscience and Nanotechnology

Institute of Nuclear & Radiological Sciences and Technology, Energy and Safety

Institute of Biosciences & Applications

Institute of Nuclear and particle Physics



# NCSR – National Centre for Social Research

*The National Center of Social Research –EKKE- was established in 1959 under the auspices of UNESCO and is the only public institution in Greece dedicated to the social sciences.*

## Since its establishment, NCSR :

- ✓ established a research tradition in areas such as **social policy, political sociology** and **electoral geography, social geography** and **social anthropology**
- ✓ **conducts social research on a wide range of subjects**, constantly enriching a decades-long tradition with issues of current importance
- ✓ **provides support to the State by designing and evaluating public policies** at the national, regional and local level, as well as providing research and expertise reports aiming at the timely indication of critical social and political issues
- ✓ maintains constant **international collaboration** by its presence in international research and expertise networks as well as major European research programs
- ✓ **contains one of the country's largest libraries for the social sciences** that provides support for its research activity as well as for the social sciences and research in Greece more generally
- ✓ **publishes print and free access digital works** related to the research on and analysis of aspects of contemporary Greek society. An important number of EKKE's publications are included in the syllabuses of University Department courses
- ✓ **publishes "The Greek Review of Social Research"**, the country's oldest social sciences journal and one of the first scientific journals to have adopted the blind peer review system.

## Institutes:

INSTITUTE OF  
SOCIAL  
RESEARCH

INSTITUTE OF  
POLITICAL  
RESEARCH





# HPI – Hellenic Pasteur Institute

HELLENIQUE PASTEUR  
INSTITUTE



HPI is a member of the International Network of Pasteur Institutes (RIIP), which in turn maintains a strong scientific collaboration with the Institute Pasteur in Paris and other Pasteur Institutes in North and Central Africa, SE Asia, Europe and Canada. HPI has been recognized as the forefront Institute of the network in the Eastern European and Balkans region.



HPI is a pioneer in the implementation of the Responsible Research and Innovation issues. Many activities aiming to the active public engagement are developed such as collaborations with patients' associations, collaborations with municipalities in order to raise public awareness on scientific issues.

## Main objectives pertain to activities in:

- ✓ Basic and applied biomedical research with emphasis on human and animal infectious diseases
- ✓ Issues of Public Health
- ✓ Research in the development, production, storage and distribution of vaccines, biological and therapeutic agents, according to National Demands set by the Greek Authorities
- ✓ Education and training in issues relating to the above objectives.





## The horizontal missions of HCMR are to:

- ✓ conserve the health of the hydrosphere so that aquatic ecosystems continue providing their services (i.e. provisional, regulatory, aesthetic, cultural) to future generations
- ✓ promote sustainable exploitation of Marine biological and other resources, including marine energy in the frame of blue growth (HORIZON 2020)
- ✓ support the regional development
- ✓ promote sustainable aquaculture
- ✓ provide advice to national, Mediterranean and EU institutional bodies on environmental sustainability and management.

## The missions of HCMR are accomplished through:

- ✓ field laboratory and experimental multidisciplinary, basic and applied, research in different scientific fields related to the physics, chemistry, geology, biology, aquaculture and fisheries of aquatic ecosystems, in the hydrosphere-atmosphere interface, the coastal zone, the water column and sea bottoms
- ✓ maintaining public aquaria and disseminating information and knowledge on major achievements through a variety of organized events
- ✓ undertaking specific pilot studies and designing management plans on specific issues
- ✓ the exploitation of products deriving from living and non-living resources either by HCMR or by contracts with third parties and supplying of various maritime and marine services

## Institutes:

Institute of  
Marine Biology,  
Biotechnology  
and Aquaculture  
(IMBBC)

Institute of  
Oceanography  
(IO)

Institute of  
Marine  
Biological  
Resources and  
Inland Waters  
(IMBRIW)





"ALEXANDER FLEMING"  
Biomedical Science Research Centre

# BSRC – Biomedical Sciences Research Center “ALEXANDER FLEMING”

BSRC Fleming has gained international recognition for its pioneering research towards understanding the molecular and cellular basis of human diseases, such as autoimmune disorders, cancer, neurodegenerative conditions, osteoporosis, pulmonary fibrosis and others, and the development of new approaches for their diagnosis and treatment. The Center has achieved top performance indicators of academic and research excellence.

Fleming has established state-of-the-art facilities that offer services in biomedical research to academic researchers, pharmaceutical and biotechnology companies in Greece and abroad. These facilities include an animal model unit, units of transgenesis, genomics, proteomics, flow cytometry & cell sorting, bioimaging, micro-CT, histopathology, bioinformatics, single cell analysis. The Centre has also established a Technology Transfer Office. At the same time, the Centre coordinates the national node of the ESFRI European Research Infrastructures, InfrafrontierGR/ Phenotypos and ELIXIR-GR, playing an important role in the implementation of the country's and EU's plans for Research

In 2006, Fleming established the spin-off company Biomedcode Hellas SA, a highly innovative Contract Research Organization (CRO) providing full preclinical drug evaluation services to small and large pharmaceutical companies worldwide, commercializing proprietary animal models of chronic inflammatory diseases

## Institutes:

**Institute for  
Fundamental  
Biomedical  
Research (IFBR)**

**Institute for  
Bioinnovation  
(IBI)**





# FORTH – Foundation for Research and Technology, – Hellas”

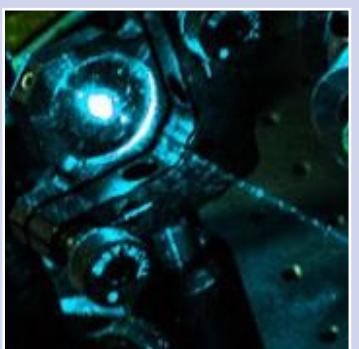


**FORTH**  
FOUNDATION FOR RESEARCH AND TECHNOLOGY - HELLAS

## Institutes:



The Foundation for Research and Technology – Hellas (FORTH) was founded in 1983. It is one of the largest research centers in Greece with well-organized facilities, highly qualified personnel and a reputation as a top-level research institution worldwide.



FORTH conducts specialized scientific research in strategic high-added value sectors, focusing on interdisciplinary research and development (R&D) activities in areas of major scientific, societal and economic interest, **such as:** Lasers and Photonics, Microelectronics, Advanced Materials/Nanotechnology, Molecular Biology and Genetics, Biotechnology, Computer Science, Bioinformatics, Precision Medicine, Systems Biology, Robotics, Telecommunications, Applied and Computational Mathematics, Chemical Engineering Sciences, Energy, Environment, Human and Social Sciences, Astrophysics and Astronomy.

Institute of Electronic Structure and Laser (IESL)

Institute of Molecular Biology and Biotechnology (IMBB)

Institute of Computer Science (ICS)

Institute of Applied and Computational Mathematics (IACM)

Institute of Astrophysics (IA)

Institute for Mediterranean Studies (IMS)

Institute of Geoenegy (IG)

Institute of Chemical Engineering Sciences (ICES)

Biomedical Research Institute (BRI)





# BRFAA – Biomedical Research Foundation Academy of Athens



## Structure:

The Biomedical Research Foundation of the Academy of Athens (BRFAA) is the most recent addition to the Life Sciences Research organizations in Greece, which began its activities in 2004. It is located at a distance of 3 km from downtown Athens, and is housed in a modern 32,000 m<sup>2</sup> building

The founding principle of BRFAA is to host both basic and clinical research, thus, providing an ideal setting for the emergence of translational activities (Medical Application). BRFAA is one of the few institutes with such character in Europe and is certainly unique for Greece.

The main goal of BRFAA is to achieve excellence in the Biomedical Sciences by recruiting high quality investigators carrying out cutting-edge basic and translational research and by training young researchers in a state-of-the-art facilities, which provide a particularly stimulating scientific environment and strong research infrastructures.

Center of Basic Research

Center of Clinical and Translational Research, and Experimental Surgery

Center of Systems Biology

Center of Environmental Health





# EEAE – Greek Atomic Energy Commission



## Targets:

- ✓ **Proposing legislation and issuing regulations.** (EEAE issues regulatory acts and suggests the adoption of legislation, preparing the respective texts (presidential decrees, ministerial decisions. Prepares and proposes the necessary legislation for the transposition of European Directives (under Euratom) into national law).
- ✓ **Inspections and licensing of facilities / applications.** (EEAE exercises regulatory control in about 2,500 laboratories of medical, industrial and other ionizing radiation applications and carries out electromagnetic field measurements in the vicinity of antenna base stations).
- ✓ **Recording doses of occupational exposure to radiation.** (EEAE monitors on a monthly basis more than 11,000 employees exposed to radiation).
- ✓ **Monitoring of environmental radioactivity levels.** (EEAE coordinates the national environmental radioactivity monitoring program and operates a telemetric environmental monitoring network. EEAE has the infrastructure and know-how to conduct spectroscopic analyses in food and consumer goods and provides radon measurement services).
- ✓ **Emergency response.** (EEAE responds operationally and consultatively to emergency situations involving a radioactive / nuclear agent).
- ✓ **Calibrations of radiation measuring instruments.** (Provides calibration and calibration services for ionizing radiation measuring devices).
- ✓ **Education and training.** (EEAE has been recognized as an International Atomic Energy Agency (IAEA) Regional Training Center in Europe and Central Asia in the field of safety in the use of ionizing radiation, the transport of radioactive materials and the management of radioactive waste).
- ✓ **Research and development.** (The research is a key component of the activities of EEAE, the results of which support its regulatory functions and reinforce the training and scientific incentive of its staff. The research activities of EEAE are reflected in its participation in research programs and in publications in scientific journals and participations in conferences).
- ✓ **International representations.** (EEAE represents the country in international and European organizations and committees with role in its areas of regulatory responsibility).
- ✓ **Public information.** (Provides information to the State and the public).

*The Greek Atomic Energy Commission (EEAE) is the national regulatory authority, competent for the control, regulation and supervision in the fields of nuclear energy, nuclear technology, radiological and nuclear safety and radiation protection*





## Structures:

The Science Park premises is the home of :

- ✓ **40** Companies
- ✓ **1** Research Institution (ISI)
- ✓ **1** Competence Center,  
(*Hellenic Center for Additive Manufacturing*)

Patras Science Park (PSP) was established according to the model of “Incubator” for New Technology Based Firms (NTBFs).

The main scope is to provide high quality infrastructure as well as co-shape the appropriate financial and social conditions that will support and promote the creation, operation and development of innovative firms through spin-off/spin-out processes and intensive technology transfer actions such as the cooperation among Universities, Research Centers and the Industry in local and national level.

For almost 30 years, PSP supports the growth of innovative, technology-based companies across several sectors such as ICT, biotechnology, clean energy and other industrial technologies, contributing to the City Region’s knowledge economy. The majority of the companies demonstrate a high degree of extroversion.



# NOESIS – Science Center and Museum of Technology



NOESIS – Thessaloniki Science Center and Technology Museum is a non-profit cultural and educational foundation that promotes the public understanding of Science and Technology, in a way that is both educational and recreational.

The main objective of the Center is the popularization of modern scientific and technological knowledge and its dissemination to the public through exhibitions, movies, educational programs, seminars and lectures.

## Center facilities:

**In the Center's premises visitors watch digital shows:**

- ✓ In the 160-seat digital Planetarium
- ✓ In the 300 seat Giant Screen Cinema (2D and 3D)
- ✓ In the 18 seat Motion Simulator (2D and 3D)

The Center aims to become a leading attraction in the field of Science Culture and Technology not only in Greece, but in South-Eastern Europe as well.

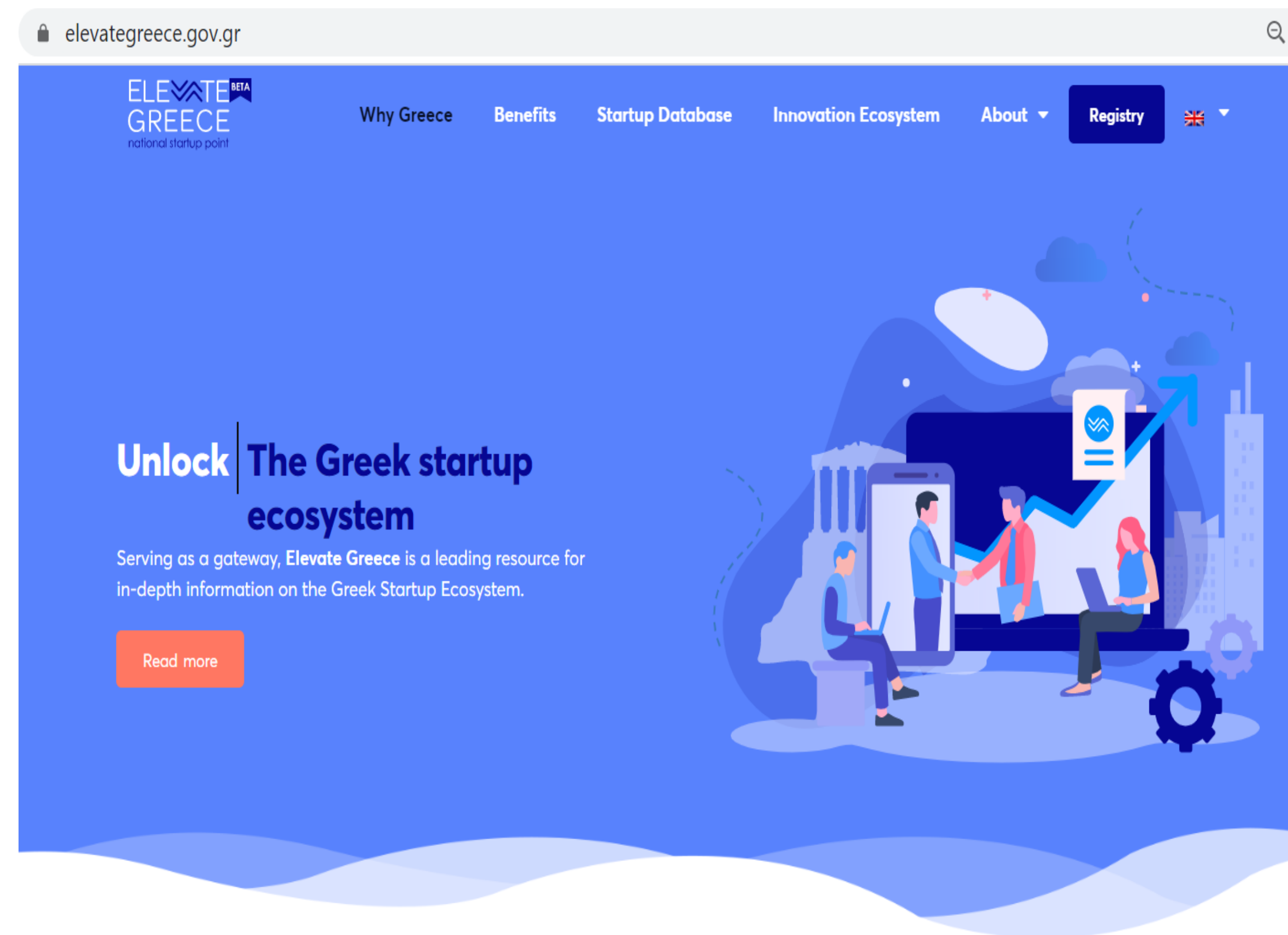
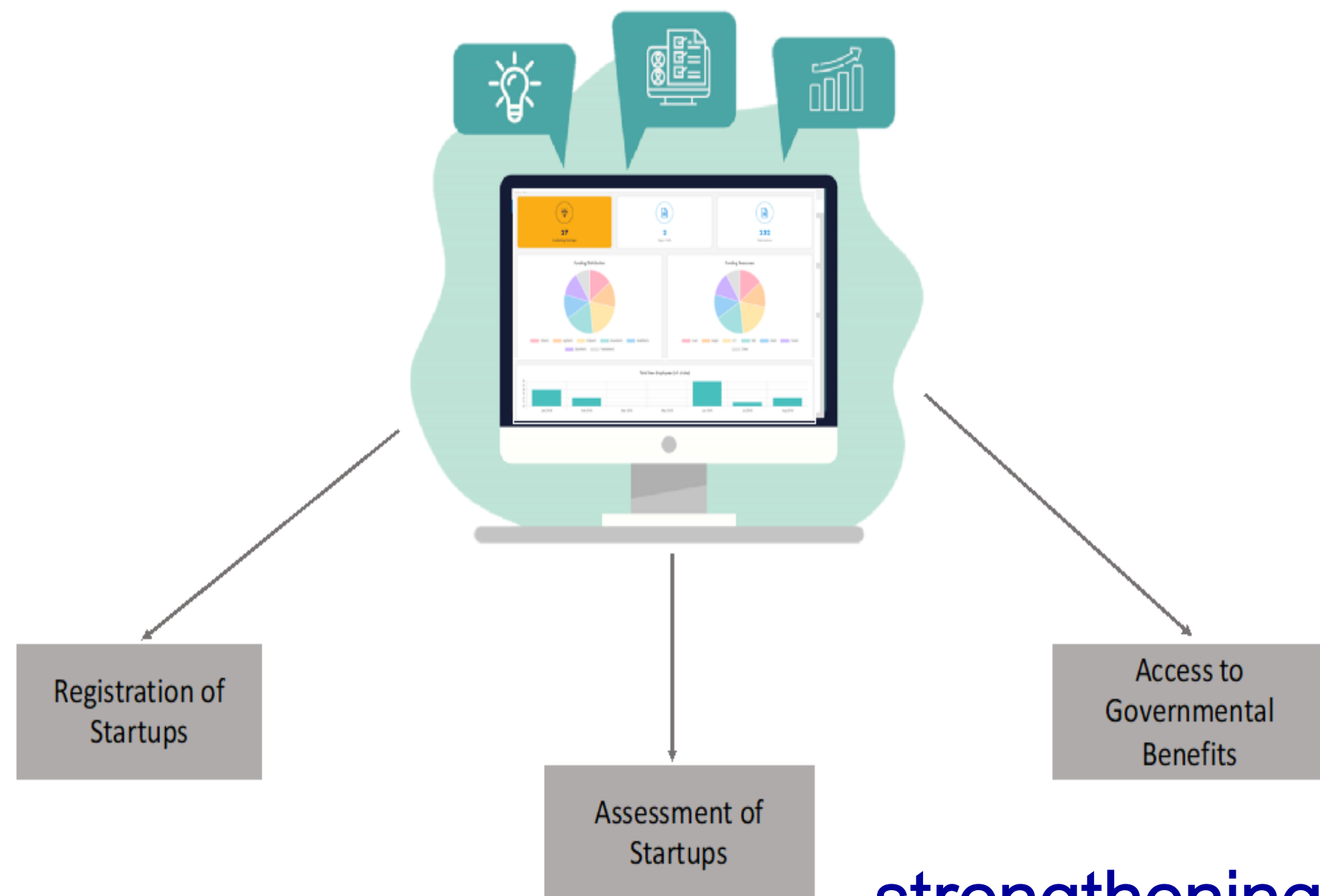
Moreover, NOESIS is a considerable partner in collective bodies of the field, since it is a member of the ECSITE (elected twice), ASTC and CIMUSET – ICOM (International Committee for Museums and Collections of Science and Technology) Board of Directors.





# National Start Up registry: ELEVATE GREECE

*Elevate Greece is an initiative of the Greek Government, which aims to map start-ups and support their development, with the ultimate goal of highlighting a strong innovation ecosystem.*



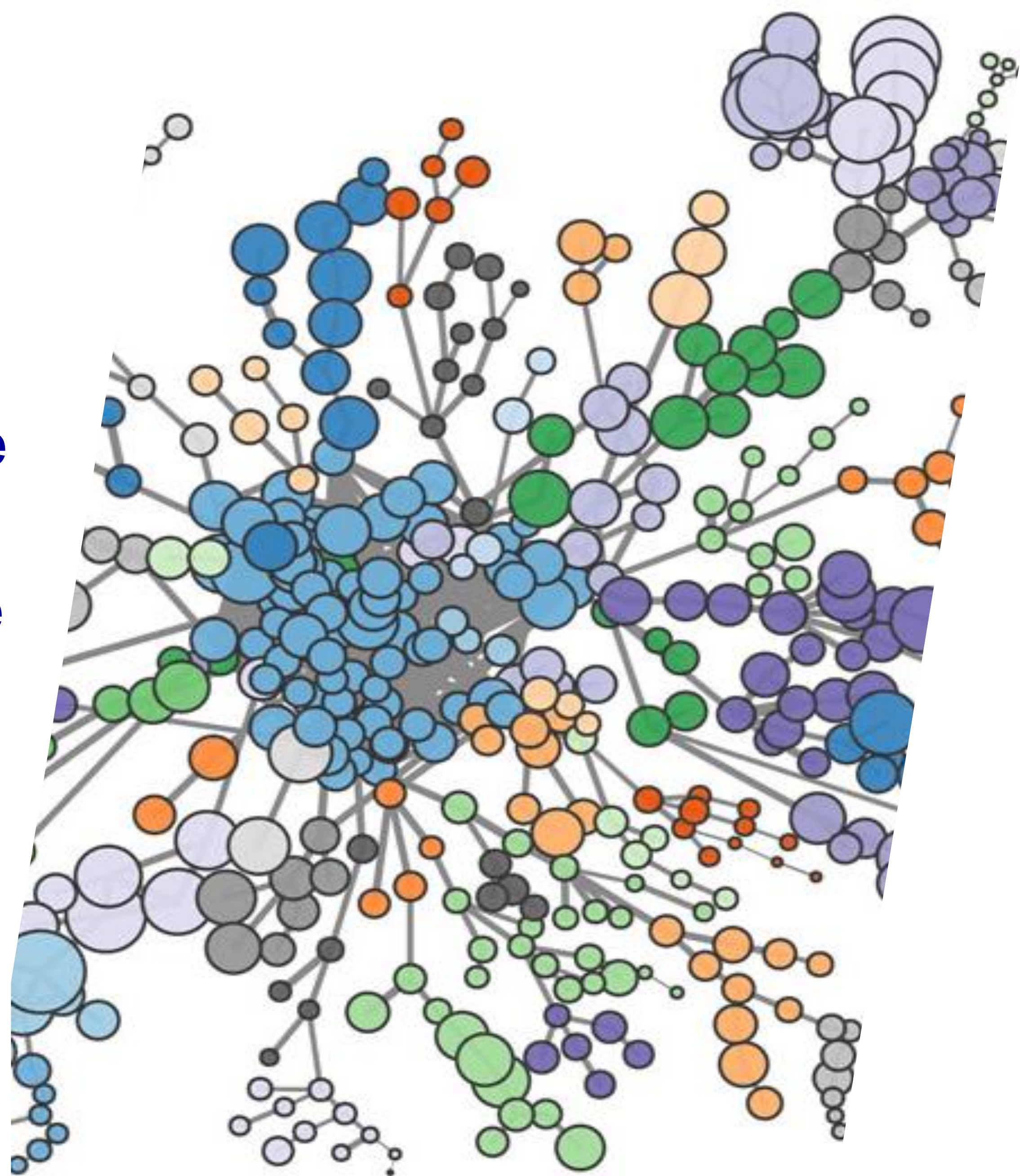
**strengthening the entrepreneurship and liquidity of start-ups/ innovative small and medium-sized enterprises (operating in areas of Smart Specialization/S3) of the National Register of New Enterprises "Elevate Greece", with 60 mio. € under the adverse conditions of the COVID-19 crisis**





>30 Innovation Clusters have already been supported

Well structured groups of companies (innovative start-ups, SMEs and large companies), research organizations and other institutions implementing collaborative activities to produce innovations, share facilities, knowledge and know-how and networking into global value chains.





# Innovation Districts are planned:

CHROPEI in Attica



ThessIntec in Thessaloniki



**> 100 m€ investments**

- ✓ 17.893 m3
- ✓ Easy access (Metro)
- ✓ Sufficient Space, expansion possibilities
- ✓ Contemporary interventions



# How to tackle the low rate of PCT patents' filings



- ✓ Expenses for patent application eligible in all R&D calls targeting enterprises
- ✓ Law 3842/2010, art. 71: Income attributable to an international patent is tax free for the first three years of the utilization of the patent
- ✓ Establishment of the Hellenic Academy of Industrial Property in spring 2019 to prepare certified patent attorneys



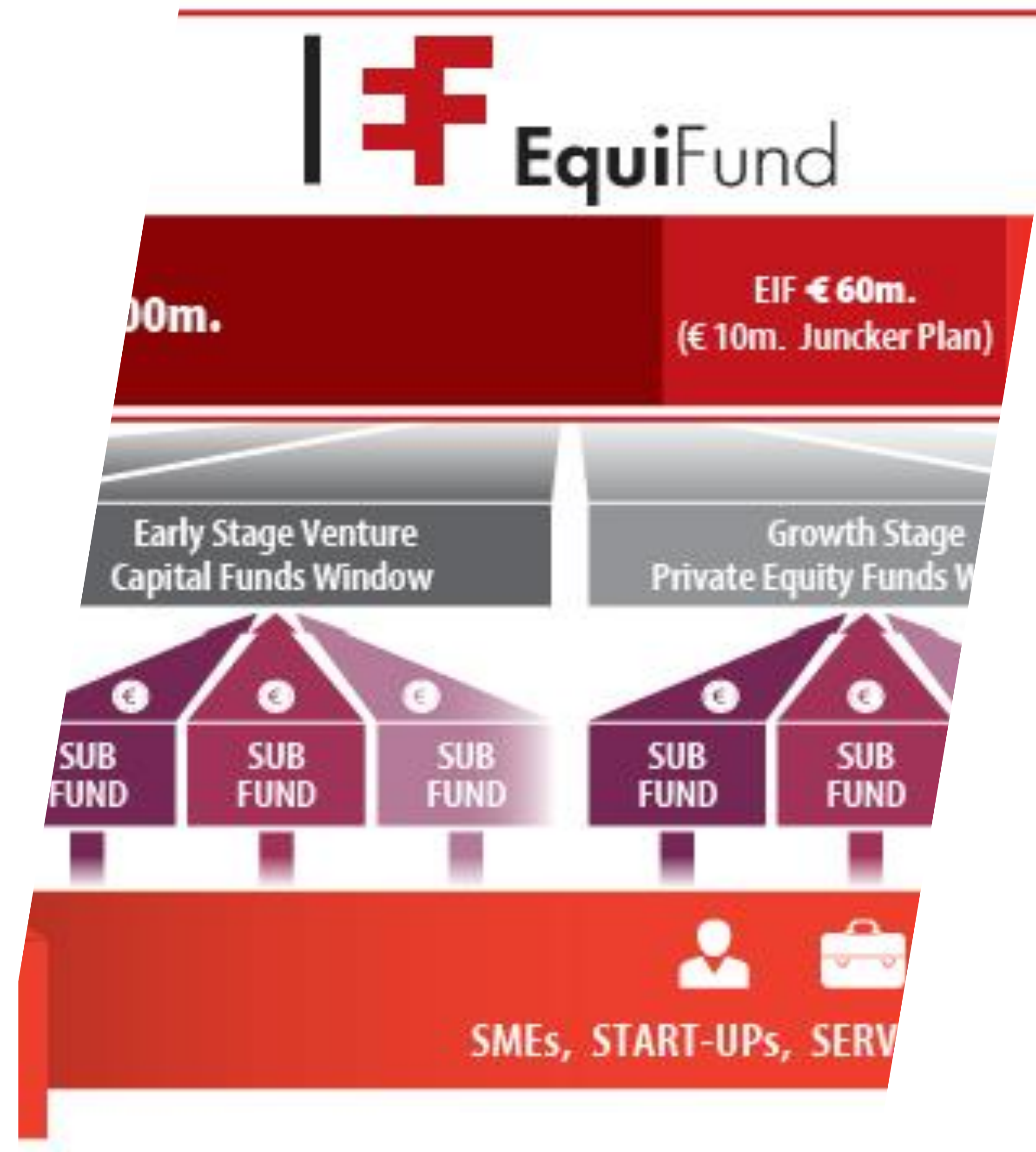


EquiFund:

# The EquiFund Fund of Funds was run

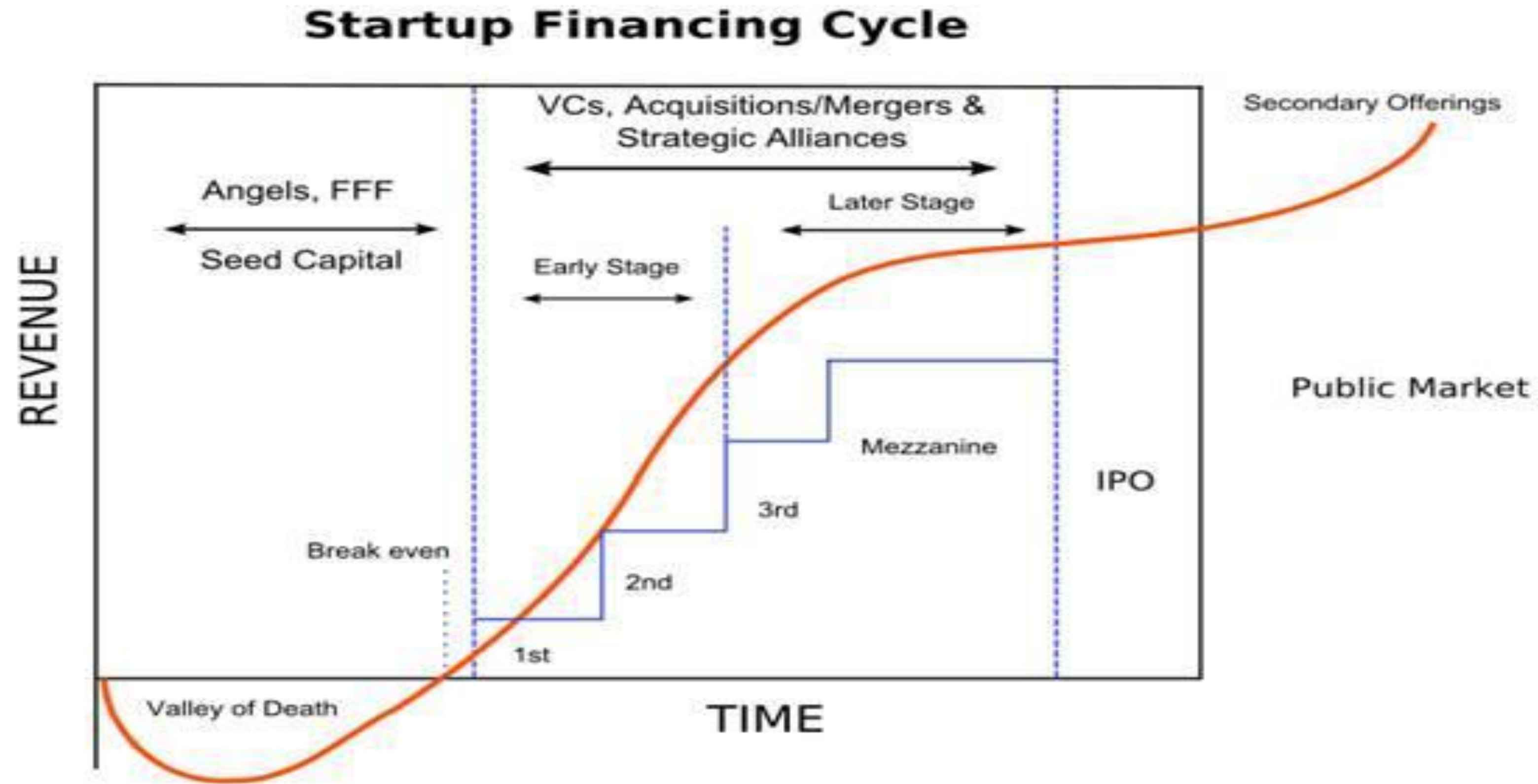
Innovation Window:

**93** investments amounting to € 96.6 million until 9/30/2022





# Tax incentives to Business Angels Investors





# ERA Policy Agenda Actions

GREECE officially participates in 6 ERA Actions. However, contributes to several activities of additional actions, for Knowledge Valorization in particular (enhanced dialogue, tour des capitales, MLE, workshops etc.)

**ERA Action 1:** Enable the open sharing of Knowledge and the re-use of research outputs, including through the development of the European Science Cloud (EOSC)

**ERA Action 4:** Promote attractive and sustainable research careers, balanced talent circulation and international, transdisciplinary and inter-sectoral mobility across the ERA

**ERA Action 8:** Strengthen sustainability, accessibility and resilience of research infrastructures in the ERA

**ERA Action 10:** Make EU Missions and Partnerships key contributors to ERA

**ERA Action 11.1:** An ERA for Green Transformation/ Building an R&I ERA Pilot on Green Hydrogen

**ERA Action 14.1:** Bring Science closer to the Citizens/Plastic Pirates Go Europe!







# COUNTRY PERFORMANCE IN HORIZON 2020

## Even better performance in H2020 Vs FP7

### Horizon 2020 Key Figures

Participation  
**5 421** 2,54%  
of EU total

Net EU Contribution  
**1,69B** 2,76%  
of EU total

Applications  
**34.487** 3,91%  
of EU total

Success rate  
**13,43%** 11,98%  
EU average

Number of organisations involved in H2020 projects. One organisation participating in N

Funding received by the project's participants after deduction of their linked third parties' funding

Number of organisations applying for Horizon 2020 grants. One organisation applying in N proposals

Ratio of the retained proposals to the total number of eligible proposals received

SME Participation  
**1 299** 23,96%  
of country total

SME Net EU Contribution  
**359,9M** 21,27%  
of country total

ERC Principal Investigators  
**36** 0,45%  
of EU total

MSCA Participation  
**580** 2,17%  
of EU total

Number of SMEs involved in H2020 projects. One SME participating in N projects is counted N times

Total funding received by SME participants after deduction of their linked third parties' funding

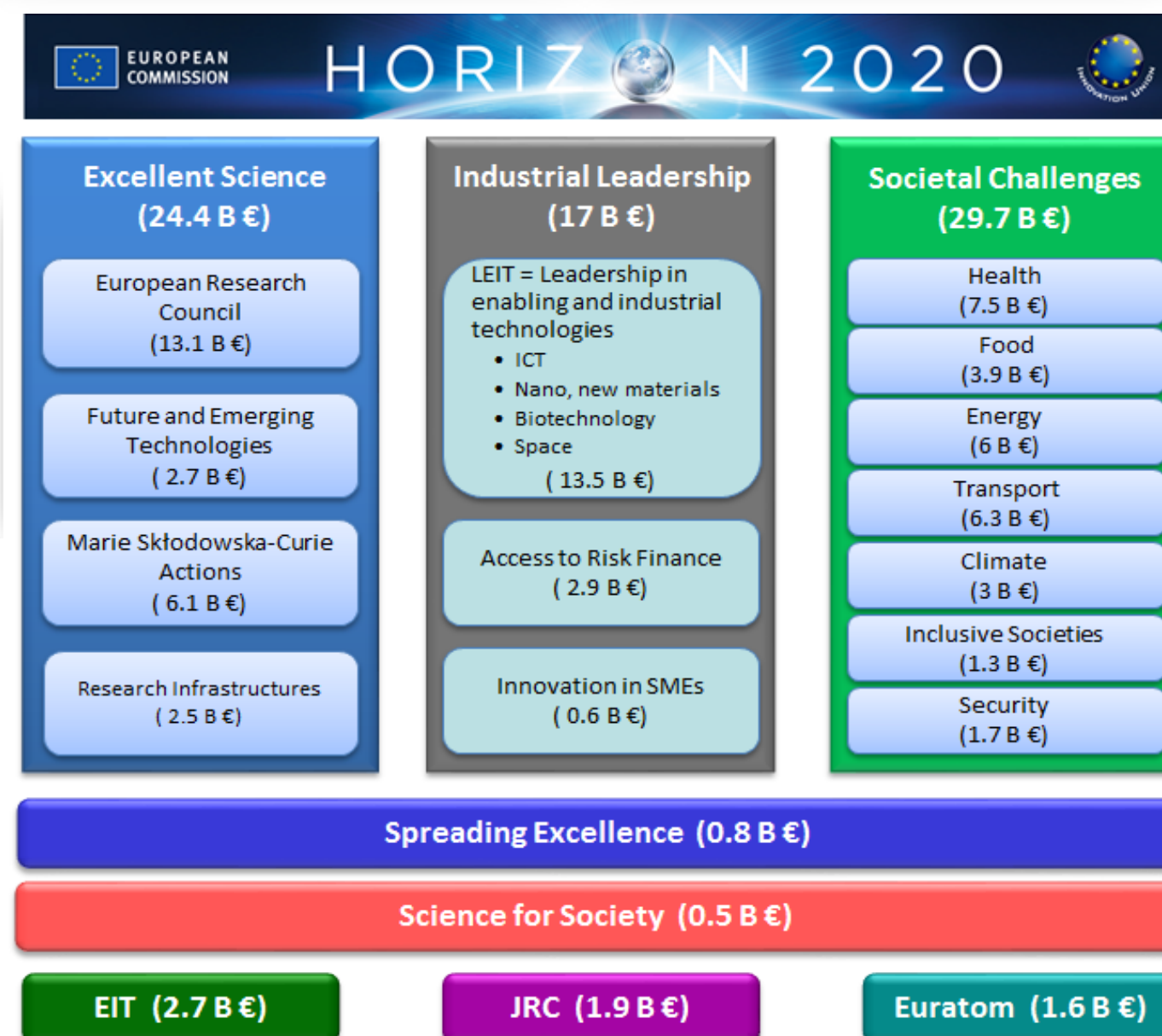
### Participation in Horizon 2020

Participation rank  
**8 out of 28<sup>EU</sup>**

Budget share rank  
**11 out of 28<sup>EU</sup>**

Ranking position based on the participations in H2020, for a country in its country group

Ranking position based on funding received from H2020, for a country in its country group



# #8 out of 28 in participations – #11 out of 28 in budget allocation

## Participation in Horizon 2020

Participation rank  
**8 out of 28<sup>EU</sup>**

Budget share rank  
**11 out of 28<sup>EU</sup>**

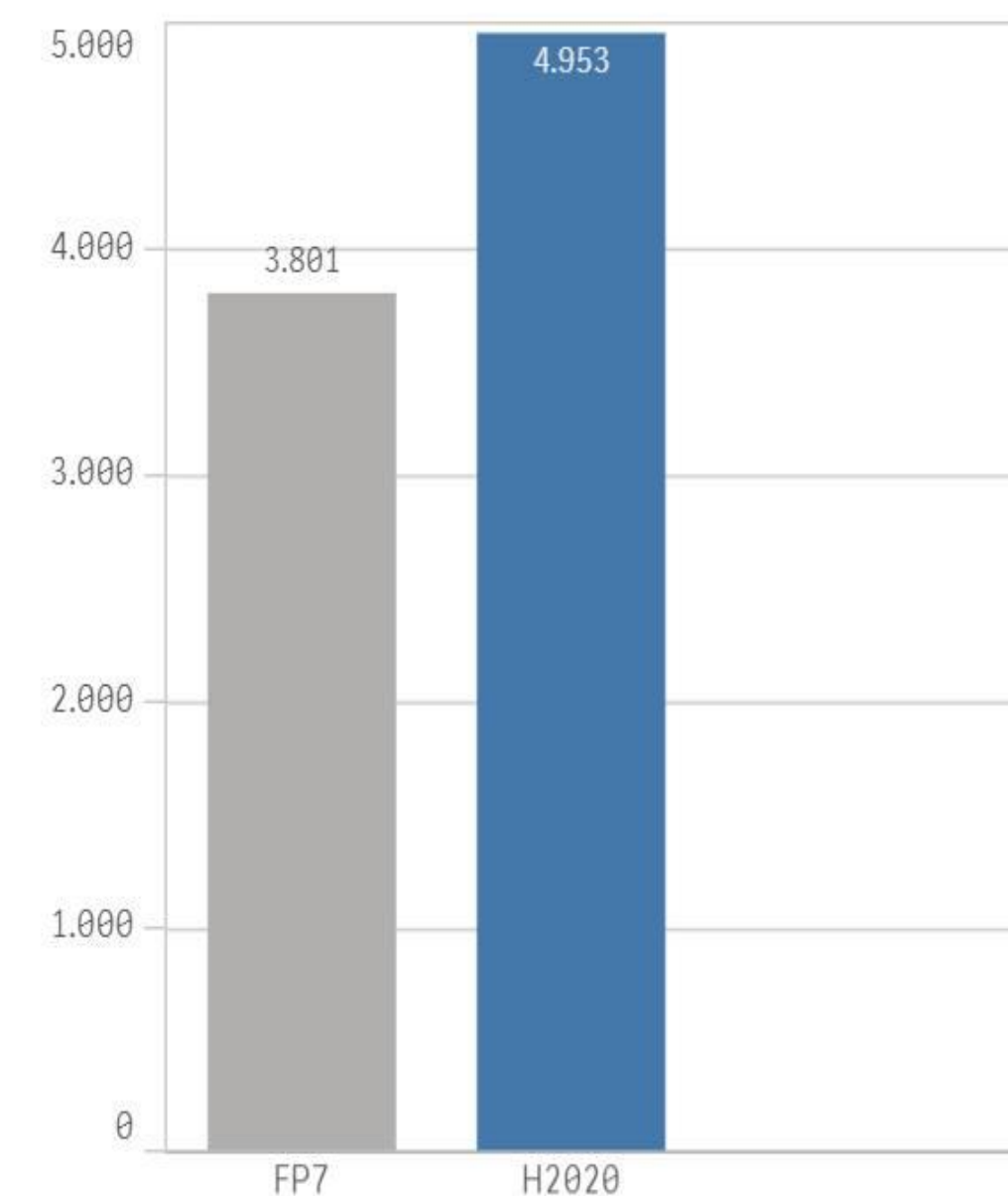
Ranking position based on the participations in H2020, for a country in its country group

Ranking position based on funding received from H2020, for a country in its country group

### Participation in Programmes - Greece

### Participation in Programmes - Greece

#### Participation across Programmes



#### EU Contribution (EUR) across Programmes

