



NuFACT 2023 Meeting

2023.08.21~26

Seoul National University

Workshop Venue (SNU Building 28): Natural Science Lecture Center

PA

Coffee & Reception

PL, PA

Coffee



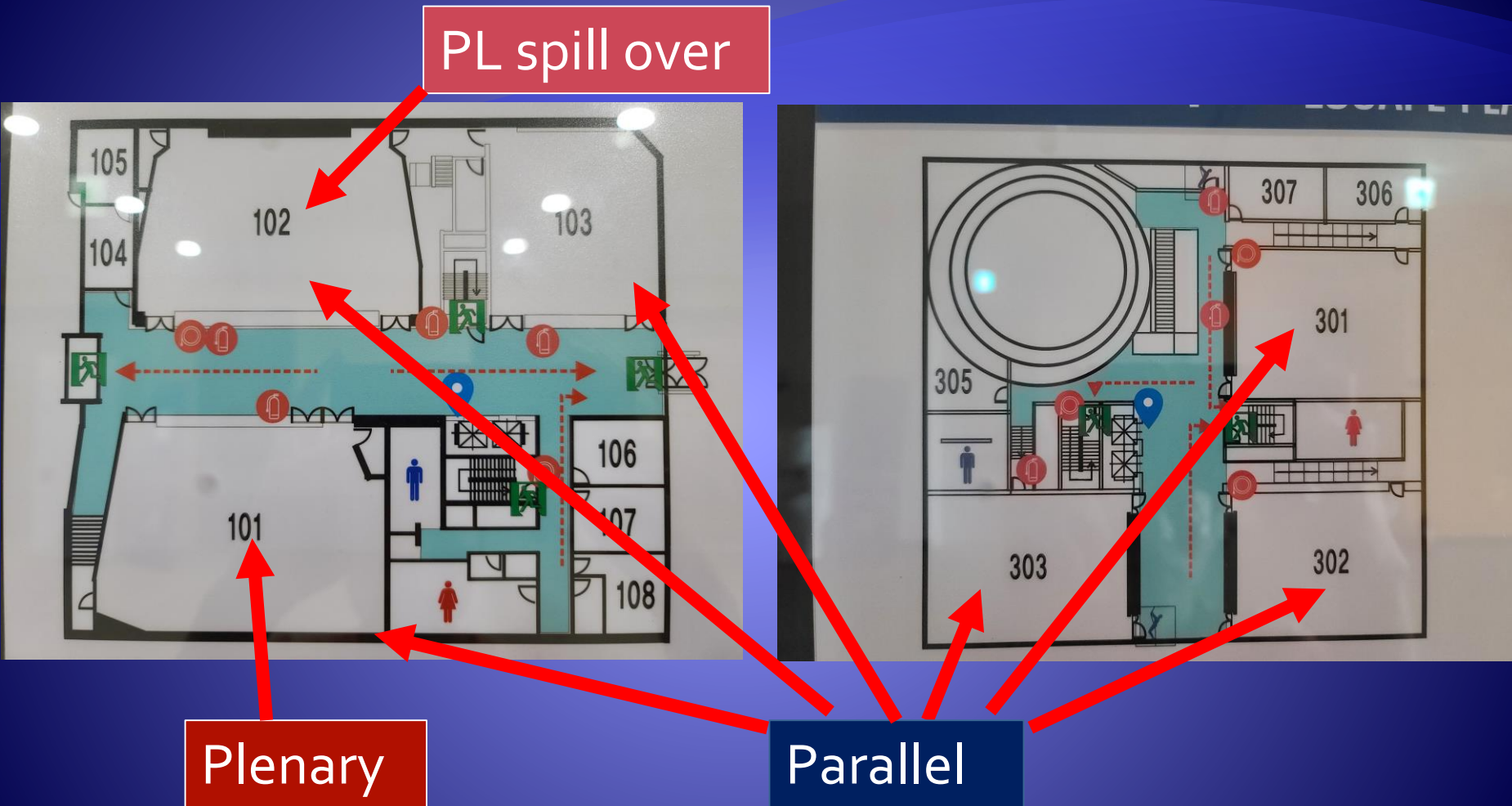
NuFACT Week at a glance

9 plenary sessions (40 talks)
 6 parallel sessions (120 talks)
 1 poster session (30)
 1 public talk

Total: 191 presentations
 252 Registered as of Aug.20

	Aug. 21	Aug. 22	Aug. 23	Aug. 24	Aug. 25	Aug. 26
	mon	tue	wed	thu	fri	sat
8:00						
8:30	Welcome	PL 3:	PL 5:	PL 8:	PA 3: joint 1x3 joint 4x6 wg 2, 5	PL: WG Summary
	PL: keynote					
10:00	Coffee					
10:30	PL: WG Introduction	coffee	coffee	coffee	coffee	Coffee
11:00	Introduction	PL 4:	PL 6:	PL 9: Panel discussions	PA 4: joint 1x5 wg 2,3,4,6	PL: Conclusion
11:30						
12:00	Lunch	Lunch	Lunch	Photo &Lunch	Lunch	
12:20		Lunch	Lunch			
13:00				Excursion		
13:30	PL 1:	PA 1: WG1~6	POSTER: (prallel : museum tour)		PA 5: joint 1x6 joint 4x5 wg 2,3	
14:00						
15:00	coffee	coffee	coffee			
15:30	PL 2:	Coffee	PL 7		PA 6: wg 1,2,4,5	
16:00						
17:30		Joint 1x2 Joint 3x4 WG 5,6				
18:00						
18:30	Reception		Public Talk	Banquet		
19:30						
20:30						

Plenary & Parallel Sessions



- Room 301, 302, and 303 available when no PA sessions
- Room 303 available on Friday

Information

- **Wi-Fi available in all meeting rooms**
- **To all speakers,**
Upload your file to share at least 10 minutes prior to the start of the session.
- **Posters** will be exhibited on Wednesday, and presenters should attend at the poster session (13:30-15:30).
The award ceremony on Saturday.
- **Rooms for working**
 - Room 301, 302, and 303 are available when there are no PA sessions
 - Room 303 available on Friday (whole day)
 - A meeting room, 403 for up to 15 people available (9:00-11:30, 15:00-17:00), please reserve an allocation ahead to avoid any possible conflicts. Contact: reception desk

SNU Map

Workshop Venue (28)

Lunch (38, 75-1, 28)

Reception (28)

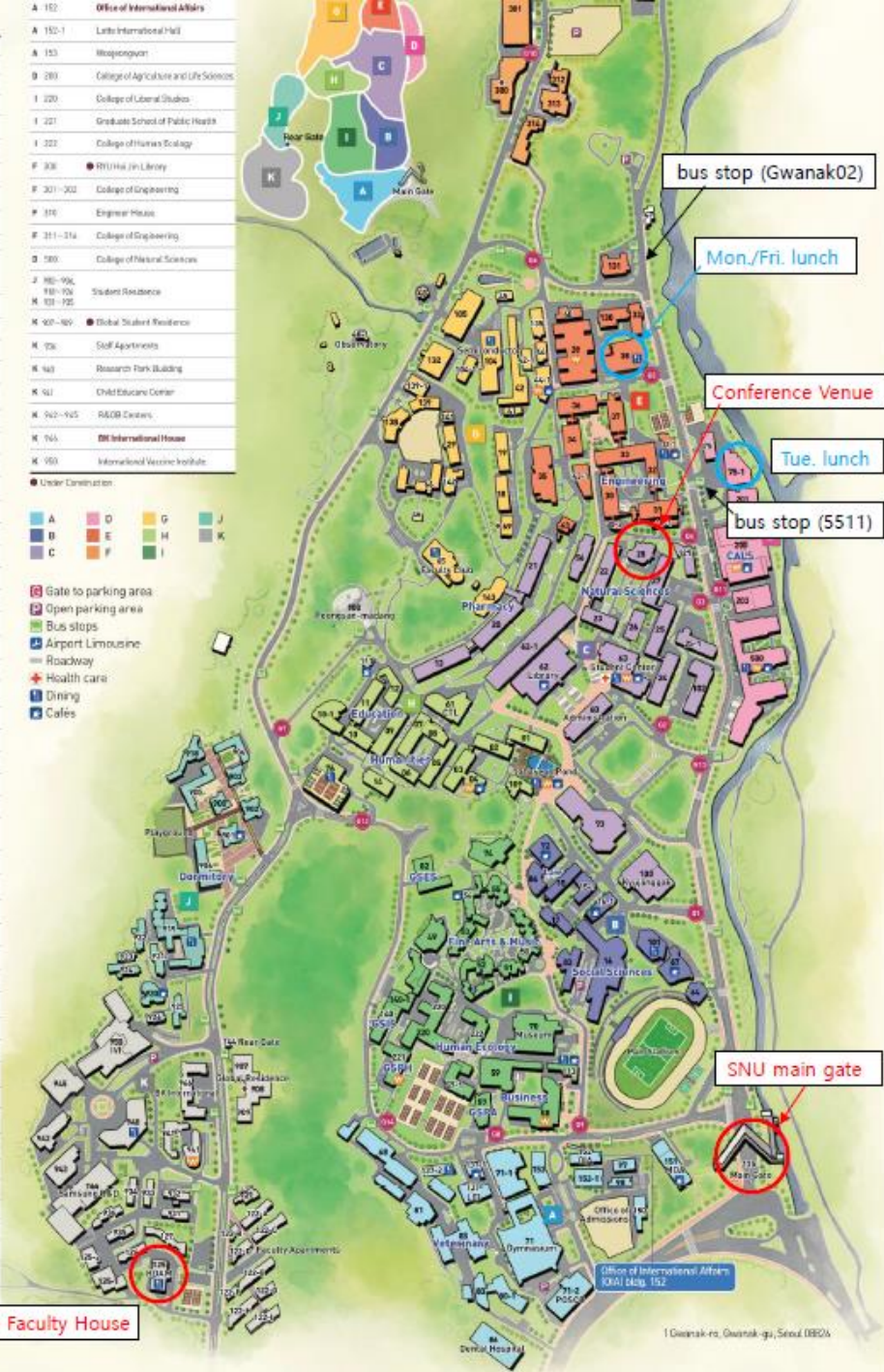
Bus stops (2, 5511)

Hoam Faculty House

BUILDINGS	
M 1-4, 16	College of Humanities
M 4	Shwung Humanities Hall
M 7-13	College of Education
N 15, 16, 117	School of Law
B 14	College of Social Sciences
B 14-1	Shwung Social Sciences Hall
O 18-19	College of Natural Sciences
C 27-28	College of Pharmacy
C 20-21	College of Pharmacy
B 29	
E 30-43-1	College of Engineering
O 44-1	Shwung Engineering Hall
O 45-45, 46, 48-1	Observatories
F 47	
I 48	Design Center & Concert Hall
I 58-62	College of Fine Arts
I 59-60	College of Music
C 65	College of Natural Sciences
I 67, 67-1	Graduate School of Public Administration
I 69	College of Business Administration
I 87	Graduate School of Business
C 68	Administrative Building
H 69	Center for Teaching and Learning
C 47, 47-1	University Library
C 40	Student Center
B 44	BK Communication Center
G 45	Faculty Club
B 47	Dare Cultural Center
O 47	Institute of Laboratory Animal Resources
I 70	University Museum
A 71	Gymnasium
A 71-1	Sports Education and Research Building
A 71-2	PDSOC Sports Complex
B 72	Law Library
C 73	University Cultural Center
I 74	Arts Education & Research Building
B 75	University Newspaper
D 75-1	Golfhouse
H 74	Golfhouse
A 80	Seonmyeong Medical Teaching Hospital
I 82	Graduate School of Environmental Studies
B 85	Multi-media Lecture Building II
B 84	Dentennial Building, College of Law
A 83	College of Veterinary Medicine
A 84	SNU Dental Hospital in Gwanak
A 87-88	Institute of Environmental Protection and Safety
O 100	Pyeongnan Outdoor Theater
B 101	Asia Center
C 100	Office of Information Systems and Technology
C 100	Kyungpook Architects
O 104	Inter-University Semiconductor Research Center
B 105	Institute for Molecular Biology & Design
H 107	Cafeviva Jahayin
H 111	LIBS
I 113	Dangwon Dining Hall
K 122	Faculty Apartments A-1
K 128-129	Hoam Faculty House
C 129	Sangju Mathematical Sciences Building
C 128-131, 133	College of Engineering
O 132-135, 138-139	

A 152	Office of International Affairs
A 152-1	Latin International Hall
A 153	Wangjagwon
B 289	College of Agriculture and Life Sciences
I 220	College of Liberal Studies
I 221	Graduate School of Public Health
I 222	College of Human Ecology
F 308	RIU (Ha Jin) Library
F 301-302	College of Engineering
F 310	Engineer House
F 311-314	College of Engineering
O 500	College of Natural Sciences
J 901-904, 910-904	Student Residence
M 101-105	
K 407-409	Global Student Residence
M 706	Staff Apartments
K 440	Research Park Building
K 441	Child Education Center
K 942-945	R&DB Centers
K 764	IM International House
K 950	International Vaccine Institute

- Under Construction
- A Gate to parking area
- B Open parking area
- C Bus stops
- D Airport Limousine
- E Roadway
- F Health care
- G Dining
- H Cafes

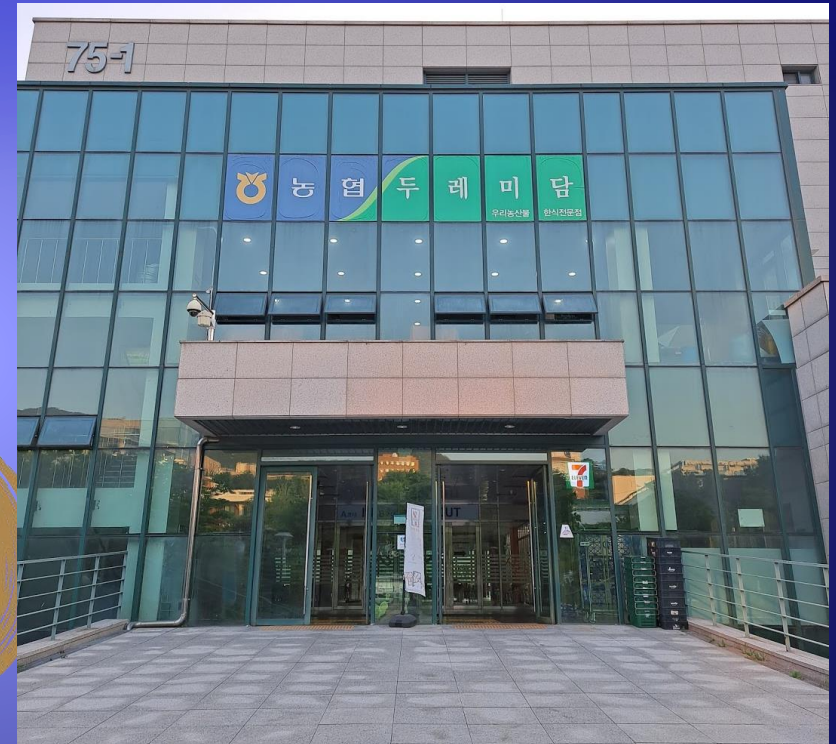


Lunch Places



Mon. & Fri.: building 38

Wed. & Thu.: 28



Tue.: building 75-1

- We provide a vegetarian diet,
if you have food allergies

Excursion (Kyungbokgung)



Excursion (Kyungbokgung)



Excursion (National Museum of Korea)



Banquet: FKI Plaza (50th Floor)



Safety & Travel

- Masks and self-diagnosis kits for Covid-19 are available
- A first aid box is also provided at the registration desk.
If you need help, please contact the registration desk,
otherwise nufact23@gmail.com, phone: 070-7601-4610
- Emergency service: call 119
- Travel:
 - In Seoul, better to use public transportation (cheap),
and the travel card we provided

Working Group Conveners

WG1: Neutrino Oscillations

Adam Aurisano (University of Cincinnati, USA)
Jian Tang (Sun Yat-Sen University, China)
Mark Scott (Imperial College, UK)

WG2: Neutrino Scattering Physics

Raul Gonzalez-Jimenez (Imperial College, UK)
Elena Gramellini (University of Manchester, UK)
Christophe Bronner (IPMU University of Tokyo, Japan)

WG3: Accelerator Physics

Katsuya Yonehara (Fermi National Accelerator Laboratory, USA)
Natalia Milas (ESS, Sweden)
Megan Friend (KEK, Japan)

WG4: Muon Physics

Yuki Fujii (Monash University, Australia)
Gavin Hesketh (London's Global University UCL, UK)
Simon Corrodi (ANL, USA)

WG5: Neutrinos beyond PMNS

Ian Shoemaker (Virginia Tech., USA)
Koun Choi (Institution for Basic Science, Korea)
Julia Harz (Johannes Gutenberg University Mainz, Germany)

WG6: Detector Physics

Davide Sgalaberna (Eidgenössische Technische Hochschule Zürich, Switzerland)
Nishimura Yasuhiro (Keio University, Japan)
Jonathan Asaadi (University of Texas at Arlington, USA)

WG7: Inclusion, Diversity, Equity, Education, and Outreach

Ellen Bechtol (University of Wisconsin at Madison, USA)
Francesca Dordei (INFN Cagliari, Italy)
Nagisa Hiroshima (University of Toyama, Japan)

SPC

SCIENTIFIC PROGRAM COMMITTEE

Sanjib Agarwalla (Institute of Physics, Bhubaneswar, India)
Alain Blondel (University of Geneva, Switzerland)
Adi Ashkenzi (Tel Aviv University, Israel)
Walter Bonivento (INFN Cagliari, Italy)
Stefania Bordoni (Université de Genève, Switzerland)
Alan Bross (FNAL, USA)
Albert De Roeck (CERN, Switzerland)
Neil McCauley (Liverpool, UK)
Chris Densham (STFC, UK)
Yuri Oksuzian (Argonne National Laboratory, USA)
Danny Marfatia (University of Hawaii, USA)
Francesca Di Lodovico (Queen Mary University of London, UK)
Frederik Wauters (Mainz, Germany)
Marcos Dracos (IN2P3, France)
Yuri Oksuzian (Argonne National Laboratory, USA)
Tord Ekelöf (Uppsala University, Sweden)
Maury Goodman (ANL, USA)
Mamad Eshraqi (ESS, Sweden)
Craig Group (University of Virginia, USA)
Natalie Jachowicz (University of Gent, Belgium)
Deborah Harris (FNAL/York University, USA)
Patrick Huber (Virginia Tech., USA)
Ernesto Kemp (UNICAMP, Brazil)
Yoshitaka Kuno (Osaka University, Japan)
Marco Martini (IPSA and Sorbonne Université, France)
Jorge Morfin (FNAL, USA)
Jianmin Biam (UC Irvine, USA)

Helio da Motta (CBPF, Brasil)
Miao He (IHEP, China)
MyeongJae Lee (Sung Kyun Kwan University, Korea)
Albert De Roeck (CERN, Switzerland)
Angela Papa (PSI/UniPi/INFN, Switzerland)
Paul Soler (University of Glasgow, UK)
Francesco Terranova (University of Mulano-Bicocca, Italy)
Un-ki Yang (Seoul National University, Korea)
Carten Rott (University of Utah, USA)
Jonghee Yoo (Seoul National University, Korea)

LOC: Thank You

LOCAL ORGANIZING COMMITTEE

Jonghee Yoo (Co-Chair, Program, Seoul National University)
Kyungkwang Joo (Co-Chair, Finance, Chonnam National University)
Un-Ki Yang (General Local Adviser, Seoul National University)
Sunho Choi (Local Adviser, Seoul National University)
Hongjoo Kim (Local Adviser, Kyungpook National University)
Kiwoon Choi (Local Adviser, Institute for Basic Science)
Youngduk Kim (Local Adviser, Institute for Basic Science)
Intae Yu (Local Adviser, Sungkyunkwan University)
Jungsic Park (General Secretary, Kyungpook National University)
Byeongsu Yang (Financial Management, Seoul National University)
Siyeon Kim (Scientific Operation Management, Chung-Ang University)
Hyunsoo Kim (Communication Management, Sejong University)
Junghwan Goh (Online Management, Kyunghee University)
Jeeseung Jang (Promotion Management, Gwangju Institute for Science and Technology)
Inkyu Park (LOC, University of Seoul)
Myoung-Youl Pac (LOC, Dongshin University)
Jaesik Lee (LOC, Chonnam National University)
Eunjoo Kim (LOC, Jeonbuk National University)
Dongho Moon (LOC, Chonnam National University)
Kyujung Bae (LOC, Kyungpook National University)
Jik Lee (LOC, Kyungpook National University)
Sanghyun Chang (LOC, Institute for Basic Science)
Sang Hui Im (LOC, Institute for Basic Science)
Tae Hyun Jeong (LOC, Institute for Basic Science)
Seokhoon Yun (LOC, Institute for Basic Science)
Chang-Seong Moon (LOC, Kyungpook National University)
Sunghoon Jung (LOC, Seoul National University)

Han Il Jang (LOC, Seoyeong University)
Hyun Su Lee (LOC, Institute for Basic Science)
Jason Lee (LOC, Institute for Basic Science)
Sunny Seo (LOC, Institute for Basic Science)
Yumin Oh (LOC, Institute for Basic Science)
Shin Kyu Kang (LOC, Seoul National University of Science and Technology)
Yu Seon Jeong (LOC, Chung-Ang University)
Chang Hyon Ha (LOC, Chung-Ang University)
Hyun Min Lee (LOC, Chung-Ang University)

Supports

➤ Host



➤ Supporting Institutes

