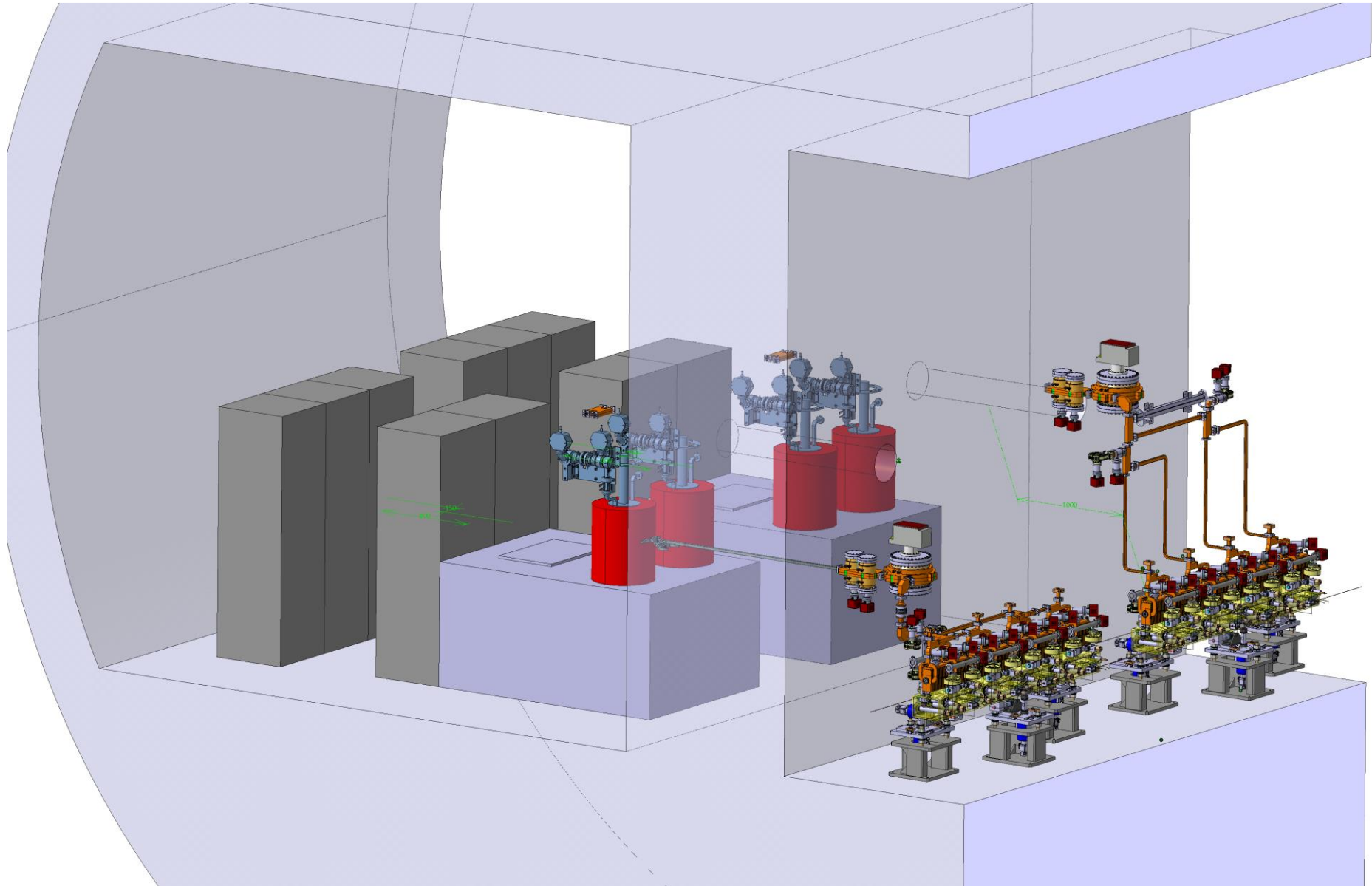
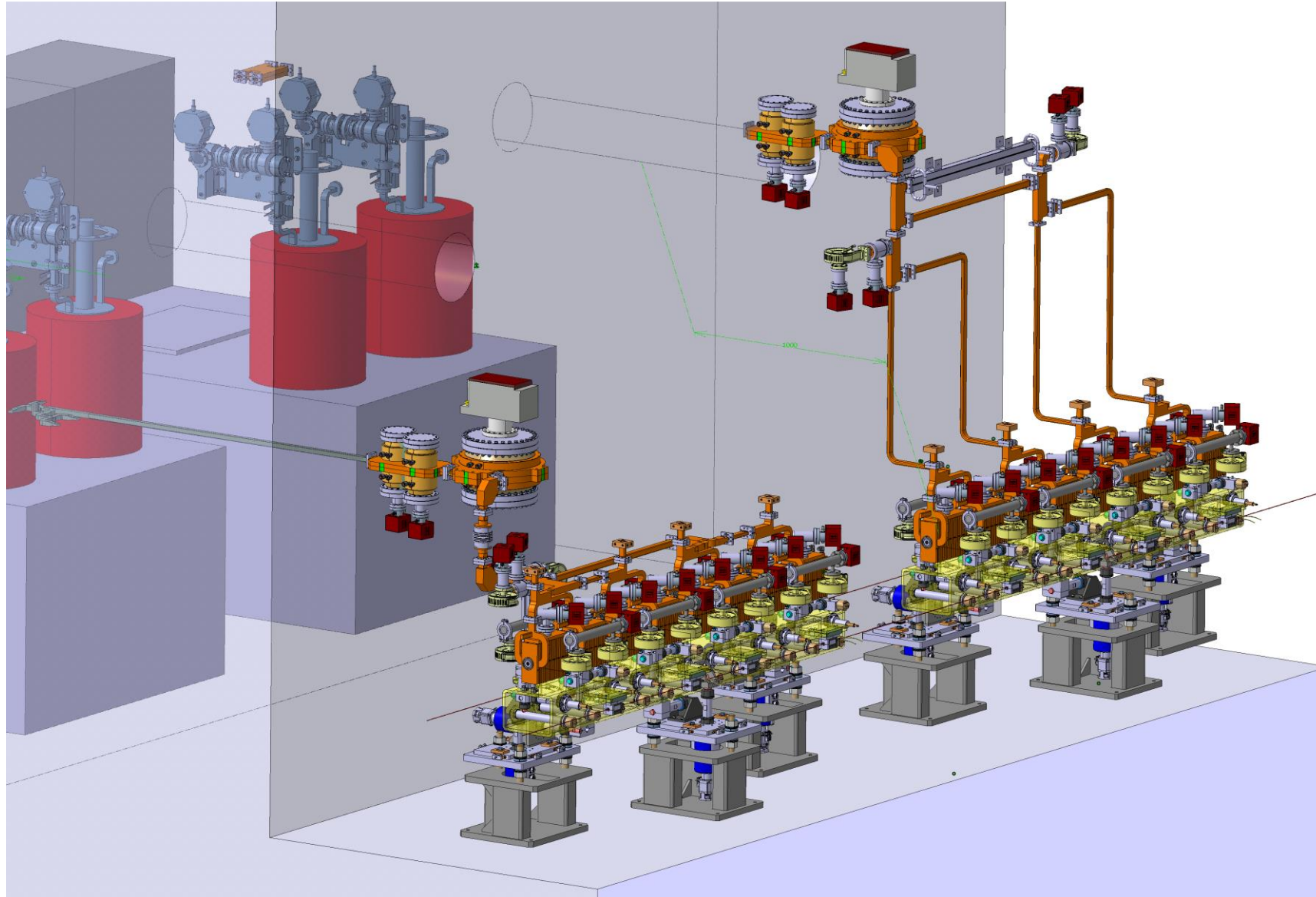


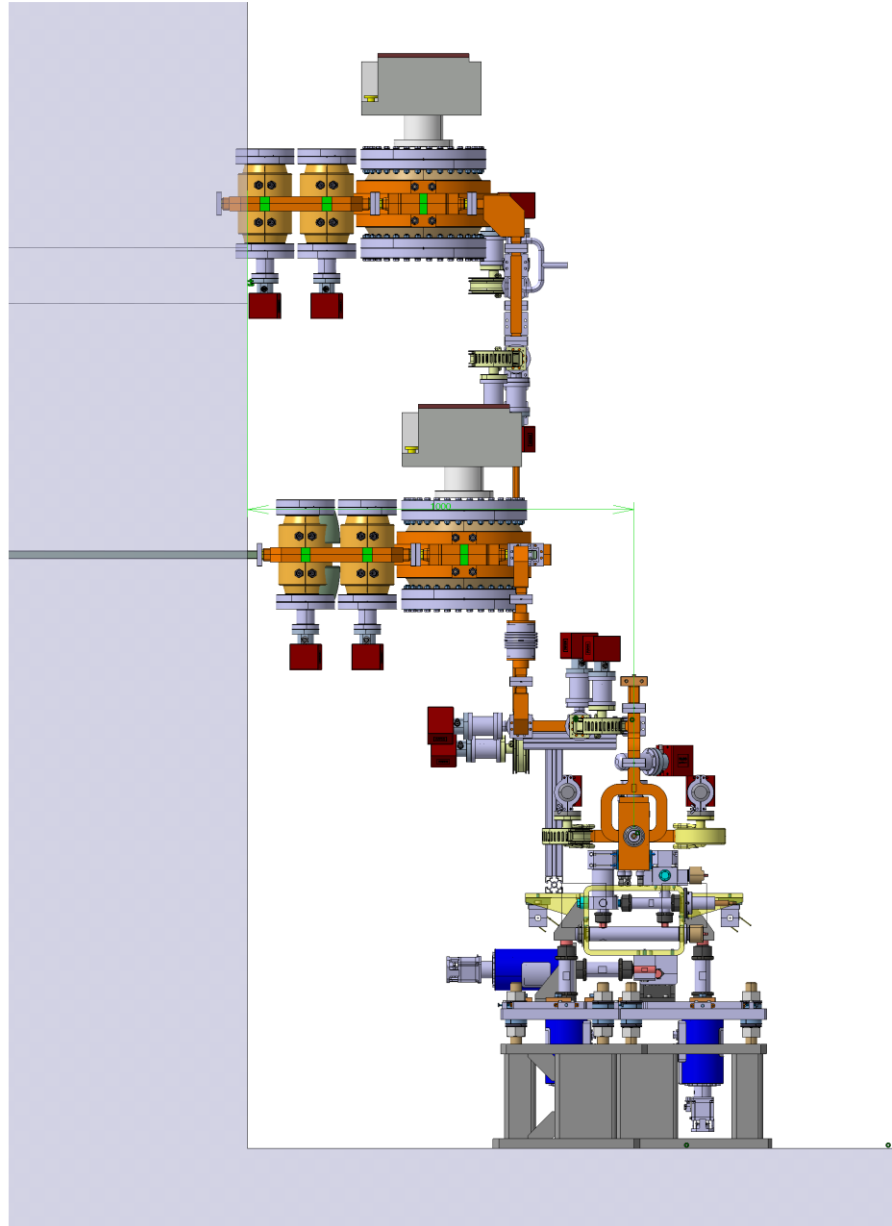
Klystron Tunnel Layouts

13-09-2023





- 1m from the wall
- Waveguide heights:
 - 2.445m
 - 1.537m
- L waveguide flexibility matches the range of the choke mode flange



- 1m from the wall
- Waveguide heights:
 - 2.445m
 - 1.537m
- L waveguide flexibility matches the range of the choke mode flange

