

SPS status

- SPS availability since last Thursday: 88.4%; main faults:
 - few hours over the week: injector complex (esp. LEIR and LN3 RF)
 - 3h Wed. mo.: false trigger of BA3 fire alarm, access and patrol
- beams
 - SFTION ok since last Wednesday
 - AWAKE: 1-2-3e11 ppb provided
 - reduced availability on Sunday due to frequent LHC fills
 - LHC: physics and last MDs
- last SPS MDs of the year
 - short parallel on Mon. (and 3 hours Tue.: thanks!!!)
 - unfortunately long parallel on Wed. to study limitations for LHC protons beams in 2023 could not be completed due to equipment installation problem
 - stopped early to continue on Fri. 25, ideally after access to fix installation
 - **request for beam stop on Fri. 25 from 8:00-9:00 (30' cool-down + 30' access)**
 - then recuperate LHCMD1 measurements (9:00-10:00)
 - discussion for approval foreseen Thu afternoon

Availability

88.4%

Blocking Faults

86

Total Faults

86

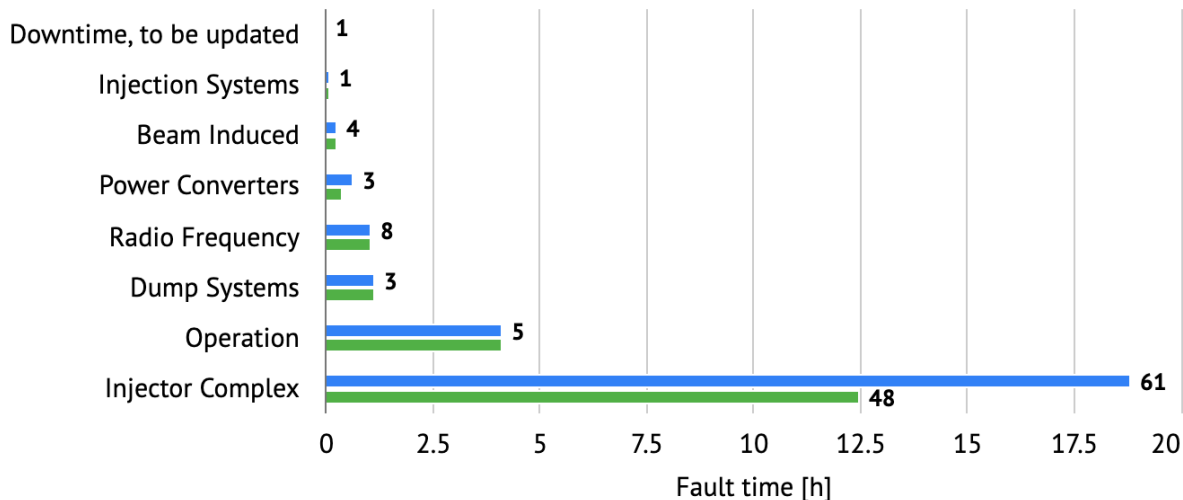
Fault Duration (overlap excluded)

19.5h

Faults by Root Cause

Faults by Root Cause

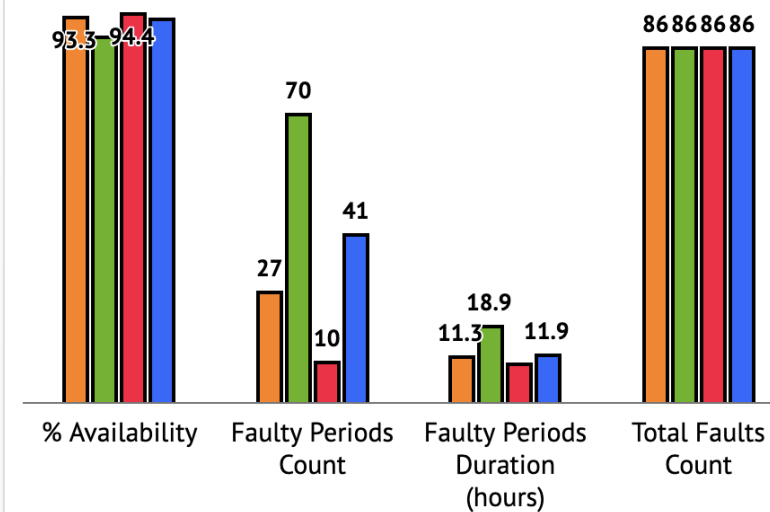
- Raw (includes faults in shadows and child faults)
- Root Cause (child faults assigned to parent systems, time in shadow removed)



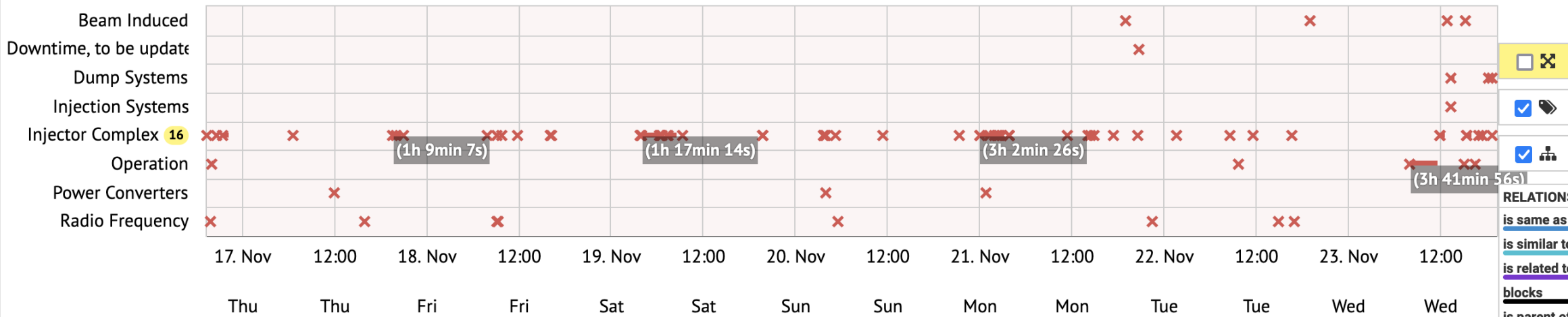
Destination Availability

Destination Availability

- AWAKE
- FTARGET
- HIRADMAT
- LHC



Faults Timeline by System



RELATIONS

- is same as
- is similar to
- is related to
- blocks
- is parent of