

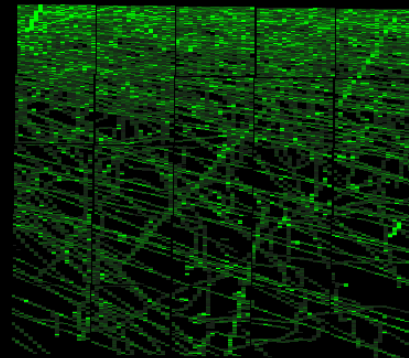
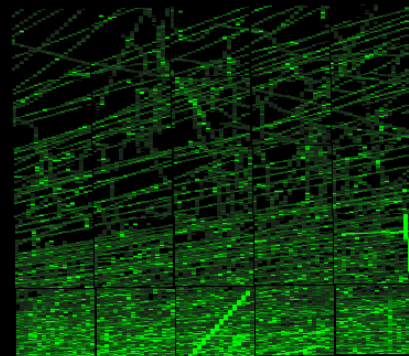
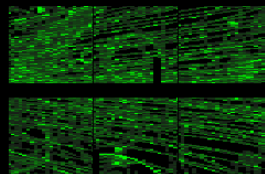
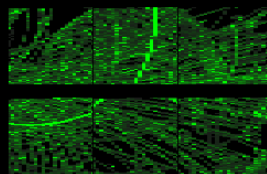
NA61/SHINE report

Piotr Podlaski

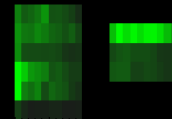
Data taking status

- We successfully finished commissioning of the NA61/SHINE detector with high intensity Pb beam
- Since Monday evening we are collecting physics data
- Up until now we accumulated 27M Pb+Pb events
- We are happy with the quality of the beam we are receiving

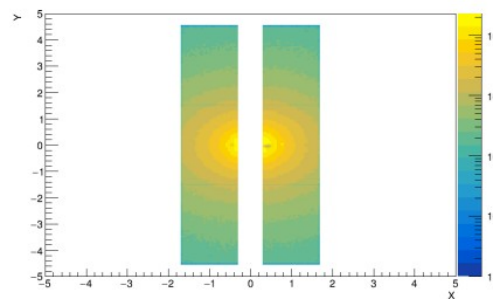
Run 41714 Event 25000 2022-11-21T11:01:41.834536192Z (UTC), 1353063719:8.34536e+08 (GPS), Unix:1669028501s,8.34536e+08ns



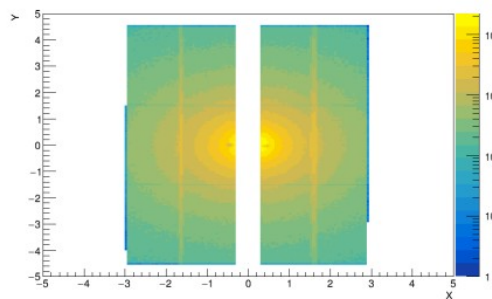
##



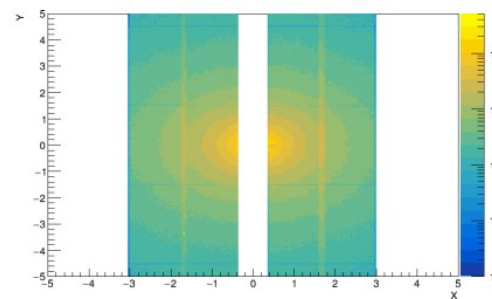
Clusters @ station #1, T1 Events



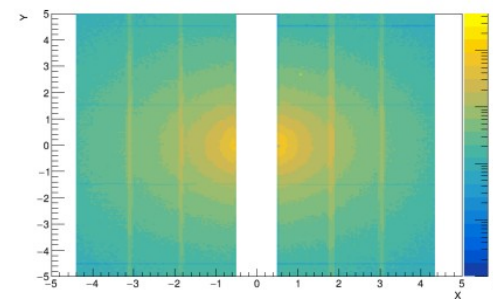
Clusters @ station #2, T1 Events



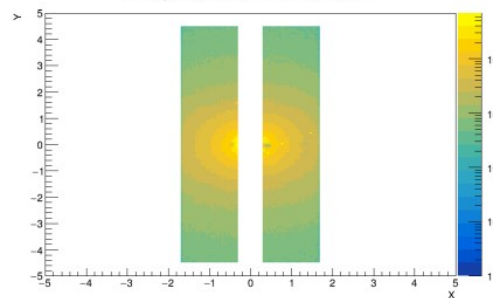
Clusters @ station #3, T1 Events



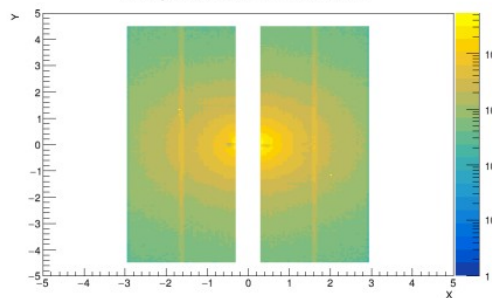
Clusters @ station #4, T1 Events



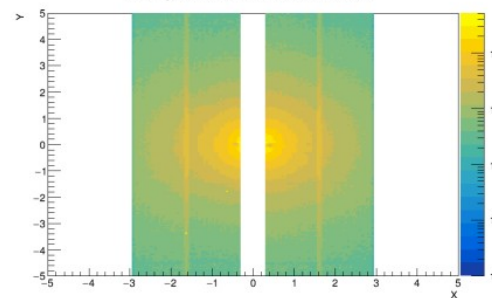
Fired pixels @ station #1, T1 Events



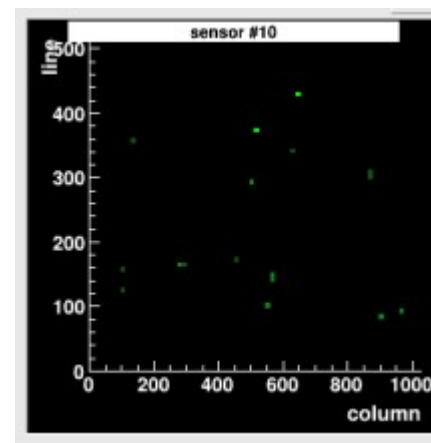
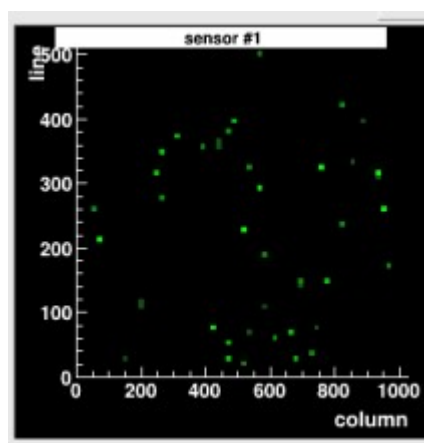
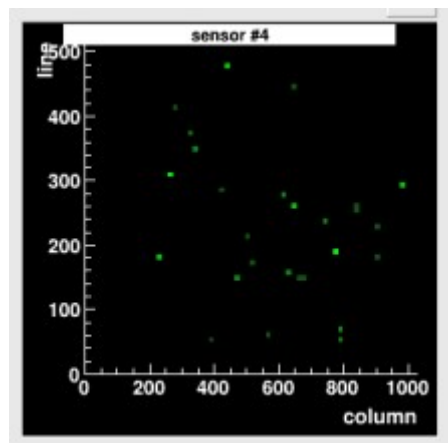
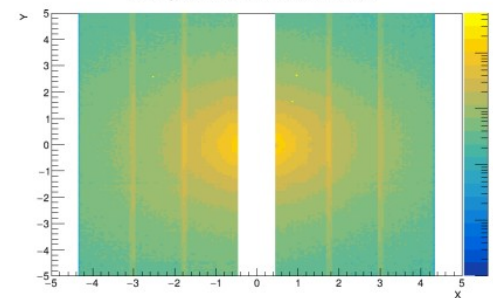
Fired pixels @ station #2, T1 Events



Fired pixels @ station #3, T1 Events



Fired pixels @ station #4, T1 Events



Thank you