

PSD13

St. Catherine's College
September 3-8, 2023

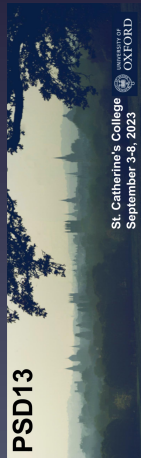


UNIVERSITY OF
OXFORD

Final thoughts

08/09/2023

D. Bortoletto

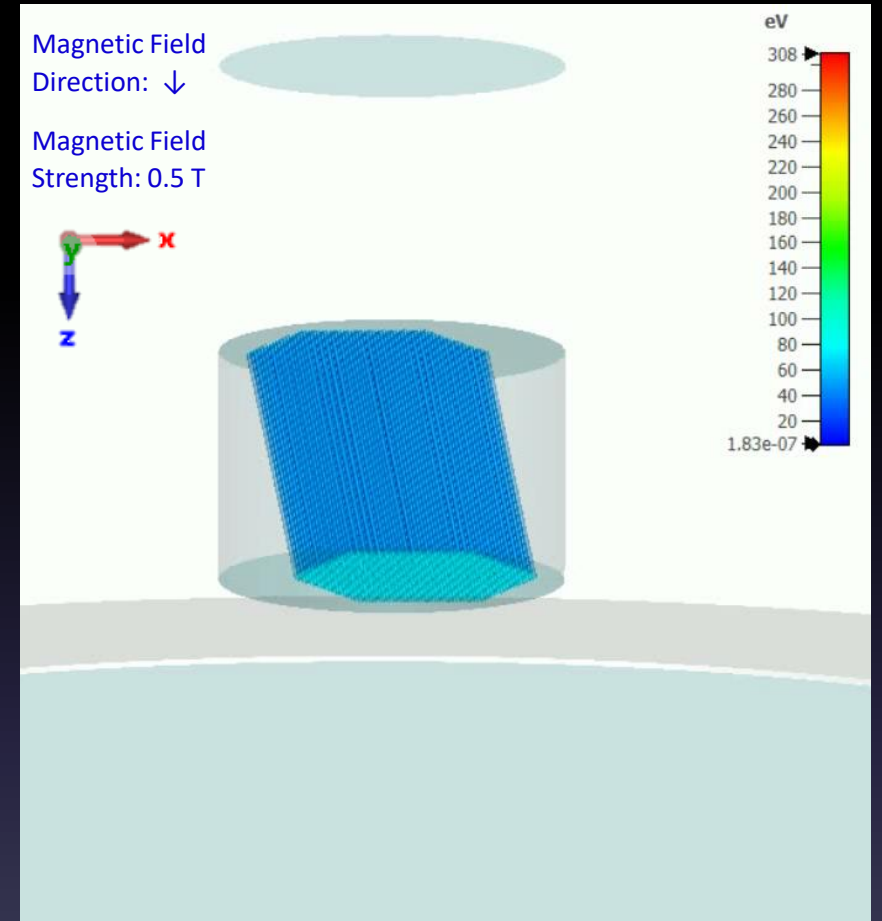


Poster competition winner (I)



Summary

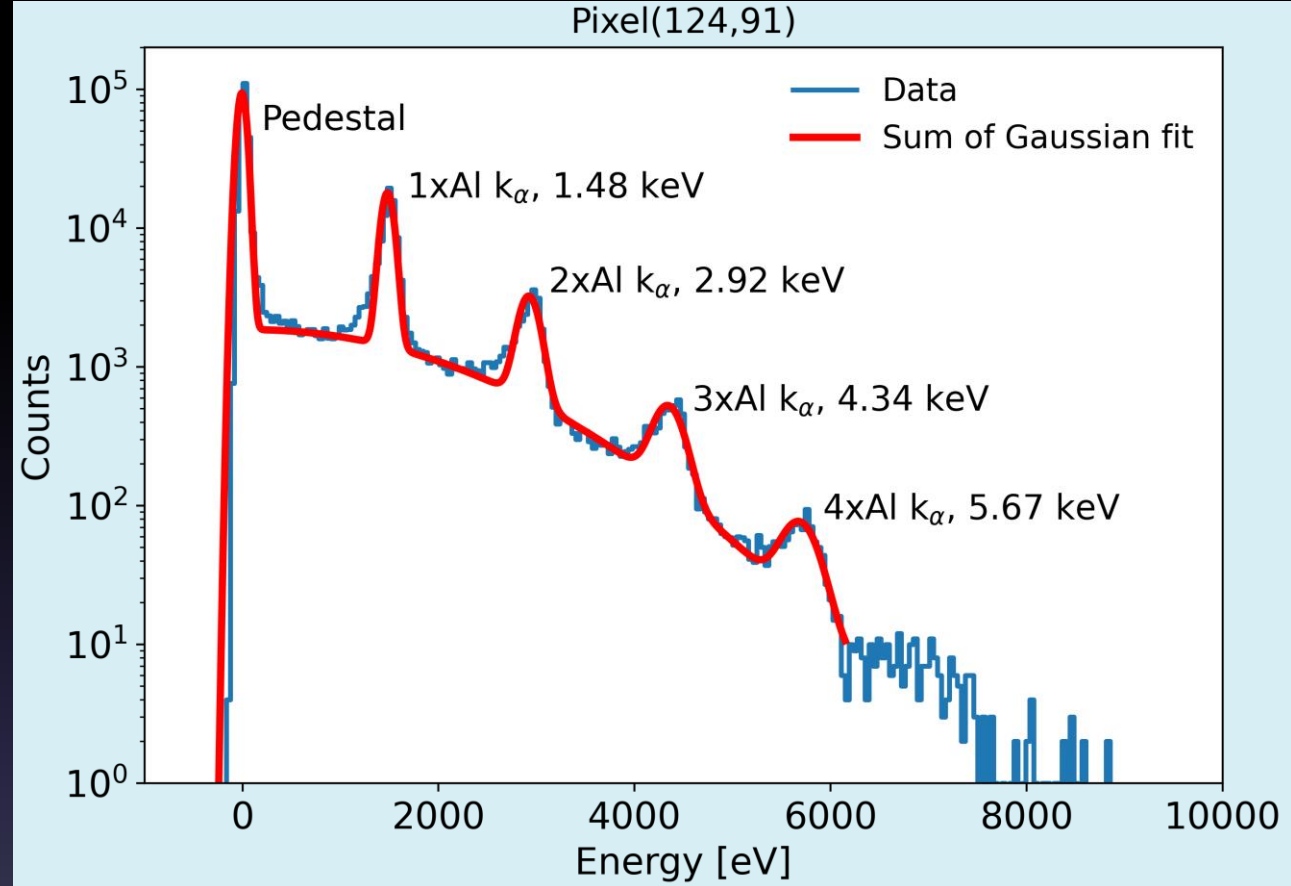
- MCP-PMT simulation produced using CST Studio Suite
- 919 pores simulated, 25 incident photons
- Uniform magnetic fields applied in different directions, with different field strengths
- Gain, timing and spatial performance are produced



Emily Baldwin

Simulating Performance of Microchannel Plate Photomultipliers in Magnetic Fields

Poster competition winner (II)



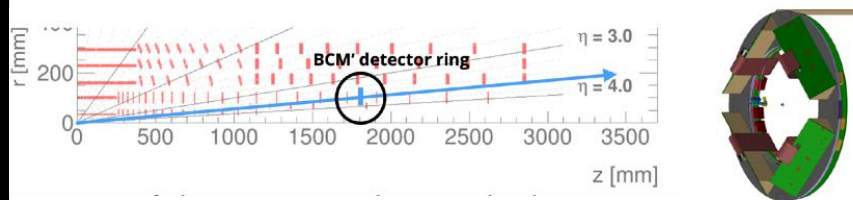
Ibrahim Dourki

Experimental investigation of the imaging capabilities of a DEPFET ladder of the DSSC X-ray camera at the European XFEL

Poster competition winner (III)

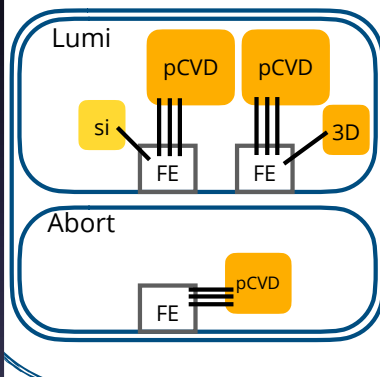


BCM' ring inside ITk detector and ring schematic.

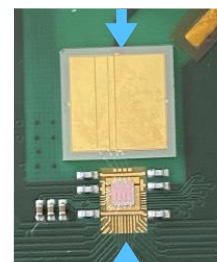


ToF measurements for abort functionality and event counting for luminosity.

Detector station schema:



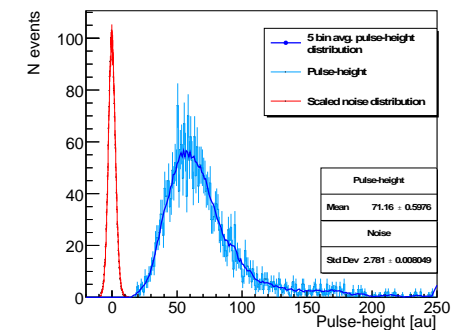
pCVD diamond sensor.



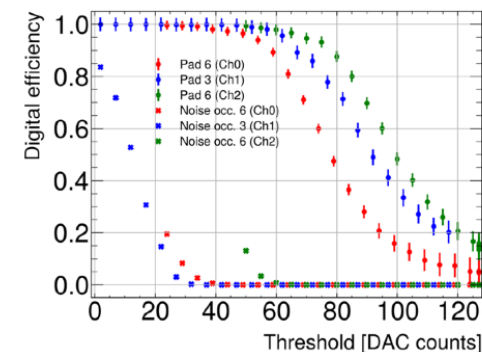
Rad-hard Calypso FE ASIC.

CERN SPS test beams:

▶ Analog output spectrum and S/N



▶ Threshold scan of LVDS outputs



Miha Mali

Development of the BCM system for beam abort and luminosity monitoring in ATLAS based on a segmented polycrystalline CVD diamond system and dedicated front-end ASIC

Proceedings

- Published by NIM A
- Submission Open Date: 10/09/2023
- Instructions will appear shortly on our web site
 - Keynote presentation: 6 pages
 - Talk: 4 pages
 - Posters: 3 pages

08/09/2023

PSD14 in 2026



PSD14 bid



Peter Hobson, Professor of Physics
School of Physical and Chemical Sciences

Last revised 6/9//2023

08/09/2023

PSD14

- Queen Mary University of London
- A research intensive university: 33000 students and 5400 staff
- Three Faculties:
 - Science and Engineering
 - Medicine and Dentistry
 - Humanities and Social Sciences
- Five campuses in East/Central London:
 - **MileEnd**
 - Whitechapel
 - West Smithfield
 - Charterhouse Square
 - Lincolns Inn

08/09/2023



- Compact campus with excellent connections to Central London and Airports
- Close to Liverpool St station
- Mile End tube station - 7 minutes walk from campus
- Quick connections to Elizabeth Line which runs to Reading & Heathrow in the West.

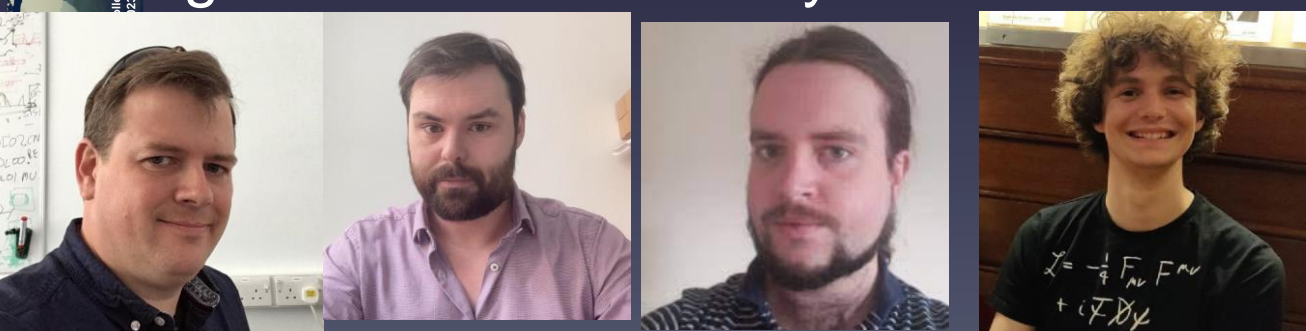
Many thanks

- The support of Sue Geddes and the excellent team at Catz (especially Belinda, Fatima,.....)

The excellent work of the Local, National, and International organizing committees

- The speaker and the poster presenters

The OPMD team who gave you a great visit of our facility



International Advisory Committee

- Anna Bergamaschi, PSI, Switzerland
- Michael Campbell, CERN, Switzerland
- Gabriella Carini, BNL, USA
- Simon Cherry, University of California, Davis, USA
- Maurice Garcia-Sciveres, LBNL, USA
- Heinz Graafsma, DESY, Germany
- Ingrid Gregor, DESY, Germany
- Masashi Hazumi, KEK, Japan
- Jim Hinton, MPI, Germany
- Petra Merkel, Fermilab, USA
- Emilio Radicioni, INFN, Italy
- Petra Riedler, CERN, Switzerland
- Reinhard Schulte, Loma Linda University, USA
- Geoffrey Taylor, University of Melbourne, Australia
- Yoshinobu Unno, KEK, Japan
- Hongbo Zhu, IHEP, China

National Organizing Committee

- Phil Allport, University of Birmingham
- Richard Bates, University of Glasgow
- Helen Boston, University of Liverpool
- Daniela Bortoletto, University of Oxford
- Dimitra Darambara, ICR, London
- Cinzia Da Via, University of Manchester
- David Hall, The Open University
- Peter Hobson, Queen Mary University of London
- Simon Jolly, University College London
- Jon Lapington, University of Leicester
- Alessandro Olivo, University College London
- Paul Sellin, University of Surrey
- David Smith, Brunel University London
- Konstantin Stefanov, The Open University
- Marcello Borri, STFC UKRI
- David Omar, Diamond Light Source

Local Organizing Committee

- Daniela Bortoletto, University of Oxford
- Marcus French, RAL
- Daniel Hynds, University of Oxford
- Richard Plackett, University of Oxford
- Iain Sedgwick, RAL
- Ian Shipsey, University of Oxford
- Daniel Weatherill, University of Oxford
- Sue Geddes, University of Oxford
- St. Catz conferences

Have a safe trip home!



PSD13

PSD13

PSD13

St. Catherine's College
September 3-8, 2023

St. Catherine's College
September 3-8, 2023

St. Catherine's College
September 3-8, 2023

08/09/2023