

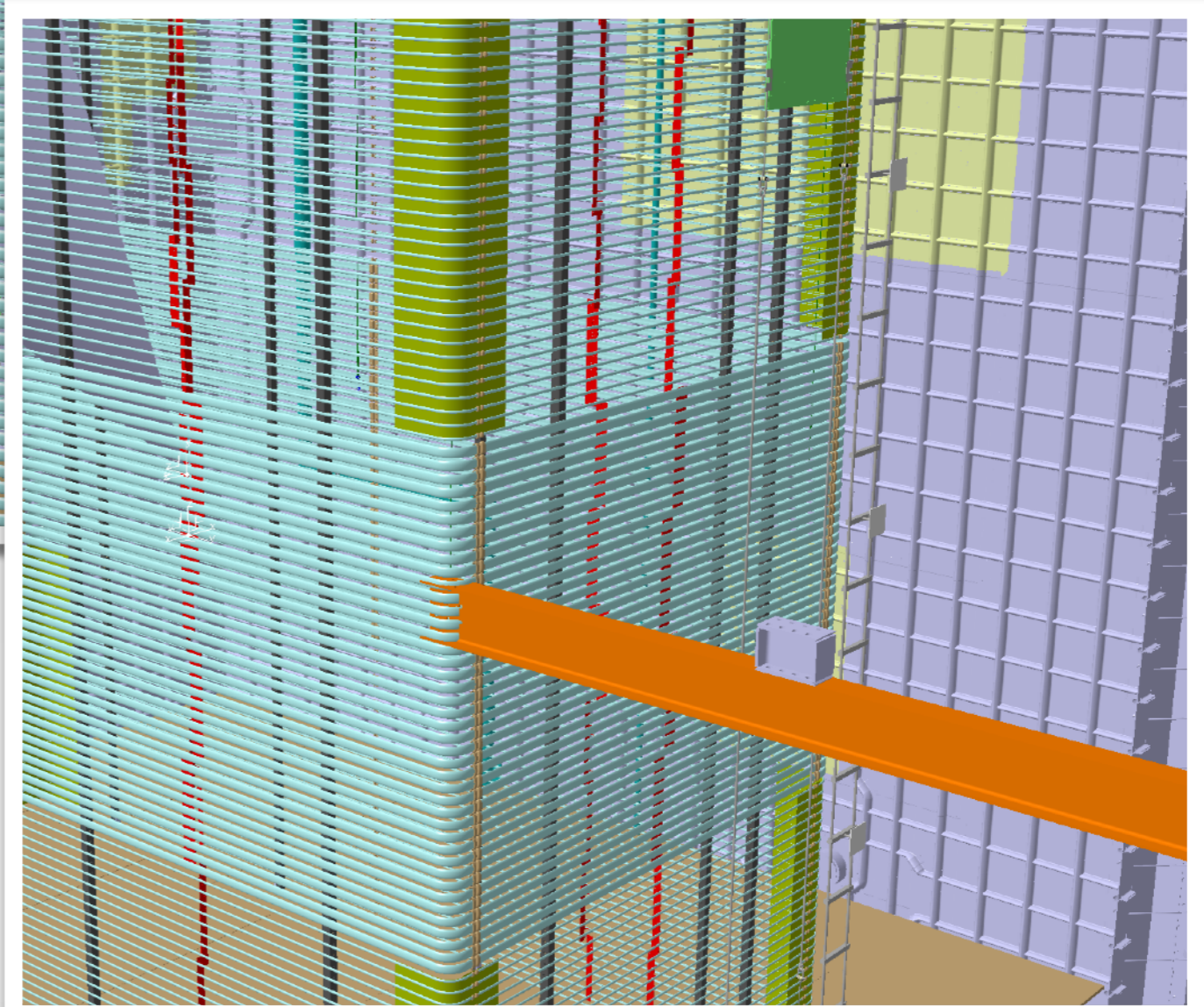
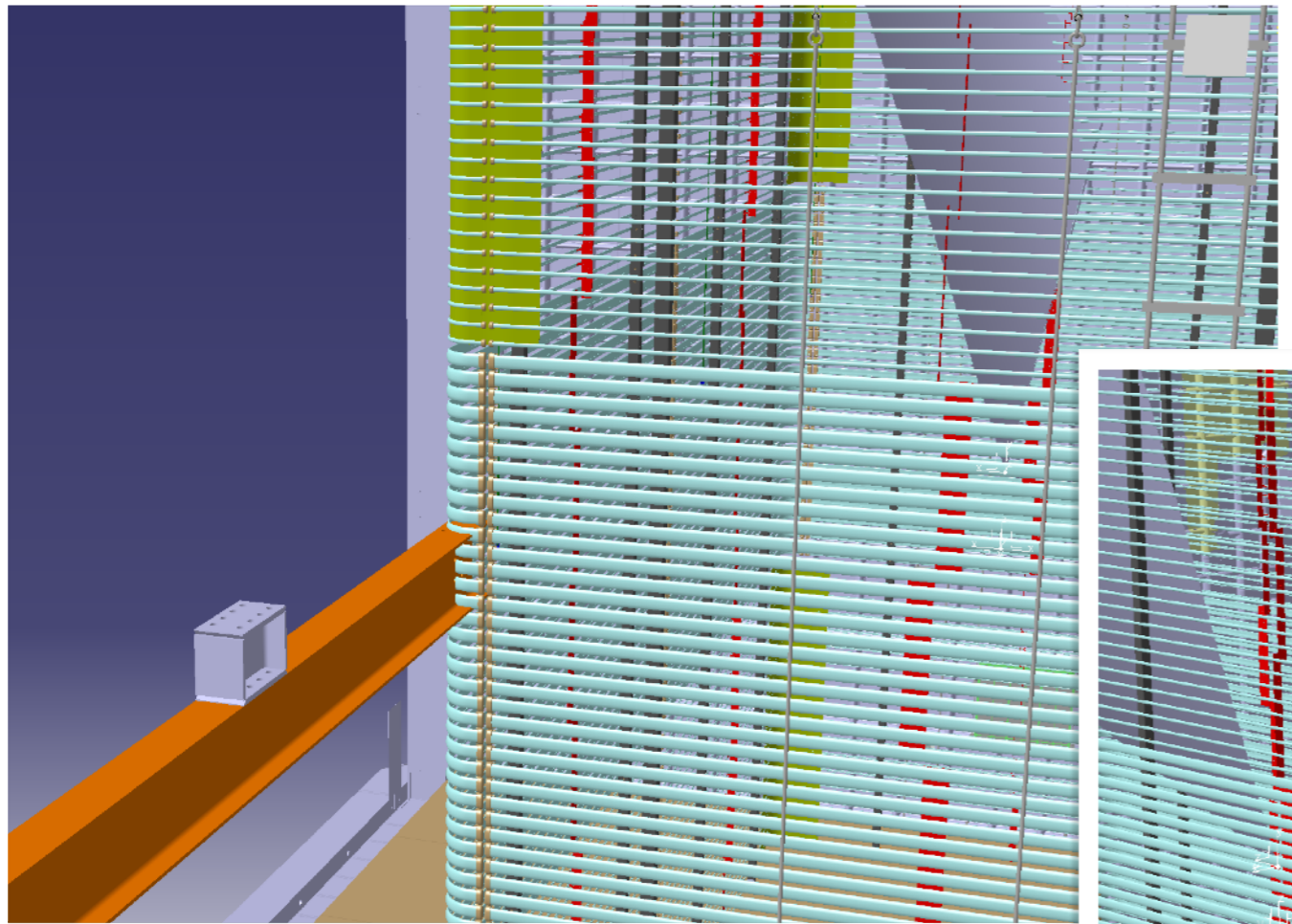
Thoughts on new installation sequence

Filippo Resnati

Installation sequence

- * Field cage support structures and TDE Cables
- * Top CRP supports
- ~ Top CRP upstream with cathode wires
- Support for PD on the walls and top PD modules including cables
- Top CRP downstream with cathode wires
- Install upstream cathode module
- Install cable trays for test on TCO wall
- Install second cathode module
- Temperature sensors with optical fibres?
- Route optical fibres (need a way to protect them before the field cage is complete)
- Install 2/3 of the the field cage except for 2 walls near the TCO
- Install HV extender
- Install vertical cable trays and CE flange?
- Bring in bottom CRPs
- Complete 2/3 of field cage and connect to cathode (beam extension issue)
- Position bottom CRPs (how?)
- Rout the cables the bottom CRPs
- Internal cryo pipes, if not done before the CRPs
- Complete field cage (bottom 1/3 goes up?)
- Remove man lifts and TCO beam
- Beam plug and CALCI

TCO beam conflict



Bottom CRPs on the floor

