

Visitor Information Guide

Site access

There are measures in place to control site access in response to COVID-19. All employees, users, contractors, sub-contractors, volunteers and students accessing site are required to self-screen for COVID-19 symptoms before coming to site using the [Ontario Government COVID-19 self-assessment tool](#). KN95 masks are available for use at SNOLAB. If you are sick please refrain from visiting site.

Travel Directions to SNOLAB from Sudbury (See ROUTE on Pg. 4)

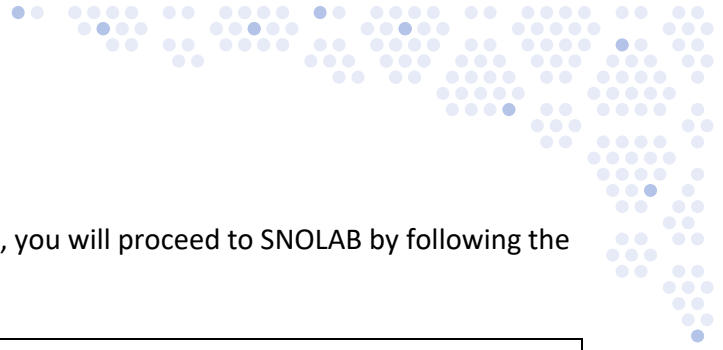
- Long Lake road - exit right at the HWY 17 WEST exit
- Follow the (Hwy 17 WEST) toward Sault Ste. Marie
- Exit at Hwy 55 West - Lively (at the overpass)
- Go through 1 set of lights
- Turn right onto Regional Road 24 - Lively
- You will travel through Walden and Lively (5.3km)
- Turn right on the ramp at the Creighton Mine sign (McNaughton St.)
- Follow the road for approximately 3km
- Park in the main Creighton Parking lot. The entrance is located on your left-hand side.
- **OBEY** all speed limits and road signs while on Vale property.

Parking

Visitors to SNOLAB must park at the main Vale-Creighton Mine lot. The entrance is on your left-hand side as you drive in before the security gate.

Signing In

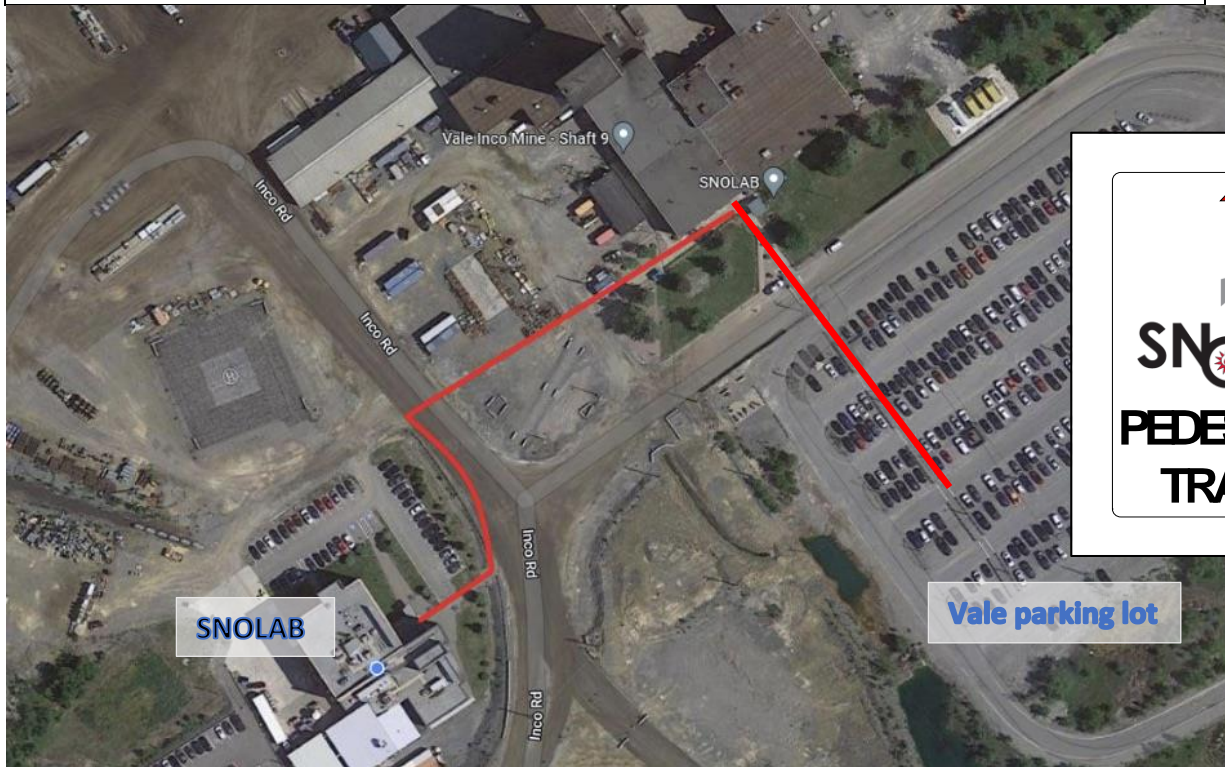
All Visitors coming to SNOLAB must stop at the Vale Security Office and sign-in to the Vale Surface Visitor Log Book. You must enter through the turnstiles and must not by-pass them. Please have your site contact assist with accessing site.



Walking from Vale Parking Lot to SNOLAB

After you park and sign-in at Vale Security Office, you will proceed to SNOLAB by following the SNOLAB Pedestrian Traffic signs.

Do not walk under the security gate or on any roads. Stay on the designated walking path.



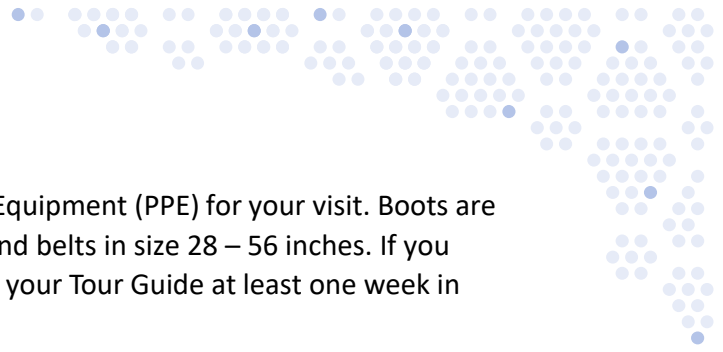
What to Wear

The underground environment is warm and humid. It is suggested that you wear a t-shirt and shorts underneath your mine gear. It is also suggested that you wear comfortable, thick socks. If you have long hair, it must be tied into a ponytail and tucked into your coveralls or under your hardhat.

What to Bring

Lockers are available in the surface change rooms. Do not bring any valuables with you when entering the SNOLAB surface building. If you have special dietary considerations or require medications (e.g. Epinephrine Pens) please make sure that your Tour Guide is aware, but you are responsible for carrying these items with you. Items that need to come into the clean lab with you must be tied and double-wrapped in plastic bags (provided). Your tour guide can help you with this process.

You will be provided clothing and PPE for visiting the underground clean lab.



Mine Gear

SNOLAB will provide all the Personal Protective Equipment (PPE) for your visit. Boots are available in size 4 -12; coveralls in size 38 – 64; and belts in size 28 – 56 inches. If you require PPE outside of this range, please contact your Tour Guide at least one week in advance to accommodate your needs.

PPE is mandatory to enter the mine. Vale/Creighton reserves the right to limit your access underground if you do not have the proper equipment.

Physical Fitness

Visitors must be physically fit enough to handle the complete tour. This includes a 1.4 kilometre walk in and out of the mine drift on uneven terrain; AND must be able to scale a 50-foot ladder in case of an emergency evacuation. Visitors with casts or dressings on significant wounds are not permitted underground.

If your Tour Guide or Vale representative does not feel you meet the requirements, or you have demonstrated a failure to follow instructions you will not be permitted underground.

Cameras & Radio Frequency Emitting Devices

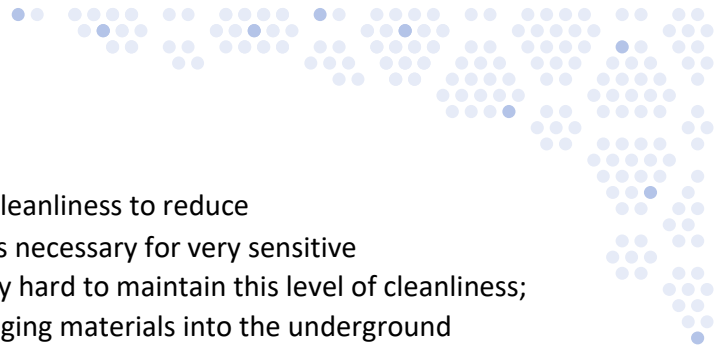
Cameras are permitted in the SNOLAB surface building and in the underground laboratory. Pictures are NOT to be taken while on Vale property, this includes the Vale building, cap lamp room and while on the cage. Your Tour Guide will let you know when you can take pictures while underground. RF emitting devices are not allowed on Vale property.

Cell Phones

Cell phones and/or wireless communication devices are only permitted underground for a tour and only to be used as a camera. All phones must be placed in airplane mode and verified by your tour guide before you leave the SNOLAB surface building.

Medical Conditions

If you have a medical condition that may affect you while on the tour, please let your Tour Guide know in advance of the tour (this includes cold, flu and seasonal allergies). If you require medications or other supplies, you are required to carry these with you while on the tour, but you must inform your Tour Guide before the tour.



Cleanliness

SNOLAB experiments require extreme levels of cleanliness to reduce environmental radiological backgrounds to levels necessary for very sensitive measurements. The staff and scientists work very hard to maintain this level of cleanliness; as a result, there are very stringent rules for bringing materials into the underground laboratories. Your SNOLAB Tour Guide will assist you through the cleanliness procedures, particularly the shower and change of clothing process required to maintain lab cleanliness.

Showers

When you reach the underground laboratory, each visitor is required to go through the SNOLAB multi-step cleaning process. This requires everyone to remove their mine gear and clothing that was worn underneath and must have a shower that includes washing your hair.

The change rooms (male and female) are arranged in a similar fashion to a gym change room; the showers are enclosed however; the room is open. The change rooms are divided in to 'clean' and 'dirty' areas - after the shower, you are considered clean and cannot pass back onto the dirty side without having another shower.

The clothing that you wore under your mine gear must stay on the 'dirty' side. You will be provided with clean room clothing as soon as you exit the shower (T-shirt, clean room coveralls, socks, boots, hairnet and clean safety glasses).

SNOLAB Tour Guides will do their best to make sure everyone is comfortable in this situation; however, cleanliness protocols cannot be compromised. If you feel

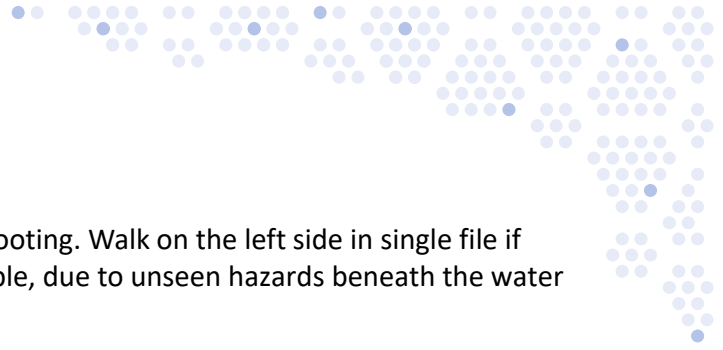
that you will not be comfortable in this situation or require further clarification of the process, please contact your Tour Guide or SNOLAB in advance.

The shower cannot be bypassed for any reason.

Pressurization

Traveling underground puts about 25-30 percent (%) more pressure on your body and will result in you feeling fatigued.

Changes in air pressure can cause ear-drum pain and perforation, vertigo, and hearing loss. If you experience these symptoms when flying, please let your Tour Guide know before getting on the cage.



Safety Practices:

In the Drift: The ground is uneven. Watch your footing. Walk on the left side in single file if possible. Avoid walking through puddles if possible, due to unseen hazards beneath the water surface.

Eyewear: Contact lenses are not permitted. If you require your personal corrective eyeglasses and they are not safety rated c/w side shields, you must wear a pair of approved safety glasses over your own.

Supervision: All visitors must remain under the supervision of their tour guide at all times.

Banned products: Please note that all *shellfish products* are banned from all SNOLAB surface and underground areas.

For More Information

SNOLAB website: www.snolab.ca

SNOLAB Senior Education and Outreach Officer

blaire.flynn@snolab.ca

705-692-7000 x 2806

