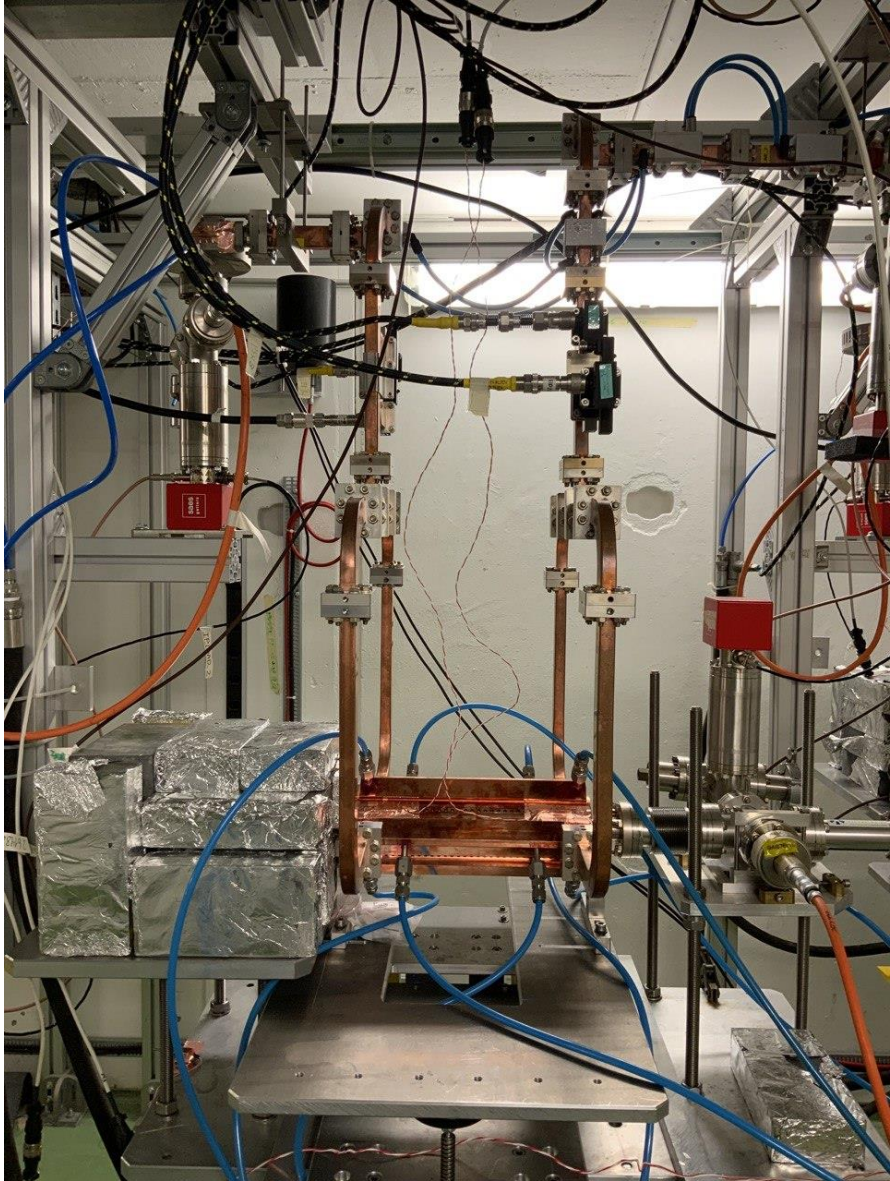


Xboxes Update

01/02/2023

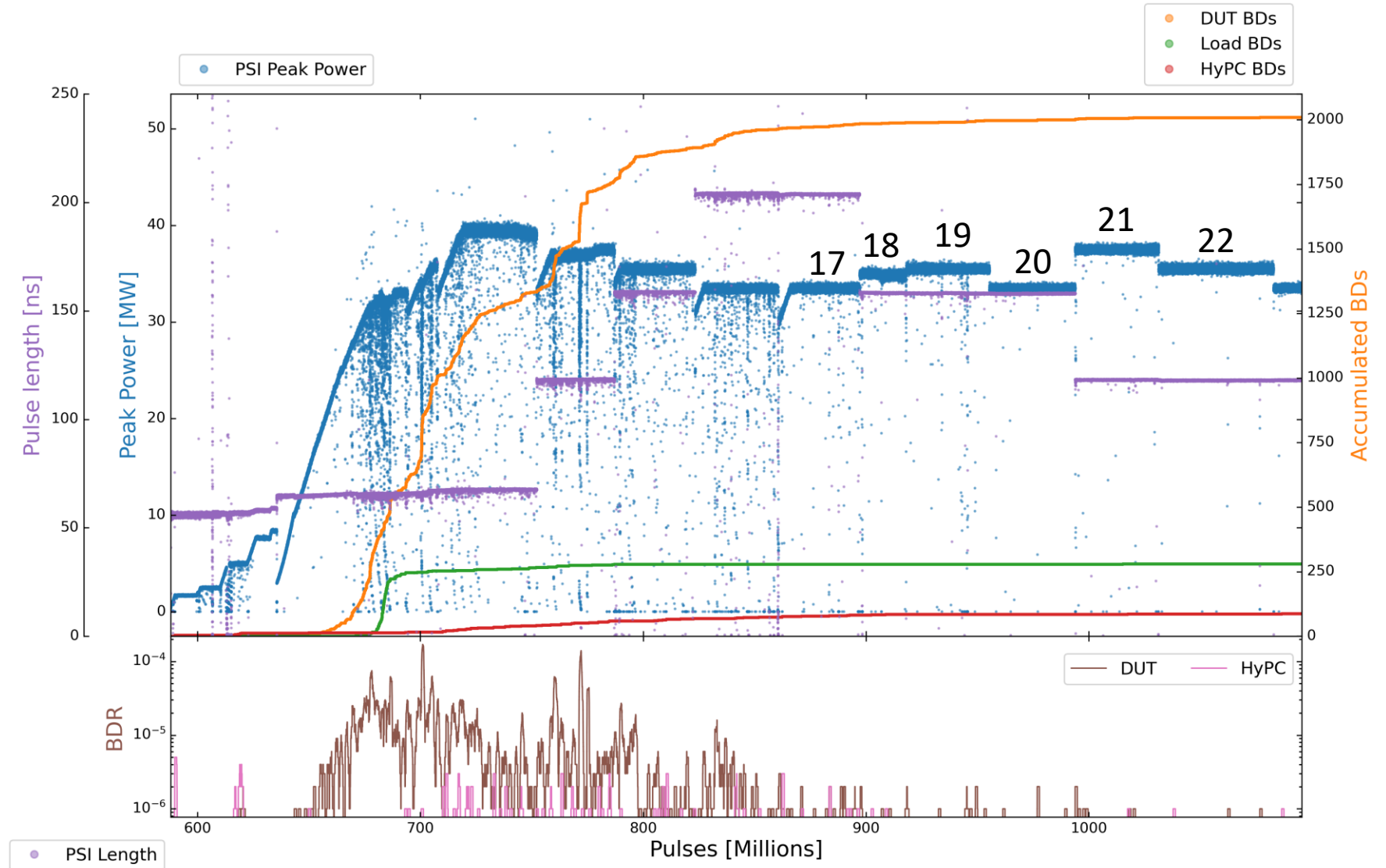
X-Box3 – Line 2



X-Box3 – Line 2

Parameters:

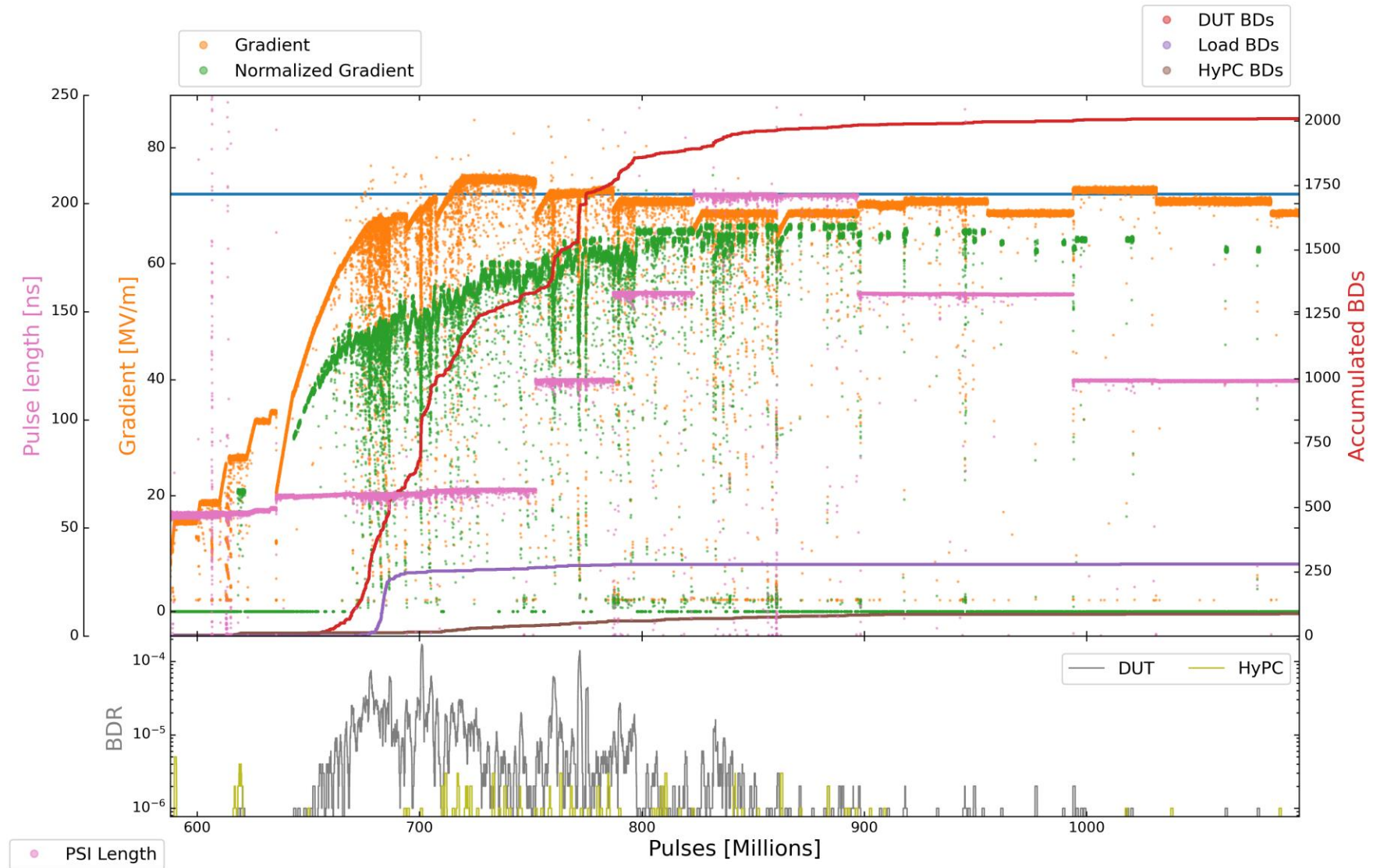
- 1.9 μ s klystron pulse
- 100 ns CP
- **150 Hz** rep rate per line
- **Current Power: 33,5 MW**



X-Box3 – Line 2

Parameters:

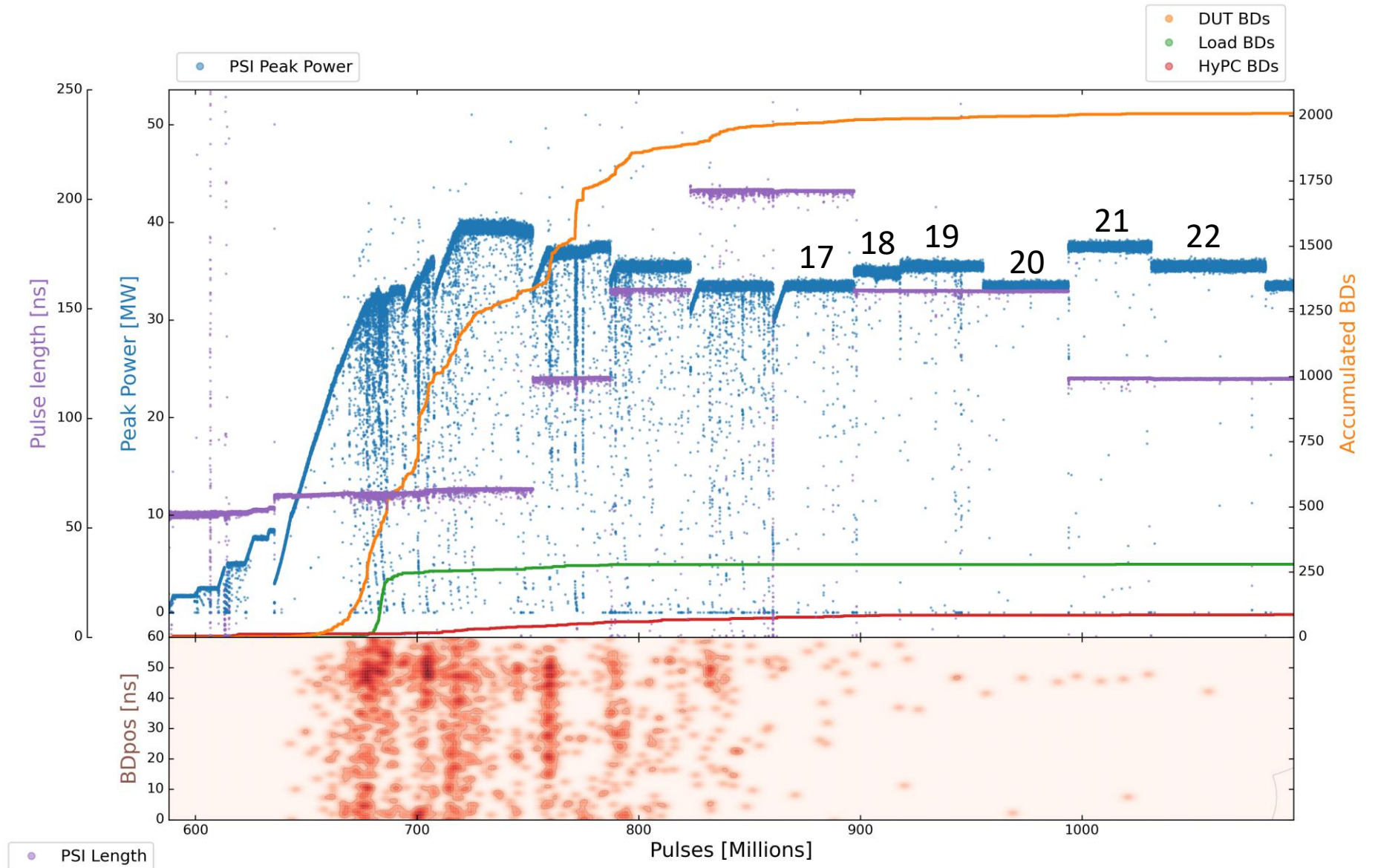
- 1.9 μs klystron pulse
- 100 ns CP
- **150 Hz** rep rate per line
- **Current Power: 33,5 MW**



X-Box3 – Line 2

Parameters:

- 1.9 μs klystron pulse
- 100 ns CP
- **150 Hz** rep rate per line
- **Current Power: 33,5 MW**



X-Box3 – Line 2

Step	Pulse Width	Compressed Pulse Width	Power	DUT BDs	DUT BDR	HyPC BDs	HyPC BDR	Millions of Pulses
17	1,9 us	200 ns (210 ns)	33.5 MW	16	5,0000E-07	6	1.87500E-07	32
18	1,9 us	150 ns (160 ns)	34.5 MW	4	2.10526E-07	2	1.05263E-07	19
19	1,9 us	150 ns (160 ns)	35.5 MW	7	2.12121E-07	0	0	33
20	1,9 us	150 ns (160 ns)	33.5 MW	4	1.08108E-07	0	0	37
21	1,9 us	100 ns (120 ns)	37.5 MW	5	1.38889E-07	1	2.77778E-08	36
22	1,9 us	100 ns (120 ns)	35.5 MW	2	4.00000E-08	1	2.00000E-08	50
23	1,9 us	100 ns (120 ns)	33.5 MW					
24	1,9 us	50 ns (72 ns)	39.5 MW					
25	1,9 us	50 ns (72 ns)	37.5 MW					
26	1,9 us	50 ns (72 ns)	35.5 MW					
27	1,9 us	50 ns (72 ns)	33.5 MW					

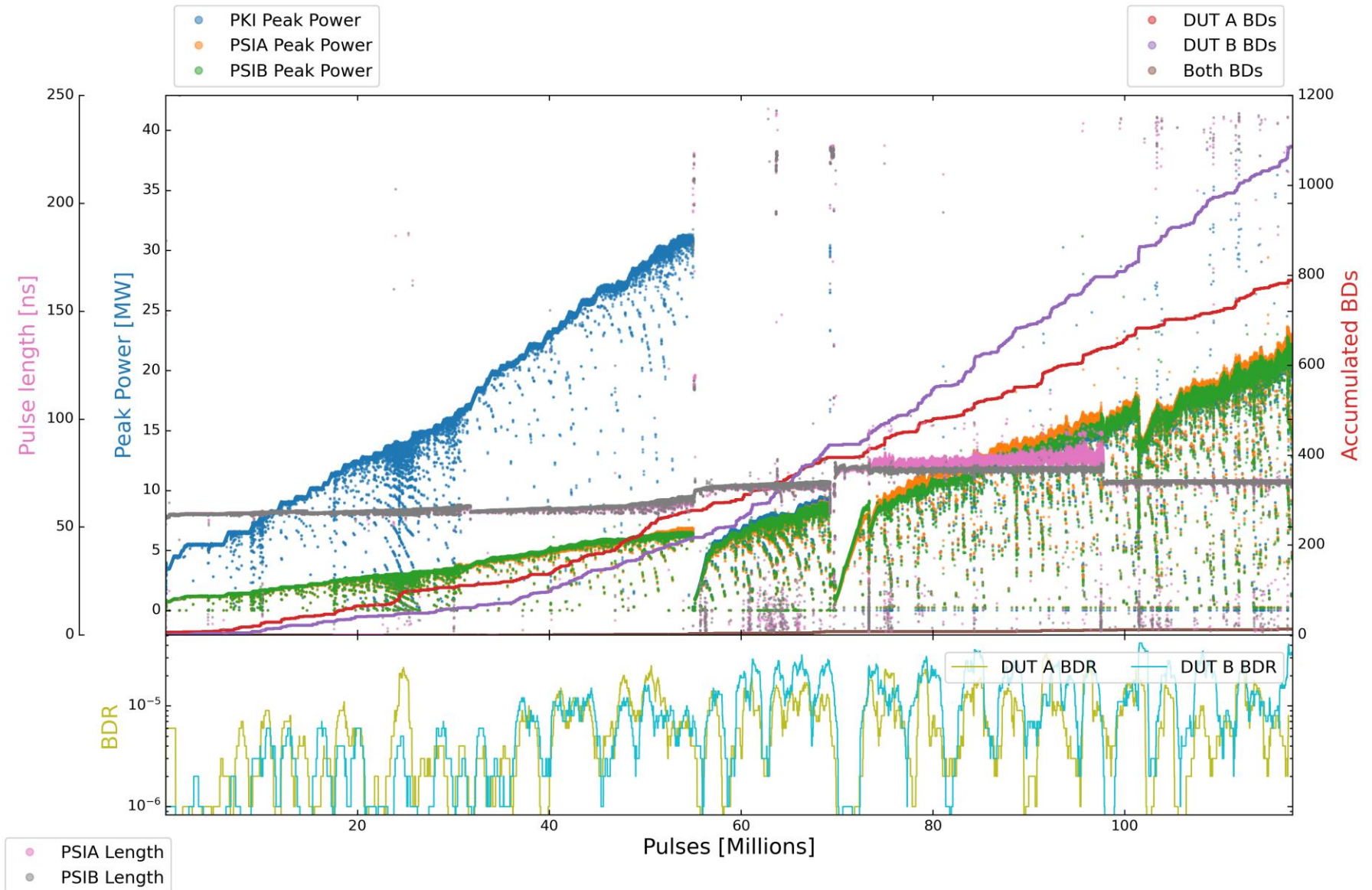
X-Box2



X-Box2

Parameters:

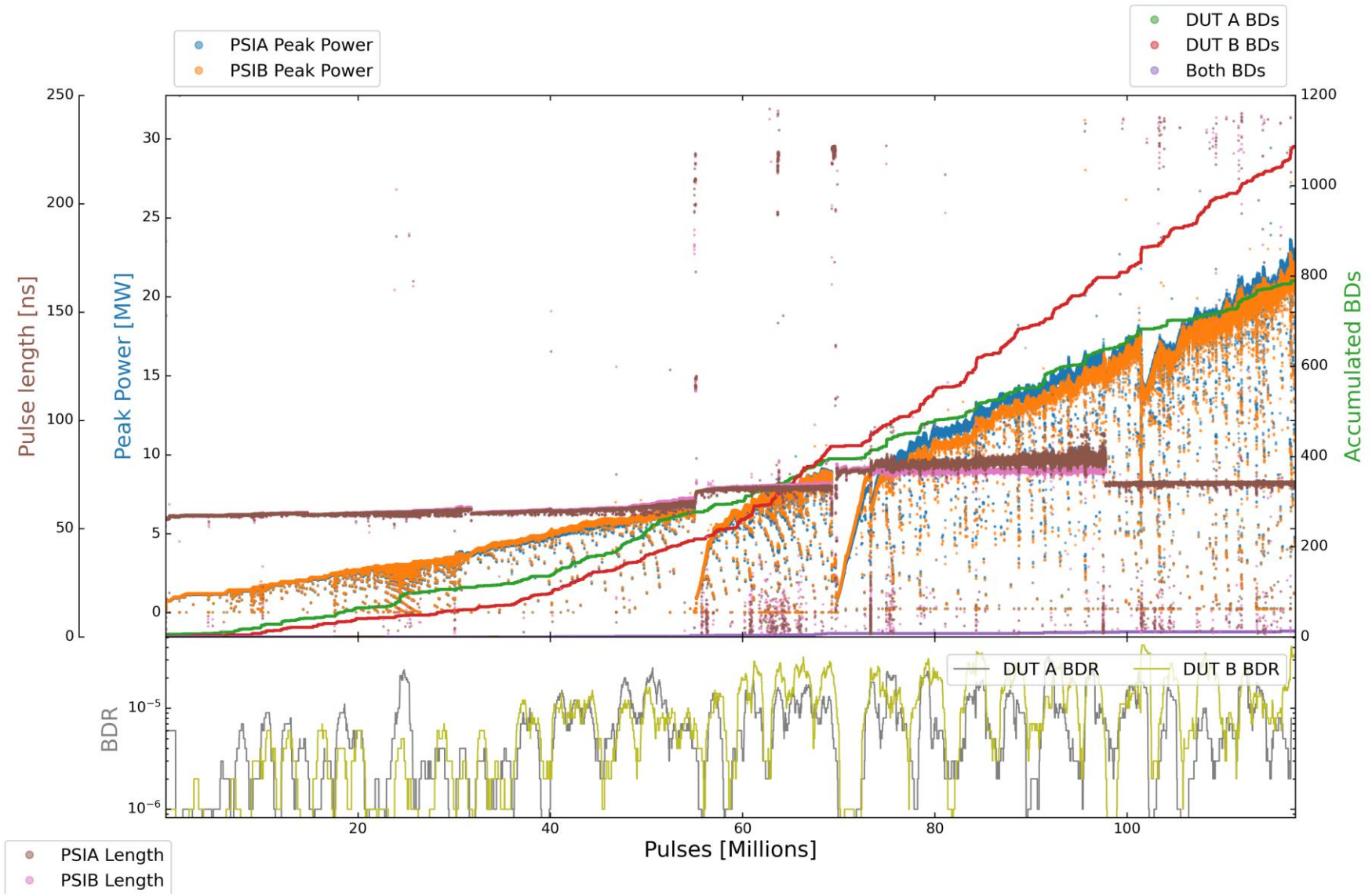
- 1.6 us klystron pulse
- 50 ns CP
- **50 Hz rep rate per line**
- **Current PKI Power: 29 MW**



X-Box2

Parameters:

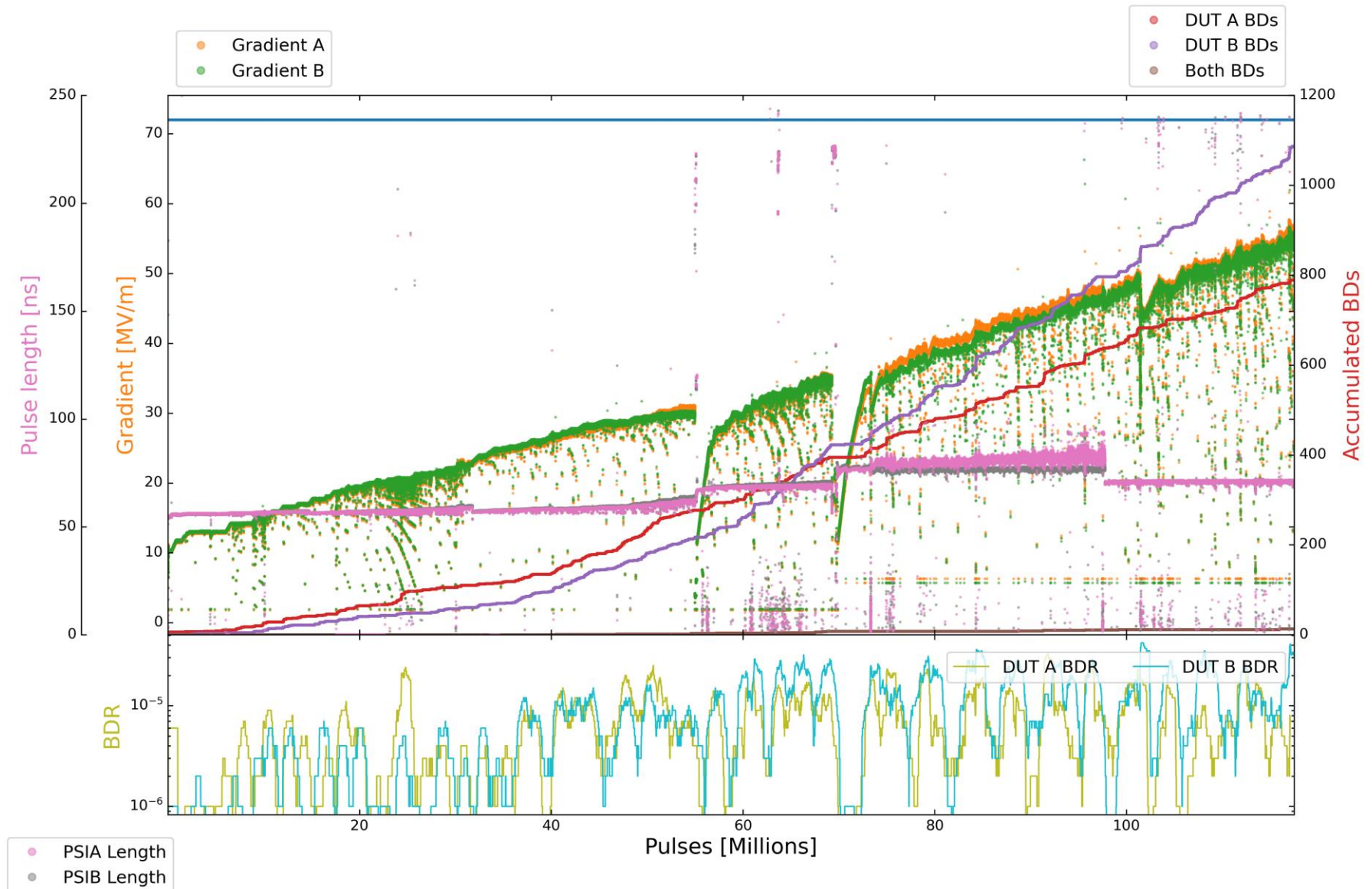
- 1.6 μ s klystron pulse
- 50 ns CP
- **50 Hz rep rate per line**
- **Current PKI Power: 20 MW**



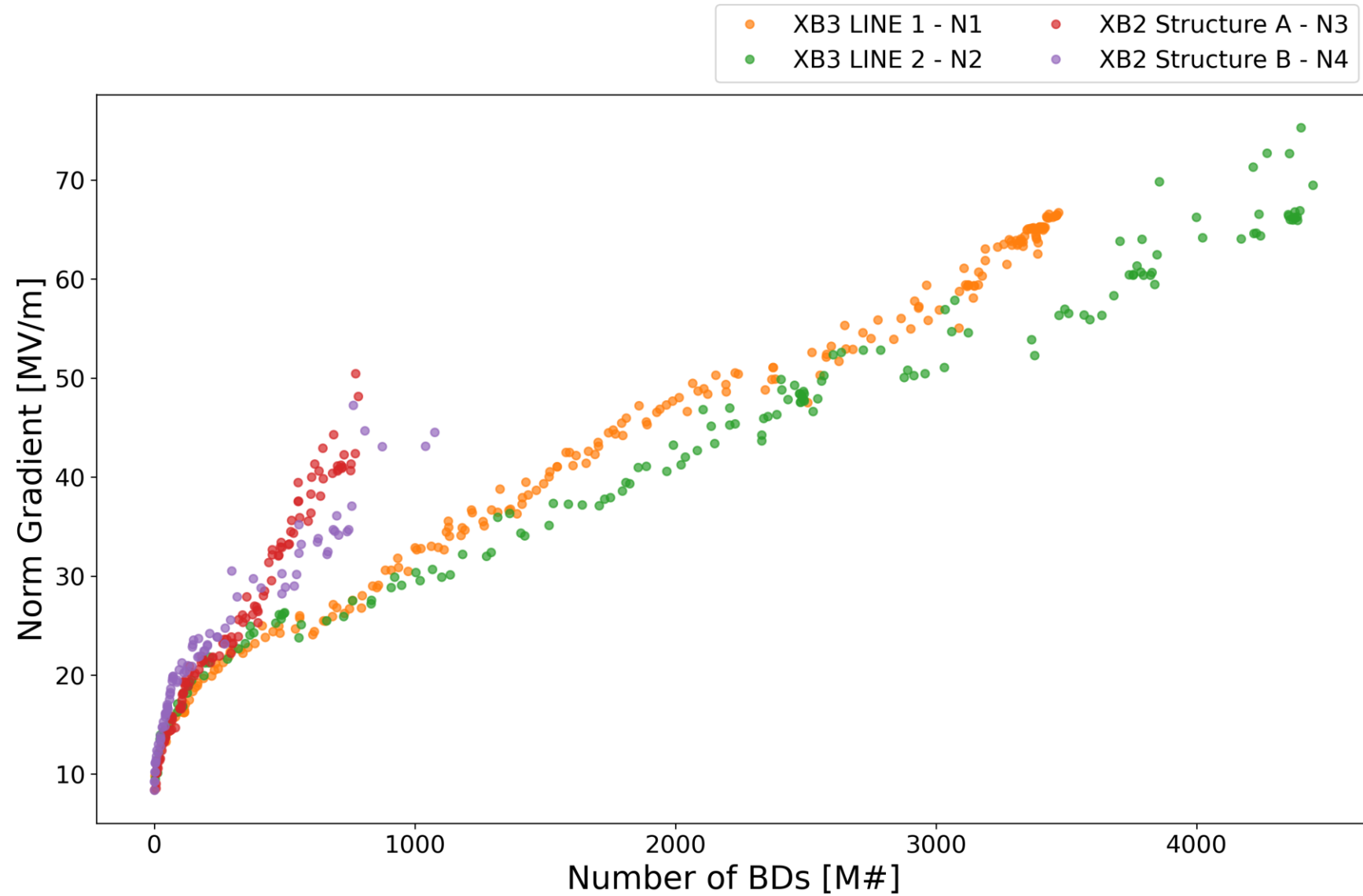
X-Box2

Parameters:

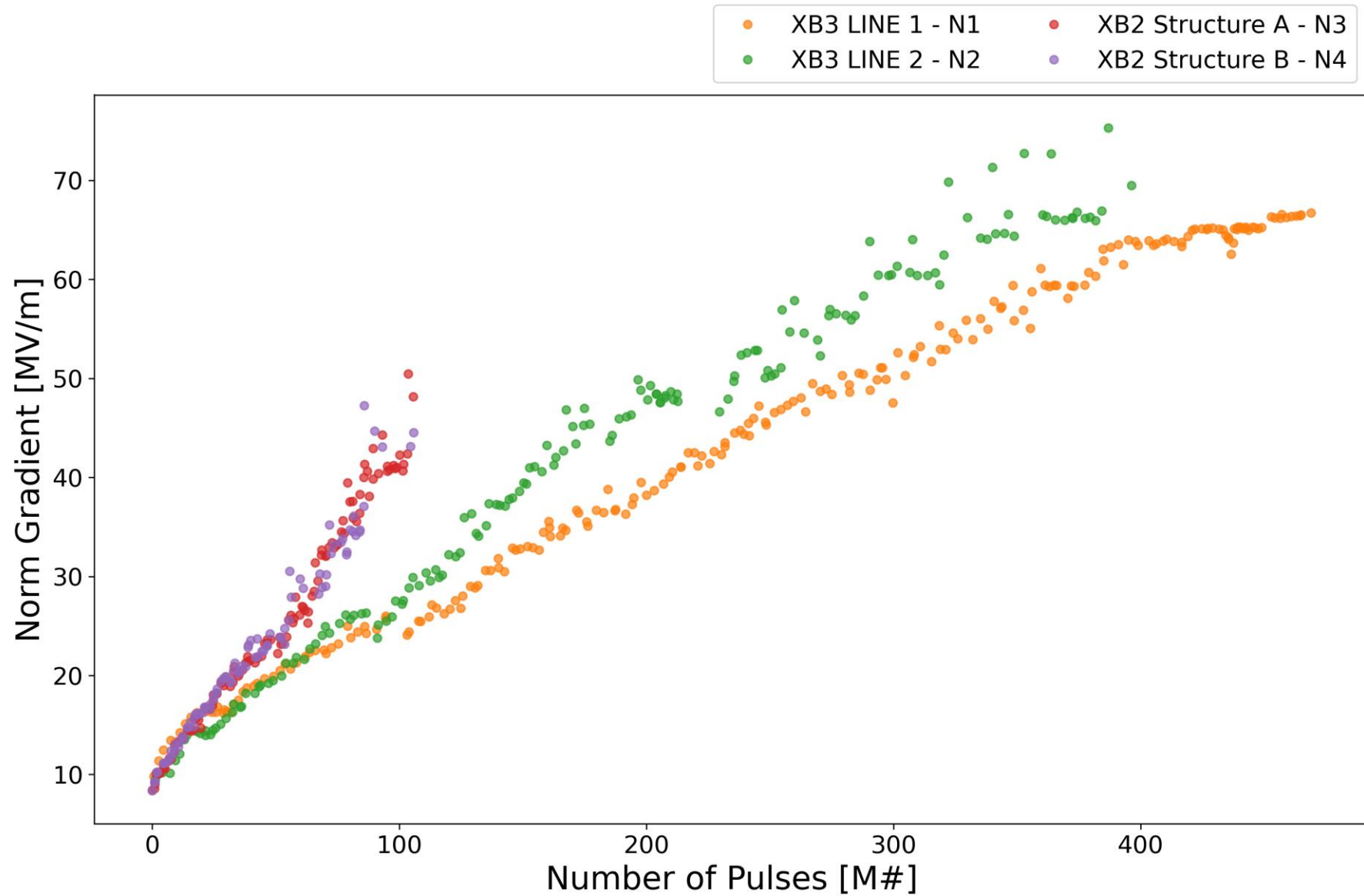
- 1.6 μs klystron pulse
- 50 ns CP
- 50 Hz rep rate per line
- **Current PKI Power:**
20 MW



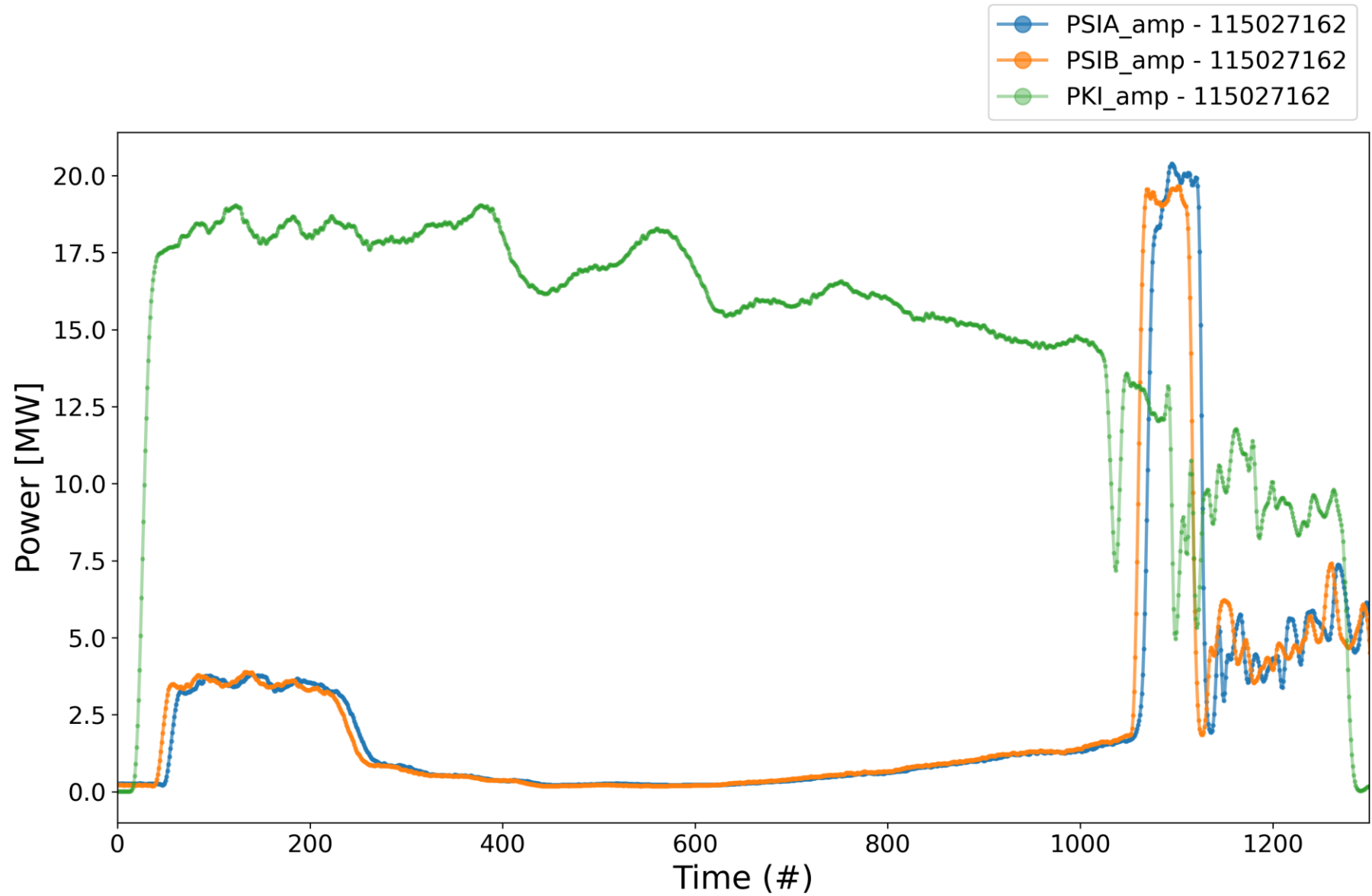
All TD31



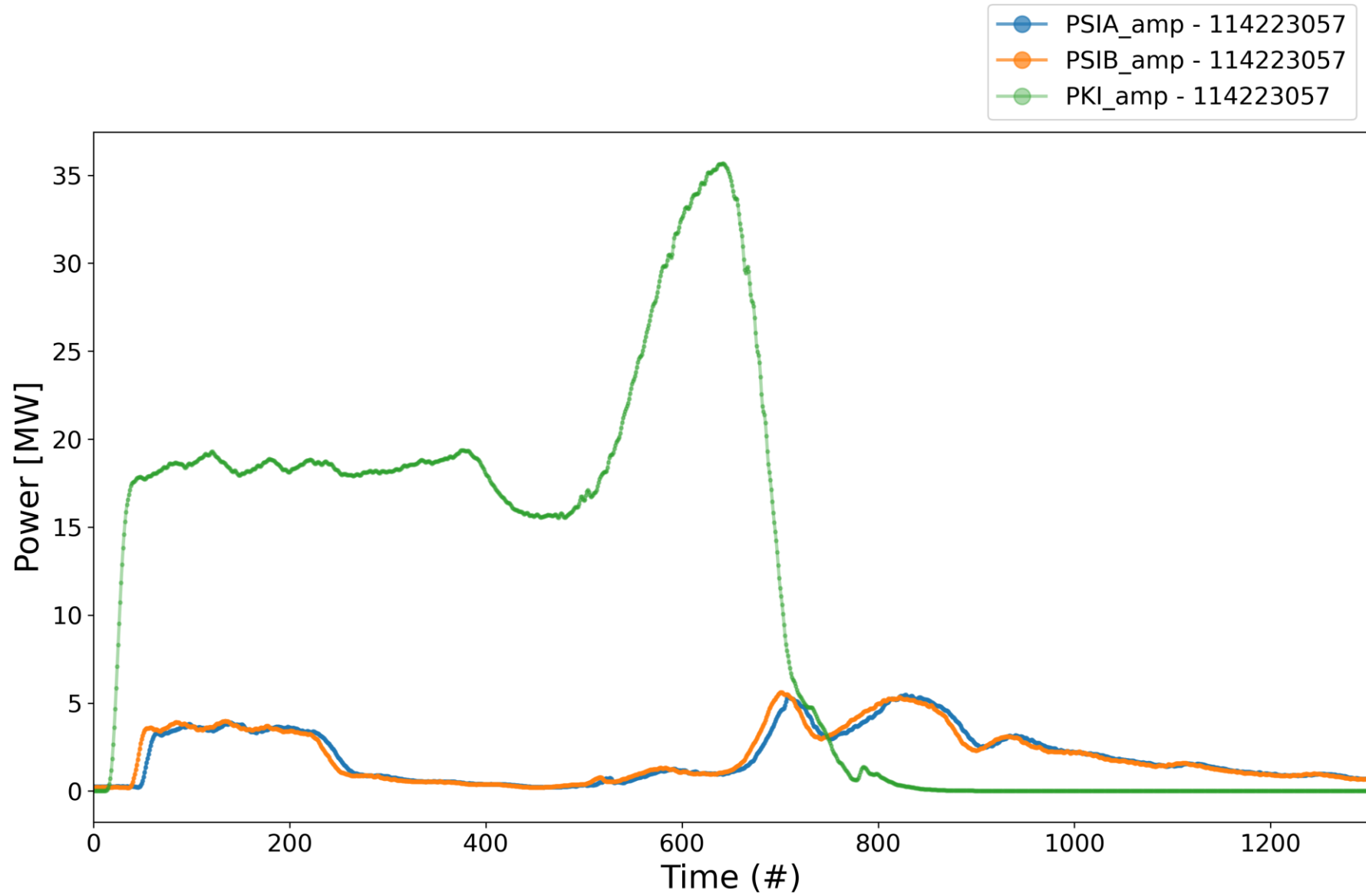
All TD31



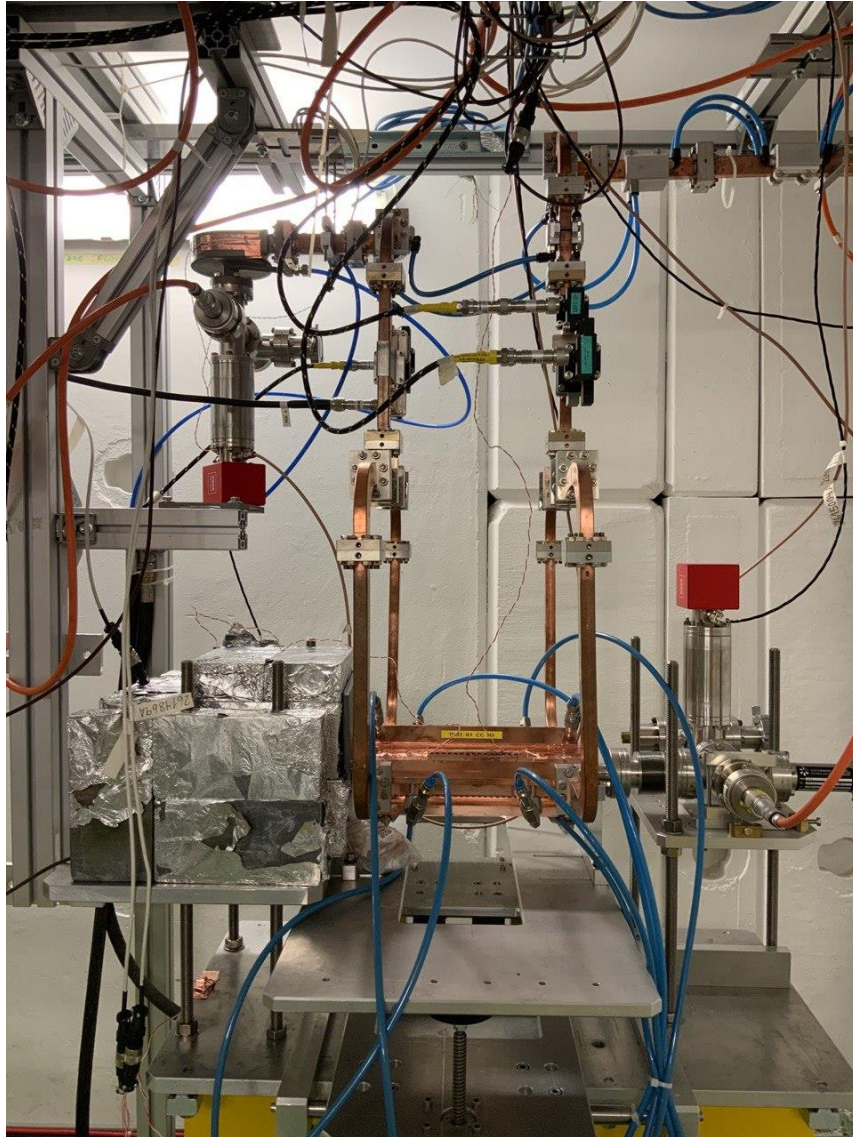
XBox2 Pulses



XBox2 Pulses



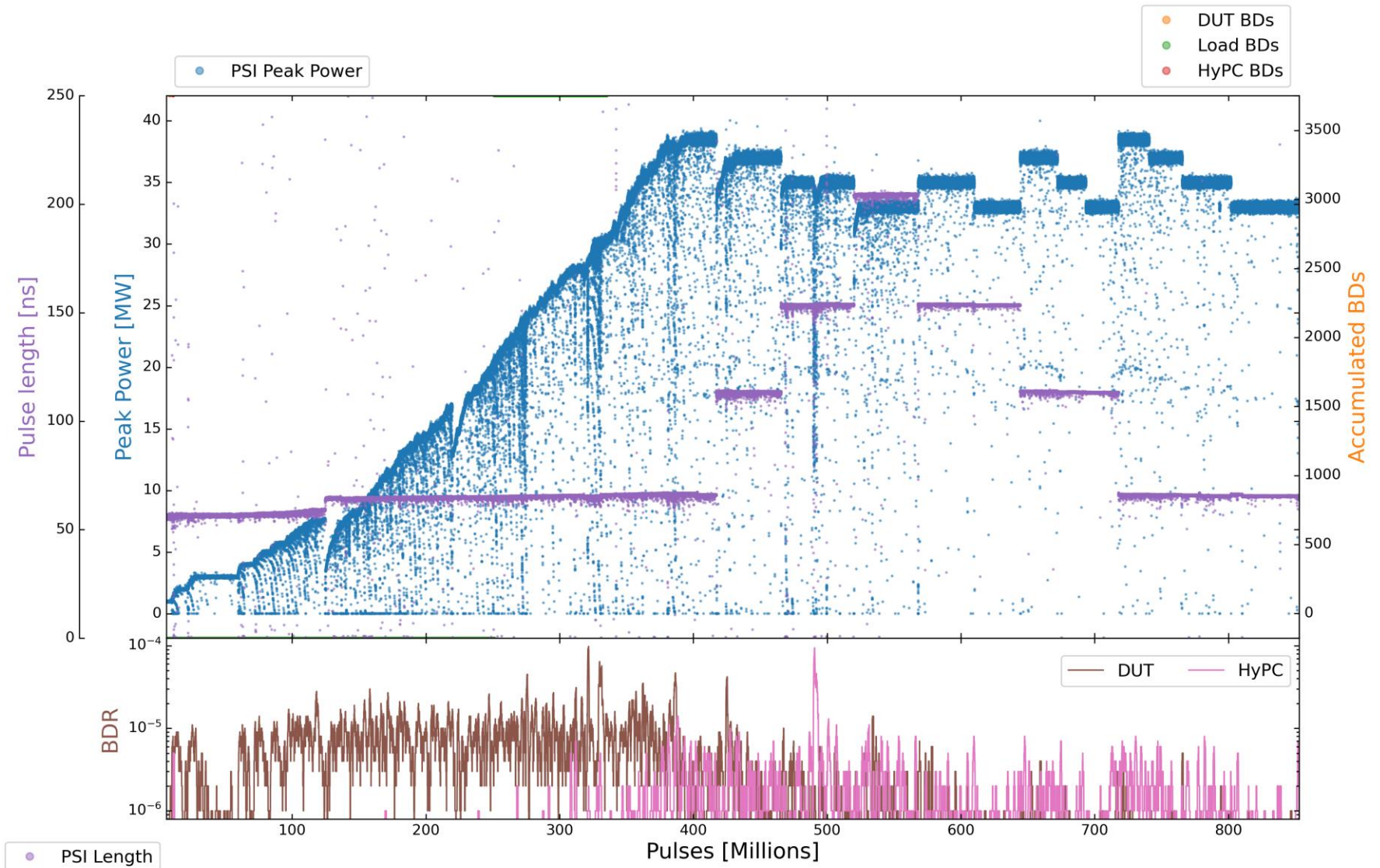
X-Box3 – Line 1



X-Box3 – Line 1

Parameters:

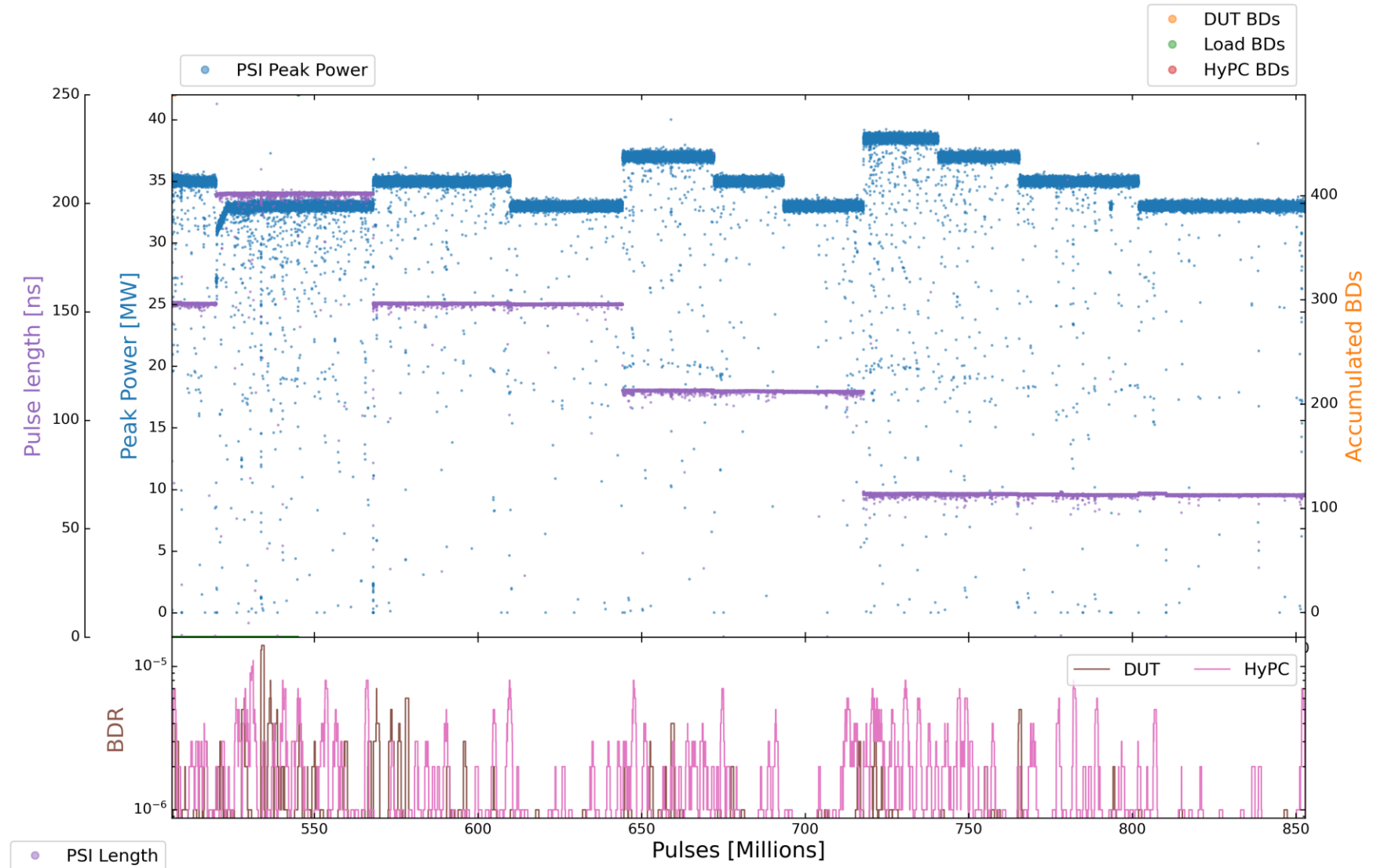
- 1.9 μ s klystron pulse
- 50 ns CP
- **150 Hz** rep rate per line
- **Current Power: 33 MW (peak)**



X-Box3 – Line 1

Parameters:

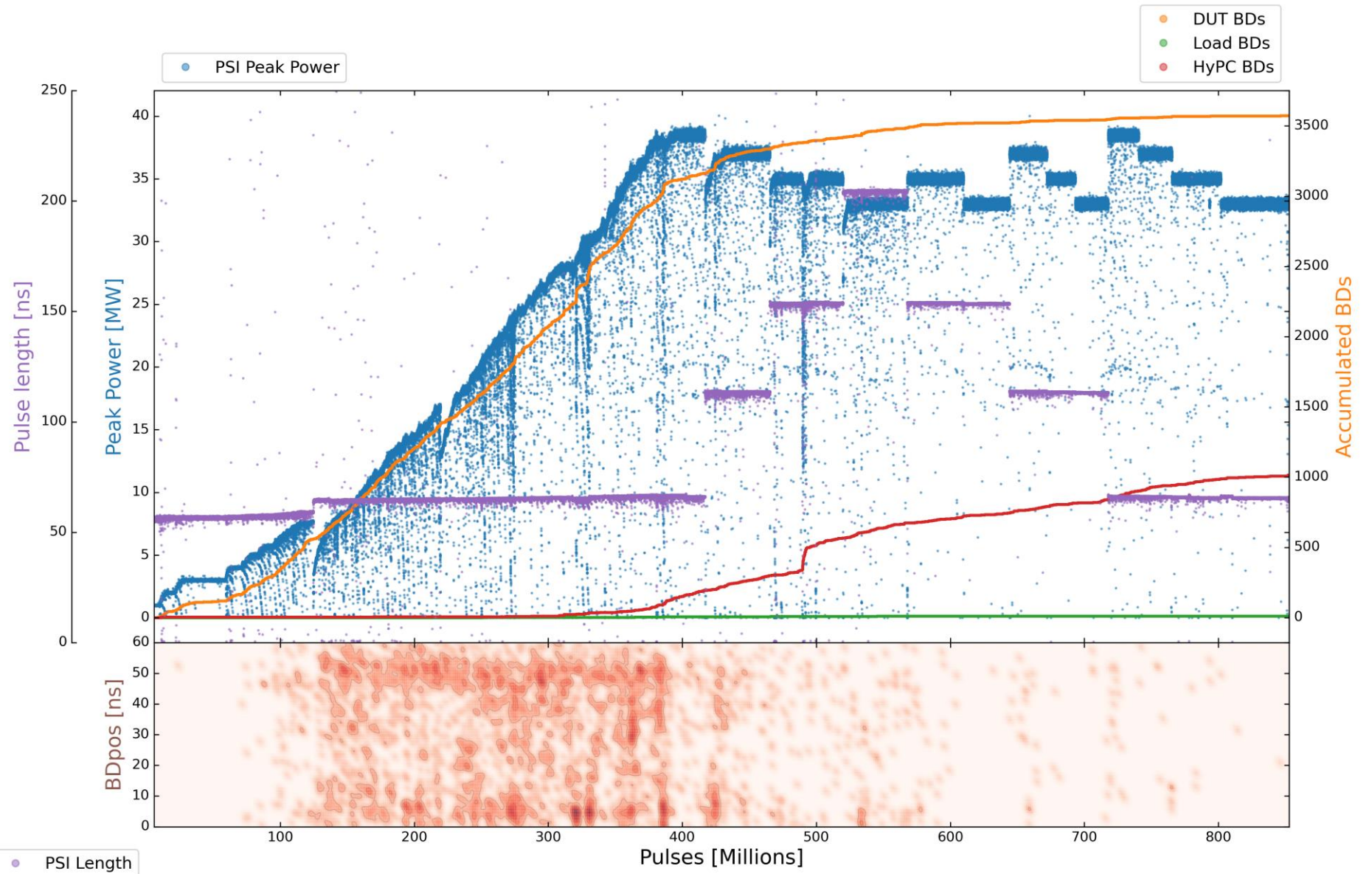
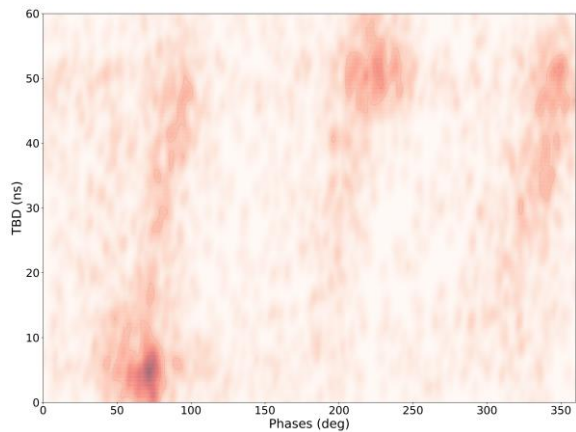
- 1.9 μ s klystron pulse
- 50 ns CP
- **150 Hz** rep rate per line
- **Current Power: 33 MW (peak)**



X-Box3 – Line 1

Parameters:

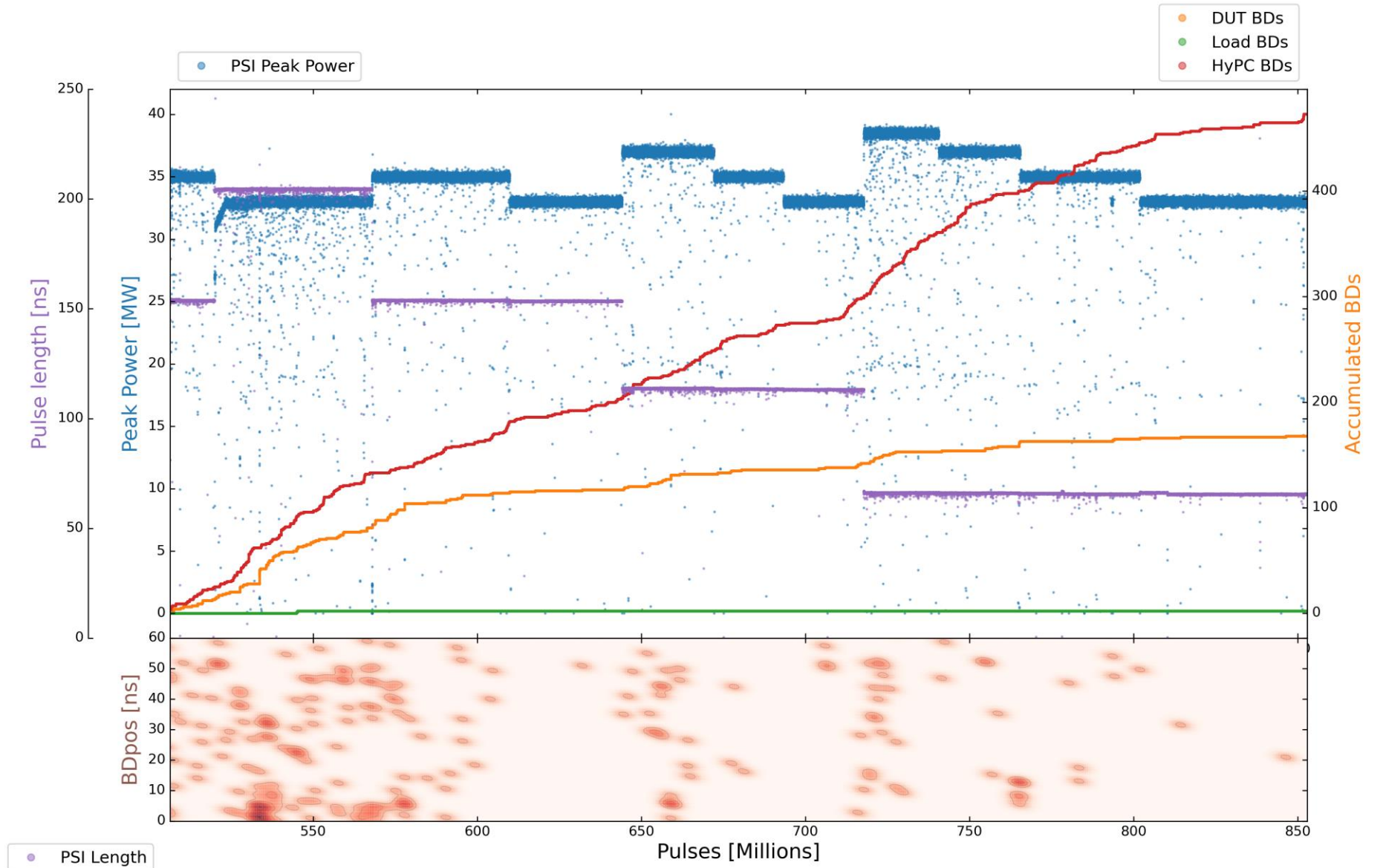
- 1.9 μs klystron pulse
- 50 ns CP
- 150 Hz rep rate per line
- **Current Power: 33 MW (peak)**



X-Box3 – Line 1

Parameters:

- 1.9 us klystron pulse
- 50 ns CP
- **150 Hz** rep rate per line
- **Current Power: 33 MW (peak)**



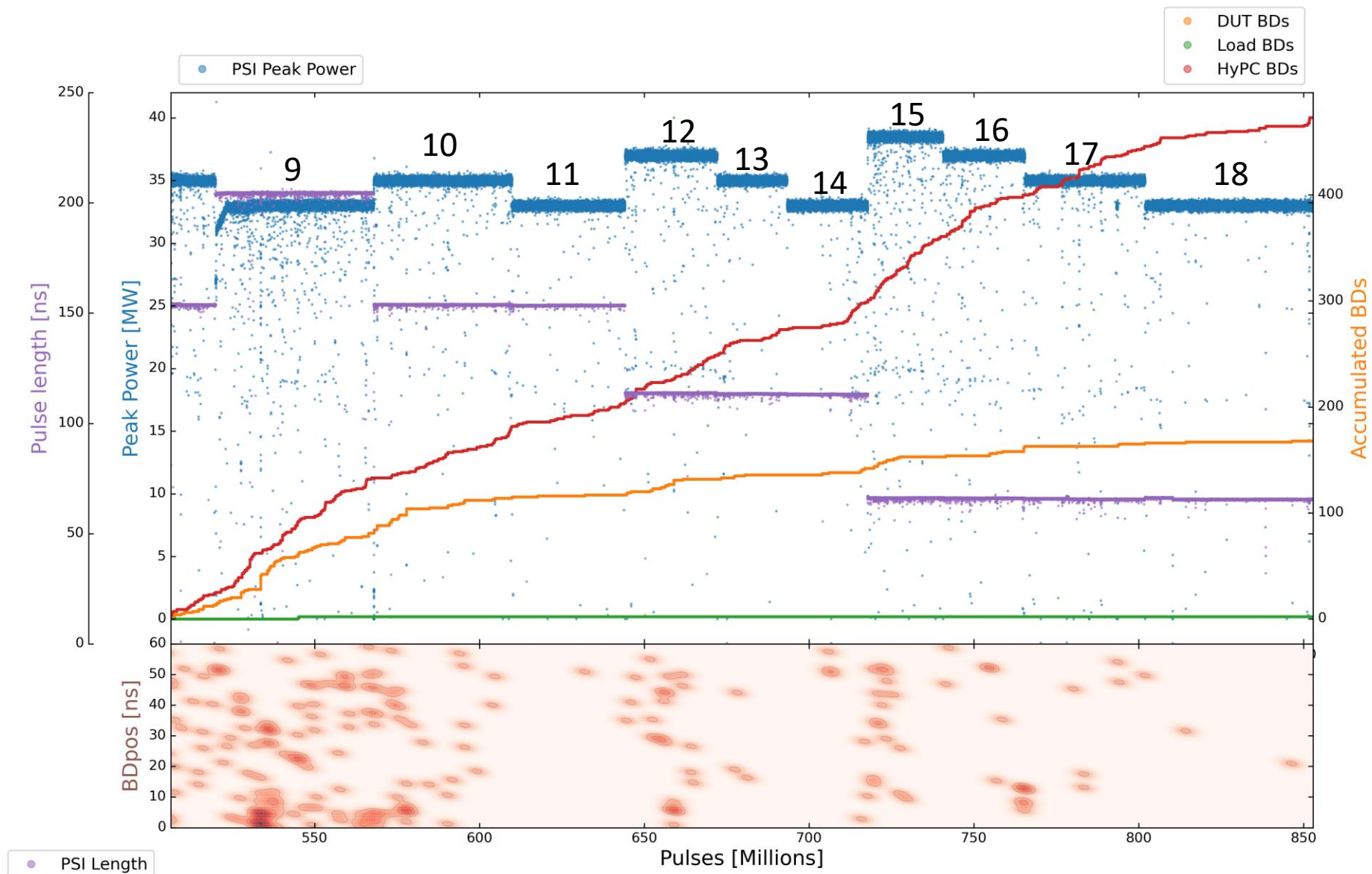
X-Box3 – Line 1

Step	Pulse Width	Compressed Pulse Width	Phase Ramp	Init Power	Max Power	Init	End	Comment
1	50 ns (72 ns)	NO	NO	0,5 MW	7,7 MW	27 July 2022	6 August 2022	
2	1,32 us	50 ns (72 ns)	Manual	3,5 MW	28,3 MW	6 August 2022	14 September 2022	
3	1,62 us	50 ns (72 ns)	Manual	27,3 MW	31,5 MW	14 September 2022	16 September 2022	
4	1,9 us	50 ns (72 ns)	Manual	30,5 MW	38,5 MW	16 September 2022	22 September 2022	
5	1,9 us	100 ns (120 ns)	Manual	34 MW	37 MW	22 September 2022	26 September 2022	
6	1,9 us	150 ns (160 ns)	Manual	34 MW	35 MW	26 September 2022	3 October 2022	
7	1,9 us	200 ns (210 ns)	Manual	31 MW	33 MW	3 October 2022	5 October 2022	
8								Data points run
9	1,9 us	200 ns (210 ns)	Manual	33 MW	33 MW	5 October 2022	7 October 2022	Init Pulse Count: 542 M# End Pulse Count: 567 M#
10	1,9 us	150 ns (160 ns)	Manual	35 MW	35 MW	7 October 2022	10 October 2022	Init Pulse Count: 569 M# End Pulse Count: 600 M#
11	1,9 us	150 ns (160 ns)	Manual	33 MW	33 MW	10 October 2022	13 October 2022	Init Pulse Count: 602 M# End Pulse Count: 643 M#
12	1,9 us	100 ns (120 ns)	Manual	37 MW	37 MW	13 October 2022	15 October 2022	Init Pulse Count: 645 M# End Pulse Count: 671 M#
13	1,9 us	100 ns (120 ns)	Manual	35 MW	35 MW	15 October 2022	17 October 2022	Init Pulse Count: 673 M# End Pulse Count: 693 M#
14	1,9 us	100 ns (120 ns)	Manual	33 MW	33 MW	17 October 2022	19 October 2022	Init Pulse Count: 694M# End Pulse Count: 717 M#
15	1,9 us	50 ns (72 ns)	Manual	38,5 MW	38,5 MW	19 October 2022	21 October 2022	Init Pulse Count: 719 M# End Pulse Count: 740 M#
16	1,9 us	50 ns (72 ns)	Manual	37 MW	37 MW	21 October 2022	23 October 2022	Init Pulse Count: 741 M# End Pulse Count: 764 M#
17	1,9 us	50 ns (72 ns)	Manual	35 MW	35 MW	23 October 2022	27 October 2022	Init Pulse Count: 766 M# End Pulse Count: 801 M#
18	1,9 us	50 ns (72 ns)	Manual	33 MW	33 MW	27 October 2022		Init Pulse Count: 803 M# End Pulse Count:

X-Box3 – Line 1

Parameters:

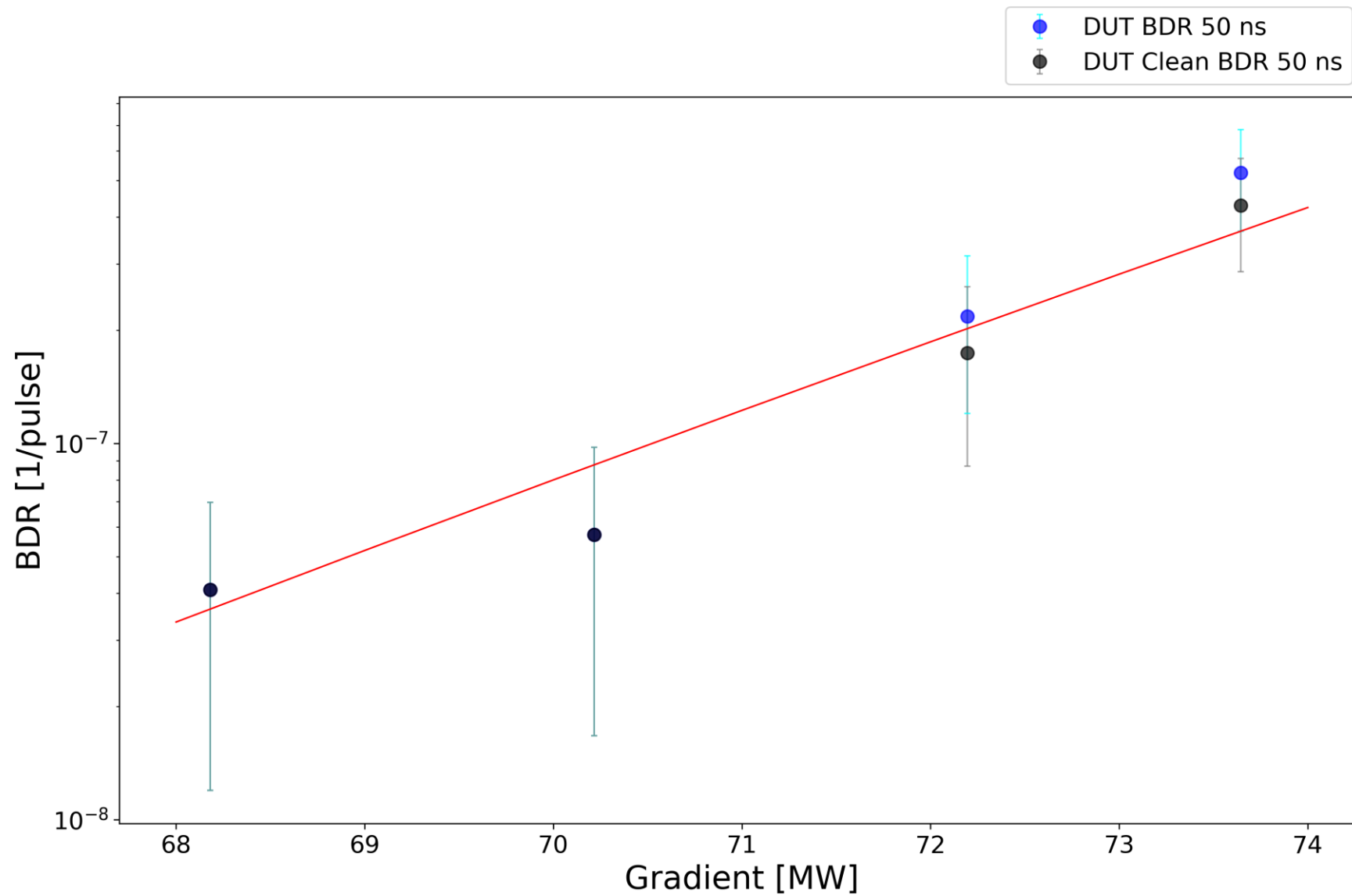
- 1.9 us klystron pulse
- 50 ns CP
- **150 Hz** rep rate per line
- **Current Power: 33 MW (peak)**



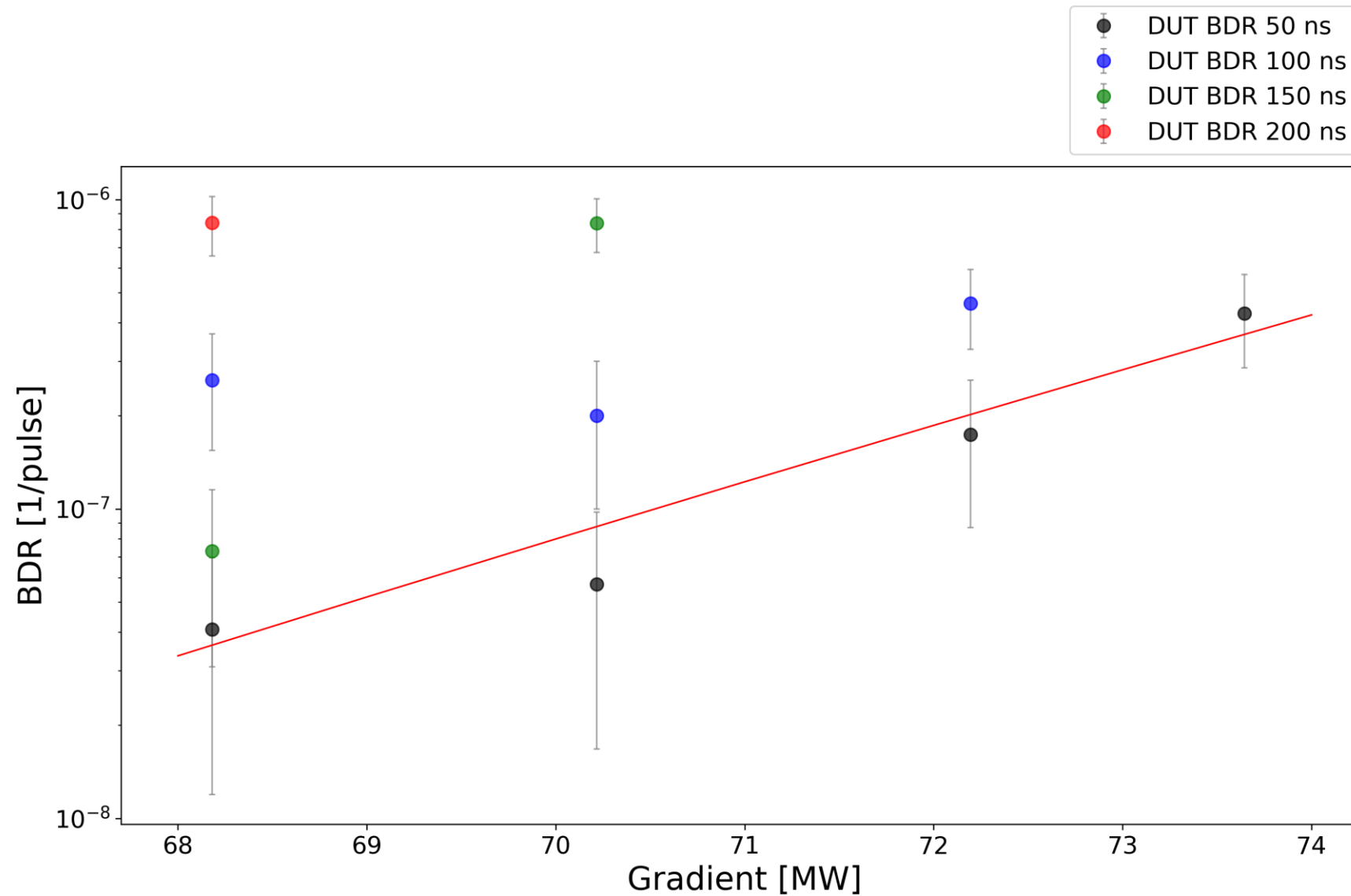
X-Box3 – Line 1

Step	Pulse Width	Compressed Pulse Width	Power	DUT BDs	DUT BDR	HyPC BDs	HyPC BDR	Millions of Pulses
9	1,9 us	200 ns (210 ns)	33 MW	23	9.20000E-07	50	2.00000E-06	25
10	1,9 us	150 ns (160 ns)	35 MW	27	8.70968E-07	29	9.35484E-07	31
11	1,9 us	150 ns (160 ns)	33 MW	5	1.21951E-07	40	9.75610E-07	41
12	1,9 us	100 ns (120 ns)	37 MW	13	5.00000E-07	41	1.57692E-06	26
13	1,9 us	100 ns (120 ns)	35 MW	4	2.00000E-07	23	1.15000E-06	20
14	1,9 us	100 ns (120 ns)	33 MW	6	2.60870E-07	24	1.04348E-06	23
15	1,9 us	50 ns (72 ns)	38,5 MW	11	5.23810E-07	58	2.76190E-06	21
16	1,9 us	50 ns (72 ns)	37 MW	5	2.17391E-07	37	1.60870E-06	23
17	1,9 us	50 ns (72 ns)	35 MW	2	5.71429E-08	44	1.25714E-06	35
18	1,9 us	50 ns (72 ns)	33 MW	2	4.08163E-08	27	5.51020E-07	50

X-Box3 – Line 1



X-Box3 – Line 1



X-Box3 – Line 1

