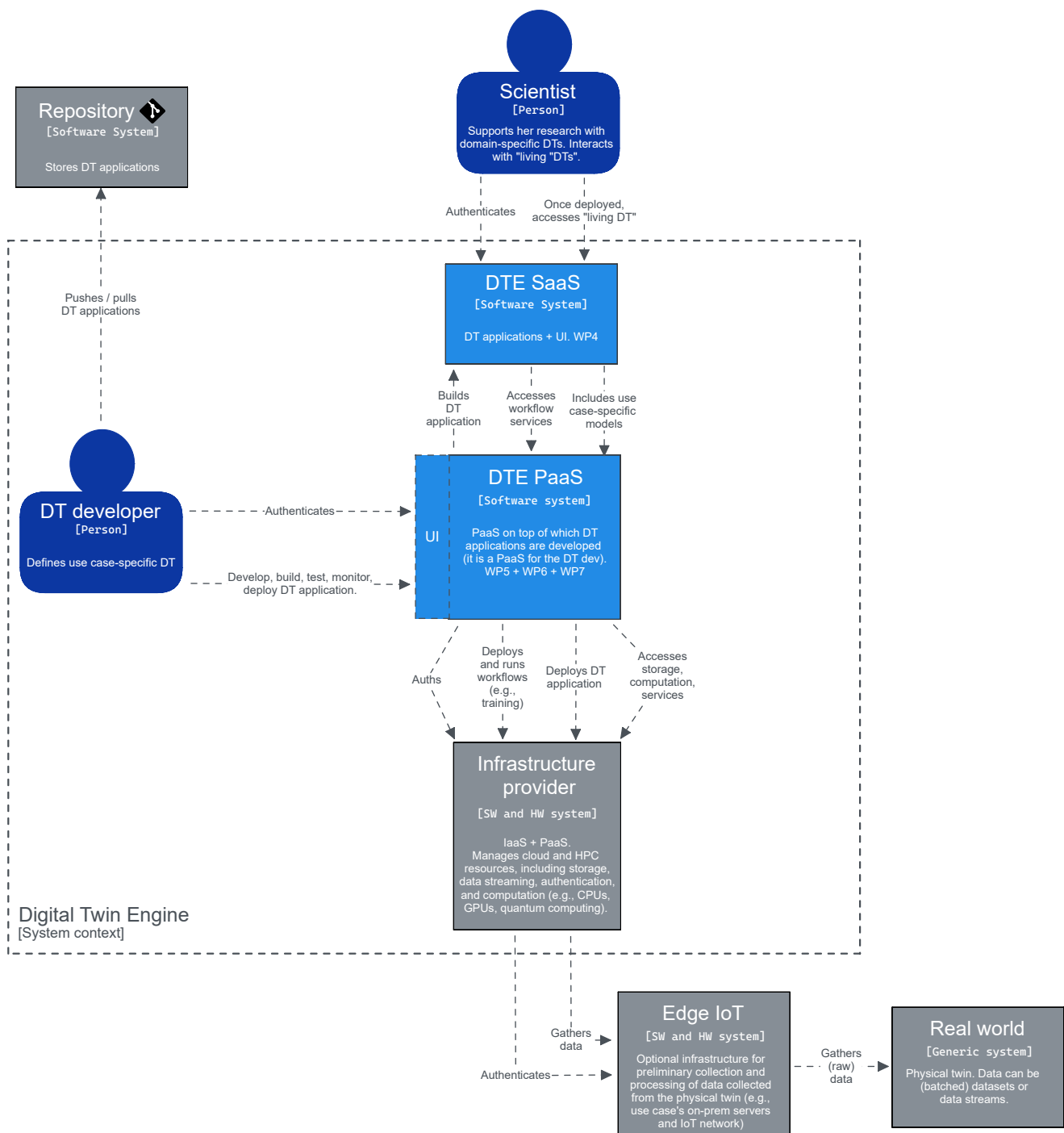


# **T6.5 architecture - Conceptual design v2**

This document provides an overview of the conceptual design for T6.5 architecture, from the digital twin engine (DTE) system context to T6.5 components, following a top-down approach. The conceptual design has been organized according to the prescriptions of the [C4 model](#).

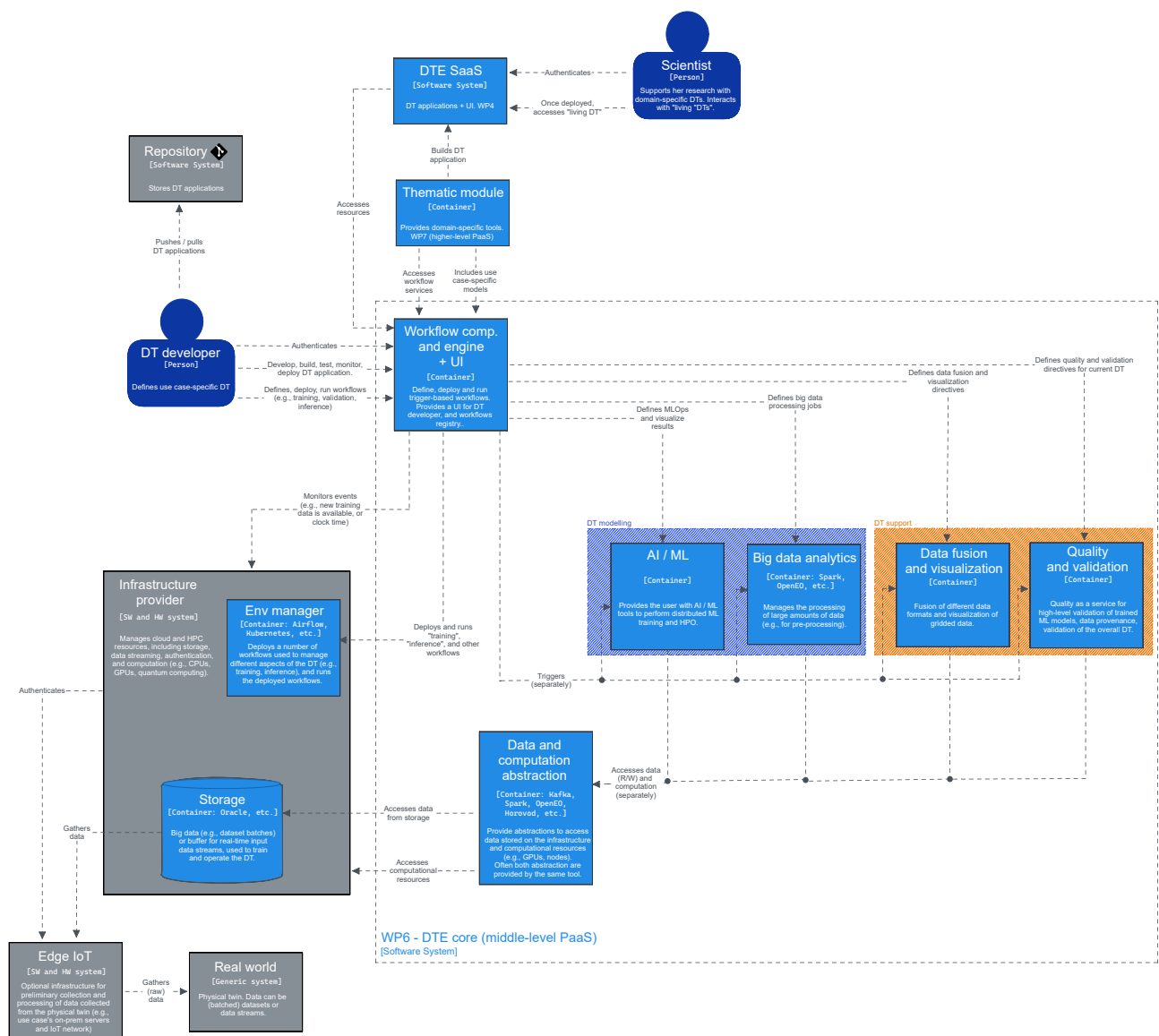
## **System context**

The system context defines the boundaries of the DTE system, and its interfaces with the surrounding environment.



[System Context] Digital twin engine (DTE) - Logic relations

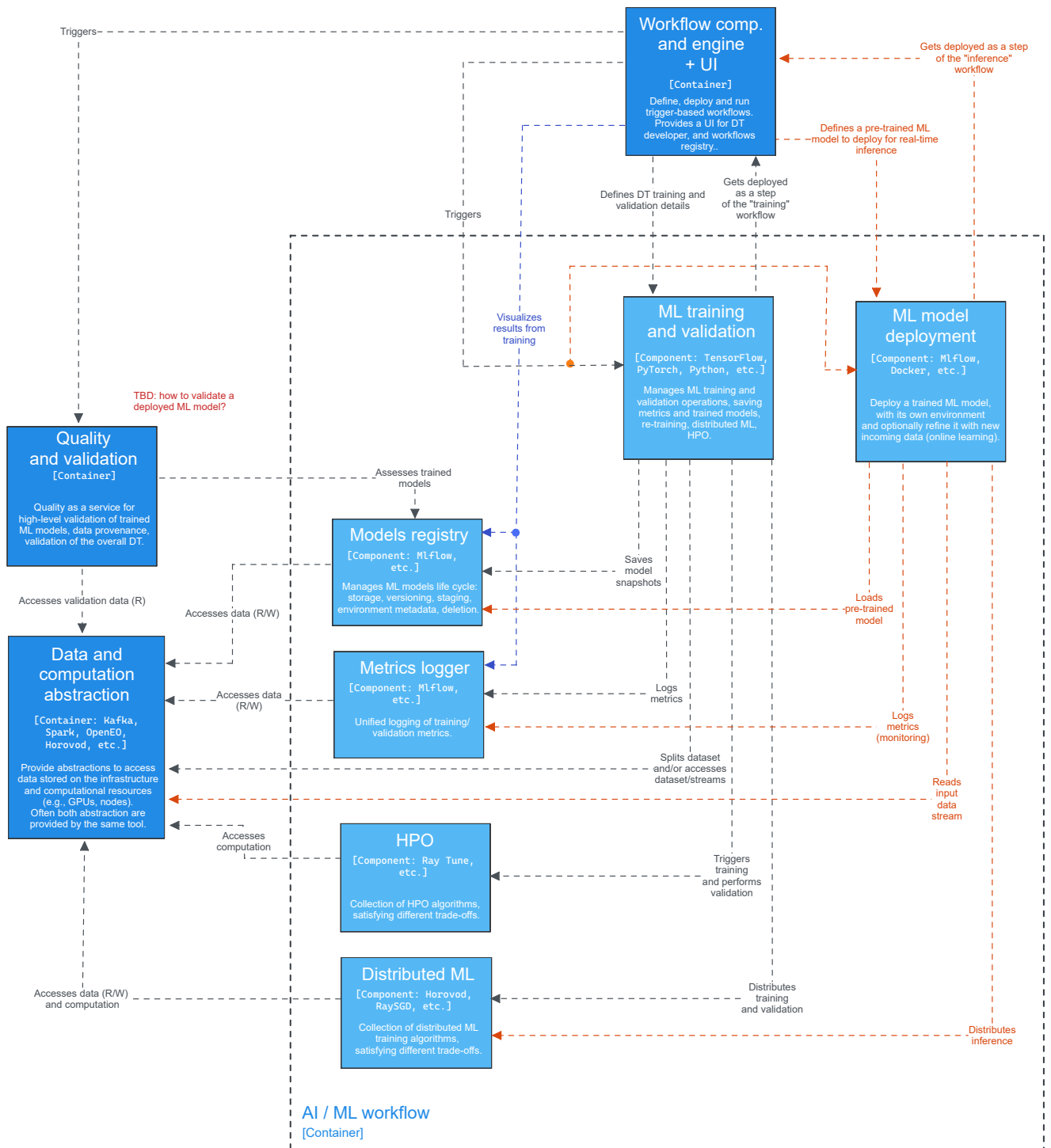
## Containers in the DTE



[Container] DTE core (WP6)

## Components of the AI container (T6.5)

The AI subsystem in the proposed DTE is intended for data-driven DT models, and is mainly devoted to two macro operations: training and deployment of ML models.



[Component] DTE - AI / ML workflow (T6.5)