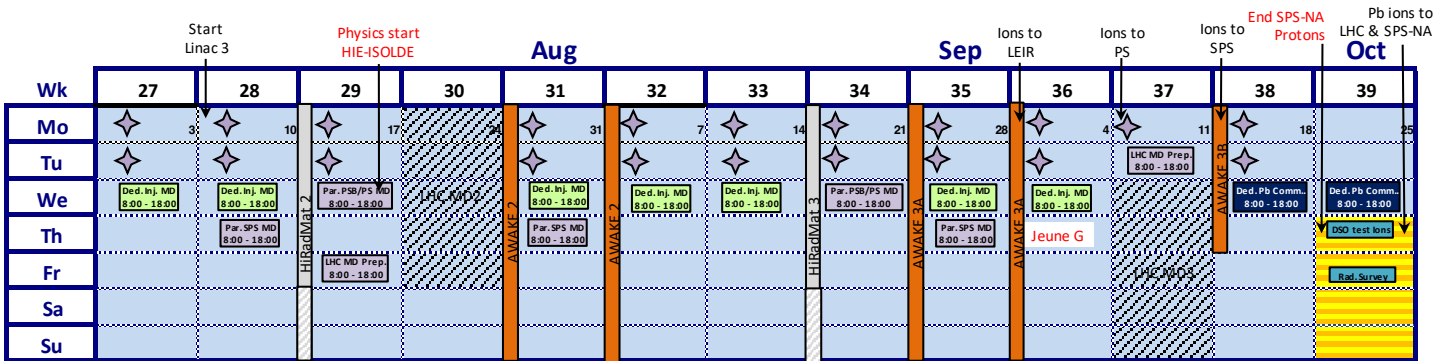
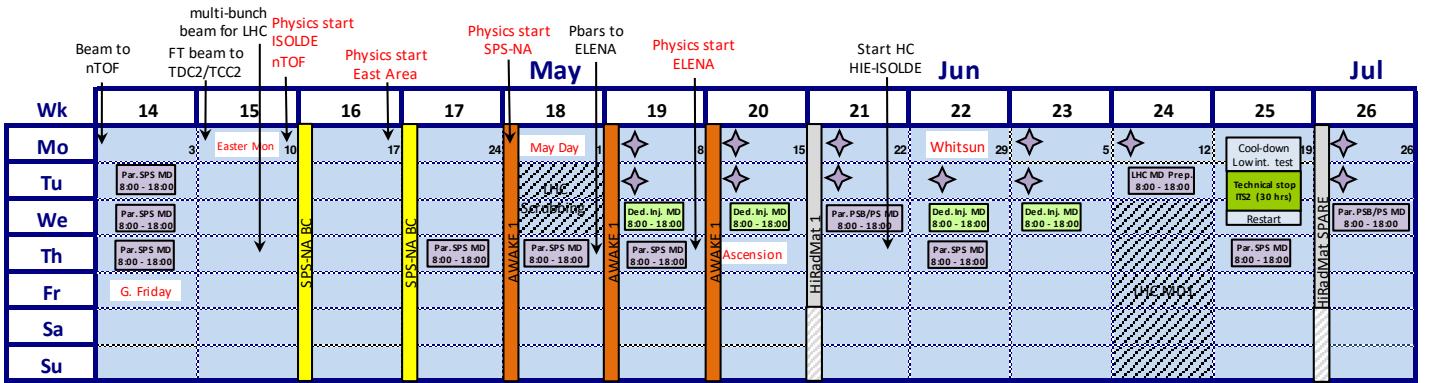
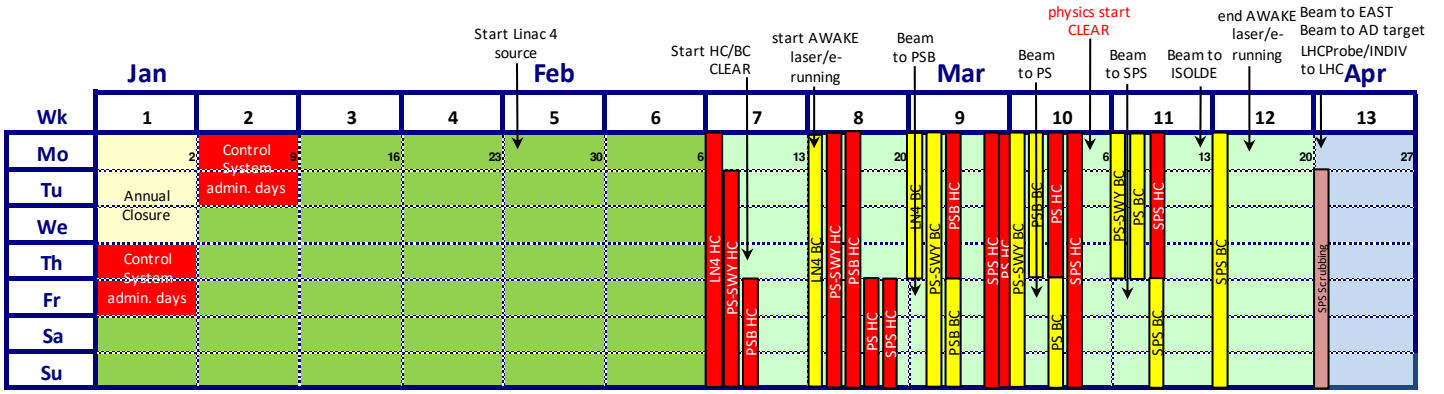
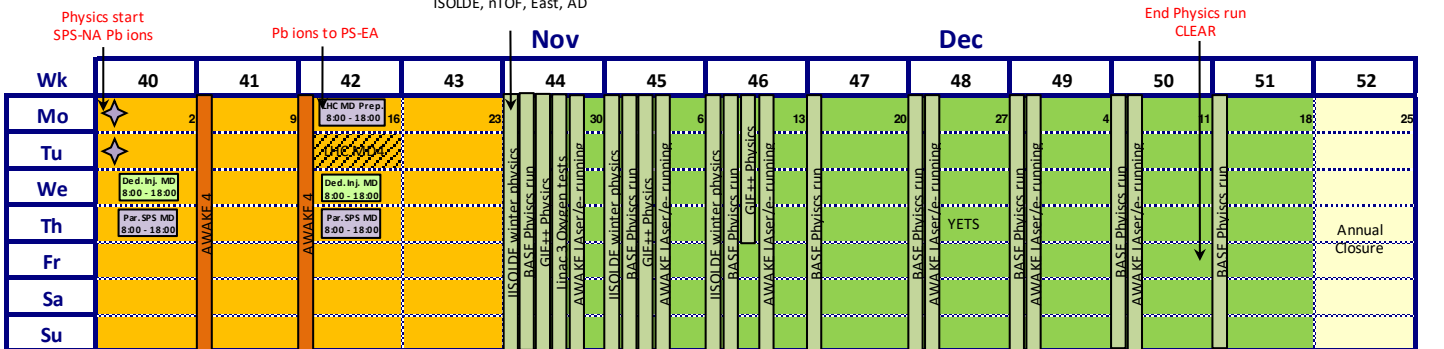


Injectors Accelerator Schedule 2023

Version 1.0 was approved at the Research Board of 7 December 2022



End Physics run @ 06:00
LHC, Pb ions NA, AWAKE
ISOLDE, nTOF, East, AD



- Proton & Antiproton physics
- Pb Ions physics
- Parallel Injectors MD block (08:00 - 18:00)
- Dedicated Injectors MD Block (08:00 - 18:00)
- YETS & Injector chain Technical Stop
- SPS ions Hardware commissioning
- Annual closure
- Hardware commissioning / Sys. admin days
- Beam commissioning
- AWAKE Run (08:00 - 24:00)
- HiRadMat Run & reserve (08:00 - 24:00)
- ISOLDE winter physics (no p+ beam)
- Parallel SPS ions beam commissioning
- Dedicated SPS ions beam commissioning
- LHC MD block proton period
- LHC MD blocks ion period
- Special interventions/stops
- CERN Official Holidays
- Linac 3 source refill