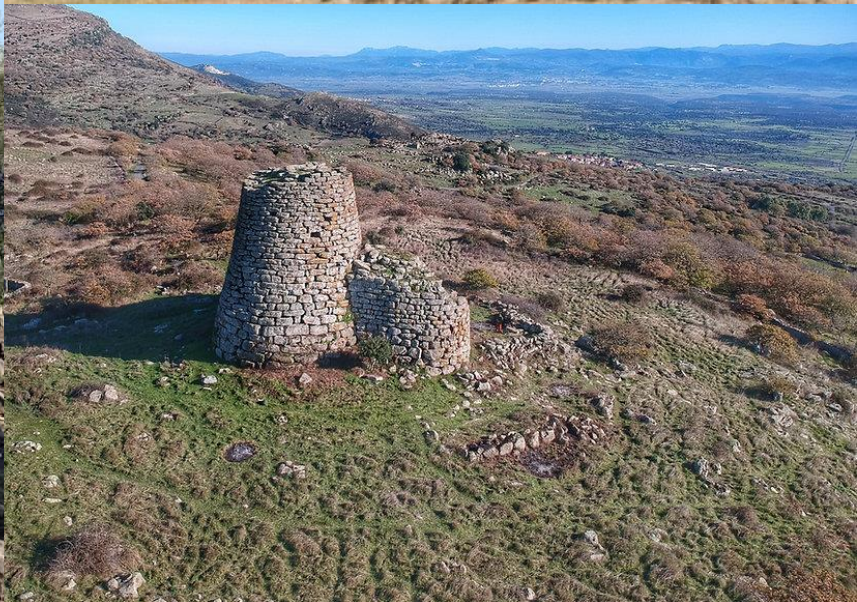


Sardinia cultural heritage: the nuraghi and nuragic civilization

Giovanna Fundoni







BIBI PINNA



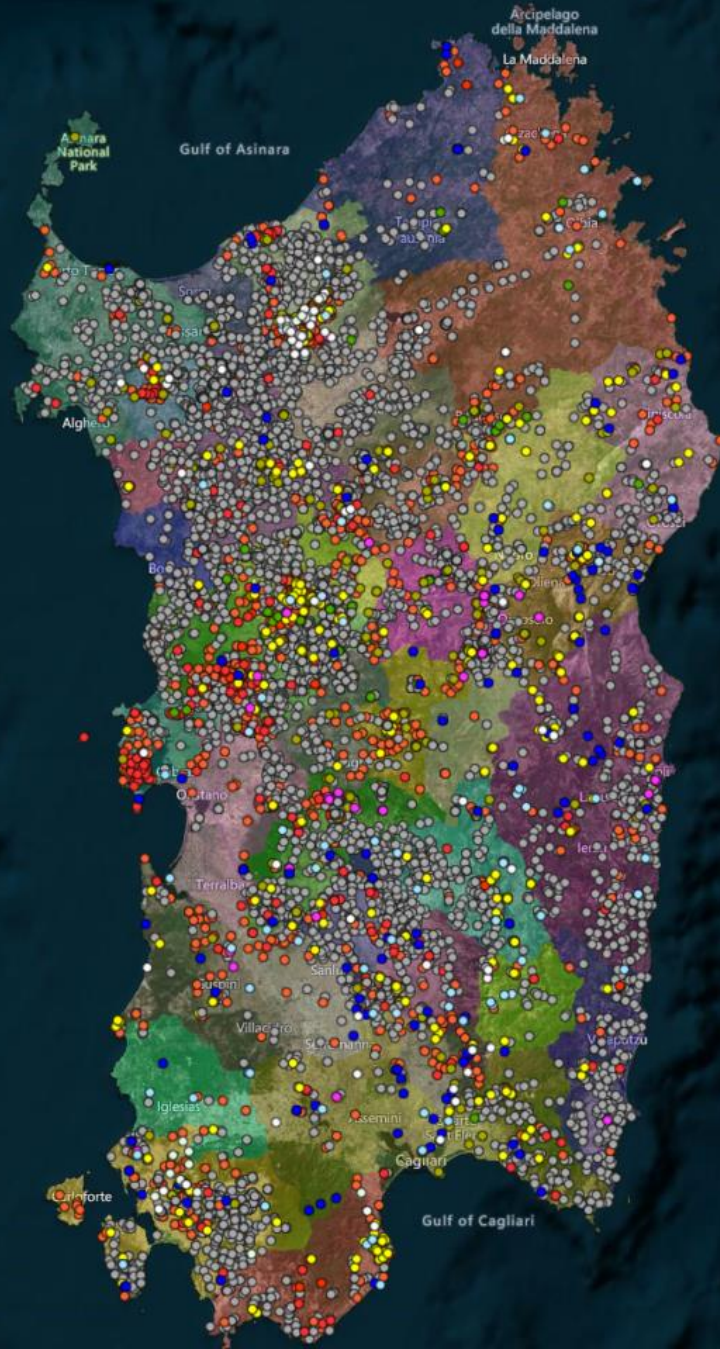
BIBI PINNA



*P. Anna Arresi
Nuraghe Arresi
@ Marco Cocco*

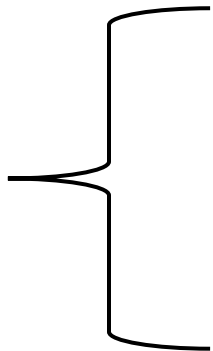


Distribution map of nuraghi in Sardinia



From Geoportale Nurnet

Nuragic age



Paleolithic	Lower		Rio Altana (?) Codrovulos (?)		450000-200000 B.C. (?) 200000-150000 B.C. (?)	
	Upper		Grotta Corbeddu		15000-11000 B.C.	
Mesolithic			Grotta Corbeddu		11000-6000 B.C.	
Neolithic	Early		Su Carroppu		6000-5300 B.C.	
			Filiestru - Grotta Verde		5300-4700 B.C.	
			Filiestru B			
	Middle		Bonu Ighinu		4700-4400 B.C.	
	Late		San Ciriaco		4400-4300 B.C.	
	Final		San Michele di Ozieri		4300-3800 B.C.	
Eneolithic (Copper Age)	Early		Sub Ozieri		3800-3000 B.C.	
				Filigosa		3500-2900 B.C.
				Abealzu		3300-2700 B.C.
	Full		Monte Claro		3100-2500 B.C.	
	Final			Beaker A ₁	2700-2200 B.C.	
				Beaker A ₂ (<i>Facies</i> , Sulcitana)		
Bronze Age	Early		Bonnannaro A ₁ Bonnannaro A ₂ Sant'Iroxi	Beaker B	2200-1900 B.C.	
	Middle	Initial	Sa Turrucula		Nuragic I	1900-1600 B.C.
		Full	Muru Mannu, San Cosimo Tamuli (?)		Nuragic II	
	Late	Recent	- <i>facies</i> "a pettine" (North Sardinia) - Antigori – Su Mulinu (South Sardinia)		Nuragic III	1300-1150 B.C.
		Final			Pre-geometric	Nuragic IV
	Iron Age	Early		I	Geometric	Nuragic IV Phoenician
Orientalizing					730-580 B.C.	
II				Archaic	Nuragic V	580-510 B.C.
	Late		Punic	510-238 B.C.		
				Roman	Republican	238-1 b.C.
				Roman	Imperial	1 d.C-476 d.C.

What are nuraghis? When and what were they built for?



- Majestic round dry-stone towers built all over the island by nuragic civilization during the Bronze age (from 1800 to 1200 b.C.)
- Used for civil purposes, that changed over time (houses, centre of social and politic life, ecc.)
- Nuraghis were part of a sistem created by nuragic communities in order to control their territory and its natural resources

Nuraghe Piscu, Suelli

Arcaic Nuraghi or Protonuraghi or Corridor nuraghi



Fronte Mola - Thiesi

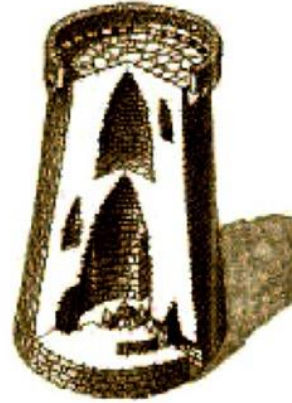


Friarosu - Mogorella



Corongiu 'e Maria- Nurri

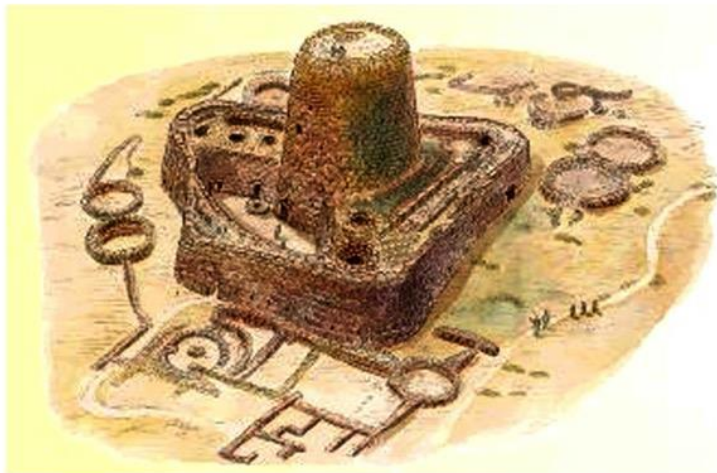
Nuraghi *a tholos*



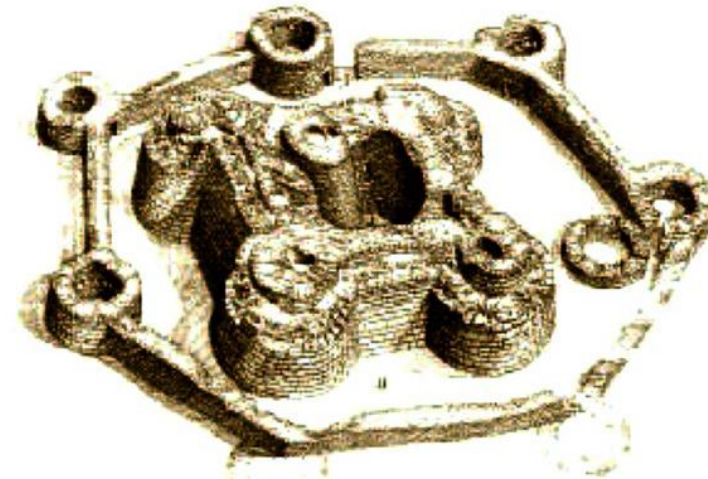
S. Sabina - Silanus



Palmavera - Alghero



Santu Antine- Torralba



Su Nuraxi- Barumini

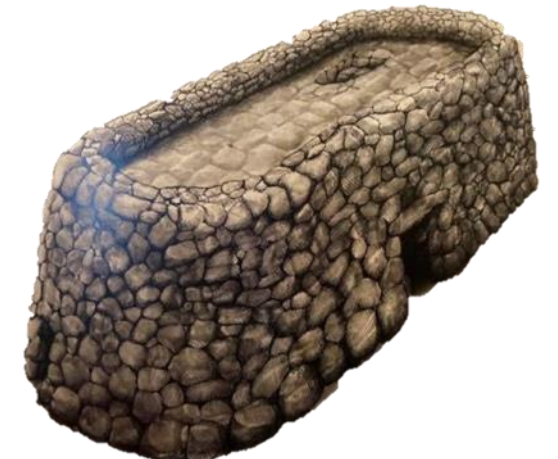
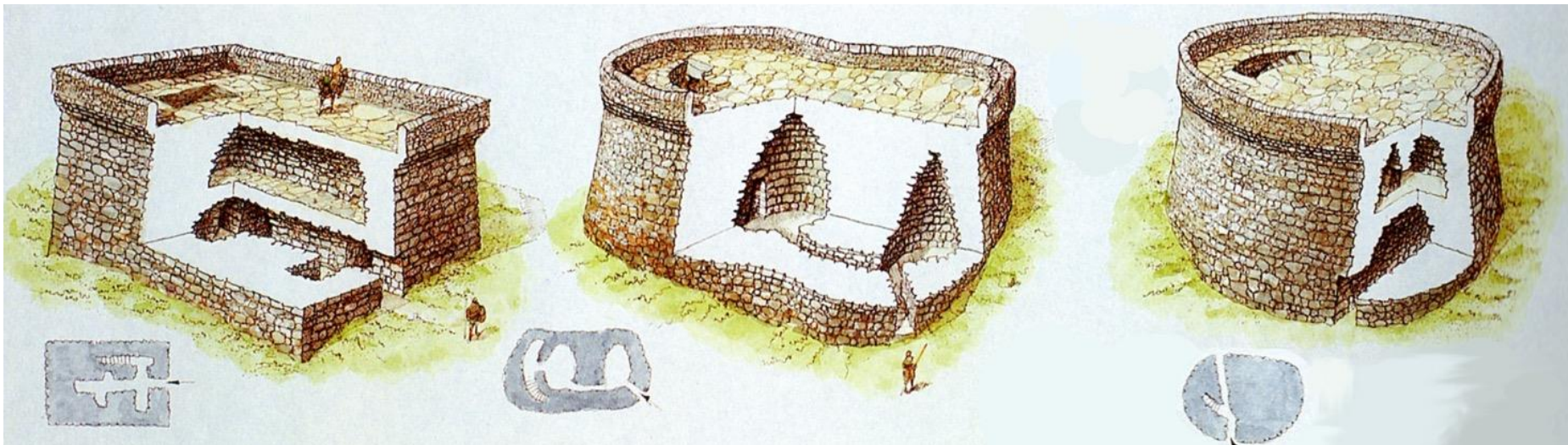
The protonuraghi

Middle Bronze age (1700-1500 a.C.)

- First nuragic buildings
- Dry-stone towers with different shapes, with only a corridor inside



Albucciu, Arzachena

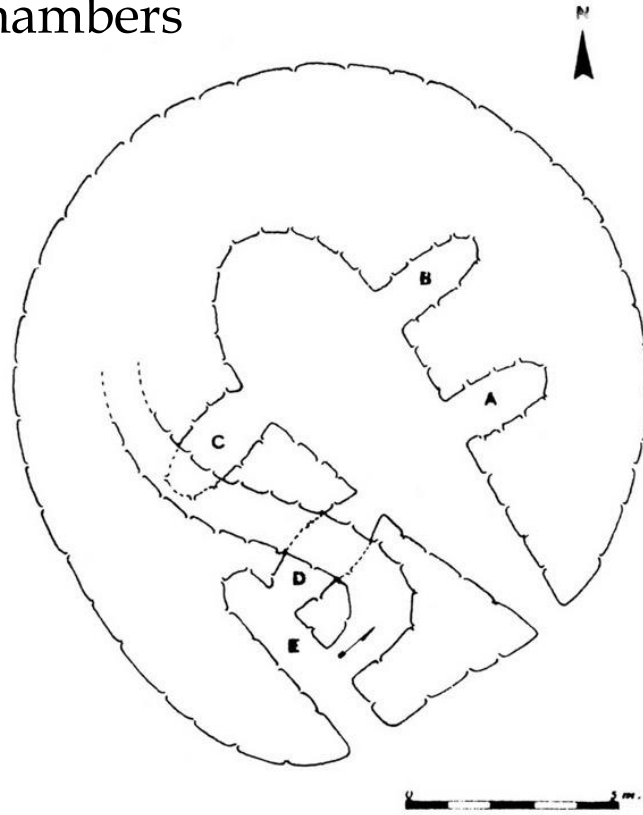


Protonuraghe Fronte 'e mola-Thiesi (SS)



Transition Nuraghi «a camera naviforme»

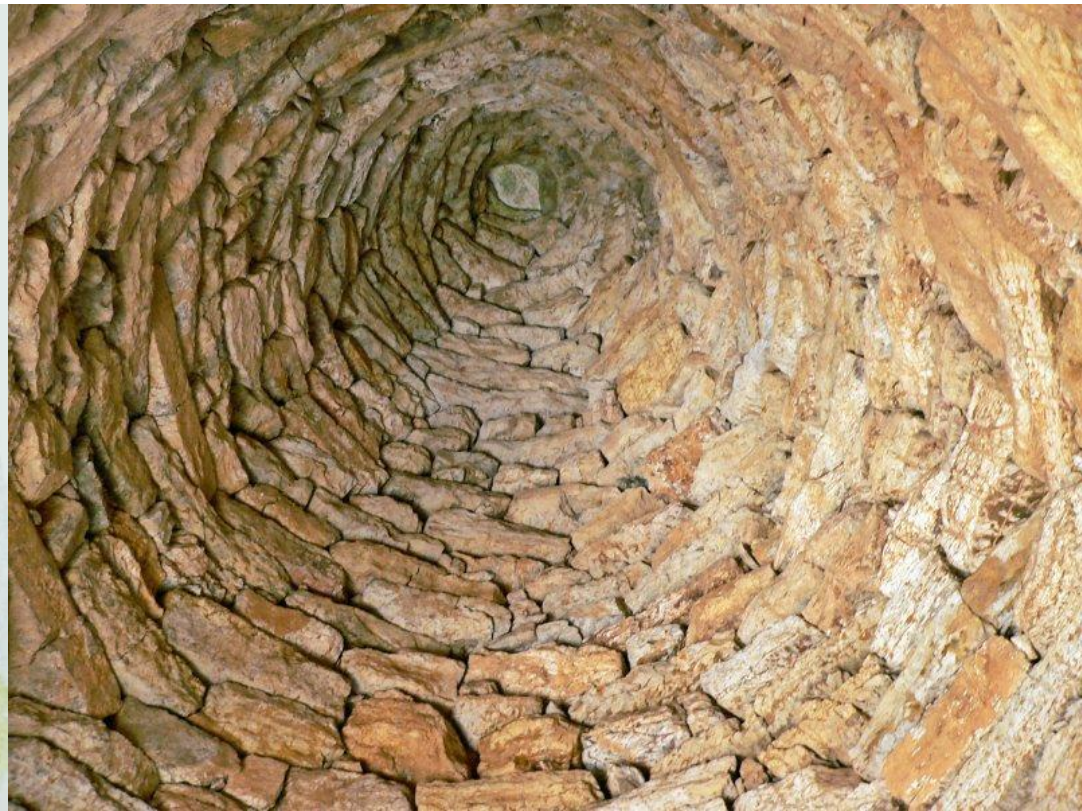
Nuraghis that start to change their internal space from corridors to chambers



Nuraghe Crastu
(Soddì)

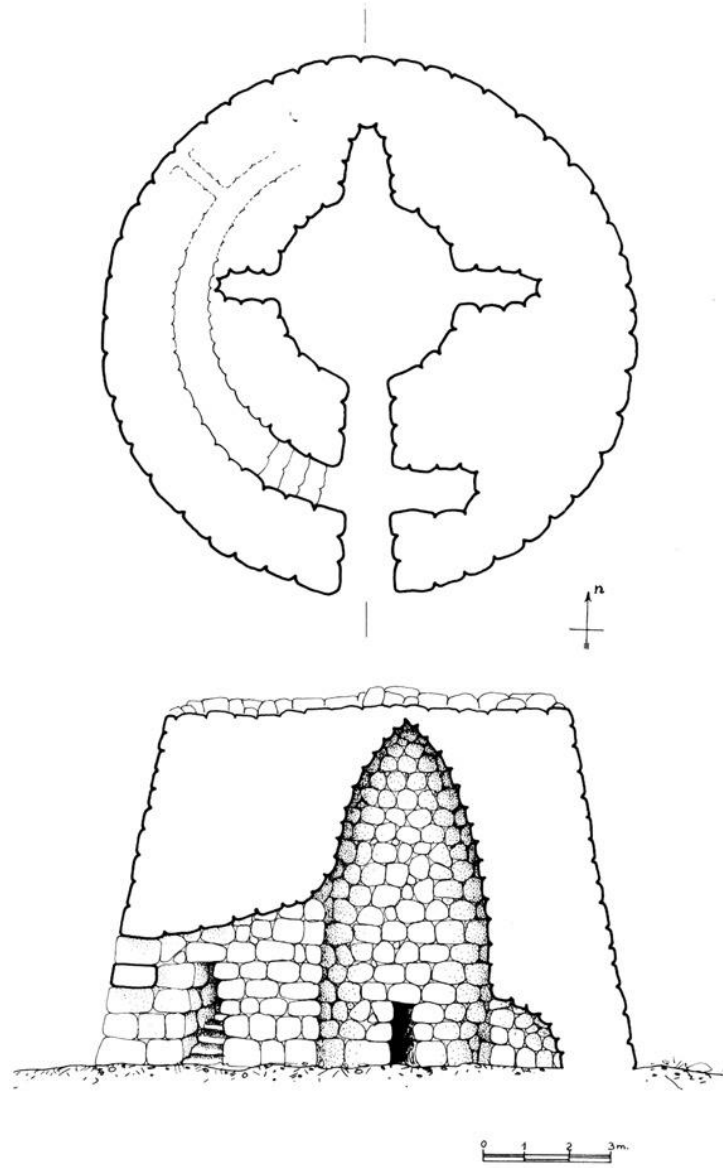


Classic single tower or tholos nuraghi



Nuraghe Ponte, Dualchi (NU)

Single tower nuraghi



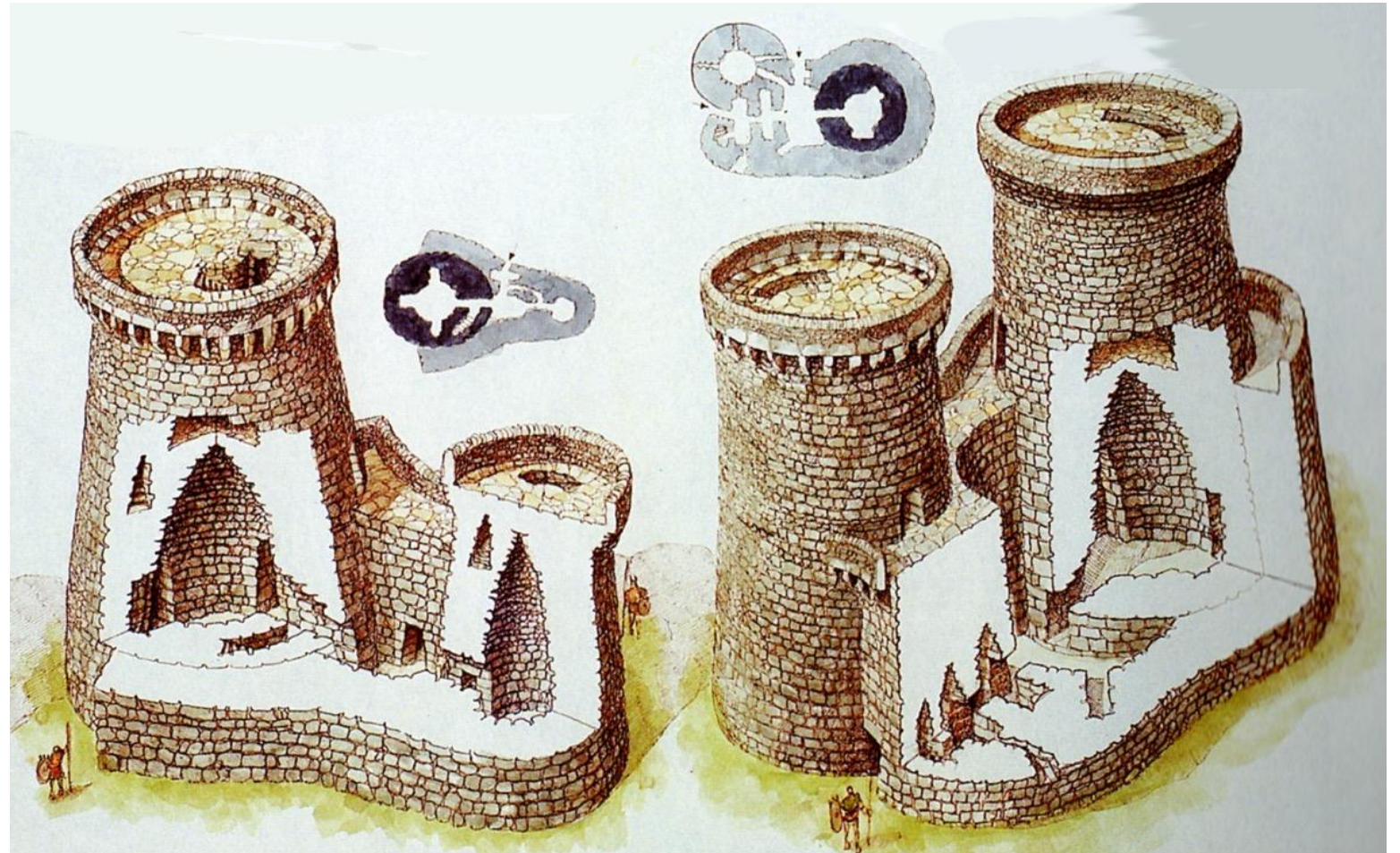
Santa Sarbana, Silanus (NU)

Mixed type nuraghi: Albucciu-Arzachena



Complex or multitower nuraghi

- From 2 to 5 towers added around a main one
- Originally designed with many towers or transformed
- Recent Bronze Age



Complex nuraghi



Nuraghe Losa, Abbasanta (OR)



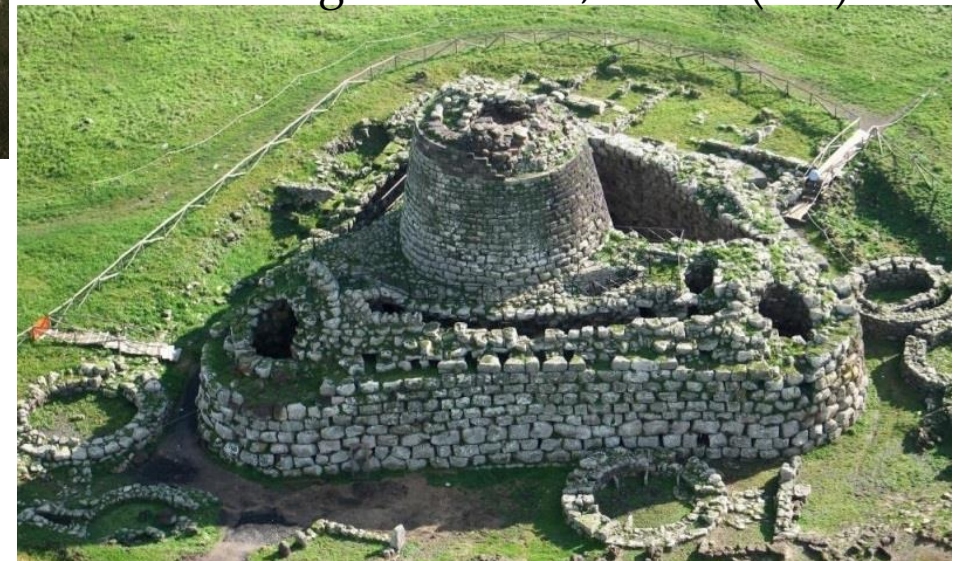
Nuraghe Nolza, Meana (NU)



Nuraghe Arrubiu, Orroli (CA)



Nuraghe Su Nuraxi, Barumini and Santu Antine, Torralba (SS)



The villages

- Villages mainly built around nuraghi, but also independent
- Different shaped huts (circular, elliptic)
- Temples
- Buildings related to productive activities





**Village and nuraghe La Prisgiona-Arzachena, Su Nuraxi-Barumini,
Genna Maria-Villanovaforru**

The preserved hut of S'Urbale, Teti, Final Bronze age

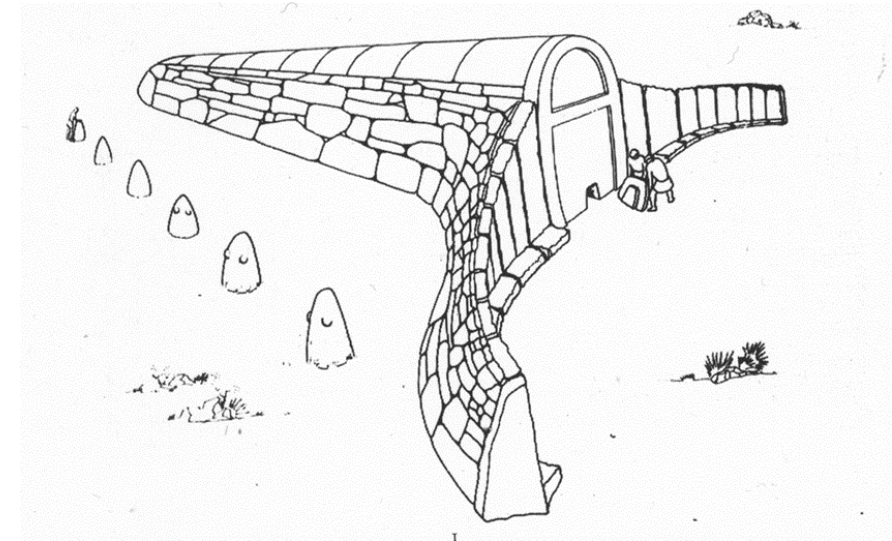


The funerary environment: the Giant's tombs



- Collective tombs
- From Middle to Recent Bronze age (1800 a.C.-1200 b.C.)
- Two types, with big stone slabs («a ortostati») and with stone rows («a filari»)
- No grave goods
- No difference for social status

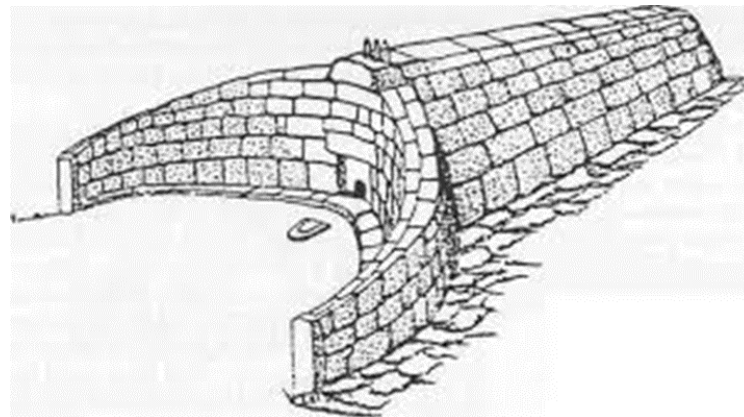
Ortostati Tombe: S'Ena 'E Thomes-Dorgali



«A filari» Giant's tombs

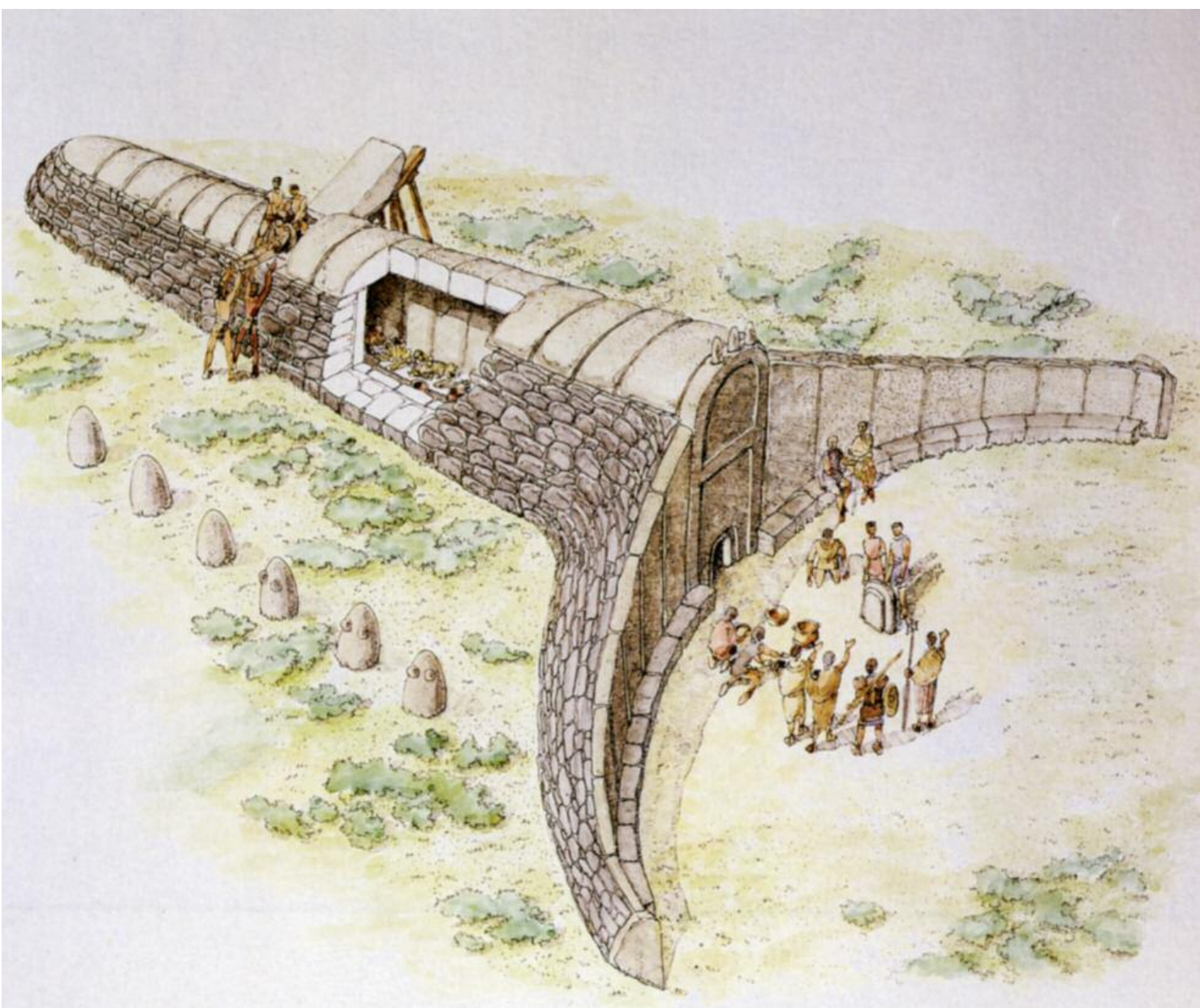


Madau Tomb, Fonni (NU)



Sa Domo 'e s'orcu, Siddi (CA)

Death rituals and funerals



Idealized reconstruction of burials

Cultural places and temples

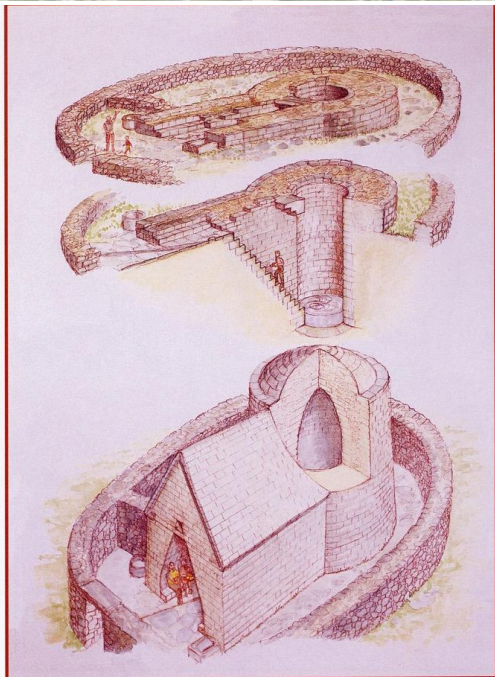
- Sacred wells
- Sacred springs
- Megaron temples
- «Rotonde»
- Other temples
- Sanctuaries



Sa Testa, Olbia



Santa Cristina, Paulilatino



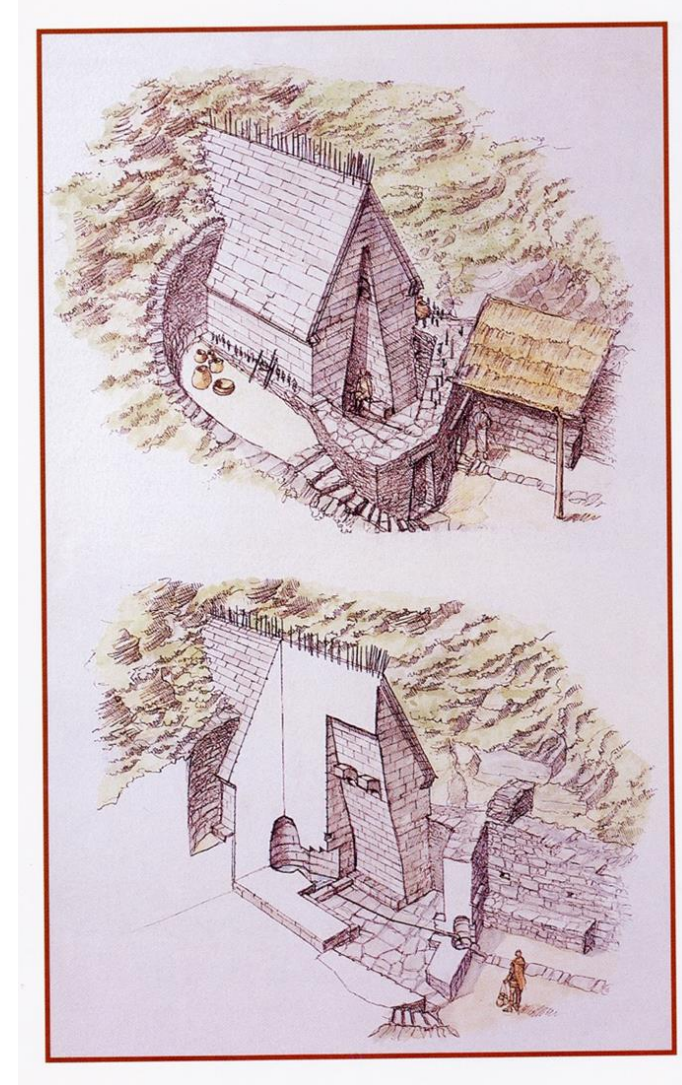
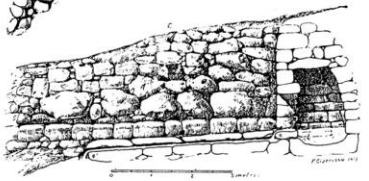
Santa Vittoria, Serri



Sacred springs



Su Lumarzu-Bonorva



Su Tempiesu-Orune

The megaron temples



Janna 'e Pruna, Irgoli



Sos Nurattolos, Alà dei Sardi



Domu de Orgia, Esterzili

Nuraghi converted to temples



Nurdole, Orani

**Su Mulinu,
Villanovafranca**

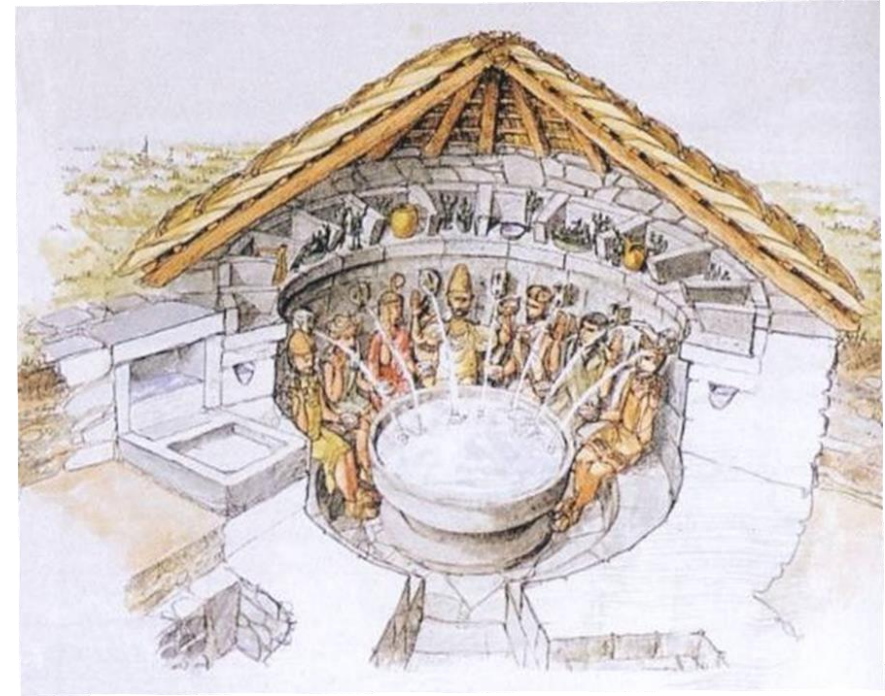
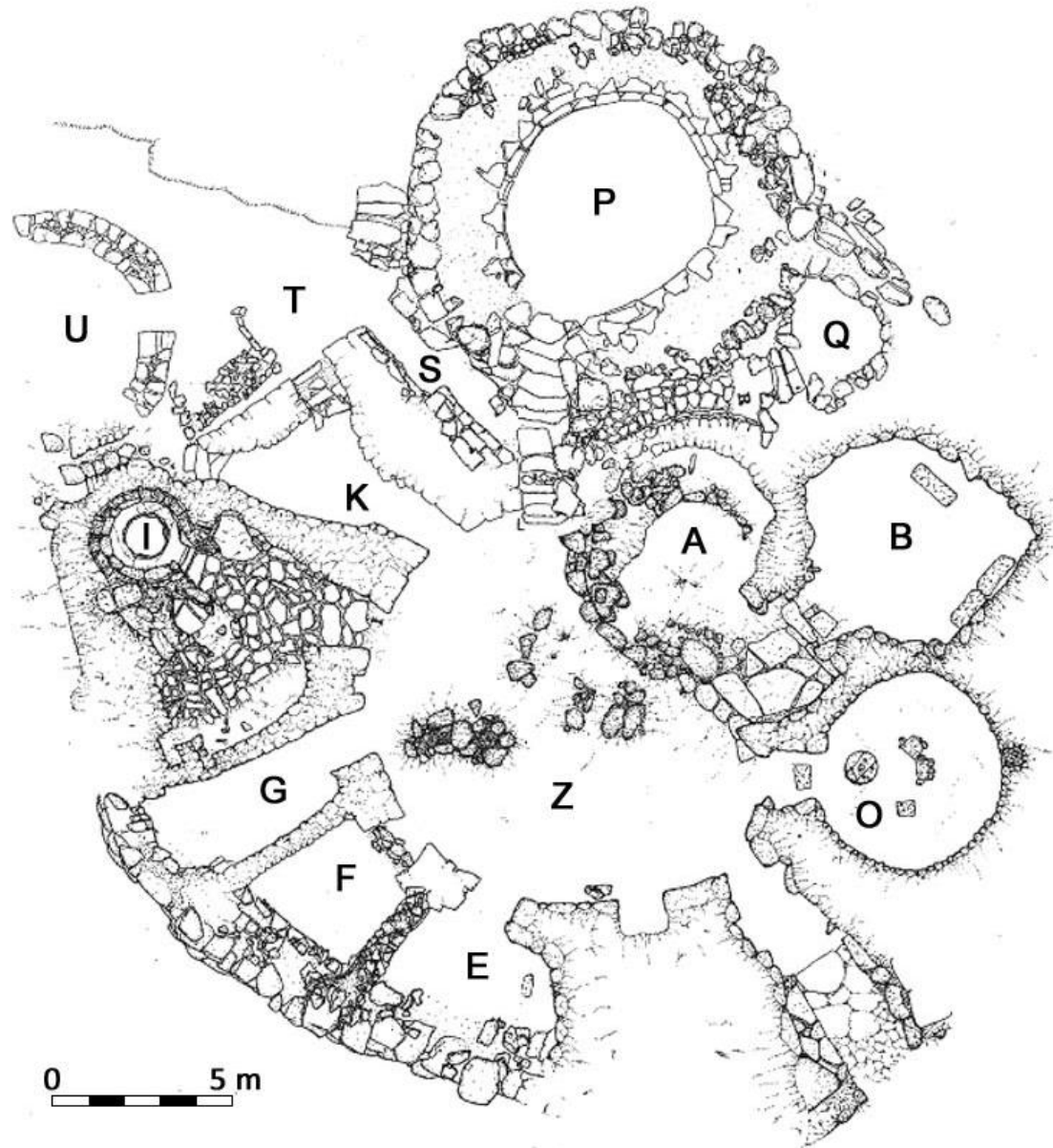


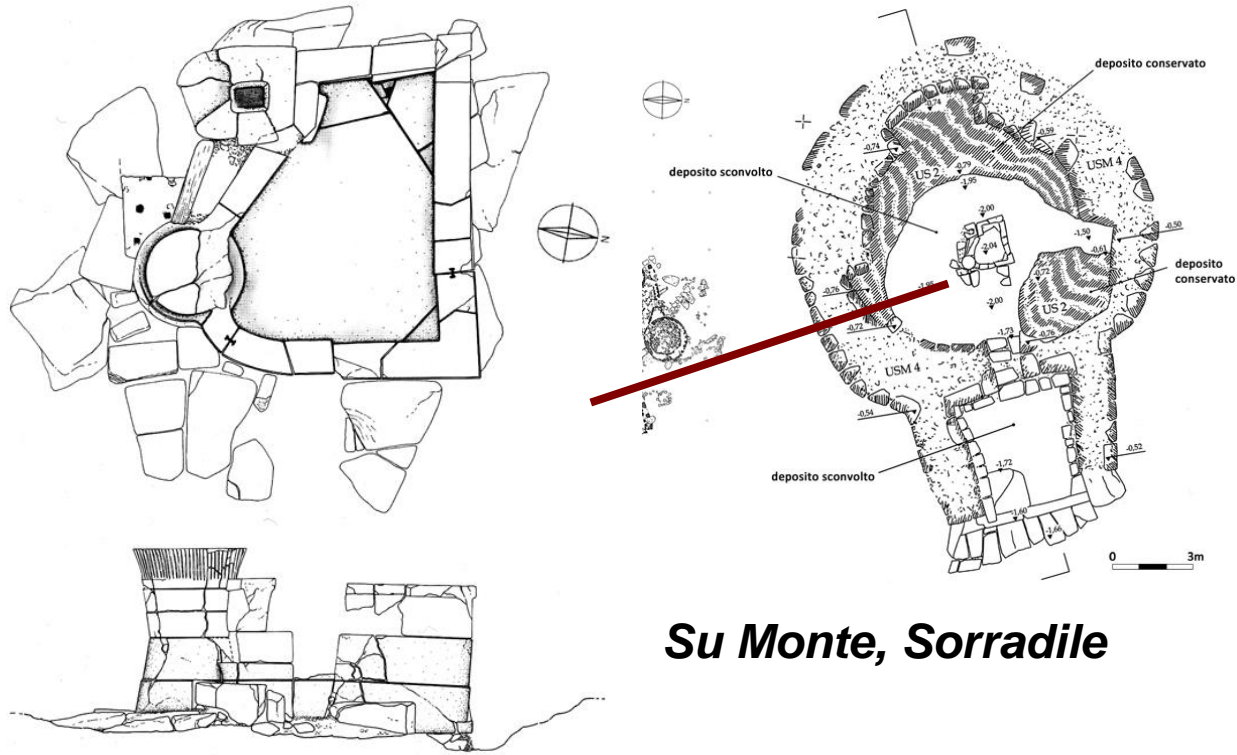
The sanctuaries

- Aggregation of different temples (sacred wells, megaron, other)
- Buildings related to cults and offerings
- Houses for pilgrims accommodation
- Votive offerings
- Related to more than one community
- Federal cultural places, center of politic and social decision



Sa Sedda 'e sos Carros, Oliena (NU)





Su Monte, Sorradile



S'Arcu 'e is Forrus Villagrande Strisaili



Su Mulinu Villanovafranca

Middle and Recent Bronze age pottery



Final Bronze and Iron age pottery



Bronze metallurgy

Bronze casting



Lost wax casting



Bronze weapons and tools



Other bronze artifacts



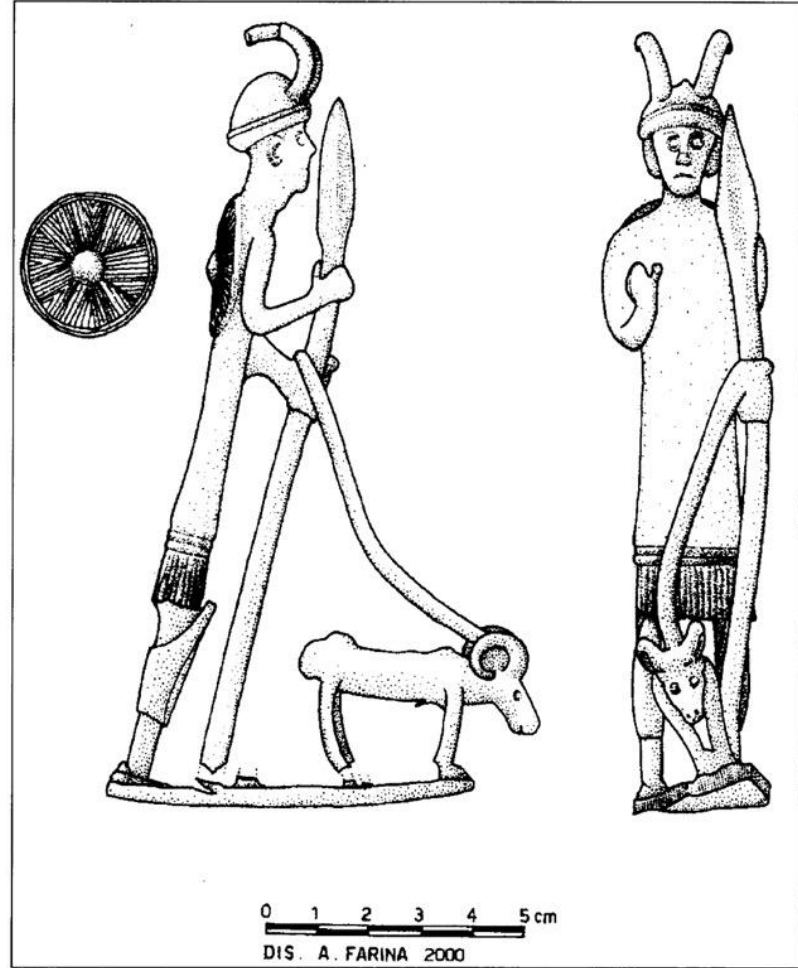
The bronze figurines

- Small figurines made with lost wax technique
- Found in cultural places
- Votive offers, ex-voto











Bronze ship figurines



Nuraghe's bronze figurines



Nuraghe models or statues



Monte Prama site and statues



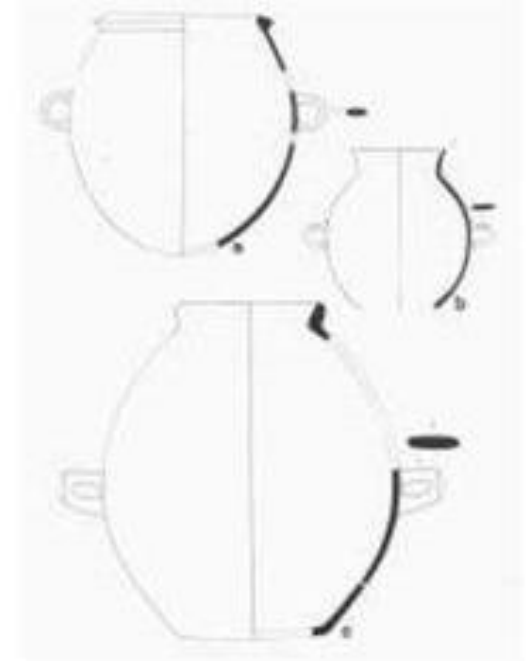
Sardinian evidences in Crete and Cyprus



Creta



A



B

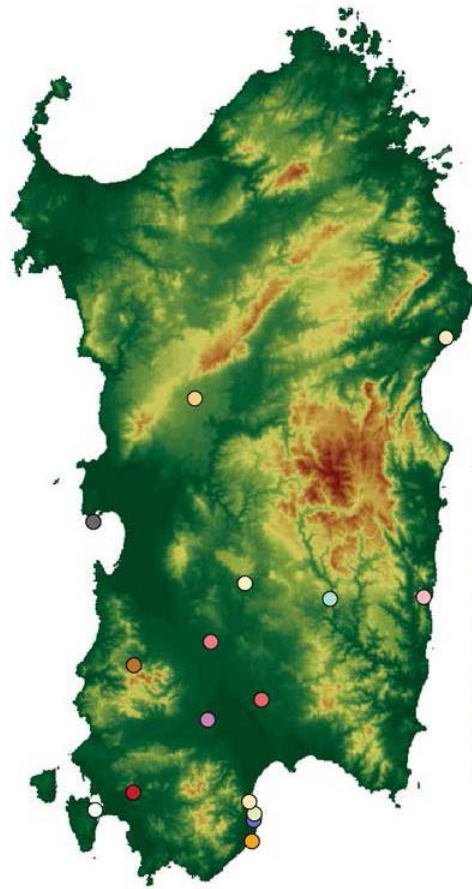
Livello del XIII sec. a.C.



Cipro

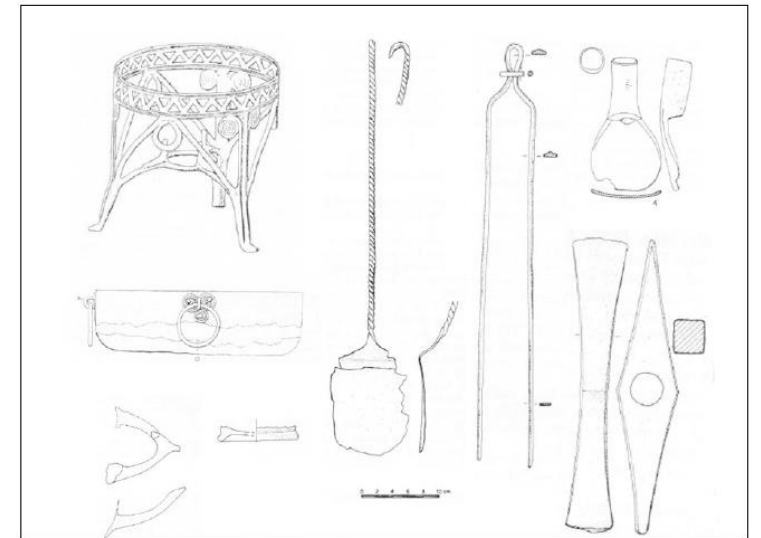
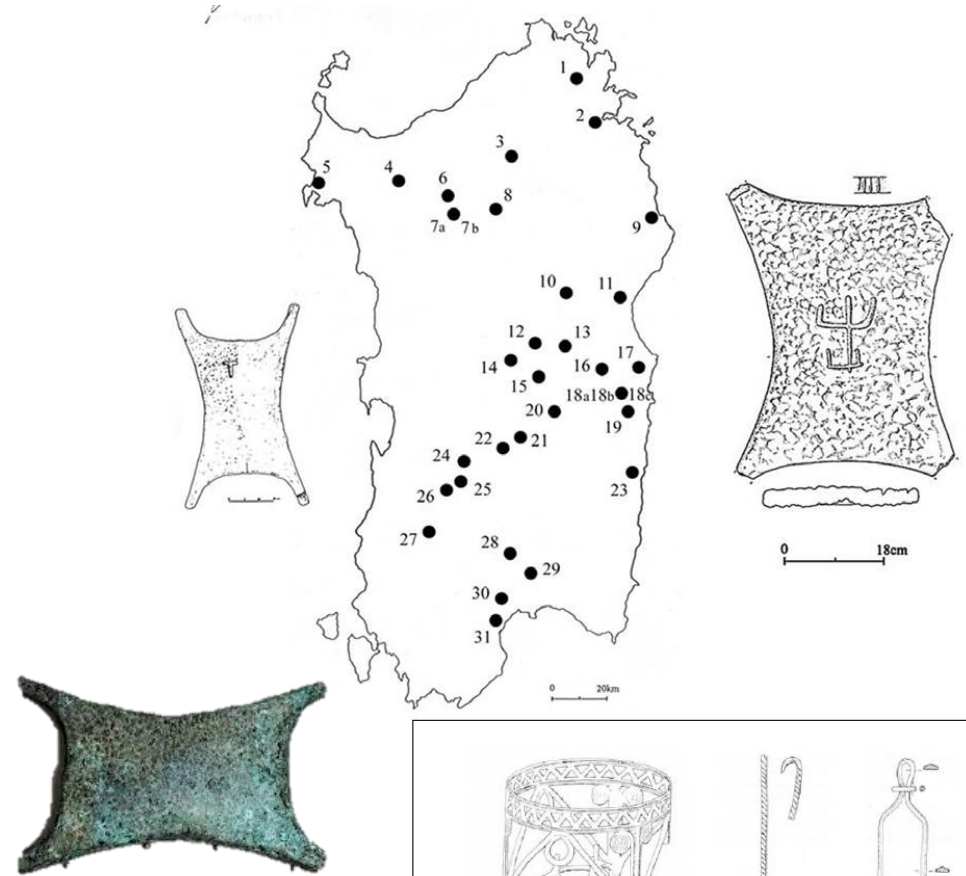
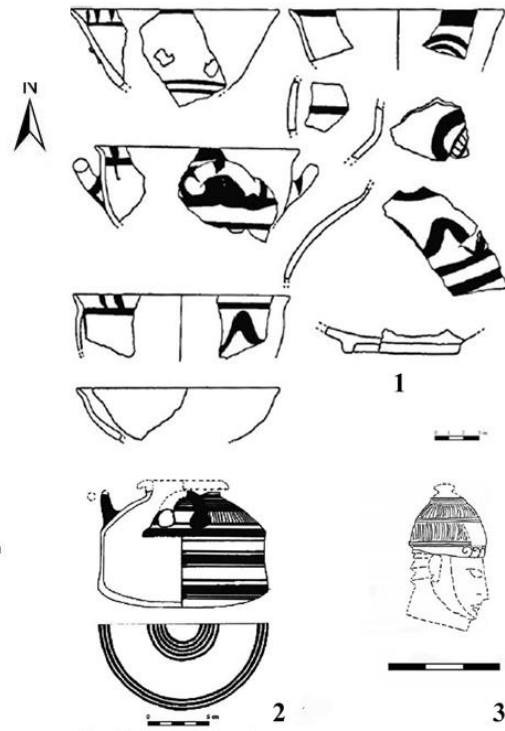


Aegean and cypriot evidences in Sardinia



Legend

- Nastasi
- Orosei
- Antigori
- Sa_domo_e_s_orku
- Su_Nuraxi
- Arrubiu
- Mitza_Purdia
- Corti_Beccia
- Duos_Nuraghes
- Nora
- Monti_Zara
- Medau_is_Lais
- Is_Baccas
- San_Cosimo
- Tharros
- Sulky



Map of the micenean finds in Sardinia (Soro 2009, Fig.1): 1. Pottery from nuraghe Antigori di Sarroch, 2. Alabastron from nuraghe Arrubiu di Orroli, 3. Ivory head from Decimoputzu (Soro 2011, p. 291), 4. Ox-hide copper ingots in Sardinia (Lo Schiavo et al. 2008, Figg. 3-4,1), 5. Imported bronze artifacts and possible cypriot influence on nuragic bronze metallurgy

Relationship and contacts between Sardinia and Iberian peninsula

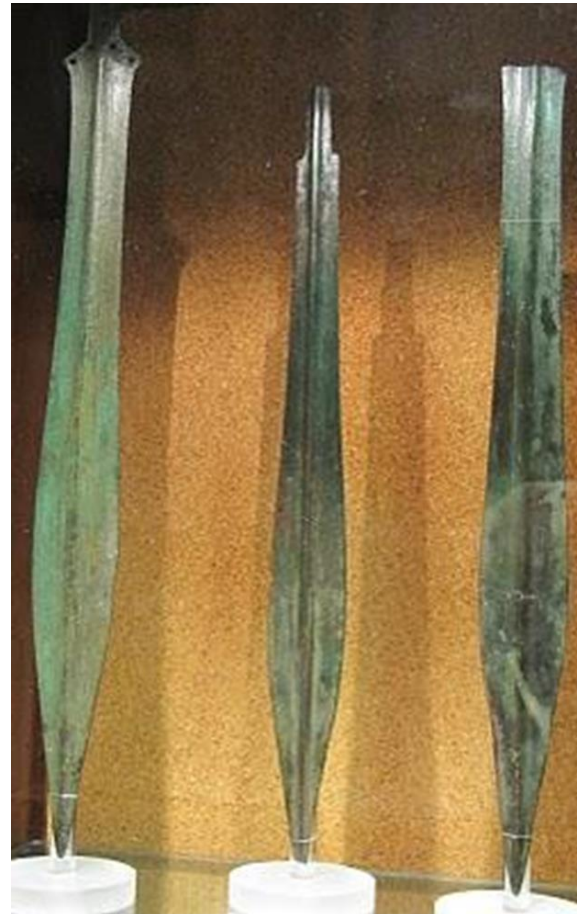
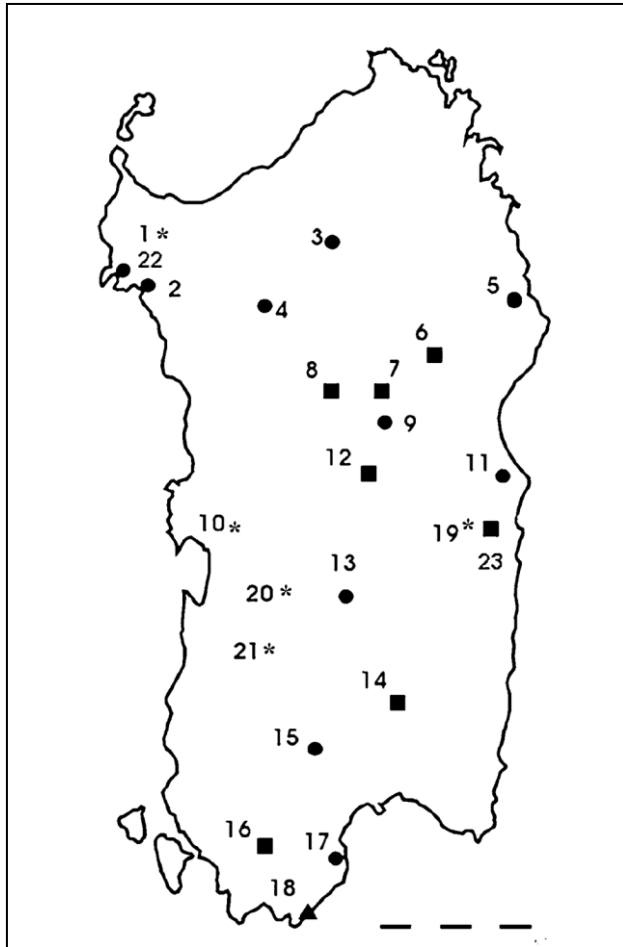


Più di 332 tra frammenti e vasi interi databili tra X e VII sec. a.C

1. Huelva, 2. El Carambolo (Siviglia), 3-4. Cadice e Castillo de Doña Blanca, 5. Malaga, 6. Toscanos, 7. Chorreras, 8. Cartagena 9. Aldovesta (Benifallet), 10. Los Llanos (Madrid), 11. Cueva de Gorham (Gibilterra)



Iberic bronzes in Sardinia



1 Nurra, 2. Flumenelongu-Alghero, 3. Tula, 4. Bonnanaro, 5. Siniscola, 6. Su Tempiesu-Orune, 7. Orani, 8. Bolotana, 9. Sarule, 10. Oristano, 11. Ogliastra, 12. Abini-Teti, 13. Forraxi Nioi-Nuragus, 14. S. Andrea Frius, 15. Monte Sa Idda-Decimoputzu, 16. Grotta Pirusu-Santadi, 17. Monte Arrubiu-Sarroch, 18. Bithia, 19. Sa Carcaredda-Villagrande Strisaili, 20. Brunku 'e s'Omù-Villaverde, 21. S. Maria de Urgu- S. Gavino, 22. S. Imbenia-Alghero, 23. S'Arcu 'e is Forros-Villagrande Strisaili.

●Ripostiglio ■Tempio ▲Tomba *Imprecisabile

Più di 100 manufatti di bronzo tra spade, asce e strumenti
Databili tra XI e VIII a.C.

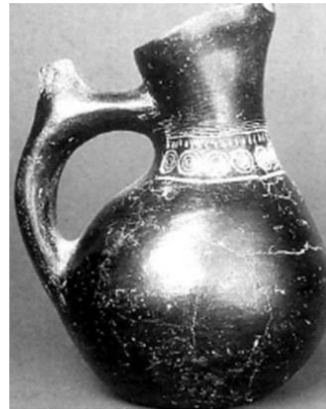
Contacts with the Italian peninsula



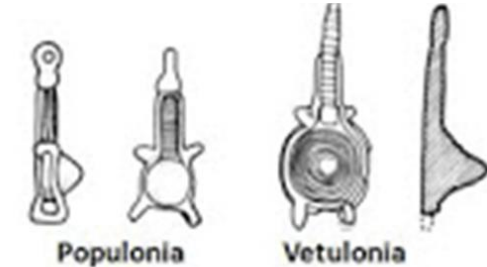
Navicella da Vetulonia



Navicella da Montevetrano



Un "askos" di Vetulonia



Bottoni da Populonia e Vetulonia



Bronzetto da Vulci

Testimonianze nella penisola:

1. Bologna, 2. Pisa, 3. Montaiione, 4. Populonia, 5. Vetulonia, 6. Rosello, 7. San Feliciano, 8. Marcellano, 9. Vulci, 10. Tarquinia, 11. Cerveteri, 12. Veio, 13. Portus, 14. Cuma, 15. Pontecagnano, 16. Crotone

Thank you for your attention