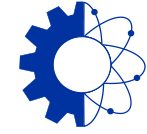


TECHNICAL GALLERIES
CONSOLIDATION



ENGINEERING
DEPARTMENT

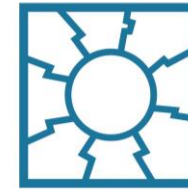
Technical Galleries Consolidation Program

Priorities in terms of integration

Integration meeting on February 23rd, 2023

S. EVRARD

Reminder from September 2022



TECHNICAL GALLERIES
CONSOLIDATION

Next galleries targeted



TECHNICAL GALLERIES
CONSOLIDATION

- Gallery 825 is the top priority, especially its West part between B. 188 and 192, including intersections
- Motivation: Superheated circuit replacement next Summer.



Next galleries targeted

After galleries 835 and 825, works are planned in galleries:

- Galleries 836, 827 as of November '22 (old chilled water network dismantling)
- Motivation: Superheated circuit replacement in 836 next Summer.



2/22/2023

TG-CONS

4



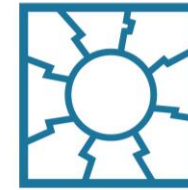
2/22/2023

TG-CONS

3



Update of integration priorities



TECHNICAL GALLERIES
CONSOLIDATION

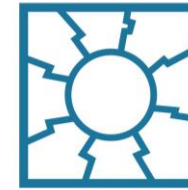
It is now time to review our priorities

- **Work oriented decision-making process and definition**
- **Visibility for the whole year 2023 for the design offices**
- **In line with Project 2023 road map presented @ PT21**

- **Already presented at Coordination meeting # 11 for info**
- **Today, collection of feedbacks from the various design offices**
- **The dates mentioned are tentative proposals and not binding deadlines**
- **Inputs from design offices and integration team are necessary to confirm /modify the proposals and adapt resources if needed.**



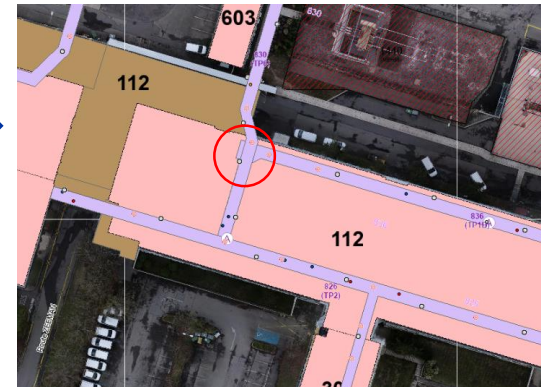
Milestones proposal – chronological order



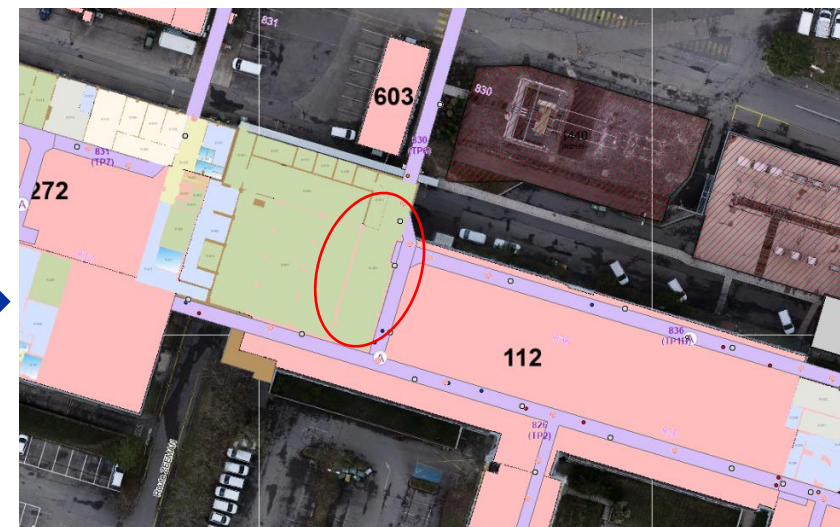
TECHNICAL GALLERIES
CONSOLIDATION

RE= Reverse Engineering, FC = Future Configuration, AB = As-Built

Activity	Milestone	Date	Gallery	Location
RE	Delivery	22/2/23	836	Corner GT836
FC	Validation	23/2/23	825	b.188-b.35 (with branch)
RE	Validation	23/2/23	836	Corner GT836
FC	Delivery	2/3/23	836	Corner GT836
RE	Delivery	9/3/23	836	112/S-403
FC	Validation	9/3/23	836	Corner GT836
RE	Validation	23/3/23	836	112/S-403
FC	Delivery	23/3/23	836	112/S-403
FC	Validation	6/4/23	836	112/S-403
RE	Delivery	6/4/23	826	whole
RE	Validation	20/4/23	826	whole
FC	Delivery	20/4/23	826	whole

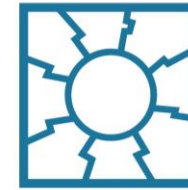


826 whole



Courtesy: Iga Maria Krautztrung

Milestones proposal – chronological order



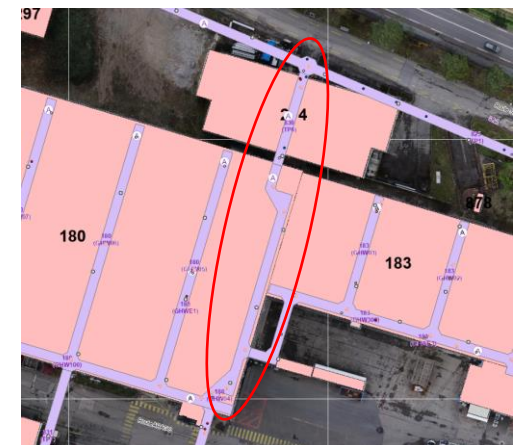
TECHNICAL GALLERIES
CONSOLIDATION

RE= Reverse Engineering, FC = Future Configuration, AB = As-Built

Activity	Milestone	Date	Gallery	Location
FC	Validation	4/5/23	826	whole
RE	Delivery	4/5/23	830*	Cross GT830-GHW100 & Cross GHW11 and corridor GHW11
RE	Validation	18/5/23	830*	Cross GT830-GHW100 & Cross GHW11 and corridor GHW11
FC	Delivery	18/5/23	830*	Cross GT830-GHW100 & Cross GHW11 and corridor GHW11
RE	Delivery	1/6/23	830	Cross GHW100 up to GT825 (b.274)
FC	Validation	1/6/23	830*	Cross GT830-GHW100 & Cross GHW11 and corridor GHW11
RE	Validation	15/6/23	830	Cross GHW100 up to GT825 (b.274)
FC	Delivery	15/6/23	830	Cross GHW100 up to GT825 (b.274)
RE	Delivery	29/6/23	830	Under b.183
FC	Validation	29/6/23	830	Cross GHW100 up to GT825 (b.274)
RE	Validation	13/7/23	830	Under b.183
FC	Delivery	13/7/23	830	Under b.183
FC	Validation	27/7/23	830	Under b.183



Cross GHW11 and corridor GHW11

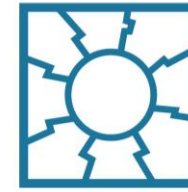


Cross GHW100 up to GT825 (b.274)

* Not gallery 830 but to be done chronologically together with gallery 830 (for the moment included in 830 tab in Detailed Schedule)

Courtesy: Iga Maria Krautzstrung

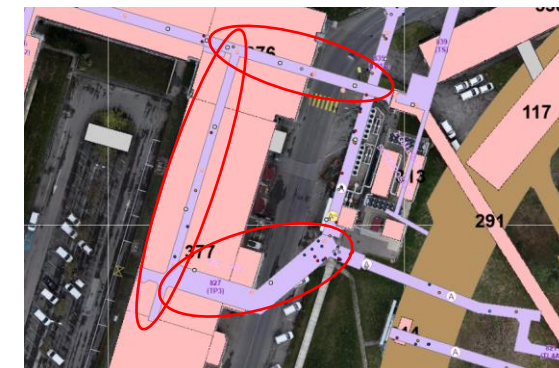
Milestones proposal – chronological order



TECHNICAL GALLERIES
CONSOLIDATION

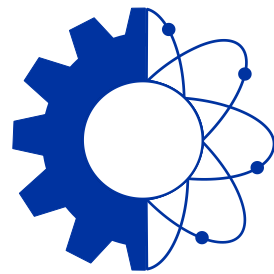
RE= Reverse Engineering, FC = Future Configuration, AB = As-Built

Activity	Milestone	Date	Gallery	Location
RE	Delivery	27/7/23	825	b.35-b.110 (with cross next to b.110 and branch)
RE	Validation	10/8/23	825	b.35-b.110 (with cross next to b.110 and branch)
FC	Delivery	10/8/23	825	b.35-b.110 (with cross next to b.110 and branch)
RE	Delivery	24/8/23	825	b110-GT835
FC	Validation	24/8/23	825	b.35-b.110 (with cross next to b.110 and branch)
RE	Validation	7/9/23	825	b110-GT835
FC	Delivery	7/9/23	825	b110-GT835
RE	Delivery	21/9/23	825	b110-GT835
AB	Delivery	21/9/23	827	whole
AB	Validation	5/10/23	827	whole
AB	Delivery	?	830	GT 836 - b.180
AB	Validation	?	830	GT 836 - b.180



Courtesy: Iga Maria Krautztrung

827 whole



**ENGINEERING
DEPARTMENT**