

# ALICE Grid Operations

**Lola Saiz Santos**  
**Maarten Litmaath**

9<sup>th</sup> march 2011

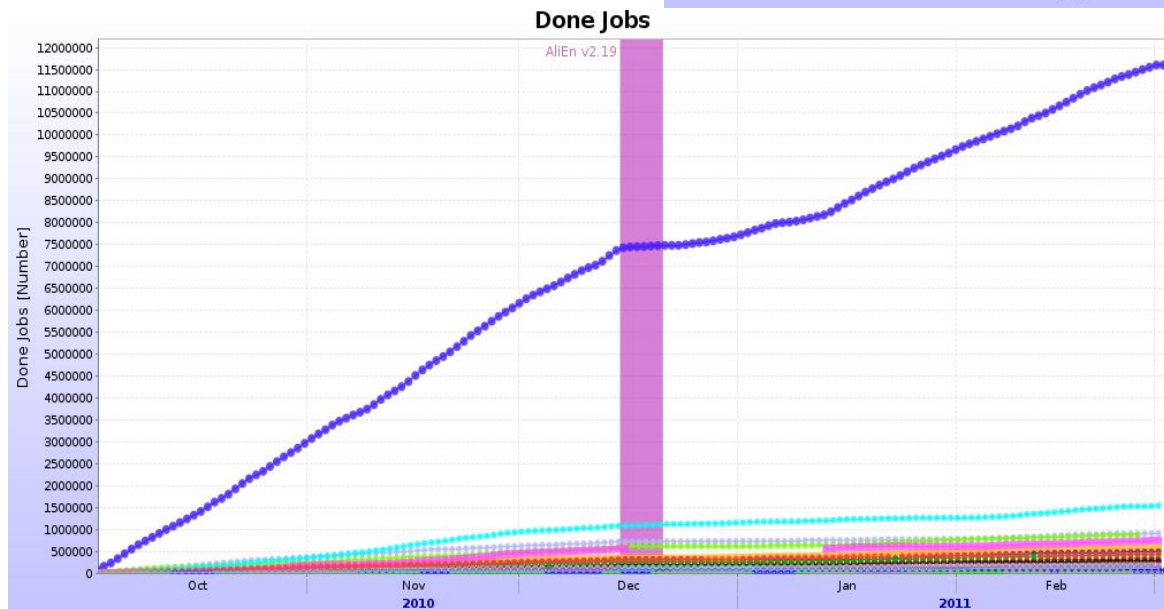
1

# Index

- Data taking 1st Oct 2010- 1st March 2011
- Operational Issues
  - Quattor managed machines
  - Upgrade to gLite-VOBOX 3.2.9
  - Xrootd servers upgrade
  - CAF nodes extension
  - Cluster Monitor issues
  - AFS to Torrent
  - SAM - NAGIOS
- Current & Future Plans

# Jobs

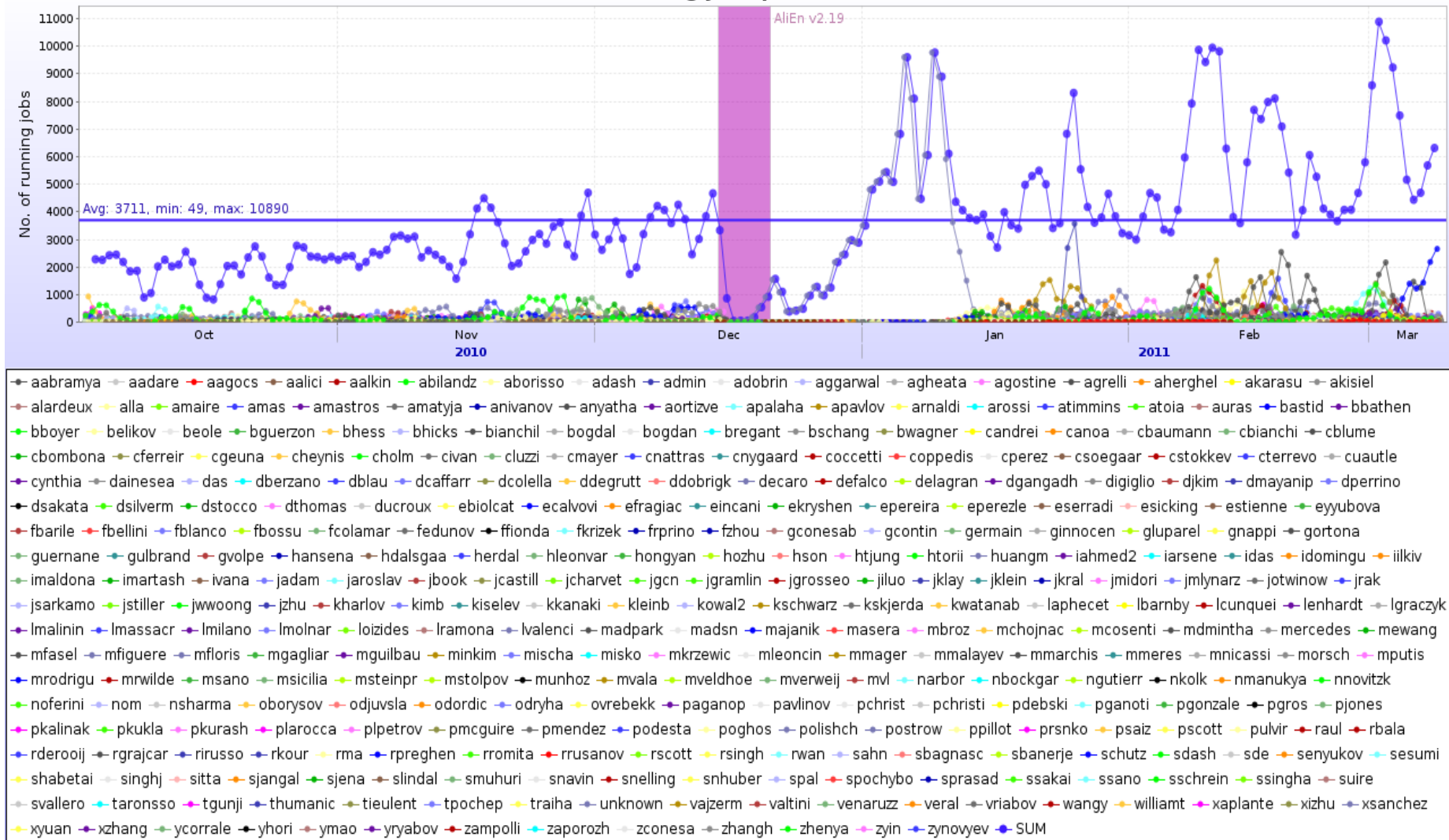
- Peaks of ~30K jobs
- Average of ~17K jobs



-12 million successful jobs

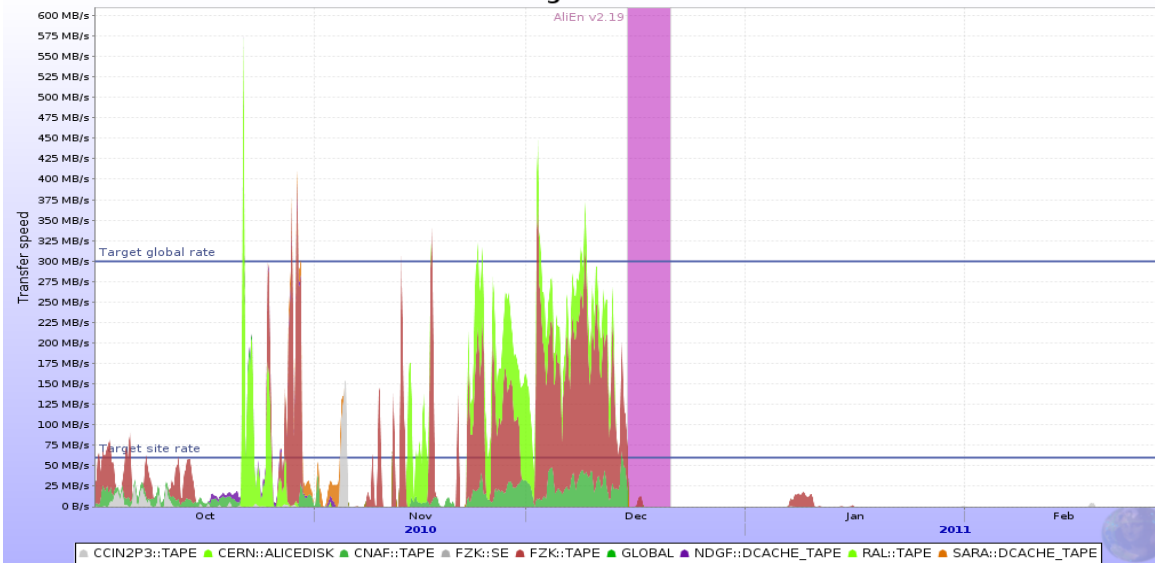
# Chaotic user jobs

Running jobs per user



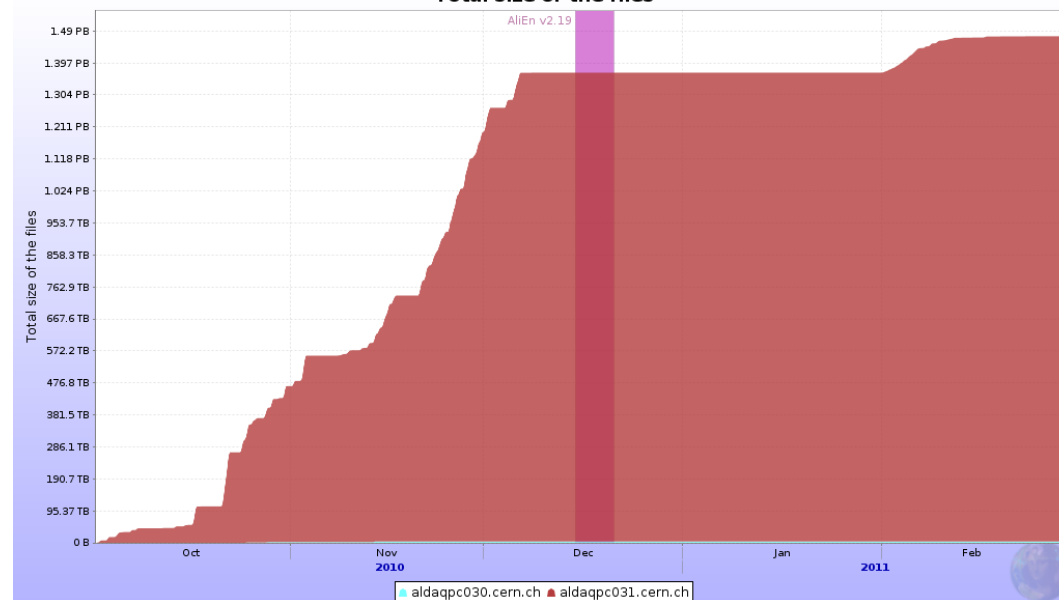
# Raw Data Transfers

SEs average transfer rates



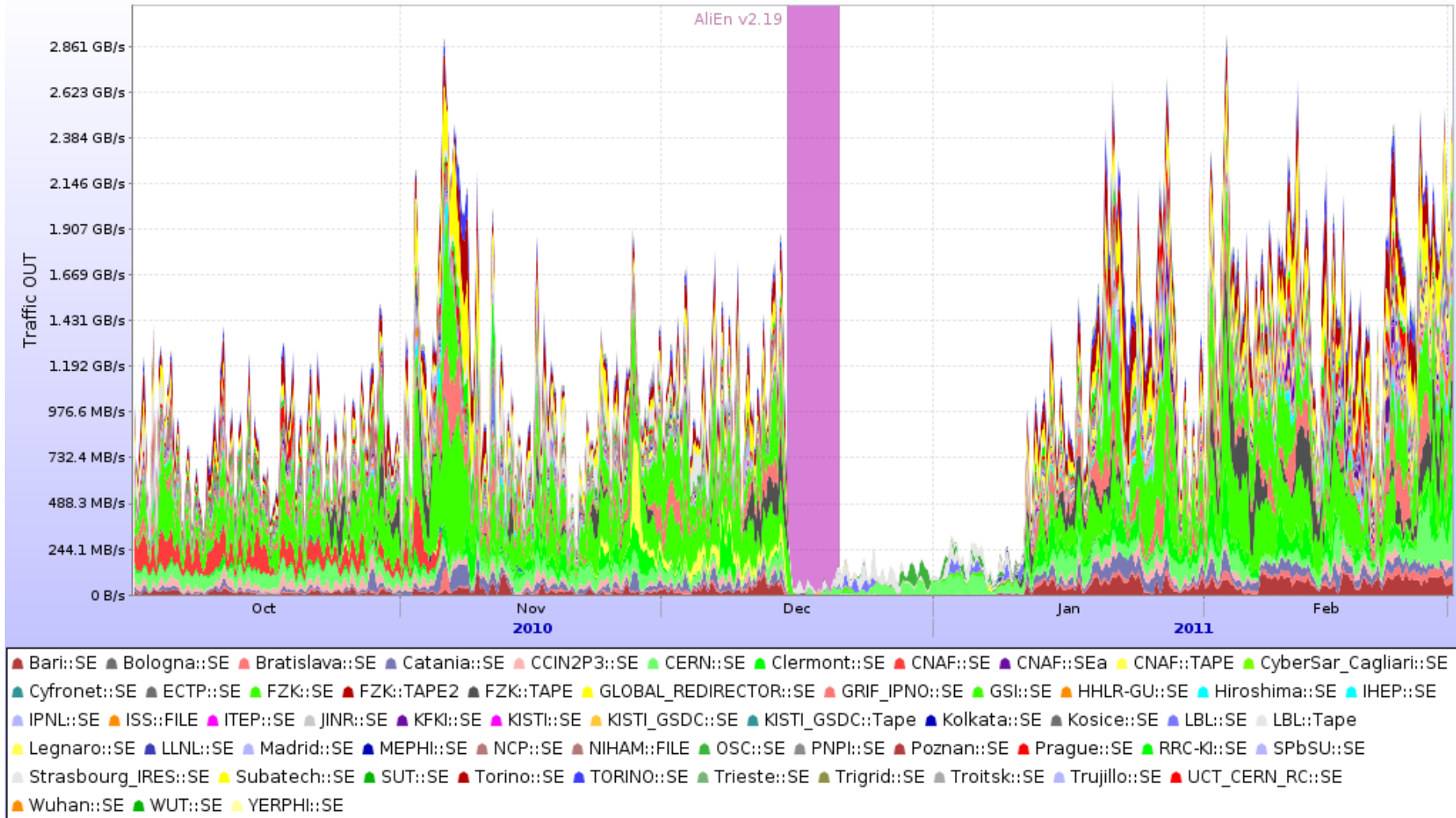
-Peaks of 450MB/s  
-P+P and Pb+Pb  
280+750 TB transfer

Total size of the files

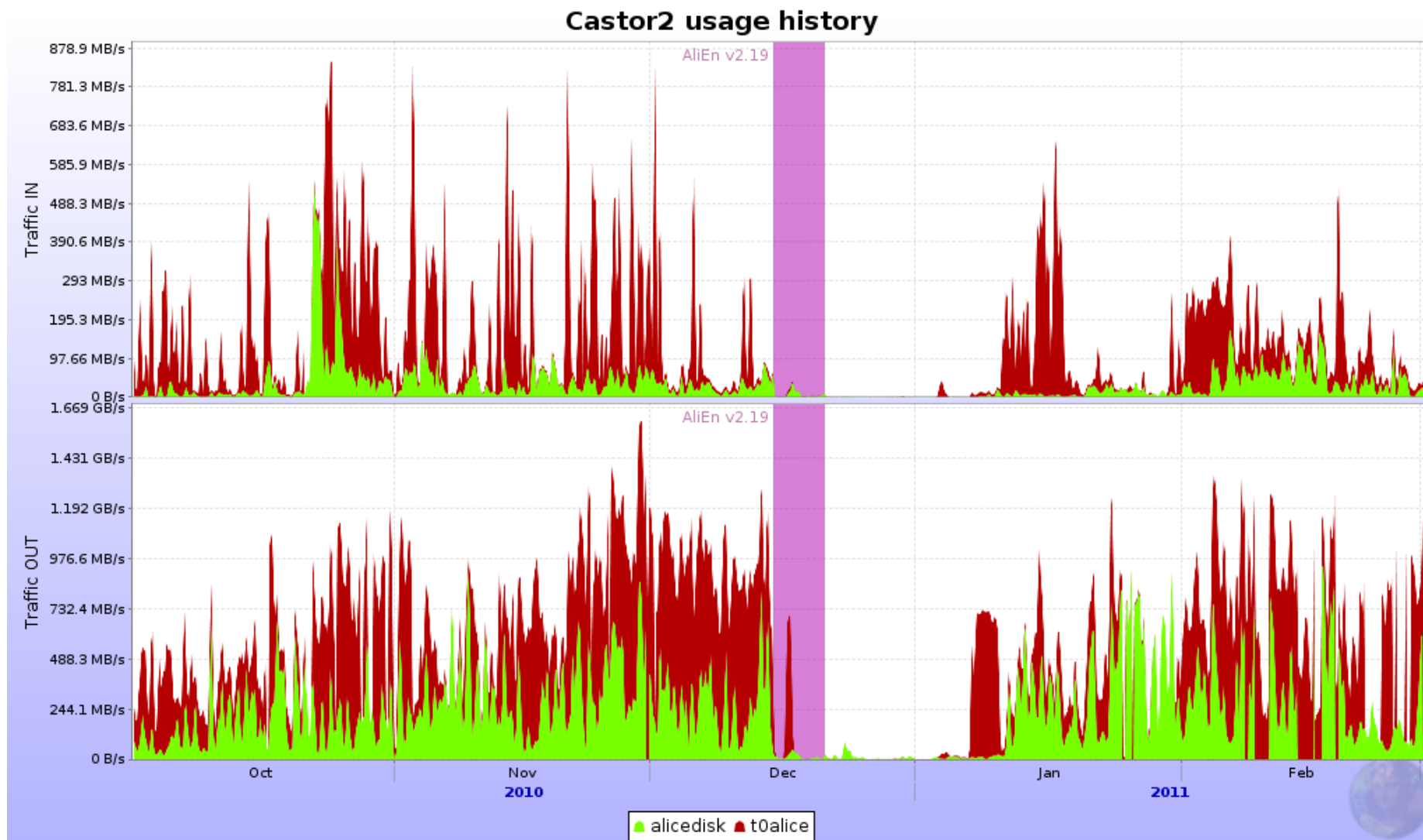


# User Analysis SE

Aggregated network traffic per SE



# CASTOR Usage





# Operational Issues

- Improve maintainability of Quattor managed machines
  - Modular template system
  - Increase the Quattor template intelligence
- Upgrade to gLite-VOBOX 3.2.9
- Upgrade xrootd servers at CERN (voalicefs01-05)
  - SLC4 to SLC5
  - Quattor managed
  - Machines with crucial data that must be preserved
  - Many thanks to IT-DSS and IT-CF

Successful Operation!!
- CAF extension
  - 16 new nodes



# Operational Issues

- Cluster Monitor issues
- AFS to torrent
  - Reasons:
    - AFS performance issues
      - Jobs were found using the r/w instead of the r/o volume
    - Synchronization problems
  - Testing at CERN in both VOBoxes
    - Couple of issues with background processes from the alien-installer: not fully debugged
- SAM-NAGIOS
  - Switch in March

# ALICE Impressions

- Happy with CREAM and support
- Happy with site stability and support
- RAW data processing and MC production on track.
  - Big date for ALICE is the QuarkMatter conference in Annecy (23-28 May)
- Heavy user activity on the grid since beginning of 2011
  - From 2K jobs in parallel to 6K up to 15K. This is a great success!!

ALICE is happy!

# Current & Future Plans

- RAW Pass2 reco of the HI period is about to start :  
expected duration 1 month
- Awaiting physics run in 2011, all is ready
- Enhance the usage of GGUS
- Improve availability calculation profile
  - LCG-CE → CREAM-CE
  - Add xrootd tests ?
- gLExec ?
- No changes in operational model foreseen