



2011-03-09

Welcome !


GDB



lrfu
cea
saclay



Staff ~ 80


**Institut National de Physique
Nucléaire et de Physique des
Particules**

Dedicated computing center



CC-IN2P3 centralizes « heavy »
computing means for :

- Nuclear Physics
- Particle Physics
- Astroparticles Physics

~40 experiments or groups
+ the 4 LHC ones

DSM



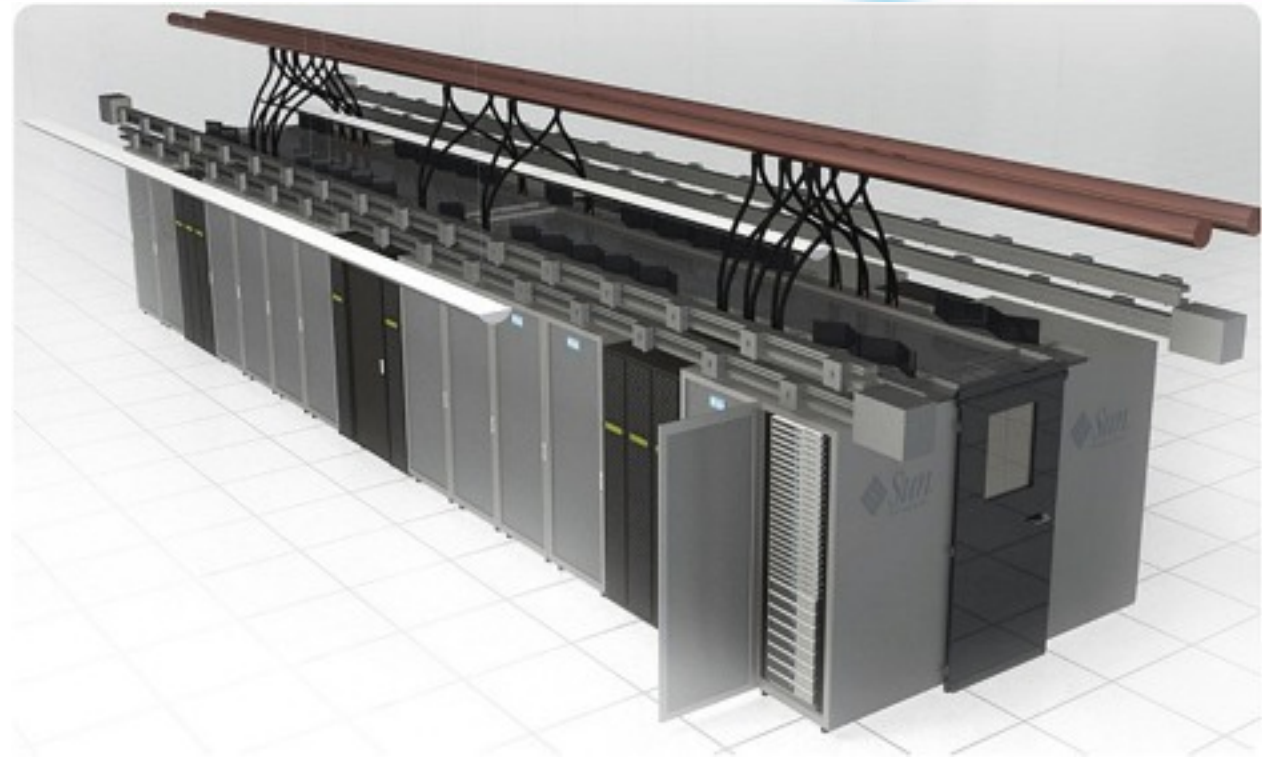
Irfu

Commissariat à
l'Energie
Atomique

The new building



Infrastructure : a new room



■ 3 steps :

- 2011 ~ up to 50 racks and 600 kW
- 2015 ~ up to 125 racks and 1,5 MW
- 2019 ~ up to 216 racks and 3,2 MW

■ Project is on schedule

- started in May 2010
- Available next week !

■ Next steps :

- Racks and network installation
- Move of worker nodes from old room
- Move back of worker nodes located at Montpellier

■ Old room will be dedicated to storage and network