

CERN EAM User Meeting

30 March, 2023

CERN Asset & Maintenance Management Service
EAM.Support@cern.ch

Agenda

- 10:00** → 10:10 **General News**
Speaker: David Widegren (CERN)
- 10:10** → 10:20 **New Service Website**
Speaker: Catharina Hoch (CERN)
- 10:20** → 10:40 **Contract Management Overview**
Speaker: Goran Perinic (CERN)
- 10:40** → 11:00 **Contract Management in EN-CV**
Speaker: Dany Gain (CERN)

EAM News & Updates

Reminder: Infor EAM has become Hexagon EAM

- Whenever possible we just call the product “**EAM**”.



Reminder of new simplified links to our EAM Applications:

- EAM: eam.cern.ch
- EAM Light eamlight.cern.ch
- EAM Store Kiosk: eamkiosk.cern.ch
- EAM Logbook: eamlogbook.cern.ch
- TREC: trec.cern.ch

The old “cmmsx.cern.ch” links are still supported.



EAM News & Updates

EAM running on more robust and stable infrastructure

- Since Dec 2022, EAM is running on CERN's critical infrastructure in 513, distributed over 5 different servers.

Upgrade to EAM version 12.0

- Upgrade planned in production for Friday 28 April.
- Will require several downtime hours during the night between Friday 28 April to Saturday 29 April.
- Reminder emails will be sent out as usual, well before the upgrade.
- Version 12 has been successfully run in our test environment since Nov 2022.
- Its new features will be presented during next user meeting.



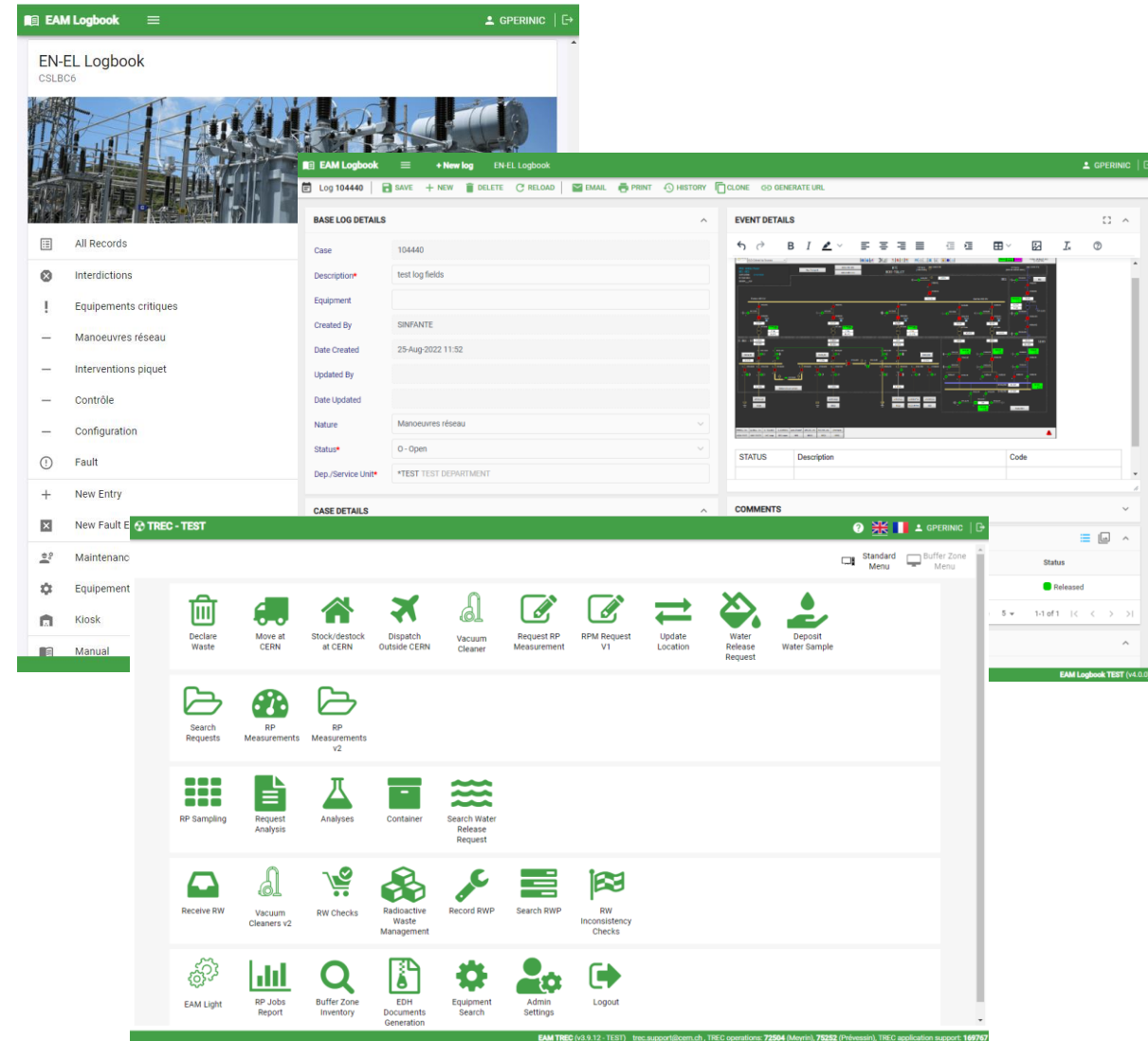
Recent & ongoing developments in the EAM Service

EAM Logbook - New version being tested

- More configurable framework to allow group specific extensions.
- Modernized user interface and improved performance.
- Growing interest from equipment groups in ATS (and beyond).
- Will be presented at a coming user meeting along with user presentations.

TREC – Improvements and additional modules

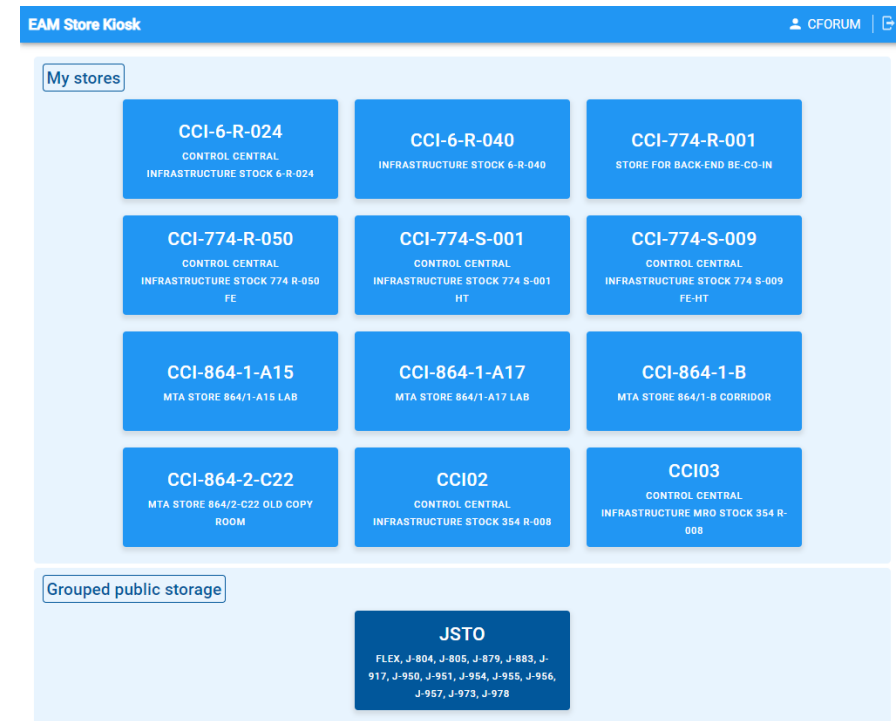
- Improved handling of RP vacuum cleaners: Better knowhow of the EAM equipment rental functionality.
- New modules for Water Releases & RP Waste Elimination.



Recent & ongoing developments in the EAM Service

EAM Store Kiosk - New version deployed

- General overhaul and updates of the applications, including bug fixes.
- Many improvements. Some examples:
 - New Store to Store transfer function.
 - Additional options for transport requests (external shipping, self transport)
 - Search by serial number when issuing
 - Stores shown in separate areas for My stores, Public storage & Grouped public storage
 - Selection of printer in the inbound process is now possible
 - Display of hazards on inbound and outbound grids
 - Possibility to force Kerberos login
- New features & user presentations will be presented at a future user meeting.
- Currently available only via the new short URL (eamkiosk.cern.ch), in the coming days available for all via the "old" link as well.



Recent & ongoing developments in EN-IM

IMPACT

- New version of IMPACT being developed in EN-IM.
- Will be gradually released over the coming 12 months.
- Improved integration with EAM and better sharing of data.

CERN's New PLM (plm.cern.ch)

- Continued roll-out throughout the year of the new PLM that will replace Smarteam and CDD.
- More links and easier navigation between design data and physical assets – a better enforced Digital Thread of engineering data.
- The EAM Equipment Generator functionality will for example also become available inside the PLM.

