

Tier1 Report 05/04/2023

Activity from last week:

- GridPP last week
- Antares is down for scheduled maintenance
- WNs added to LHCONE
 -

Current/Upcoming Activities/Issues from Services:

- Batch
- Disk
- Tape
- Grid Services

Open GGUS tickets <https://tinyurl.com/38u6yms8>

13 of 13 Tickets

Ticket-ID	Type	VO	Site	Priority	Resp. Unit	Status	Last Update	Subject	Scope
160737		ops	RAL-LCG2	less urgent	NGI_UK	on hold	2023-03-08	[Dashboard] Issues detected at RAL-LCG2	EGI
160736		ops	RAL-LCG2	less urgent	NGI_UK	on hold	2023-03-08	[Dashboard] Issues detected at RAL-LCG2	EGI
160398		ops	RAL-LCG2	less urgent	NGI_UK	on hold	2023-03-08	[Dashboard] Issues detected at RAL-LCG2	EGI
159848		ops	RAL-LCG2	less urgent	NGI_UK	on hold	2023-03-08	[Dashboard] Issues detected at RAL-LCG2	EGI
156742		ops	RAL-LCG2	less urgent	NGI_UK	waiting for reply	2023-03-30	NGI_UK - March 2022 - RP/RC OLA ...	EGI
161354		na62.vo.gridpp.ac.uk	RAL-LCG2	urgent	NGI_UK	in progress	2023-04-04	RAL work nodes missing libnuma.so.1	EGI
160671	Team	lhcb	RAL-LCG2	very urgent	NGI_UK	in progress	2023-03-03	Jobs Failed to transfer output to RAL	WLCG
160597	Team	lhcb	RAL-LCG2	less urgent	NGI_UK	on hold	2023-04-05	Secgsi warning because of ...	WLCG
159137	Team	lhcb	RAL-LCG2	very urgent	NGI_UK	on hold	2023-03-22	Slow stat calls at RAL	WLCG
142350	Team	lhcb	RAL-LCG2	top priority	NGI_UK ▶ assigned ▶ involved	in progress	2023-03-26	Problem accessing some LHCb files at RAL	WLCG
158746		dteam	RAL-LCG2	less urgent	NGI_UK ▶ involved	in progress	2023-03-22	perfsnar hosts at RAL	EGI
160682		cms	RAL-LCG2	urgent	NGI_UK	in progress	2023-03-02	SAM tests failing at T1_UK_RAL	WLCG
161400	Team	alice	RAL-LCG2	urgent	NGI_UK	in progress	2023-04-03	8-core jobs for ALICE	WLCG

Closed GGUS tickets:

<https://tinyurl.com/mr2x85w8>

3 of 3 Tickets

Ticket-ID	Type	VO	Site	Priority	Resp. Unit	Status	Last Update	Subject	Scope
160820		dune	RAL-LCG2	urgent	NGI_UK ▶ involved	solved	2023-04-03	Need new Distinguished Names added to ...	EGI
154304	Team	lhcb	RAL-LCG2	very urgent	NGI_UK	verified	2023-04-02	Pilots Failed at RAL-LCG2	WLCG
153532	ALARM	lhcb	RAL-LCG2	top priority	NGI_UK ▶ involved	closed	2023-03-30	Many transfer problems at RAL	WLCG

New Summary Dashboard in progress. Antares plots still needed.

<https://vande.gridpp.rl.ac.uk/next/d/egv8WB4Vz/tier1-vo-service-summary?orgId=1&refresh=1m>

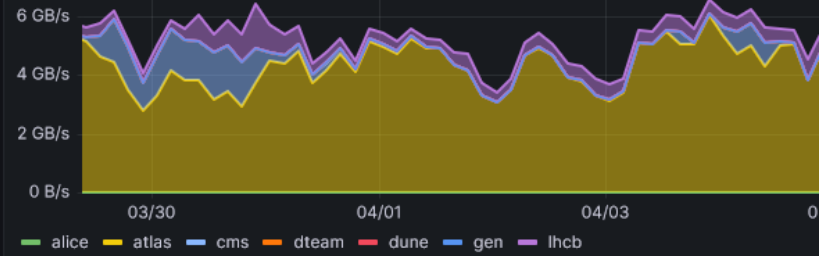
Joint xroot/WebDav Gateway Health

ceph-gw14.gridpp.rl.ac.uk	ok
ceph-gw15.gridpp.rl.ac.uk	ok
ceph-gw16.gridpp.rl.ac.uk	ok
ceph-gw4.gridpp.rl.ac.uk	ok
ceph-gw5.gridpp.rl.ac.uk	ok
ceph-gw6.gridpp.rl.ac.uk	ok
ceph-gw7.gridpp.rl.ac.uk	ok
ceph-svc01.gridpp.rl.ac.uk	ok
ceph-svc02.gridpp.rl.ac.uk	ok
ceph-svc03.gridpp.rl.ac.uk	ok
ceph-svc05.gridpp.rl.ac.uk	ok
ceph-svc97.gridpp.rl.ac.uk	ok
ceph-svc98.gridpp.rl.ac.uk	ok
ceph-svc99.gridpp.rl.ac.uk	ok

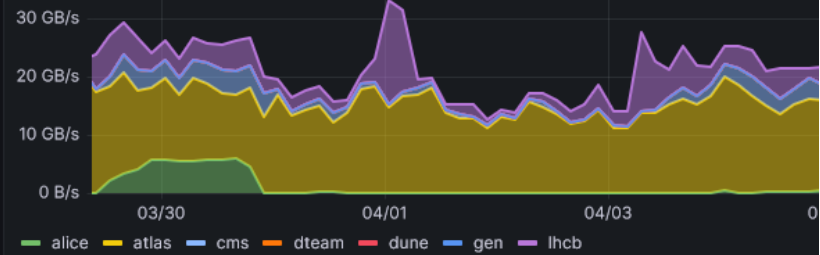
Single serivce XRootD or wewdDav Gateway Health

ceph-gw4.gridpp.rl.ac.uk	ok
ceph-gw5.gridpp.rl.ac.uk	ok

Echo Write by VO



Echo Read by VO



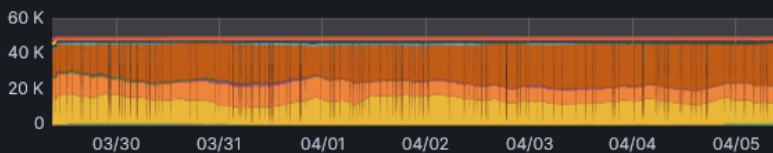
Batch Services

Availab...	A	T	Availab...	Used C...	F	Efficie...
99.2%	99.6%	98.8%	48529	48138	29602	91.2%

Monthly Average Cores in use / allocation

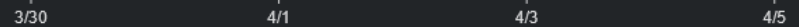
group_ALICE	group_ATLAS	group_CMS	group_LHCB	group_LIGO	group_NONLHC
87%	87%	243%	202%	0%	14%

Cores in use



alice Current: 1.22 K atlas Current: 11.6 K biomed Current: 0
 cms Current: 9.49 K dteam Current: 8 dune Current: 38

Job Time Ratios



CMS: https://cmsst.web.cern.ch/sitereadiness/report.html#T1_UK_RAL

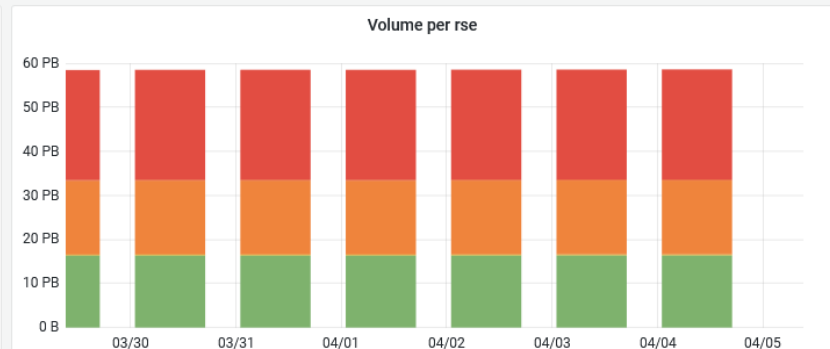
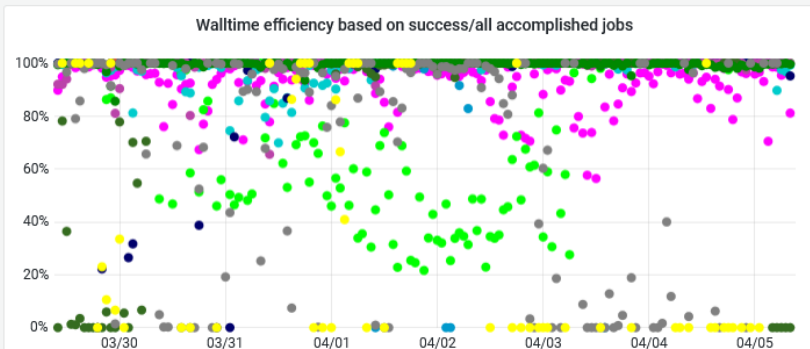
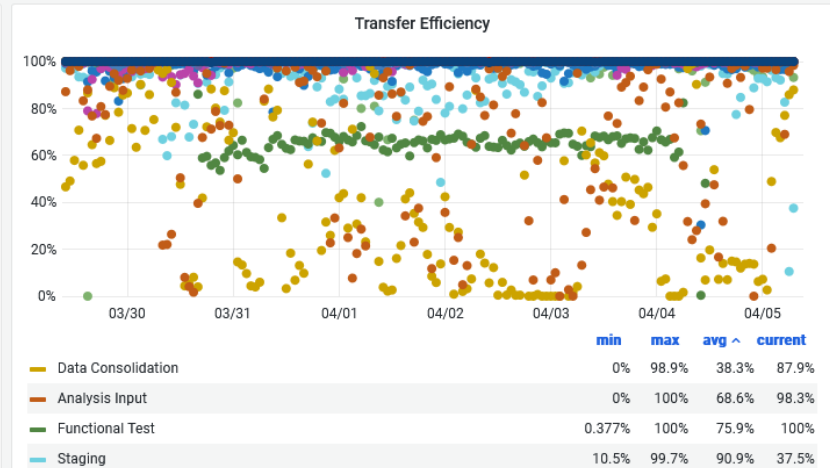
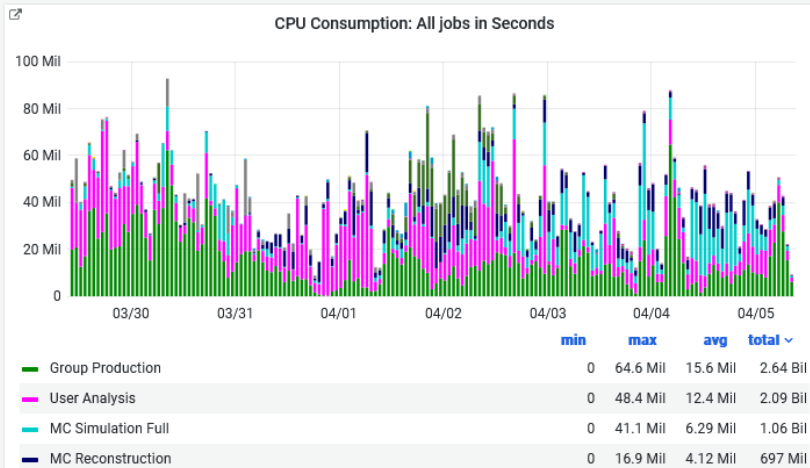
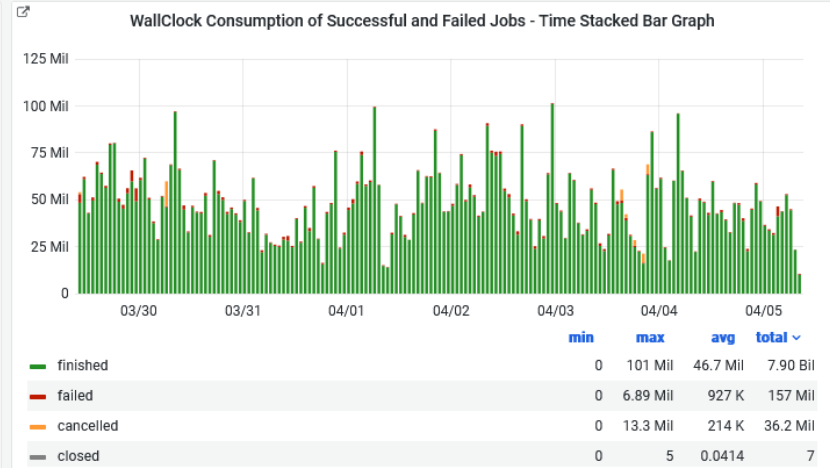
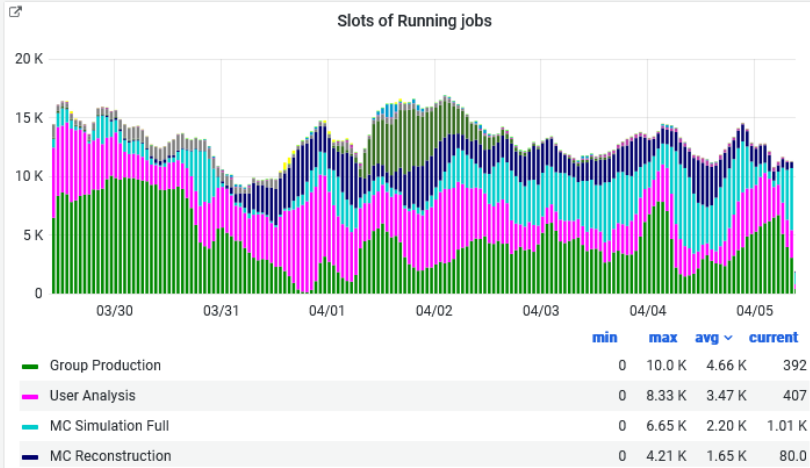
T1_UK_RAL																	
GGUS Tickets:	160682																
Downtimes:																	P
SAM Status:	89%	84%	91%	90%	94%	100%	95%	94%	99%	96%	100%	100%	100%	100%	97%	100%	
Hammer Cloud:	100%	100%	100%	100%	100%	100%	100%	100%	100%	100%	99%	100%	100%	100%	100%	100%	
FTS Status:	0%	0%	0%	0%	0%	0%	0%	0%	0%	0%	0%	0%	0%	0%	0%	0%	
Site Readiness:	88%	77%	87%	78%	89%	76%	81%	80%	97%	87%	93%	93%	95%	99%	86%	92%	
Life Status:																	
Prod Status:																	
CRAB Status:																	
	20	21	22	23	24	25	26	27	28	29	30	31	1	2	3	4	5
	Mar											Apr					

https://cmsst.web.cern.ch/siteStatus/detail.html?site=T1_UK_RAL

Metric	Prev. Month	Previous Week	Yesterday	UTC Today	Following Week
Downtime(s)					
SAM (1day)					
HC (1day)					
FTS (1day)					
SiteReadiness (1day)					
Life Status					
Life Override					
Prod Status					
Prod Override					
Crab Status					
Crab Override					
GGUS tickets:	[160682]				
SAM Status					
Hammer Cloud					
FTS Status					
Site Readiness					
Summary					

ATLAS: <http://hammercloud.cern.ch/hc/app/atlas/siteoverview/?site=RAL-LCG2&startTime=2022-02-16&endTime=2022-02-23&templateType=isGolden>

Site Dashboard: https://monit-grafana.cern.ch/d/D26vElGGz/site-oriented-dashboard?orgId=17&var-bin=1h&var-groupby_jobs=adactivity&var-groupby_ddm=activity&var-cloud=All&var-country=All&var-federation=All&var-site=RAL-LCG2&var-computingsite=All&var-jobtype=All&var-es_division_factor=1&var-measurement=ddm_transfer_1h

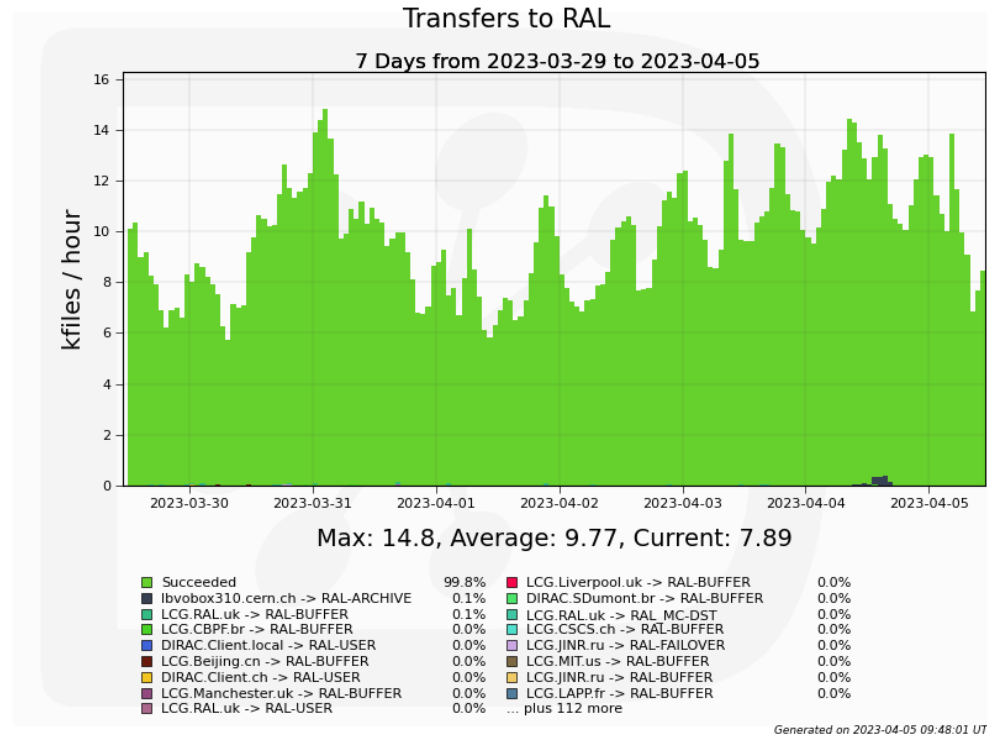


LHCB: https://monit-grafana.cern.ch/d/000000619/wlwg-sitemon-historical-profiles?orgId=20&from=now-30d&to=now&var-vo=lhcb&var-profile=LHCB_CRITICAL&var-dst_tier=1&var-dst_country=UK&var-dst_federation=All&var-dst_experiment_site=LCG.RAL.uk&var-service_flavour=ARC-CE&var-dst_hostname=All&var-recomputation=status

Endpoint Status

[LCG.RAL.uk] [ARC-CE] [arc-ce-test02.gridpp.rl.ac.uk] lhcb:	OK
[LCG.RAL.uk] [ARC-CE] [arc-ce01.gridpp.rl.ac.uk] lhcb:	
[LCG.RAL.uk] [ARC-CE] [arc-ce02.gridpp.rl.ac.uk] lhcb:	
[LCG.RAL.uk] [ARC-CE] [arc-ce03.gridpp.rl.ac.uk] lhcb:	
[LCG.RAL.uk] [ARC-CE] [arc-ce04.gridpp.rl.ac.uk] lhcb:	OK
[LCG.RAL.uk] [ARC-CE] [arc-ce05.gridpp.rl.ac.uk] lhcb:	OK

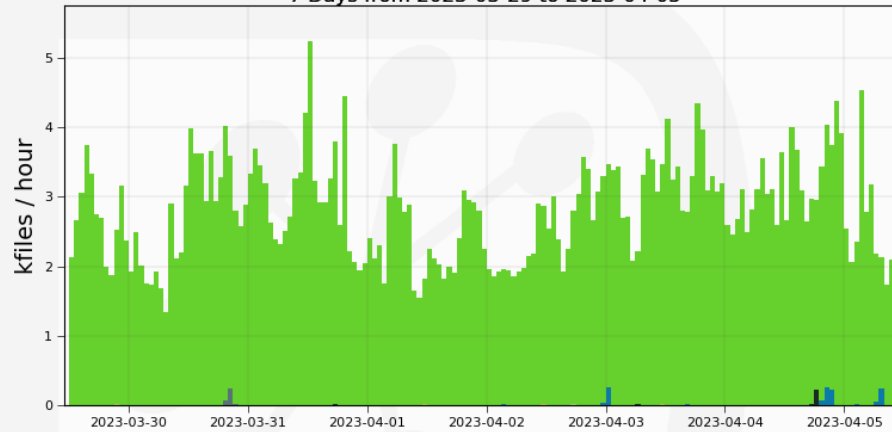
Transfers to RAL:



Transfers from RAL:

Transfers from RAL

7 Days from 2023-03-29 to 2023-04-05

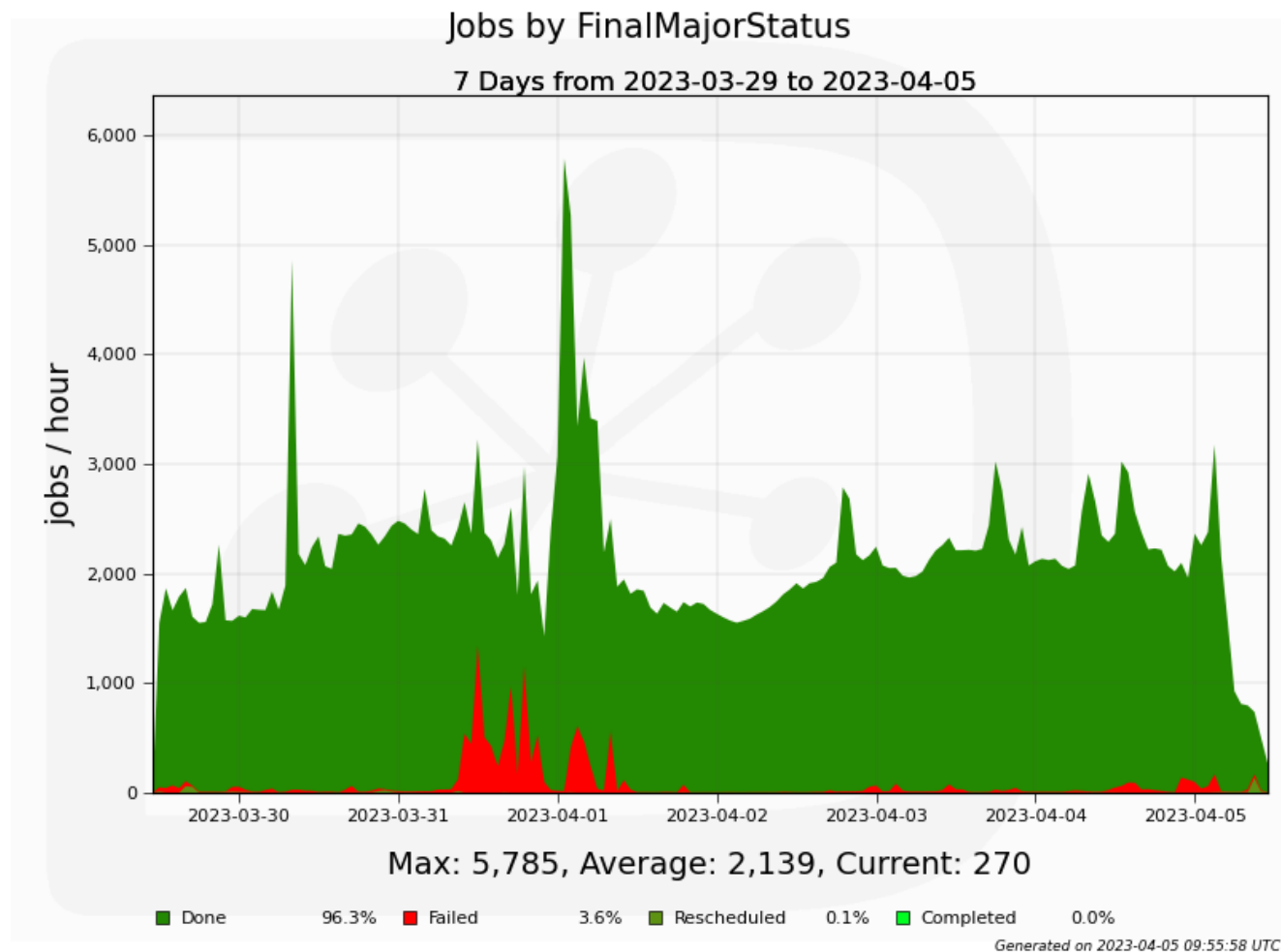


Max: 5.23, Average: 2.80, Current: 2.79

Succeeded	99.6%	RAL-USER -> LCG.CSCS.ch	0.0%
RAL-USER -> DIRAC.Client.ch	0.2%	RAL-USER -> LCG.CERN.cern	0.0%
RAL_MC-DST -> SARA_MC-DST	0.1%	RAL-USER -> LCG.CPPM.fr	0.0%
RAL-USER -> DIRAC.Client.cn	0.1%	RAL_MC-DST -> CSCS_MC-DST	0.0%
RAL-BUFFER -> LCG.RAL.uk	0.0%	RAL-USER -> LCG.USC.es	0.0%
RAL-USER -> LCG.RAL.uk	0.0%	RAL-BUFFER -> LCG.GRIDKA.de	0.0%
RAL-ARCHIVE -> DIRAC.Client.ch	0.0%	RAL-USER -> LCG.IN2P3.fr	0.0%
RAL_MC-DST -> DIRAC.Client.ch	0.0%	RAL_MC-DST -> RAL-ARCHIVE	0.0%
RAL-USER -> LCG.CNAF.it	0.0%	... plus 74 more	

Generated on 2023-04-05 09:55:09 UTC

Jobs:



ALICE

http://alimonitor.cern.ch/stats?page=SE%2Ftable&filter_0=&filter_0_0=RAL%3A%3ACEPH&filter_0_1=&filter_0_2=&filter_0_3=&filter_0_4=&filter_0_5=&filter_0_6=&filter_0_7=&filter_0_8=&filter_0_9=&filter_0_10=&filter_0_11=&filter_0_12=&filter_0_13=&filter_0_14=&filter_0_15=&

filter 0 16=&filter 0 17=&filter 0 18=&filter 0 19=&filter 0 20=&filter 0 21=&filter 0 22=&filter 1=&filter 1 0=%21&filter 1 1=&filter 1 2=&filter 1 3=&filter 1 4=&filter 1 5=&filter 1 6=&filter 1 7=&filter 1 8=&filter 1 9=&filter 1 10=&filter 1 11=&filter 1 12=&filter 1 13=&filter 1 14=&filter 1 15=&filter 1 16=&filter 1 17=&filter 1 18=&filter 1 19=&filter 1 20=&filter 1 21=&filter 1 22=

Total: 236 Elements

Disk storage elements																							
RAL::CEPH																							
AliEn SE		Catalogue statistics							Storage-provided information					Functional tests				Last day add tests		Demotion	IPv6		
SE Name	AliEn name	Tier	Size	Used	Free	Usage	No. of files	Type	Size	Used	Free	Usage	Version	EOS Version	add	get	rm	3rd	Last OK add	Successful	Failed	factor	add
1. RAL - CEPH	ALICE::RAL::CEPH	1	1.496 PB	884 TB	648.4 TB	57.69%	10,379,219	CEPH	1.462 PB	910.5 TB	586.5 TB	60.82%	Xrootd v5.5.0						05.04.2023 09:32	24	0	0	
2. RAL - CEPH_Test	ALICE::RAL::CEPH_Test	1	36.38 TB	0	36.38 TB	-	0	CEPH	36.38 TB	38.04 GB	36.34 TB	0.102%	Xrootd v5.5.0						05.04.2023 10:02	24	0	0	Test...
Total			1.532 PB	884 TB	684.8 TB		10,379,219		1.497 PB	910.5 TB	622.9 TB				2	2	2	2					1