



EMI QA Policies

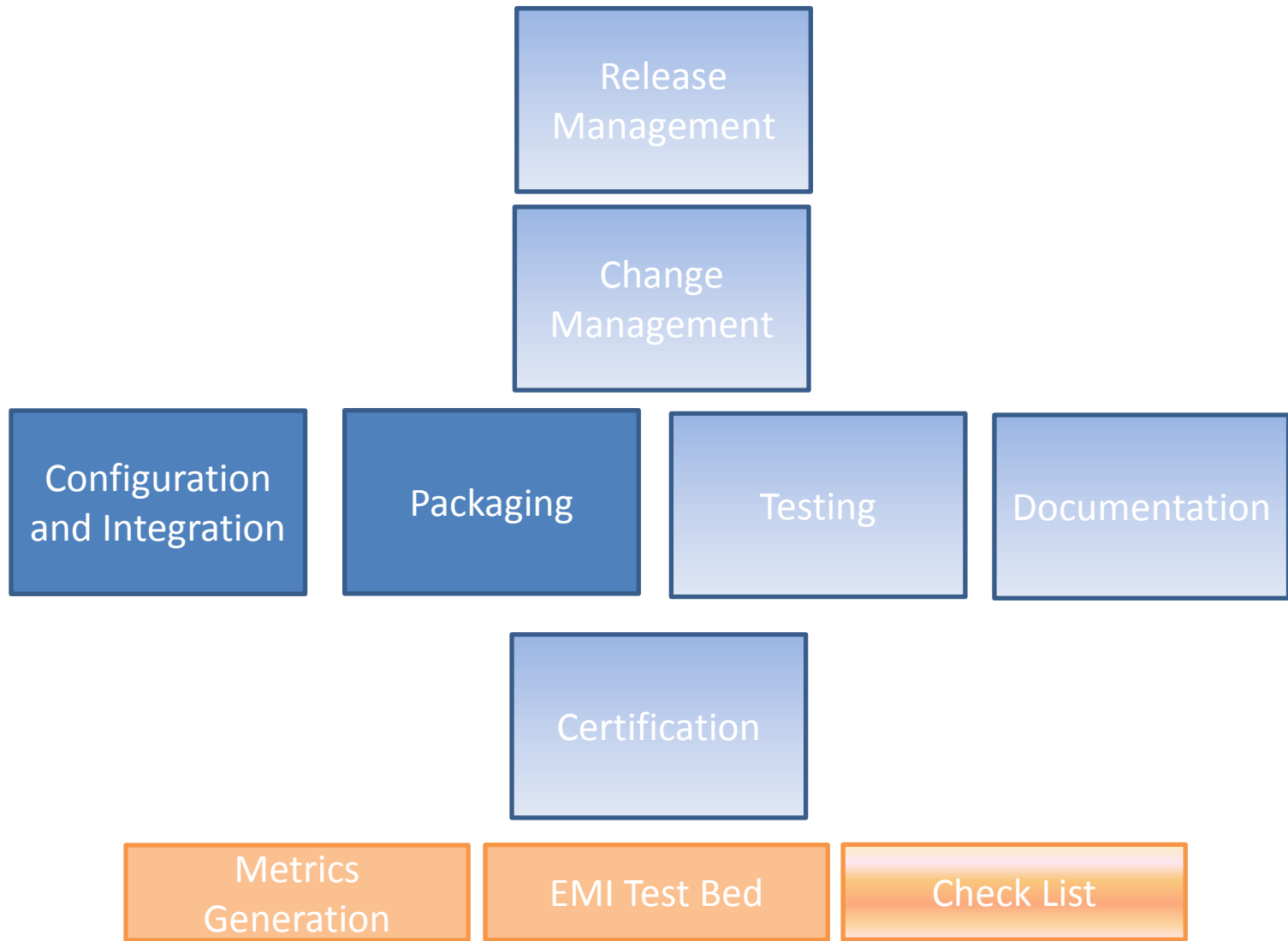
Maria Alandes (CERN)

SA2.2 Task Leader

Outline

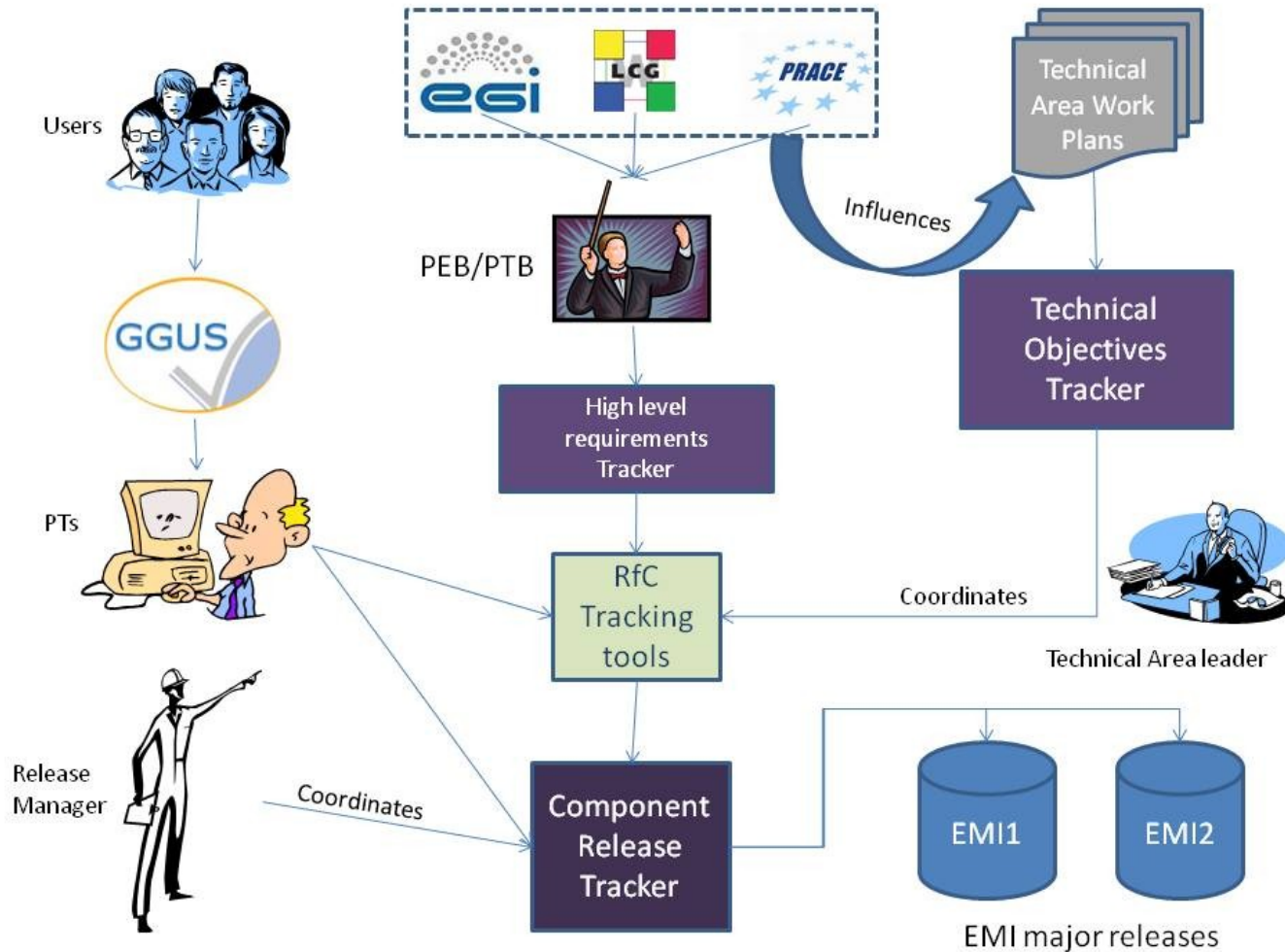
- EMI QA policies overview
- Release Management
- Check list for PTs in detail
 - Implementation
 - Building and Packaging
 - Testing
 - Documentation
 - Certification
- Overview of the rest of the release process
 - QC verification
 - Integration tests
 - Release to Production

EMI QA policies overview



Release Management

<https://twiki.cern.ch/twiki/bin/view/EMI/EmiSa2ReleaseManagementPolicy>



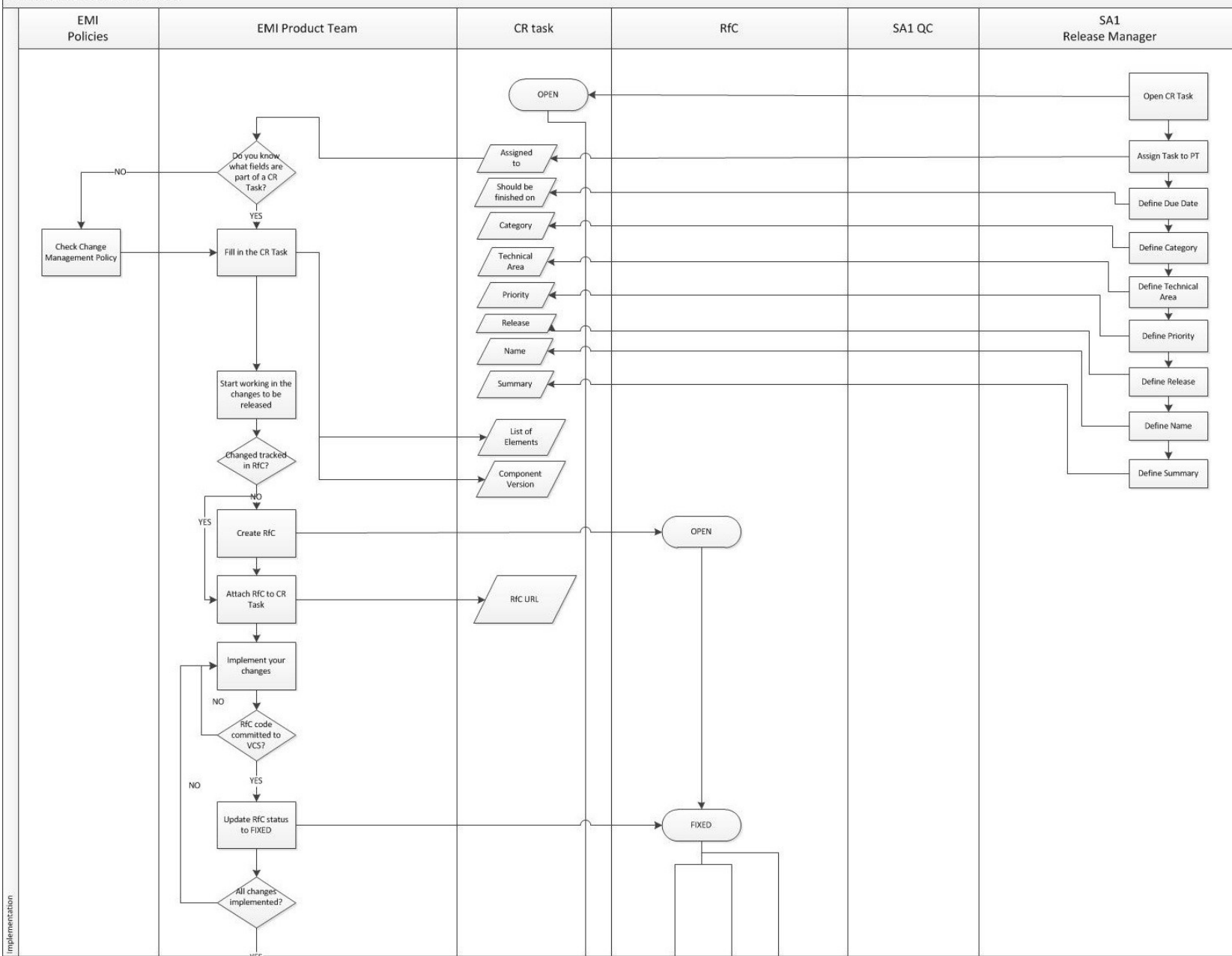
Check List

<https://twiki.cern.ch/twiki/bin/view/EMI/EMIReleaseChecklist>

- Use the check list to prepare the release
- A suggestion to prepare your component release:
 - Print the Certification Report template
 - https://twiki.cern.ch/twiki/pub/EMI/EmiSa2CertPolicy/EMI_Certification_Report_template.txt
 - Print the Test Report template
 - https://twiki.cern.ch/twiki/pub/EMI/EMITestReport/EMI_Test_Report_template.txt
- Follow the steps in the check list or follow the workflow:
 - https://twiki.cern.ch/twiki/pub/EMI/EMIReleaseChecklist/checklist_diagram_v2.jpg

Implementation

EMI Release Check list workflow



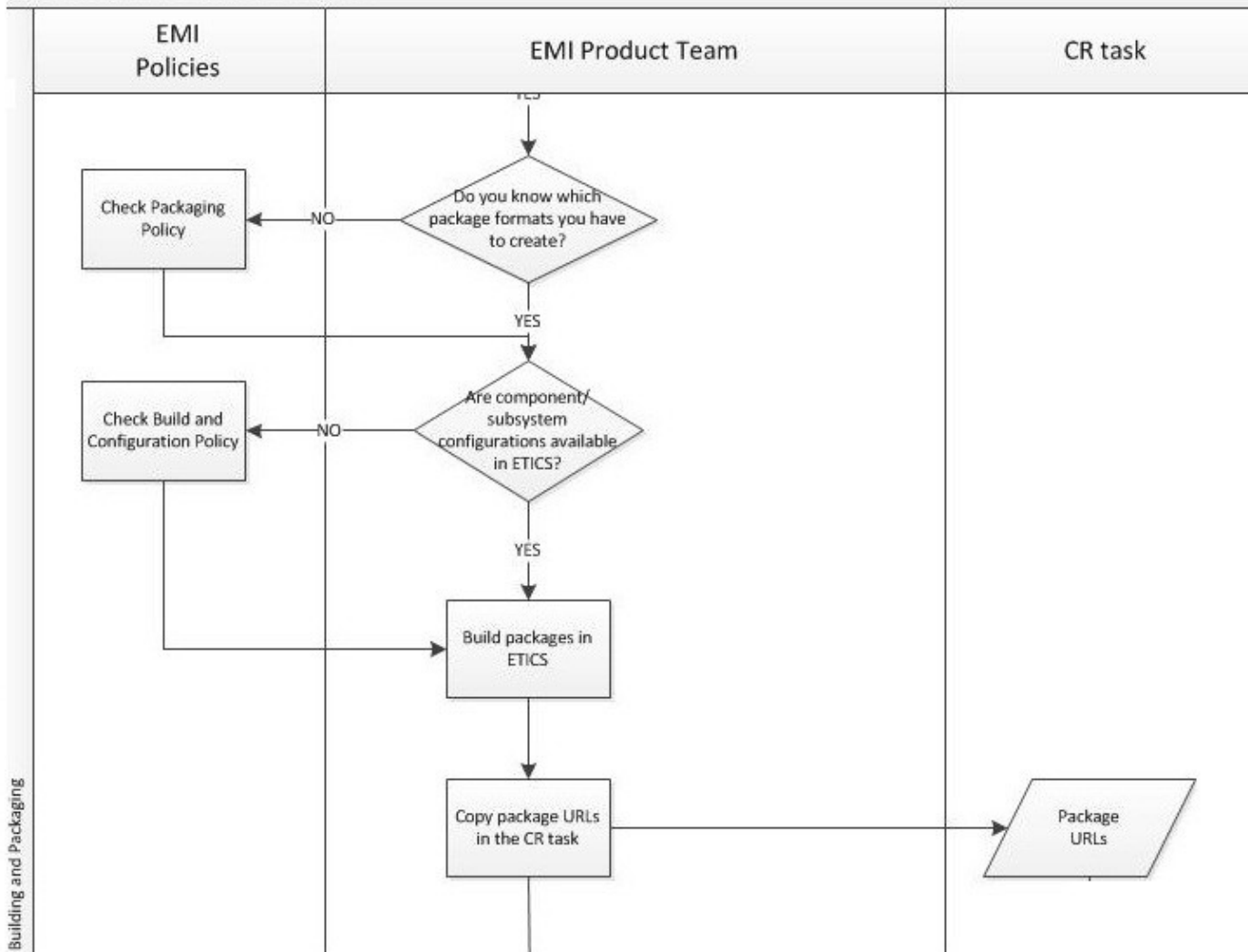
Implementation

Implementation

- Check the Change Management Policy
- <https://twiki.cern.ch/twiki/bin/view/EMI/EmiSa2ChangePolicy>
 - To know how to fill in the CR task
 - To know how to fill in your RfCs
- Work on your changes and make sure they are tracked in RfCs and in the CR task (points 1 to 4 in the check list).
- See CR example task in:
 - <https://savannah.cern.ch/task/index.php?19271>

Build and Packaging

EMI Release Check list workflow



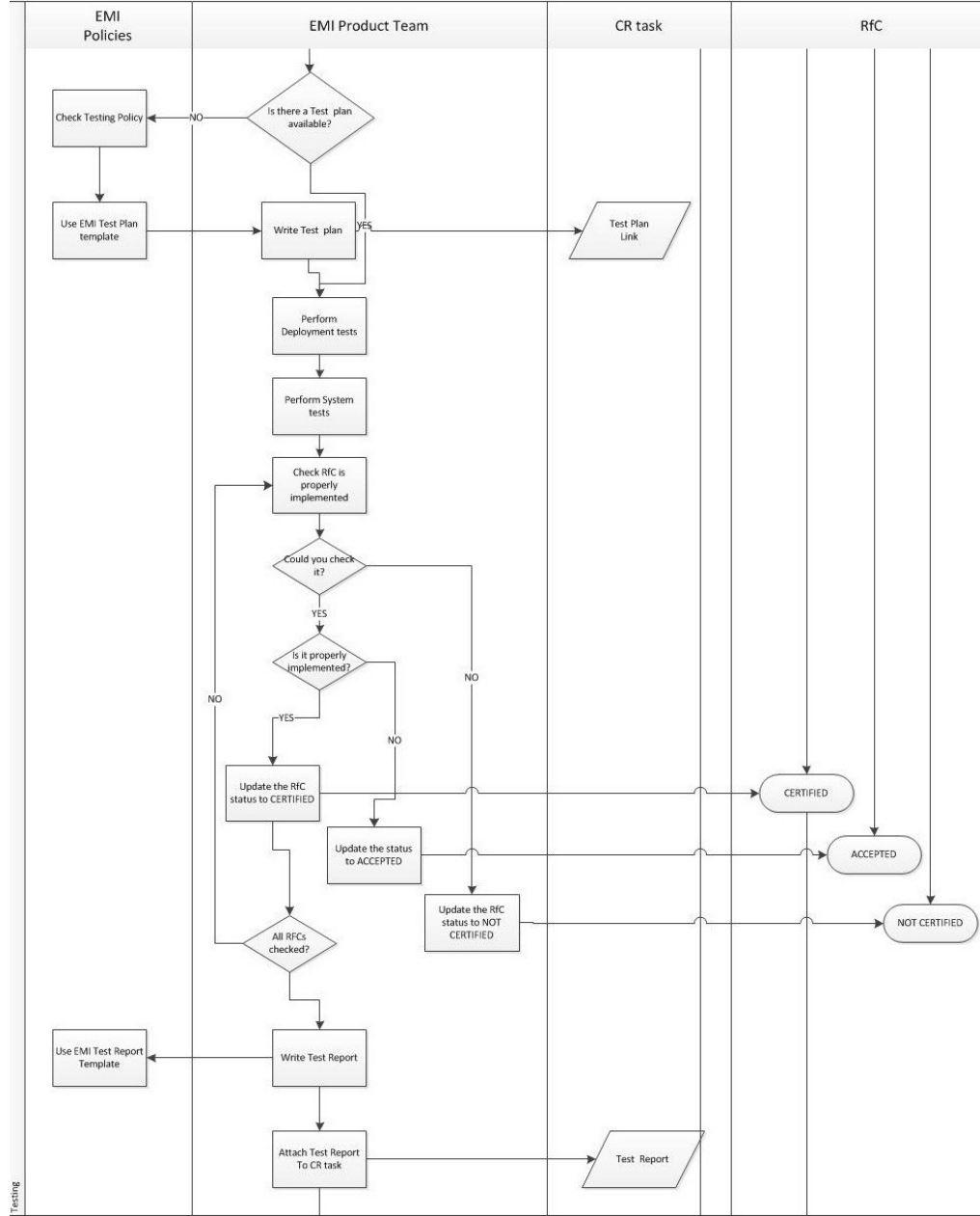
Building and Packaging

Build and Packaging

- Check the Configuration and Integration policy
 - <https://twiki.cern.ch/twiki/bin/view/EMI/EmiSa2ConfigurationIntegrationPolicy>
- Check the Packaging policy
 - <https://twiki.cern.ch/twiki/bin/view/EMI/EmiSa2PackagingPolicy>
- Build your packages (points 5 to 10 in the check list).
- Training on these policies was given last week:
 - <http://indico.cern.ch/getFile.py/access?contribId=1&resId=1&materialId=slides&confId=127278>

Testing

EMI Release Check list workflow



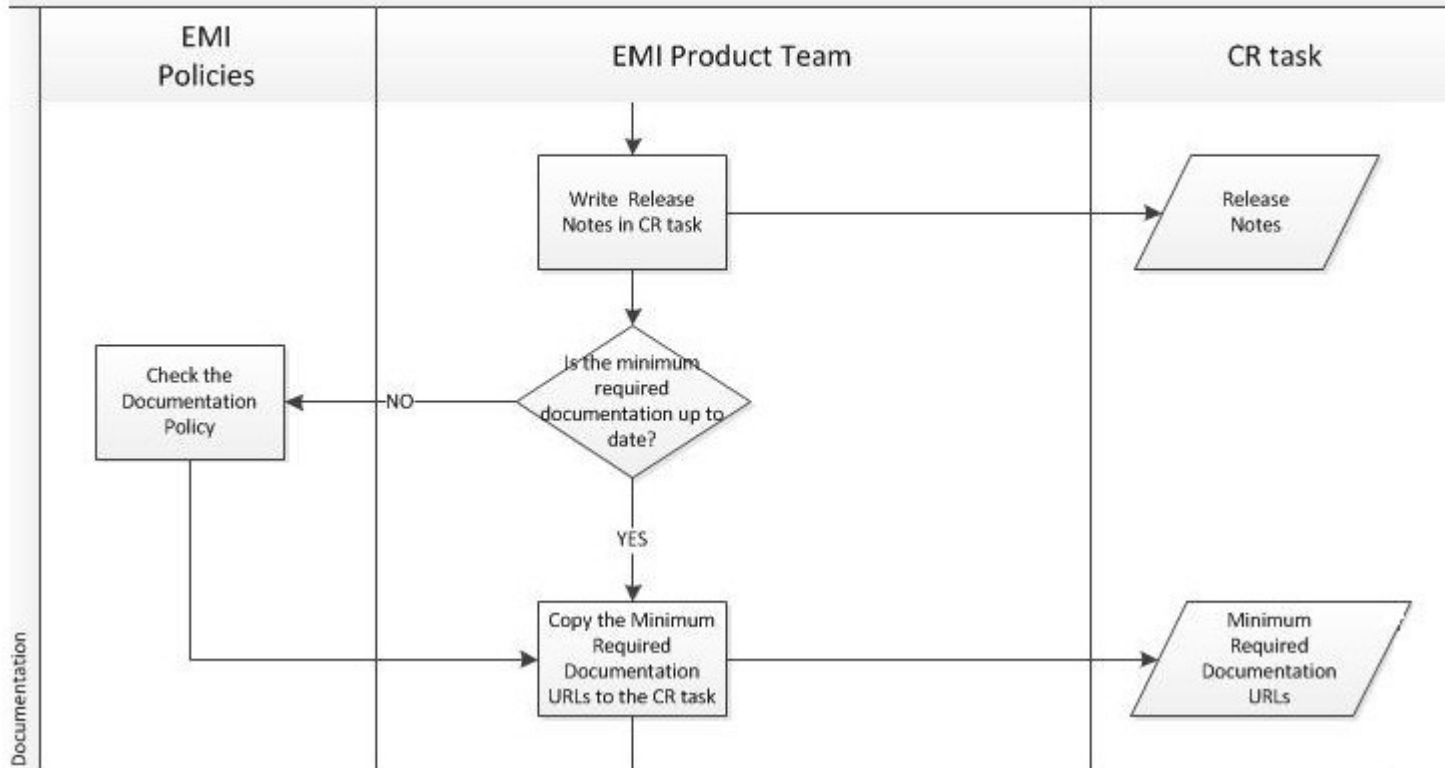
03/03/2011

Testing

- Check the Testing policy
- <https://twiki.cern.ch/twiki/bin/view/EMI/EmiSa2TestPolicy>
 - To know how to write a test plan.
 - To know how to write a test report.
- Test your component release (points 11 to 16 in the check list).
- Test plan template: <https://twiki.cern.ch/twiki/bin/view/EMI/EMITestPlan>
- Test report template: <https://twiki.cern.ch/twiki/bin/view/EMI/EMITestReport>

Documentation

EMI Release Check list workflow

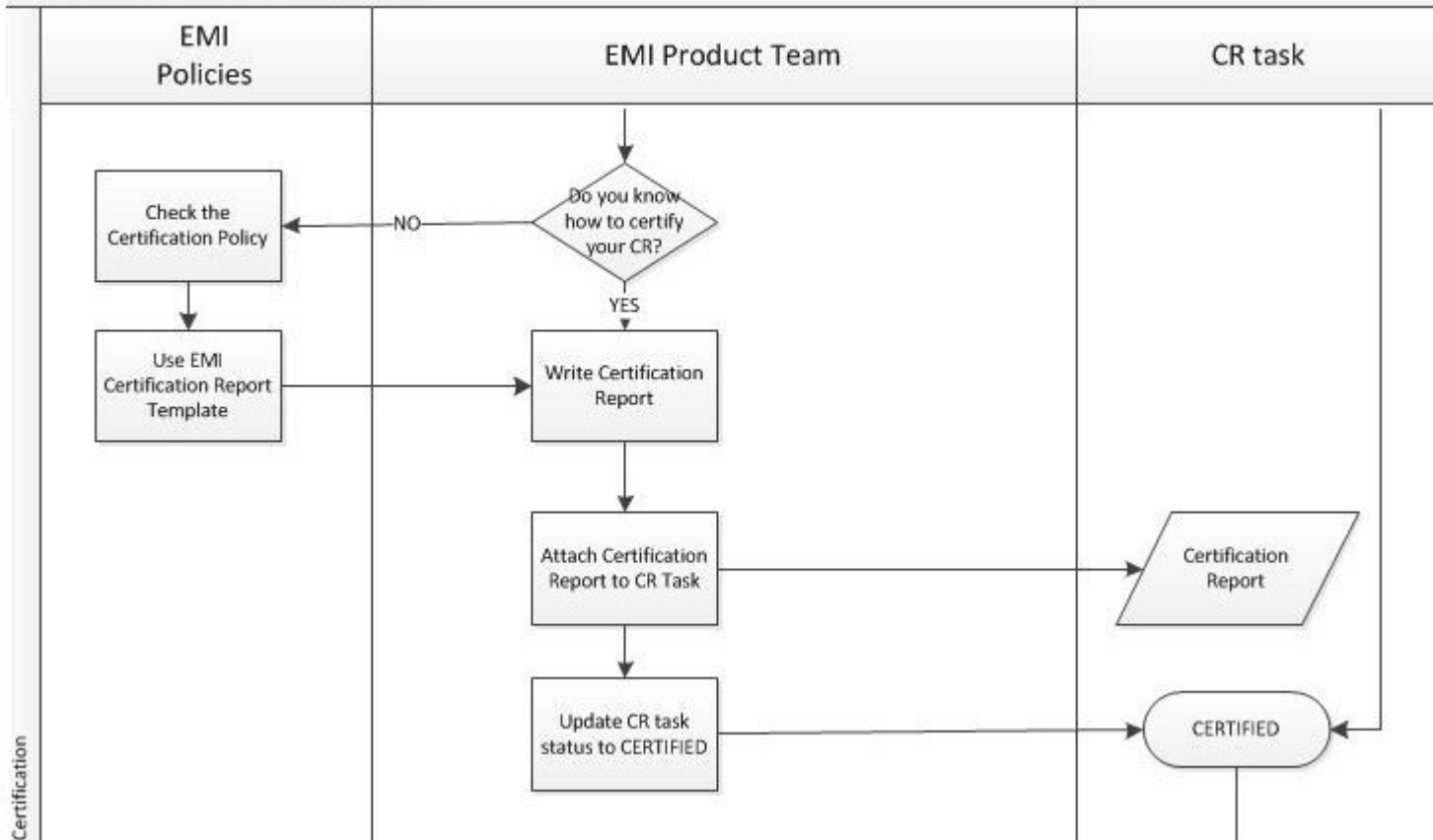


Documentation

- Check the Documentation policy
 - <https://twiki.cern.ch/twiki/bin/view/EMI/EMISa2DocumentationPolicy>
 - To use templates for Minimum Required Documentation.
- Check Change Management Guidelines
 - https://twiki.cern.ch/twiki/bin/view/EMI/EmiSa2ChangePolicy#CR_Tracking
 - To know how to write Release Notes
- Document your component release (points 17 to 18 in the check list).

Certification

EMI Release Check list workflow

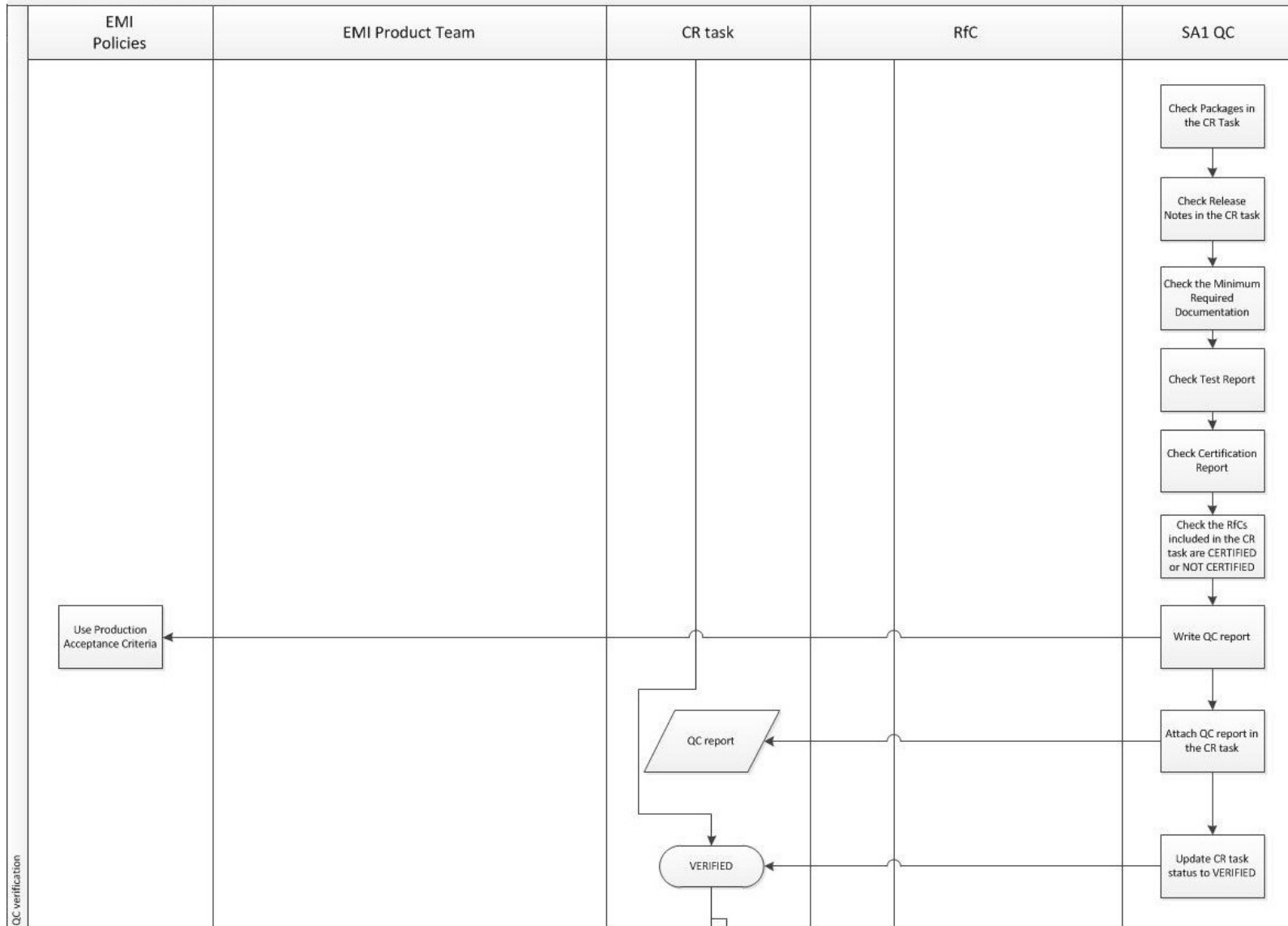


Certification

- Check the Certification policy
- <https://twiki.cern.ch/twiki/bin/view/EMI/EmiSa2CertPolicy>
 - To know how to certify your component release.
- Certify your component release (points 19 to 21 in the check list).
- Certification Report Template:
https://twiki.cern.ch/twiki/pub/EMI/EmiSa2CertPolicy/EMI_Certification_Report_template.txt

QC verification (steps 22 to 24)

EMI Release Check list workflow

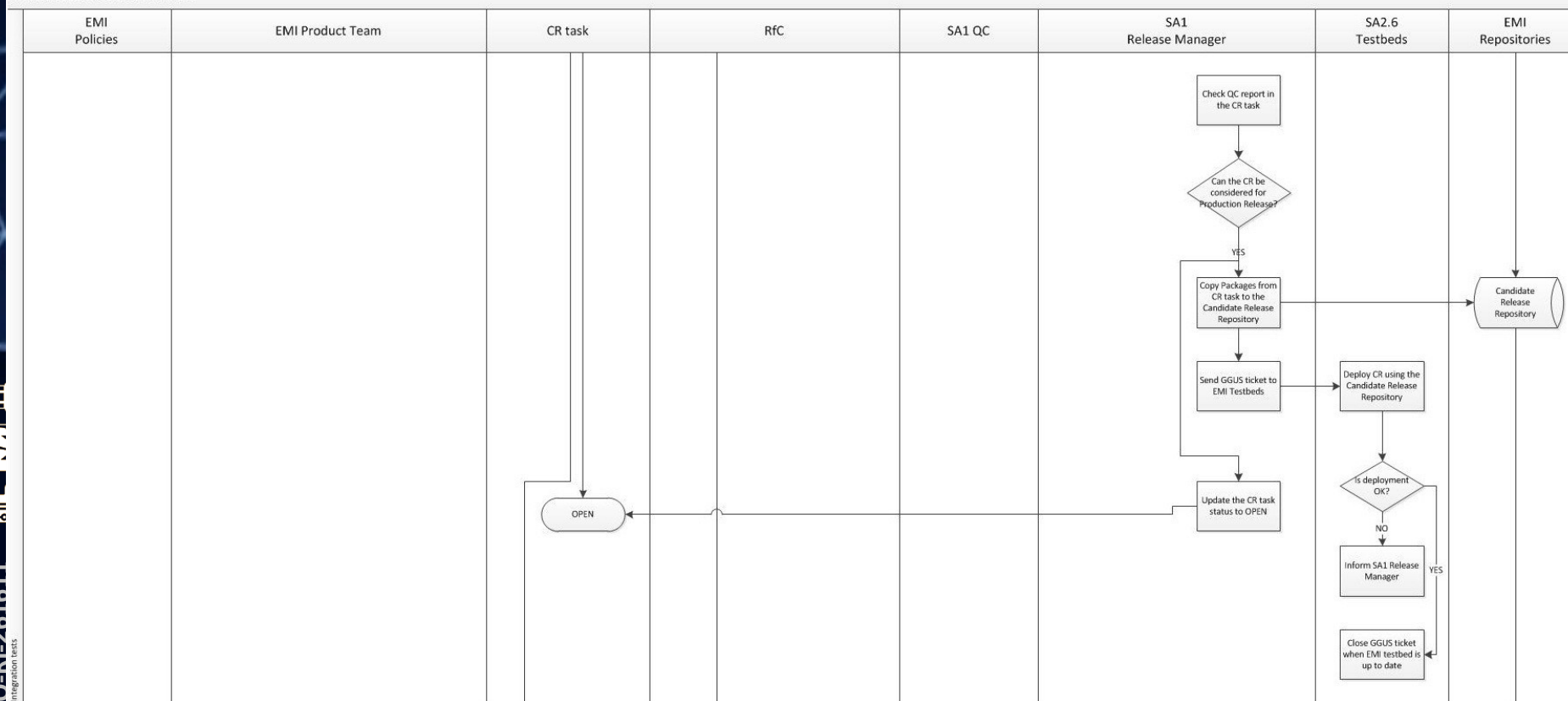


QC verification

Inter-component tests (steps 25 to 28)

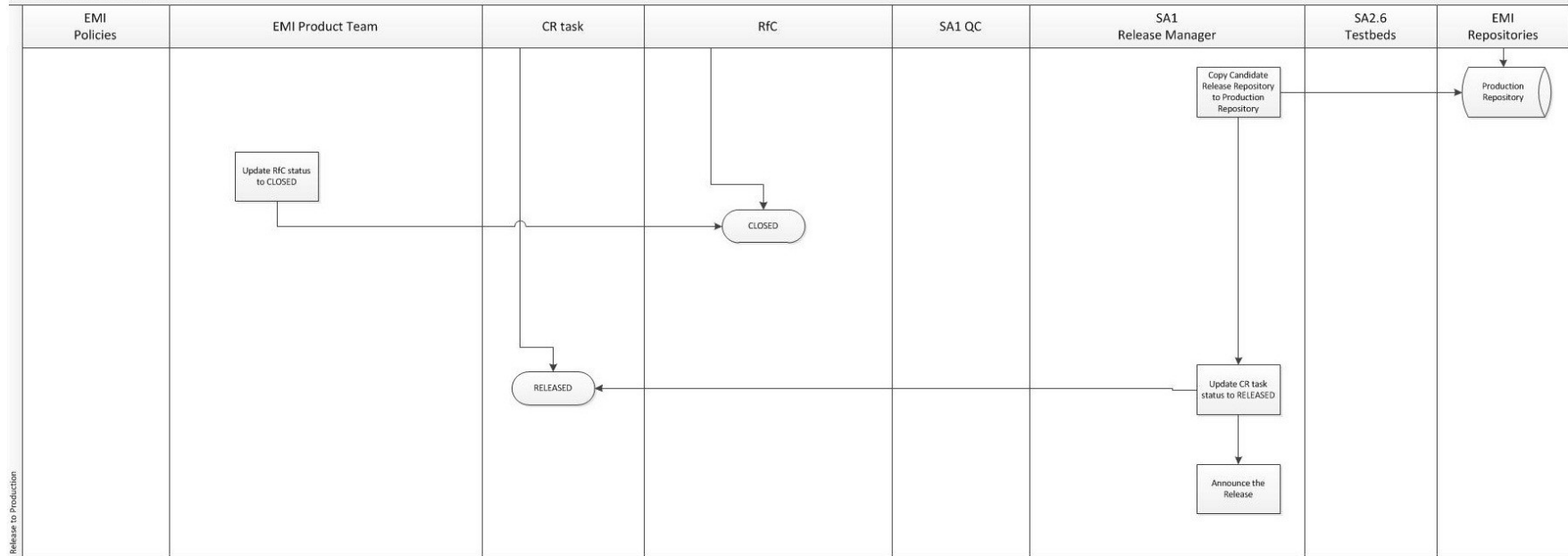
Inter-component testing still needs to be understood...

EMI Release Check list workflow



Release to production (steps 29 to 30)

EMI Release Check list workflow



Release to Production



Thank you

EMI is partially funded by the European Commission under Grant Agreement INFSO-RI-261611