

HOW TO CHOOSE YOUR MECH KEYBOARD

By:

Javier Ferrer - IT-SD-GSS



PART II: HOW TO BUILD YOUR MECH KEYBOARD

By:

Javier Ferrer - IT-SD-GSS



1. TOOLS

SOLDERING IRON



TS80

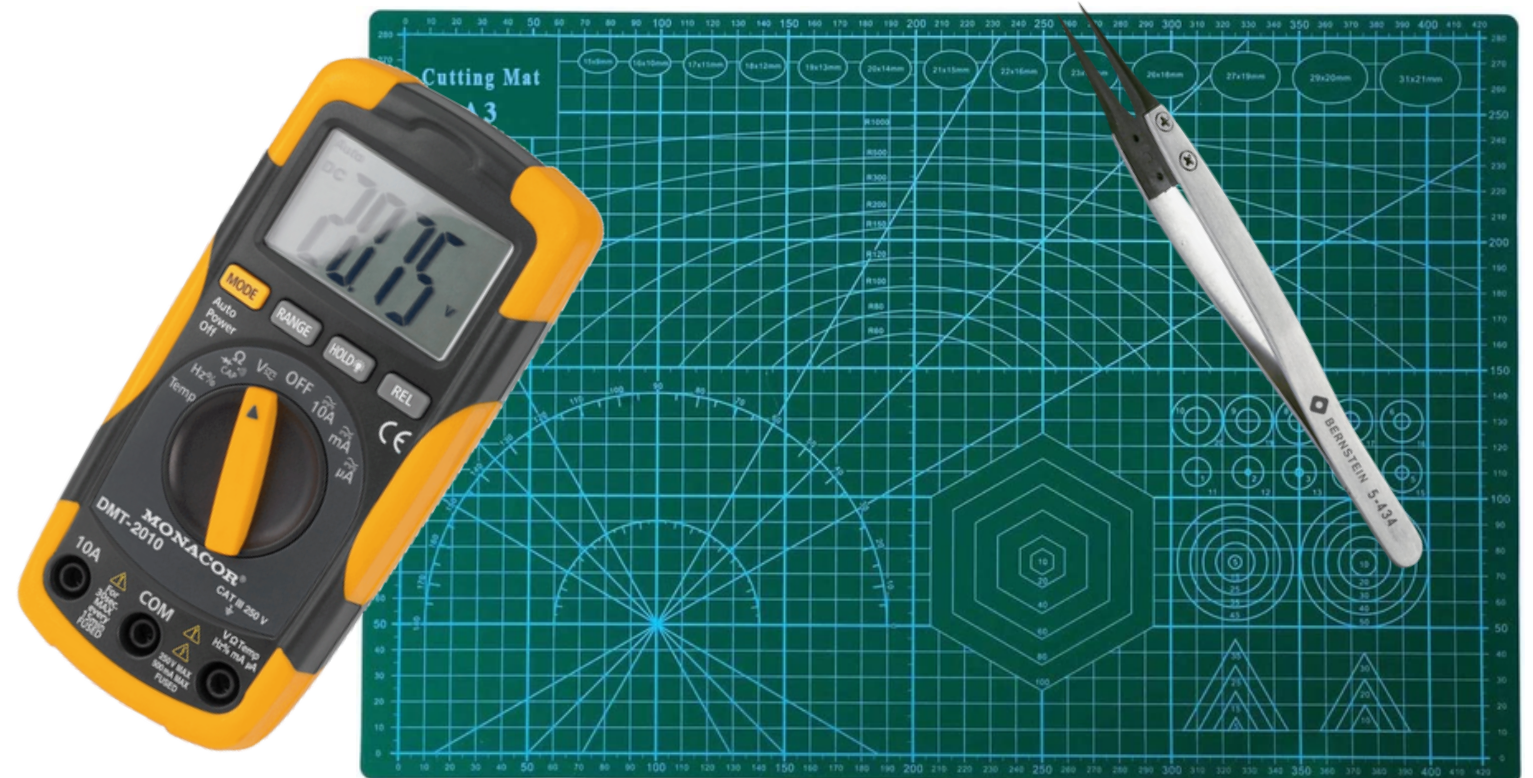
PINECIL v2

TS101

TIN/WICK/FLUX



OTHER STUFF



1. TOOLS

SOLDERING STAND



1. TOOLS

SOLDERING STAND



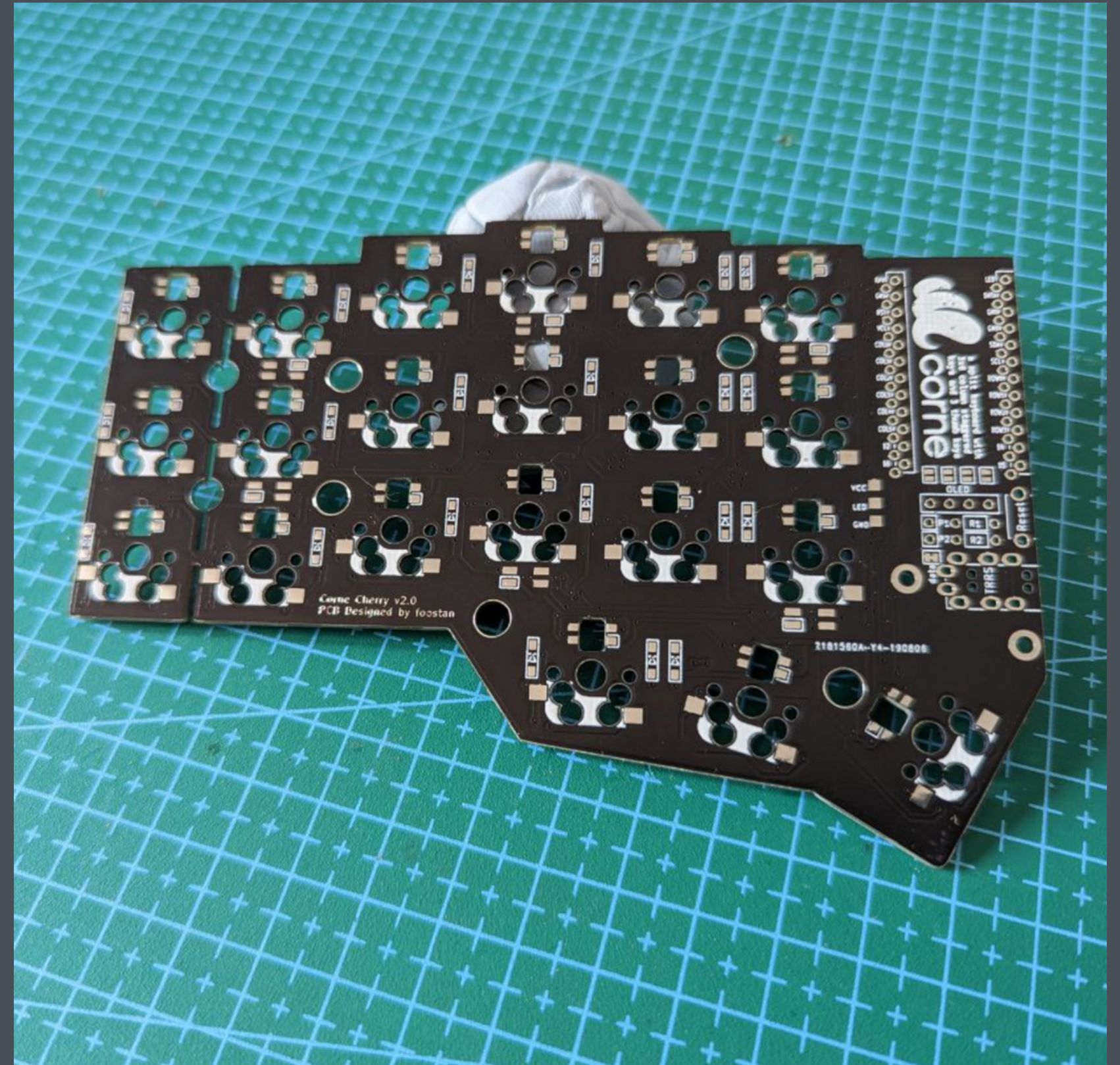
1. TOOLS

SOLDERING STAND



1. TOOLS

SOLDERING STAND



1. TOOLS

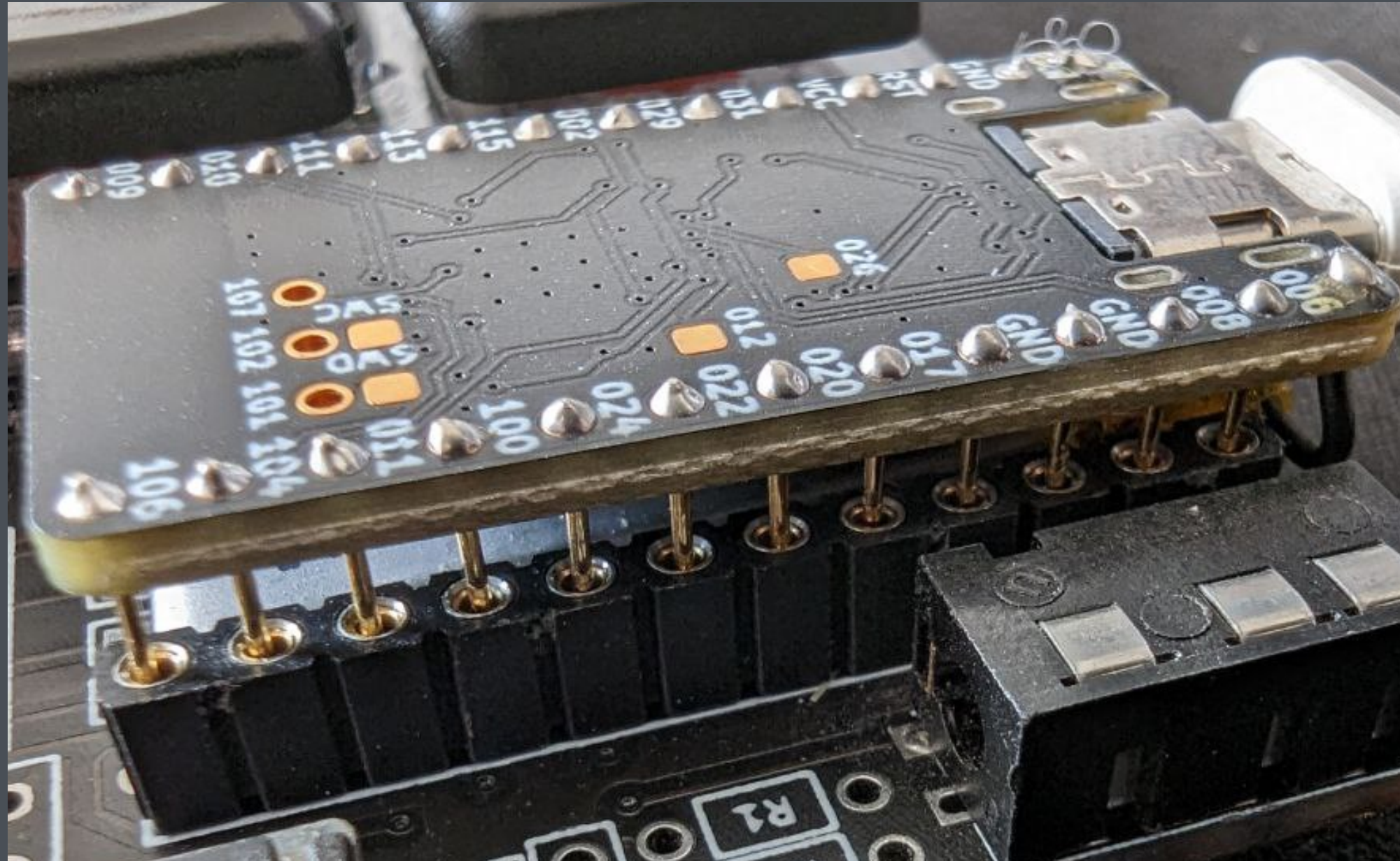
DESOLDERING PUMP

You don't ever want to use it, but it will save your life someday.



2. PARTS

MILL-MAX SOCKETS



Enables you to pull out the controller whenever needed and resocket, useful to play around or try different controllers.



XXXXX

2. PARTS

MAGNETIC USE

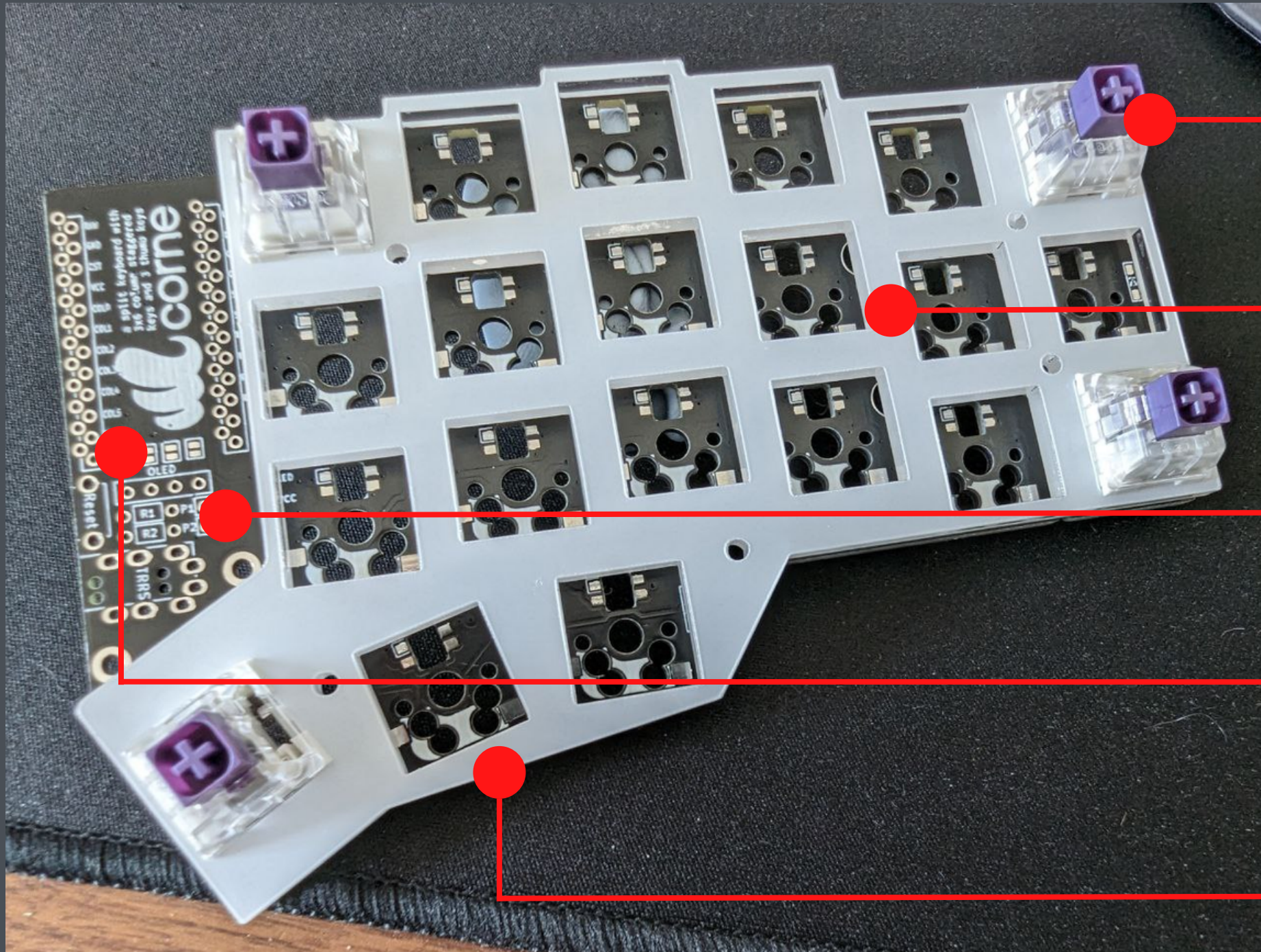


Easy detach

XXXXX

3. TIPS

Think twice, solder once!



Place corner switchers first, to align things up

If you have a plate, it goes BELOW the switches!

Be mindful of the PCB sides

Remember to short pods if needed

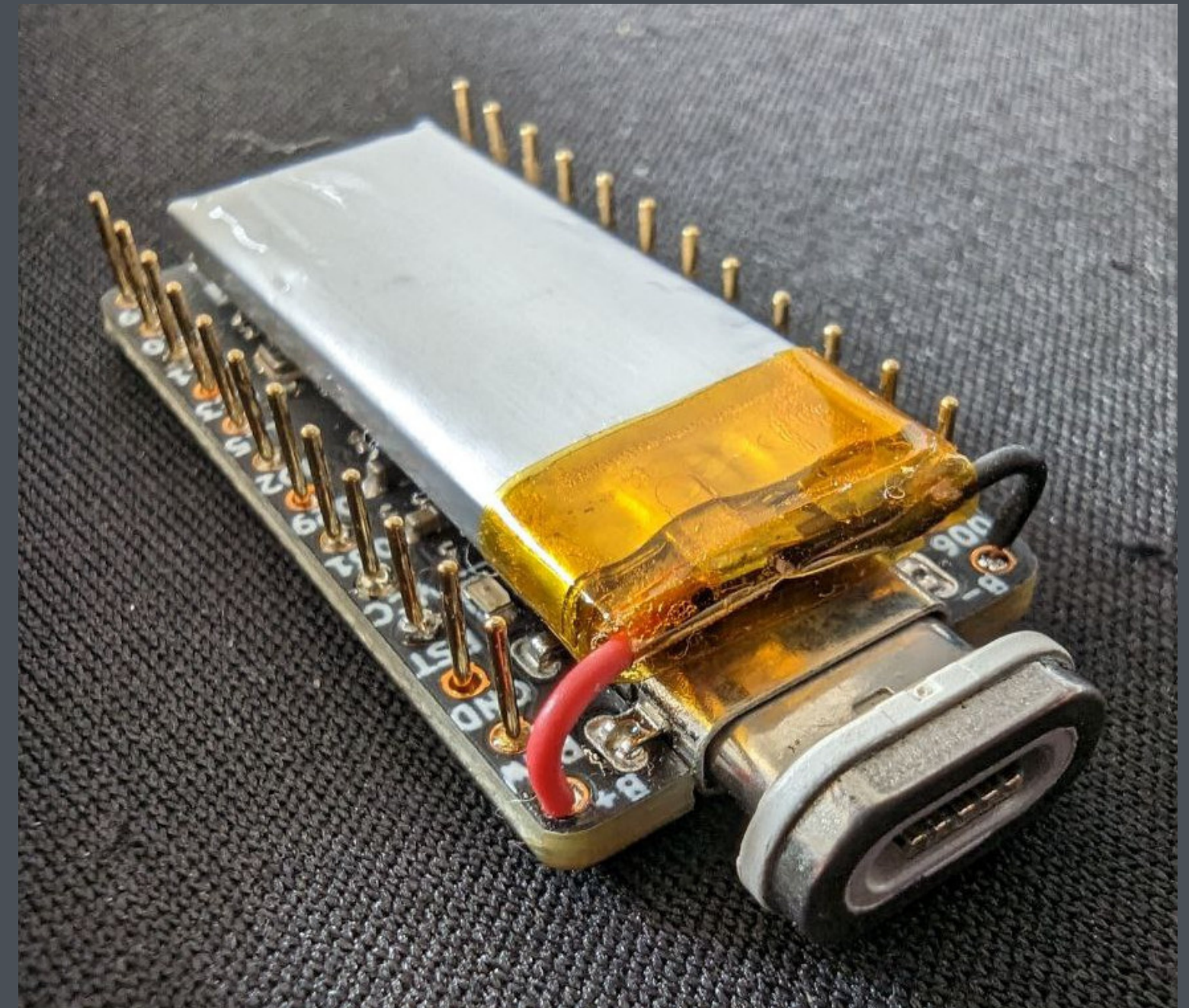
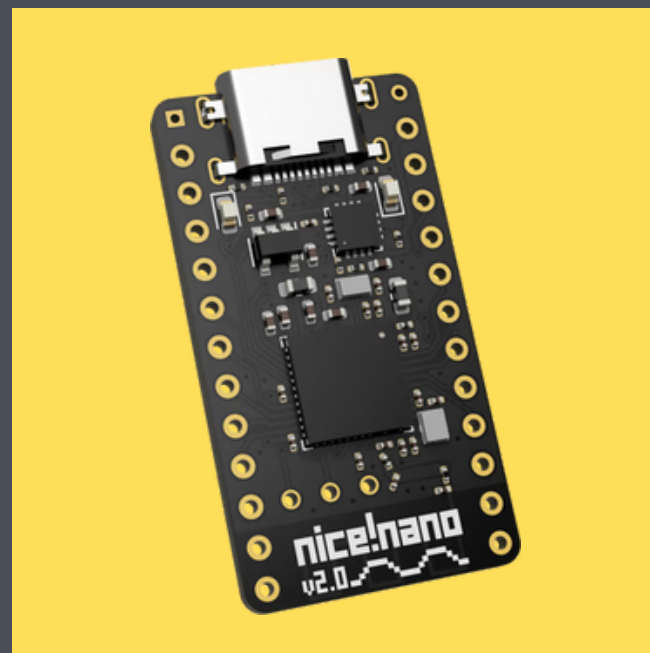
Align switches properly if the keyboard has no plate



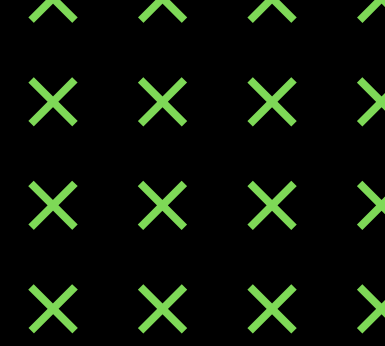
3. WIRELESS

Special requirements

- ✦ 301230 batteries
- ✦ tall mill-max sockets + mill-max pins
- ✦ bluetooth-capable controller

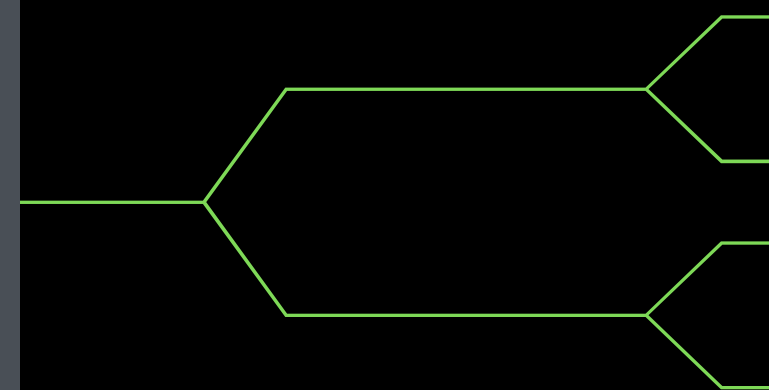
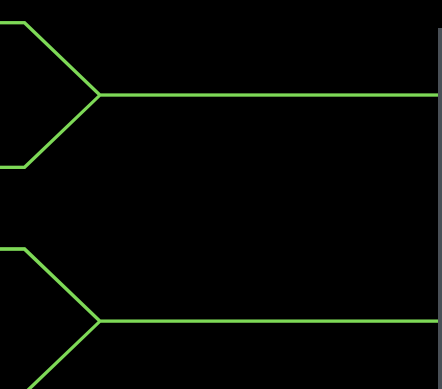


THANKS!



Acknowledgements

TOMÁŠ ROUN - IT-CR-CTE



USEFUL LINKS



Make sure to buy BLU-TACK! :D

* Tools:

- TS90 - <https://www.aliexpress.com/item/4000814775357.html>
- TS101 - <https://fr.aliexpress.com/item/1005005455265775.html>
- Pinecil V2 - <https://www.aliexpress.com/item/1005003415737959.html>
- Desolder pump - <https://t.ly/crzz> (amazon.fr)

* Parts:

- Magnetic USB-C - https://t.ly/tv5_ (amazon.fr)
- Sockets - <https://gist.github.com/jovfg/5585c6ebb20000085f25581575c65764>
- Battery - <https://t.ly/9LM2> (aliexpress.com)
- Nice!Hano - <https://nicekeyboards.com/nice-nano#find-a-store>