

CERN EAM User Meeting

11 May, 2023

CERN Asset & Maintenance Management Service
EAM.Support@cern.ch

Agenda

10:00 → 10:10 **General News**

Speaker: David Widegren (CERN)

10:10 → 10:25 **Updates on EAM Light**

Speaker: Lukasz Piotr Pater (CERN)

10:25 → 10:40 **Overview of EAM Store Kiosk**

Speaker: Peter Jurcso (CERN)

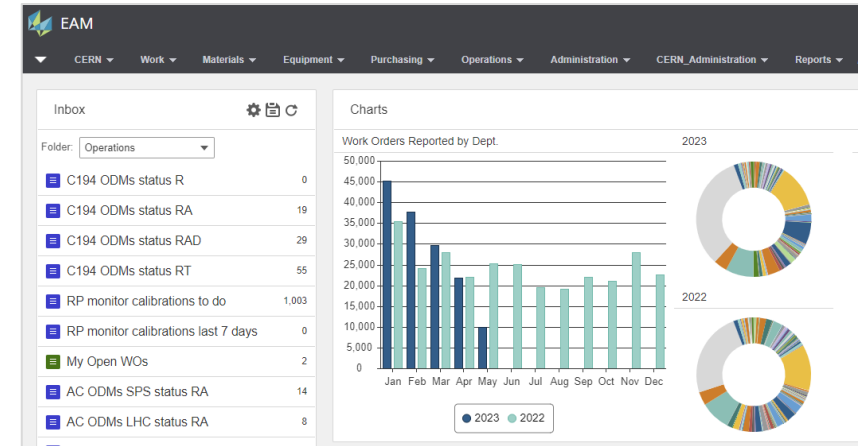
10:40 → 11:00 **EAM Store Kiosk for FLEX**

Speaker: Elsa Clerc (CERN)

EAM Version 12

EAM Version 12

- In Production since 29 April.
- Many internal improvements and bug fixes, but no major changes of the user interface.



Examples of improvements:

- Picket Tickets now have User Defined Fields.
- Checklists now support the input entity “Equipment” or “Part”
- Disactivating a PM Schedule now deletes pending WOs.
- Many new fields for Cases (Important for the EAM Logbook.)
- New options for cost handling of MEC WOs.

Examples of new features:

- MS Project integration: Support up to MS Project 2021.
- New Equipment 360 Overview features
- New Physical Inventory function (“inspired” from CERN!)
- New Alerts of type “Pick Tickets”.

EAM News

Descriptions have been updated to English for:

- Work Order Status
- Work Order Types
- Equipment Status (Assets, Positions, Systems & Locations)

- This was done following the decision taken at EAM Configuration Meeting in 2022.
- Please note that the corresponding codes remain unchanged.

- See next slides for details and for reference!

- In case of questions, please don't hesitate to contact: eam.support@cern.ch .

Work Orders

Code	Current description	Proposed description
BRKD	BRKD – Breakdown	BRKD – Breakdown
CA	CA – Correctif Amelioration	CA – Corrective – Improvement
CAL	CAL – Calibration	CAL – Calibration
CD	CD – Correctif Depannage	CD – Corrective - Repair
CF	CF – Correctif différé shutdown	CF – Corrective – Shutdown
CR	CR – Correctif Reparation ou depannage > 2 heures	CR – Corrective – Repair > 2h
DE	DE – Design	DE - Design
EDH	EDH – EDH Document Generation	EDH - EDH Document Generation
EX	EX – Exploitation	EX - Operation
ICF	ICF – Installation and Commissioning	ICF - Installation and Commissioning
INSP	INSP – Inspection	INSP - Inspection
MEC	MEC – Multiple Equipment Child	MEC - Multiple Equipment Child
MTF	MTF – Manufacturing	MTF - Manufacturing
OB	OB – Observation	OB – Observation

Code	Current description	Proposed description
PC	PC - Preventif conditionnel	PC – Preventive - Conditional
PM	PM - Preventive maintenance	PM - Preventive Maintenance
PRM	PRM - Predictive Maintenance	PRM - Predictive Maintenance
PS	PS - Preventif systematique	PS – Preventive – Recurrent
PS1	PS1 - Preventif sans routine	PS1 – Preventive - Unplanned
RP	RP - Repair/revision in workshop	RP - Repair/revision in workshop
ST	ODM en attente	ST – Standing Work Order
T0	T0 - Travaux immediat	T0 – Work - Immediate
T1	T1 - Travaux divers	T1 – Work - Various
T2	T2 - Travaux neufs (installation)	T2 – Work – New Installation
T3	T3 - Travaux avec Devis	T3 – Work – Quotation based
T4	T4 - Travaux avec Devis et Documentation	T4 – Work – with Quotation and Documentation
T5	T5 - Contrats Cadres	T5 – Framework Contract

Equipment

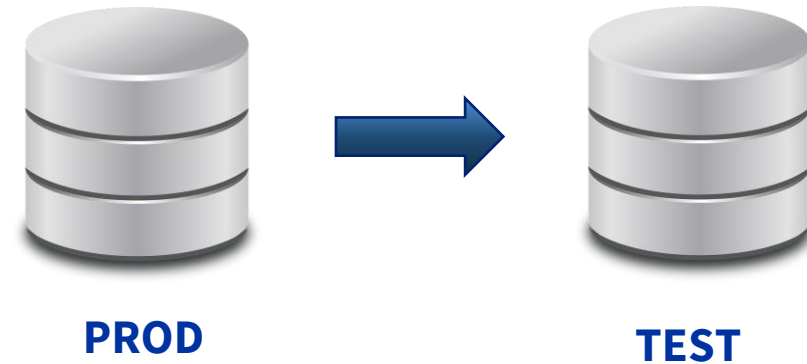
Code	Current description	Proposed description
A	En attente d'achat, Awaiting purch./deliv.	Awaiting purchase/delivery
B	Achete/en magasin, Purchased/in stores	Purchased/in store
C	En magasin, In stores	In store
CIR	En reparation, Under Repair	In Repair
CRR	A reparer, Waiting for Repair	To be Repaired
D	Hors service definitif	Out of Service, Withdrawn
DCUP	Recuperation	Recycled
DNR	Hors Service, Non Repairable	Out of Service, Non Repairable
DP	Hors service provisoire	Provisionally Out of Service
DPE	Hors service, Perdu	Out of Service, Lost
DPRE	Pre-Recuperation	Pre-Recycled
DPRT	Perdu	Lost
DVNT	Vendu	Sold
DX	Hors service, Rejete	Out of Service, Rejected
I	Installe et Maintenu	Installed
IACC	Accepte	Accepted
IAV	Available	Available
IC	Installe, Consigne	Installed, Locked-Out
ICMP	Compense	Compensated
ICUP	Recuperation*	Recycled
ID	Installe, Hors service	Installed, Out of Order
IDP	En service, a reassigner (reserve inspect.)	Installed, To be reassigned

Code	Current description	Proposed description
IE	Non maintenu, En etude	Study, not maintained
IF	Installe, Pas de preventif	Installed, no preventive maint.
IMFT	En fabrication	In manufacturing
IN	Installe, A prendre en compte par mnt	Installed, maint. to be defined
INM	Installe Non Maintenu	Installed, not maintained
IOT	Others	Others
IPRE	Pre-Recuperation	Pre-Recycled
IPRT	Non-localisé/Perdu	Location not known, Lost
IQA	Quality Assurance Checks	Quality Assurance Checks
IR	Receptionne	Received
IREN	Rented	Rented
IREP	Repair	Repair
IRP	En attente de reparation	To be Repaired
IS	Installe, en stand by	Installed, in Stand-by
IST	Stocké	Stored
IUM	Under Maintenance	Under Maintenance
IVNT	Vendu	Sold
IW	Dechets	Waste
IWFR	Waiting For Repair	To be Repaired
REP	En réparation	In Repair
T	In Transit	In Transit
TR	En transit	In Transit

EAM News

Production to Test Database Copy

- Our EAM Test environment will be updated with Production data on **9th of June**.
- All data stored in Test will be lost, if not doing a “backup”. (e.g. export to Excel)
- In case of problems please contact EAM.support@cern.ch asap.



9 June 2023

5th Asset & Maintenance Management Workshop

- The 5th international AMM Workshop will be hosted by ESS, Lund (Sweden), 27-29 September 2023.
- The AMM Workshops are normally well attended by other research organizations.
- ESS is also a user of HxGN EAM.
- People from CERN EAM Service team will participate, but attendance is open to all.
- Conference cost: 300 Euros.
- More details: <http://www.ammw2023.org>.

Asset and Maintenance Management Workshop 2023

EUROPEAN SPALLATION SOURCE

27-29 September 2023
ESS Lund
<http://www.ammw2023.org>

Overview

- Registration Page
- Important Dates
- Workshop Programme
- Call for Abstracts
- Abstracts & Oral Presentations Instructions
- Timetable
- Contribution List
- Practical Information
 - Ticket purchase via the Skånetrafiken app

Contact

- Ola.Nanzell@ess.eu
- mehak.khurana@ess.eu
- jasmina.krusic@ess.eu

The ESS Asset and Maintenance Management team invites you to the **5th Asset and Maintenance Management Workshop - AMMW 2023**, hosted at the European Spallation Source in Lund, Sweden.

Following the tradition of previous conferences, the workshop program will include presentations by invited key note speakers and provide sufficient time for plenary and group discussions. The program will be complemented by a tour and a group dinner.

The ESS Asset and Maintenance Management team is looking forward to welcoming you in September!

Starts 27 Sep 2023, 08:00
Ends 29 Sep 2023, 16:00
Europe/Stockholm

ESS Lund
TychoBrahe
Partikelgatan 2
224 84 Lund
Sweden

Ola Nanzell

Poster

The call for abstracts is open
You can submit an abstract for reviewing.

Submit new abstract

Our EAM Platform

One system, multiple interfaces

