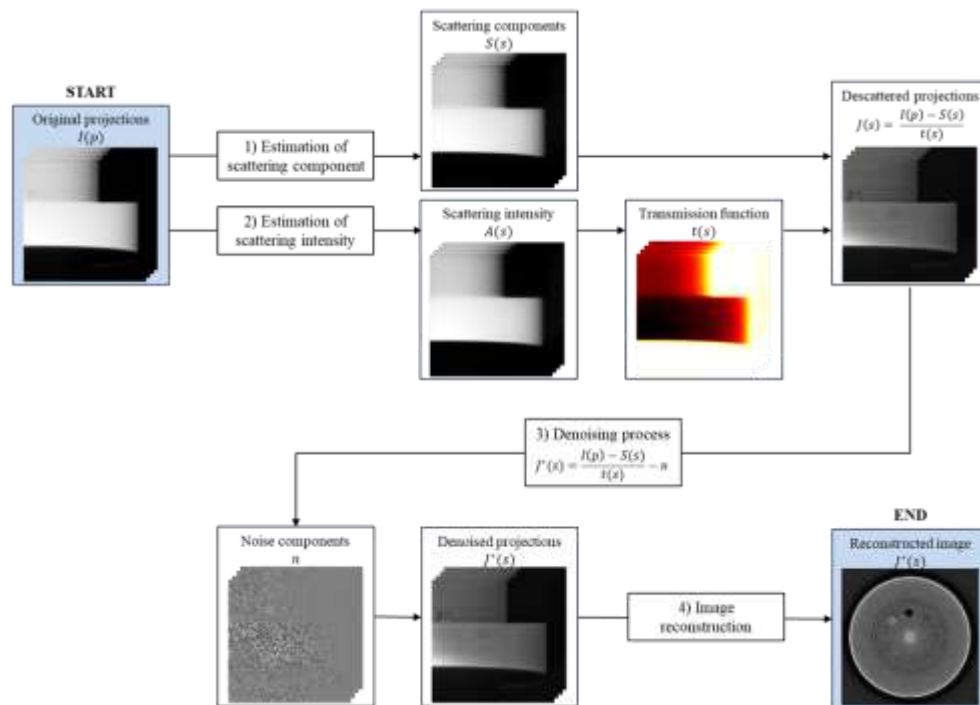
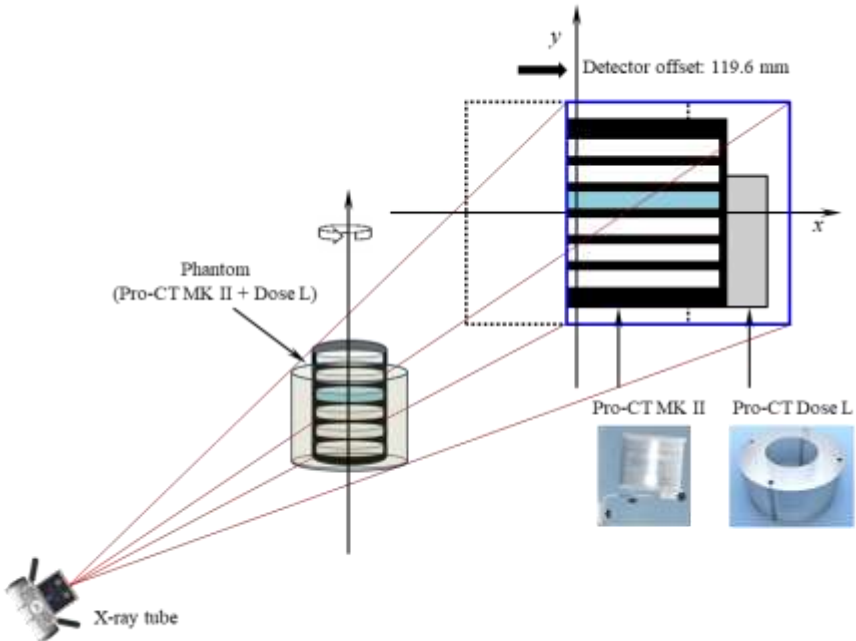


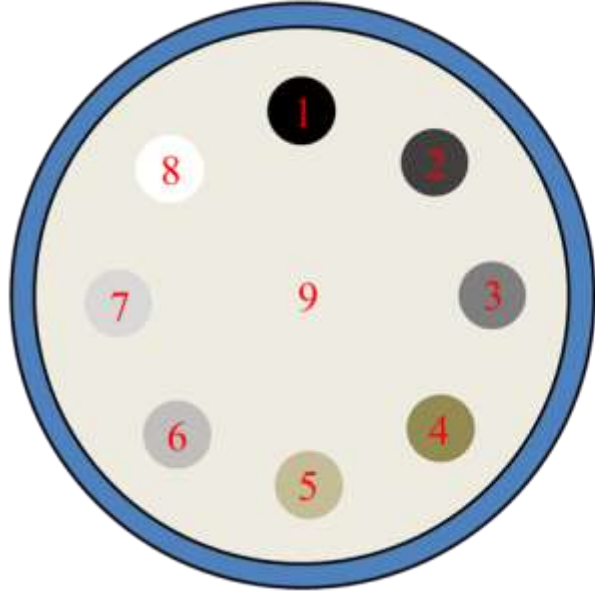
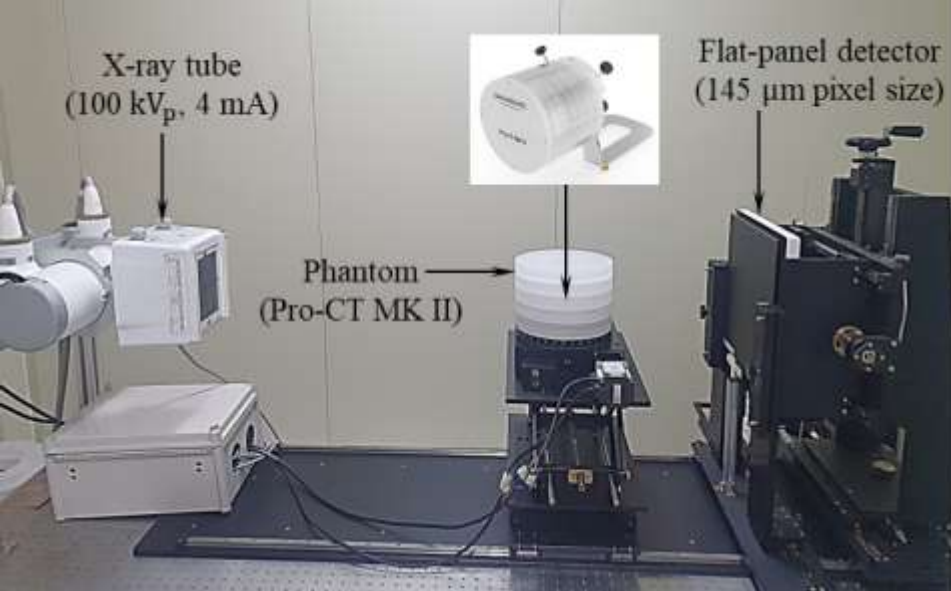
Model-based scatter correction method for improving image visibility in CBCT with an offset-detector configuration

Jiwon Park¹, Duhee Jeon¹, Seohee Han¹, Changwoo Seo¹, and Hyosung Cho^{1,*}

¹. Department of Radiation Convergence Engineering, Yonsei University, Wonju 26493, Republic of Korea







Module no.	Material
1	Air
2	LDPE
3	ABS
4	Water
5	PA-6
6	PET
7	POM-C
8	PTFE
9	PMMA

