

# Energy Energy correlators in DIS

**Haitao Li**  
**Shandong University**

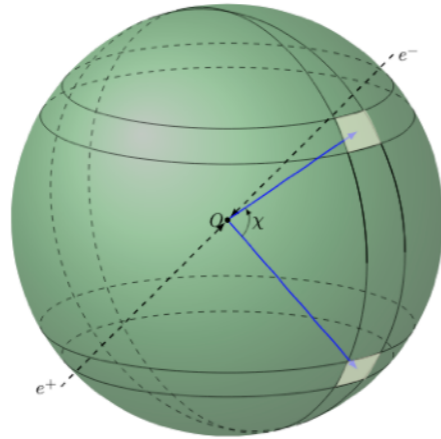
**arXiv:2006.02437, arXiv: 2102.05669, arXiv: 2312.07655**  
**with H. Cao, Y. Makris, Z. Mi, I. Vitev, Y.J. Zhu**

**ICHEP 2024 | PRAGUE**

**18-July-2024**

# EEC and TEEC

$e^+e^-$  Collisions

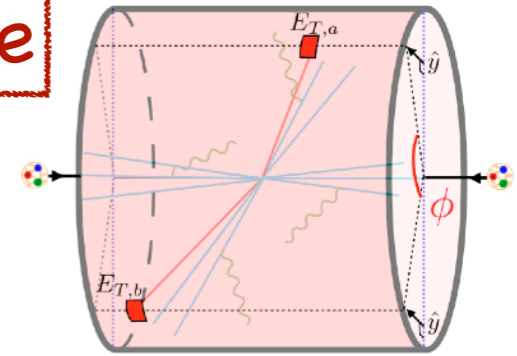


$$\text{EEC} = \sum_{a,b} \int d\sigma_{V \rightarrow a+b+X} \frac{2E_a E_b}{Q^2 \sigma_{\text{tot}}} \delta(\cos(\theta_{ab}) - \cos(\chi))$$

- sum over all the jets for each event
- sum over all the particles for each event

*Basham et al 1978*  
*Moult, Zhu, 2018*

Hadronic initial state



observable

$$\text{TEEC} = \sum_{a,b} \int d\sigma_{pp \rightarrow a+b+X} \frac{2E_{T,a} E_{T,b}}{|\sum_i E_{T,i}|^2} \delta(\cos \phi_{ab} - \cos \phi)$$

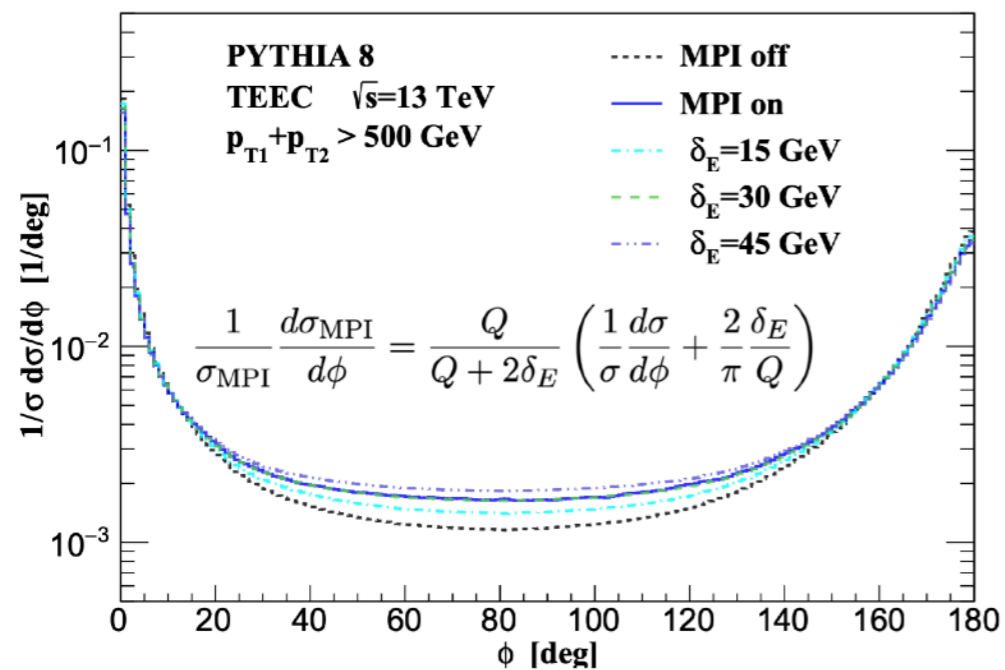
- weighted cross section
- the soft radiation does not contribute directly to the observable at leading power
- soft gluon contributes only via recoil

*Ali et al 1984*  
*Gao, HTL, Moult, Zhu, 2019, 2023*

# EEC and TEEC

EEC/TEEC is a class of event shape variables

where nonperturbative effect is supposed to be small

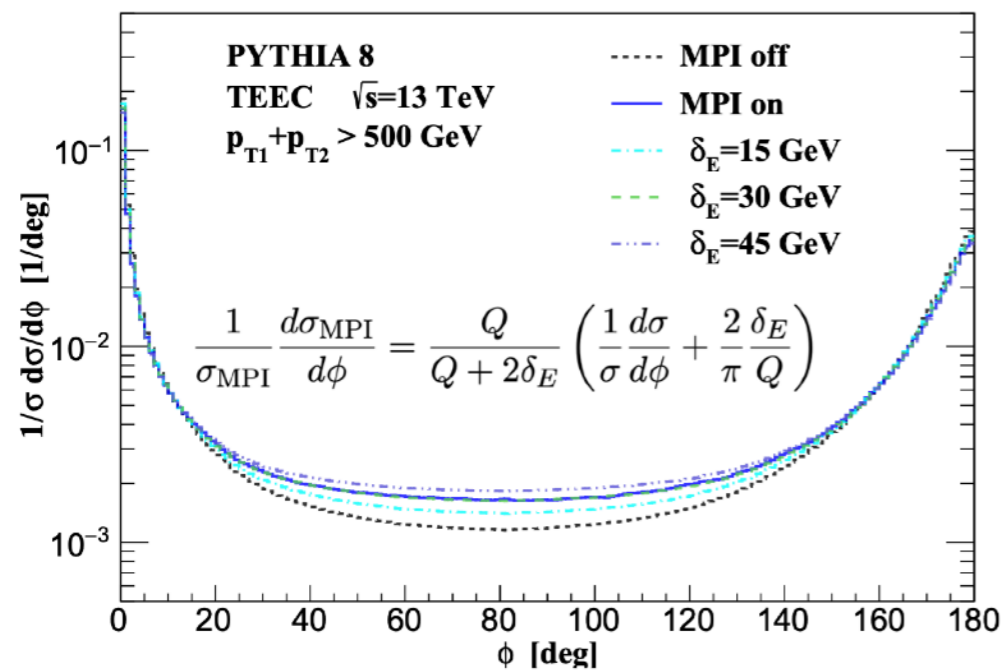


*Gao, HTL, Moult, Zhu, 2023*

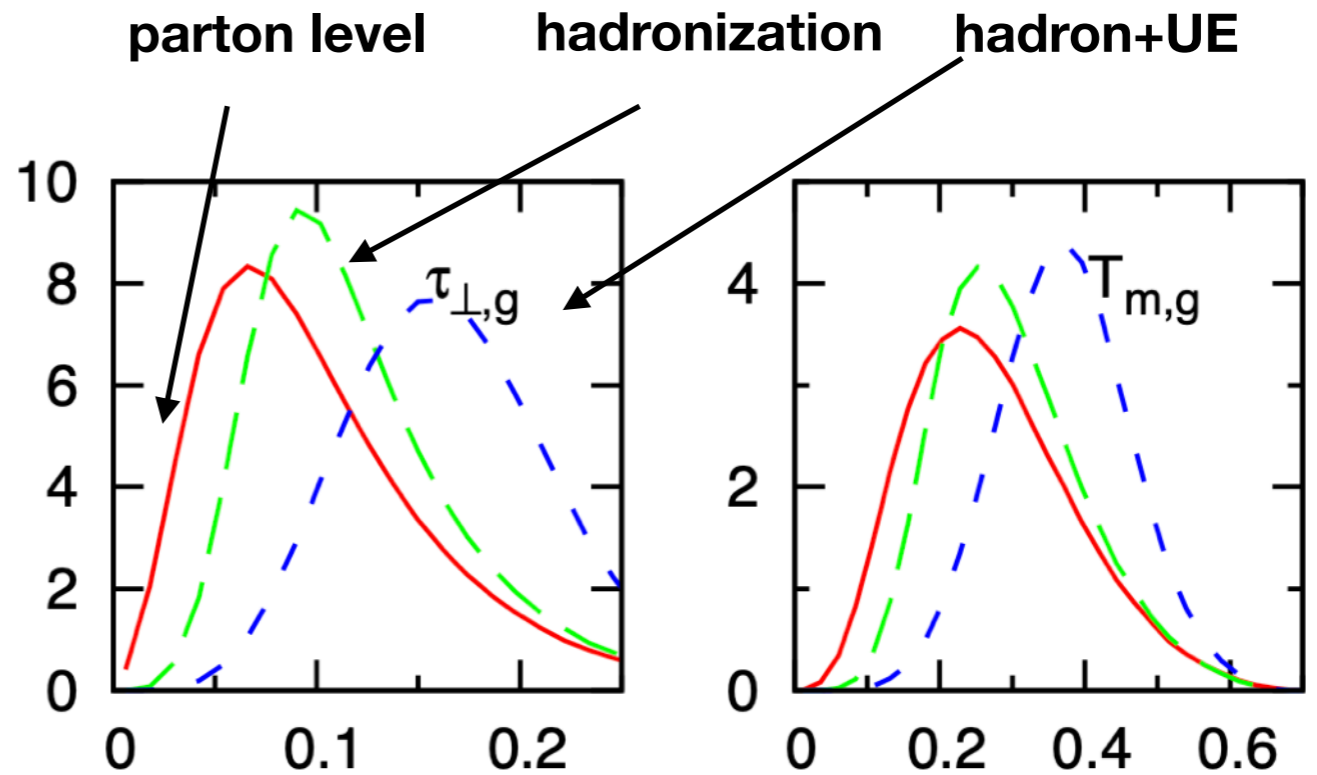
# EEC and TEEC

EEC/TEEC is a class of event shape variables

where nonperturbative effect is supposed to be small



*Gao, HTL, Moult, Zhu, 2023*

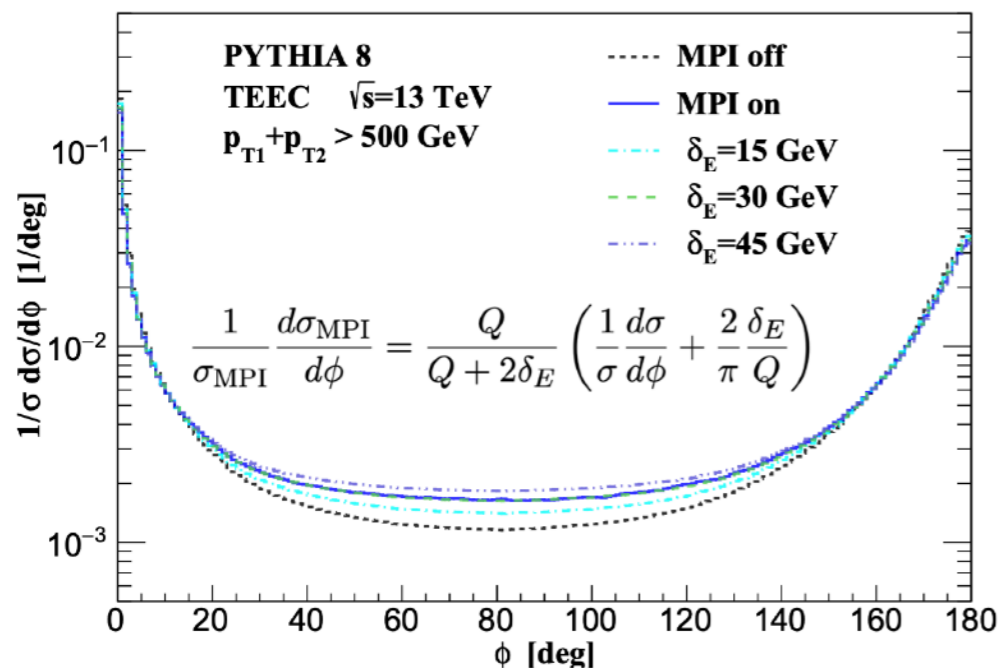


*Banfi, Salam and Zanderighi 2010*

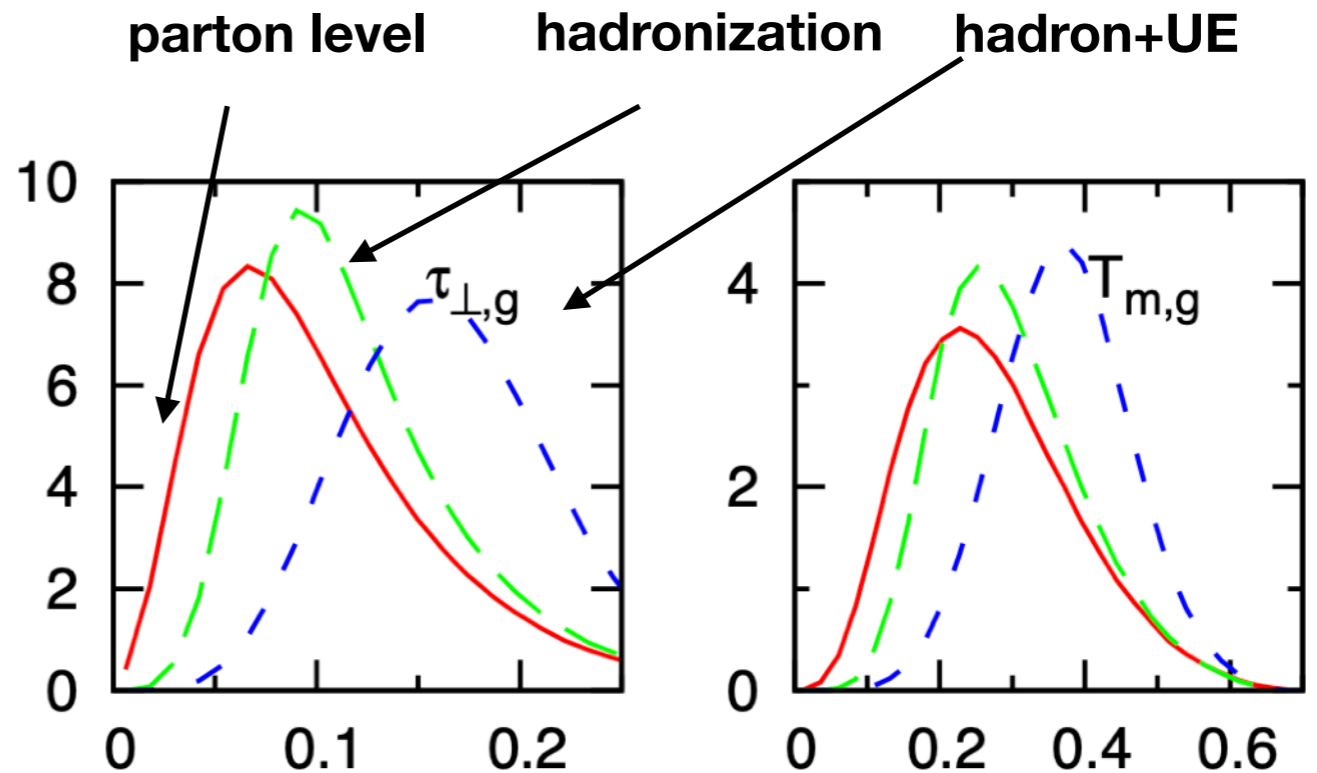
# EEC and TEEC

EEC/TEEC is a class of event shape variables

where nonperturbative effect is supposed to be small



*Gao, HTL, Moul, Zhu, 2023*



*Banfi, Salam and Zanderighi 2010*

## Recent developments (EEC/TEEC in DIS)

*Nucleon Energy Correlators for Color Glass Condensate, Liu, Zhu et al, 2022,2023*

*Collins-type EEC jet in DIS, Kang et al, 2023*

*Imaging Cold Nuclear Matter with Energy Correlators, Devereaux et al 2023*

*TEEC in the Color-Glass Condensate at the Electron-Ion Collider, Kang et al 2023*

*TMDs from Semi-inclusive Energy Correlators, Liu, Zhu, 2024*

*NEEC and fracture function, Chen, Ma, Tong, 2024*

*and many other works*

# TEEC in DIS

In Lab Frame at the EIC

*HTL, Vitev, Zhu, 2020*

Definition

$$\text{TEEC} = \sum_a \int d\sigma_{lp \rightarrow l+a+X} \frac{E_{T,l} E_{T,a}}{E_{T,l} \sum_i E_{T,i}} \delta(\cos \phi_{l_a} - \cos \phi)$$

sum over  
all hadrons

energy weighted

measure azimuthal  
angle correlations

# TEEC in DIS

In Lab Frame at the EIC

HTL, Vitev, Zhu, 2020

Definition

$$\text{TEEC} = \sum_a \int d\sigma_{lp \rightarrow l+a+X} \frac{E_{T,l} E_{T,a}}{E_{T,l} \sum_i E_{T,i}} \delta(\cos \phi_{la} - \cos \phi)$$

sum over all hadrons

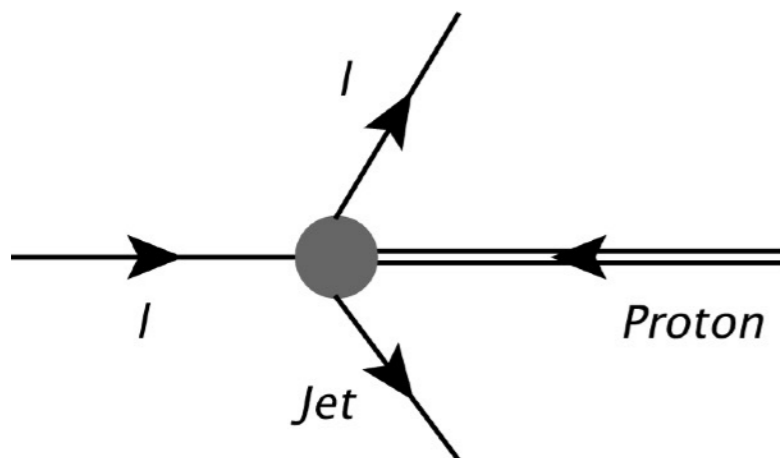
energy weighted

measure azimuthal angle correlations

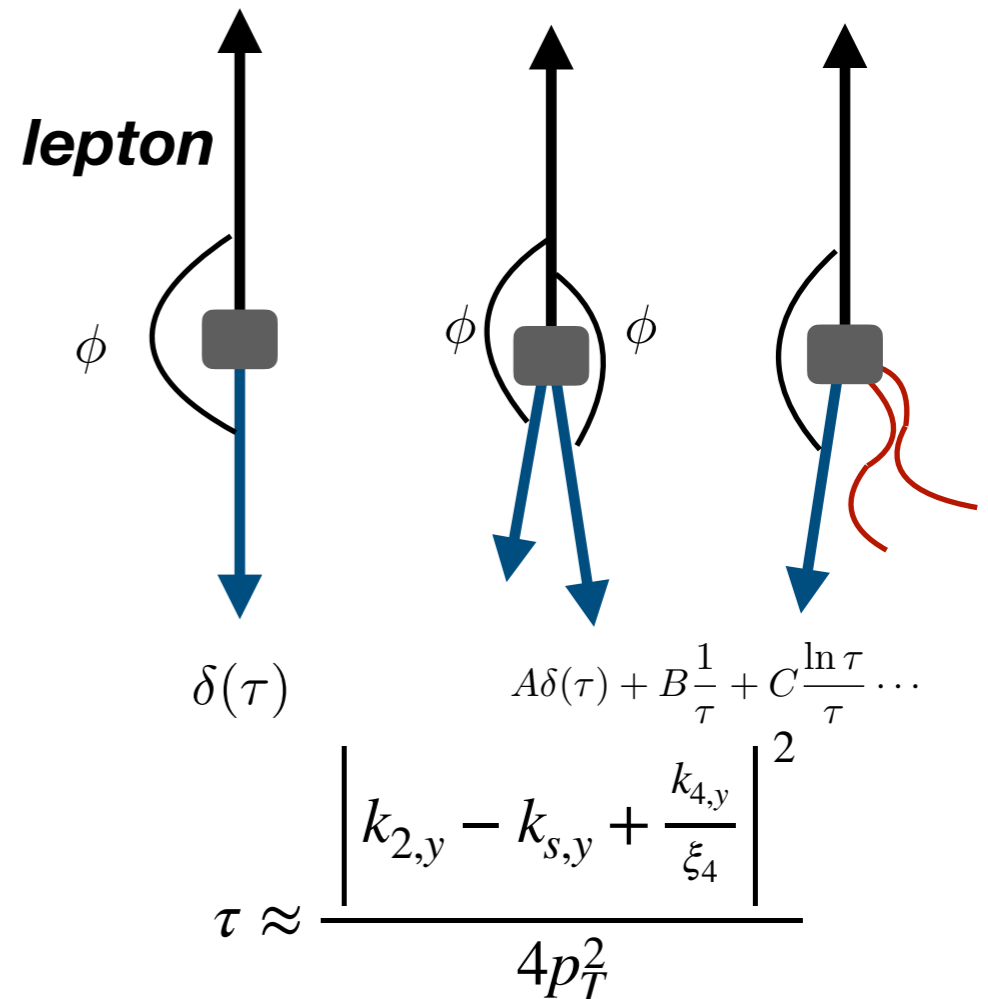
azimuthal angle correction between particles and lepton  $\tau = \frac{1 + \cos \phi}{2}$

For  $\tau \rightarrow 1$ , large angle radiation

For  $\tau \rightarrow 0$ , small angle radiation



In transverse plane





# EEC in DIS

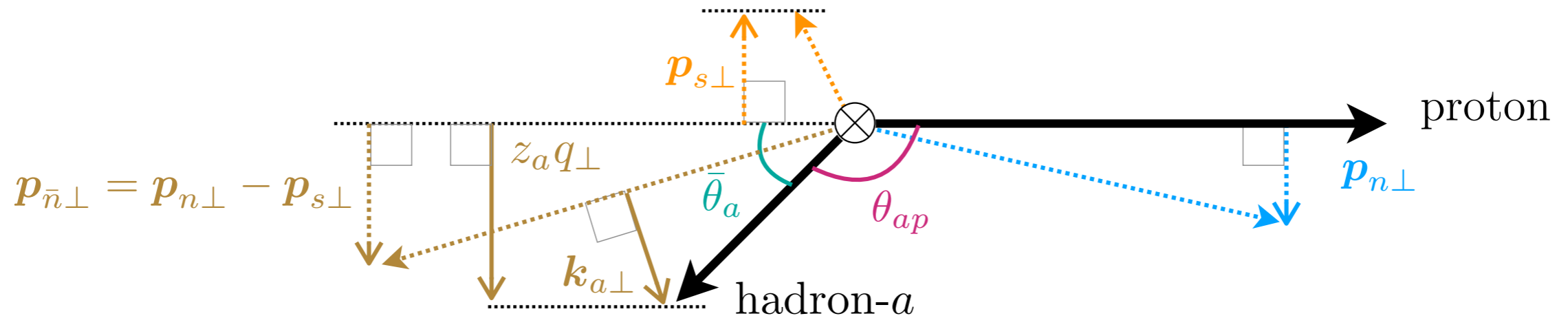
In Breit Frame at the EIC

*HTL, Makris, Vitev 2021*

From Lab frame to Breit Frame

- boost the system to proton rest frame
- rotate the system: virtual photon has zero  $\vec{q}_T$
- boost along z direction: virtual photon has zero energy

$$\gamma^* + \text{proton} \rightarrow \text{jet/hadron} + X$$



We proposed a new definition of EEC in DIS:

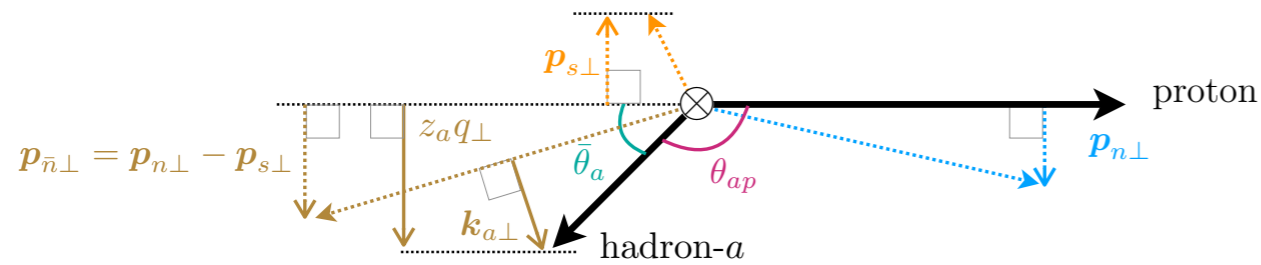
correlation between initial proton and final state hadron

$$\text{EEC} = \sum_a \int d\sigma_{lp \rightarrow l+a+X} \left( \frac{p \cdot p_a}{\sum_i p \cdot p_i} \right) \delta(\cos \chi - \cos \theta_{ap})$$

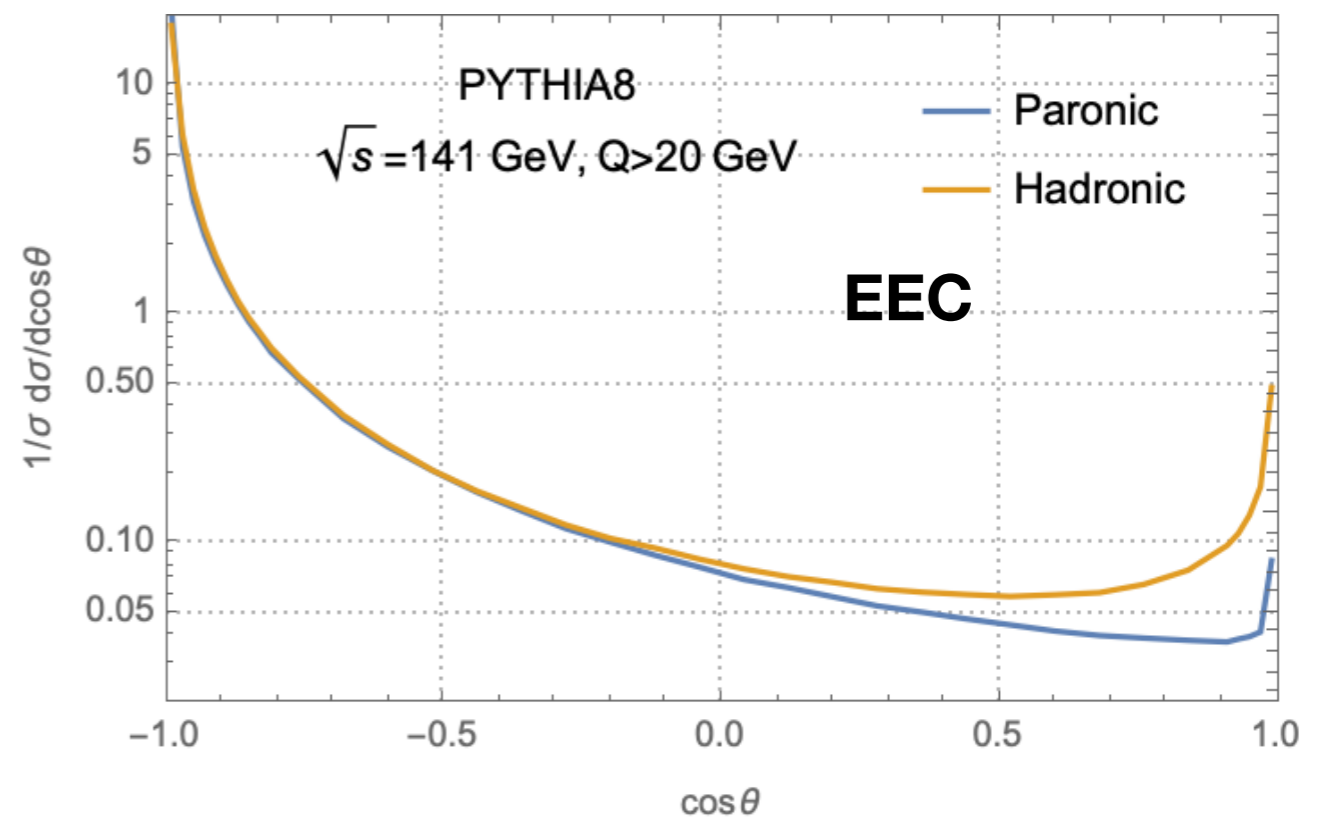
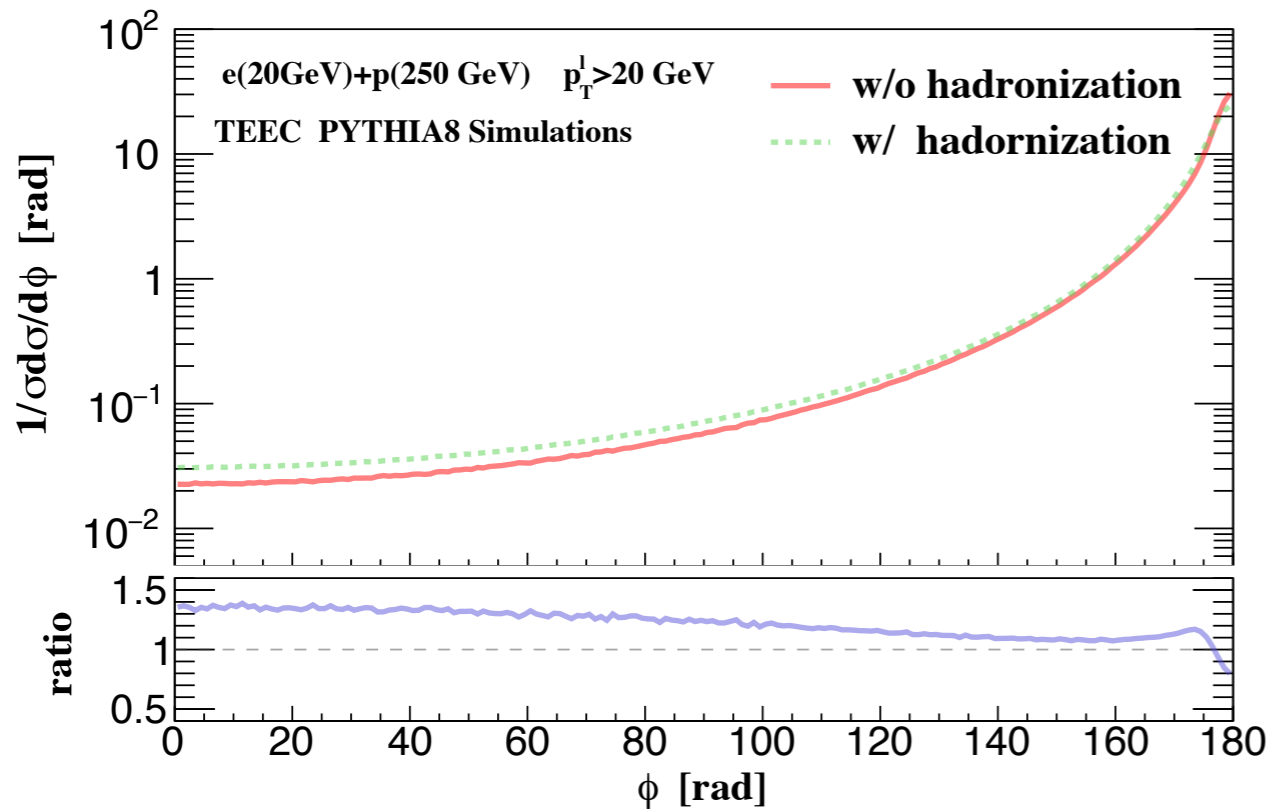


# TEEC/EEC in DIS

$$\text{EEC} = \sum_a \int d\sigma_{lp \rightarrow l+a+X} \left( \frac{p \cdot p_a}{\sum_i p \cdot p_i} \right) \delta(\cos \chi - \cos \theta_{ap})$$

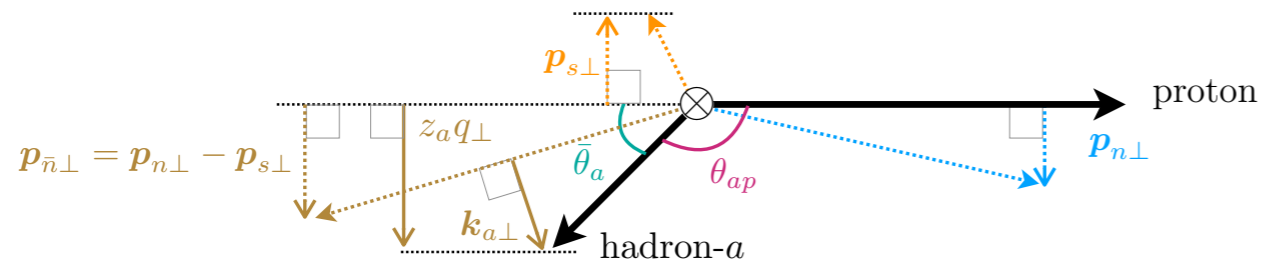


- weight function is Lorentz Invariant
- radiation close to the beam direction is suppressed
- soft radiation/hadronization effect is suppressed

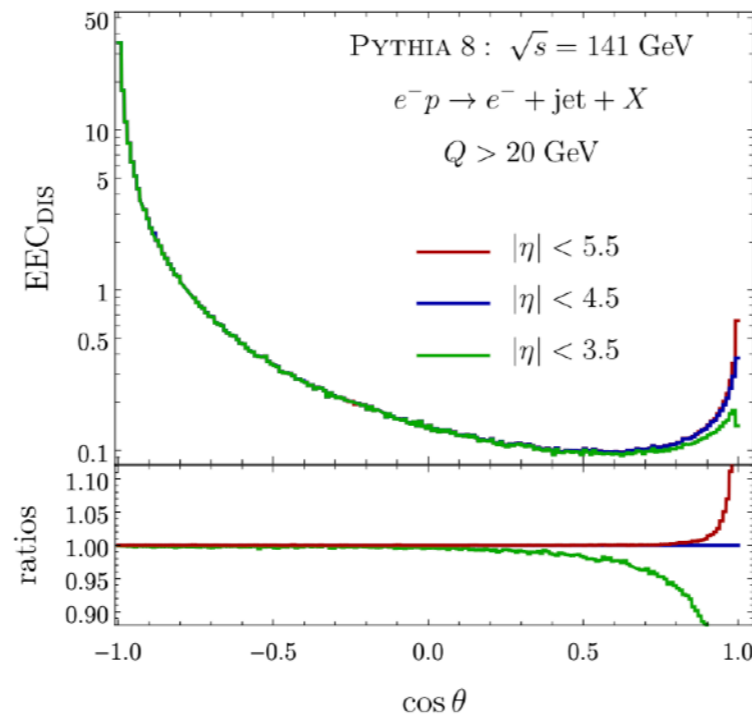
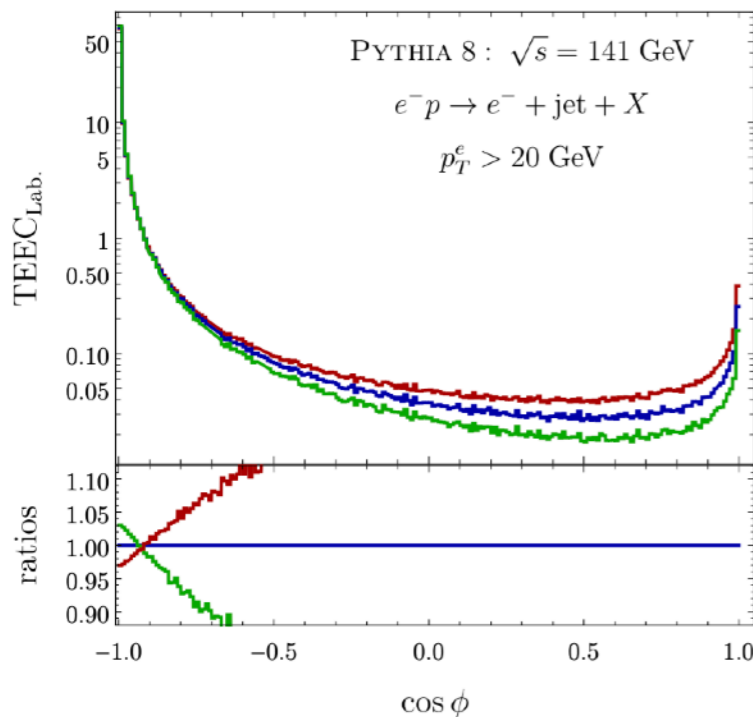


# TEEC/EEC in DIS

$$\text{EEC} = \sum_a \int d\sigma_{lp \rightarrow l+a+X} \left( \frac{p \cdot p_a}{\sum_i p \cdot p_i} \right) \delta(\cos \chi - \cos \theta_{ap})$$



- weight function is Lorentz Invariant
- radiation close to the beam direction is suppressed
- soft radiation/hadronization effect is suppressed



normalized to the cross section  
with cut  $|\eta| < 5.5$

In Breit frame, rapidity cut only  
changes the cross section tail region

# TEEC/EEC in DIS

Definition

$$\text{TEEC} = \sum_a \int d\sigma_{lp \rightarrow l+a+X} \frac{E_{T,l} E_{T,a}}{E_{T,l} \sum_i E_{T,i}} \delta(\cos \phi_{l_a} - \cos \phi)$$

In back-to-back limit, it is similar to 1-dimensional TMD factorization

hadron with small  $p_T$

TMD PDF

$$\frac{d\sigma_h}{d^2p_\perp} = \sum_f \int \frac{d\xi dQ^2}{\xi Q^2} Q_f^2 H(Q, \mu) \int \frac{db}{2\pi} e^{ib_\perp \cdot p_\perp} f_{f/N}(b, \xi, \mu, \nu)$$

$$S\left(b, \frac{n_2 \cdot n_4}{2}, \mu, \nu\right) \int dz F_{h/f}(z, b/z, E_4, \mu, \nu)$$

TMD soft      TMDFF

# TEEC/EEC in DIS

Definition

$$\text{TEEC} = \sum_a \int d\sigma_{lp \rightarrow l+a+X} \frac{E_{T,l} E_{T,a}}{E_{T,l} \sum_i E_{T,i}} \delta(\cos \phi_{la} - \cos \phi)$$

In back-to-back limit, it is similar to 1-dimensional TMD factorization

hadron with small  $p_T$

TMD PDF

$$\frac{d\sigma_h}{d^2p_\perp} = \sum_f \int \frac{d\xi dQ^2}{\xi Q^2} Q_f^2 H(Q, \mu) \int \frac{db}{2\pi} e^{ib_\perp \cdot p_\perp} f_{f/N}(b, \xi, \mu, \nu)$$

$$S\left(b, \frac{n_2 \cdot n_4}{2}, \mu, \nu\right) \int dz F_{h/f}(z, b/z, E_4, \mu, \nu)$$

TMD soft                      TMDFF

**sum over all hadrons in the final state**

$$\frac{d\sigma_h}{d\tau} = \sum_f \int \frac{d\xi dQ^2}{\xi Q^2} Q_f^2 H(Q, \mu) \int dk_y \int \frac{db}{2\pi} e^{-ib_y \cdot k_y} f_{f/N}(b, \xi, \mu, \nu)$$

$$S\left(b, \frac{n_2 \cdot n_4}{2}, \mu, \nu\right) \sum_h \int dz z F_{h/f}(z, b/z, E_4, \mu, \nu) \delta(\tau - \tau(k_y))$$

# TEEC/EEC in DIS

Definition

$$\text{TEEC} = \sum_a \int d\sigma_{lp \rightarrow l+a+X} \frac{E_{T,l} E_{T,a}}{E_{T,l} \sum_i E_{T,i}} \delta(\cos \phi_{la} - \cos \phi)$$

In back-to-back limit, it is similar to 1-dimensional TMD factorization

hadron with small  $p_T$

TMD PDF

sum over all hadrons in the final state

$$\frac{d\sigma_h}{d^2p_\perp} = \sum_f \int \frac{d\xi dQ^2}{\xi Q^2} Q_f^2 H(Q, \mu) \int \frac{db}{2\pi} e^{ib_\perp \cdot p_\perp} f_{f/N}(b, \xi, \mu, \nu)$$

$$S\left(b, \frac{n_2 \cdot n_4}{2}, \mu, \nu\right) \int dz F_{h/f}(z, b/z, E_4, \mu, \nu)$$

TMD soft                      TMDFF

$$\frac{d\sigma_h}{d\tau} = \sum_f \int \frac{d\xi dQ^2}{\xi Q^2} Q_f^2 H(Q, \mu) \int dk_y \int \frac{db}{2\pi} e^{-ib_y \cdot k_y} f_{f/N}(b, \xi, \mu, \nu)$$

$$S\left(b, \frac{n_2 \cdot n_4}{2}, \mu, \nu\right) \sum_h \int dz z F_{h/f}(z, b/z, E_4, \mu, \nu) \delta(\tau - \tau(k_y))$$

Jet function

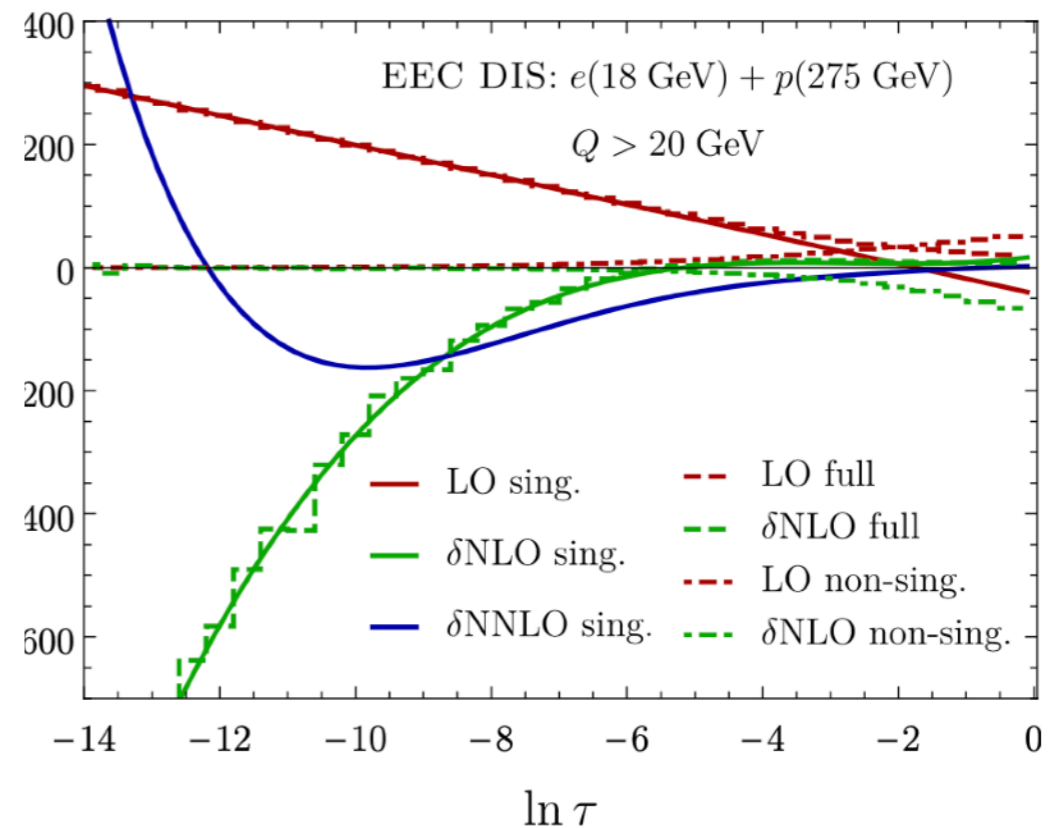
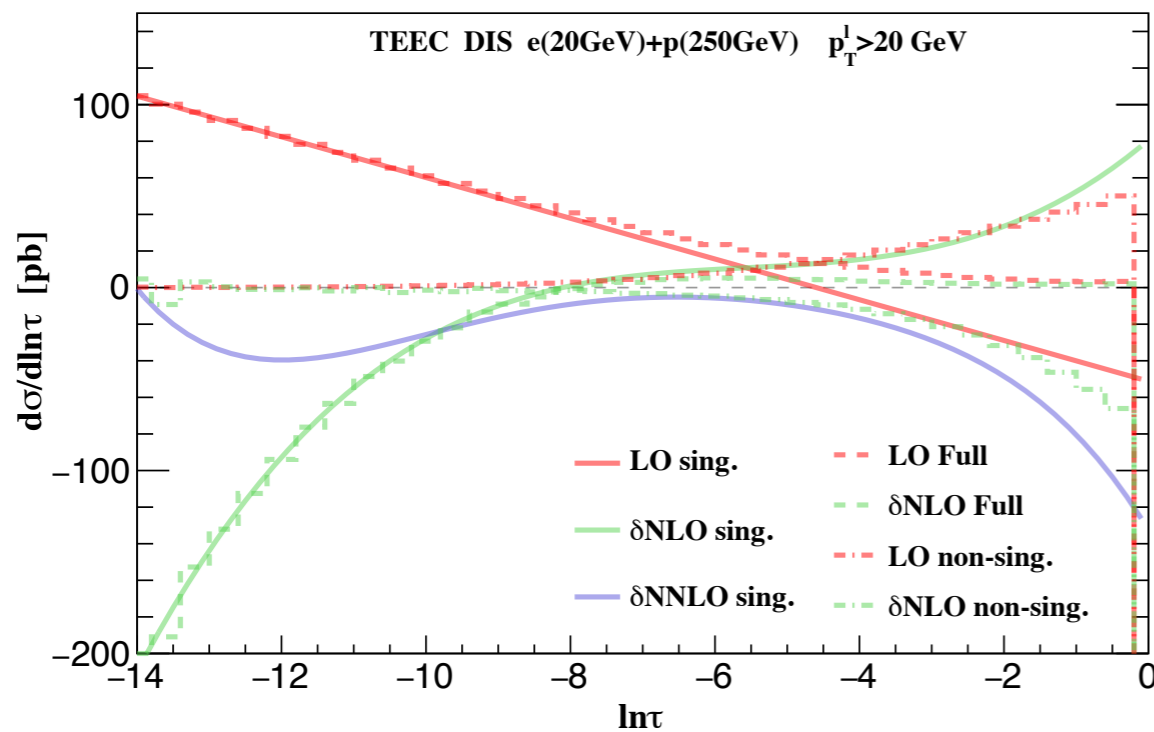
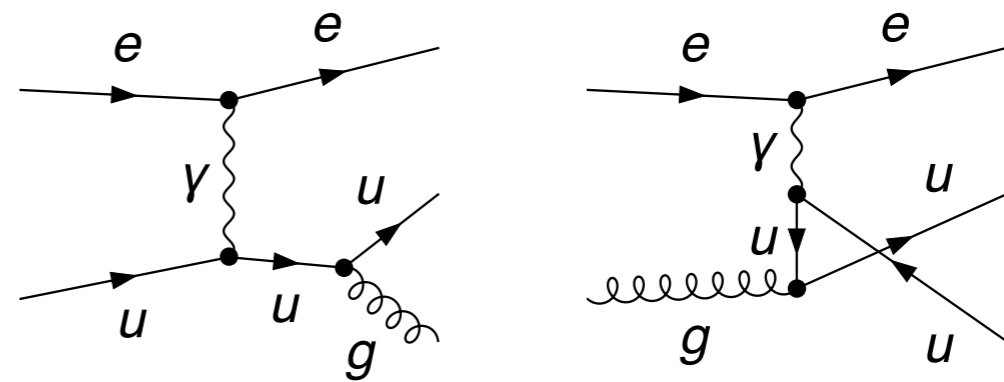
the second Mellin-Moment of the TMDFFs

$$\sum_N \int_0^1 dz z F_{N/q}(z, b_\perp/z, \nu) = \sum_{i,N} \int_0^1 dz z \int_z^1 \frac{d\xi}{\xi} d_{N/i}(z/\xi) \mathcal{C}_{iq}(\xi, b_\perp/\xi, \nu) + \mathcal{O}(b_T^2 \Lambda_{\text{QCD}}^2)$$

$$= \sum_{i,N} \int_0^1 dx x \mathcal{C}_{iq}(x, b_\perp/\xi, \nu) \int_0^1 d\xi \xi d_{N/i}(\xi) + \mathcal{O}(b_T^2 \Lambda_{\text{QCD}}^2)$$

# Fixed order results

The leading order process is  
calculated using NLOJET++



- Reproduced the singular behaviors
- Full control of the distributions in the back-back limit at LO and NLO.
- We obtained singular distribution up to NNLO (three loop anomalous dimensions)

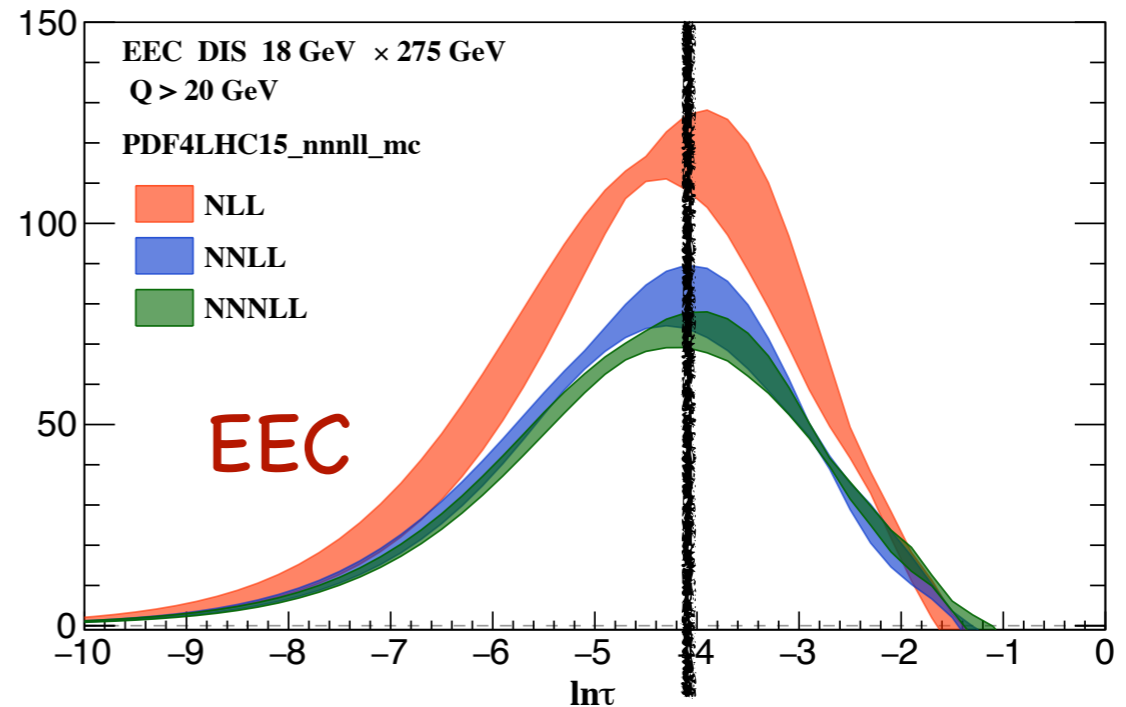
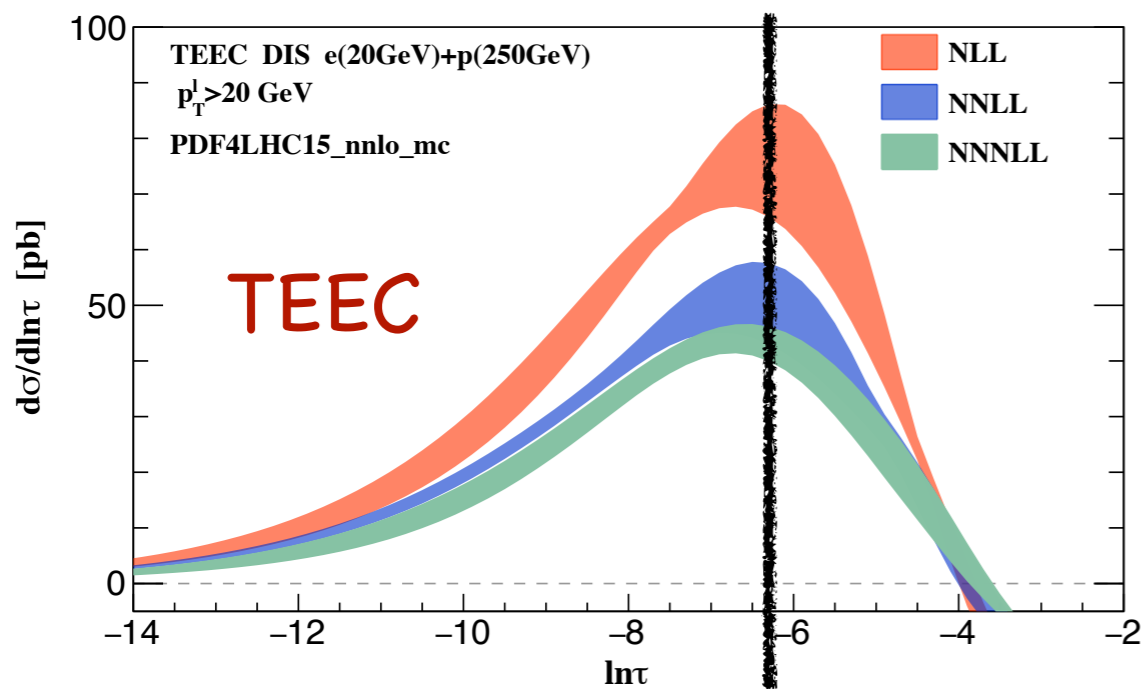
# Resummation

resummation accuracy

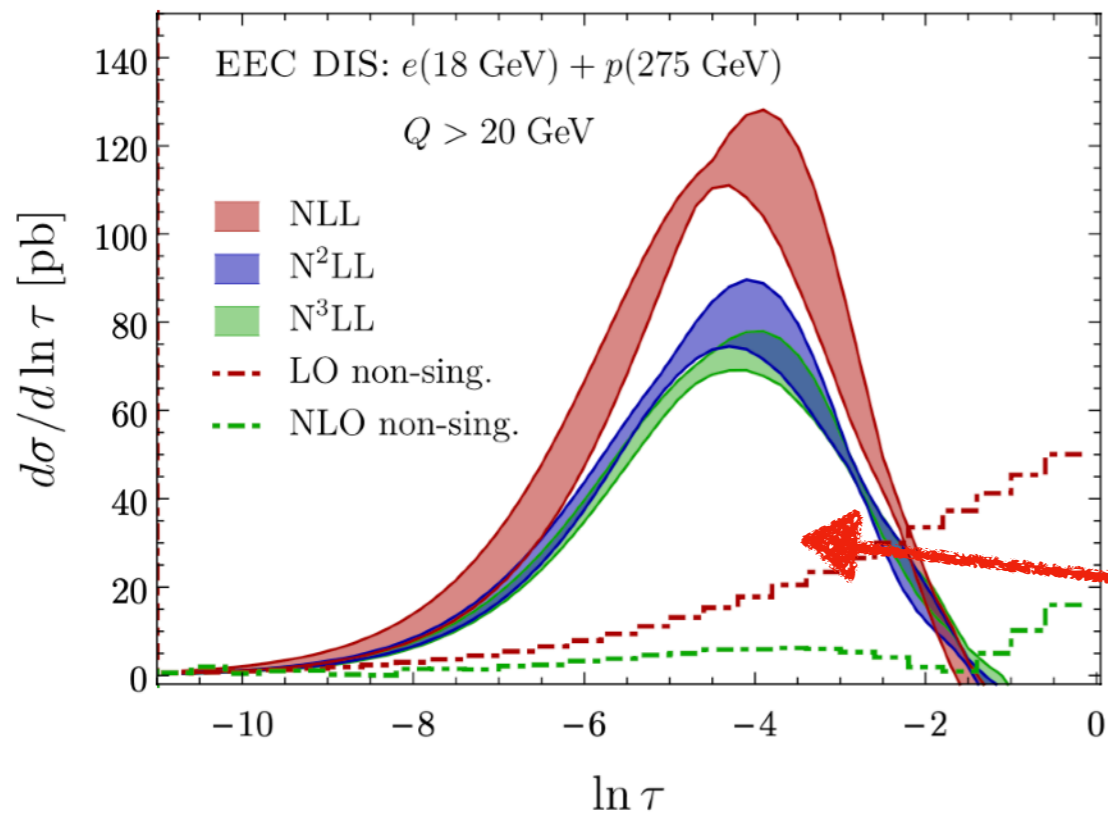
Accuracy	$H, J, S, B$	$\gamma_{\text{cusp}}$	$\gamma$	$\beta$
LL	Tree	1 loop	-	1 loop
NLL	Tree	2 loop	1 loop	2 loop
NNLL	1 loop	3 loop	2 loop	3 loop
N <sup>3</sup> LL	2 loop	4 loop	3 loop	4 loop



# Resummation



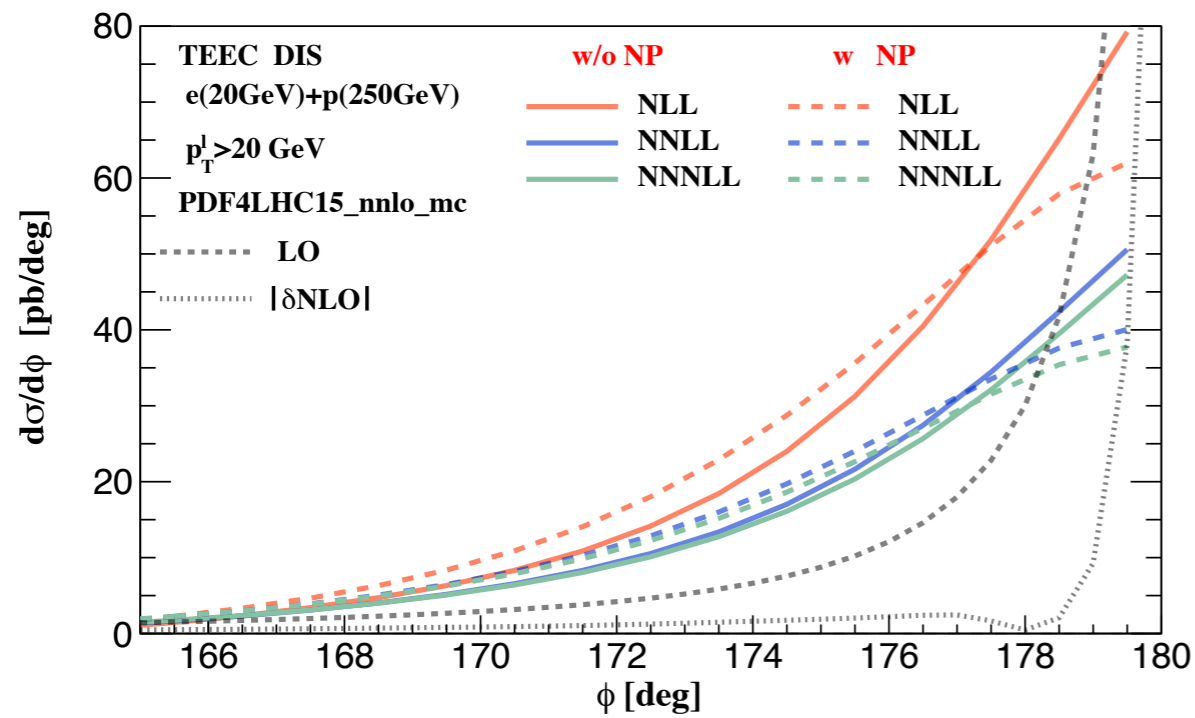
for EEC peak at larger  $\tau$ , means small NP effects



- Convergence in back-to-back limit after resummation
- Huge difference from NLL to NNLL and good perturbative convergence from NNLL to NNNLL
- Reduction of scale uncertainties order by order from NLL to NNNLL

Non-singular terms start to contribute which is less important for EEC

# Non-perturbative effects from TMD



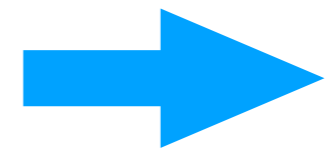
- corrections to rapidity evolution
- corrections to the TMD matrix element

Non-perturbative form factors, which extracted from the semi-inclusive hadron production in DIS.

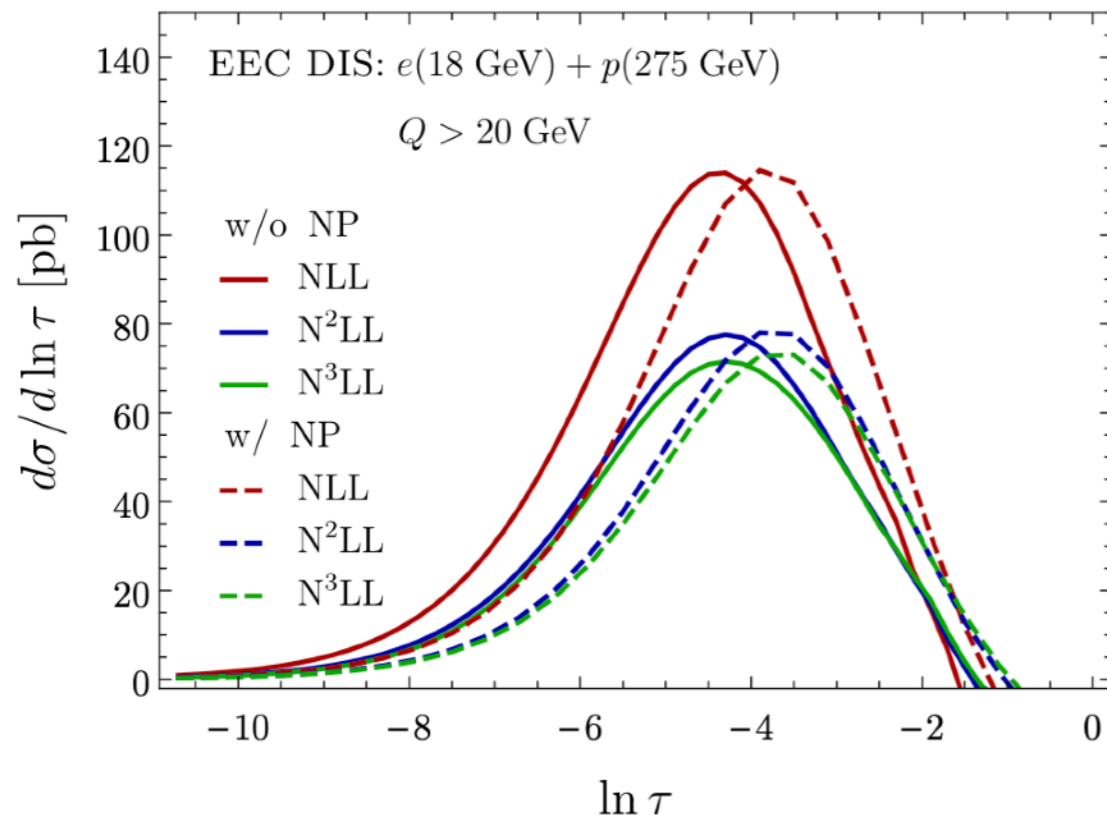
$$S_{NP} = \exp \left[ -0.106 b^2 - 0.84 \ln Q/Q_0 \ln b/b^* \right]$$

from TMD FFs

$$D_{i/a}^{NP}(y, b) = \exp \left( -0.042 \frac{b^2}{y^2} \right)$$



$$j_i(b) = \exp \left( -0.59b - 0.03b^2 \right)$$



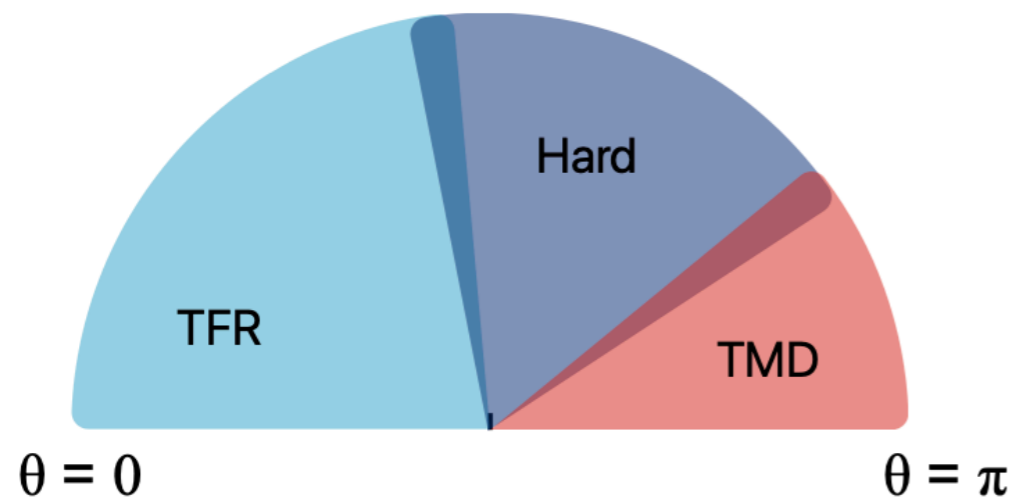
NP shifts the cross section

Sizable NP effects in back-to-back limit

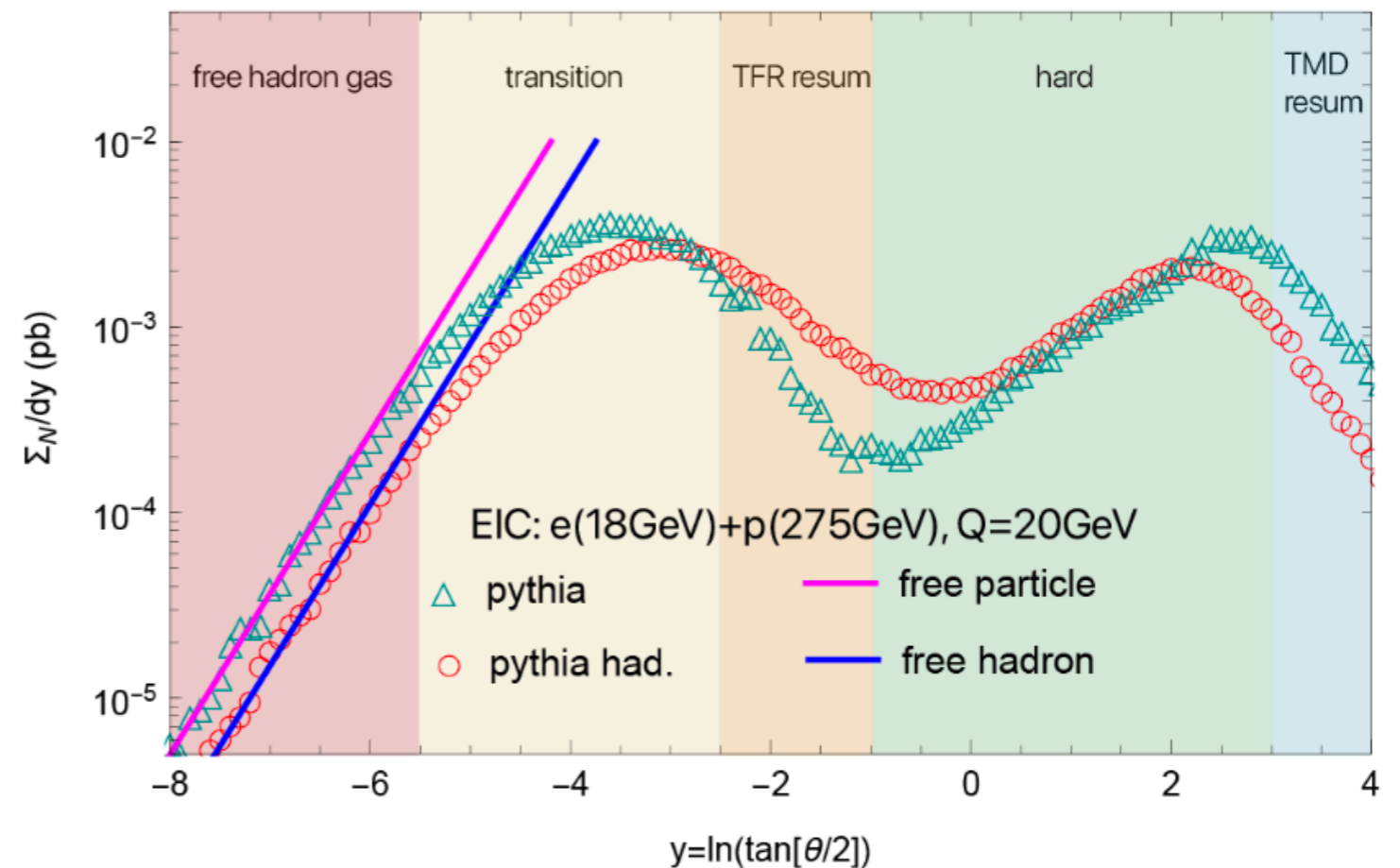
# Bjorken x weighted EEC

$$\text{EEC} = \frac{1}{\sigma} \sum_a \int d\sigma(\ell + h \rightarrow \ell + a + X) x_B^{N-1} \frac{P \cdot p_a}{P \cdot q} \delta(\cos \theta_{ap} - \cos \theta)$$

*NEEC, Liu, Zhu, arXiv:2209.02080; Cao, Liu, Zhu, arXiv:2303.01530.*



*Cao, HTL, Mi, arXiv:2312.07655*



TFR: the correlation of the energy flows from the initial nucleon.

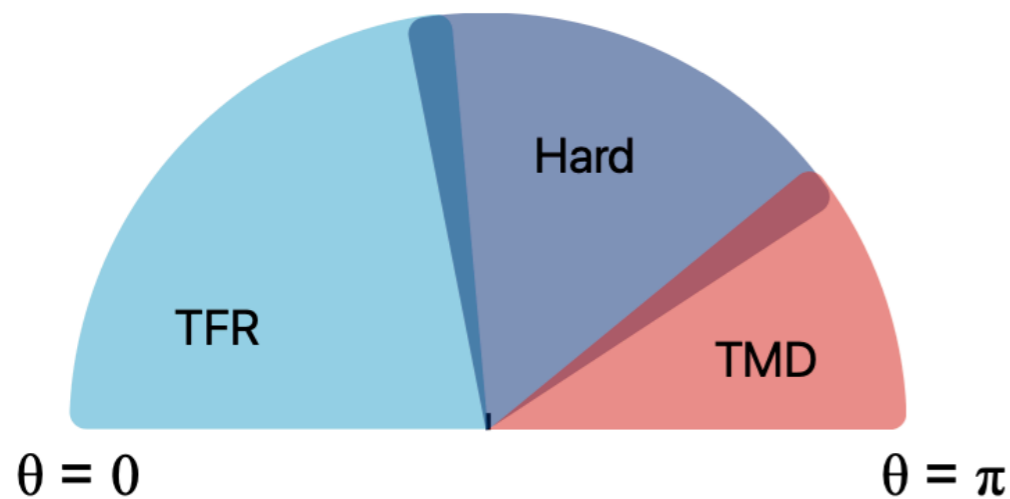
Hard: measures the perturbative behavior of QCD

TMD: measures perturbative and nonperturbative TMD physics

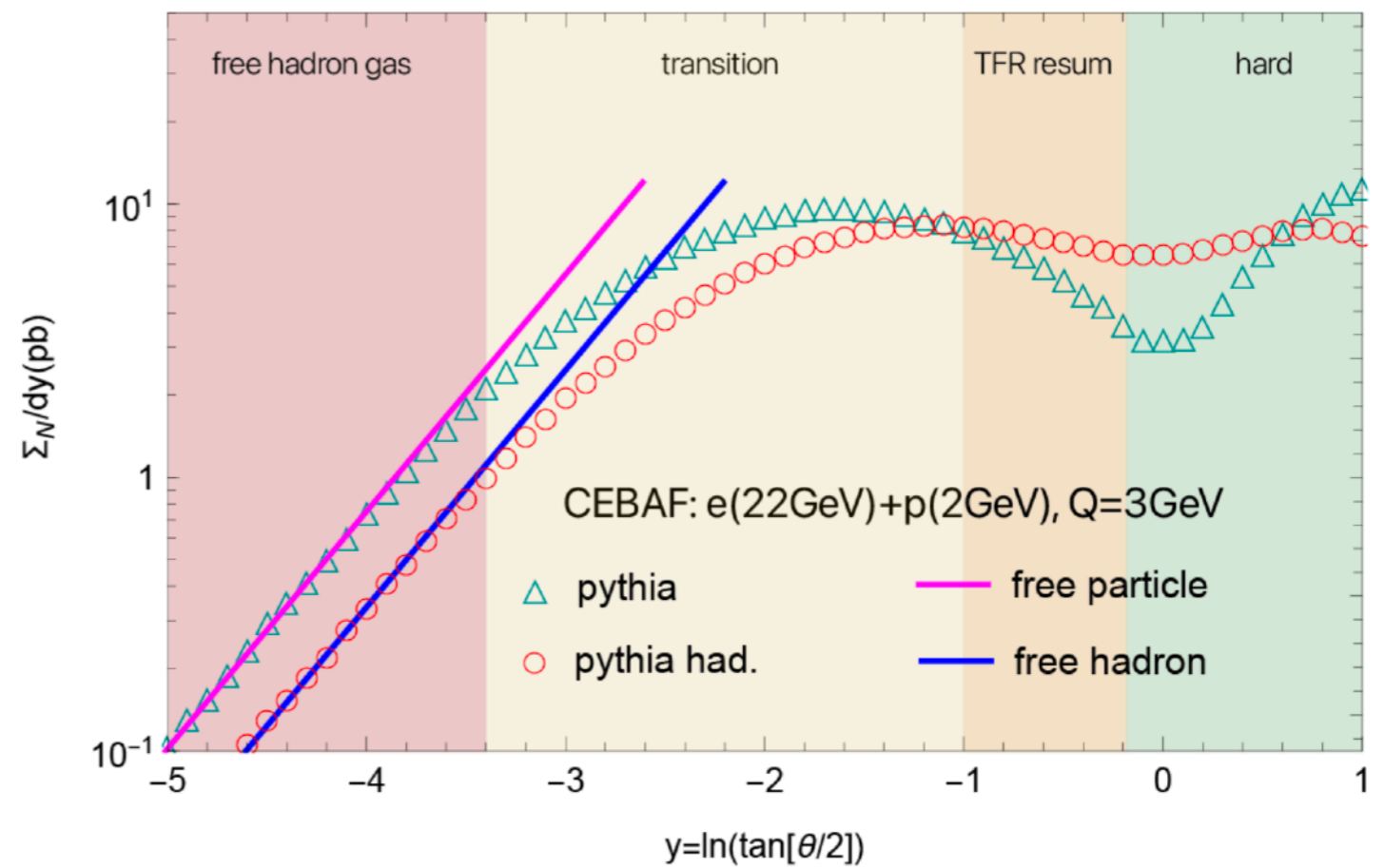
# Bjorken x weighted EEC

$$\text{EEC} = \frac{1}{\sigma} \sum_a \int d\sigma(\ell + h \rightarrow \ell + a + X) x_B^{N-1} \frac{P \cdot p_a}{P \cdot q} \delta(\cos \theta_{ap} - \cos \theta)$$

*NEEC, Liu, Zhu, arXiv:2209.02080; Cao, Liu, Zhu, arXiv:2303.01530.*



*Cao, HTL, Mi, arXiv:2312.07655*



TFR: the correlation of the energy flows from the initial nucleon.

Hard: measures the perturbative behavior of QCD

TMD: measures perturbative and nonperturbative TMD physics

# Conclusion

## Motivation

- Event shapes serve as a QCD laboratory, a tool for QCD study
- EEC/TEEC can be studied for various processes

## Observables

- TEEC and EEC in DIS

## Application

- investigate QCD in low and high energy limits
- test and study TMD factorization
- extract TMD PDFs and TMD FFs

# Thank you!