

Cameron Robbins Recent Artworks







'Anemograpgh Lux'
Ortenbourg Castle
Alsace France
Kinetic wind instrument
Long exposure photographs
Cameron Robbins 2023





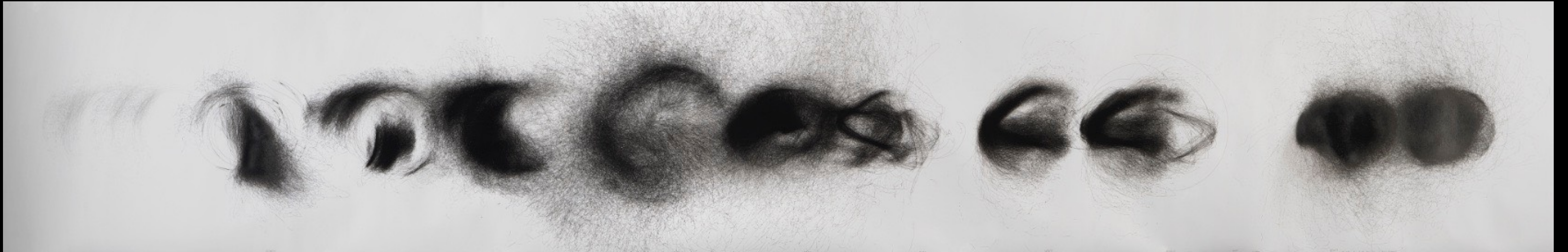
“Magnetic Anomaly “, MONA Tasmania, Cameron Robbins 2016 - bronze basalt magnets tungsten glass chromoly



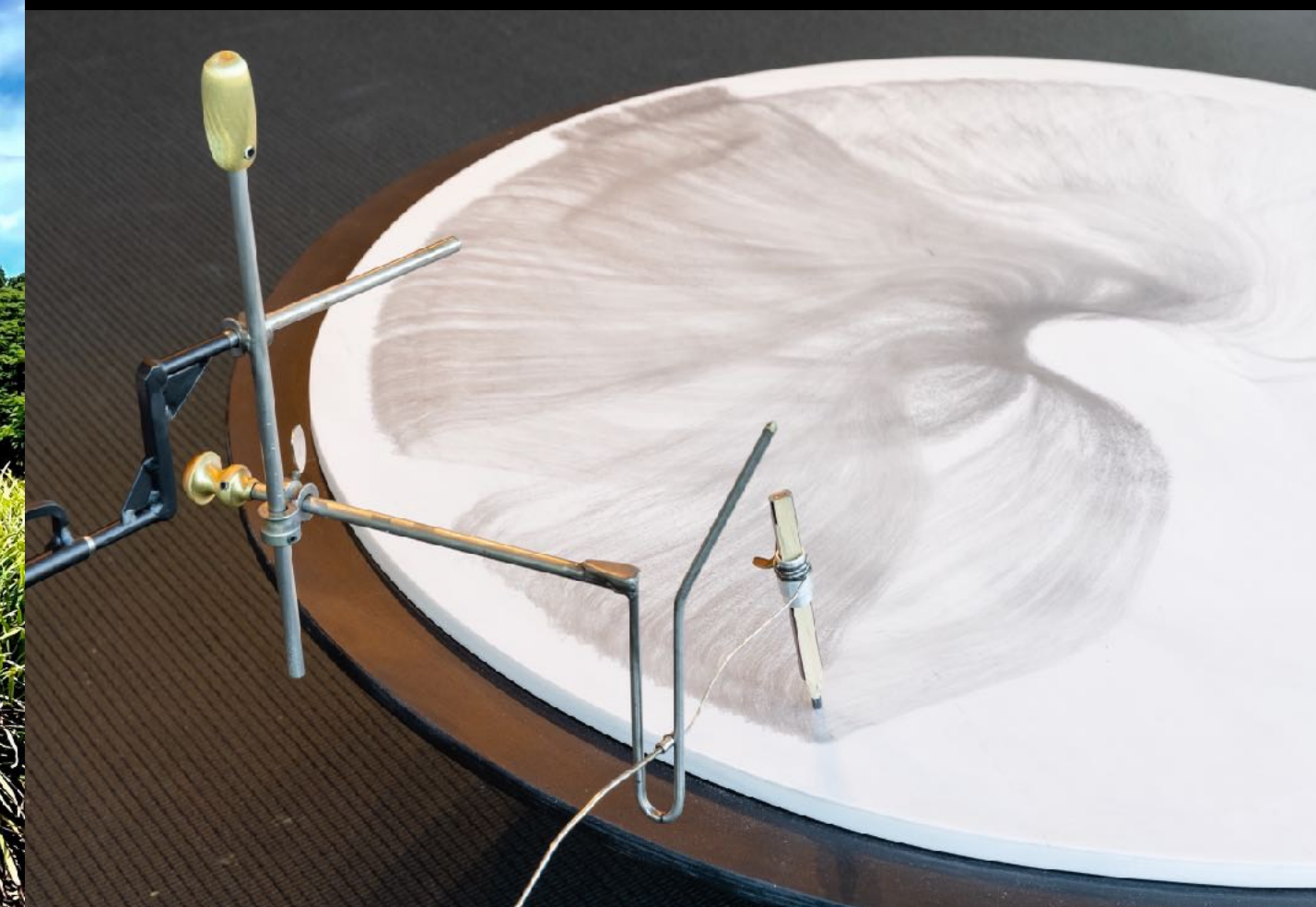
**Wind Analog at MCA Sydney , Loti Smorgon Sculpture Terrace 2021-23
This work going to Bundanon 2023**



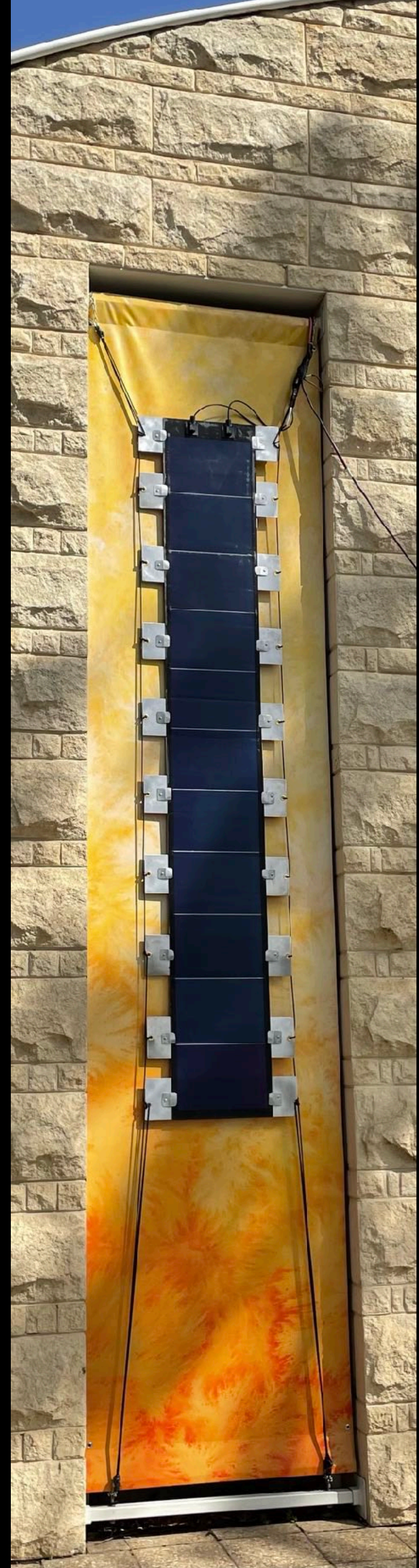
**Wind Section 2.0 at MONA Tasmania, 50 year wind drawing installation
Cameron Robbins 2017- 2067**



Wind Section 2.0 three 10 day wind drawings 450cm length ink on paper



Helio Ephemera, University of Queensland Art Gallery Cameron Robbins 2023
Solar drawing, graphite on marble



Solar Wall Drawing with Lunar Eclipse painting at Mornington Peninsula Regional Gallery 2021



**“Oenograf” CO2 drawing installation at The National MCA Sydney
Cameron Robbins 2021**



**“Falcon’ wind sculpture for ‘Goolamwin,’ WA,
9 metre average height stainless steel bronze composite fibre aluminium
Cameron Robbins 2022**

Brodie Ellis Recent Artworks



Brodie Ellis, Essays on Earth, 2023 ; 3 channel projection 4m x 18m CSF commission in collaboration with Sloan Lab, Monash Institute of Pharmaceutical Sciences



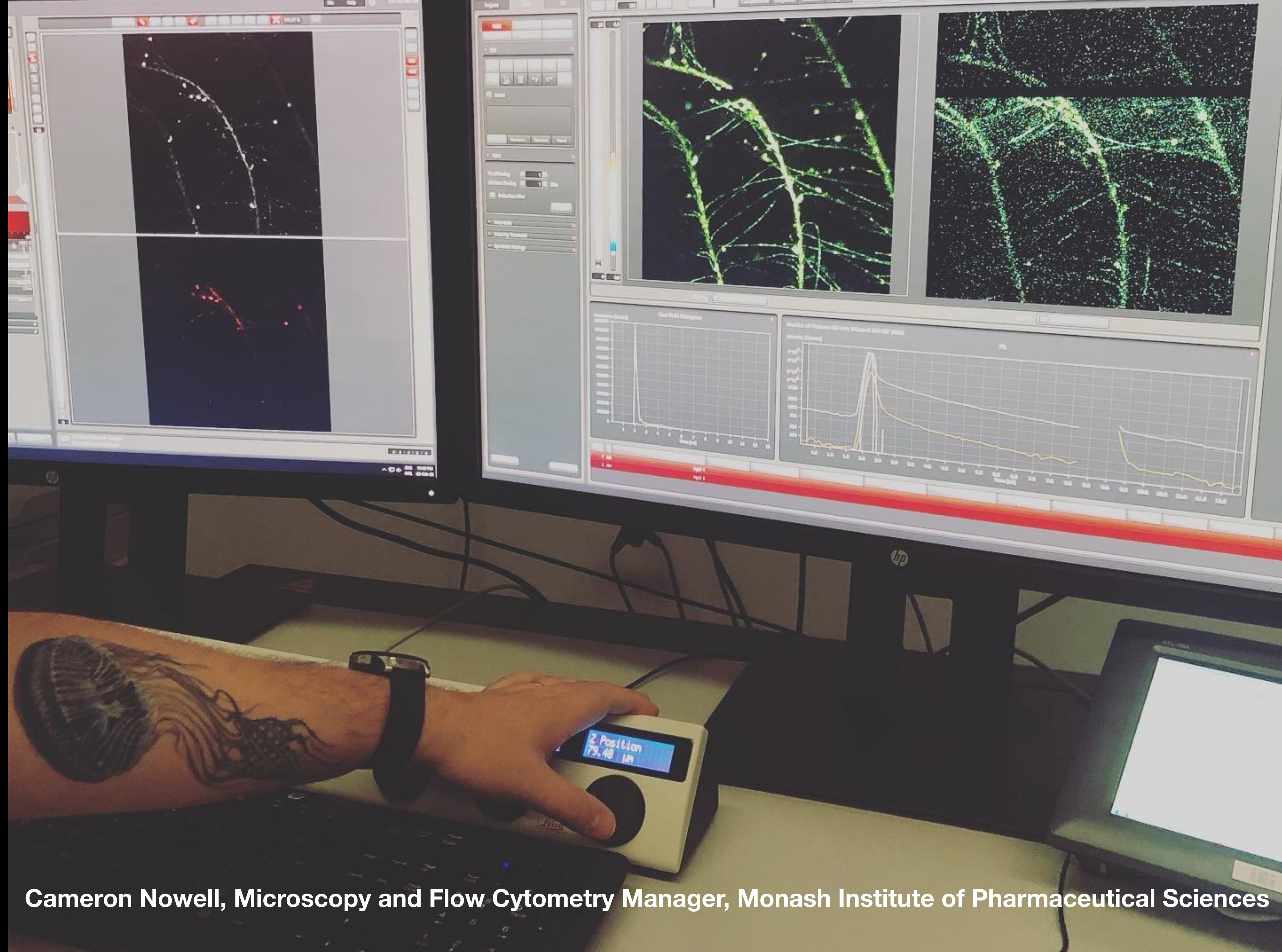
Brodie Ellis, *Essays on Earth*, 2023 ; 3 channel projection 4m x 18m CSF commission in collaboration with John Wolseley & Paul Kane



Brodie Ellis, Essays on Earth, 2023 ; 3 channel projection 4 x 18 metres CSF commission Created at Sloan Lab Monash University Melbourne



Sloan Lab, Monash Institute of Pharmaceutical Sciences, Melbourne



Cameron Nowell, Microscopy and Flow Cytometry Manager, Monash Institute of Pharmaceutical Sciences

Sloan Lab
Associate Professor Erica Sloan
Cameron Nowell
Drug Discovery Biology
Monash Institute of Pharmaceutical Sciences

<https://www.monash.edu/mips/themes/drug-discovery-biology/labs/cni>

TWITTER: @CNI_Lab



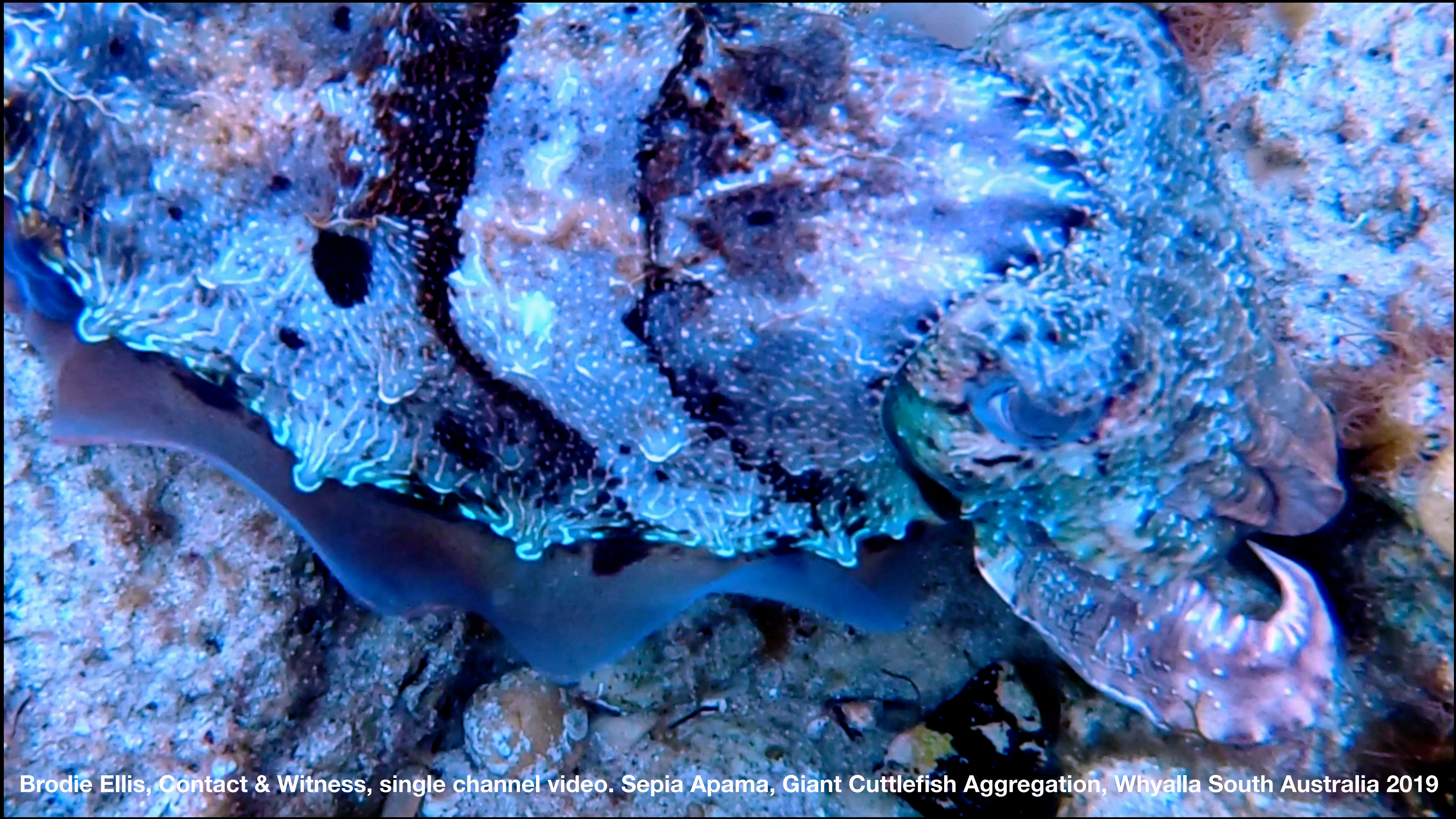
Brodie Ellis, Umbra Penumbra Antumbra, 2 channel projection, 10.4 surround sound installation; Sydney Biennale



Brodie Ellis, Umbra Penumbra Antumbra, 2 channel projection, 10.4 surround sound installation; Sydney Biennale



Brodie Ellis, Contact & Witness, single channel video. Sepia Apama, Giant Cuttlefish Aggregation, Whyalla South Australia 2019



Brodie Ellis, Contact & Witness, single channel video. Sepia Apama, Giant Cuttlefish Aggregation, Whyalla South Australia 2019

Brodie Ellis, Fallen Falcon Heavy, 7.5 metre mixed media sculpture; Linden New Art 2019



- Max Q3 is a sculpture that amalgamates nature and technology.
- The artwork is based on the form of a native Australian mistletoe (*Amyema Miquelii*). This is an indigenous medicinal plant with many healing properties.
- The sculpture is referencing our co-evolution with plants, and the phenomenon of bio-mimicry in technology. The stem of the plant becomes the massive jet trail of the rocket, seen at the top, as it reaches for the upper atmosphere.



Materials

- The cast bronze sculpture is patinated with a silver nitrate finish.
- The brass plinth is polished with a clear non slip coat to preserve the finish.
- People are encouraged to walk on the plinth and touch the sculpture.



Chengdu Nature Park (China) commission 2022; height 8 metres

cameronrobbins.com

cameronrobbins@me.com

Insta: @cameronrobbinsart

brodieellis.com

brodie.ellis@monash.edu

Insta: @brodieellisart