

# **FireBall-Triggered Vacuum BreakDown** **(FB BD)** **in Particle Accelerators**

Tetsuo ABE  
<tetsuo.abe@kek.jp>

High Energy Accelerator Research Organization (KEK), Japan

11<sup>th</sup> International Workshop on the Mechanisms of Vacuum Arcs (MeVArc 2024)

2024-03-06

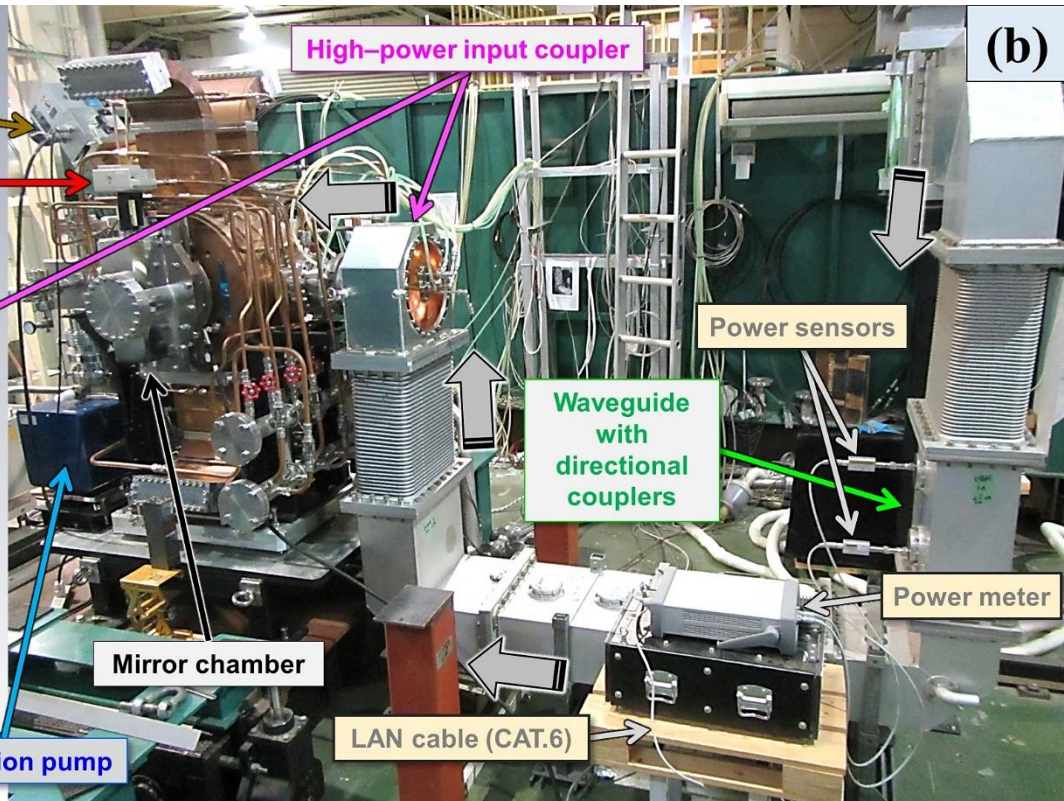
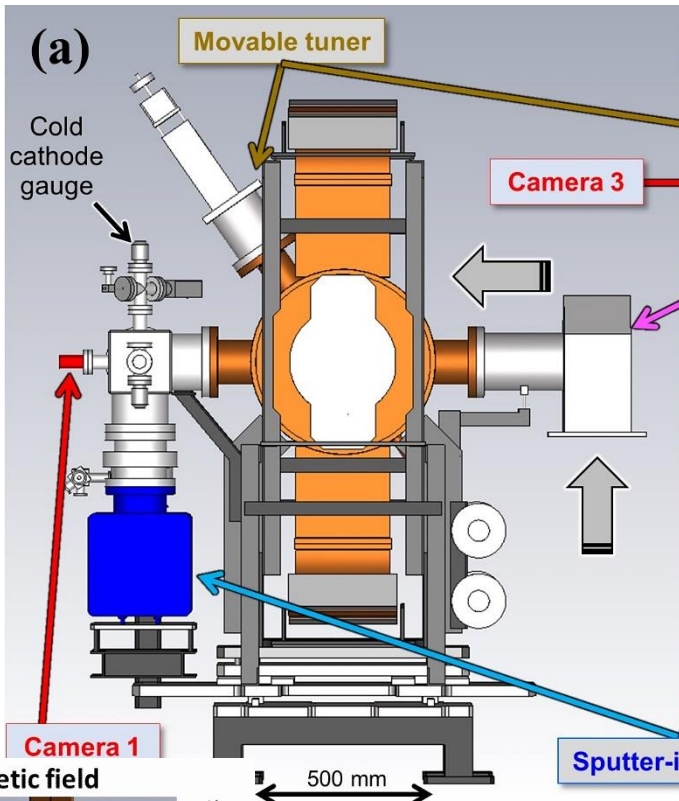
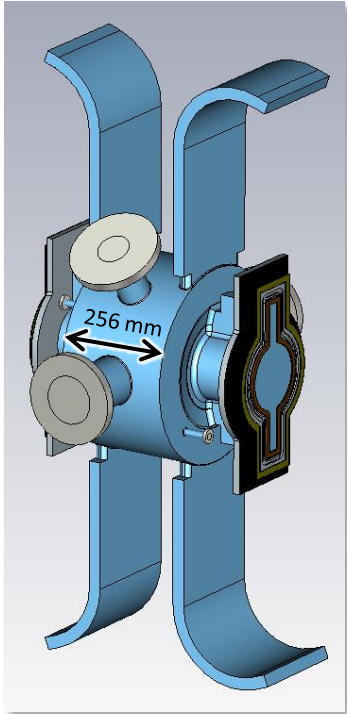
# FB BD discovered in High-Power Tests of 509 MHz (CW) RF Cavities

(FireBall BreakDown)

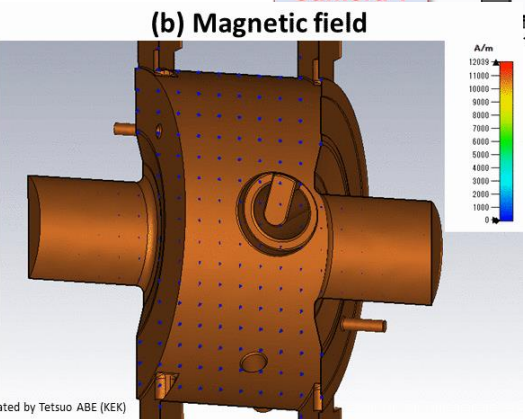
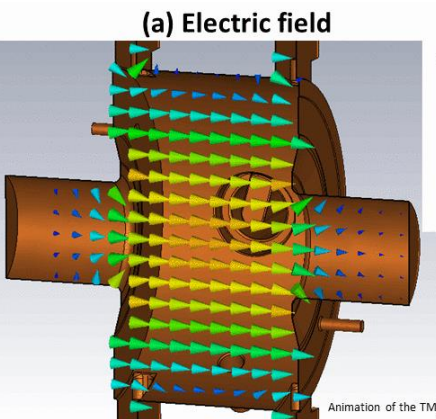
Vacuum region in the cavity

@ KEK / MR-D1-AT

Max. RF power input to the cavity: ~200 kW (CW)



↓ Excited electromagnetic field ↓



Animation of the TM<sub>010</sub> mode, created by Tetsuo ABE (KEK)

- Accel. mode: 509 MHz Continuous Wave (CW) TM<sub>010</sub>
- Made of Oxygen Free Copper (Class1)
- $Q_0 = \sim 30000$
- $R_{sh}/Q_0 = 150 \Omega$
- Spec.  $V_c = 0.8 \text{ MV} (\rightarrow E_{acc} = 3.1 \text{ MV/m})$
- Wall-loss power:  $\sim 150 \text{ kW} @ V_c = 0.80 \text{ MV}$
- Vacuum pressure:  $\sim 1e-5 \text{ Pa}$

For more details,  
<https://www2.kek.jp/accl/legacy/eng/topics/topics131007.html>

# Surface field at $V_c = 0.9$ MV (Input RF power: $\sim 200$ kW)

$$E_{max}^{(surf)} = 13 \text{ MV/m}$$

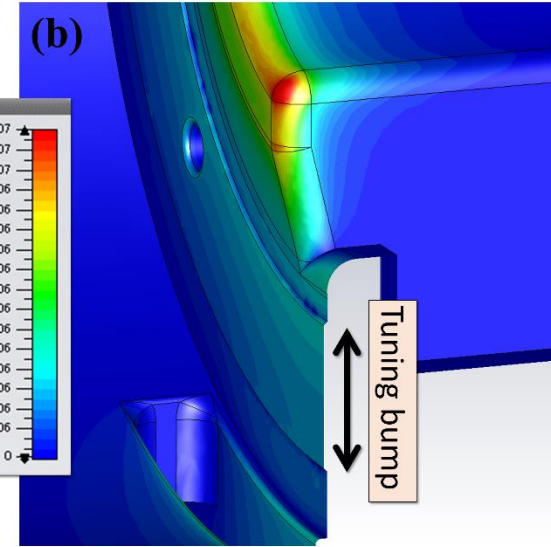
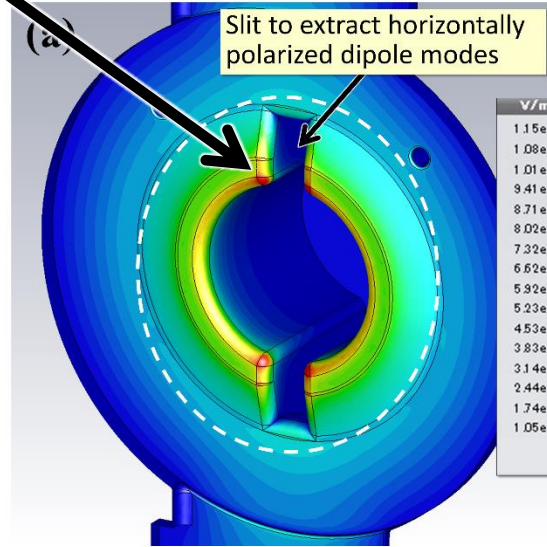
This max. surface E-field is much lower than in:

- Field evaporation ( $> \sim \text{GV/m}$ )
- X-band HG accel. structures ( $\sim 200 \text{ MV/m}$ )
- DC HV experiments ( $\sim 100 \text{ MV/m}$ )

➔ But breakdowns occur in UHF NC CW cavities.

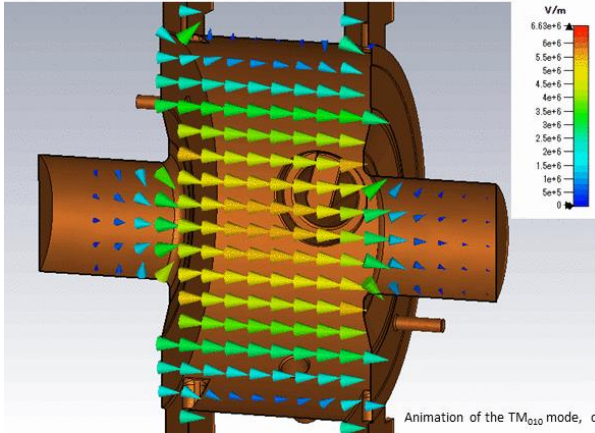
Upstream end plate

Downstream end plate

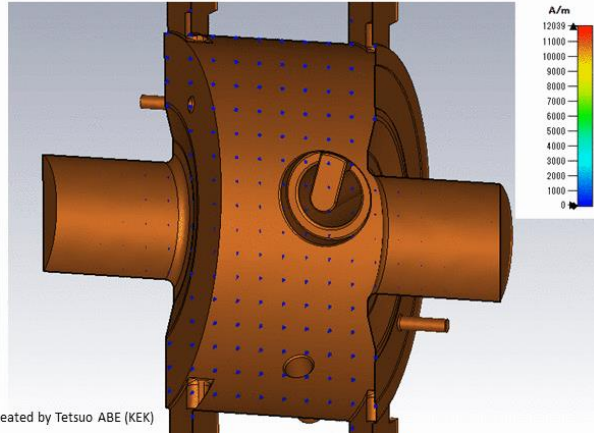


Electric field

(a) Electric field



(b) Magnetic field



Animation of the  $\text{TM}_{010}$  mode, created by Tetsuo ABE (KEK)

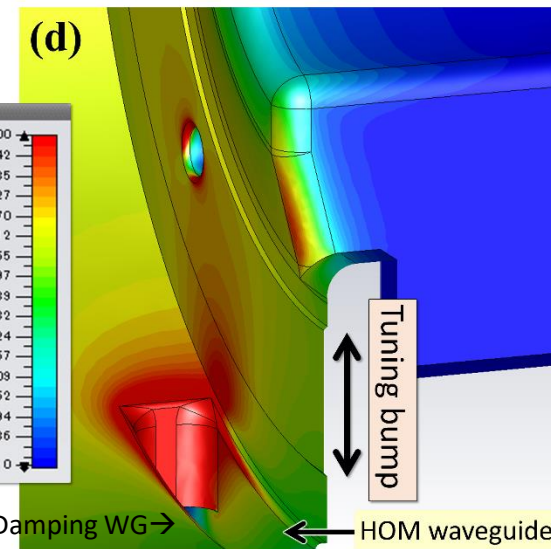
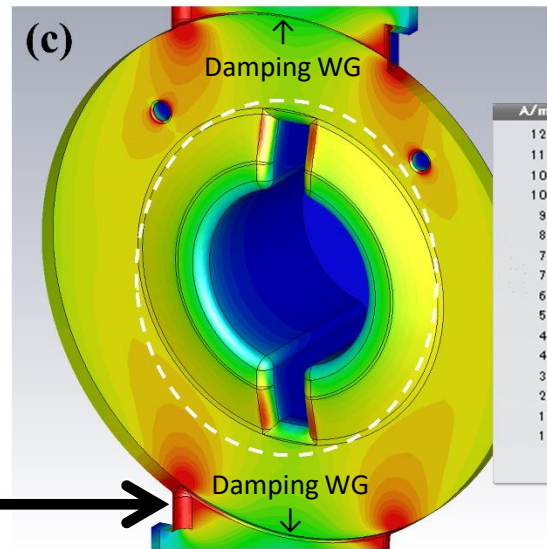
↑

↑

Upstream end plate

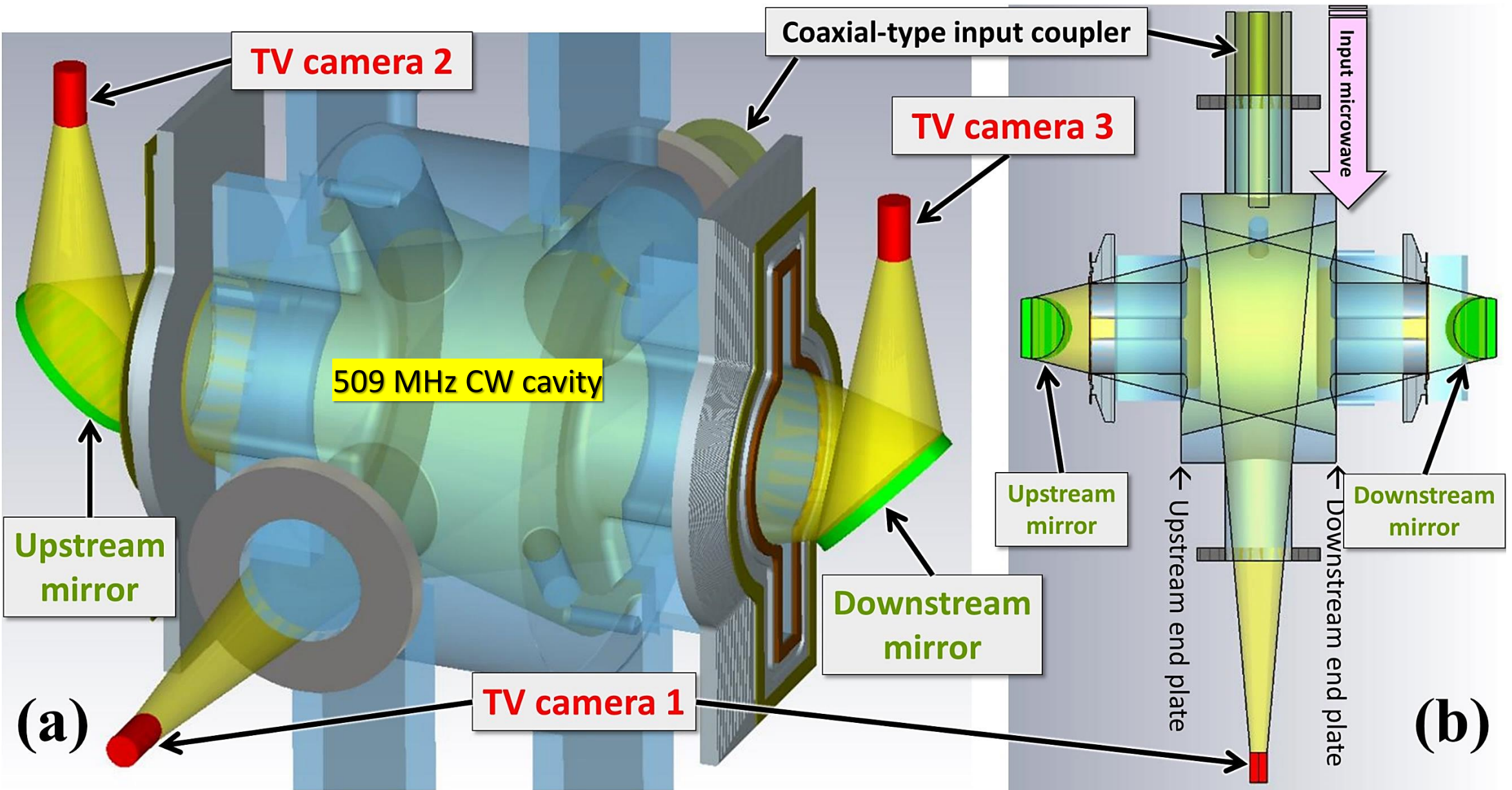
Downstream end plate

$$H_{max} = 34 \text{ kA/m}$$



Magnetic field

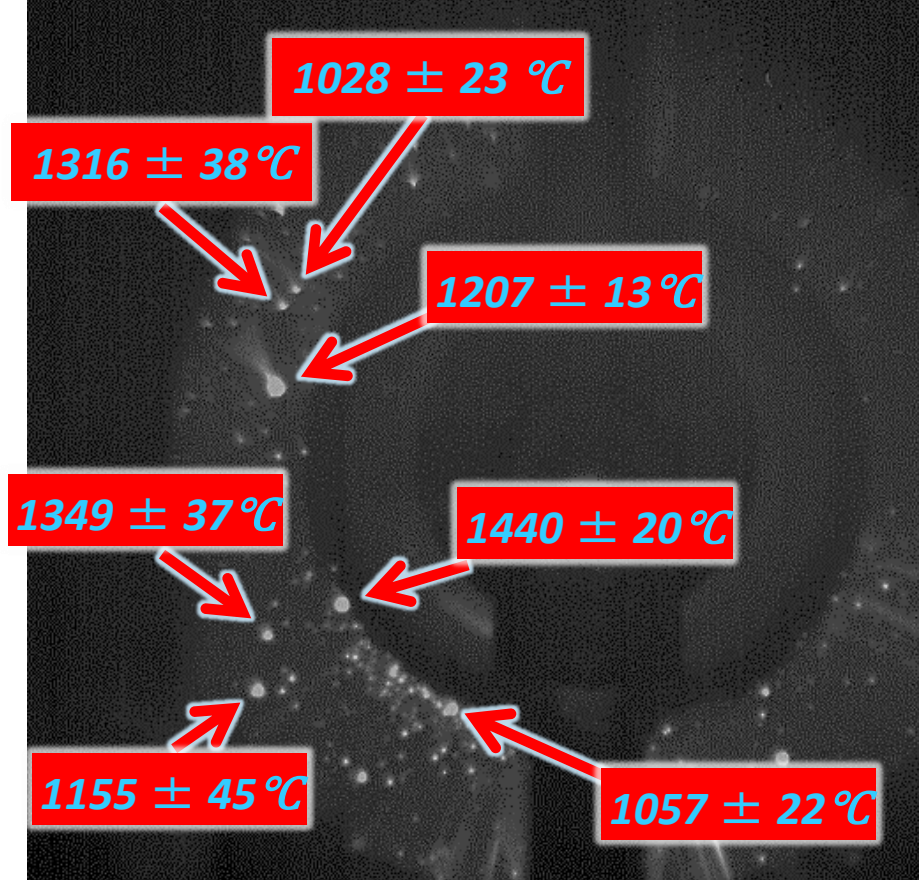
# Multi-directional and wide-field observation with **Three Cameras**



# Observation1: "Adherent" fireballs

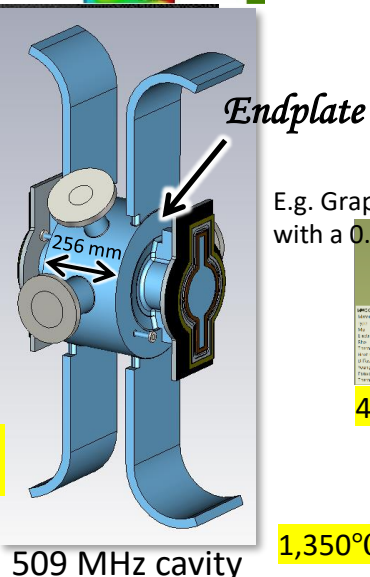
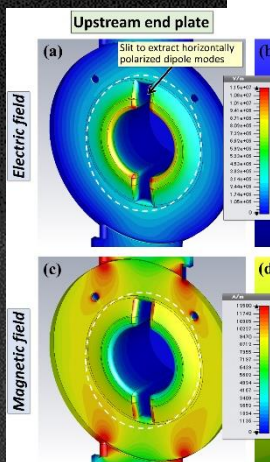
During high-power operation with  $V_c = 0.95$  MV ( $E_{acc} = 3.7$  MV/m)

Bright spots observed on the endplate are high-temperature ( $> 1,000^\circ\text{C}$ ) micro-particles ( $< 0.1$  mm)

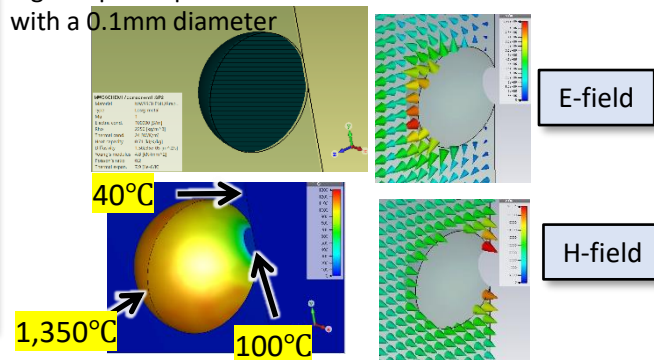


Emitting significant lights for a long time ( $> \text{day}$ )

Observation of the emission spectra using a spectrum camera  
 → After various corrections, the temperatures were estimated.



E.g. Graphite sphere <Guess> with a 0.1mm diameter



A stable fireball adhering to a copper surface can explode, leading RF-cavity breakdown

Then, disappeared in the following high-power operation.

One of the bright spots

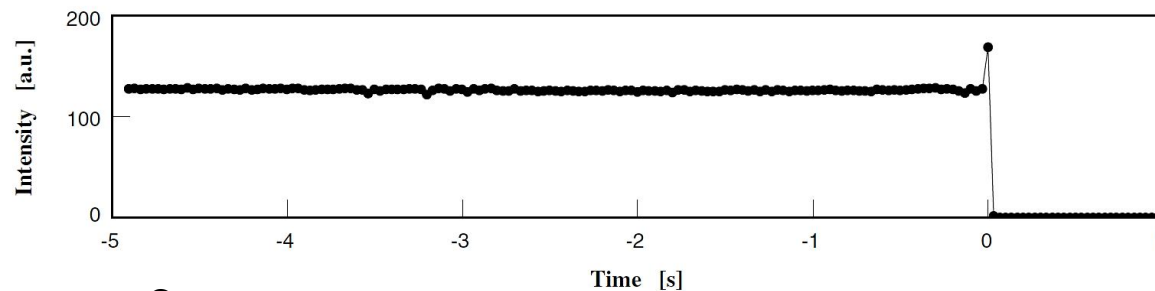
suddenly exploded at the moment of breakdown.



(a) 1 frame (1/30 s) before this cavity breakdown.

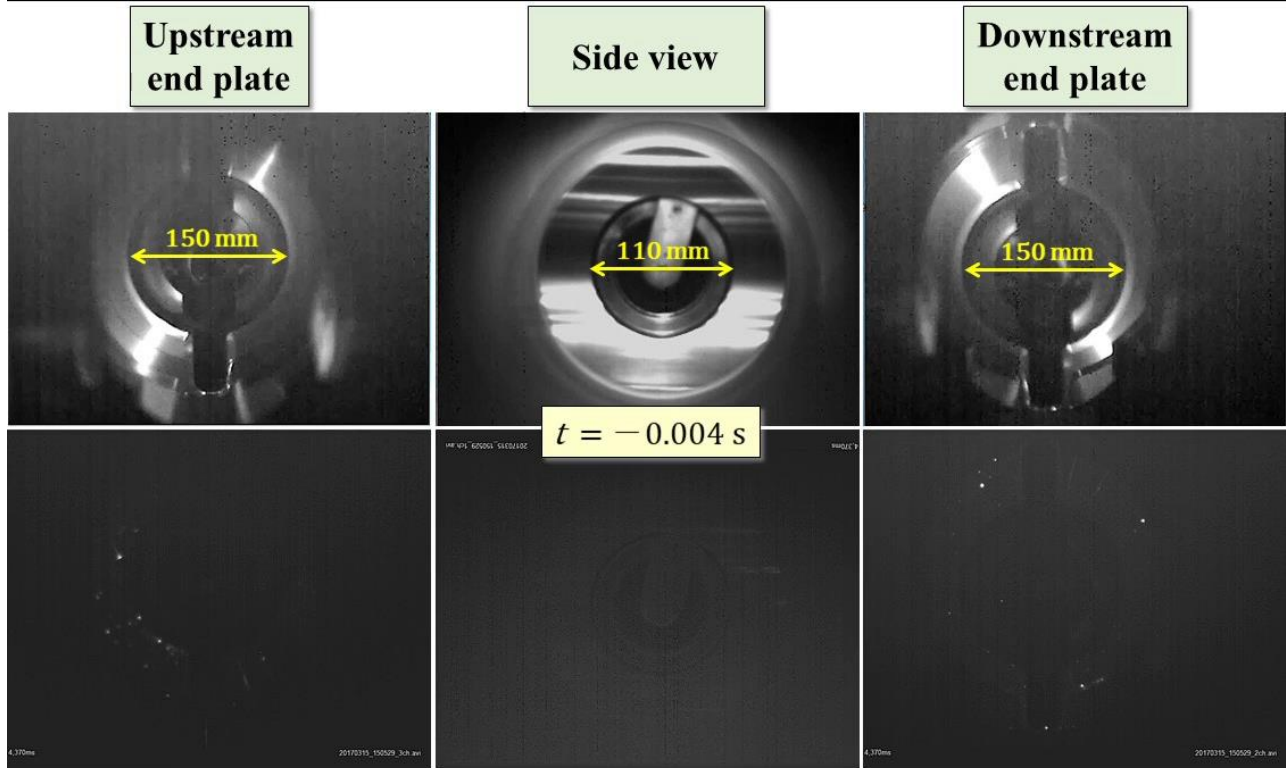
(b) At the moment of this cavity breakdown.

(c) Shortly after recovering from this cavity breakdown at  $V_c = 0.95$  MV.



# Observation2: "Flying" fireballs

Three high-speed cameras used for multi-directional observation during HP operation of 509MHz (CW) NC cavity at  $V_c = 0.88$  MV

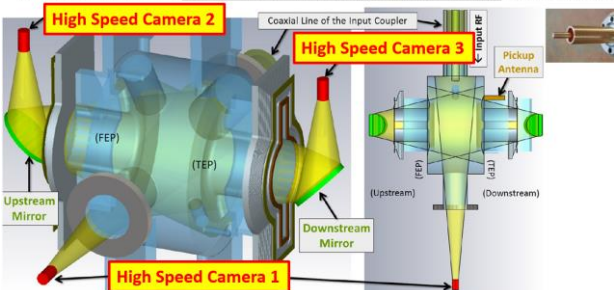


509 MHz cavity with a cavity gap voltage: 0.88 MV (= accelerating gradient: 3.4 MV/m)

Recorded by Tetsuo ABE (KEK)

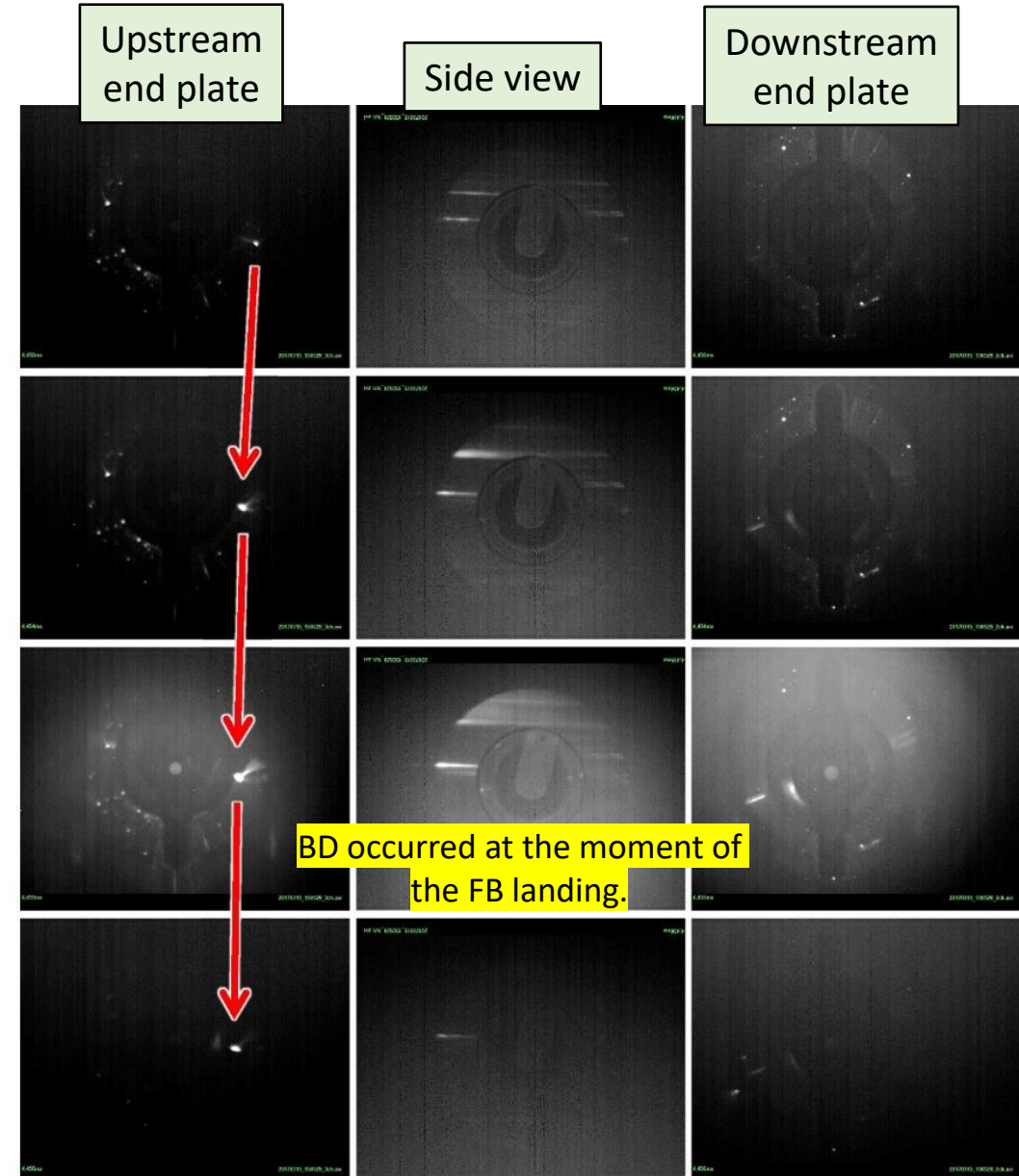
3 TV cameras for Multi-directional and wide-field observation

This video → <https://youtu.be/VZe8dVLqWHO>



Because the high speed cameras are not sensitive to infrared, the flying bright spot should be a fireball with  $> 1,000^\circ\text{C}$  if the size is small ( $\lesssim 0.1\text{mm}$ ).

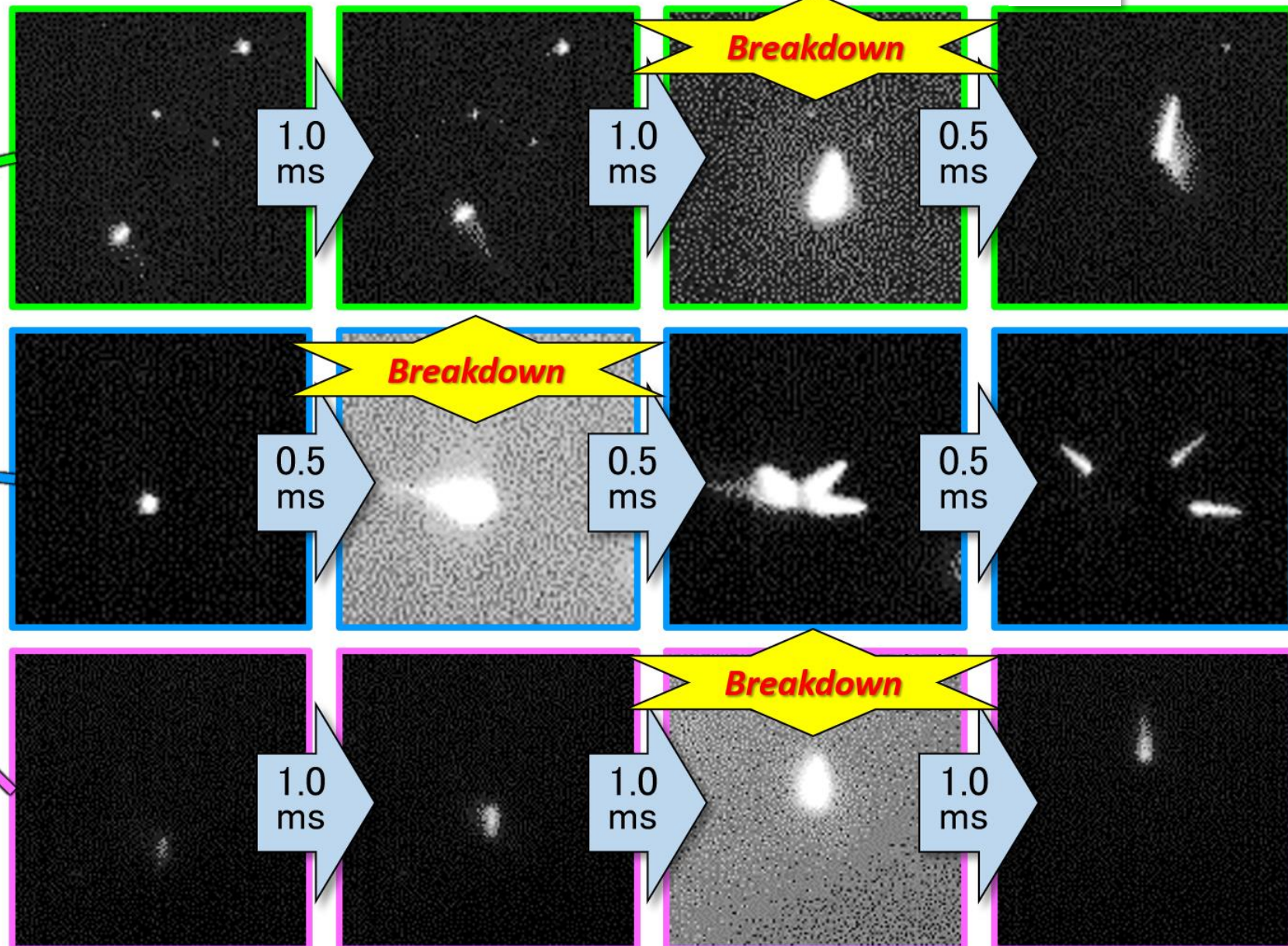
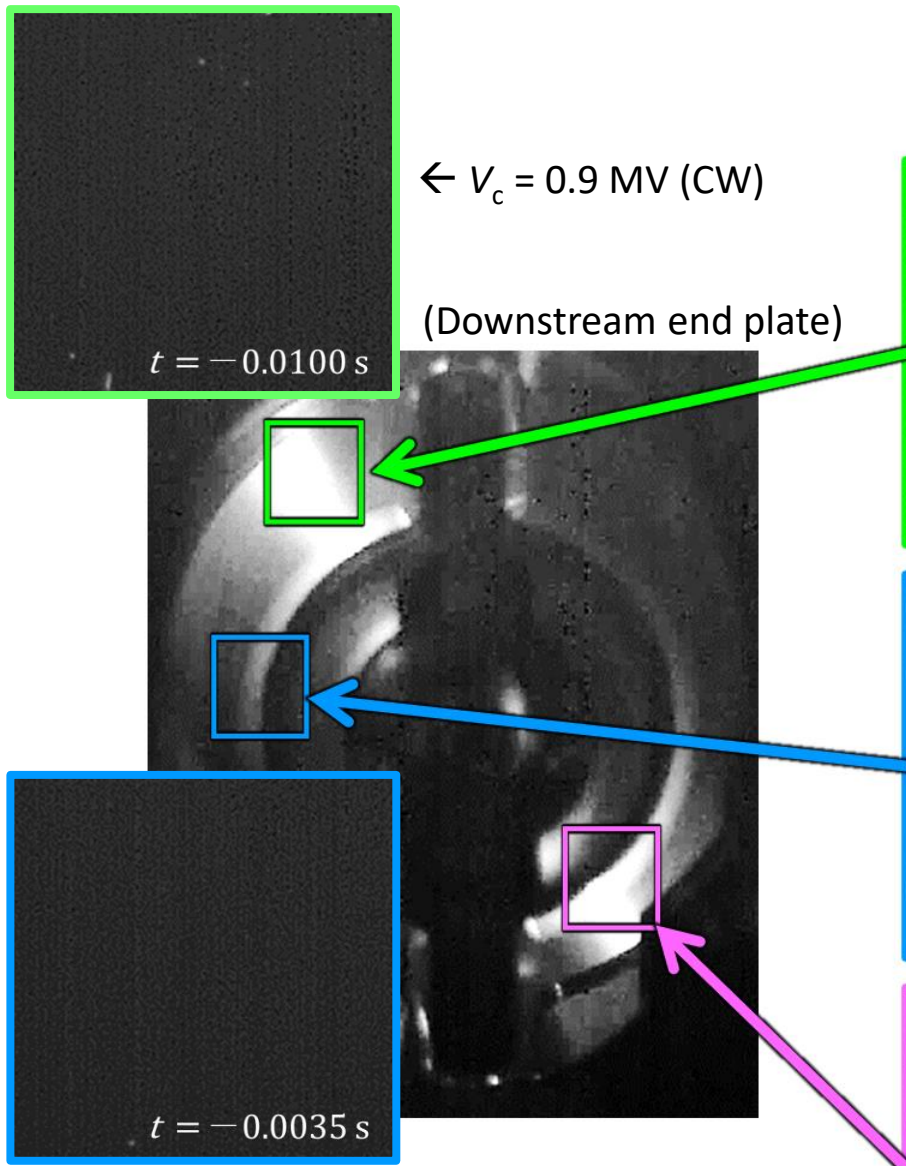
(g) Frame No. 4450  
 ↓ 1 ms  
 ↓ (h) Frame No. 4454  
 ↓ 1 ms  
 ↓ (i) Frame No. 4455  
 ↓ 1 ms  
 ↓ (j) Frame No. 4456



BD occurred at the moment of the FB landing.

# Other flying fireballs

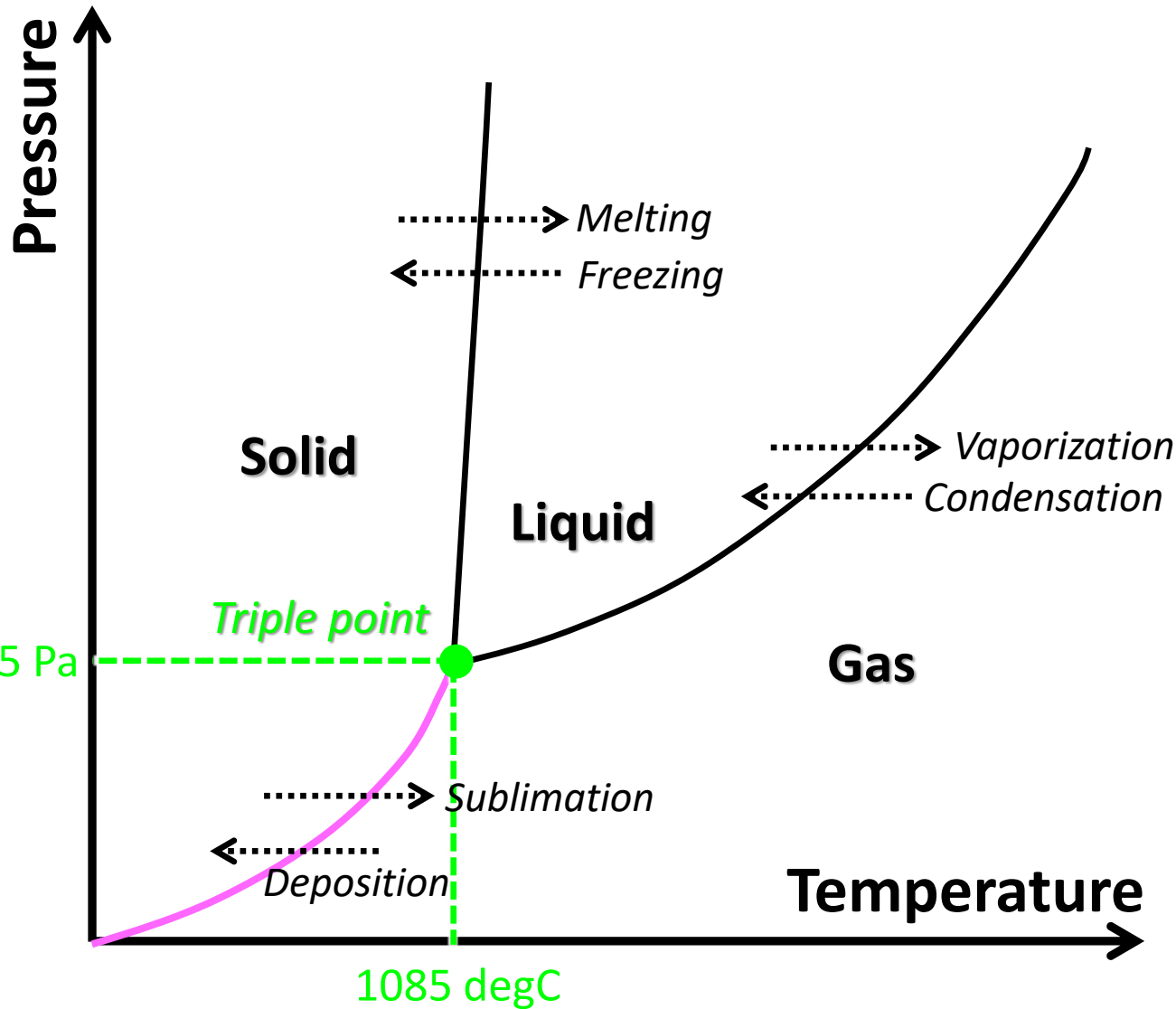
<https://youtu.be/MqFYk4EVr7w>



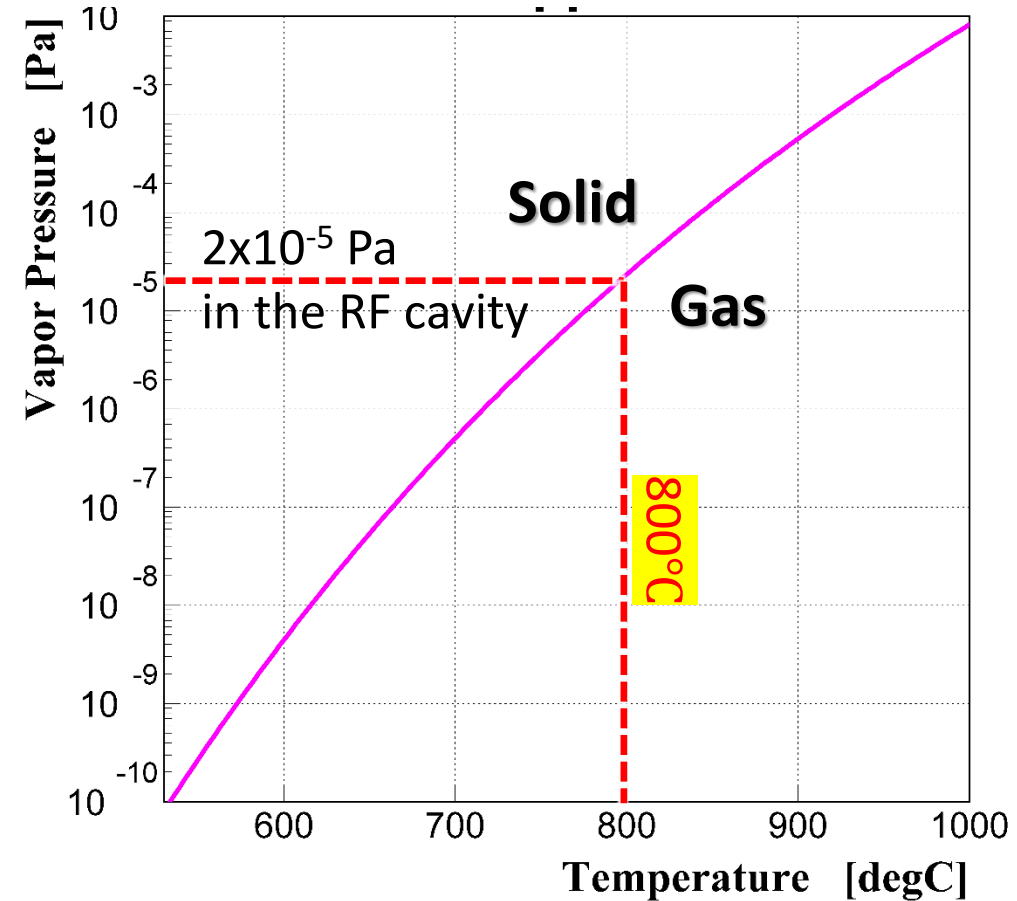
**What is the fireball made of?**



# Phase Diagram of Copper



(Data from [https://www.iap.tuwien.ac.at/www/surface/vapor\\_pressure](https://www.iap.tuwien.ac.at/www/surface/vapor_pressure))



- ✓ Temperatures of copper surfaces exposed to ultrahigh vacuum cannot be higher than 1,000°C.
- ✓ Adherent fireballs can emit significant light for > day.

➔ The fireball material is not copper!

# Candidates of the Fireball Materials

Should have a Sublimation point  $> 1,000^{\circ}\text{C}$  in ultrahigh vacuum.

Element	Sublimation point [ $^{\circ}\text{C}$ ] @ $2 \times 10^{-5}$ Pa	Remarks
W	2258.6	Materials of the SuperKEKB collimator heads
Ta	2123.4	
C (Graphite)	1769.9	Heater materials of vacuum furnaces for RF-cavity fabrication
Mo	1705.7	
Zr	1565.7	Material of NEG pump strips (e.g. St707)
Ti	1162.6	Material of the KEKB collimator heads
Au	894.7	
Cu	795.3	Material of normal-conducting RF cavities
Al	765.0	No chance of leading to fireball breakdown in RF cavities made of Cu
Be	764.2	
Ag	635.3	
In	541.0	

Data from [https://www.iap.tuwien.ac.at/www/surface/vapor\\_pressure](https://www.iap.tuwien.ac.at/www/surface/vapor_pressure)

# Physics in Fireball Breakdown

# Breakdown observable A: Fast drop of the accelerating field

Decay time:

- Normal RF-switch OFF → Decay time:  $8 \mu\text{s}$
- Fireball breakdown → Decay time:  $< \sim 500 \text{ ns}$

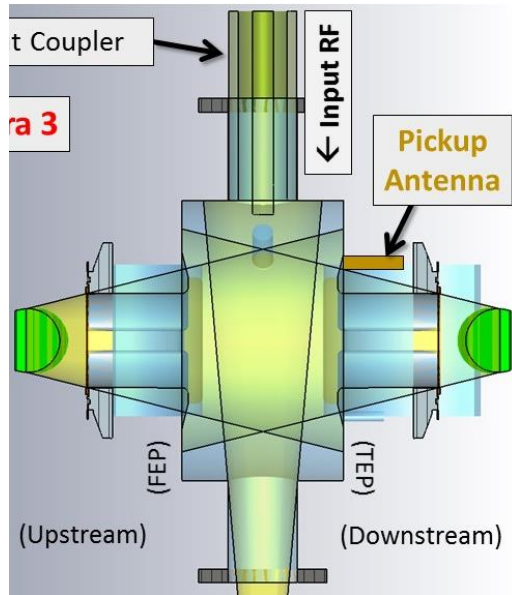
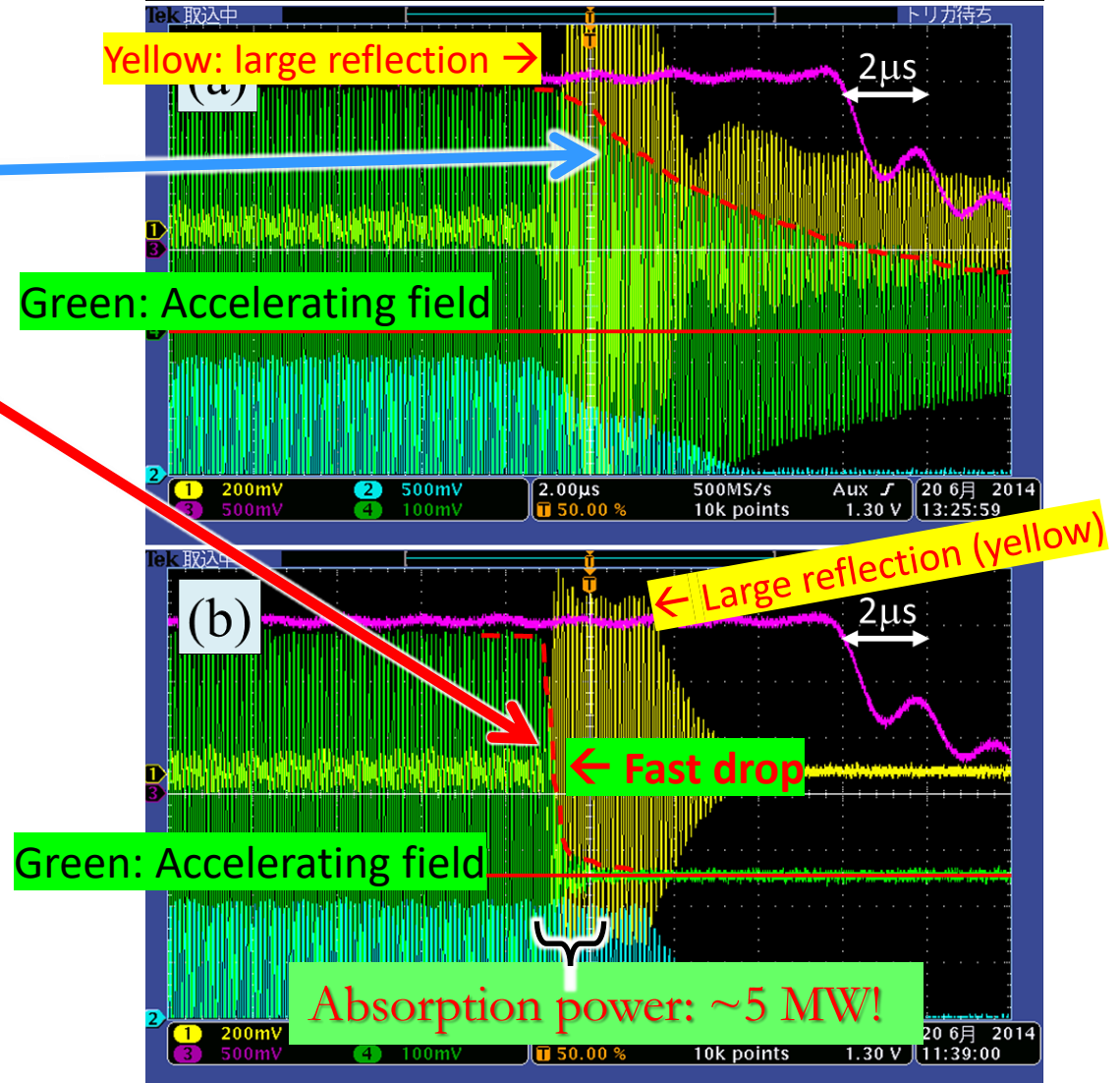


FIG. 6: Waveforms of the oscilloscope displayed for a time span of  $20 \mu\text{s}$  ( $= 2 \mu\text{s}/\text{div}$ ) when the interlock system was activated. The red dashed curves indicate the envelope of the 508.9-MHz pickup signal from DR Cavity No. 2, and the red solid lines indicate its zero level. (a) The RF switch was turned off for a reason related to the klystron. (b) Example of the cavity breakdown events.

$Q_L = 13000 @ 509 \text{ MHz} \Rightarrow \text{Fill time: } 8 \mu\text{s}$

Ch.1: Reflected Wave from the Cavity Ch.2: Input Wave to the Cavity  
Ch.3: Control Voltage (Modulator) Ch.4: Pickup Wave from the Cavity



If this power is absorbed in  $< 0.1 \text{ mm}^2$

$\rightarrow > \sim \text{GW}/\text{cm}^2$

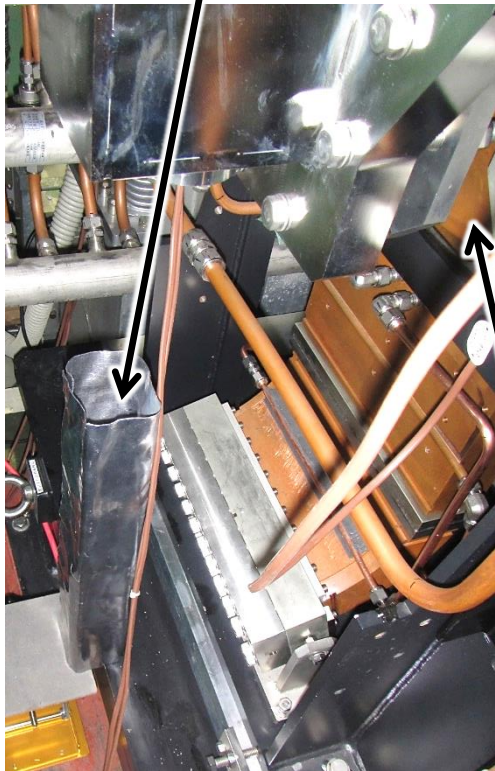
# Breakdown Observable B: Current flash



Field emitted  $e^-$   
→ Impact on the metal surface  
→ X-ray radiation

## X-ray detector

(plastic scintillator + PMT)

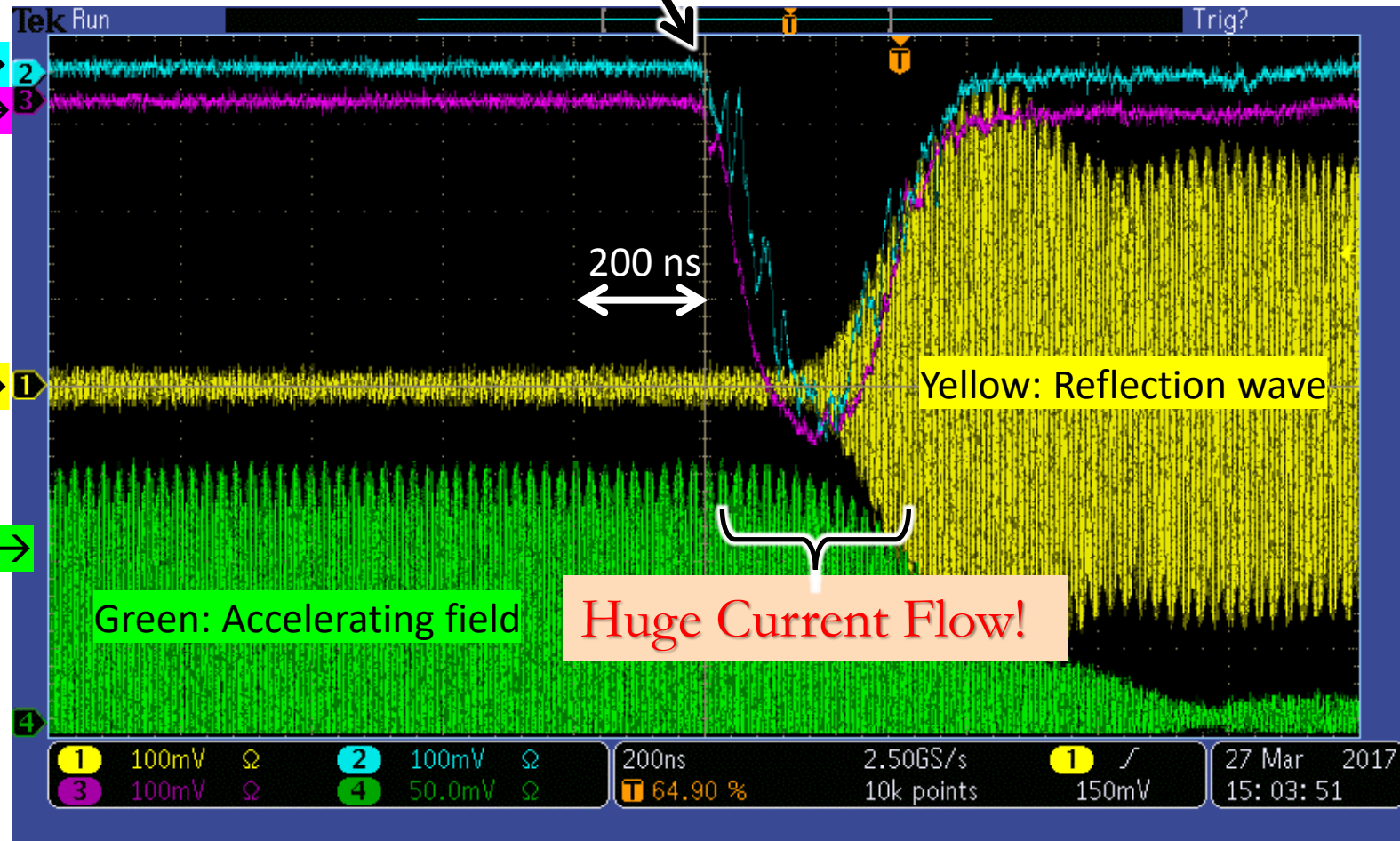


RF cavity  
for the  $e^+$  DR

Ch.2 : X-ray (UP) →  
Ch.3 : X-ray (DN) →

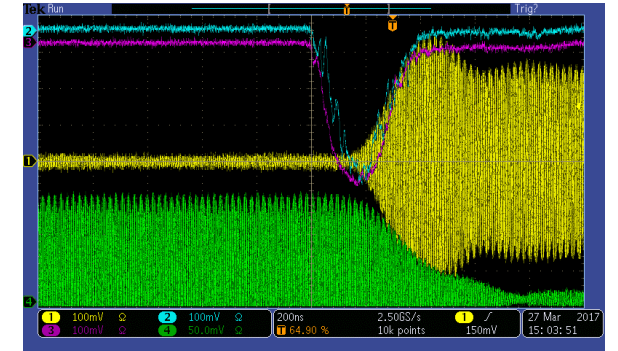
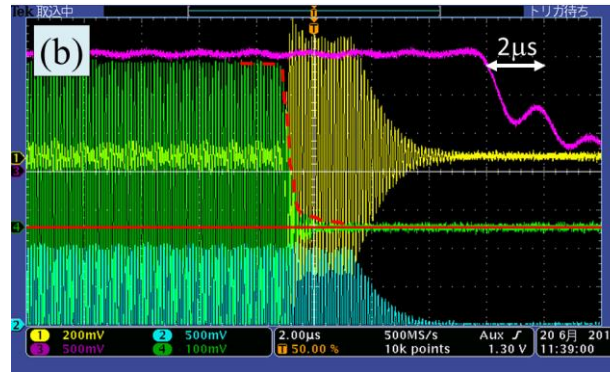
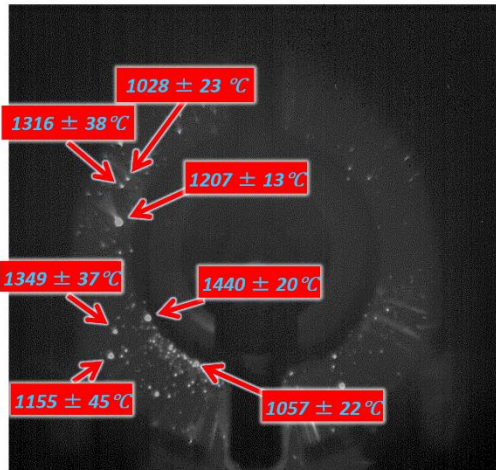
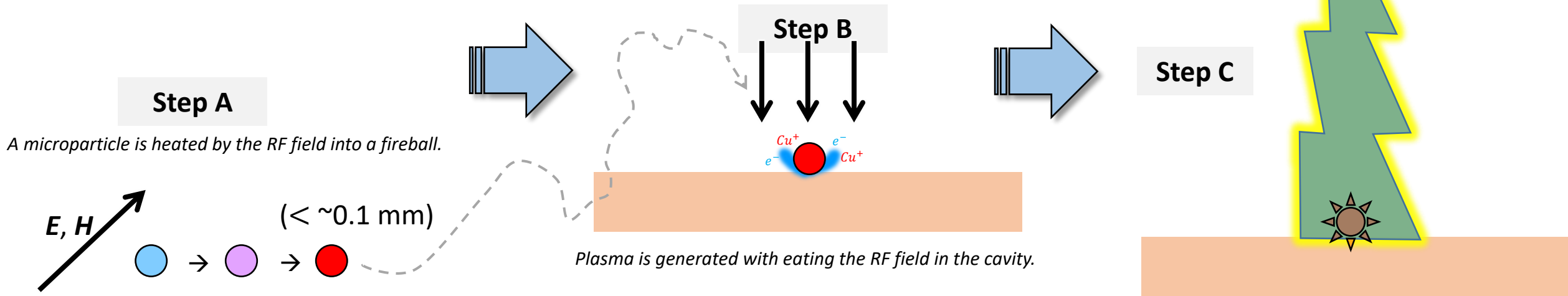
Ch.1 : Cav. Refl. →

Ch.4 : Cav. Pickup →



(During the high-power test of the RF cavity for the DR)

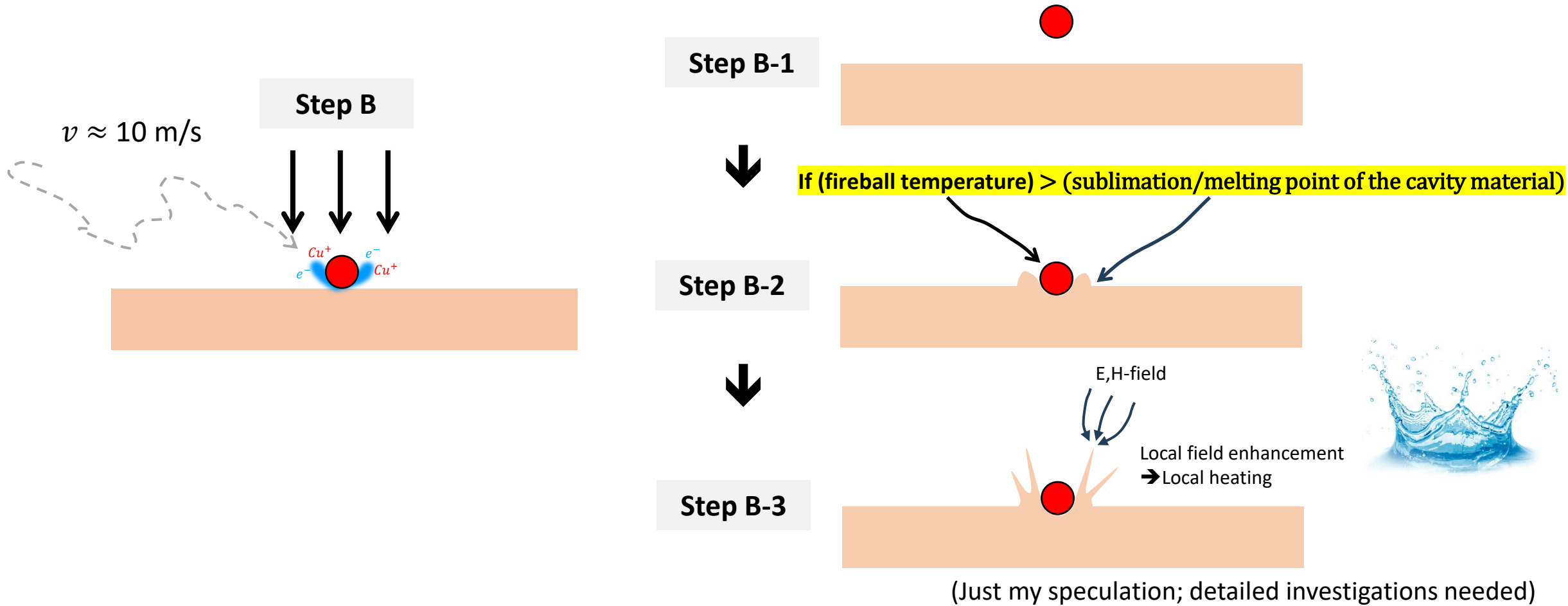
# Physical process of FB BD revealed by the observations



(Plasma generation and its exponential growth are needed for vacuum breakdown.)

# Essential Condition for FB BD

**Coexistence of different materials  
with largely different sublimation/melting points in the same place**



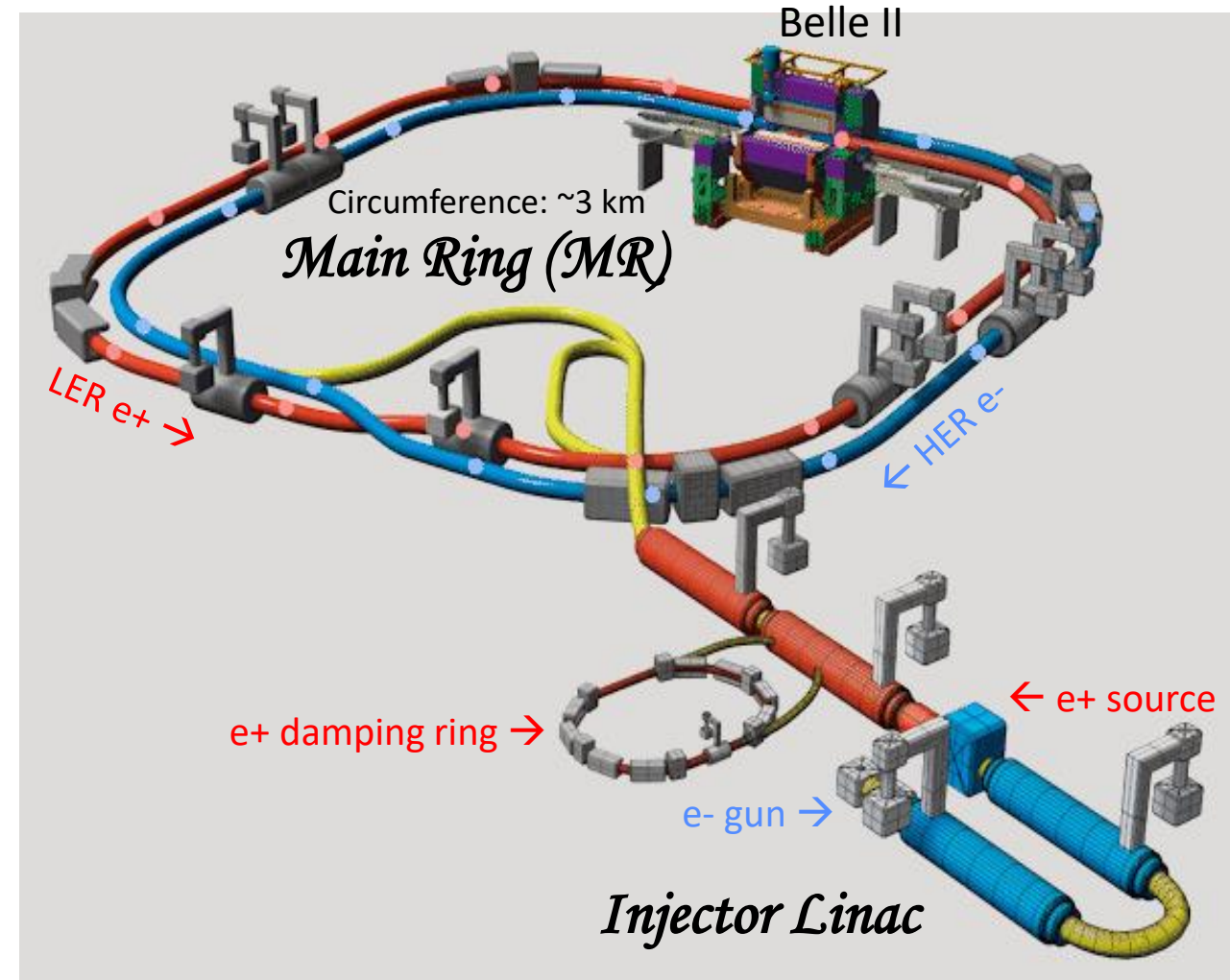
**Unexpected relationship with  
the beam operation of  
SuperKEKB accelerator**



# SuperKEKB Accelerator

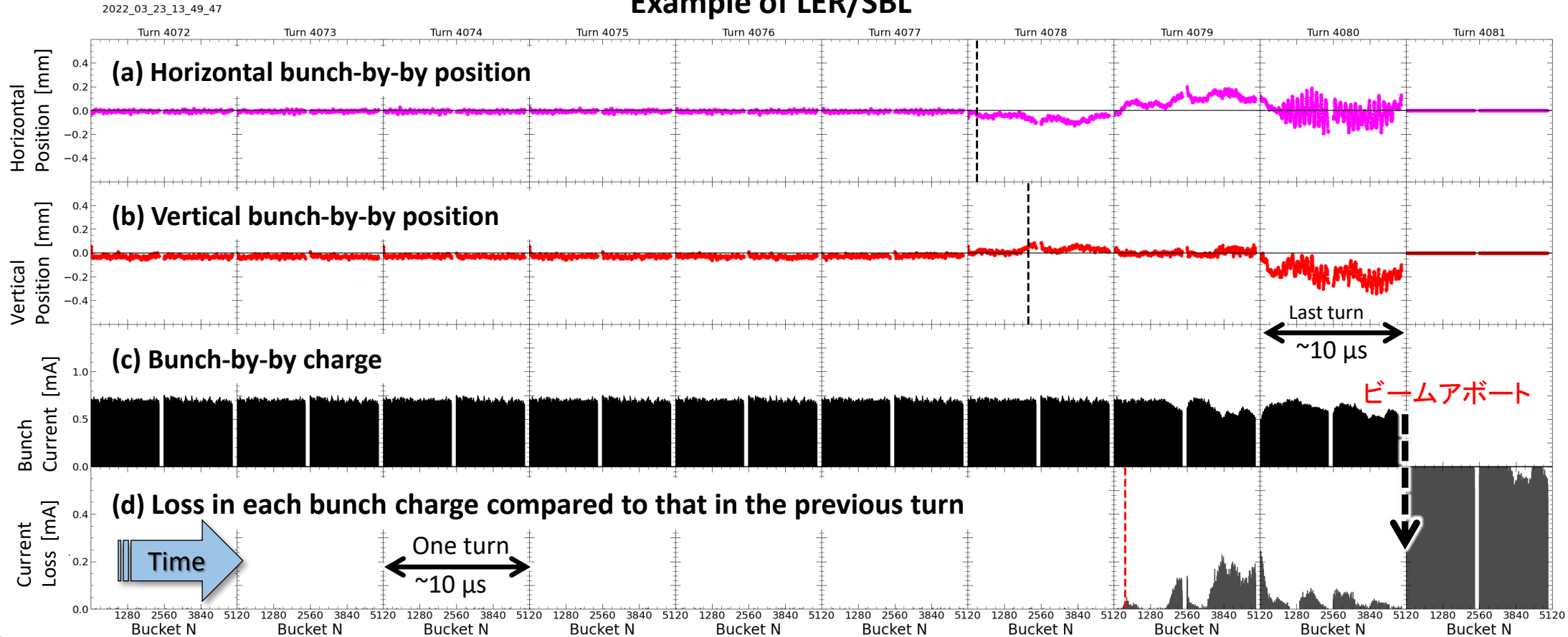
~ Asymmetric-energy  $e^+e^-$  double-ring collider ~

- Upgraded from KEKB B-factory (KEKB)
- Stored-beam energies
  - **High Energy Ring (HER)** : 7.0 GeV ( $e^-$ )
  - **Low Energy Ring (LER)** : 4.0 GeV ( $e^+$ )
- $E_{\text{cms}} \approx M_{Y(4S)}$
- Stored-beam currents (design)
  - HER : 2.6 A
  - LER : 3.6 A
- Positron damping ring newly constructed
- Final target luminosity:  $6.0 \times 10^{35} \text{ cm}^{-2} \cdot \text{s}^{-1}$ 
  - Higher beam currents than those at KEKB
  - Squeezing  $\beta_y^*$  with the nano-beam collision scheme
- Goal: 50-fold more integrated luminosity than recorded in KEKB
- To increase the luminosity in the future, we **need to increase the stored beam currents** in addition to squeezing  $\beta_y^*$



# What's Sudden Beam Loss (SBL)?

## Example of LER/SBL

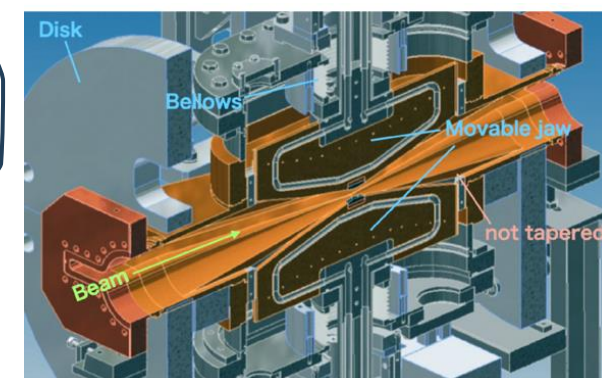


## Characteristics

- A) Beam bunches are suddenly kicked in the transverse direction, leading to significant beam losses.
- B) Fast phenomena of the order of  $\sim 10\mu\text{s}$
- C) No change in the size or energy of the beam bunches
- D) Observed not only in LER ( $e^+$ ) but also in HER ( $e^-$ ) (The bunch-charge loss patterns different between the two)
- E) Not observed before SuperKEKB / Phase 2
- F) Largely depends on the bunch current (not total current)

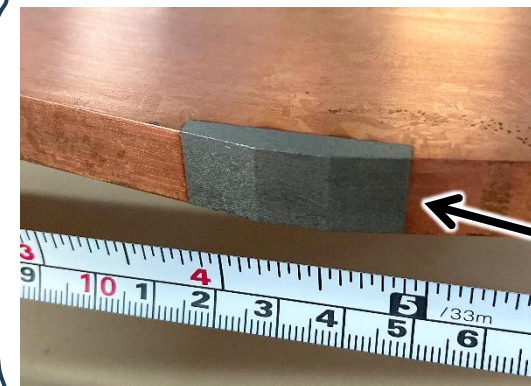
# Example of serious hardware damages due to SBL

LER / vertical beam collimator "D02V1" just upstream of the IR

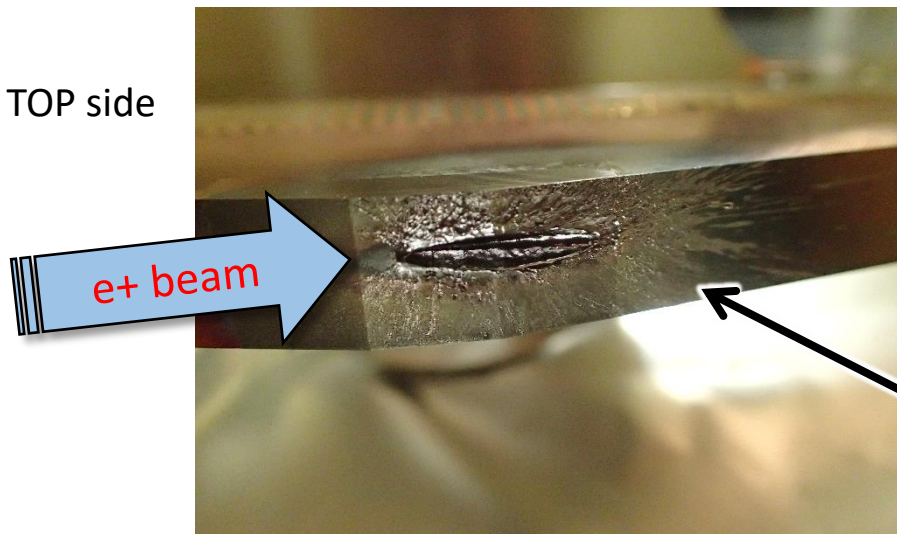


[Phys. Rev. Accel. Beams 23, 053501 \(2020\)](#)

Cf. An undamaged head (W)

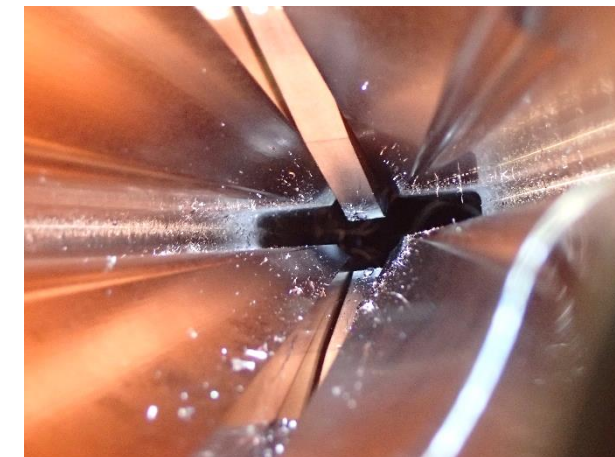


TOP side



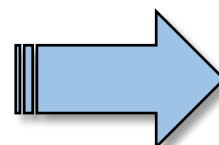
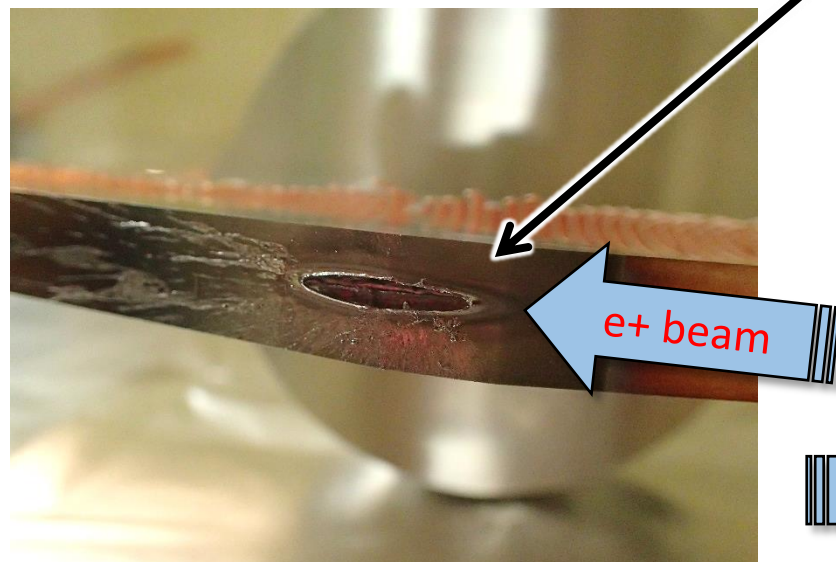
Damaged heads (Ta)

A lot of rubble of the Ta heads strewn



(Photos courtesy of Shinji TERUI)

Bottom side



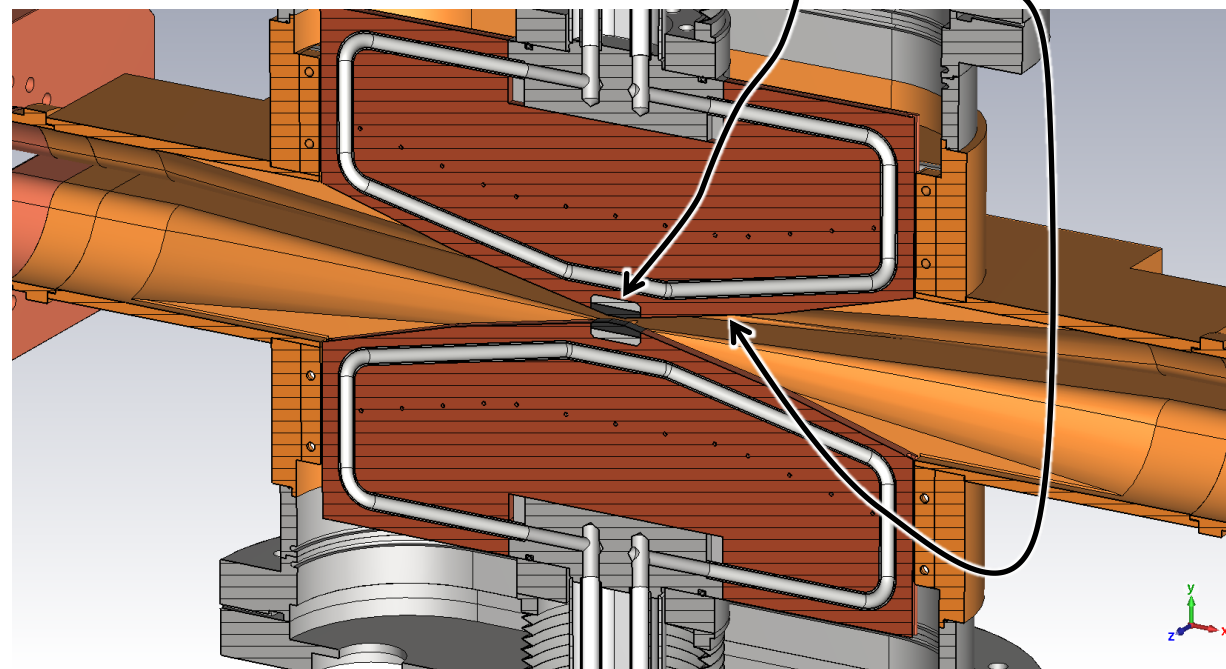
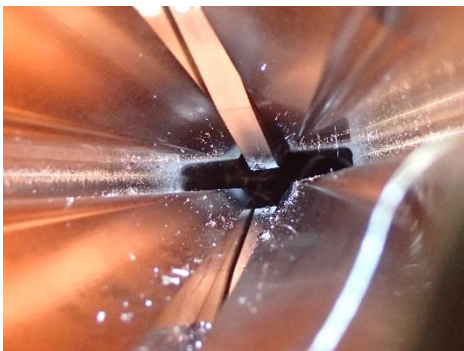
- ✓ The impedance  $\uparrow$
- ✓ More difficult to suppress beam backgrounds at Belle II

# Essential Condition for FB BD

**Coexistence of different materials  
with largely different sublimation/melting points in the same place**

- In the case of the beam collimators at SuperKEKB
  - Heads made of W, Ta with a high sublimation point
  - Chambers made of Cu with a low sublimation point

A lot of FB candidates from the damaged collimator heads



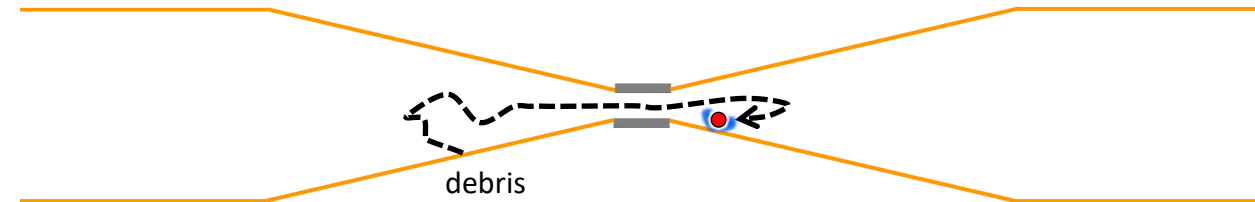
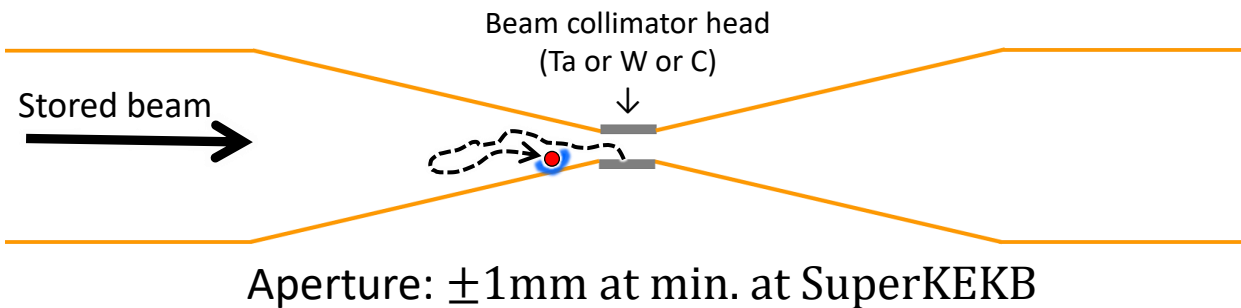
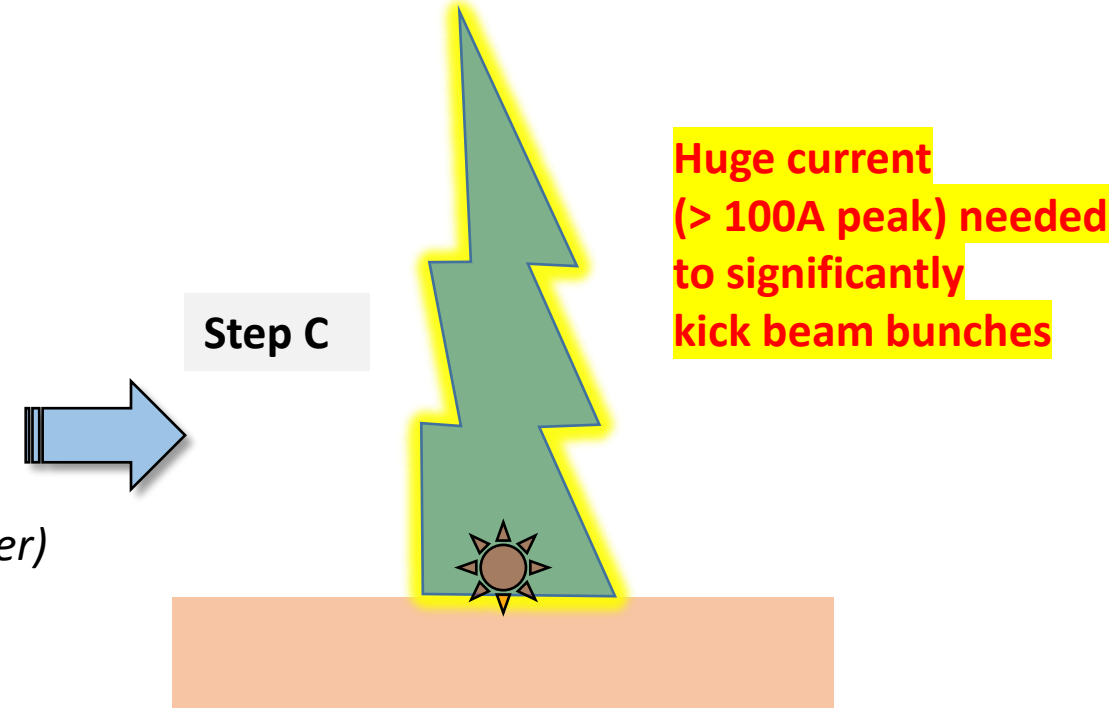
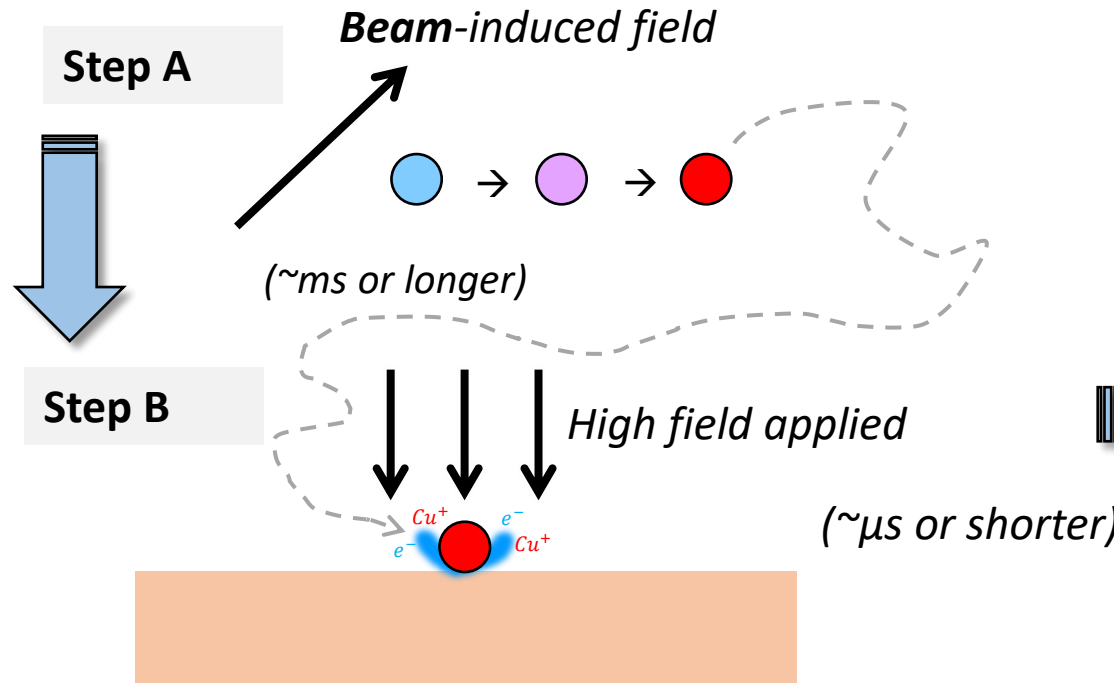
SuperKEKB beam collimator

**Phenomena similar to FB BD can occur around beam collimators.**

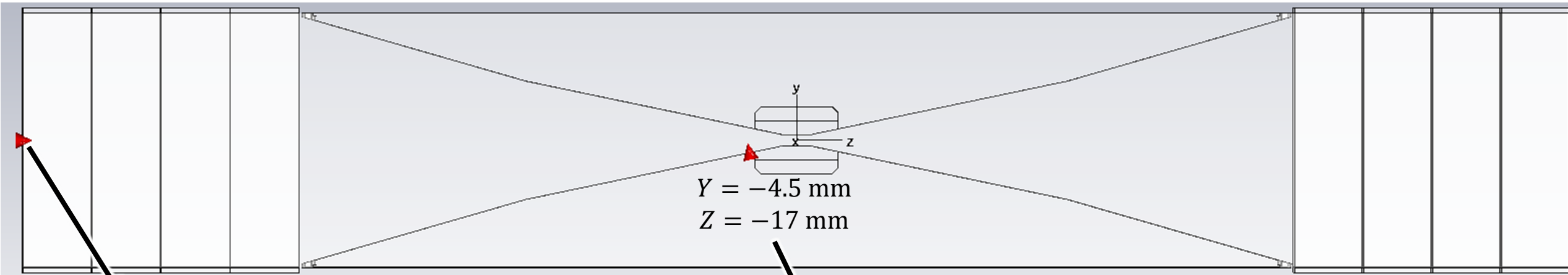
# A fireball could cause a sudden beam instability in an accelerator with very small apertures.

T. Abe, "Fireball Hypothesis for the Trigger of Sudden Beam Losses at SuperKEKB", TUP01 in Proceedings of the 20th Annual Meeting of Particle Accelerator Society of Japan (PASJ2023), 2023.

Sudden significant kick of beam bunches?

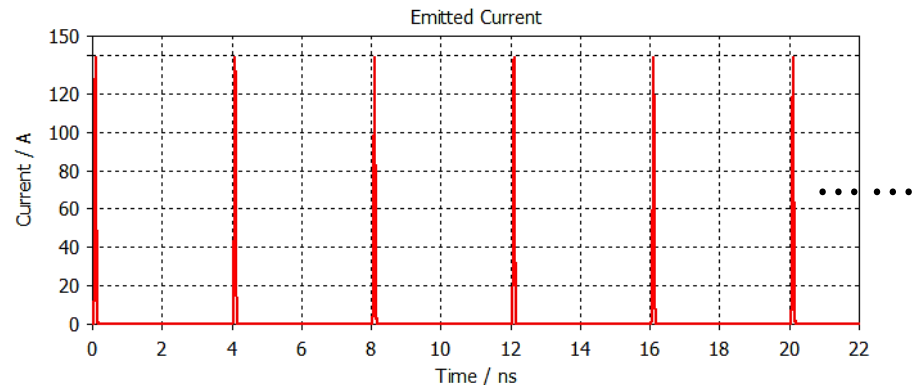


# CST PIC Simulation / Particle Sources

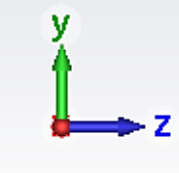
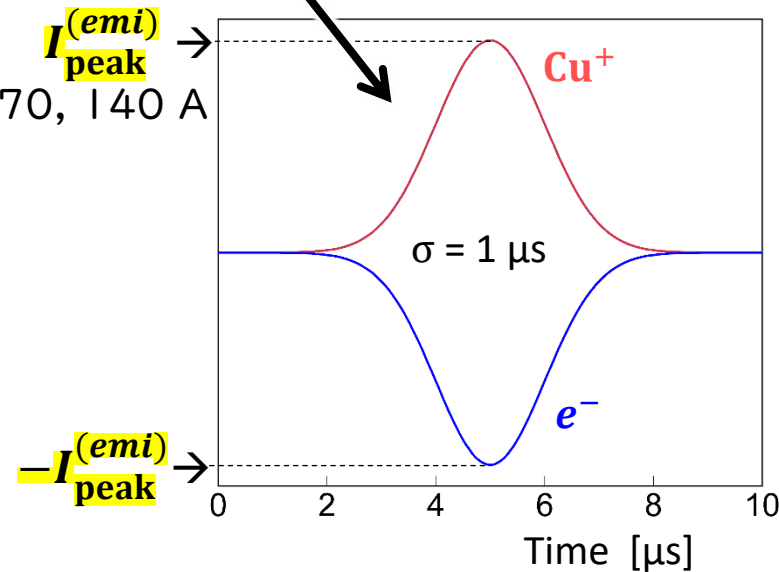


## $e^+$ bunches

- 4 GeV
- 7 nC/bunch
- 6 mm length in z with no transverse size
- 4ns spacing

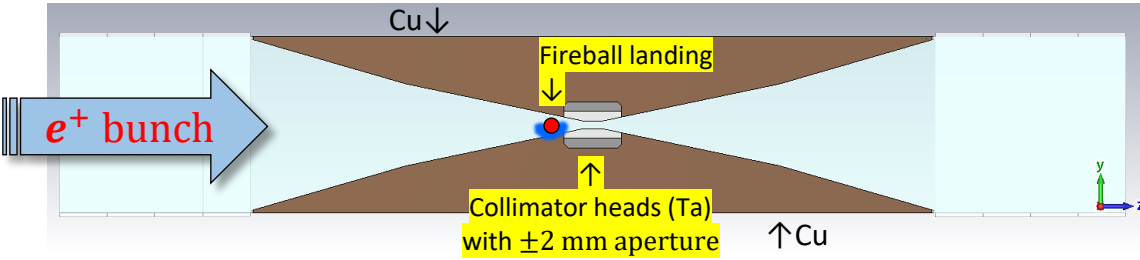


## Simulating plasma generation



Initial velocities of emitted particles are determined from the initial temperature ( $T_{\text{ini}}^{(emi)}$ ) of the plasma according to Maxwellian distribution

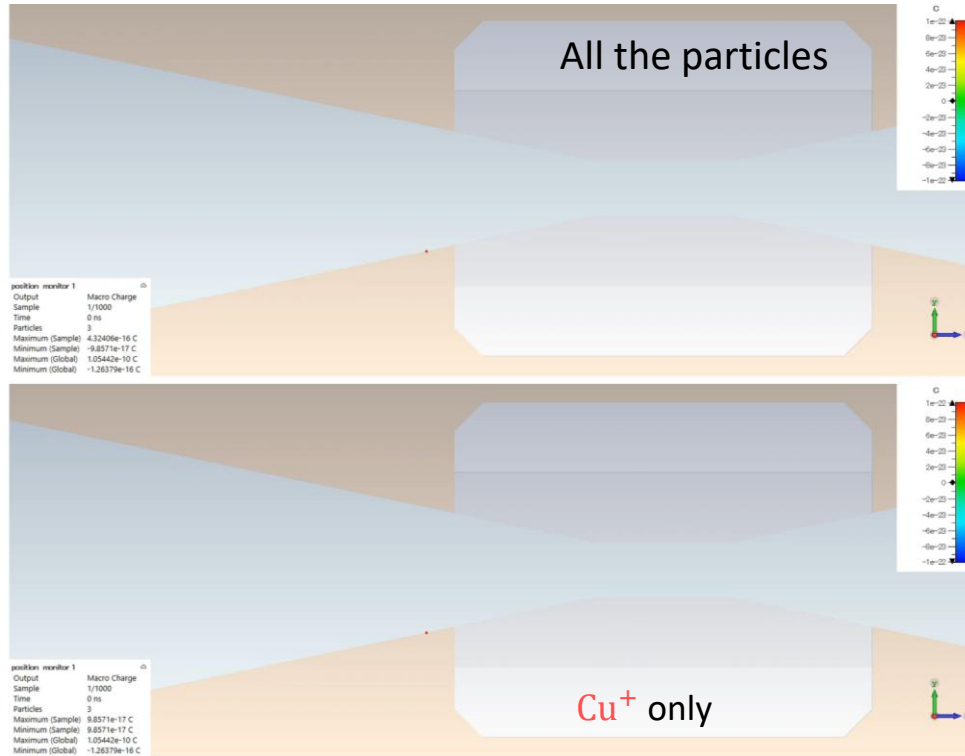
# Results of the CST PIC Simulation



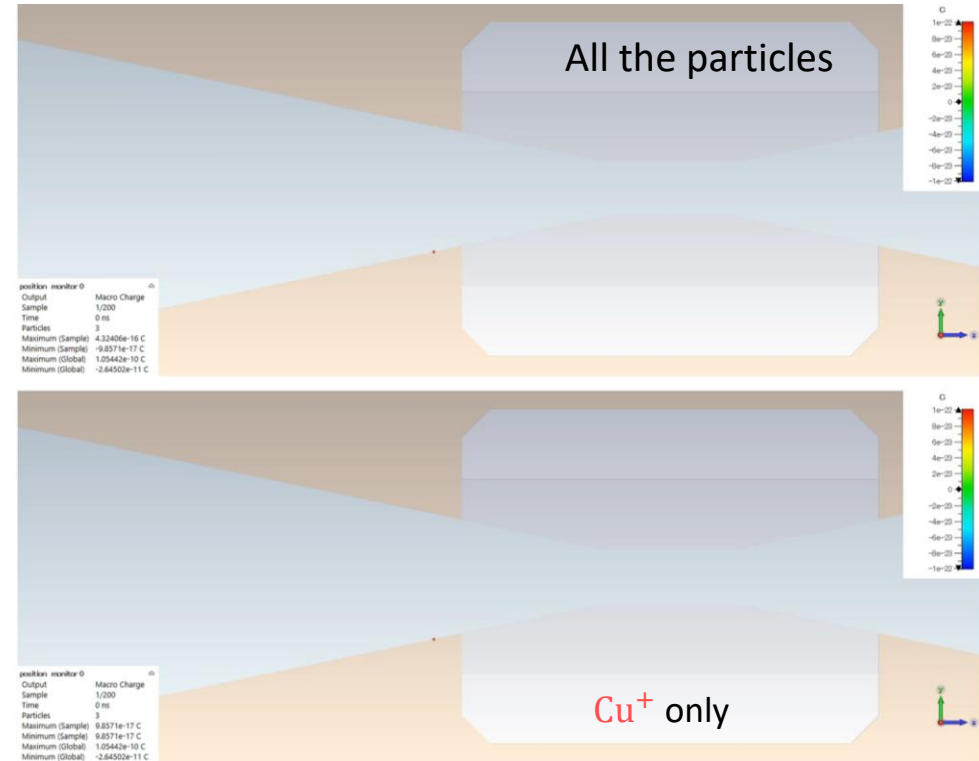
**Full simulation of the dynamics of the LER  $e^+$  and emitted  $e^-$ ,  $Cu^+$  and interactions among them**

+ positive charge  
- negative charge

(Short time range)  
 $t = 0 - 50 \text{ ns}$



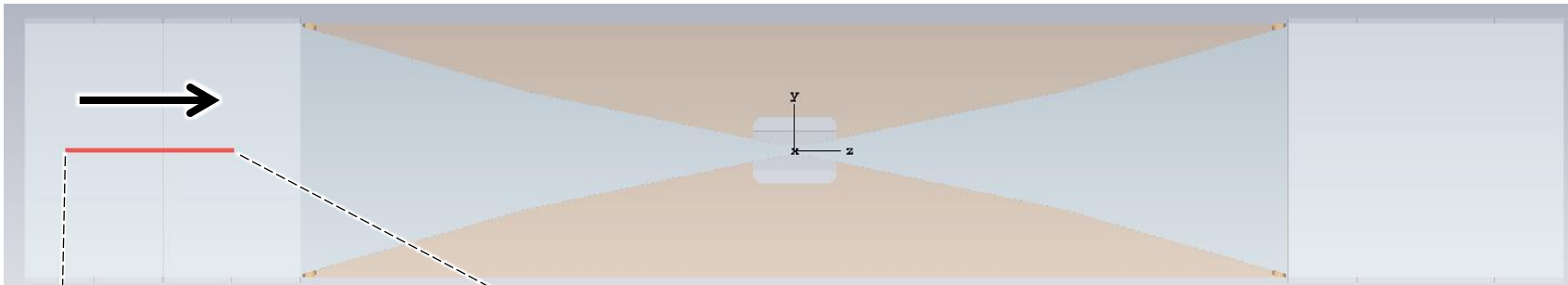
(long time range)  
 $t = 0 - 10 \mu\text{s}$



<https://youtu.be/Ow0IX8bEB9g>

<https://youtu.be/5pHMwFmjSyo>

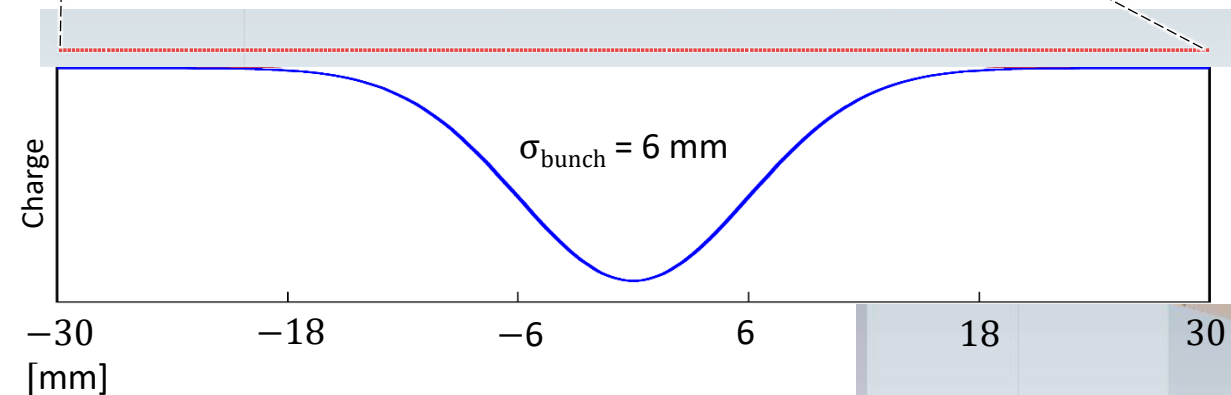
# Calculation formula of the transverse kick



**Initial state**

$$p_y^{(i)} = 0$$

( $i$ : macro-particle, 1, 2, ..., 265)



**Final state**

$$k_y = P_y / P_z$$

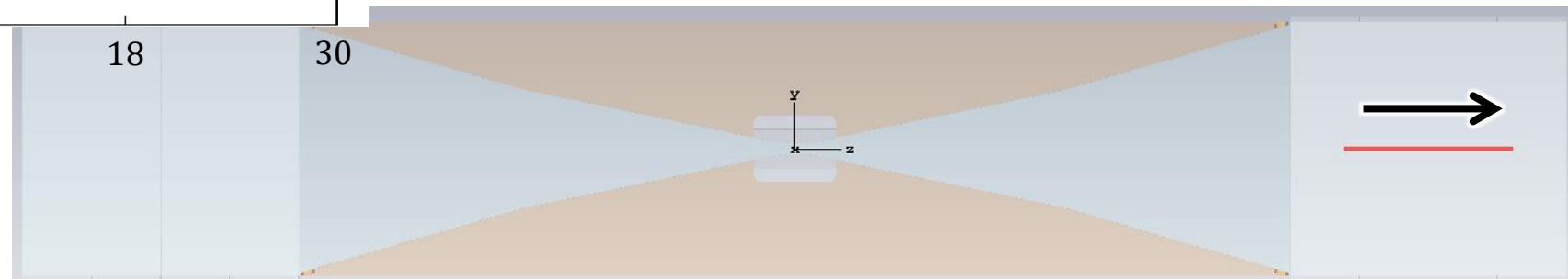
$$P_y = \frac{1}{Q_b} \sum_{i=1}^{N_{mp}} p_y^{(i)} q^{(i)}$$

$$\Delta P_y = \sqrt{\frac{1}{Q_b} \sum_{i=1}^{N_{mp}} (p_y^{(i)} - P_y)^2 q^{(i)}}$$

$p_y^{(i)}$ : Y-momentum of particles in the  $i$ -th macro-particle

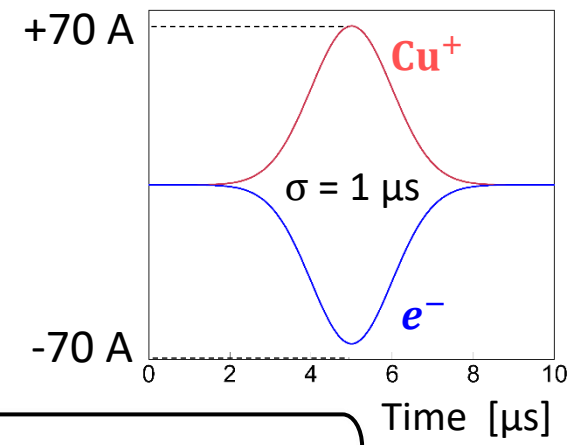
$q^{(i)}$ : Charge of the  $i$ -th macro-particle

$Q_b$ : Bunch charge

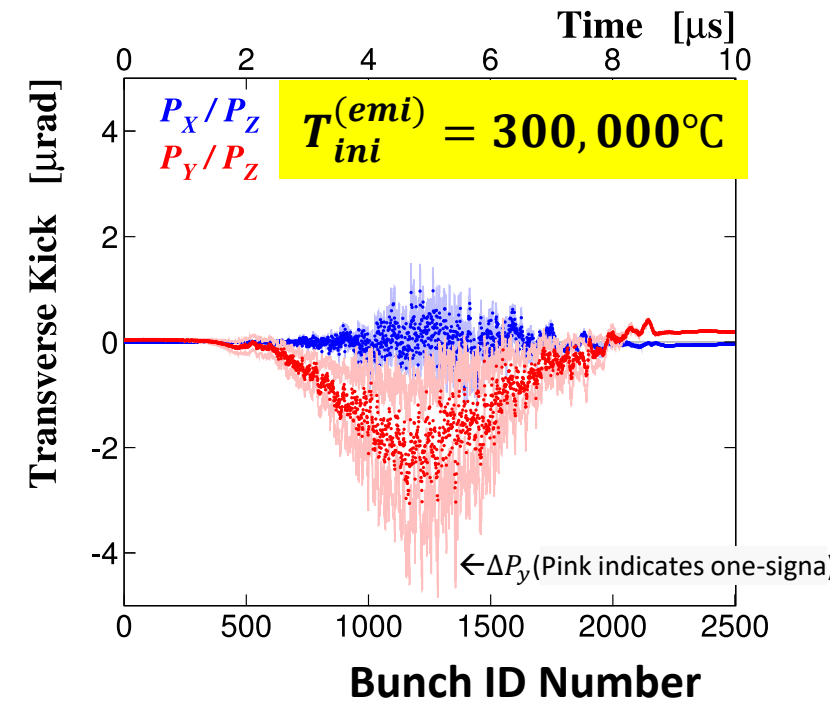
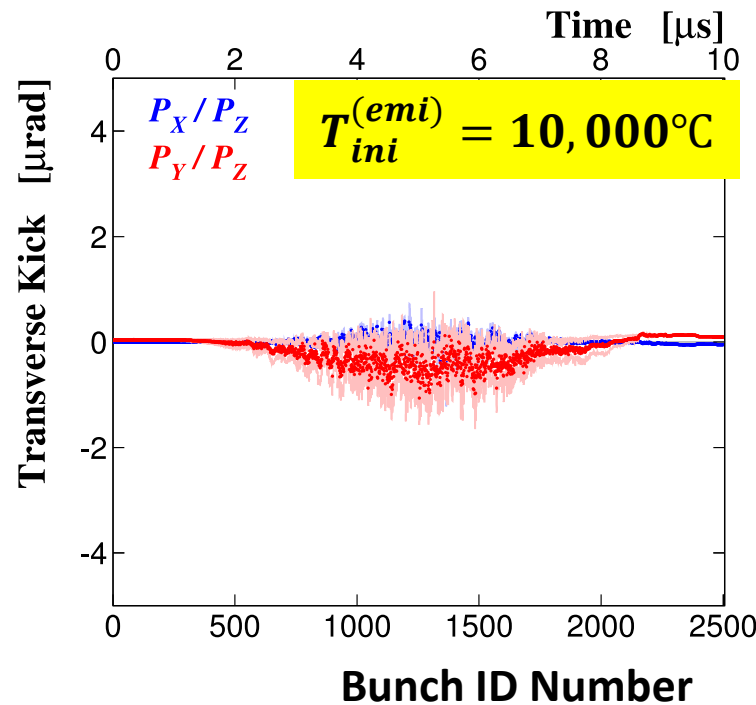
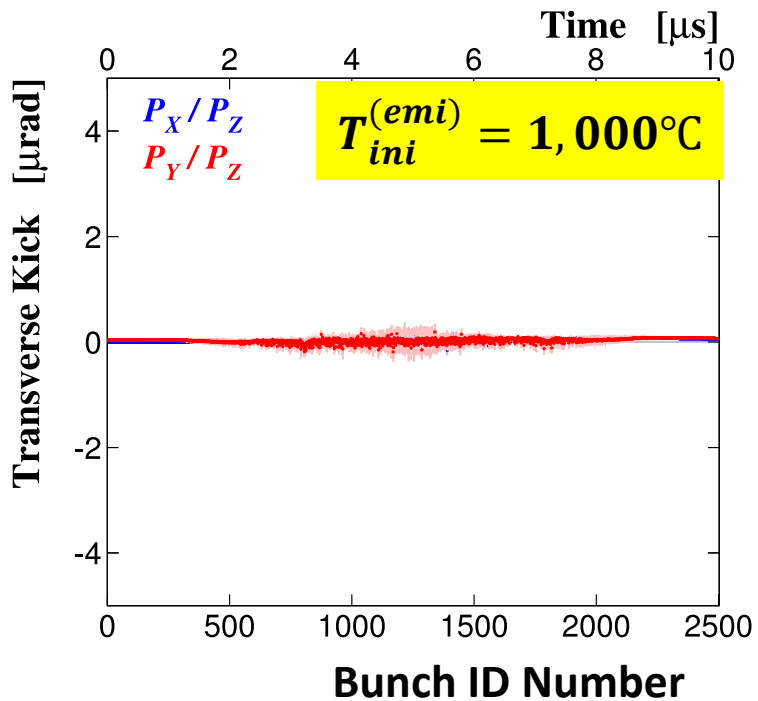




# Transverse kick angles for $I_{peak}^{(emi)} = 70 A$



$I_{peak}^{(emi)} = 70 A$

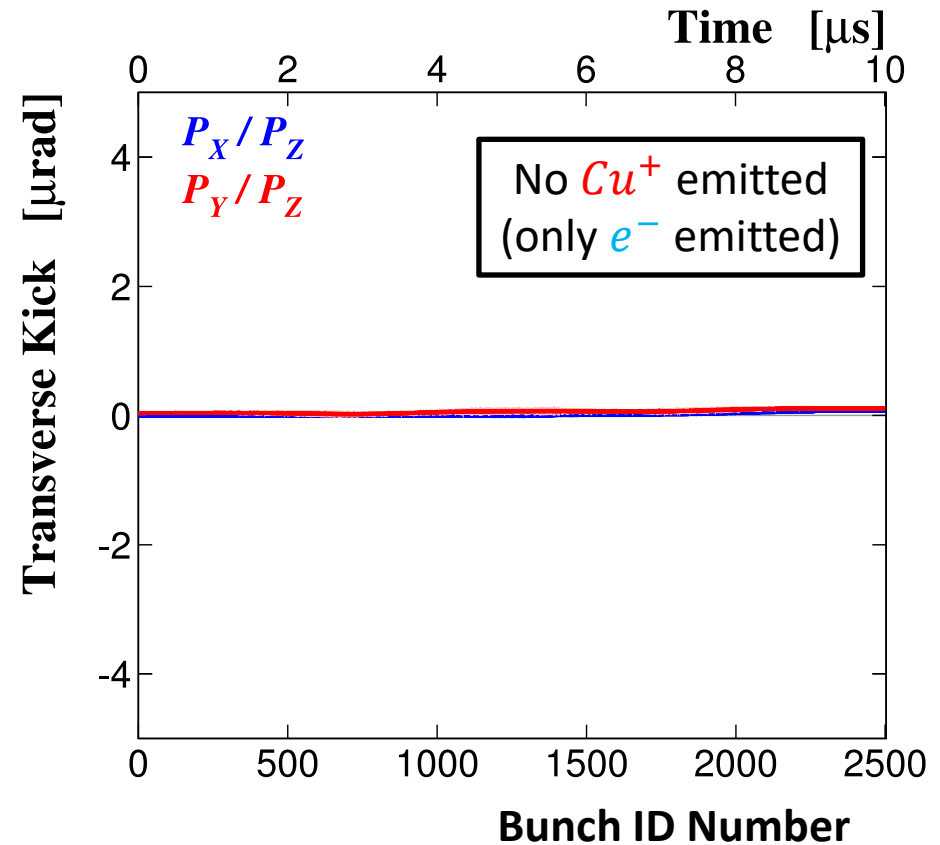
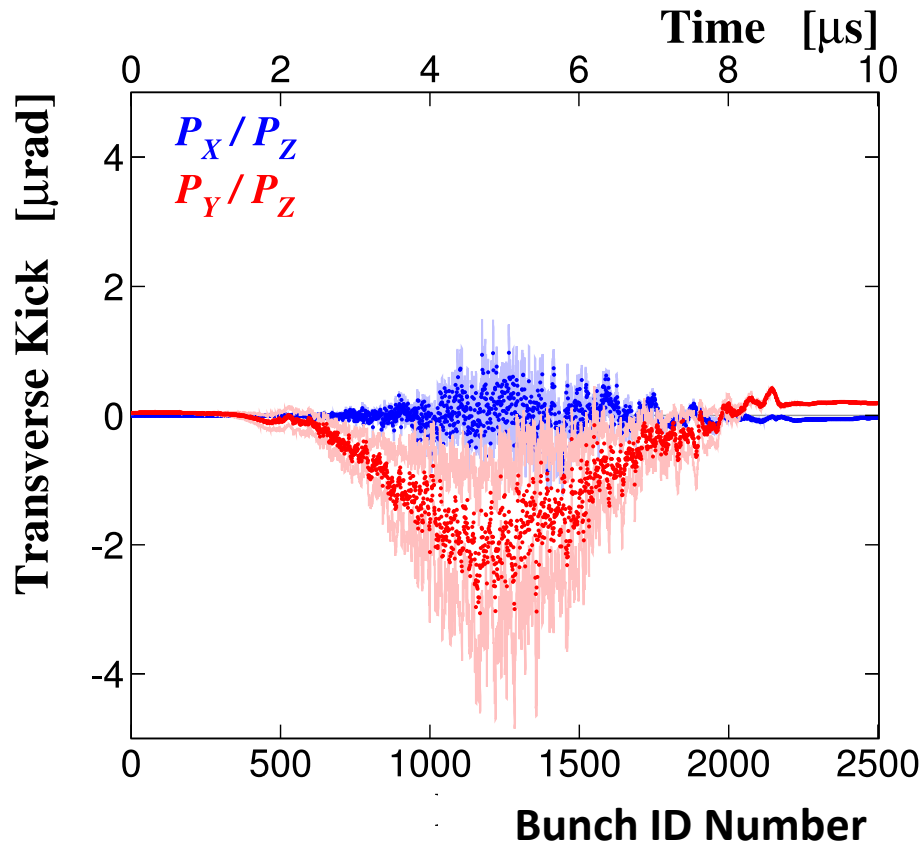


LER  $e^+$  attracted by  $e^-$  emitted from the FB landing point

(Kick angle does not increase with any further increase in initial temperature.)

# Comparison between w/ and w/o $Cu^+$

$$I_{peak}^{(emi)} = 70 A$$
$$T_{ini}^{(emi)} = 300,000^\circ C$$



$Cu^+$  pushes up the space charge limit of emitted  $e^-$

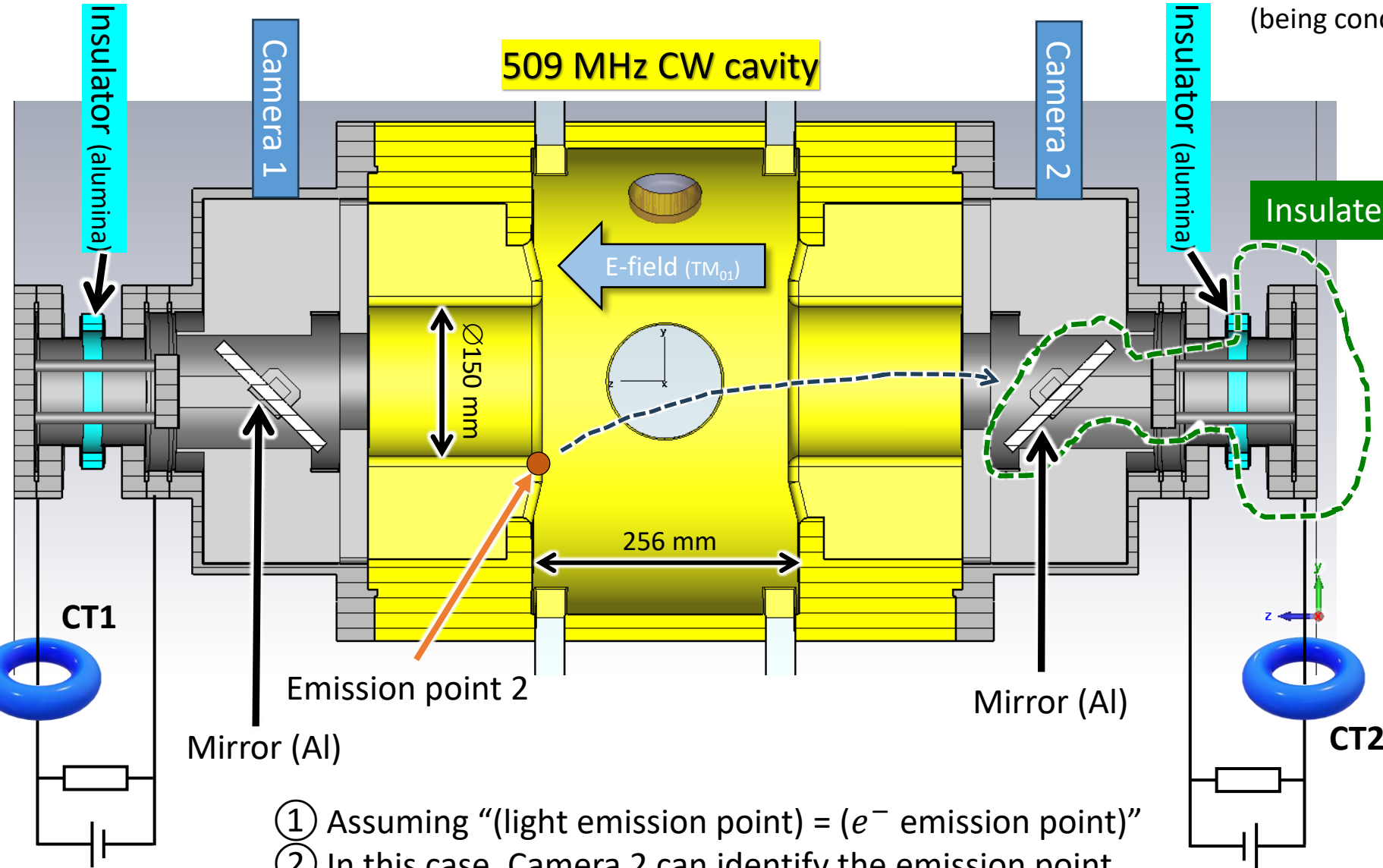
# Relevant Experiment and Observation

# Measurement of total breakdown current

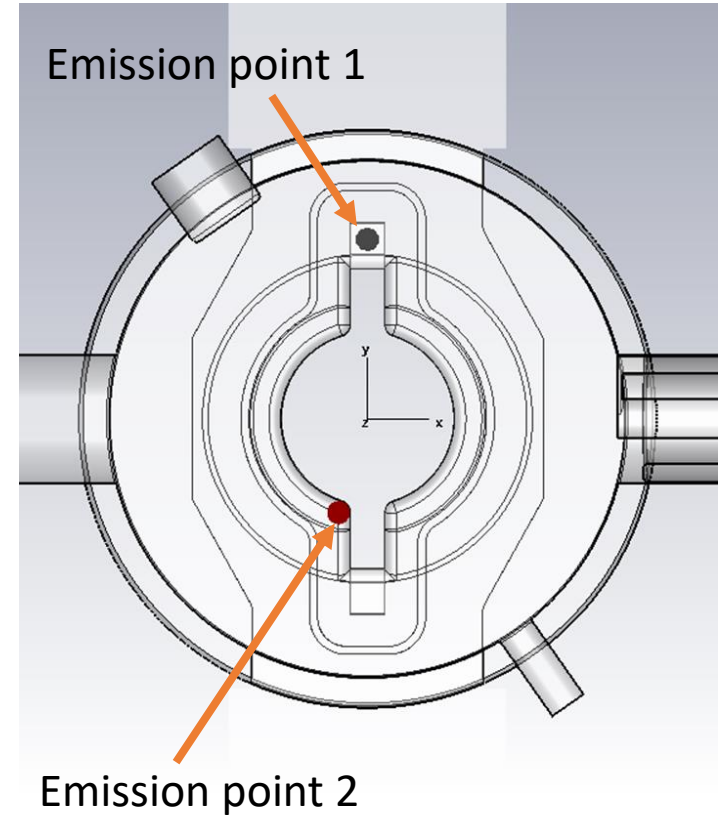
(being conducted by Takaaki YAMAGUCHI (KEK))

Suggests huge currents (peak)  
( $> 100\text{A}!$ ?)

See Takaaki YAMAGUCHI's poster presentation!



Insulated



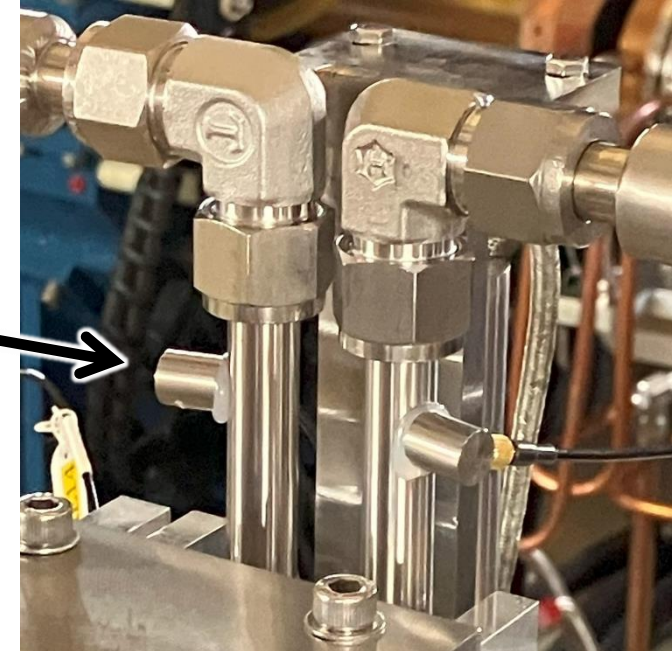
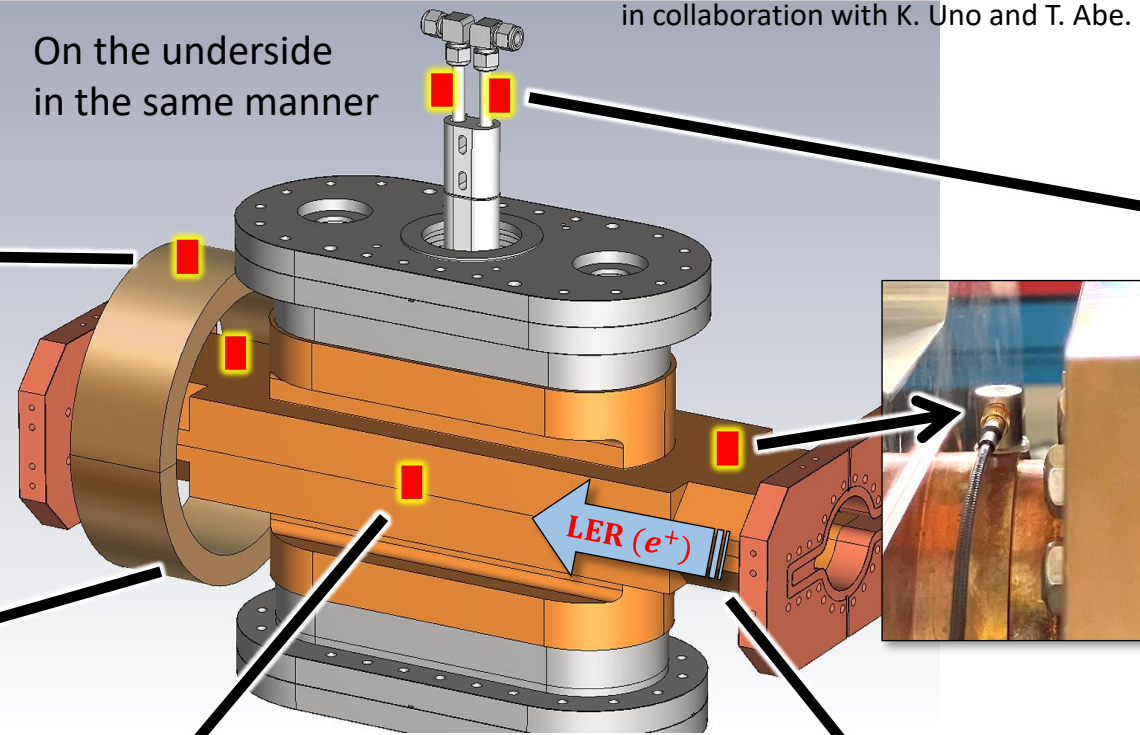
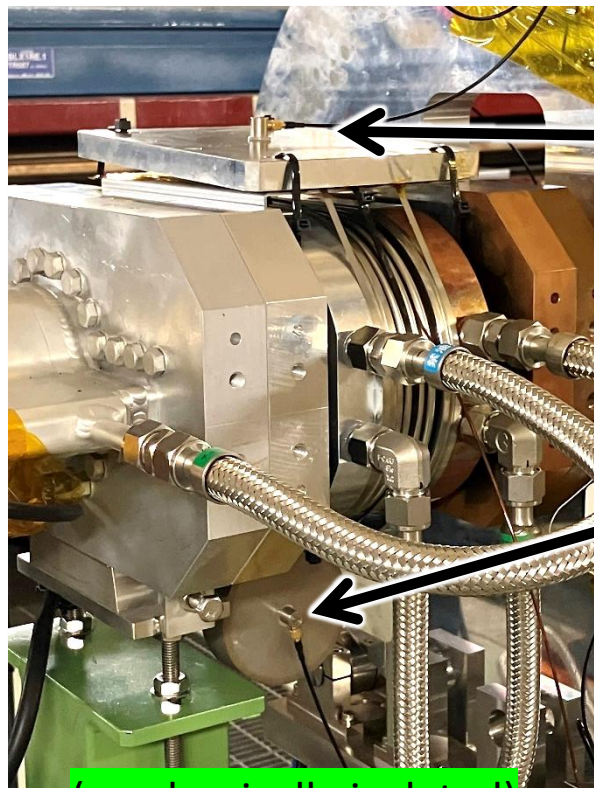
- ① Assuming “(light emission point) = ( $e^-$  emission point)”
- ② In this case, Camera 2 can identify the emission point.
- ③ Percentage of  $e^-$  reaching the mirror to be estimated with PIC sim.

# Acoustic observation to verify the fireball hypothesis for SBL at SuperKEKB beam collimators

Iori OKADA (Nara Women's University) attached all the sensors in collaboration with K. Uno and T. Abe.

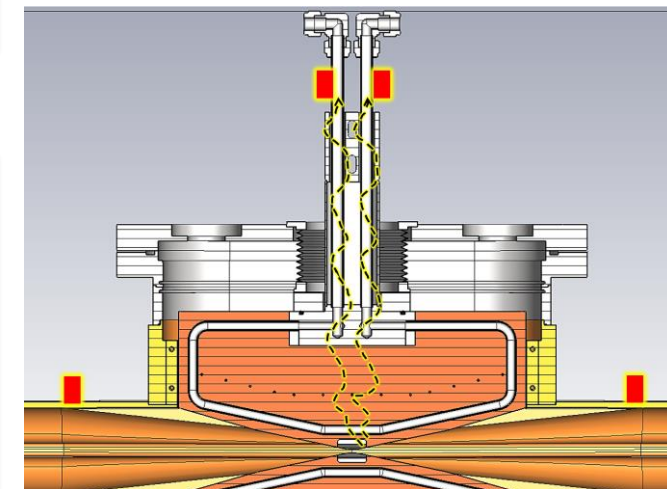
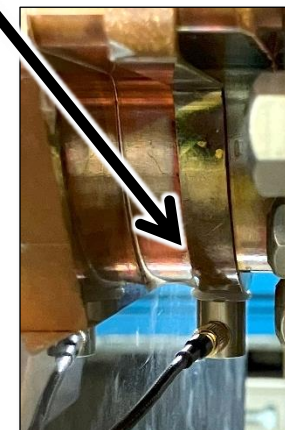
Acoustic loss monitor

On the underside in the same manner

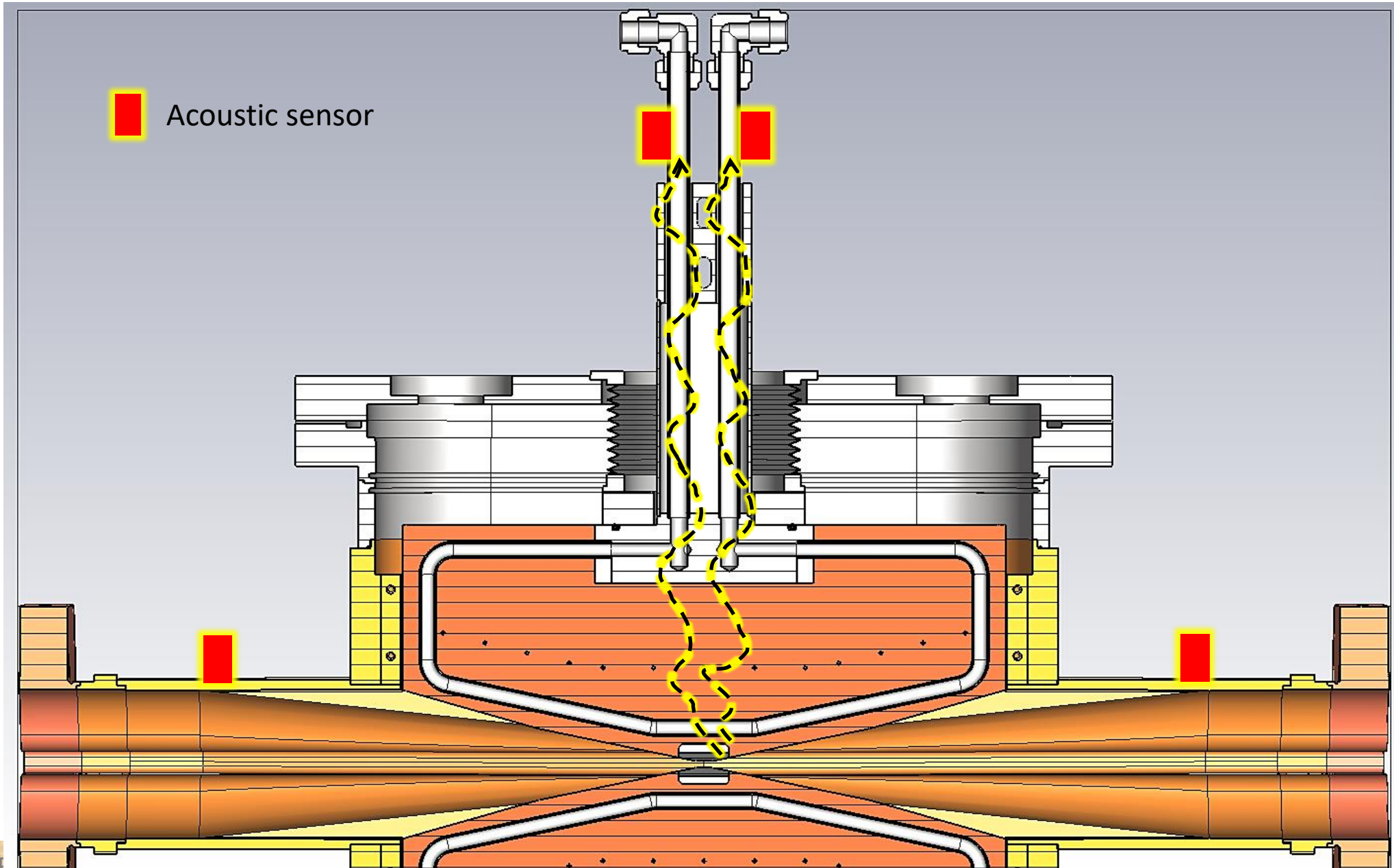


Can hear AE around the head.

(mechanically isolated)



# We can hear acoustic waves from the collimator head.



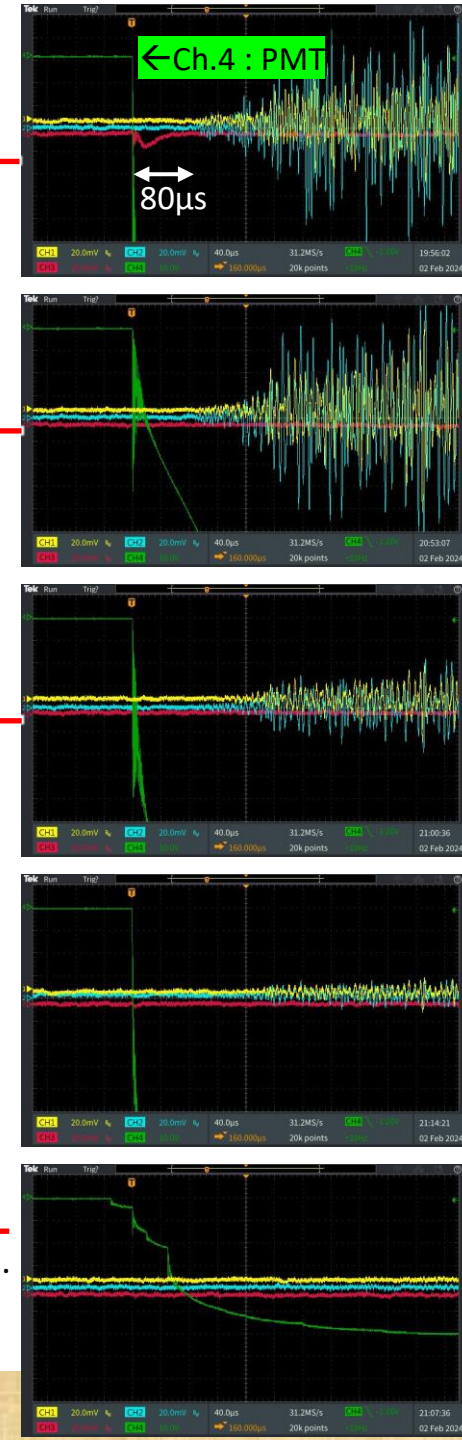
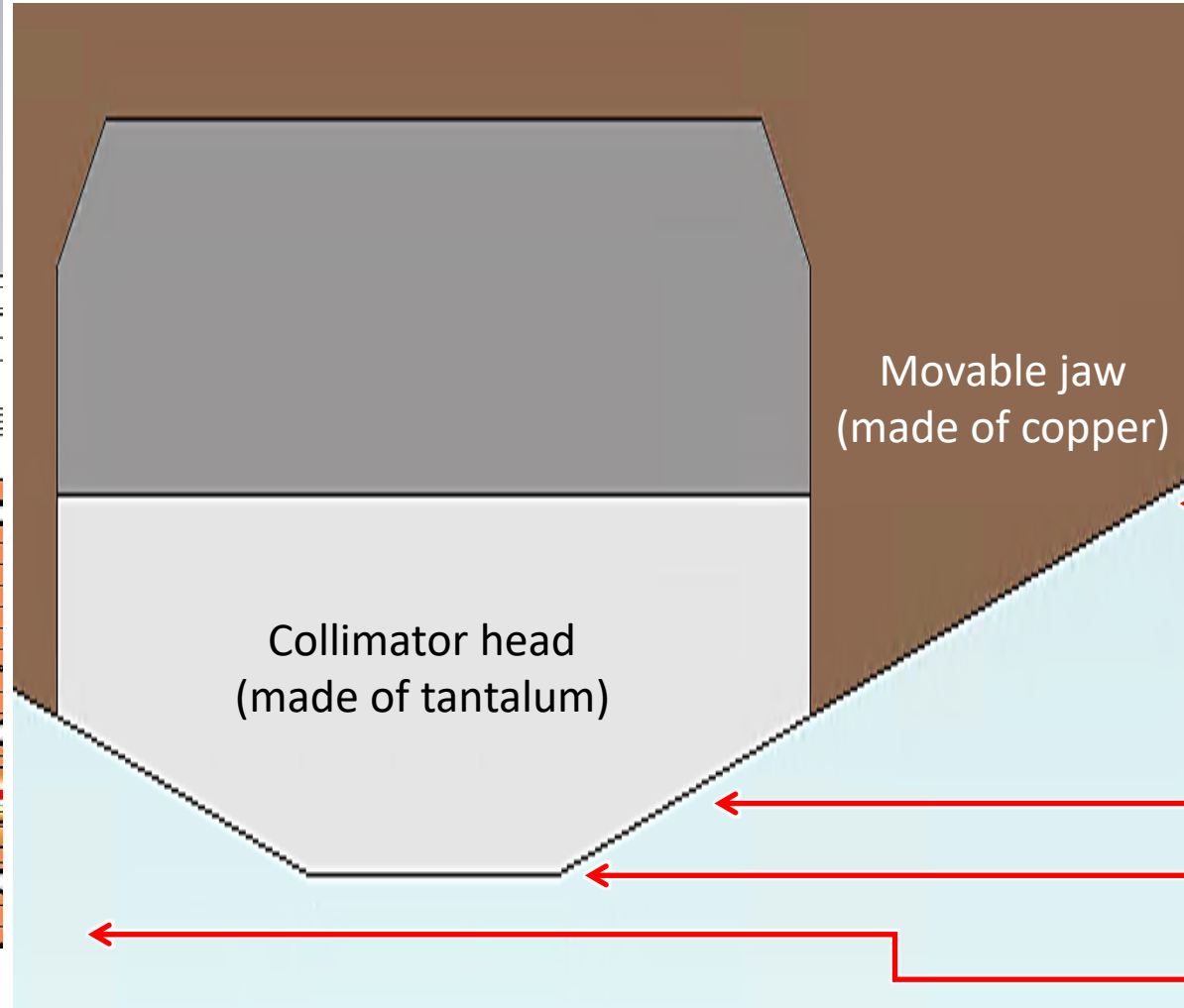
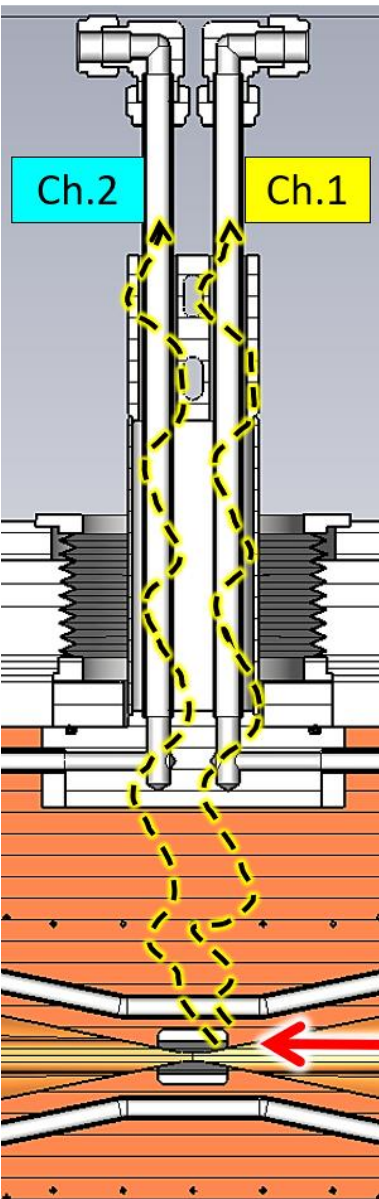
# Machine study with single-bunch shots (4GeV, 0.5nC)



T. Abe, S. Ogasawara, H. Koiso, H. Ikeda, S. Terui, T. Ishibashi, N. Iida, Y. Ohnishi (SuperKEKB)

I. Okada, K. Uno, T. Koga, K. Miyabayashi (Belle II)

(The beam impact points indicated by the red arrows below are rough guesses.)



➔ *Precise timing reconstruction for acoustic wave generation*

➔ The bunch was Stored.

# Summary

- Fireballs,  $> 1,000\text{degC}$  electrically-charged micro-particles, have been observed in UHF CW cavities.
  - Adhering to copper surfaces or flying
  - So far, we can operate the RF cavities with fireballs.
    - The breakdown rates are low enough for beam operation so far.
- Fireballs have been found to be a dominant trigger seed of RF breakdowns in UHF CW cavities.
  - Except for early stage of high-power RF conditioning
- Fireball hypothesis is proposed to explain the possible trigger of the sudden beam losses at SuperKEKB accelerator.
  - The cause might be the same mechanism as that of the fireball-triggered breakdown in RF cavities.
  - Relevant simulation, experiment, and observation on-going



# *Thank you for your attention*

For more details on:

## ■ The fireball hypothesis

- [T. Abe, "Fireball Hypothesis for the Trigger of Sudden Beam Losses at SuperKEKB", in Proceedings of the 20th Annual Meeting of Particle Accelerator Society of Japan, PASJ2023-TUP01 \(2023\).](#)

## ■ Fireball breakdown of RF cavities

### ● KEK Accl. Lab. Topics (web article)

- *"Minuscule Gremlins Cause Vacuum Breakdown in Radio-Frequency Accelerating Cavities"*  
– <https://www2.kek.jp/accl/eng/topics/topics190122.html>

### ● Presentations at Workshops

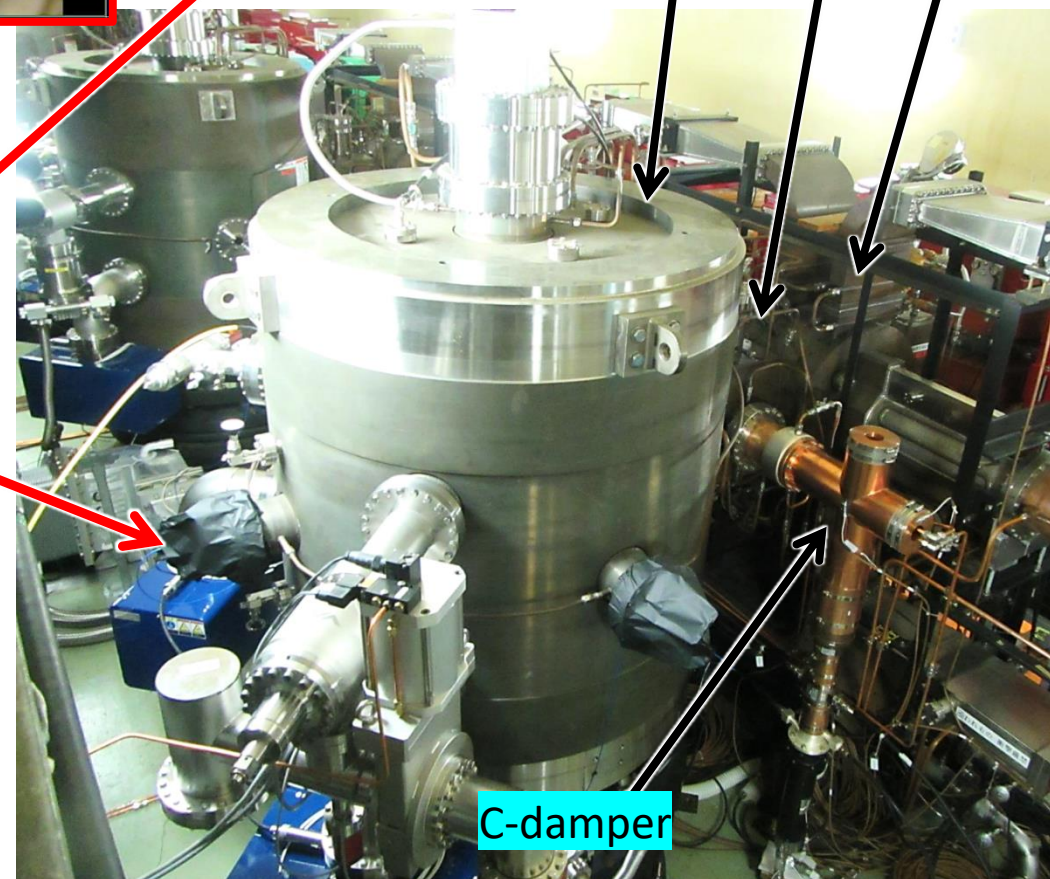
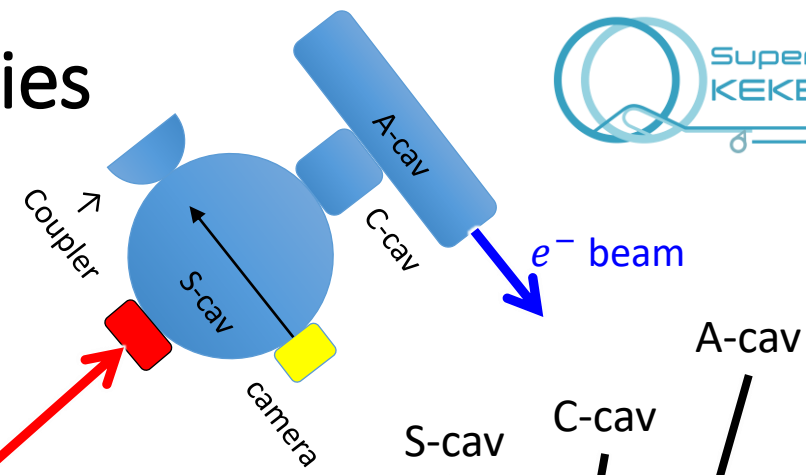
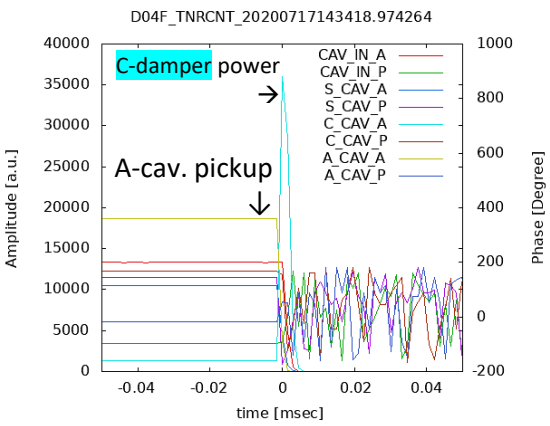
- [T. Abe, "Direct Observation of Breakdown Phenomena in Normal-Conducting Accelerating Structures: 509-MHz Continuous-Wave Cavity and 11.4-GHz Pulsed-Wave Cavity"](#), presented at [the 12th International Workshop on Breakdown Science and High Gradient Technology \(HG2019\)](#), Chamonix, France, June 2019.
- [T. Abe, "Updated Results of Breakdown Study for 509-MHz Continuous-Wave Accelerating Cavities based on Direct In-situ Observation"](#), presented at [the 7th International Workshop on Mechanisms of Vacuum Arcs \(MeVArc 2018\)](#), Puerto Rico, May 20-24, 2018.

### ● Original paper

- [T. Abe, et al., "Direct Observation of Breakdown Trigger Seeds in a Normal-Conducting RF Accelerating Cavity", Physical Review Accelerators and Beams \*\*21\*\*, 122002, 2018.](#)

# Backup slides

# Example of Fireballs observed in the ARES Cavities

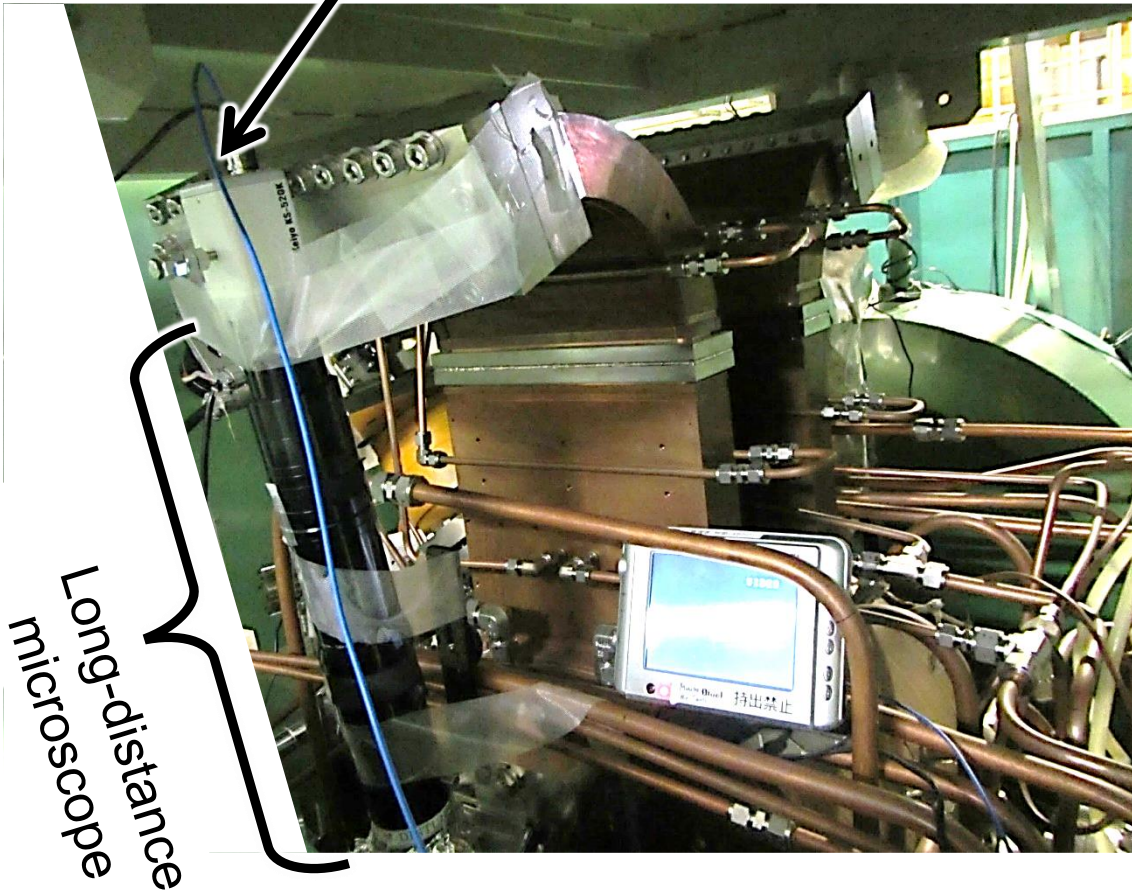


Video file: <https://youtu.be/qtIB6kLf2j4>

# Observation of the FB size

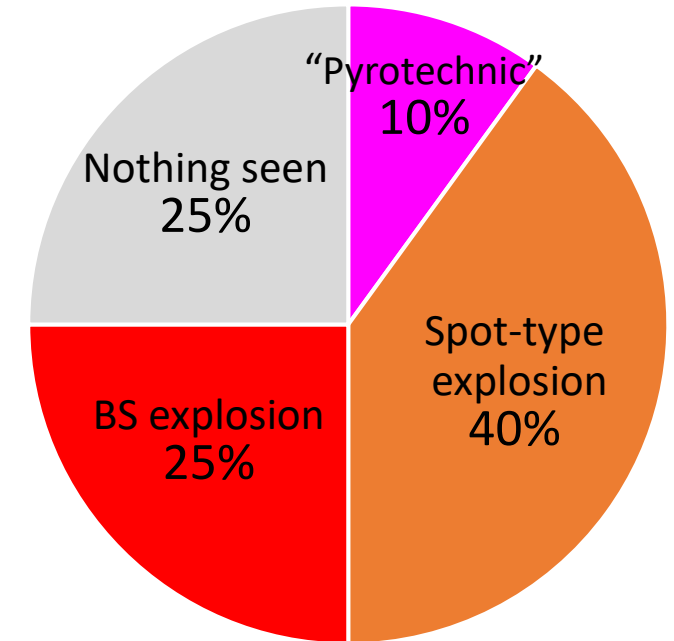
Compact TV camera

$\approx \sim 0.1\text{mm}$



# Statistics on all the 205 breakdown events

- 10% “Pyrotechnic” breakdowns
  - Observed only in the initial stage of RF conditioning
- 25% accompanied by a bright-spot (BS) explosion
- 40% accompanied by a spot-type explosion not originating from a stable bright spot

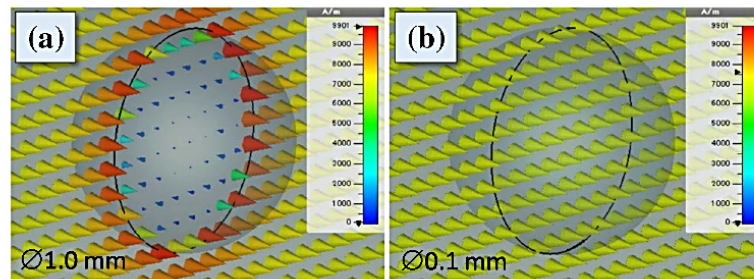


(BS: Bright Spot)

**No observed breakdown events were accompanied by two or more explosions.  
→ Such an explosion must be a breakdown trigger!**

For more details: {  
✓ T. Abe, "Visual Imaging of Radio-Frequency Cavity Breakdown", KEK Accl. Lab. Topics 2016/10/5 (web article): <http://www2.kek.jp/accl/eng/topics/topics161005.html>  
✓ T. Abe, et al., "Breakdown Study Based on Direct In-Situ Observation of Inner Surfaces of an RF Accelerating Cavity during a High-Gradient Test", *Physical Review Accelerators and Beams* **19**, 102001 (2016).

A graphite particle in the constant and uniform magnetic field (509 MHz)



- ..... Ø0.01mm Cu
- - - - Ø0.10mm Cu
- Ø1.00mm Cu
  
- ..... Ø0.01mm Mo
- - - - Ø0.10mm Mo
- Ø1.00mm Mo
  
- ..... Ø0.01mm C
- - - - Ø0.10mm C
- Ø1.00mm C

Temperature of the micro-particle

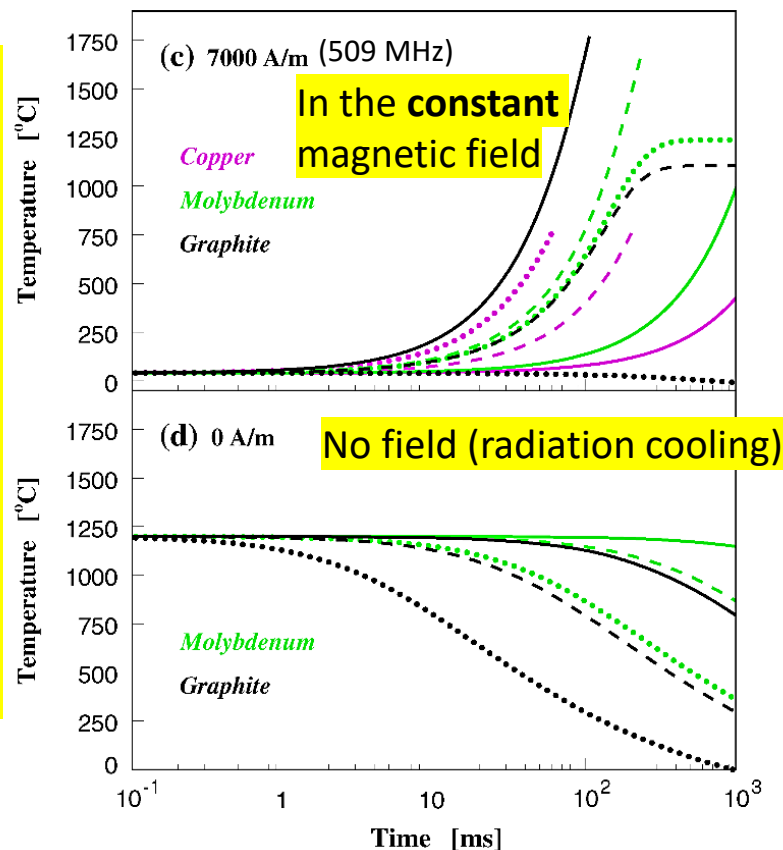
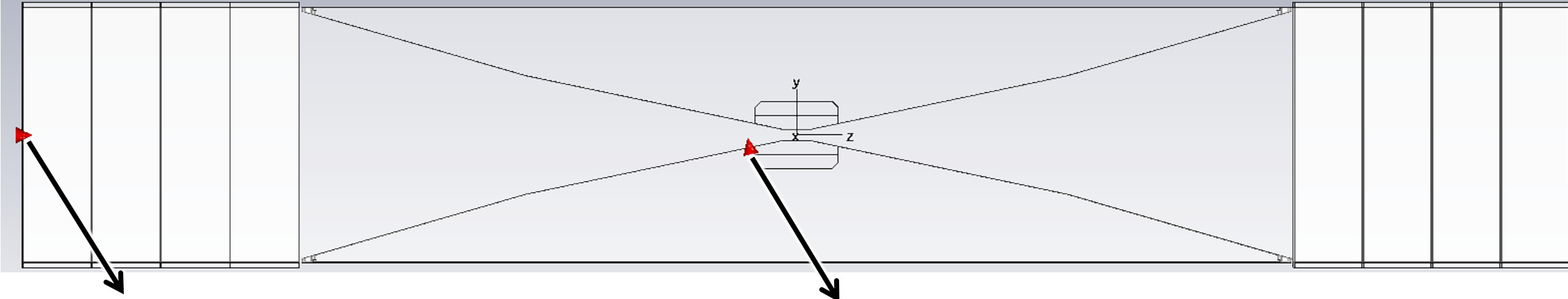


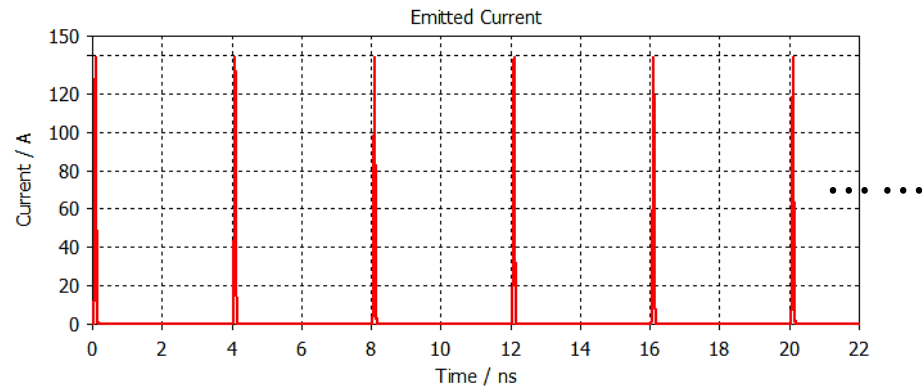
FIG. 22. Simulations of temperatures of spherical micro-particles made of graphite (black lines), molybdenum (green lines), and copper (magenta lines) with diameters of 1.0 mm (solid lines), 0.1 mm (dashed lines), and 0.01 mm (dotted lines) located in a vacuum. Radiation cooling was calculated according to the Stefan–Boltzmann law with an emissivity of 0.8 for graphite and 0.1 for copper and molybdenum. Heat capacities of 0.71, 0.39, and 0.28 kJ/K/kg were used for graphite, copper, and molybdenum, respectively. (a) and (b) Application of a 508.9-MHz magnetic field of 7000 A/m to graphite micro-particles with diameters of 1.0 and 0.1 mm, respectively, assuming an electric conductivity of  $1.0 \times 10^5$  S/m for graphite. (c) Temperature variation of the micro-particles from an initial temperature of 40 °C with heat generation by a magnetic field of 7000 A/m. (d) Temperature variation of the micro-particles from an initial temperature of 1200 °C without heat generation.

# CST PIC simulation / particle sources

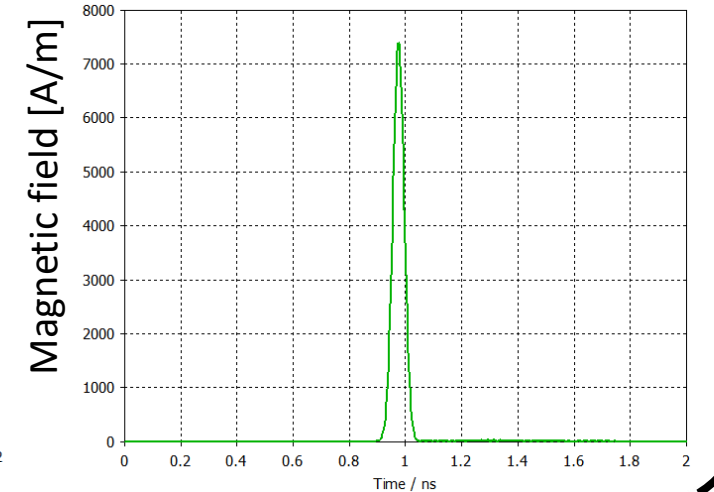
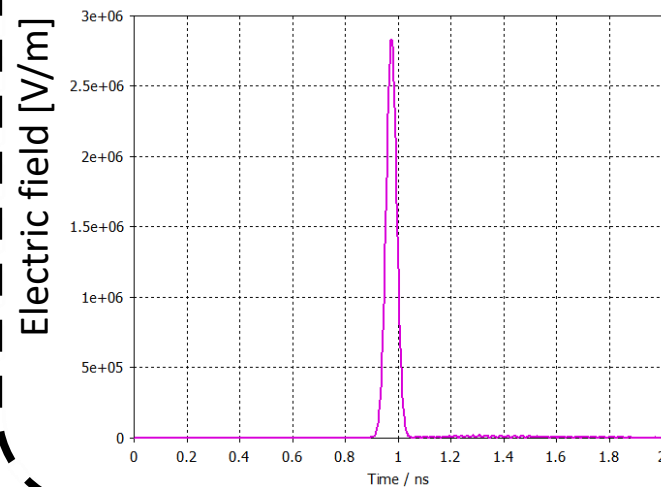


$e^+$  bunches

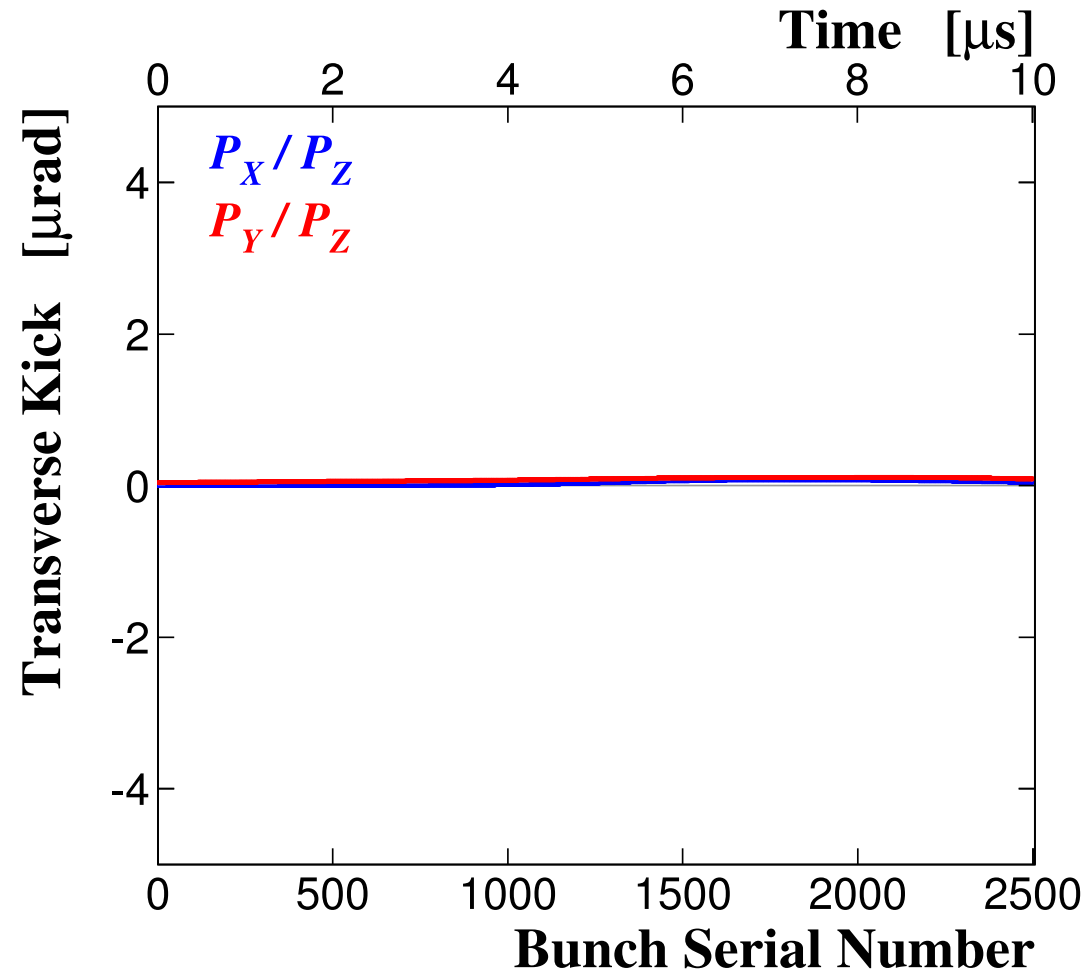
- 4 GeV
- 7 nC/bunch
- 6 mm length in z with no transverse size
- 4ns spacing



The peak field strength at the FB landing point is comparable with that in the RF cavity.



In the special case of no particle emission from the FB landing point (i.e.,  $I_{\text{peak}}^{(emi)} = 0$ )



**Numerical noise level in the PIC simulation:  $\lesssim 0.1\mu\text{rad}$**



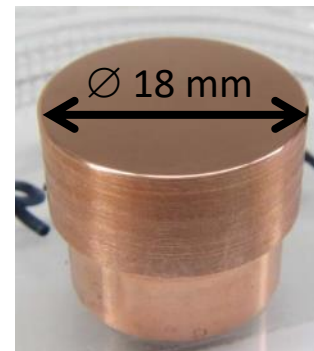
# An Example of Carbonic Microparticles on Copper Surface

Surface inspection by EPMA (Electron Probe Micro Analyzer)

Size of this microparticle : 1  $\mu\text{m}$

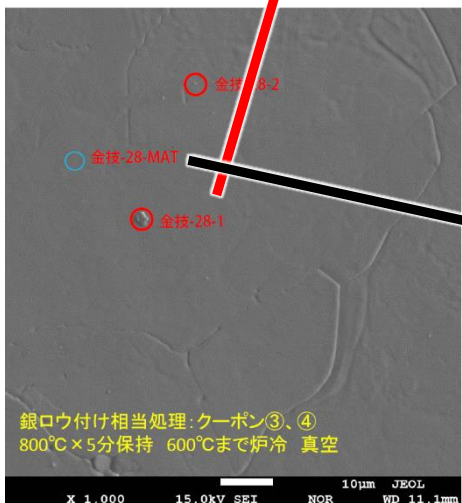
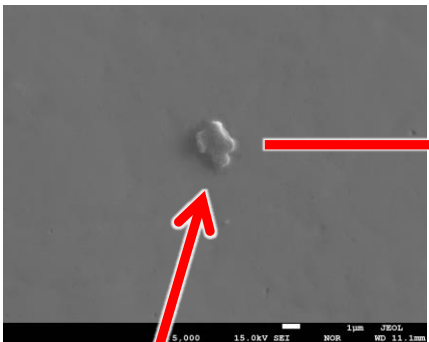
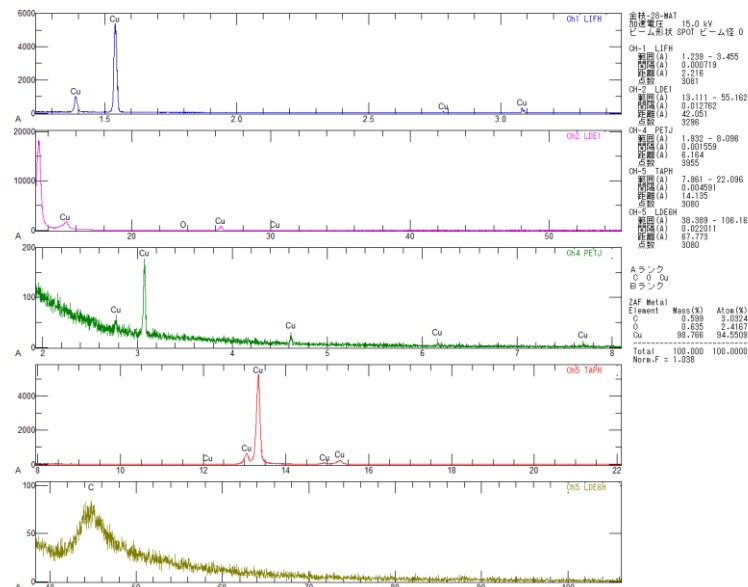
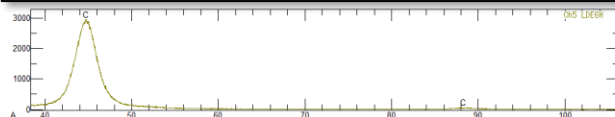
after ultrasonic cleaning in isopropyl alcohol.

Copper Coupon



- ✓ Material : Oxygen Free Copper (Class1)
- ✓ The top surface has Ra=0.03 $\mu\text{m}$ .

ZAF Metal Element	Mass(%)	Atom(%)	K(%)
C	20.875	55.1060	8.987
O	3.011	5.9655	1.594
Mg	0.208	0.2711	0.100
Al	0.309	0.3630	0.189
Si	0.565	0.6383	0.436
S	0.241	0.2389	0.238
Ca	0.355	0.2809	0.421
Cu	74.437	37.1363	81.750
Total			100.000
Norm.F = 0.844			93.714



Inspection conducted by T. Higo (KEK)

Although carbon cannot be melt in copper, it can adhere to copper surface.

# Details on the RF cavity used in this experiment

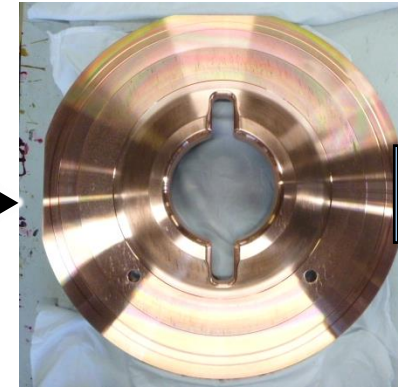
## • Normal fabrication method

- Precision machining of OFC (class1)
- Chemical etching for the barrel
- Electropolishing (EP) for the endplates
  - The inner surface is very smooth.
- Brazed in a vacuum furnace
- Fabricated by an accelerator manufacturer

## • Good high-power performance

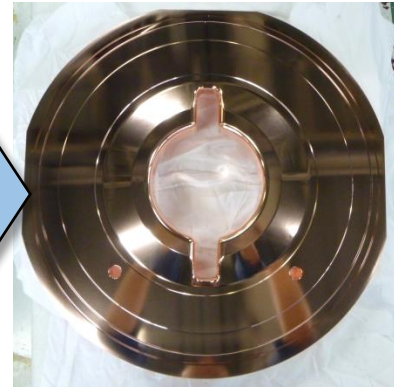
- The breakdown rates are the same as those of other UHF CW cavities
- The vacuum pressure level is normal during high-power operation.

< Before EP >

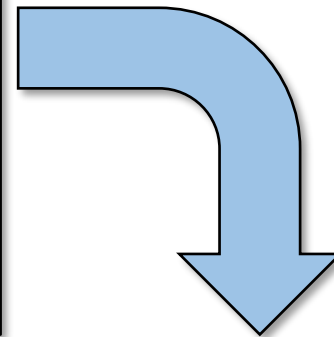


$R_a = \sim 1.5 \mu\text{m}$   
 $R_y = \sim 8 \mu\text{m}$

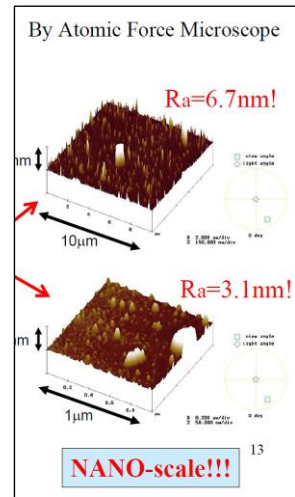
< After EP >



$R_a < \sim 0.2 \mu\text{m}$   
 $R_y < \sim 1 \mu\text{m}$



[PAC'05, TPPT007](#) →

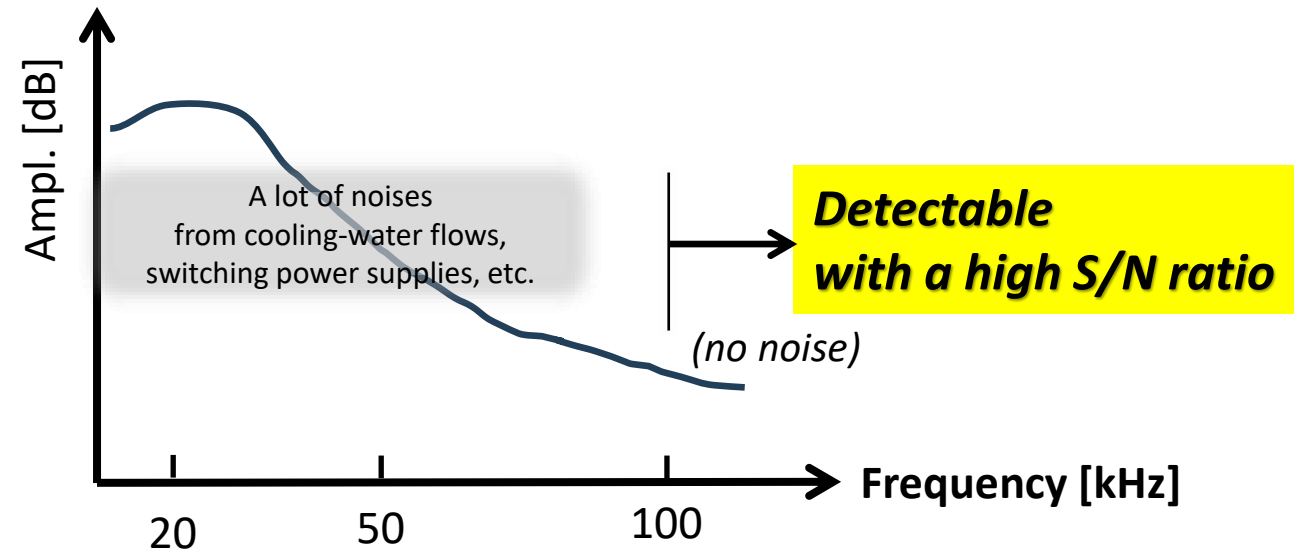
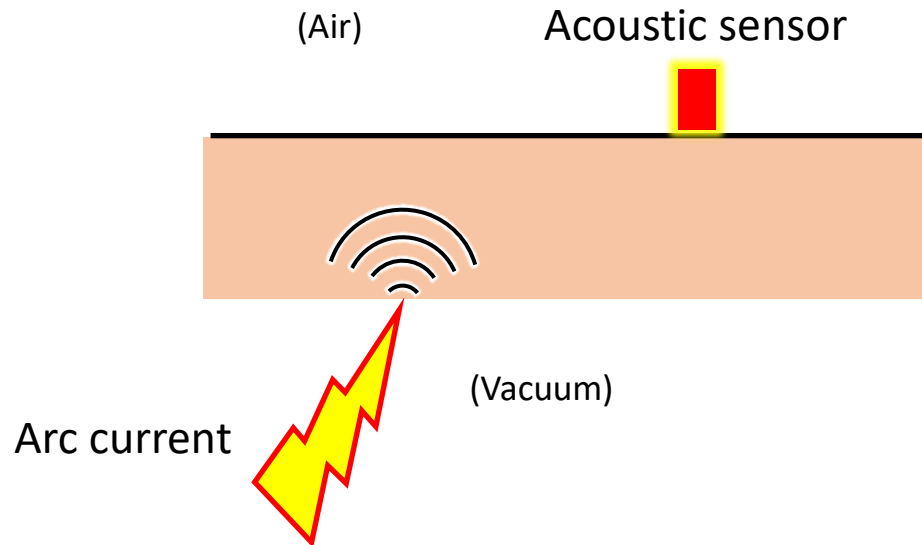


**The results obtained in this study have generality.**

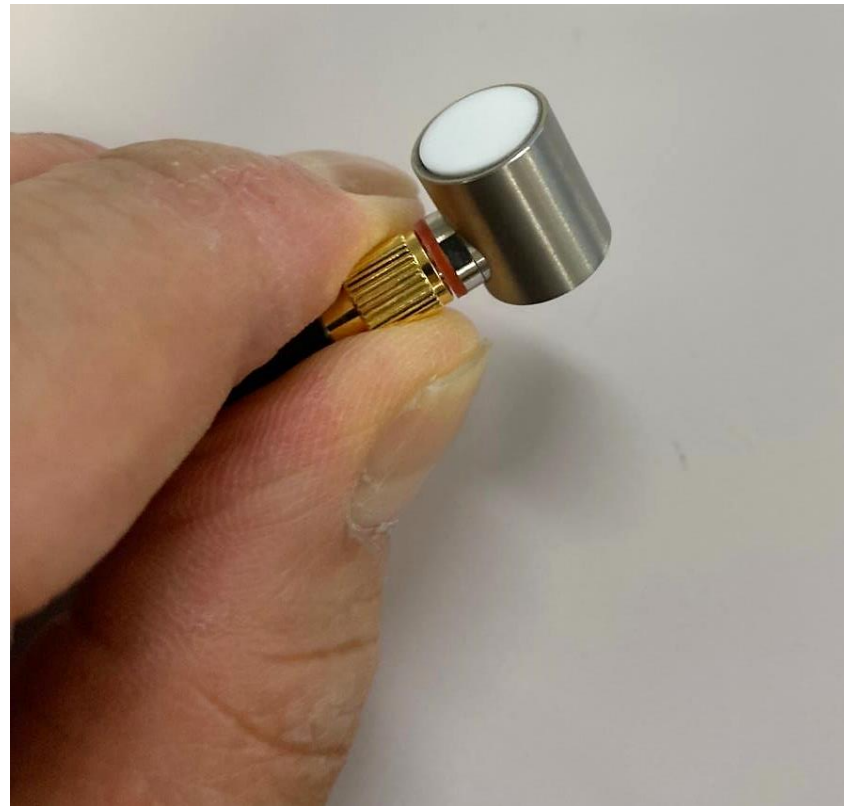
# Why Acoustic Observation?

## ■ How to detect vacuum arcs through:

1. RF-field change → Impossible (no RF monitor port, low Q-value)
2. X-ray emission → Difficult to detect due to the stored beam
3. Light emission → Impossible due to strong synchrotron radiation
4. Acoustic emission: the only one to be detected
  - Acoustic emission is generated by thermal shock when an arc current impacts a metal surface.



# Acoustic sensor used in this observation: AE124AT



- ✓ Resonator type
- ✓ Sensitive only around 120 kHz

## CALIBRATION CERTIFICATE

Conforming to CEN ISO/TR 13115:2011

Non-destructive testing - Methods for absolute calibration of acoustic emission transducers by the reciprocity technique

Method : Two-Transducer Calibration

Transfer medium: Forged Steel, 600mm Dia. 360mm Thickness

Waveform: Tone burst, 0.09msec. period

Model AE124AT

Serial No. 0106

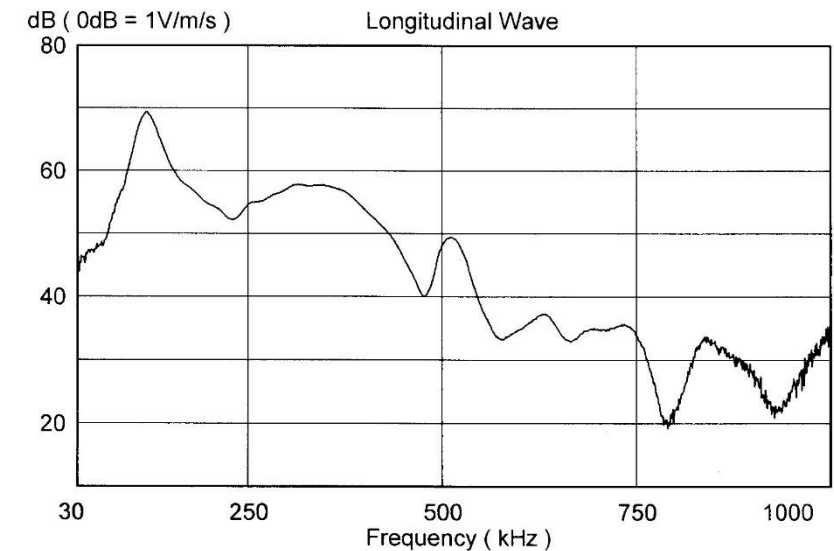
Capacitance  
( Include Cable )  
141 pF

Cable Capacitance  
1 m 90 pF

Tested by Maxim

Date Feb 7, 2022

Note  
\_\_\_\_\_  
\_\_\_\_\_  
\_\_\_\_\_



(Selection by Toshiyasu HIGO (KEK/e+e-Linac))



*End of This File*