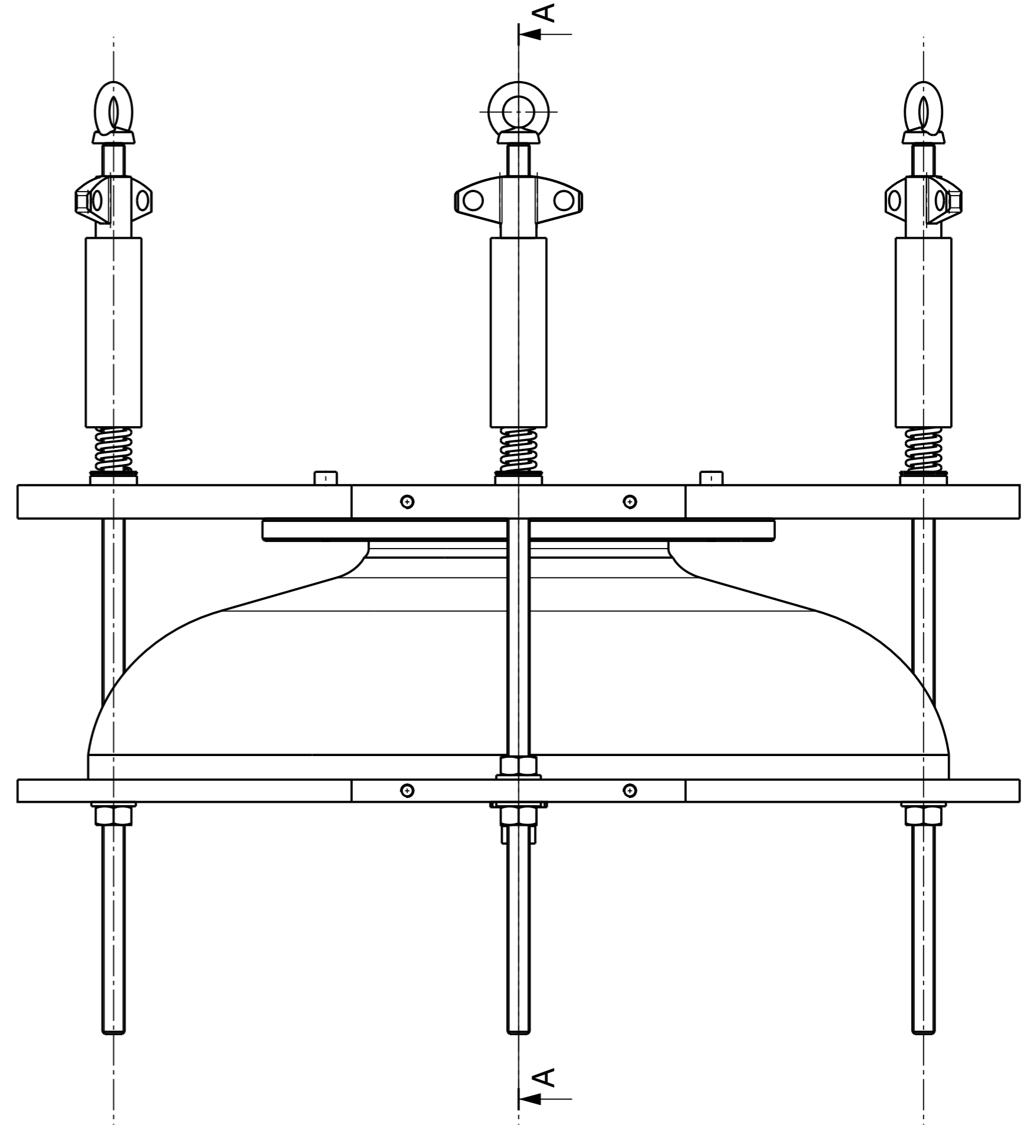


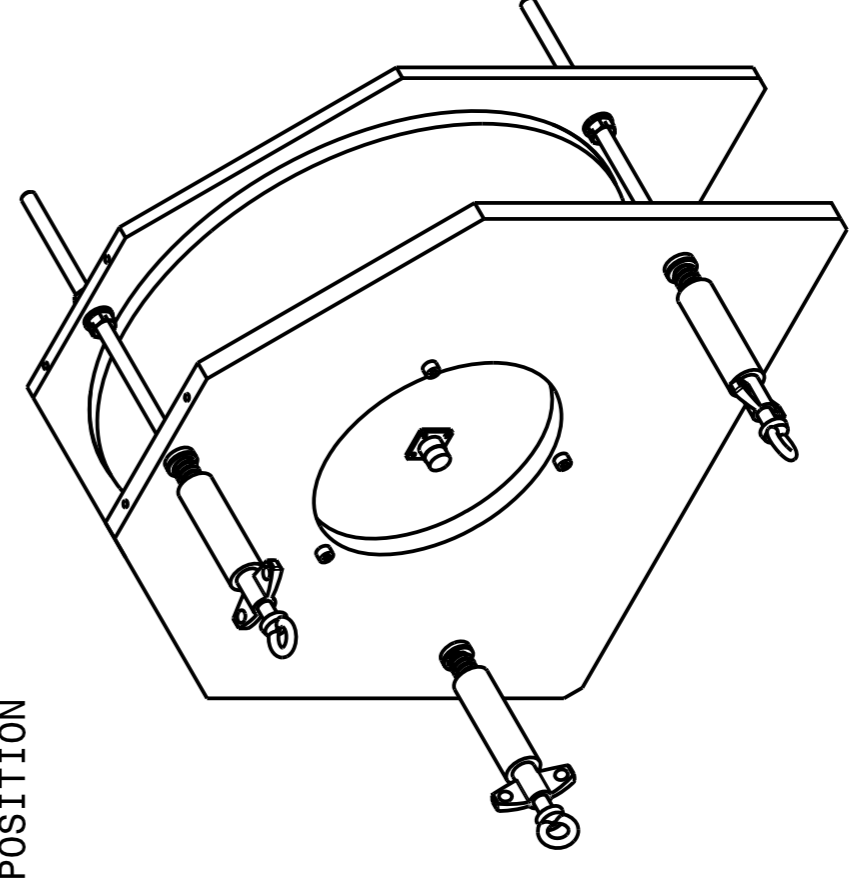
NOTA:

- TIGHTENING IN VERTICAL POSITION
- SERRAGE EN POSITION VERTICALE
- Steepness of spring 6.6 N / mm.
- Force by spring 13.2 daN.
- 3 Springs 39.6 daN
- Raideur Ressort 6.6 N/mm.
- Effort par ressort 13.2 daN.
- 3 Ressorts 39.6 daN

- POSITION HORIZONTALE
- HORIZONTAL POSITION



Mass=28.061kg



1	PLATE-04	Alu EN AW-6062 (T6)	SPLACST_0092
	PLAQUE-04	ST0335446	
1	FIXTURE CELLULE Ø130	Cu OFE	SPLACST_0095
	POSTAGE CELLULE Ø130	C10100 (H02)	ST0335466
3	SCREW M6	Steel	BOSSARD : BN 257 M6
	ANNEAU DE LEVAGE M6	ST0335161	
3	SPRING	VANEL : C.160.250.1000.I	
	RESSORT	ST0335087	
2	FEMALE CHASSIS SOCKET SOLDERING	St. Steel 304L	
	FEMLE CHASSIS FEMELLE À SOUDER	(1.4306)	ST0334929
3	GAUGE	Aluminium	SPLACST_0083
	CALIBRE	ST0334894	
3	NUT	St. Steel 304L	EMILE MAURIN : 16-225-57-10
	ECROU PAPILLON	(1.4306)	ST0334886
3	WASHER	St. Steel 304L	NORELEM : 07420-0210
	RONDILLE	(1.4306)	ST0334880
3	WASHER	St. Steel 304L	NORELEM : 07420-0110
	RONDILLE	(1.4306)	ST0334879
1	PLATE-01	Cu OFE	SPLACST_0081
	PLAQUE-01	C10100 (H02)	ST0334838
1	HALF CELL DIAM 130	Cu OFE	SPLACST_0082
	DEMI CELLULE DIAM 130	C10100 (H02)	ST0290090
6	NORMAL PL WASHER 10X20	Stainless Steel A4	ISO 7089_10x20-A4
	RONDILLE PLATE NORMALE 10X20	Acier: Inox A4	
3	HEX SKT HD CAP SCREW M6X25	St. Steel A4	ISO 4762 M6X25-A4
	VIS CHC M6X25		47.78.15
			010.4
			260.7
3	THREAD M10XLG400	St. Steel 304L	SPLACST_0083
	TIGE FILETEE M10XLG400	(1.4306)	ST0335454
6	HEX NUT STYLE1 GRADE A M10	Stainless Steel A4	ISO 4032_M10-A4
	ECROU H STYLE1 GRADE A M10	Acier: Inox A4	
QUA	DESCRIPTION	POS	MAT.
ENS/ASS	Superconducting Cavities, Tooling	S-ENS/S-ASS	REF.CERN
SCALE		1:2	
DRAWN		F. PILLON	2011-03-07
CONTROLLED			
RELEASED			
APPROVED			
CAD Document Number		ST0335465_02	
REPLACES			
NON VALABLE POUR EXECUTION			
NOT VALID FOR EXECUTION			
SIZE		1	
REF.		SPLACST_0094	