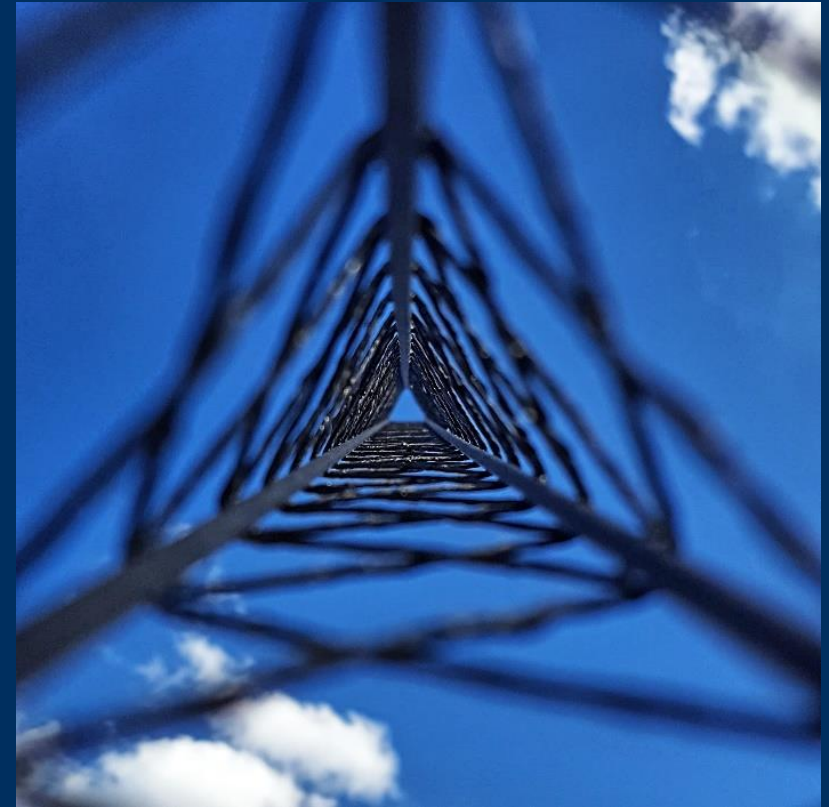




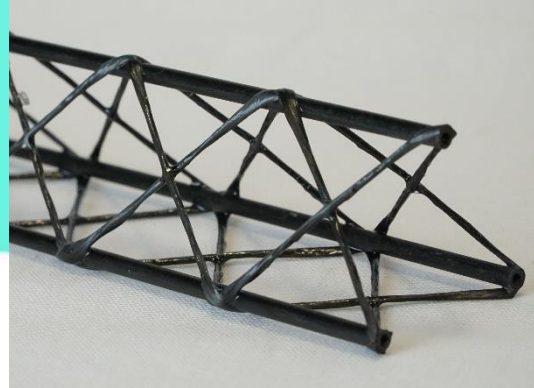
WrapToR Trusses

Progress to Date

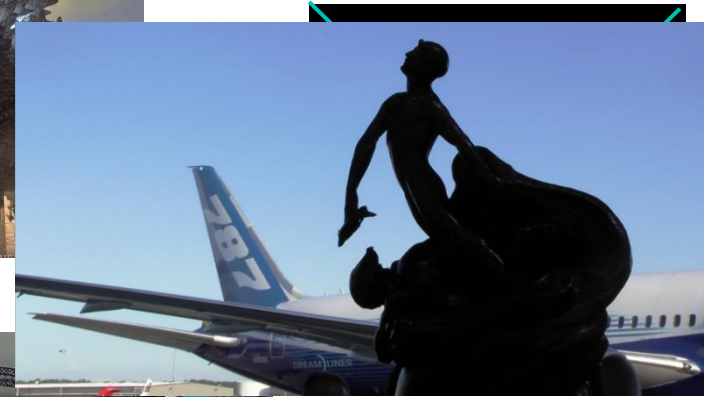
Benjamin King Sutton Woods
28/6/23



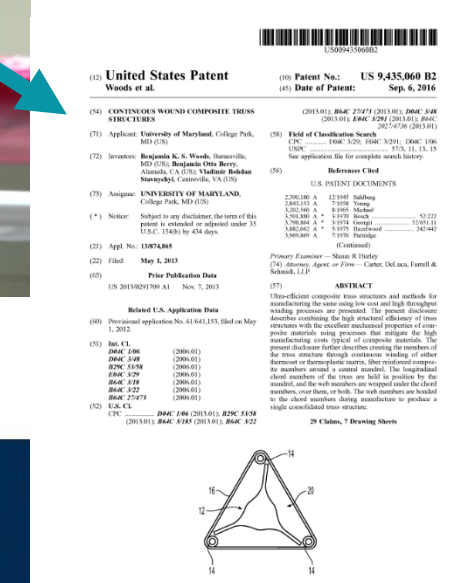
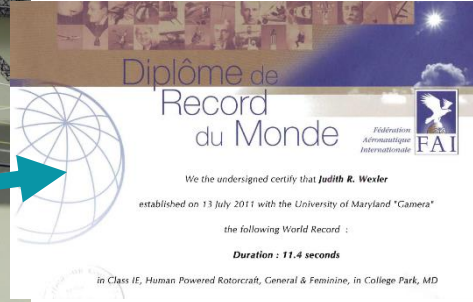
Wrapped Tow Reinforced Truss Structures



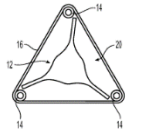
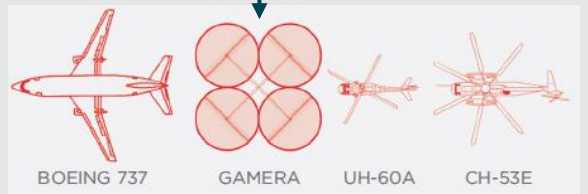
Origin Story: Gamera



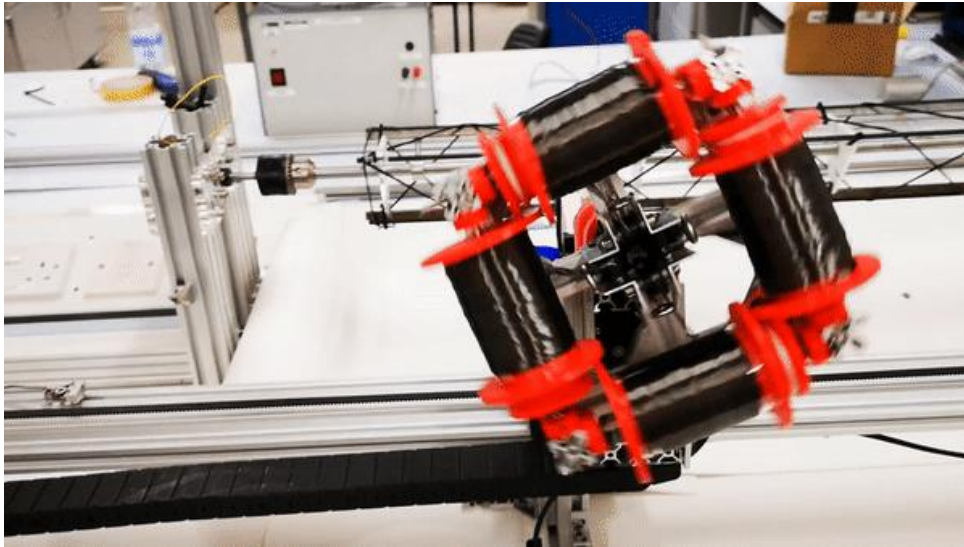
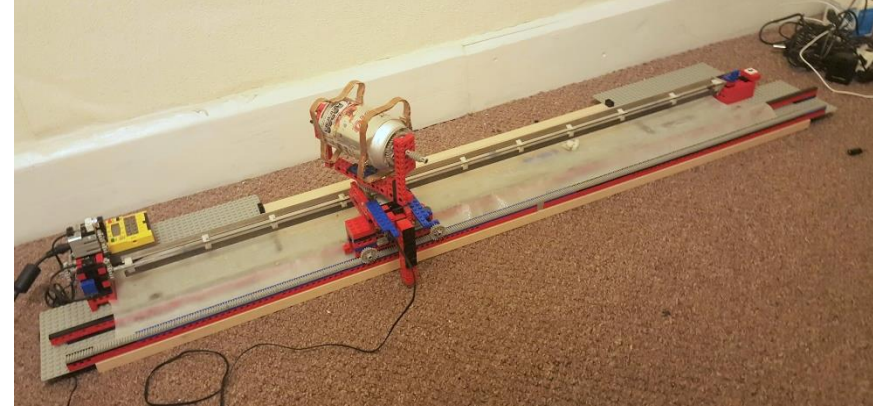
-33% mass



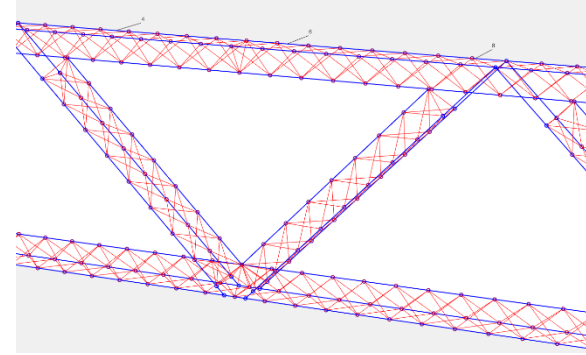
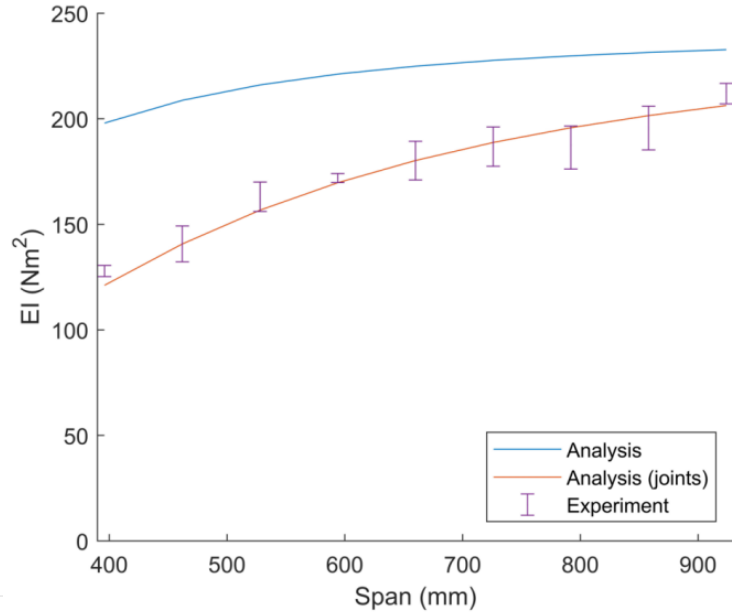
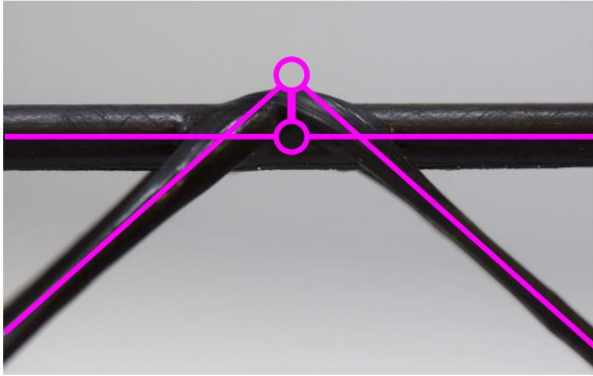
35 kg!



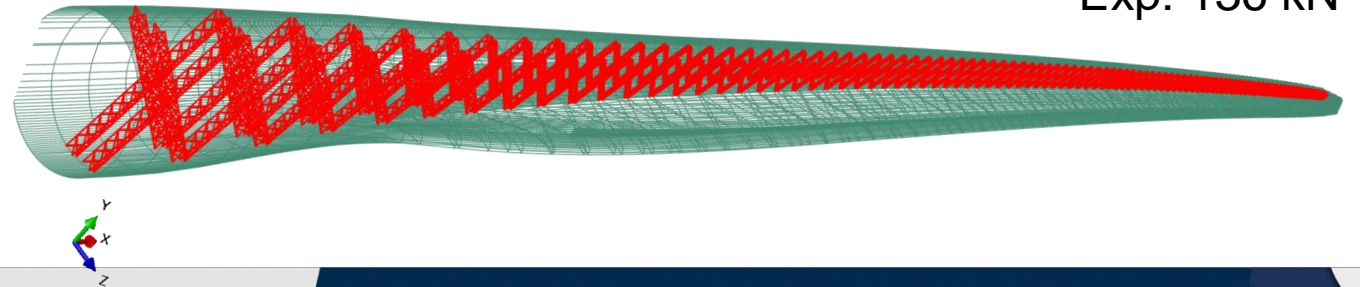
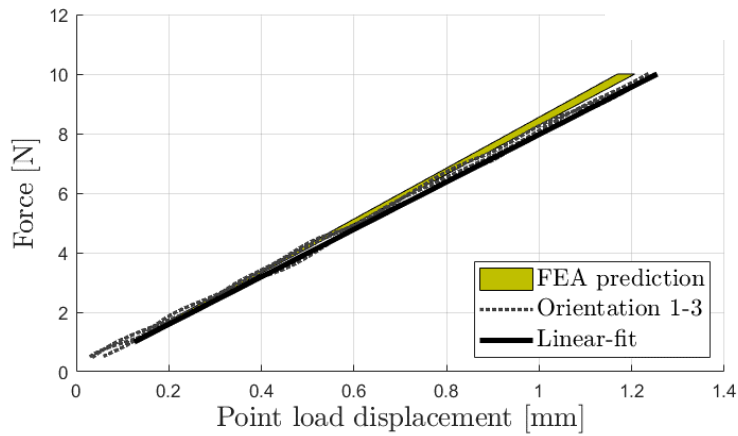
WrapToR Truss Beams – Manufacturing



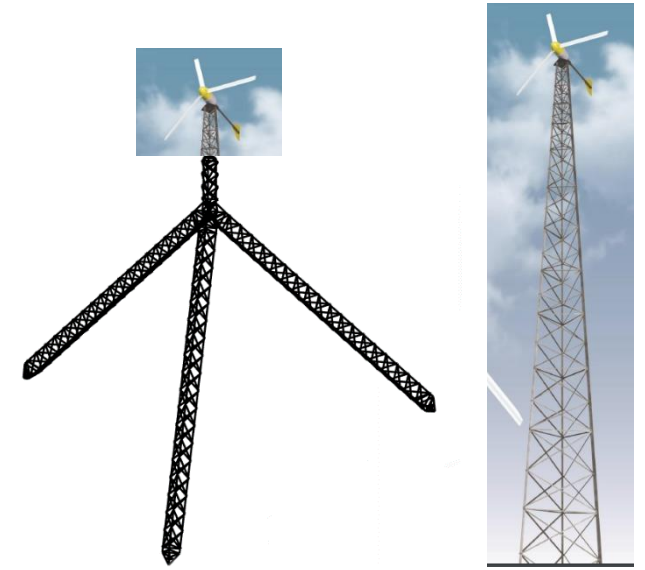
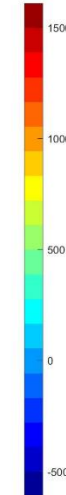
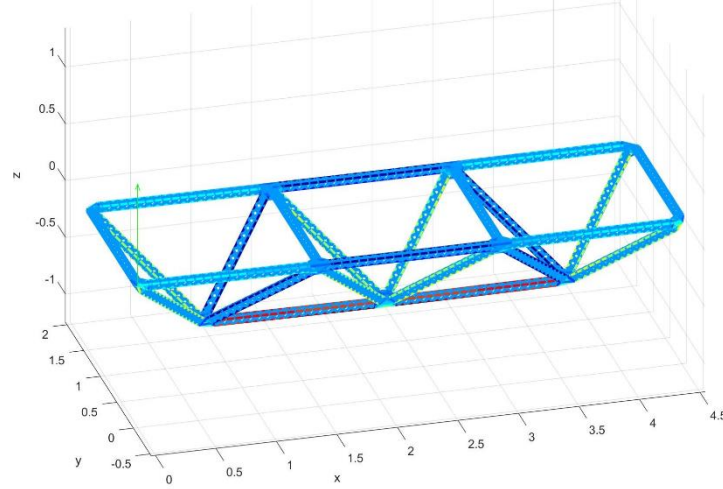
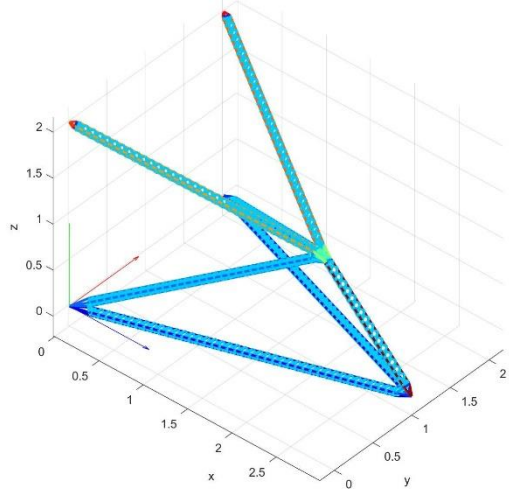
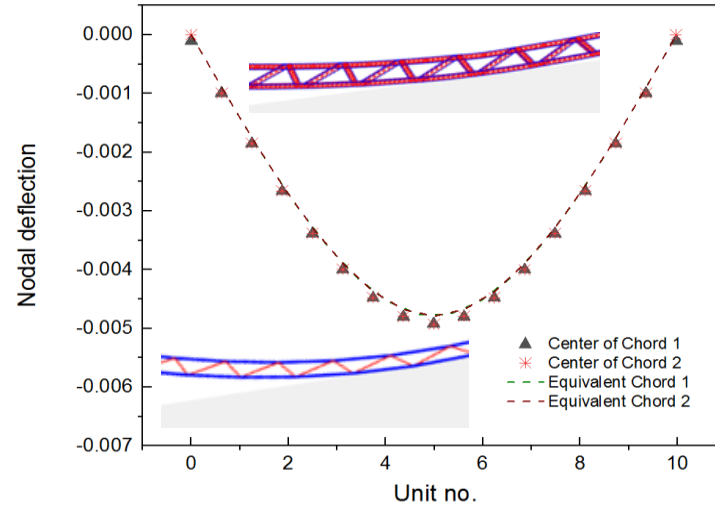
WrapToR Truss Analysis



FE: 131 kN
Exp: 136 kN

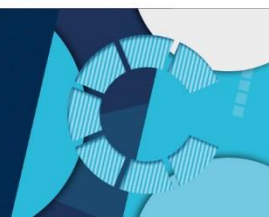
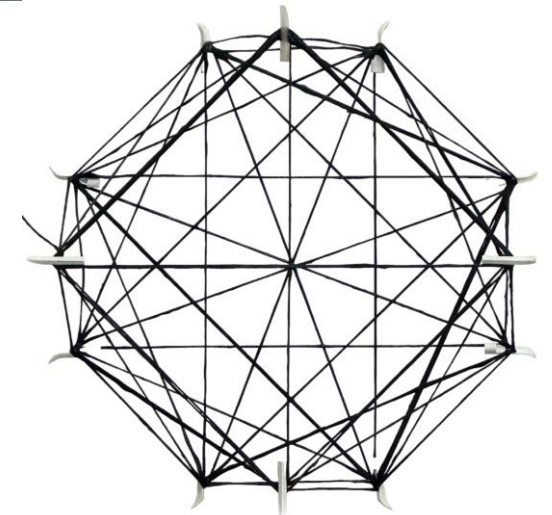
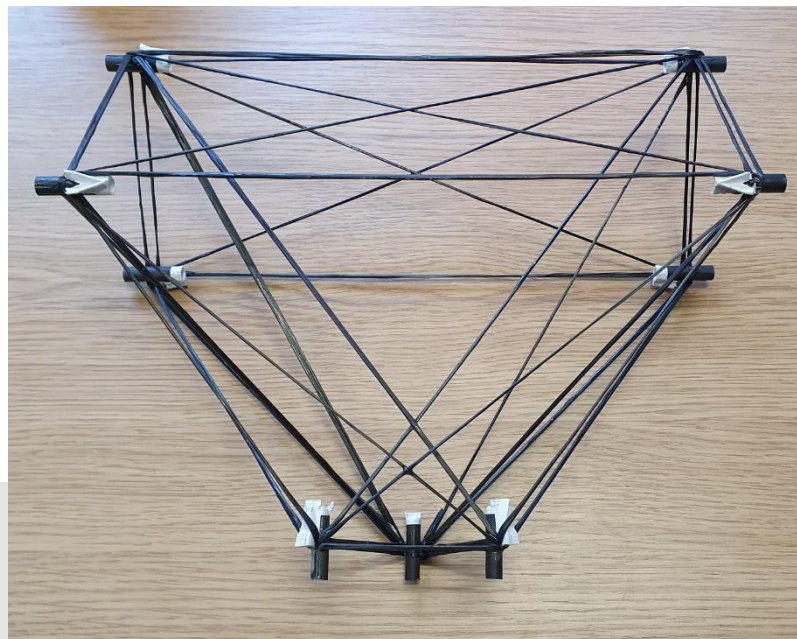
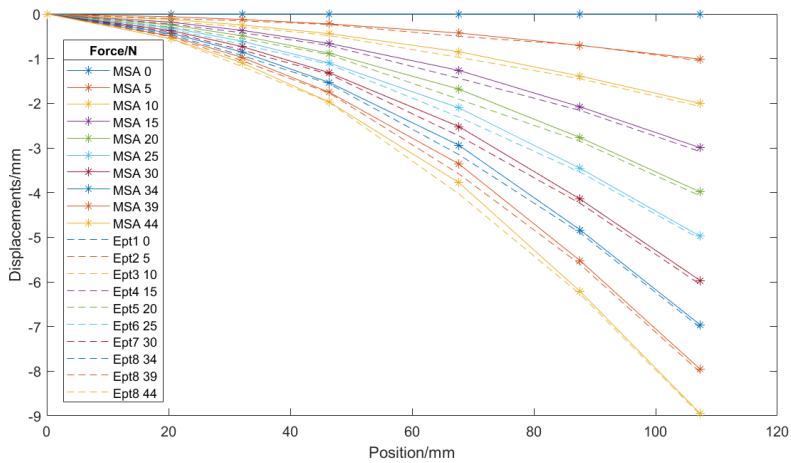
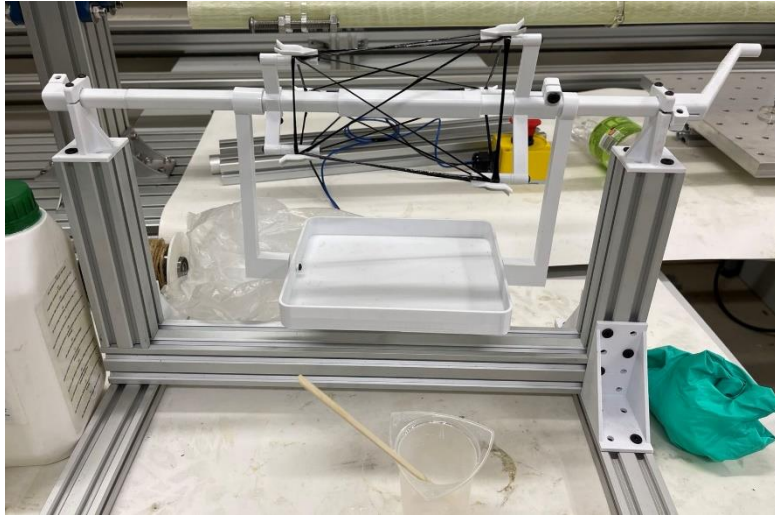


WrapToR Hierarchical Space Frames

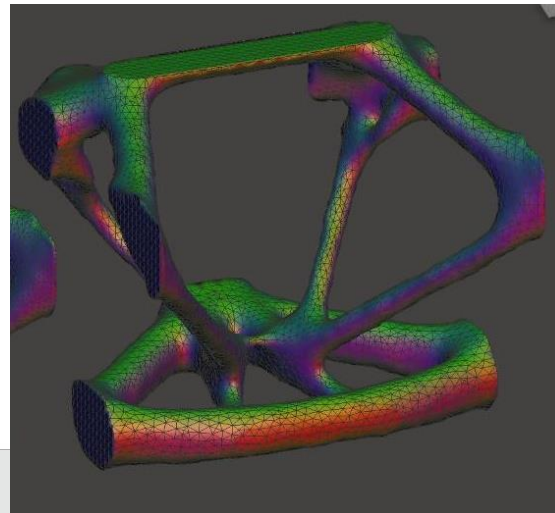
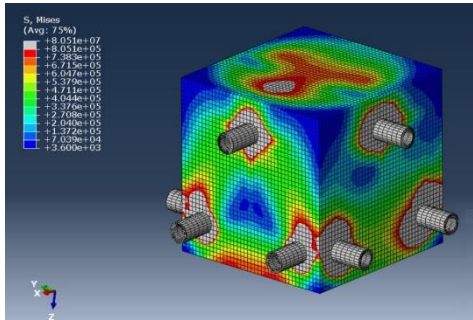
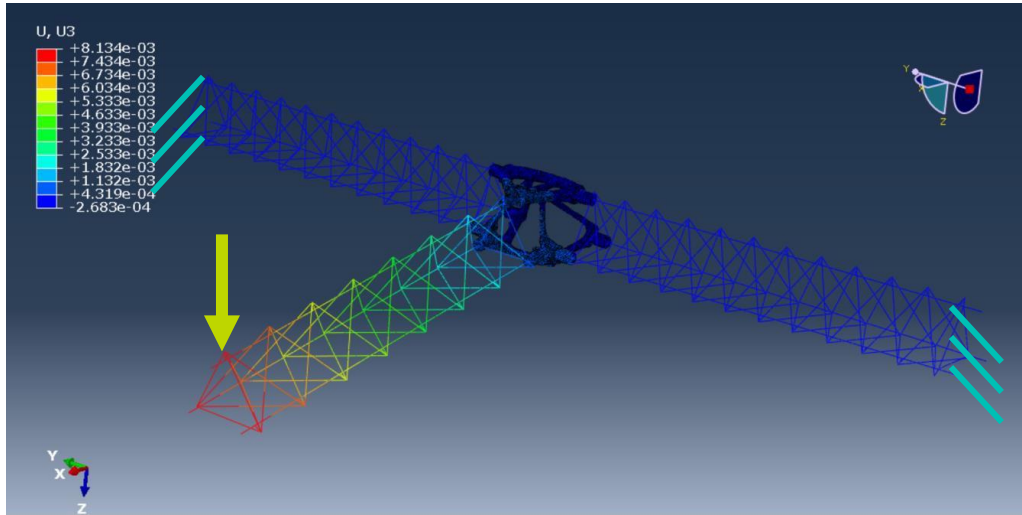


Small wind tower case study
60% mass reduction

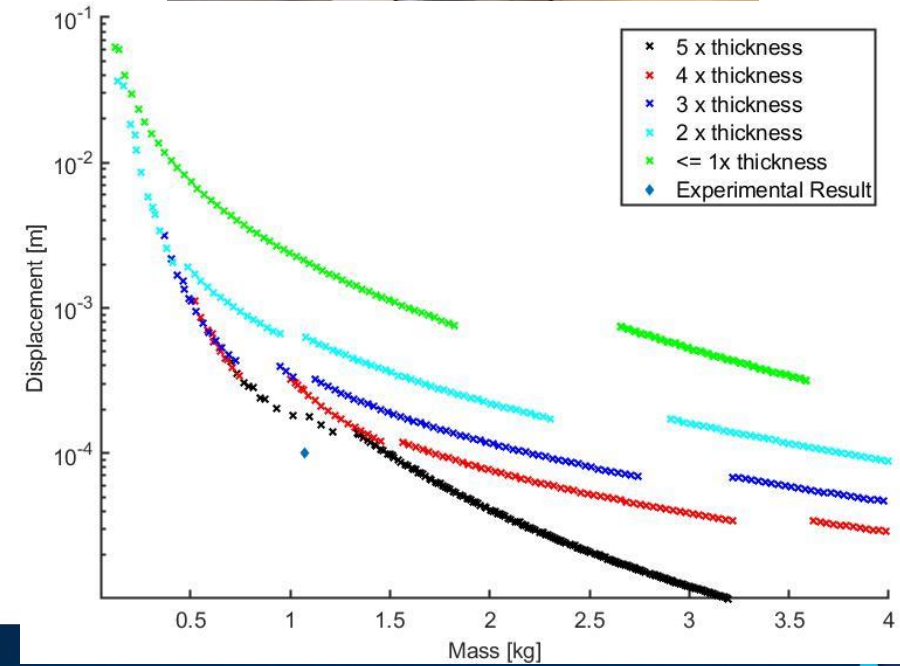
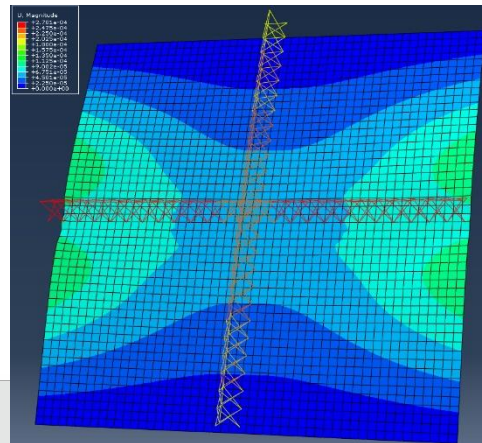
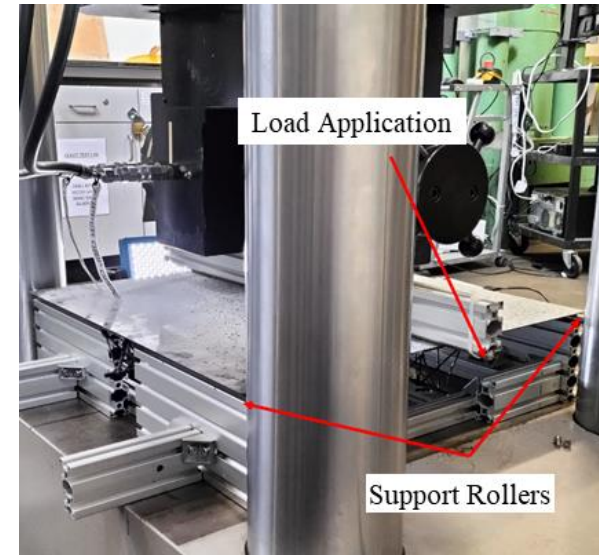
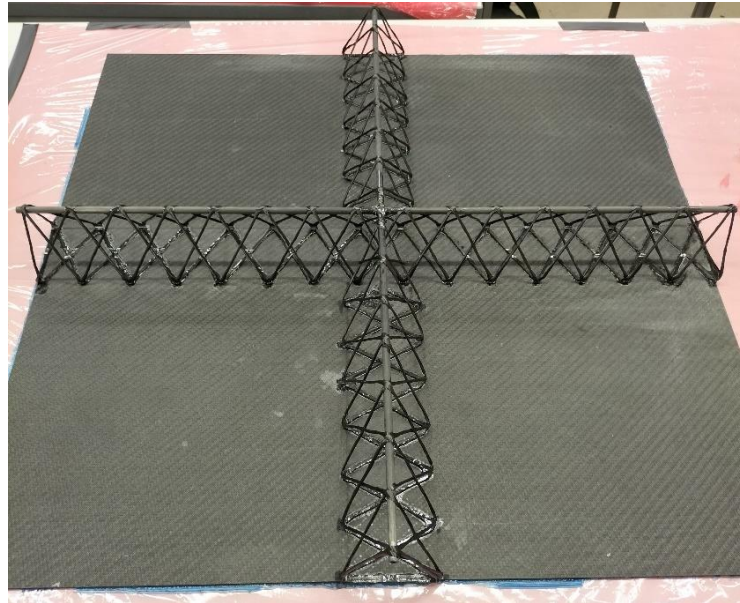
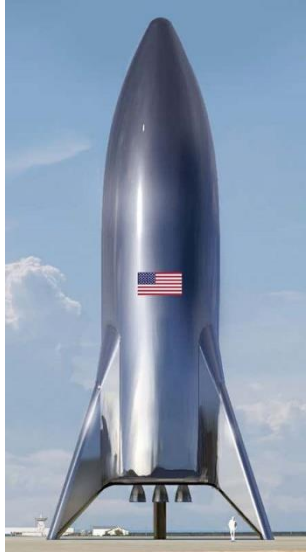
WrapToR Joints – Wound



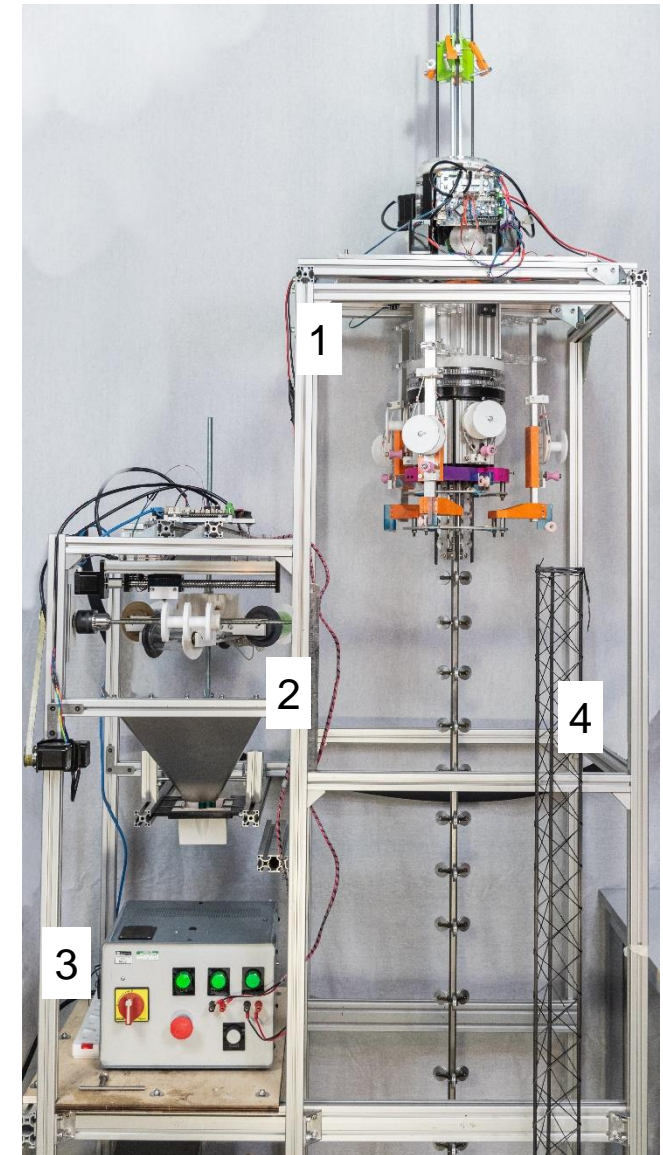
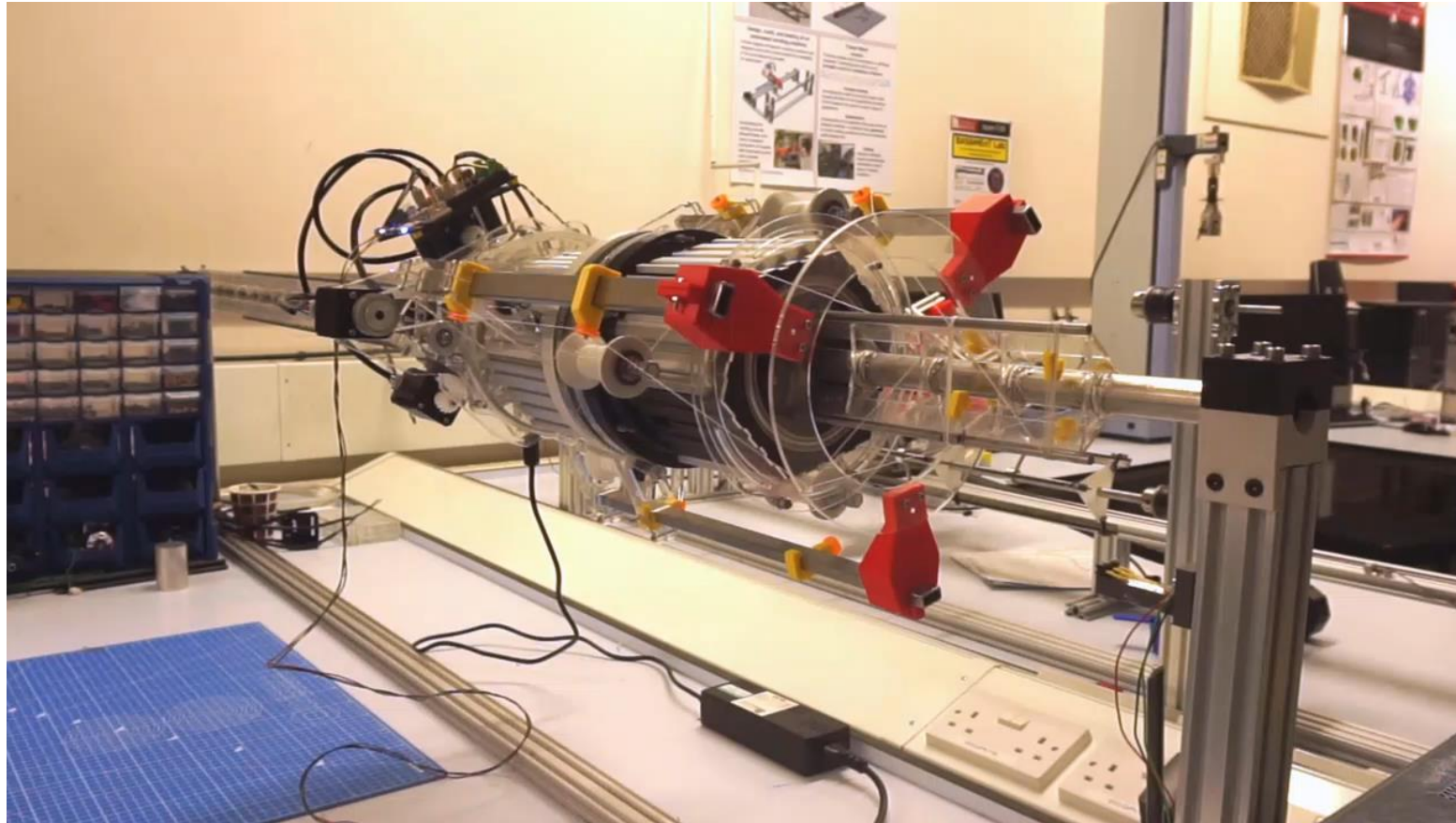
WrapToR Joints – Topology Optimised/Printed



WrapToR SHells



WrapToR Trusstrusion



The future?

WRAPTOR 2049



Thanks for your attention

ben.k.s.woods@bristol.ac.uk

bristol.ac.uk/composites

