



MERIT - Status of the Experiment

A. Fabich
CERN AB-ATB

MERIT safety review (3)

<http://cern.ch/merit>



Outline



- Status of the MERIT control room
- Status of experimental zone TT2A

- Schedule

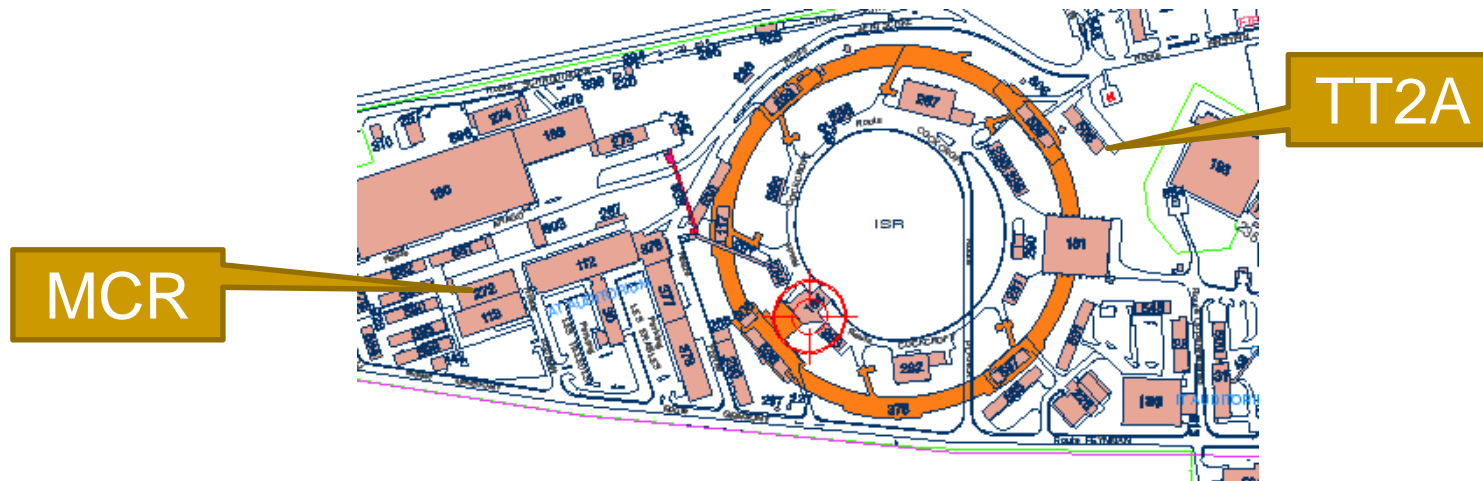
- Access of personnel and material to TT2/A from ISR
 - Access door D201
 - Installation during PS operation
 - Access door D202



MERIT control room



- Located in building 272
 - 272 S-002
 - Equipped with 12 Ethernet ports (currently 4 PCs installed and 2 portable outlets)



- Communicates with the experimental setup in TT2/A ONLY via Ethernet (no hard wires).



TT2A



- TT2A: Ready for goods reception.





Doors



- D201 for access
- D202 for emergency exit only
- Layout of access system by TS/CSE:
<https://edms.cern.ch/document/811612/1>



Access



For Personnel and small material via ISR

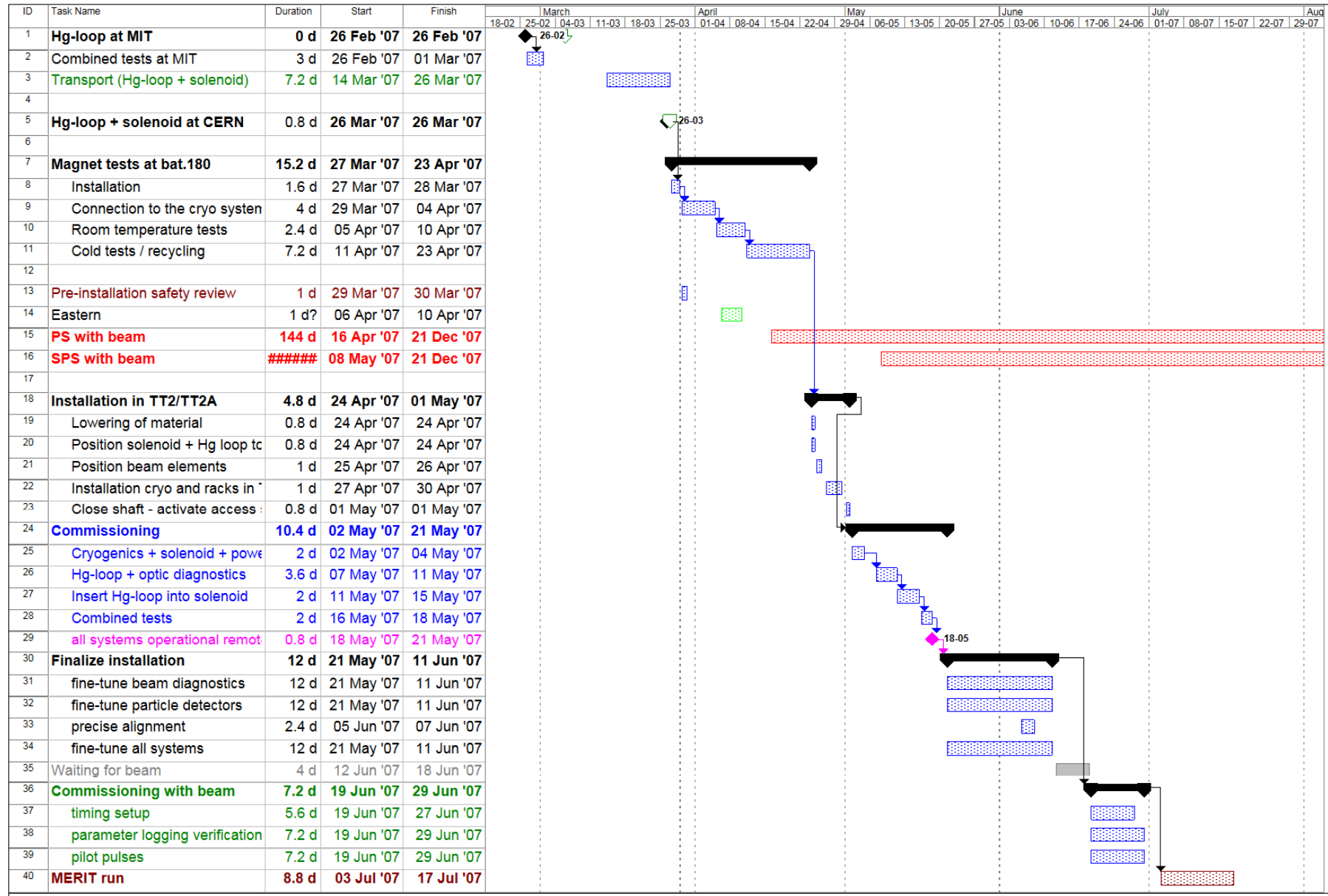


For heavy goods via the access pit





Schedule



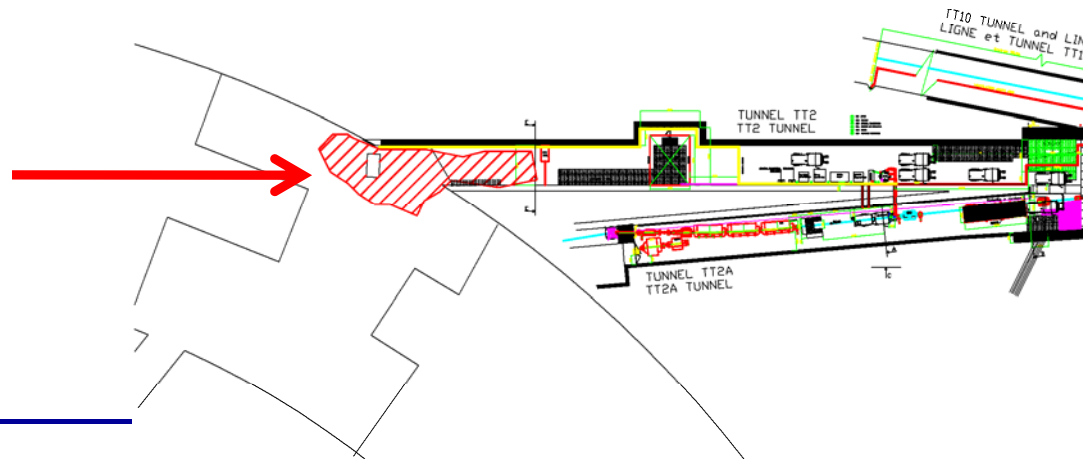


Access during PS operation



During PS operation

- Radiation monitor in the safety chain of PS operation.
- Extended “safety” area up to the ISR tunnel
 - Panels: Visual information for area with limited access
 - Ribbon: Indicating area limits
 - Film badge and electronic dosimeter obligatory
- For a limited time period.
- AB/OP is informed about the access to TT2A during PS operation. Access will be coordinated with beam operation.





Summary



- CERN site is prepared for installation and commissioning.
- Access to TT2A during PS operation is a remaining issue.
- Schedule is tight. MERIT will be ready for beam time in June/July.
- The MERIT collaboration thanks all people at CERN involved in the MERIT preparation for their support: TS/EL, AT/ECR, AB/ABP, AB/CO, AB/PO, TS/CE, AT/VAC, TS/IC, TS/CSE, AT/MEL, AB/ATB, AB/SU and safety commission