

A-X → Altiroc:

- 1-4: 10x10, 5x10, 5x5, hex, 50 $\mu$ m rad
- 4-8, 13-16: 5x5, orth, 55 $\mu$ m pixel pitch
- 9-12: 20x20, 10x20, 5x10, 5x5, hex, 30 $\mu$ m rad
- 17-24: 5x5, hex, 50 $\mu$ m rad
- 25-32: 5x5, hex, 30 $\mu$ m rad

M-X → Medipix: orth, 55x55 $\mu$ m

1-X → SC, orth, 55x55 $\mu$ m pixel pitch

2-X → SC, hex, 50 $\mu$ m rad

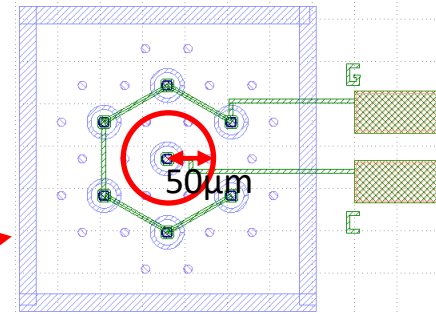
3-X → 100x100 pad, orth, 50x50 $\mu$ m pixel pitch

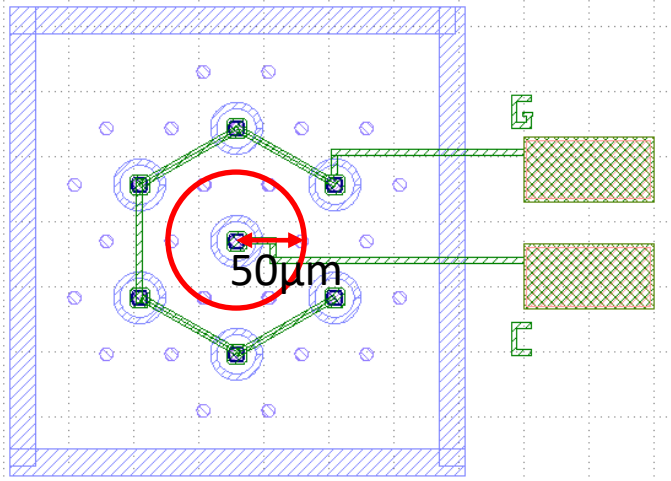
4-X → 5x5, hex, 30 $\mu$ m rad

5-X → 5x5, orth, 50x50 $\mu$ m pixel pitch

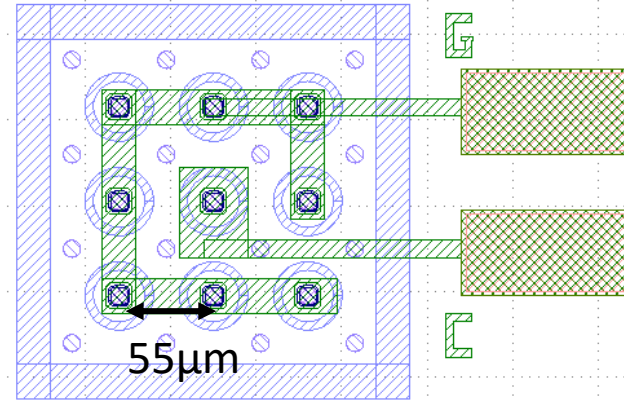
6-X → 10x10, orth, 50x50 $\mu$ m pixel pitch

7-X → 10x10, hex, 30 $\mu$ m rad

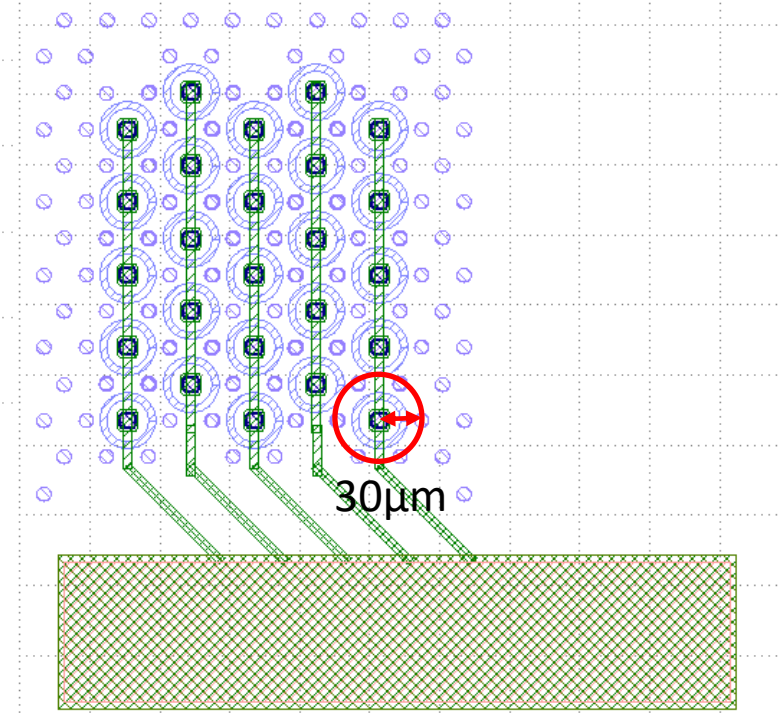




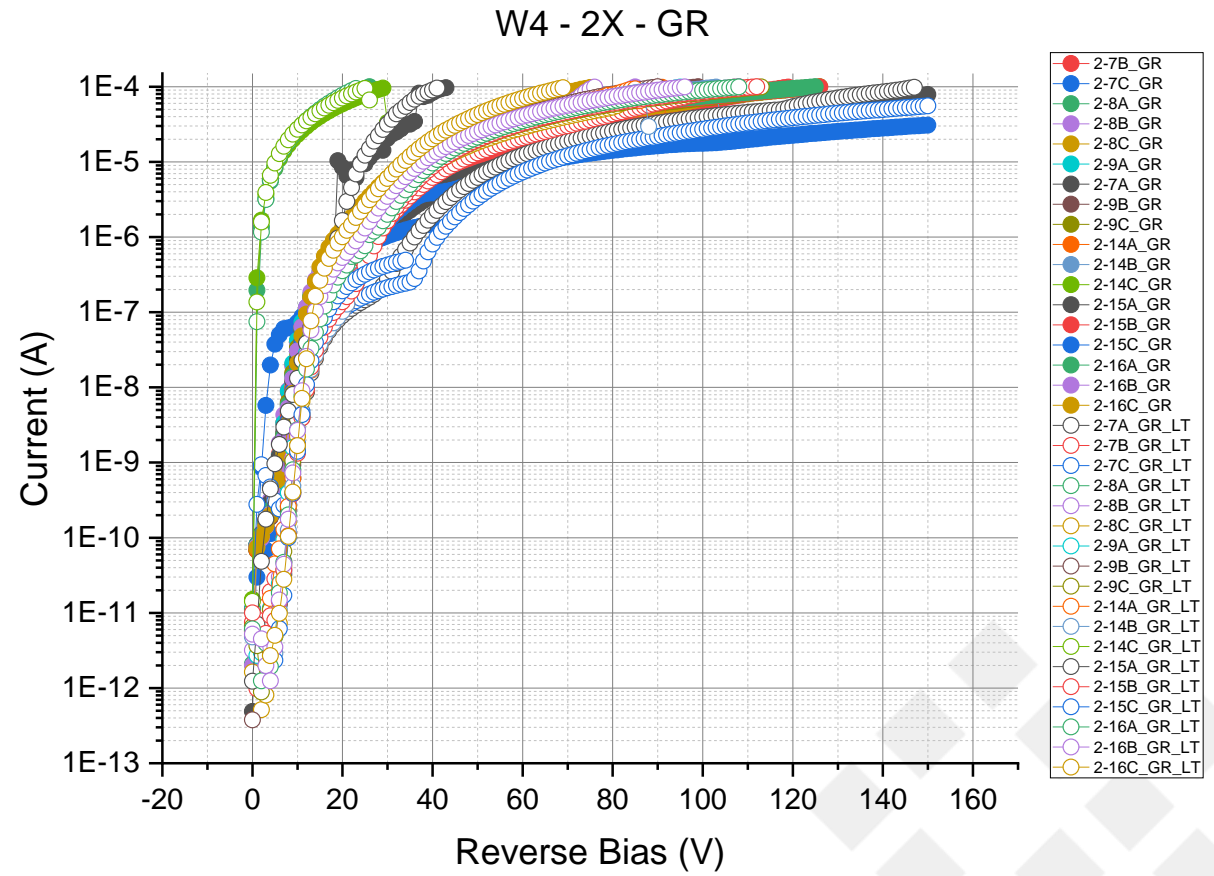
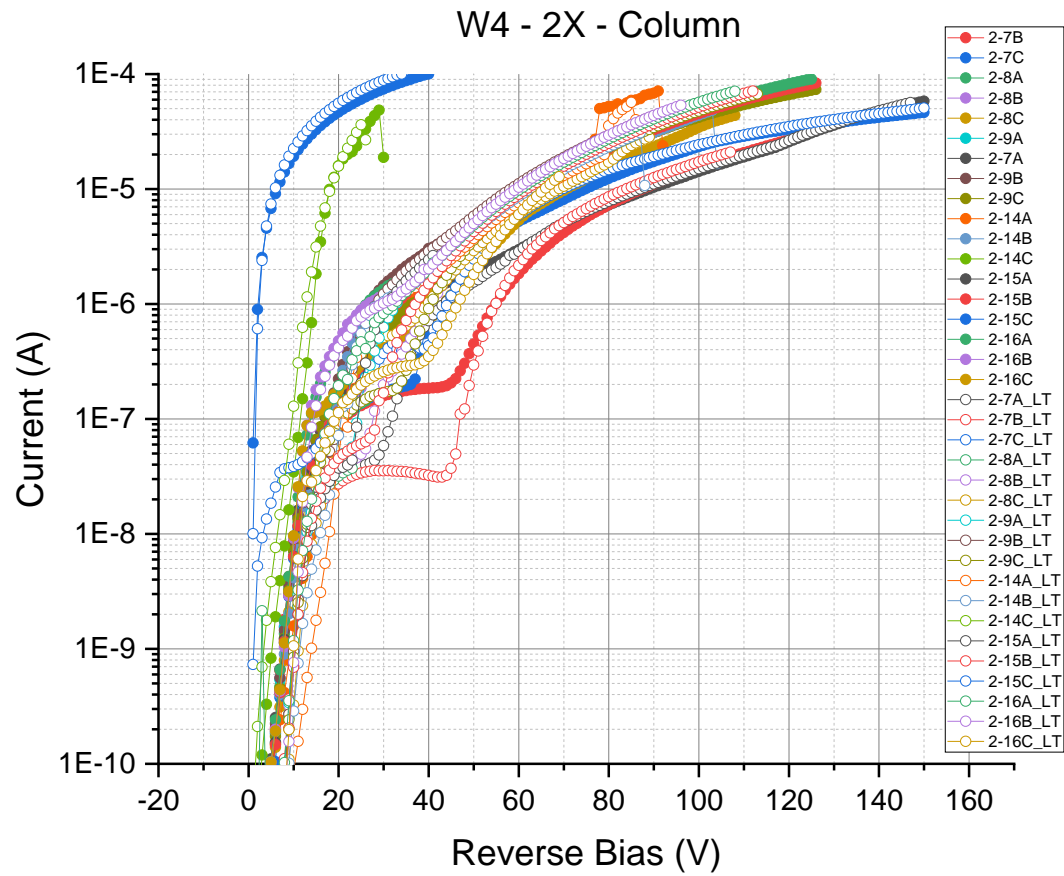
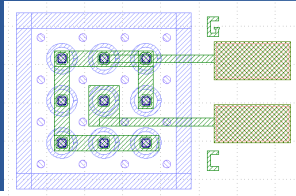
1-X → SC, hexagonal, 50µm rad



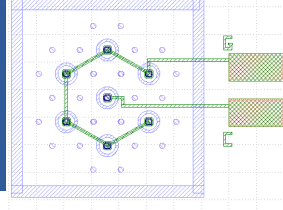
2-X → SC, orthogonal, 55µm pp



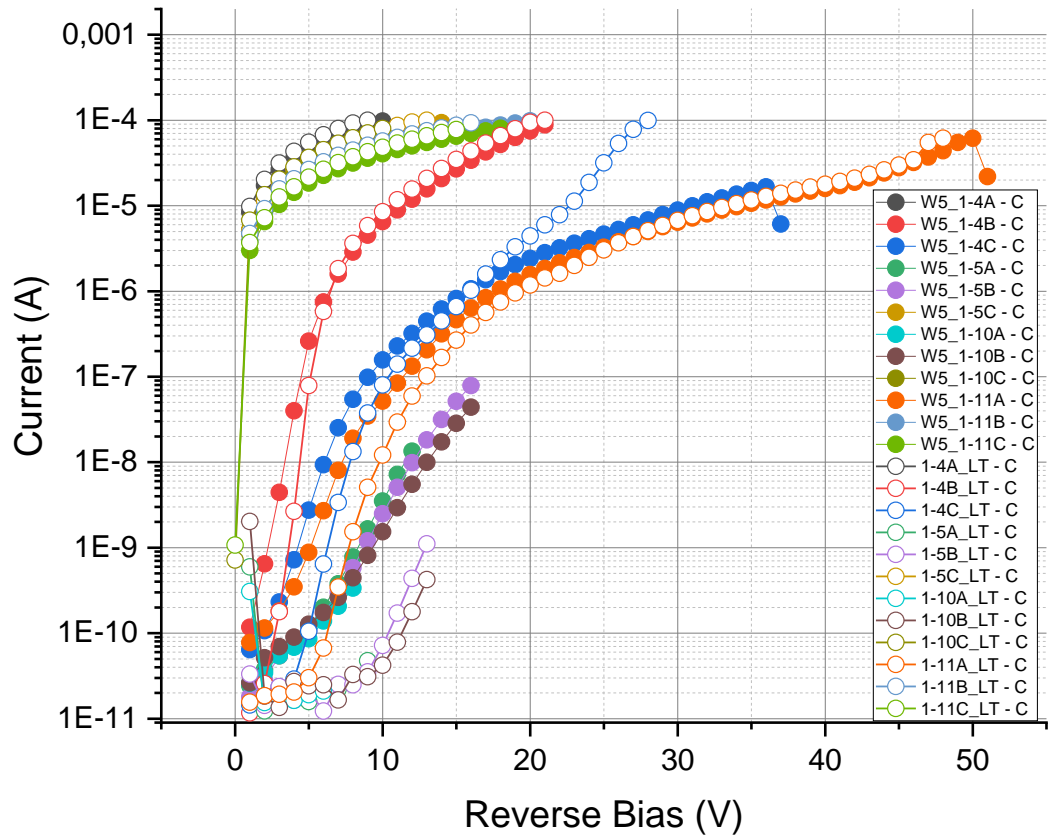
4-X → 5x5, hexagonal, 30µm rad







W5 - 1X - Column



W5 - 1X - Guard Ring

