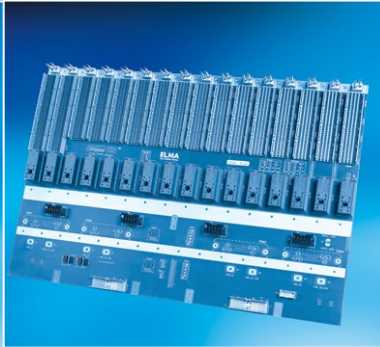


**50** years  
1960-2010

**Your Solution Partner**



# About Elma

## Elma in Brief

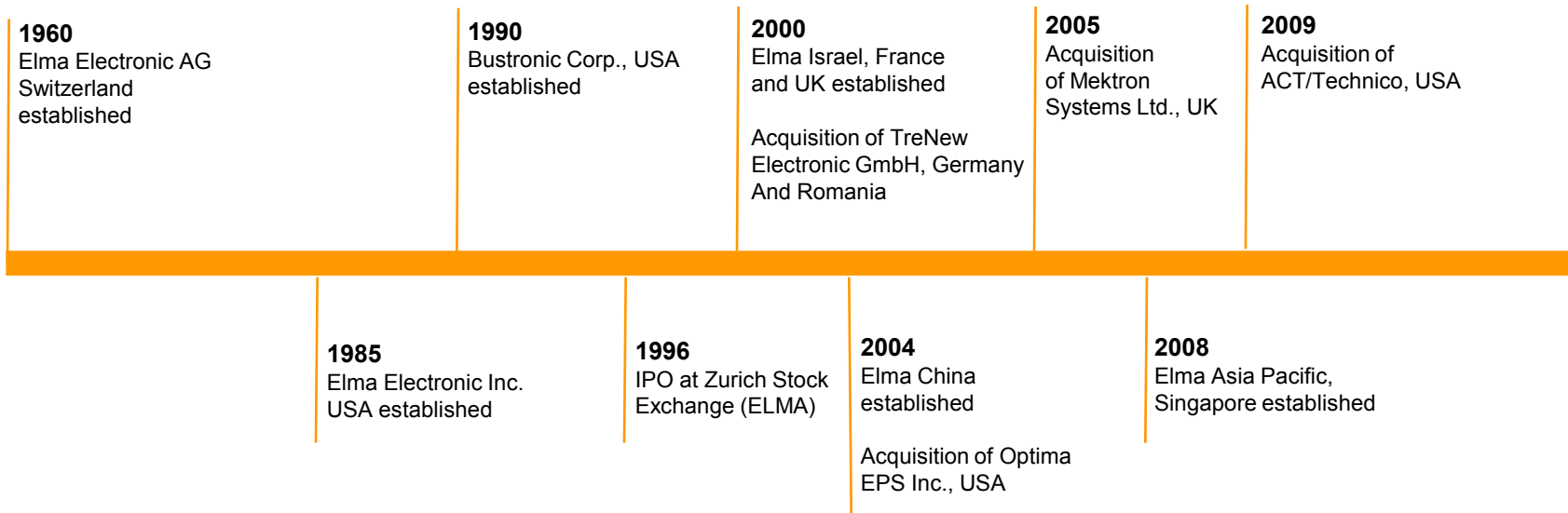


Elma is a leading global manufacturer of products of electronic packaging system solutions and high precision rotary switches for demanding applications

- Experience since 1960
- Facilities in 9 countries on 3 continents (Europe, America & Asia)
- Representatives in over 20 countries
- Approx. 750 employees worldwide

# About Elma

## Company History



# Elma Companies

## Your Partner. Worldwide.

**ELMA** 50 years  
1960-2010  
Your Solution Partner



- Developing and manufacturing countries
- Distribution partners

# Elma Companies

## Your Partner. Worldwide.

**ELMA** 50 years  
1960-2010  
Your Solution Partner



**Switzerland**  
Competence Center  
Enclosures, Switches



**USA**  
Competence Center  
Backplanes, Systems,  
Cabinets



**Germany**  
Competence Center  
Backplanes, Systems



**UK**  
Competence Center  
Systems



**France**



**Israel**



**China**



**Romania**



**Singapore**

# About Elma

## Product Applications



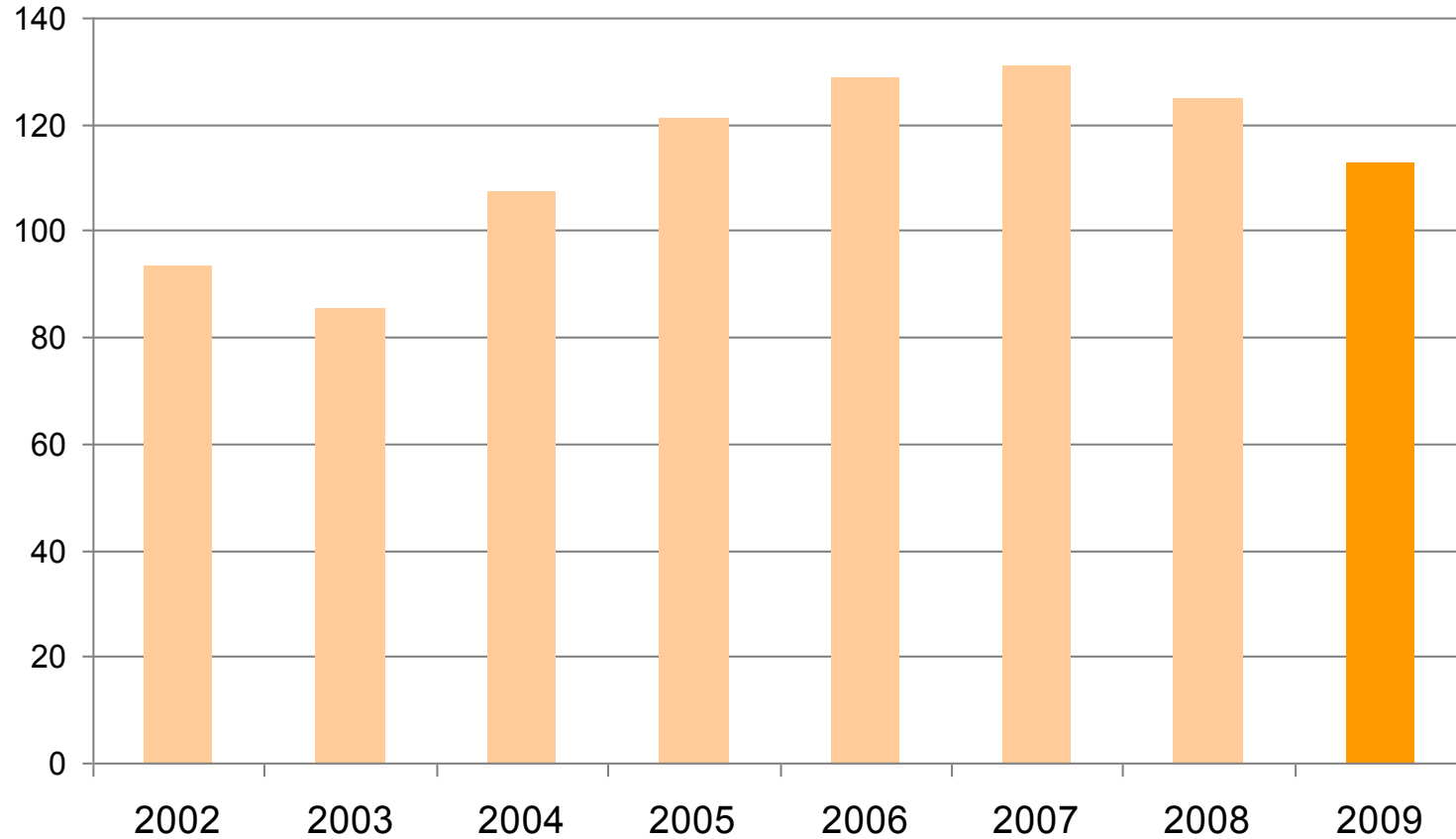
Military/Aerospace  
Communications  
Transportation

Scientific/Education  
Instrumentation  
Medical

Industrial  
Broadcast/Audio  
IT/Data Center

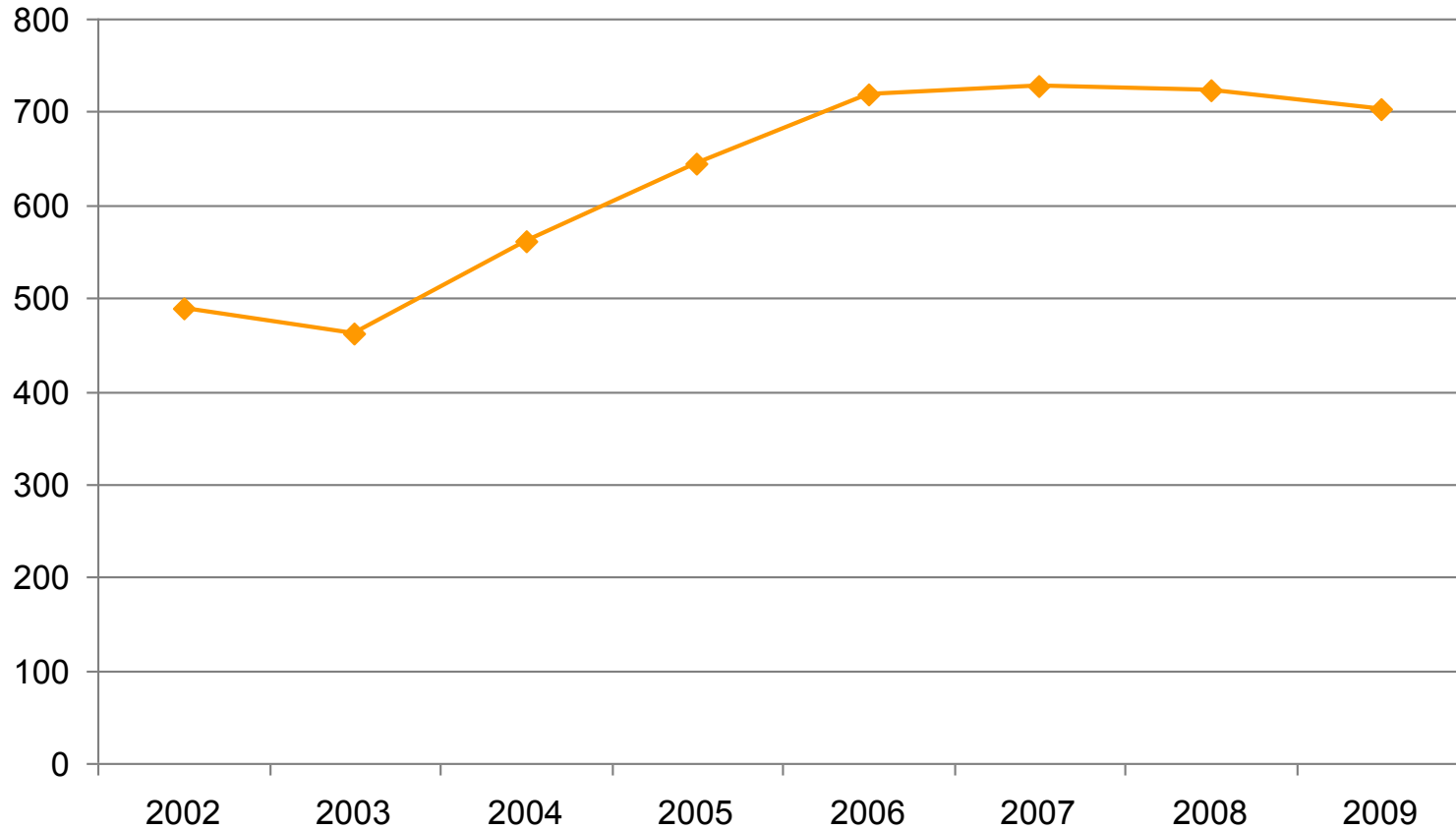
# Elma Summary

## Turnover in Mio. CHF



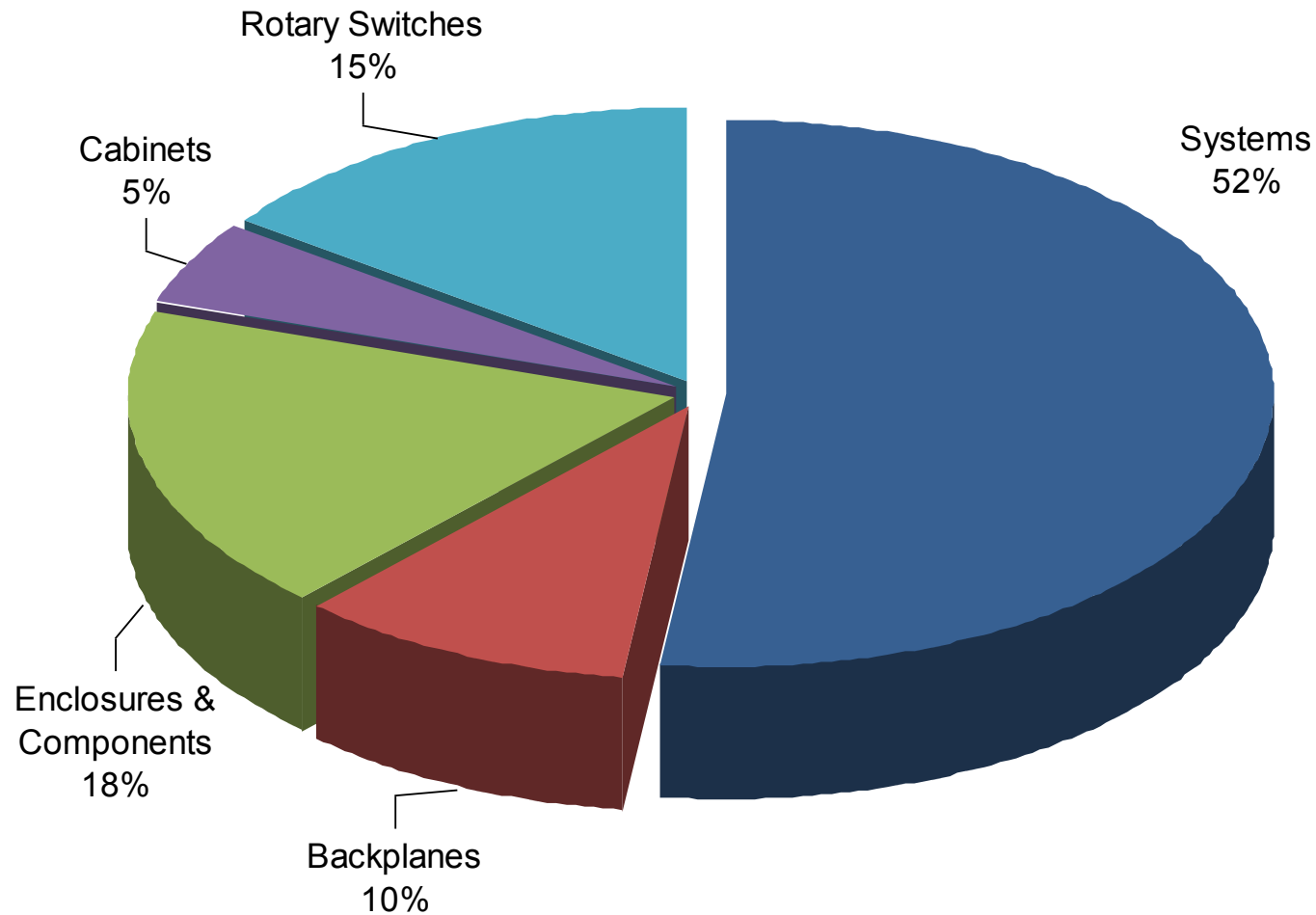
# Elma Summary

## Change of Employees

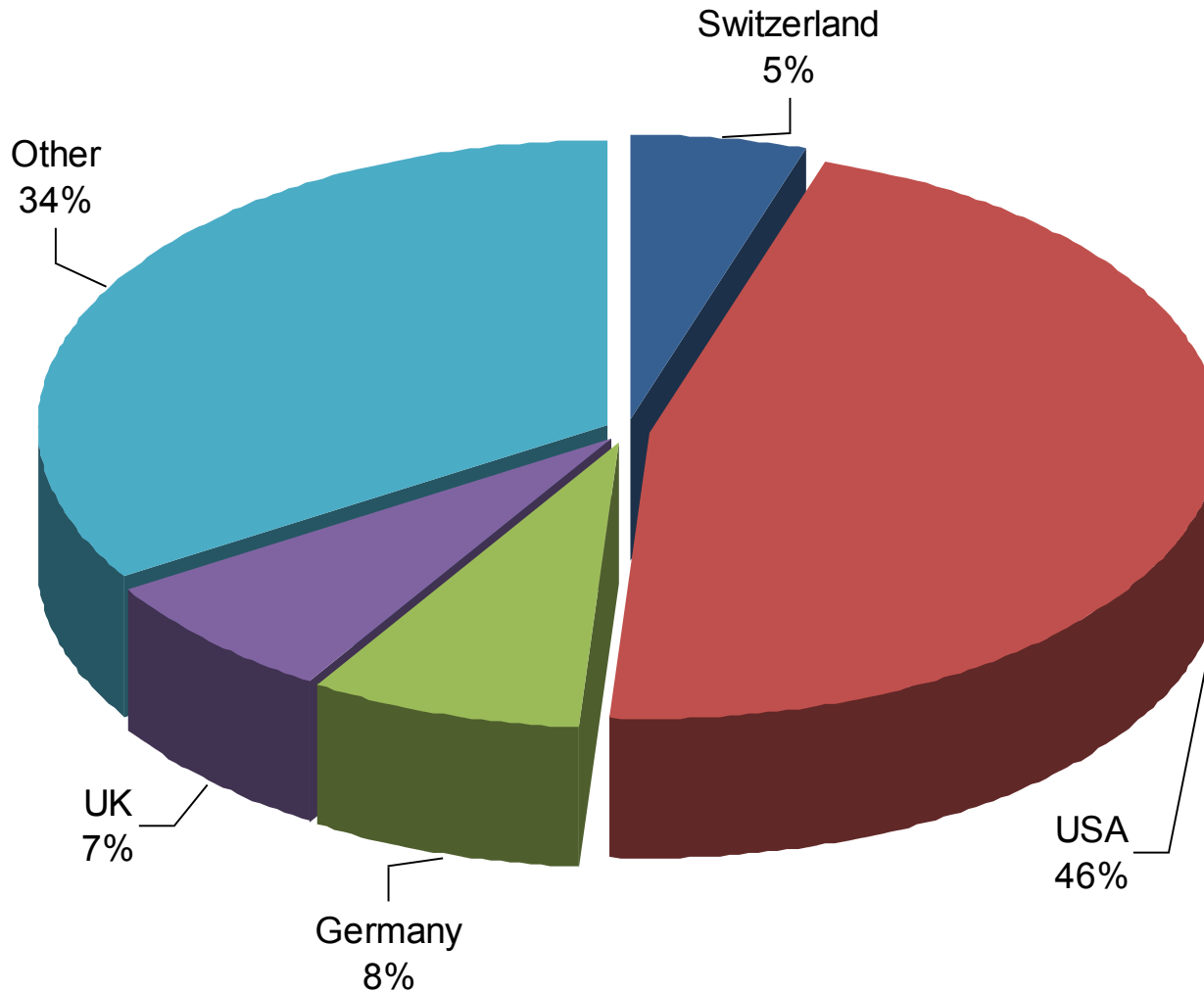




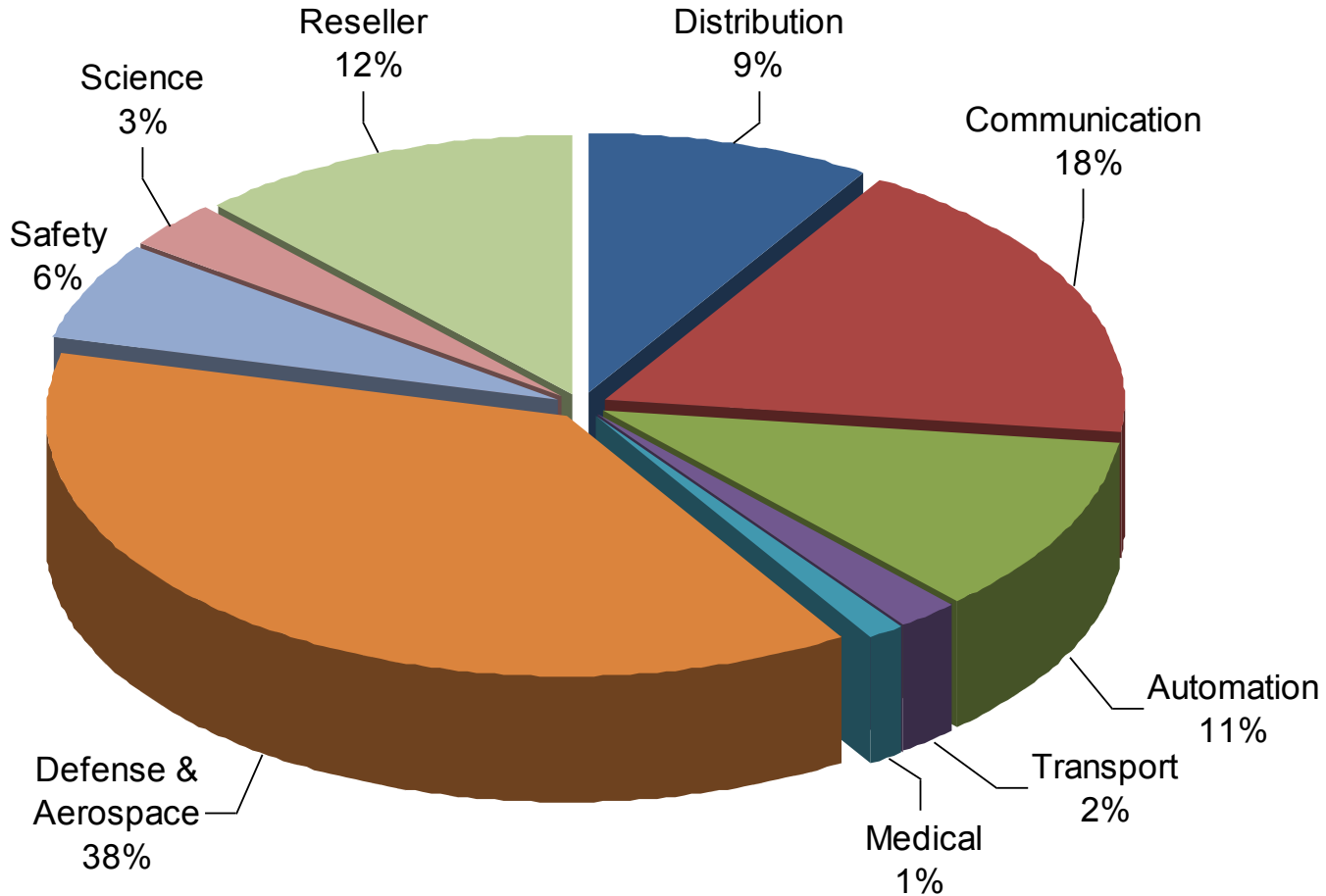
# Summary per Product Line Based on turnover in 2009



# Summary per Region Based on turnover in 2009



# Summary per Customer Segment Based on turnover in 2009



# About Elma

## Why choose Elma

- **Experience**

Extensive practical experience in packaging electronic systems is used to minimise the time taken to develop new customised solutions without compromising system performance or reliability.

- **Flexibility**

Elma tailors solutions to individual applications to ensure fast and cost-effective results.

- **Compatibility**

Because the two key electromechanical components – enclosures and backplanes – are made in-house, Elma guarantees compatibility, consistency and reliability.

- **Global Network**

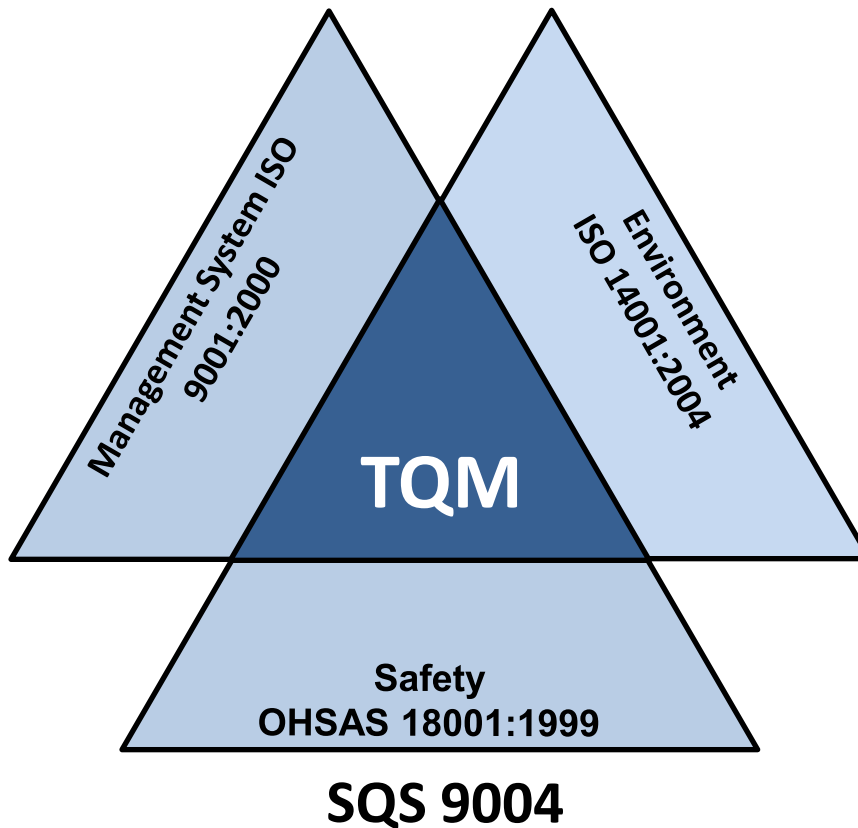
With manufacturing in Europe, the US and Asia, customers benefit from local service, backed by global resources.

### Your Solution Partner



# Elma Switzerland

## Total Quality Management



Our TQM (Total Quality Management) describes the company's processes, shows the implementation of ISO-norms and demands of our industry sector. Further it refers to operative instructions in the practice and constant improvement as well as the co-operation of all employees, customers, suppliers and other partners.

### **Environment**

We avoid environmental pollution and waists of all types and encourage all actions to a sensible conservation of nature and natural resources.

### **Safety**

We are aware of dangers and risks that come with the daily business and consider all precautions. In case of events we give the necessary assistance.

Inspection is made as close to the manufacturing point as possible as this allows two way information. Inspection takes place at the manufacturing phase in the form of:

- Pattern inspection
- First/last article inspection
- Goods inward test acceptance inspection
- In process inspection (e.g.. automated inspections, process monitoring)
- Introspectiveness
- Ongoing inspections
- Final inspections

# Elma Switzerland Certification



**SQS** **Certificate**

SQS herewith certifies that the company named below has a management system which meets the requirements of the normative bases specified below.

**ELMA** **Elma Electronic AG**  
Your Solution Partner **CH-8620 Wetzikon ZH**

**Certified area**

Total Quality Management including all strategic and operating sites

**Field of activity**

Development, production and sales of sub-racks, cases, cabinets, industrial PC's, basic systems, accessories for 19" systems, switches, knobs and LED's

**Normative bases**

**ISO 9001:2000** Quality Management System  
**ISO 14001:2004** Environmental Management System  
**OHSAS 18001:1999** Occupational Health and Safety Management System

Swiss Association for Quality and Management Systems SQS  
Blenzstrasse 103, CH-3052 Zollikofen  
Issue date: September 20, 2007

This SQS Certificate is valid up to and including September 19, 2010  
Scope number 17  
Registration number 20991

*V. Edelmann*  
X. Edelmann, President SQS

*T. Zahner*  
T. Zahner, Managing Director SQS

**IQNet**  
THE INTERNATIONAL CERTIFICATION NETWORK  
**CERTIFICATE**

IQNet and SQS hereby certify that the organization

**Elma Electronic AG**  
**CH-8620 Wetzikon ZH**

**Certified area**

**Total Quality Management including all strategic and operating sites**

**Field of activity**

Development, production and sales of sub-racks, cases, cabinets, industrial PC's, basic systems, accessories for 19" systems, switches, knobs and LED's

has implemented and maintains a Management System which fulfills the requirements of the following standards

**ISO 9001:2000 / ISO 14001:2004 / OHSAS 18001:1999**

Scope No: 17  
Issued on: 2007-09-20  
Validity date: 2010-09-19  
Registration Number: CH-20991

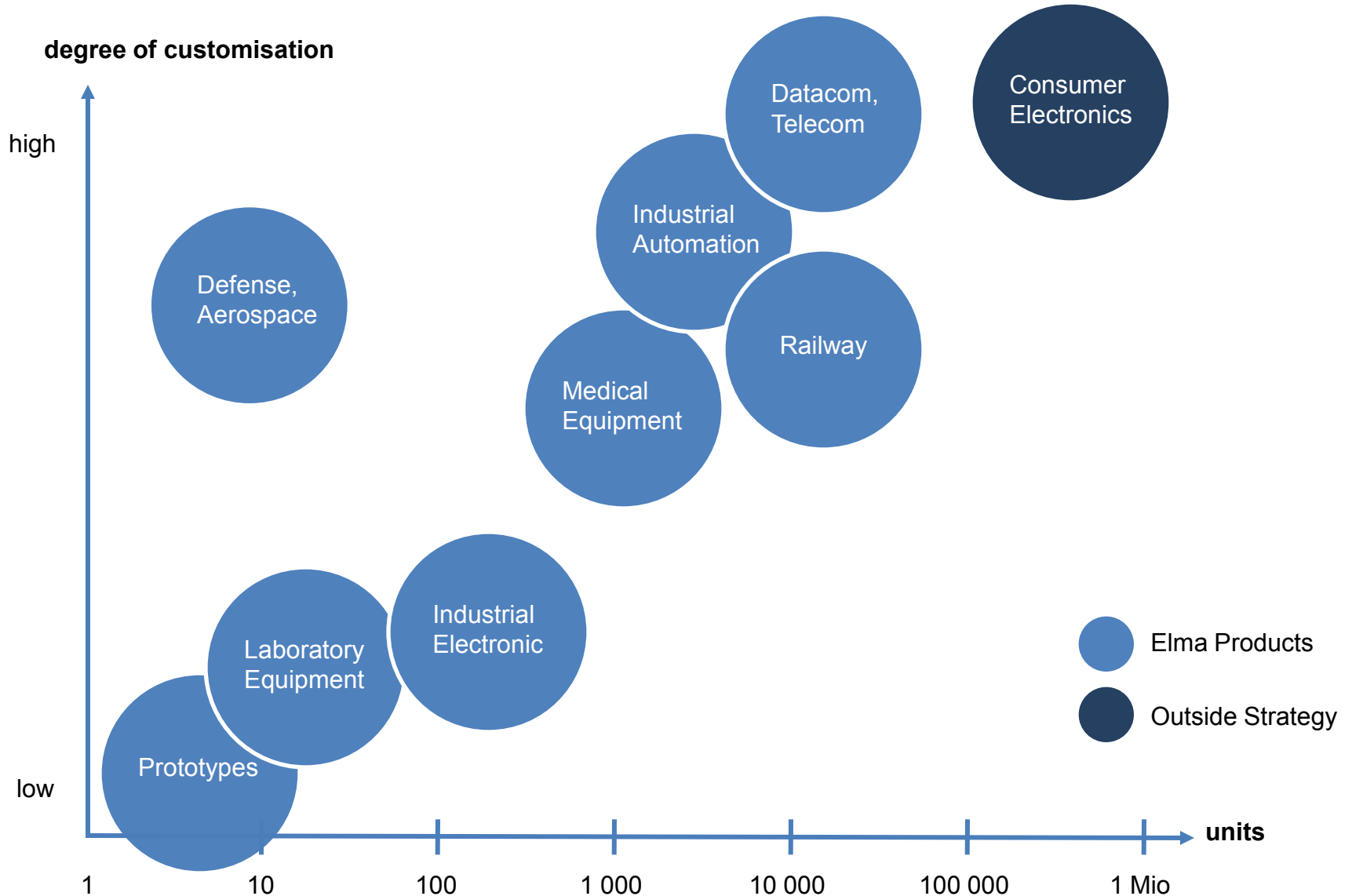
*René Wismer*  
René Wismer  
President of IQNet

*Theodor Zahner*  
Theodor Zahner  
Managing Director SQS

IQNet Partners:  
AENOR Spain AFHQ AFNOR France AIB-Systems International Belgium ANCE Mexico APCER Portugal CRIQ Italy CQC China CQM China CQS Czech Republic Cas Cert Croatia DQS Germany DSZ Denmark ELOT Greece FCV Brazil FONDOR/PERMA Venezuela IRCA/NA Biring Energy China IBC/ITC Calabarcan IBCAC Mexico Inspector Certification Finland IRAM Argentina IKA Japan KQC Korea MSZ Hungary NABCO AS Sarawak NSAI Ireland PCPC Poland QMI Canada Quality Assuris Australia RB Bureau SAI Global Australia SB Group SQJ Slovenia SIBTA QMS International Malaysia SQS Switzerland SRAC Romania TEST St Petersburg Russia YUQS Serbia

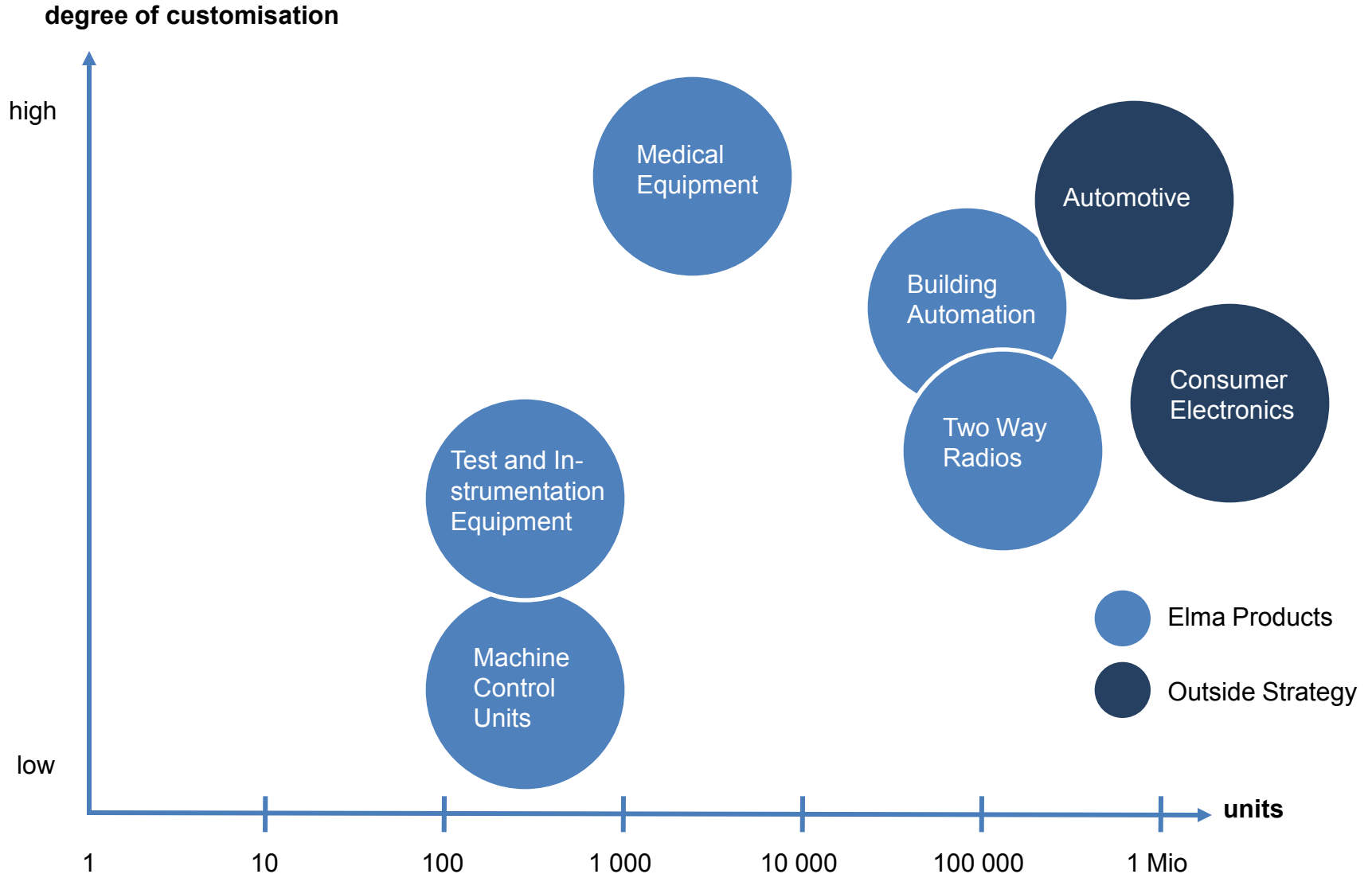
IQNet is represented in the USA by: AFNOR AFNOR, AIB-Systems International, CRIQ, DQS, NSAI Inc., QMI and SAI Global.  
\* The list of IQNet partners is valid at the time of issue of this certificate. Updated information is available under [www.iqnet-certification.com](http://www.iqnet-certification.com)

# Customer Segments Electronic Packaging





# Customer Segments Rotary Switches



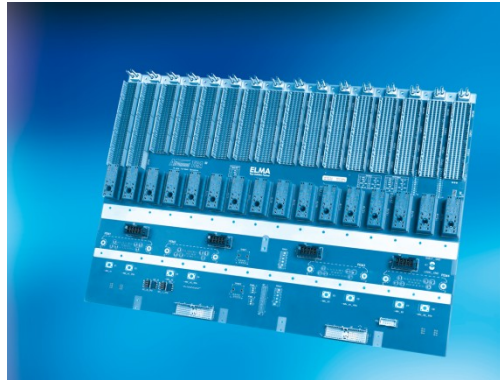
# Product Overview

## Elma Product Lines

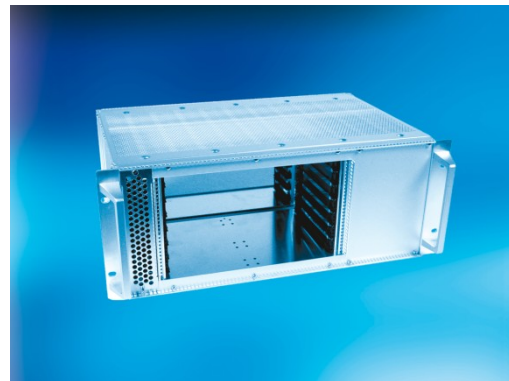
### Electronic Packaging



System Platforms



Backplanes



Enclosures & Components



Cabinets

### Rotary Switches



Rotary Switches

# System Platforms

## Products & Technologies

- Broad Range of Products:
  - MicroTCA
  - AdvancedTCA
  - CompactPCI, PICMG 2.16
  - VME/VME64x, VITA 31.1
  - VXS, VPX
  - PXI/VXI
  
- Design Capabilities for:
  - Modified Standards
  - Customised Solutions



# System Platforms

## Rugged Enclosures

- ATR, rack-mount, and custom designs
- ARINC 404A and ARINC 600
- MIL-STD-810 for demanding environments
- Full EMC compliance
  
- Specialised Skills:
  - Emphasis on thermal management
  - Convection, indirect convection cooled
  - Conduction and liquid cooled
  - All bus architectures supported



# Product Overview

## Elma Product Lines

### Electronic Packaging



System Platforms



Backplanes



Enclosures & Components



Cabinets

### Rotary Switches

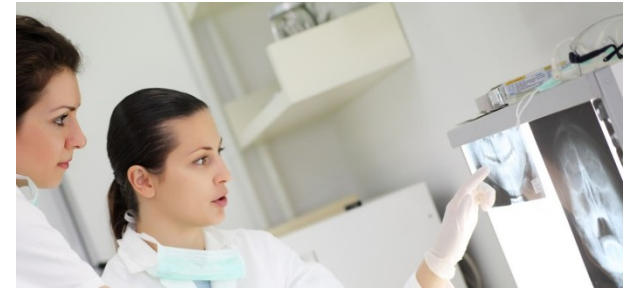


Rotary Switches

# Backplanes

## Product Features

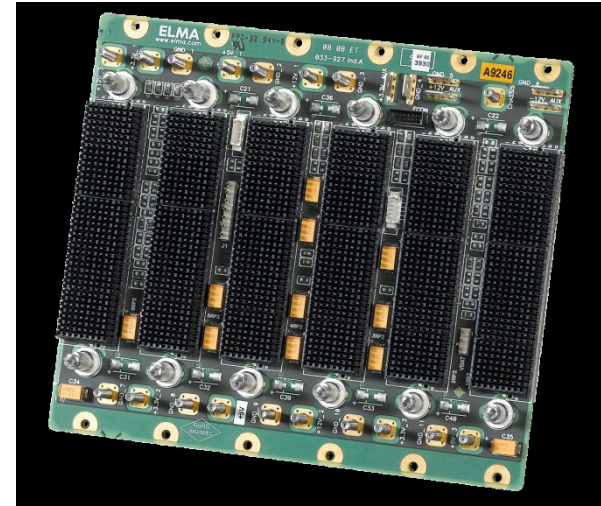
- Speed
  - Avionic instrumentation
  - Weapon management system
  - Vehicle control system
- Reliability
  - Robotics
  - Telecommunication
  - Computer tomography
- Availability
  - Infrastructure network management
  - Synchrotron



# Backplanes

## Products & Technologies

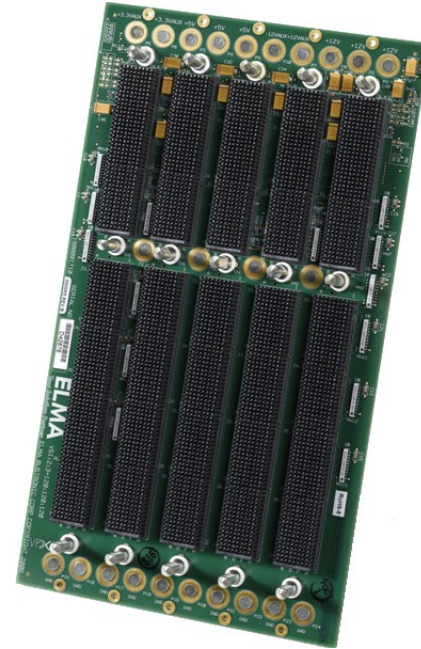
- Broad Range of Products:
  - MicroTCA
  - AdvancedTCA
  - CompactPCI, PICMG 2.16
  - VME/VME64x, VITA 31.1
  - VXS, VPX
  - PXI/VXI
  
- Design Capabilities for:
  - Modified standards
  - Customised solutions
  - Full custom



# Backplanes

## Products & Complexity

- Design Capabilities for:
  - Up to 30 PCB layers
  - Thickness up to 8 mm
  - PCB size up to 600 x 800 mm
  - Active parts on the backplane
  - Copper to optic conversion
  - Bridge circuitry on the backplane
  - Bridge modules (cPCI, cPCI EXP.0)
  - Rigid-flex backplanes





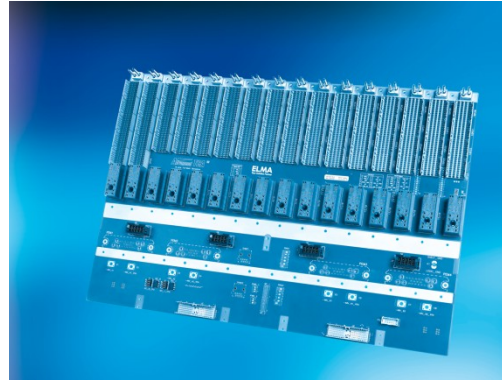
# Product Overview

## Elma Product Lines

### Electronic Packaging



System Platforms



Backplanes

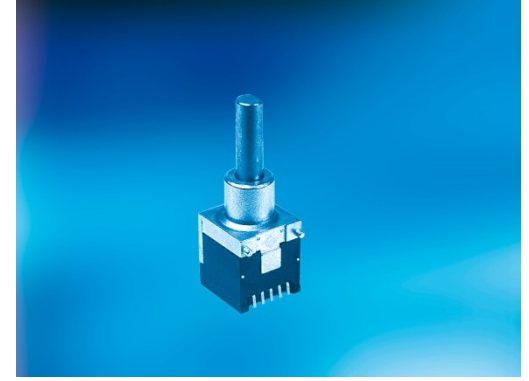


Enclosures & Components



Cabinets

### Rotary Switches



Rotary Switches

# Enclosures & Components

## Market Segments

### Defence / Aerospace

- Harsh environment
- Standards
- Small lot sizes



### Transport / Railway

- Vibration
- Standards, approvals
- Medium lot sizes



### Industrial automation

- Harsh environment
- High number of variants
- Small lot sizes



### Test- and Measurement

- Individual
- Robust
- Small lot sizes



### Medical

- Design
- Reliability
- Small lot sizes



### Telecommunication

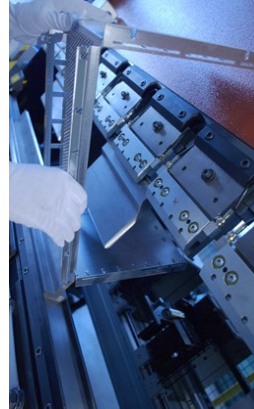
- Functional
- Price sensitive, low costs
- High lot sizes



# Enclosures & Components Manufacturing and Services

## Machining

- Stamping, punching
- Punch drawing
- Bending
- Laser cutting
- Welding (Laser welding to come)
- Drilling
- Milling
- Thread cutting



## Surface treatments

- Passivation of aluminium
- Chromating of aluminium (non RoHS)
- Anodising of aluminium
- Powder coating
- Galvanizing of sheet metal
  - pre-galvanized sheet metal
  - galvanizing after machining
- Nickel plating

## Services

- EMC advisory service
- IP advisory service
- Shock, vibration advisory service
- Thermal simulation
- Testing
- Logistics



## Finishing

- Assembling
- Set packing
- Silk screening
- Digital printing



# Enclosures & Components

## Core competencies

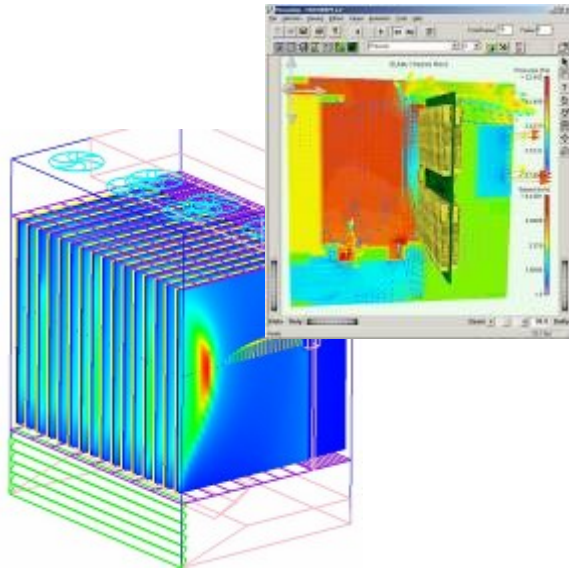
- EMC, ESD
- Vibration
- IP-protection
- Cooling, thermal simulation



Experience in IP protection



Shock- & Vibration-tests in this example on a COTS - System



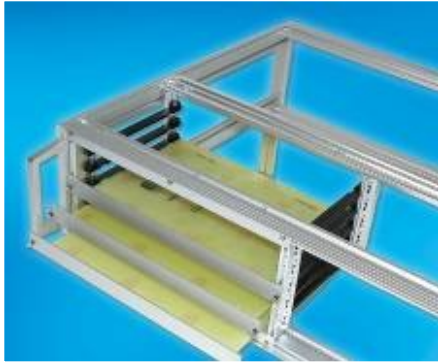
Modern CFD- Software for thermo-simulation already in the 3D model



An “EMC”-enclosure reduces the emission level and increases the immunity against noise

# Enclosures & Components

## Sub racks, chassis, enclosure components



### Characteristics:

- Universal use
- Flexible, scalable
- Functional
- EMC
- Cost effective
- Is mainly used in hidden areas (cabinets)



### Applications:

- Processing units
- Telecommunication
- Scientific
- Machine controls



# Enclosures & Components

## Instrument cases, desk top enclosures



### Characteristics:

- Good design
- Individual design capabilities
- Adaptable
- Robust
- Light weight
- EMC save
- Low number of visible screws



### Applications:

- Test- and measuring equipment
- Laboratory equipment
- Controls



# Enclosures & Components

## Instrument cases, small enclosures



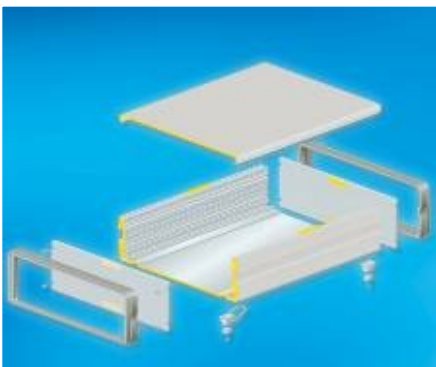
### Characteristics:

- Robust
- Good design
- Big accessories assortment
- Individual design capabilities
- EMC / IP protection



### Applications:

- Test- and measuring equipment
- Decentralized electronics
- Portable electronics
- IT analysis units



# Enclosures & Components

## Front panels, handles and accessories



### Characteristics:

- Mechanics according IEC, IEEE, ATCA
- Standard or EMC front panels
- Big accessories assortment
- Anodized (hard) and passivated (conductive) surfaces
- Elma is market leader in IEEE injector-/ejector handles



### Applications, customer groups:

- Processing units
- Manufacturers of PCB boards, electronic boards
- Pluggable power supplies
- Electronics, logical cards



Source: Elma Group





# Enclosures & Components

Your „Solution Partner“ for customized solutions



## Standard products

Research and development of standard products



## Modified standard products

Modifications on standard products as colours changes, dimensions, hole patterns, extra brackets

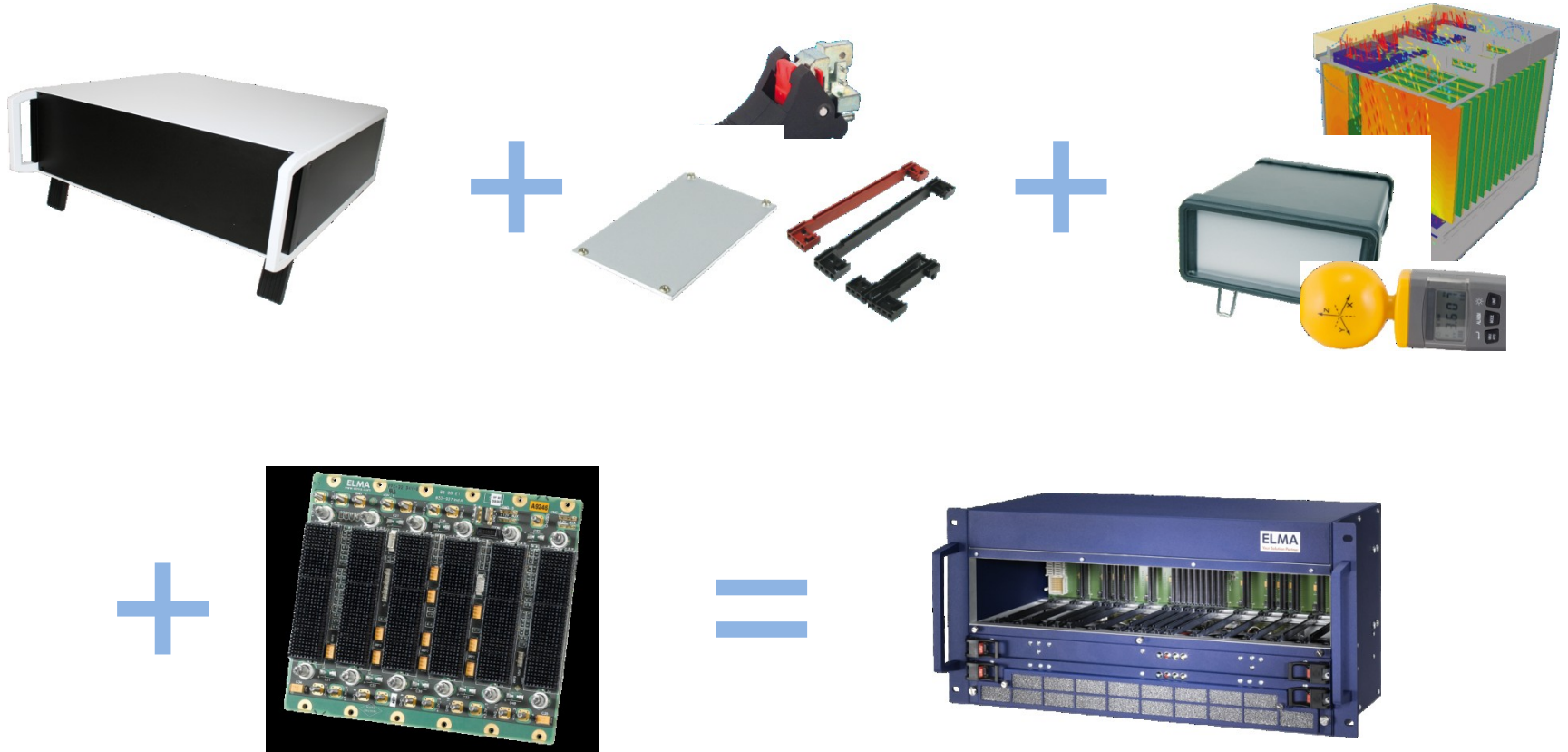


## Customer specific designs

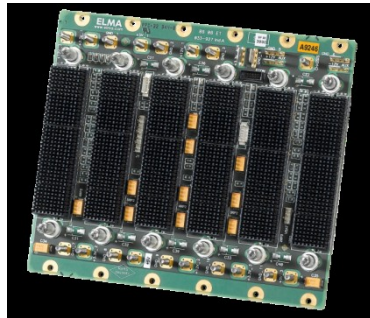
Customer specific products designed to meet requirements of customer application

# Enclosures & Components

## Full Service Provider



+



=



# Enclosures & Components

## Reference Stories

### Guardbox 33 for Testing System

- Customer/Application: Ellisys (Switzerland)  
USB protocol testing system
- Remarks: Customised front panel



# Enclosures & Components

## Reference Stories

**Bystronic**

### Spirit-Kit 11 for Machine Tools

- Customer/Application: Bystronic Laser, Switzerland  
Control of Lasercutting Machine
- Remarks: Customised system, incl. front panels,  
handles, power supplies, ...



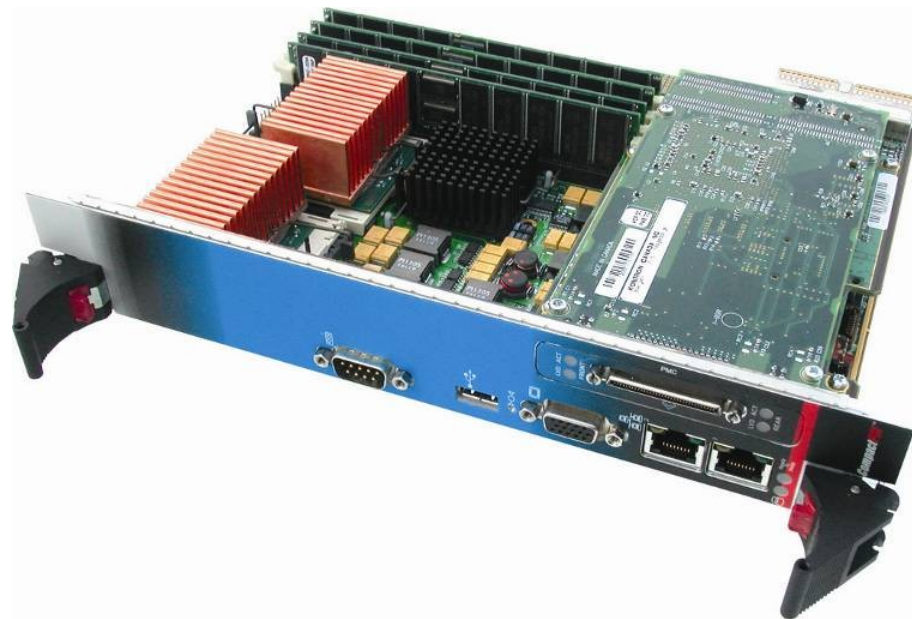
# Enclosures & Components

## Reference Stories



### IEEE-Handles for Telecom

- Customer/Application: Kontron (Germany)  
CompactPCI CPU



# Enclosures & Components

## Reference Stories

### Stylebox 15 for Industrial Automation

- Customer/Application: Telsonic (Switzerland)  
Ultrasonic welding systems
- Remarks: Customised color, customised dimensions



# Enclosures & Components

## Reference Customers



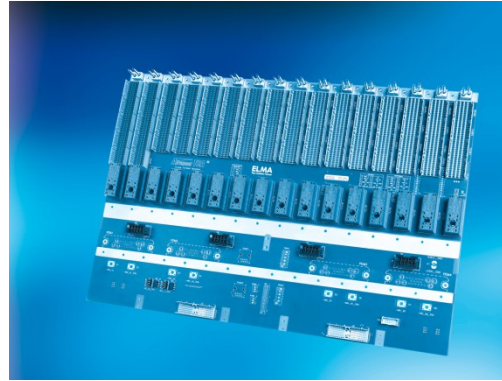
# Product Overview

## Elma Product Lines

### Electronic Packaging



System Platforms



Backplanes

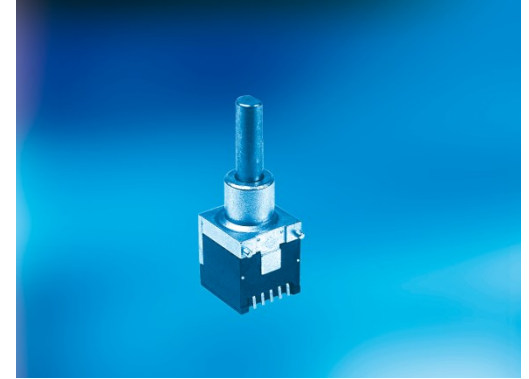


Enclosures & Components



Cabinets

### Rotary Switches



Rotary Switches



# Product Overview

## Cabinets

- 19" standard cabinets
- Server cabinets
- Server and cabling racks
- Compact cabinets
- Wall-mounted cases (network)
- Power distribution units
- Accessories



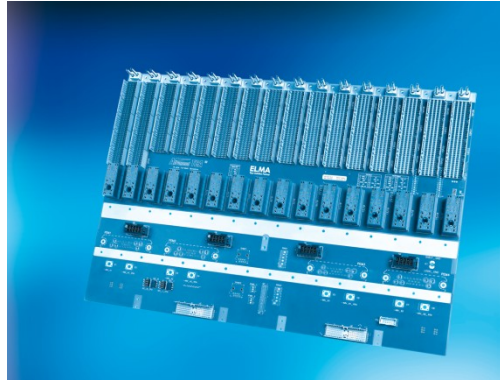
# Product Overview

## Elma Product Lines

### Electronic Packaging



System Platforms



Backplanes

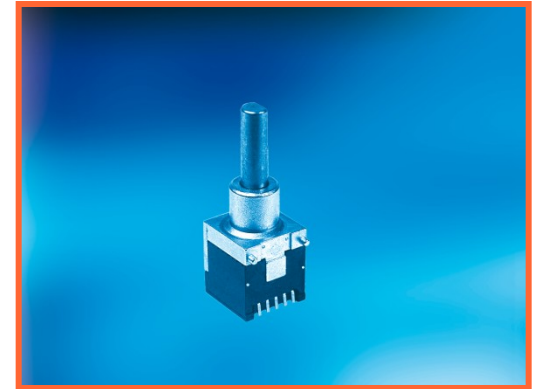


Enclosures & Components



Cabinets

### Rotary Switches



Rotary Switches

# Rotary Switches

## Business Model

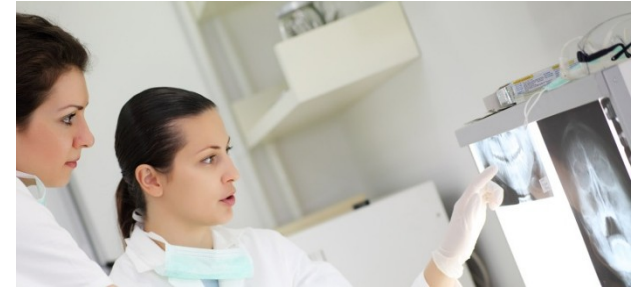
- Design and manufacture of high quality rotary switches
- Supporting market places from industrial to aerospace, worldwide
- Adaptation of the products to the customer's exact requirements
- Customized shafts, bushings, plating, torque, packaging etc.
- Design-in expertise and first class customer support



# Rotary Switches

## Target Markets

- Portable Equipment
  - Heat, cold, splash, humidity
  - Vibration, shock
  - Limited space, high torque
- Medical
  - Splash proof
  - Nice switch feel
- Industrial
  - High variety
  - Cost effective



# Rotary Switches

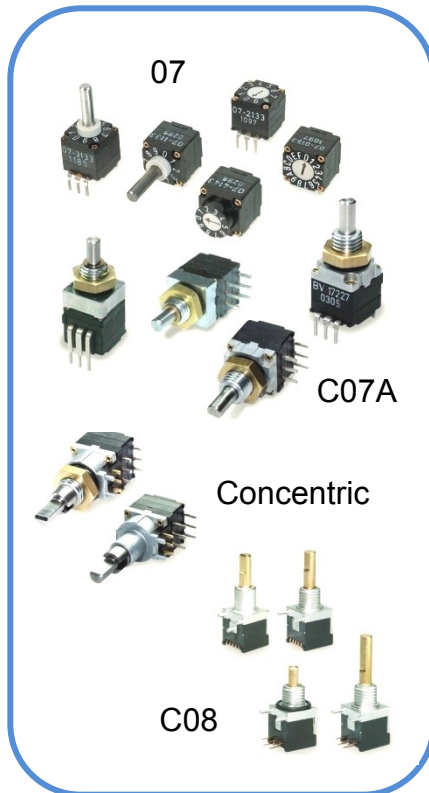
## Target Markets

- Transportation
  - Splash, shock & vibration
  - Cost effective
  
- Aviation
  - Space critical
  - Long life, reliability
  
- Pro Entertainment
  - Superior switch feel
  - Long life



# Rotary Switches Product Overview

## Coded Switches



## Encoders



## Selector Switches



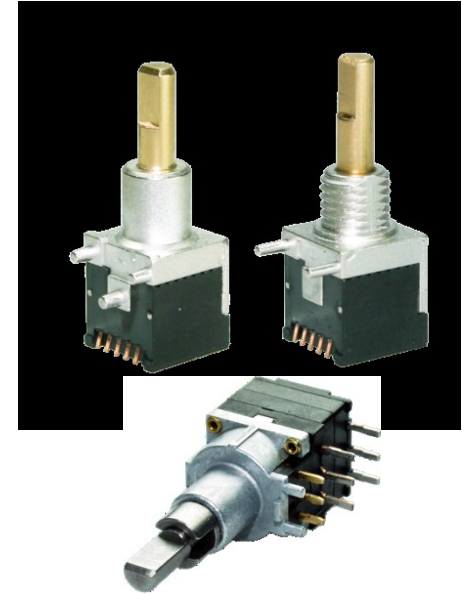
## Knobs



# Rotary Switches

## Coded Switches

- 2 to 16 positions miniature coded switches
- For rugged environments
- Up to 3.5 Ncm switching torque
- THT or THR/SMT reflow
- Optional IP68 front panel sealing (up to 5 bar)
- Operating temperature range: -40 to +85°C
- Various options and customization

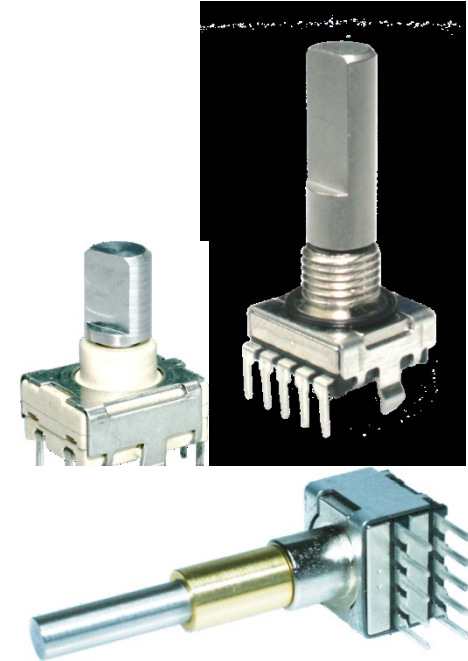


# Rotary Switches

## Mechanical and Optical Encoders

**ELMA** 50 years  
1960-2010  
Your Solution Partner

- 16 to 32 detents resolution
- High life expectancy
- Various switching torques from 0.5 to 2.5 Ncm
- Gold plated contacts
- THT or THR/SMT reflow
- Front panel sealing: up to IP68
- Operating temperature range: up to -40 to +85°C
- Various options and customization

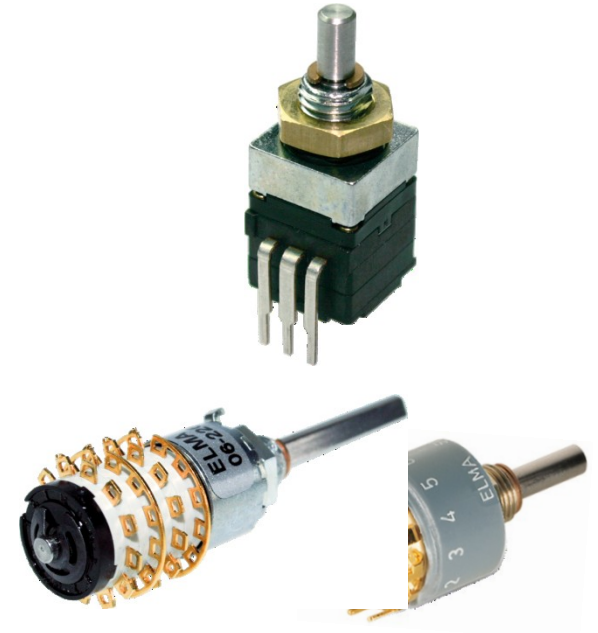




# Rotary Switches

## Selector Switches

- Very robust designs for rugged environments
- Gold plated contacts: 3 micron
- High switching torques: up to 20 Ncm
- Operating temperature: up to -40 to +85°C
- Front panel sealing: up to IP68
- Various options and customization



# Rotary Switches

## Collet and Push-on Knobs

### Classic Collet Knobs

- Precise quality knobs
- Secure collet mounting
- Wide variety
- Lots of accessories
- Custom colors on request



### Soft Touch Collet Knobs

- Ergonomic „soft touch“ feel
- Secure collet mounting



### Push-on Knobs

- „Soft touch“ or hard feel
- Cost effective choice



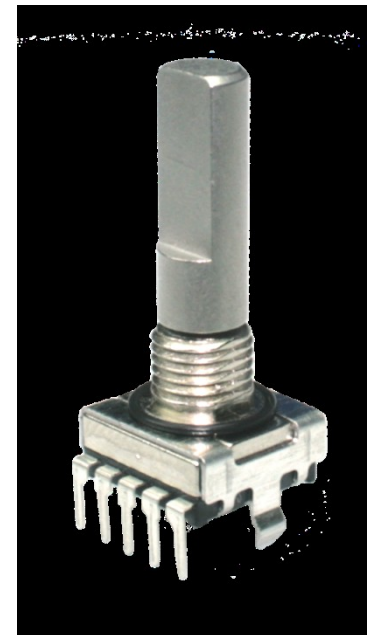
# Rotary Switches

## Reference Stories

### E33 for Pro Amp

- Customer/Application: McIntosh (US)  
Pro amp
- Reason for success: Customized shaft,  
low play customisation

# McIntosh®



# Rotary Switches

## Reference Stories

### E33 for Medical

- Customer/Application: Philips Healthcare (China)  
Patient monitor
- Reason for success: Replacing expensive optical Grayhill

# PHILIPS



# Rotary Switches Reference Stories

## C07A for Multi Role Radio

- Customer/Application: Thales (US)  
Multi role radio „Liberty“
- Reason for success: Perfect fit, customization

THALES

Interoperability Solved

All Bands.  
All Modes.  
Full Encryption.  
Same Size.  
One Radio.



THALES Liberty. It's The One.

THALES

All Bands	136-869 MHz (136-174, 380-520, 700, 800 MHz)
All Modes	P25 Conventional and Trunked, Analog
Full Encryption	DES, AES, OTAR
Same Size	Equal in size and weight to a single-band portable



# Rotary Switches

## Reference Stories

### Type 01 for Electronic Warfare

- Customer/Application: Netline (Israel)  
Jammer
- Reason for success: Customization; special shaft, IP68, robustness



# Rotary Switches

## Reference Customers

**ELMA** 50 years  
1960-2010  
Your Solution Partner

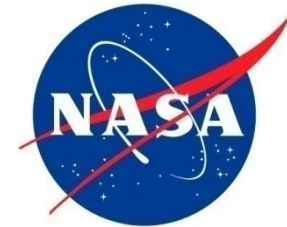
**THALES**

  
**ROHDE & SCHWARZ**

 **BOEING®**

  
**MOTOROLA**

  
**EADS**

  
**NASA**

**HYT**

**PHILIPS**

**McIntosh®**

  
**MEPROLIGHT®**



  
**Elbit Systems**

# Elma Group

## Company presentation



Thank you for your attention.