



# LHC BLM: READINESS FOR STABLE BEAMS

Christos Zamantzas on behalf of SY-BI

# General

- BLM system ready for stable beams
  - Check of interlocking capability in P8 done
  - All checks pass and no blocking issue
- Some issues to note in the next slides
  - Rack Temperature Control
  - One XPOC Buffer in Error
  - 11R5 Unphysical Measurements
  - Temporary installation in 4R1 present until EYETS

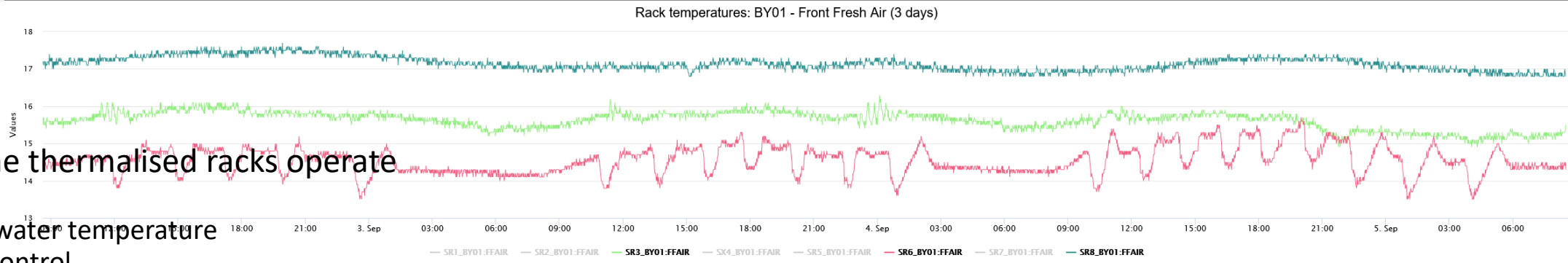
# Interlock Test at P8

- Interlock test with beam done by OP on the 31/08

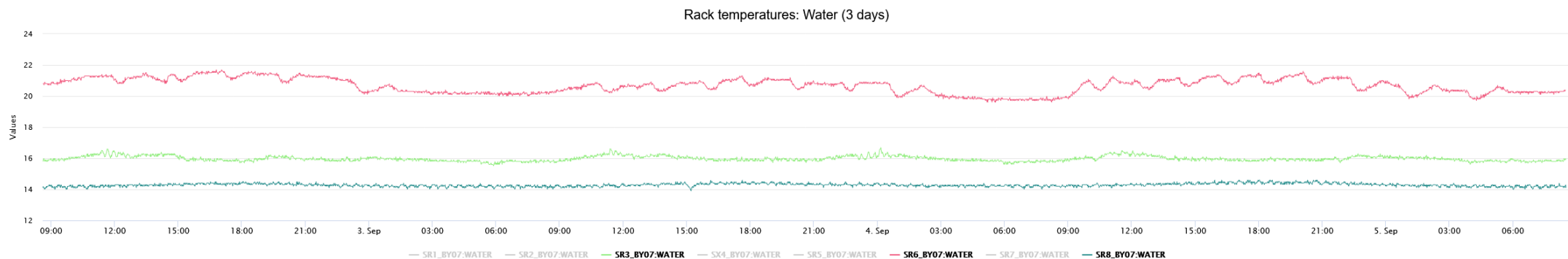
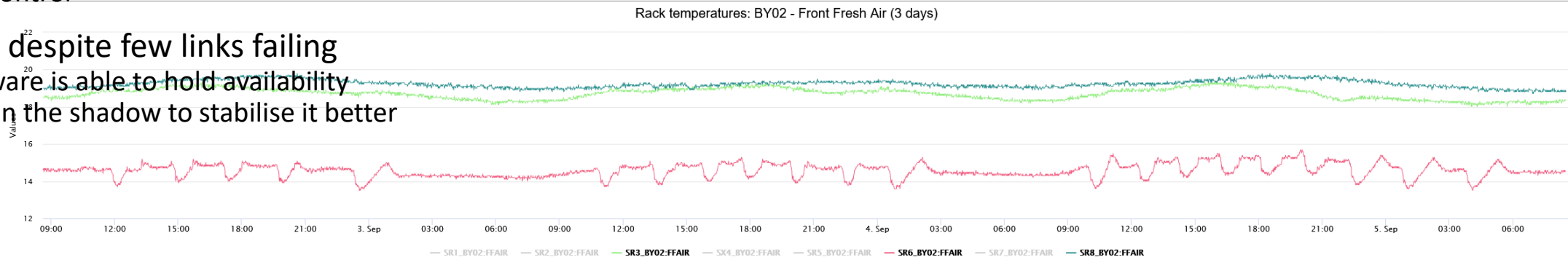
The screenshot shows a control room interface with a menu bar at the top containing navigation icons and the text '31.Aug.23 MORNING'. A dialog box titled 'Masks CIB.SR8.INJ2.2' is open, listing inputs 8 through 14 with checkboxes for 'COLL-MOT (ring part)' and 'COLL-ENV (ring part)'. Below the list are 'Set masks' and 'Get masks' buttons. The main area displays a timestamp '12:52:30' and the text 'finally BLM test done!'. Below this is a data plot with a green baseline and a red signal, and a terminal window with red and white text. At the bottom, another timestamp '12:52:06' is visible.

# Rack Temperature Control

- At 3 points the thermalised racks operate with
  - high inlet water temperature
  - Unstable control

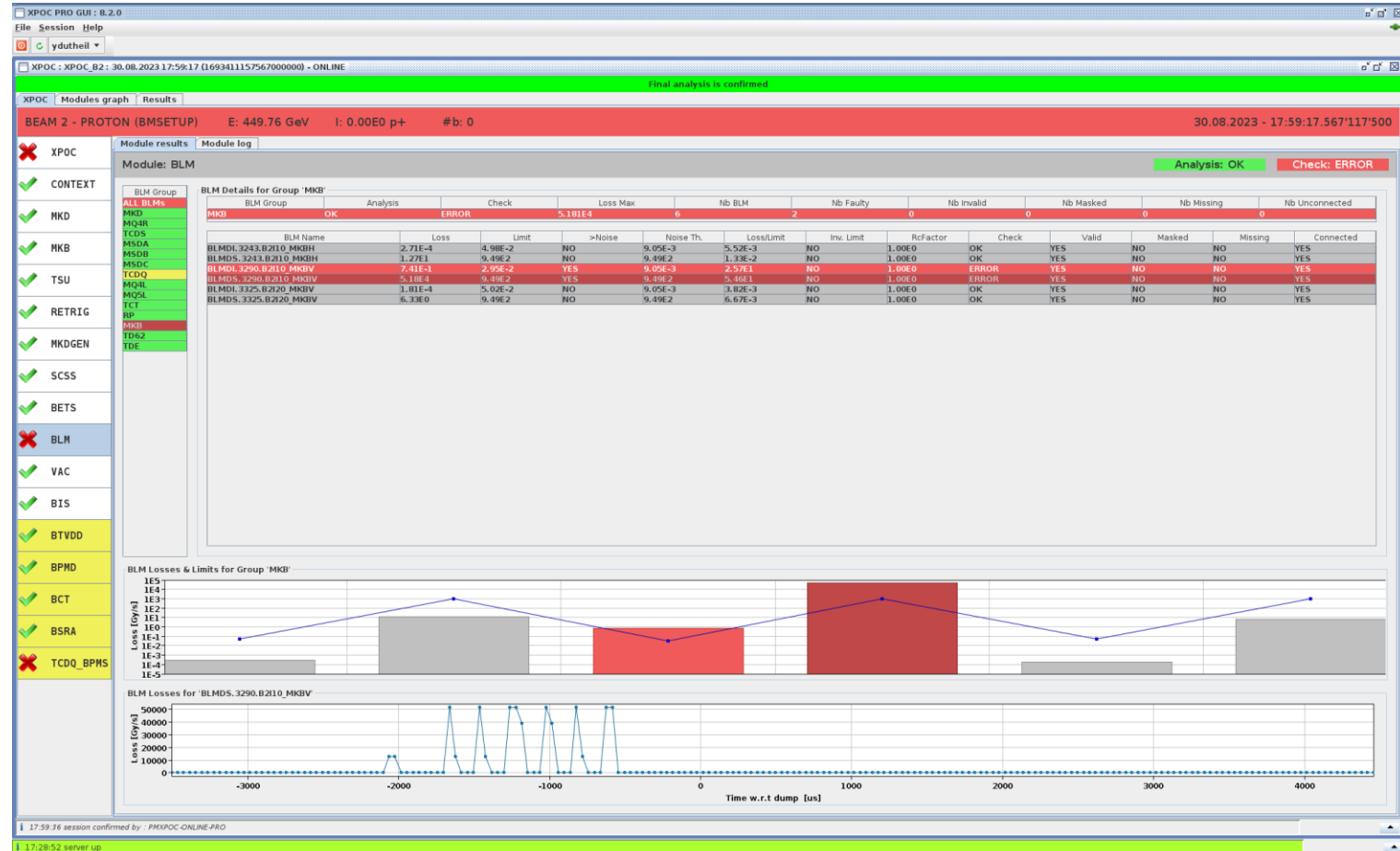


- Not blocking, despite few links failing
  - New firmware is able to hold availability
  - Will work in the shadow to stabilise it better



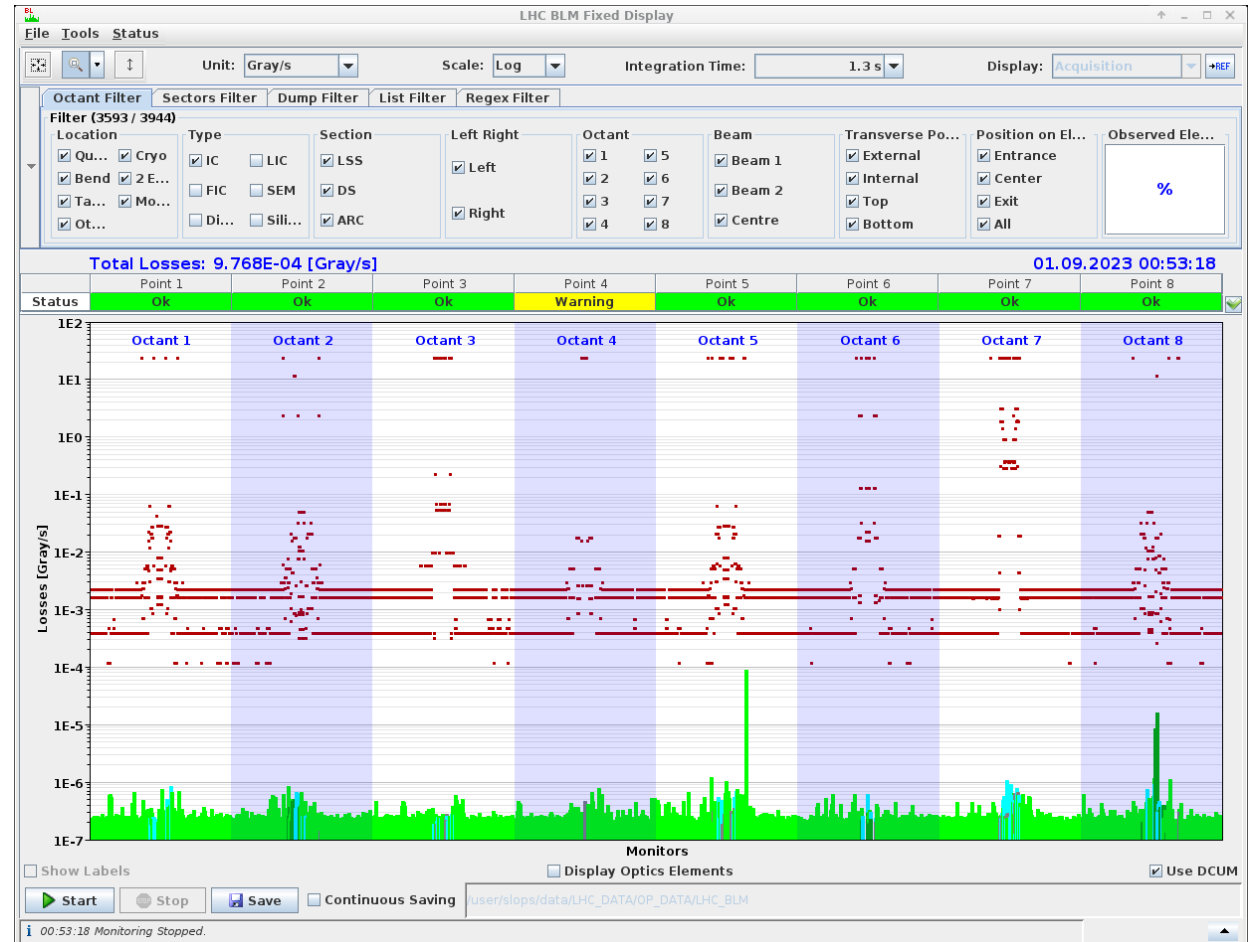
# XPOC Buffer Error

- Corrupted data in the XPOC buffer of one processing card
  - Similar error seen in the past on PM data
- Yann summarises here several dumps:  
<https://logbook.cern.ch/elogbook/server/GET/showEventInLogbook/3821756>
- Module to be exchanged tomorrow
- Tacked: [BIBML-2810](#)



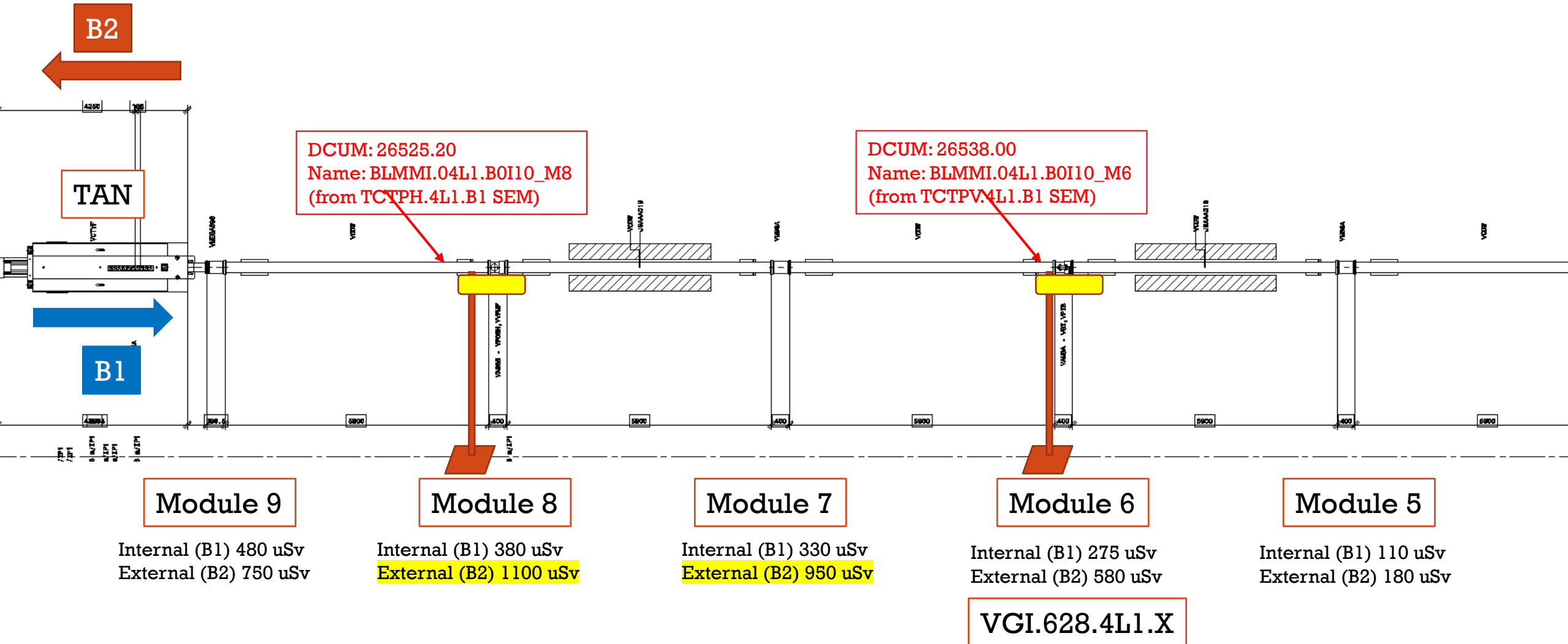
# 11R5 Unphysical Measurements

- Michi reported: <https://be-op-logbook.web.cern.ch/elogbook-server/GET/showEventInLogbook/3822401>
- Detector in 11R5 with unphysical looking signal
- Under investigation
  - First analysis: does not seem to be a fault
  - Investigation to continue



# Mobile BLM at 4L1 (1/2)

To be removed during next EYETS



# Mobile BLM at 4L1 (2/2)

To be removed during next EYETS

