

# Building Partnerships Between Social Science Data Archives and Institutional Repositories

Jared Lyle  
ICPSR  
University of Michigan

JCDL DR Workshop 2011



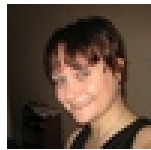
ICPSR

INTER-UNIVERSITY CONSORTIUM FOR  
POLITICAL AND SOCIAL RESEARCH

A PARTNER IN SOCIAL SCIENCE RESEARCH



INSTITUTE *of*  
**Museum** and **Library**  
SERVICES



**@LizzieM79**

Elizabeth

"DSpace = dead space when it comes to data" - comment from the floor in F1 at **#iassist**

2 hours ago via **Echofon**

[twitter.com/#!/LizzieM79/status/76699572784726016](https://twitter.com/#!/LizzieM79/status/76699572784726016)

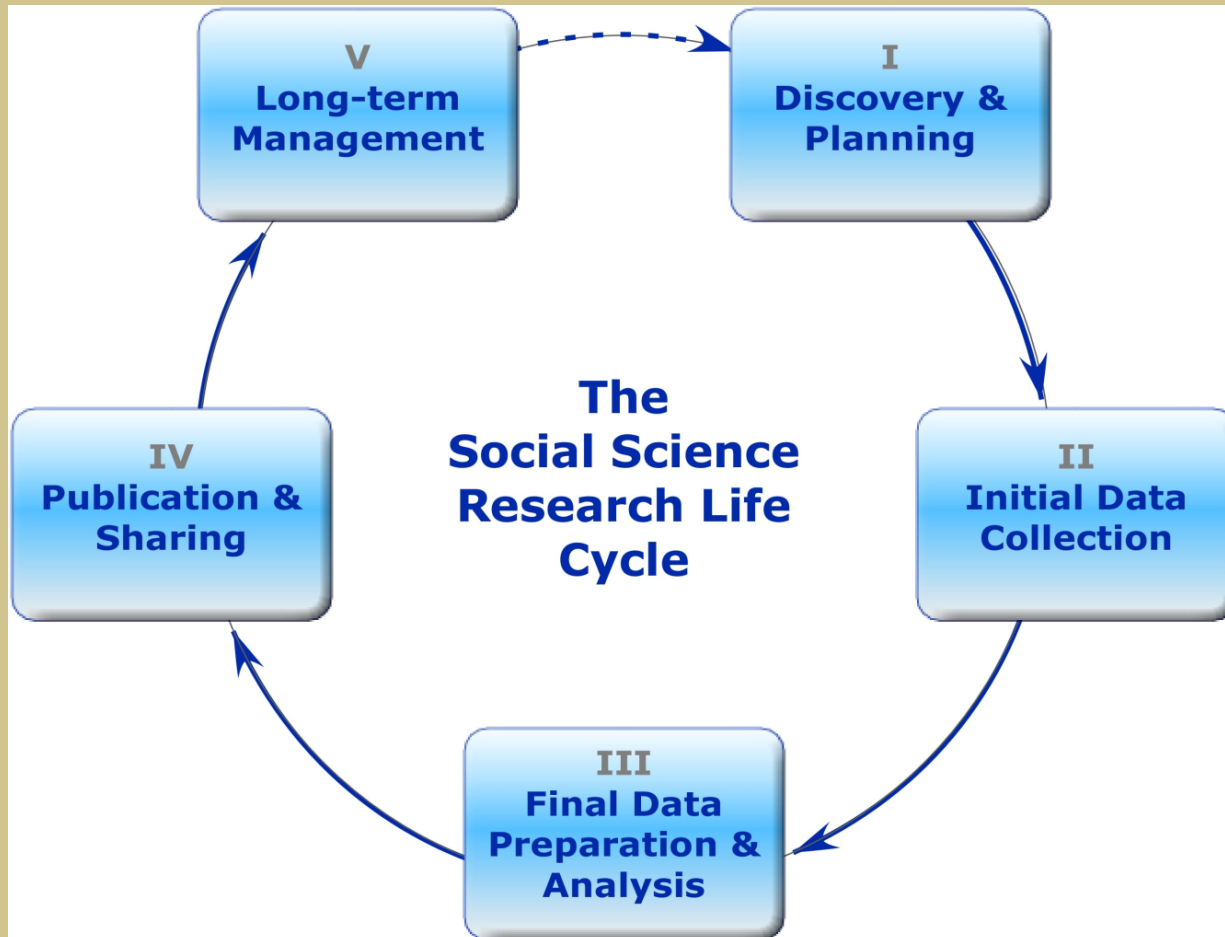
“....Like Kevin, I believe that ‘repositories’ are very much more socio-technical than engineered black-box systems; a significant part of the value of the repository is the huge librarian investment in moral advocacy and practical assistance that goes with the web service (whatever the platform, whatever the policy infrastructure).”

-Les Carr (23 May 2011 posting on [JISC-REPOSITORIES@jiscmail.ac.uk](mailto:JISC-REPOSITORIES@jiscmail.ac.uk) listserv)

# Goals

1. Form partnerships with Institutional Repositories.
2. Develop guide designed for use by Institutional Repositories.
3. Develop services for Institutional Repositories to assist with specialized tasks.

# Goal 1: Form Partnerships



The screenshot displays the RUcore website interface. At the top, there are logos for SMARTech (Scholarly Materials And Research at Georgia Tech) and Georgia Tech Library & Information Center. A navigation bar includes links for Home, About Us, Site Search, Open Source Projects, and Developers' Area. A search bar is present with a 'Search' button. The main content area features the 'RUcore' logo and the title 'Rutgers Community Repository'. Below this, there is a section for 'Open Source Development' with a 'Philosophy' paragraph, a 'License' paragraph (citing GNU General Public License v. 3.0 and GNU GPL v. 3.0), a 'Support' paragraph, and a 'Communication' paragraph. A 'Current Release Schedule' section is partially visible at the bottom. On the right side, there is a sidebar with a search bar for 'RUcore' and a list of 'Current Projects' including OpenMIC, OpenETD, OpenWMS, and OpenWAAND. A vertical navigation menu on the left includes links for 'Browse' (Community & Collections, Date, Author, Title, Subject, Type), 'Sign on', 'My Account', and 'Information' (Help, About, Contact).



## Pilot Studies

- Gloria Main
  - Probate records from colonial New England
  - Work records from account books, 1660-1770
- Orville Burton
  - Database linking people and farms, 1850-1880
- J. Morgan Kousser
  - Racial and class discrimination in South, 1880-1910
- Philadelphia Social History Project
- Maris Vinovskis
  - Data on 13,000 individuals from MA in 1860

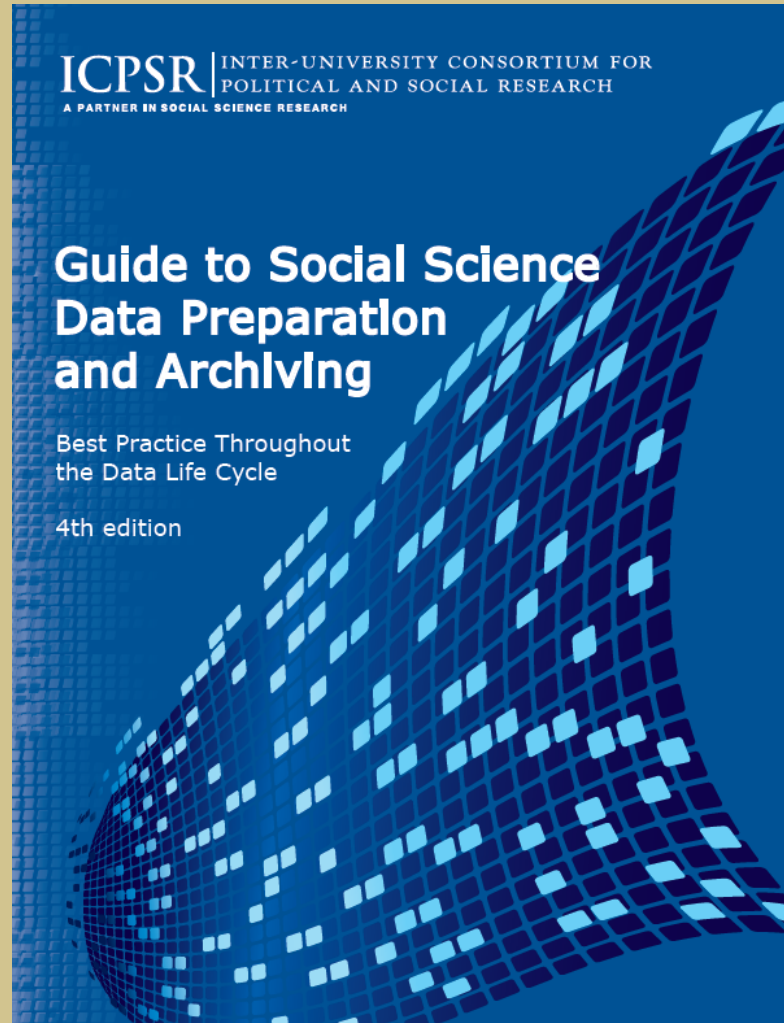


**ICPSR**

INTER-UNIVERSITY CONSORTIUM FOR  
POLITICAL AND SOCIAL RESEARCH

A PARTNER IN SOCIAL SCIENCE RESEARCH

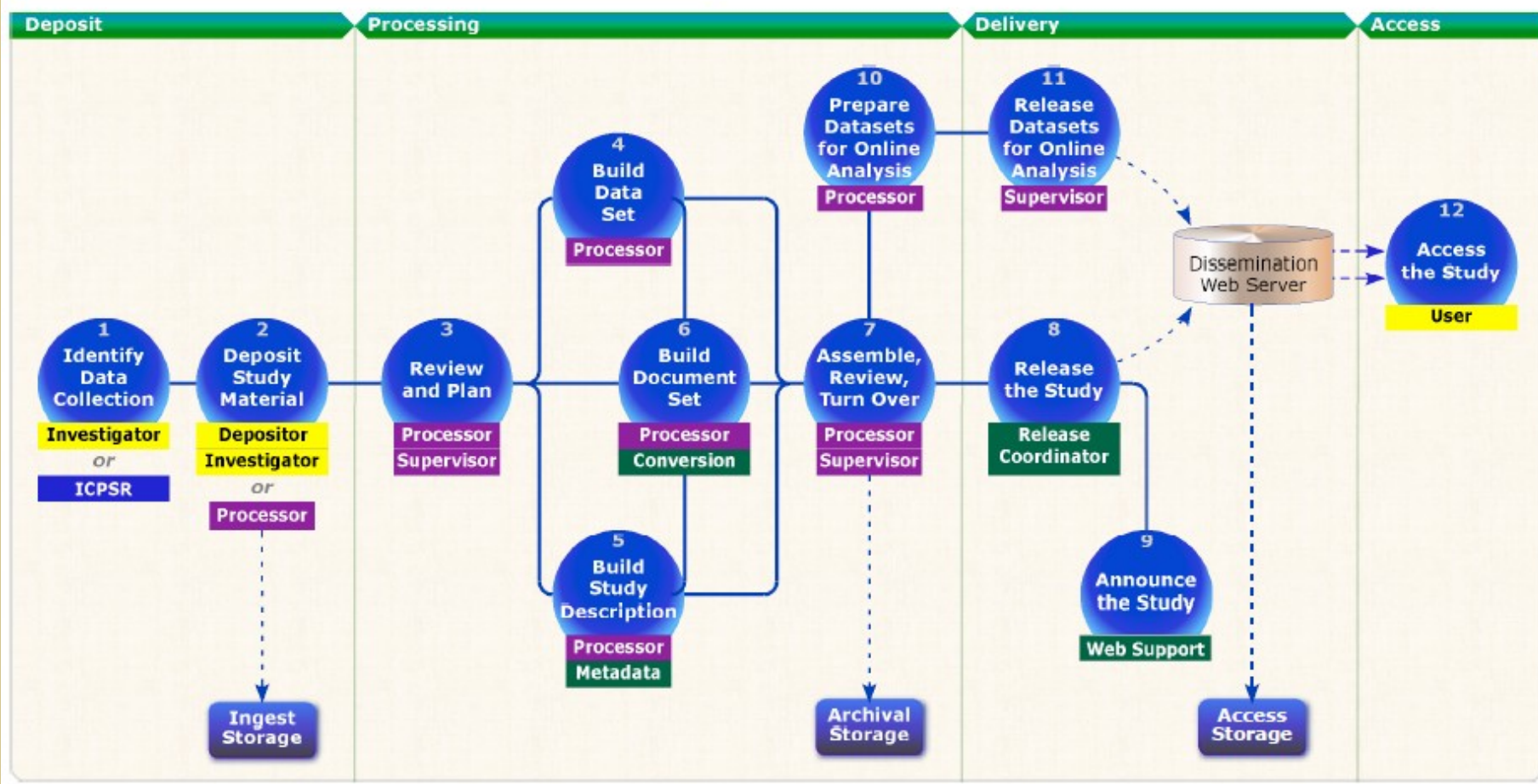
# Goal 2: Develop Guide



# Goal 3: Develop Services for IRs

## The ICPSR Pipeline Process

How ICPSR Acquires, Archives, and Disseminates a Typical Study



# Possible Services:

- Data recovery from obsolete file formats and media
- Codebook validation
- Metadata construction and editing
- Automated processing tools
- Treatment of non-standard data formats
- Disclosure analysis
- Management of dissemination of confidential data

# Goals

1. Form partnerships with Institutional Repositories.
2. Develop guide designed for use by Institutional Repositories.
3. Develop services for Institutional Repositories to assist with specialized tasks.

**Thank you!**

[lyle@umich.edu](mailto:lyle@umich.edu)