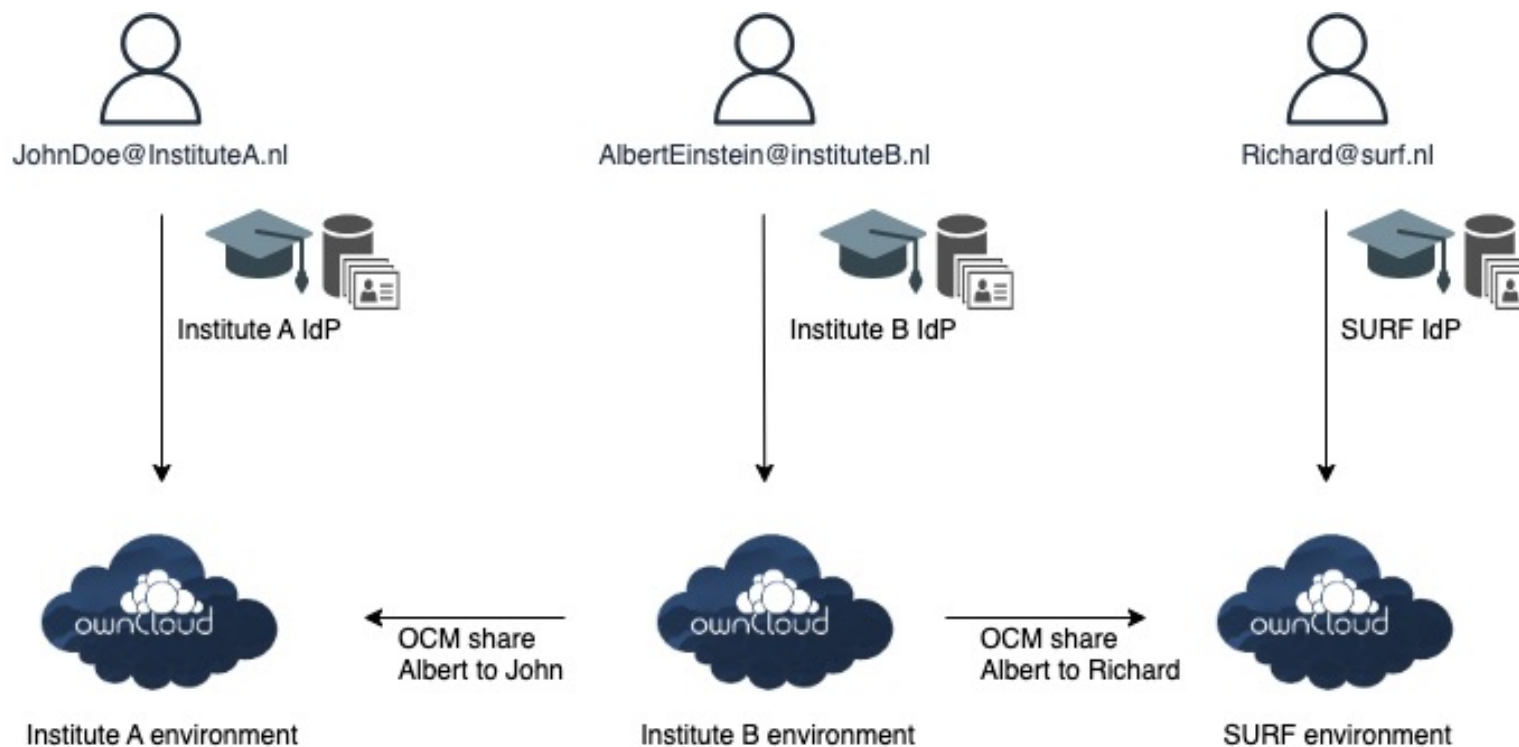
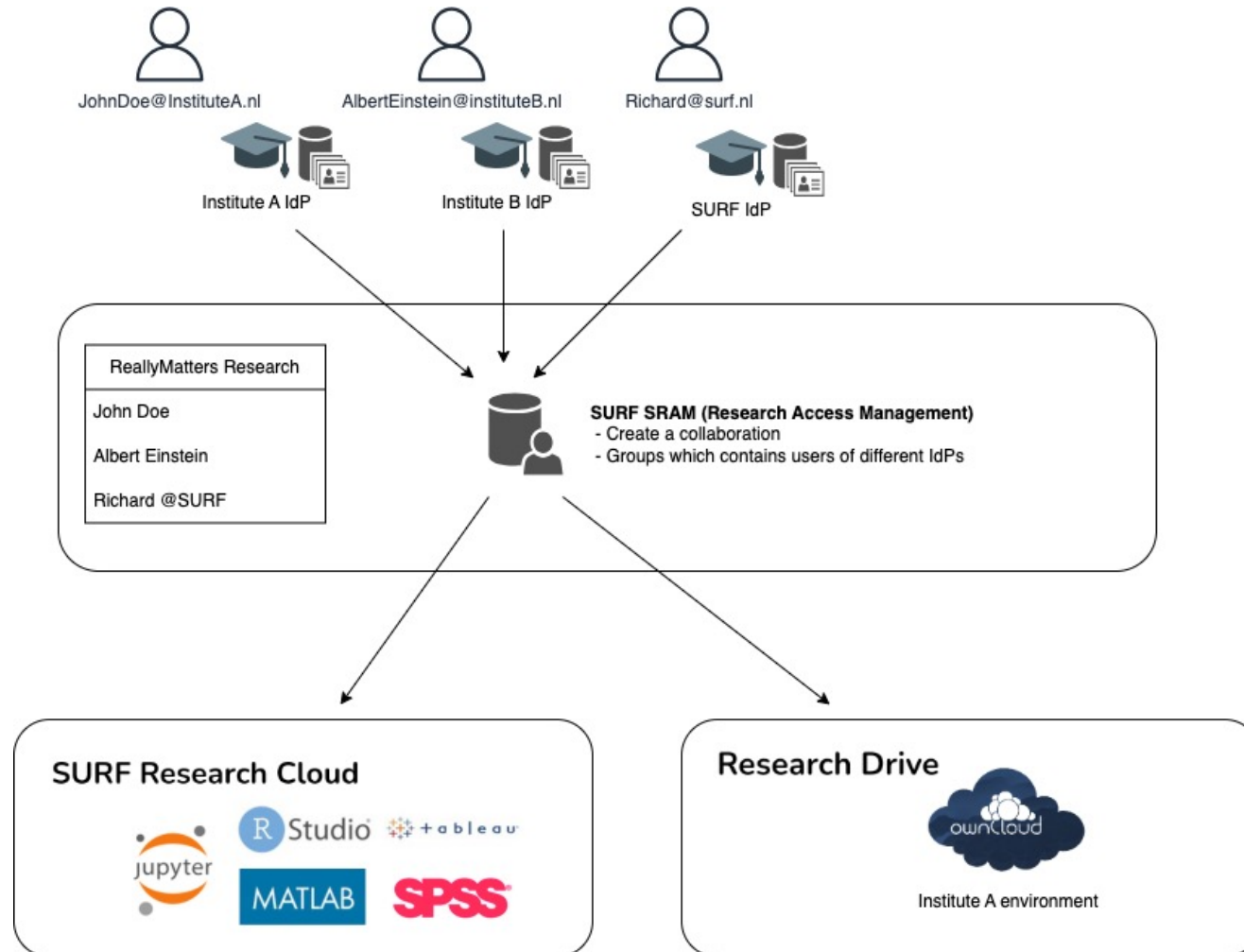


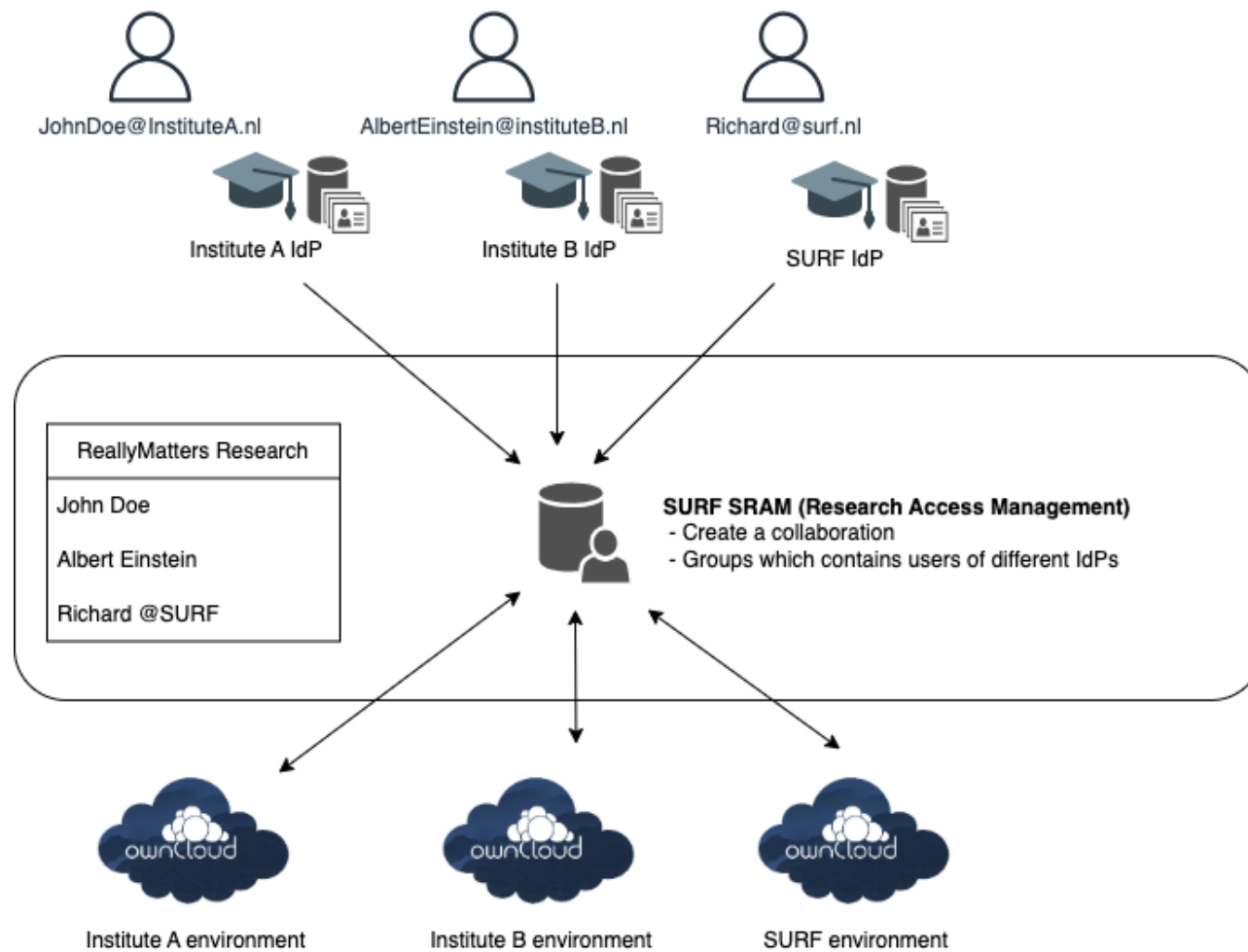
# OCM Federated Share - User to User



# Research Collaborations



# | SURF Research Drive



# | Federated Groups app

The image displays two side-by-side screenshots of the Open Cloud Mesh user interface. Both screenshots show a search bar with the text 'group@oc2.docker' and a dropdown menu with two results: 'group@oc2.docker Federated' and 'group@oc2.docker Federated Group'. The left screenshot is for the 'Federated Groups' app, and the right is for the 'Open Cloud Mesh' app. Both apps are categorized as 'App | Collaboration' and are published by 'Ponder Source'. The 'Federated Groups' app has 85 downloads, while 'Open Cloud Mesh' has 113. Both have a 'Go To App' button at the bottom.

**User and Groups** Public Links

group@oc2.docker | i

- group@oc2.docker Federated
- group@oc2.docker Federated Group

App | Collaboration

## Federated Groups

Support groups with both local and ...

Downloads: 85

Publisher: Ponder Source

[Go To App](#)

**User and Groups** Public Links

group@oc2.docker | i

- group@oc2.docker Federated
- group@oc2.docker Federated Group

App | Collaboration

## Open Cloud Mesh

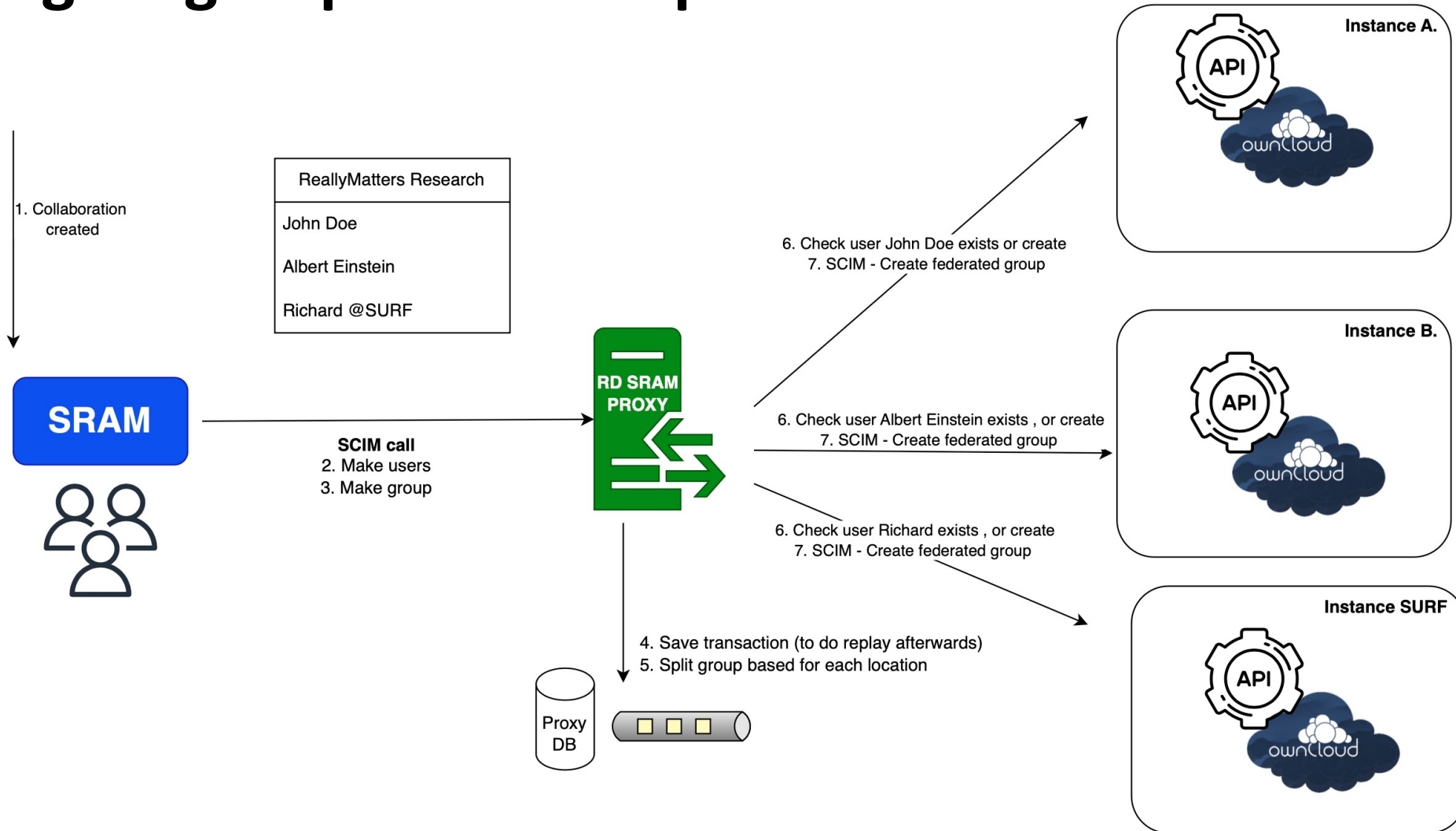
Supports federated sharing with gro...

Downloads: 113

Publisher: Ponder Source

[Go To App](#)

# Propagate groups via SCIM protocol



# OCM Federated Share - User to Group

