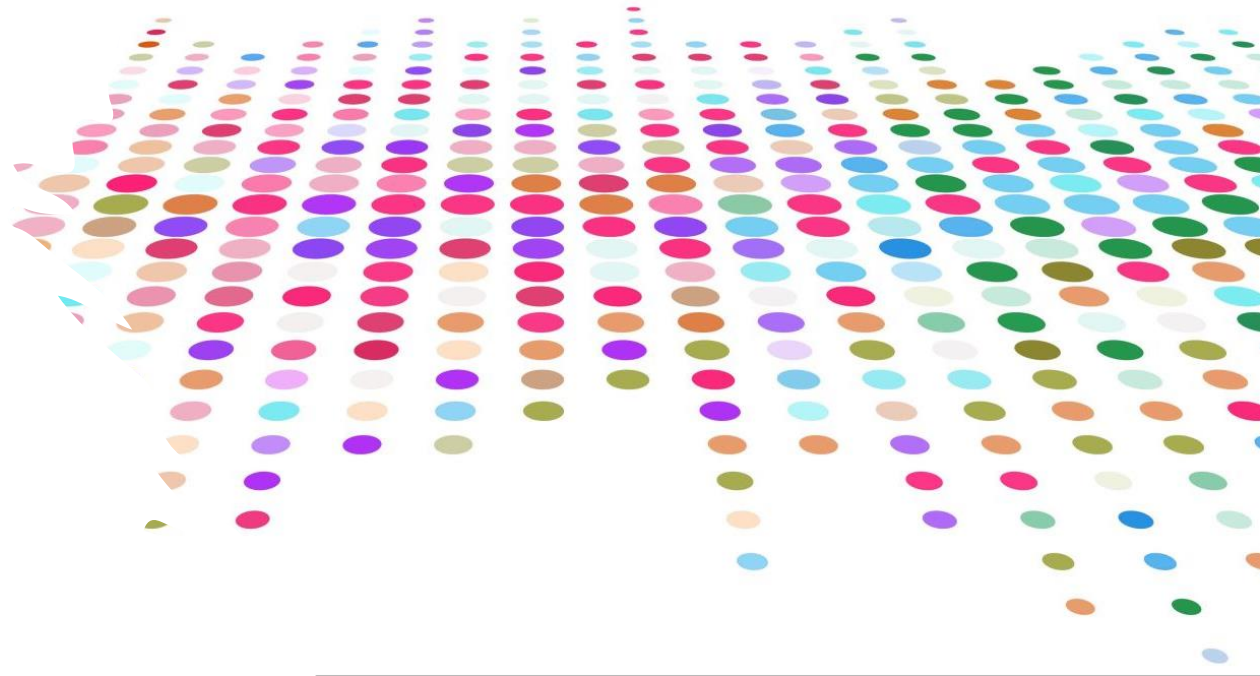


OCM discovery through DNS

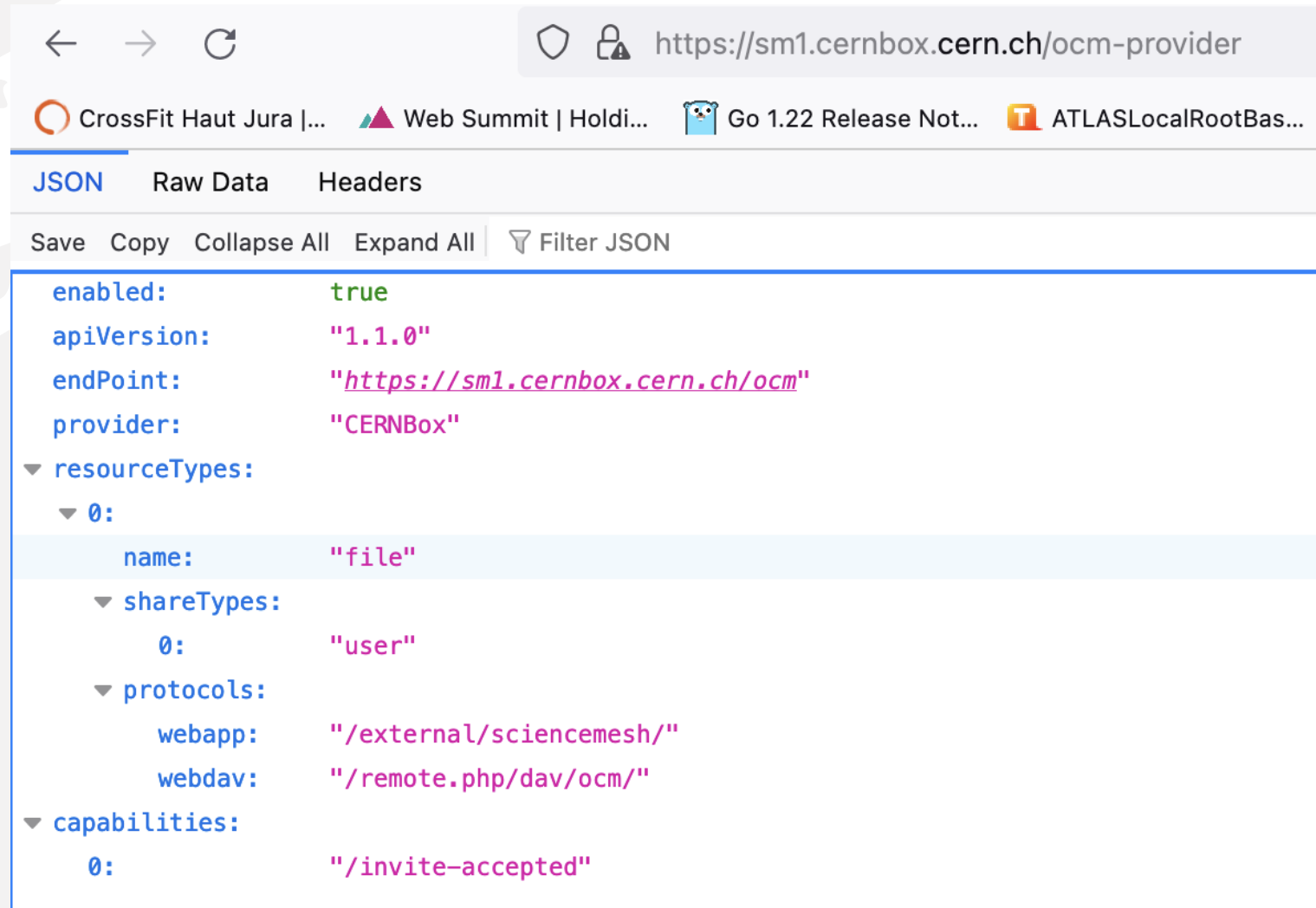
Hugo Gonzalez Labrador

CERN IT



OCM discovery today

/ocm-provider endpoint

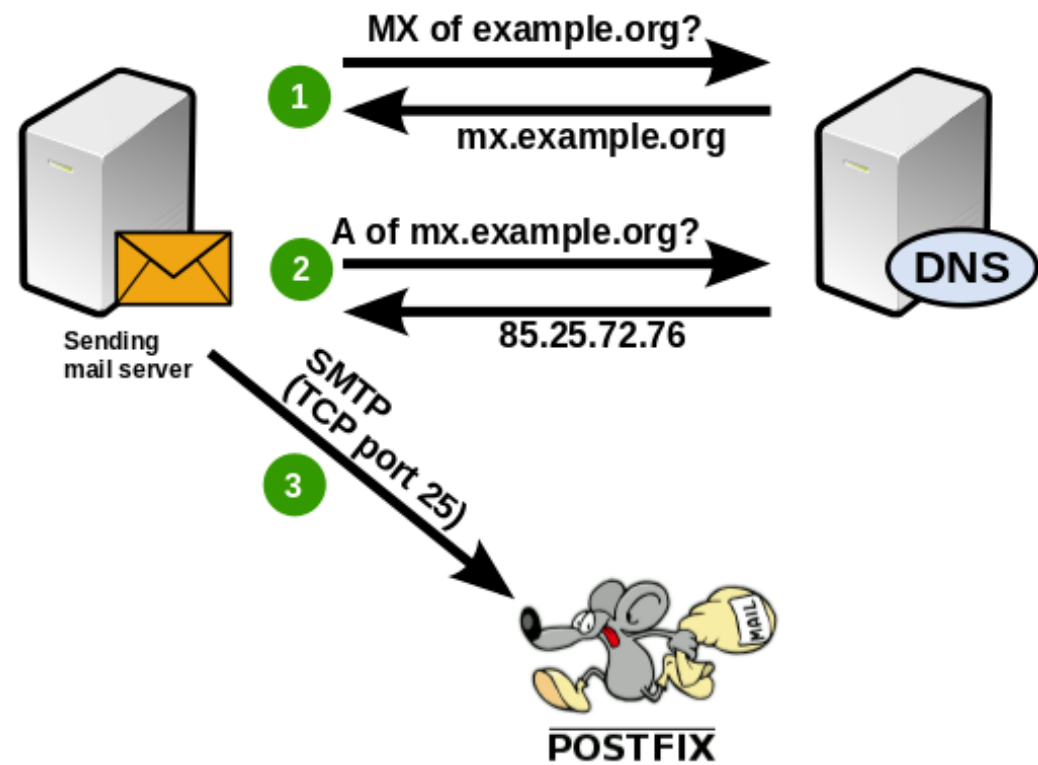


The screenshot shows a web browser window with the address bar displaying `https://sm1.cernbox.cern.ch/ocm-provider`. The browser's developer tools are open, showing the JSON response from the endpoint. The response is a JSON object with the following structure:

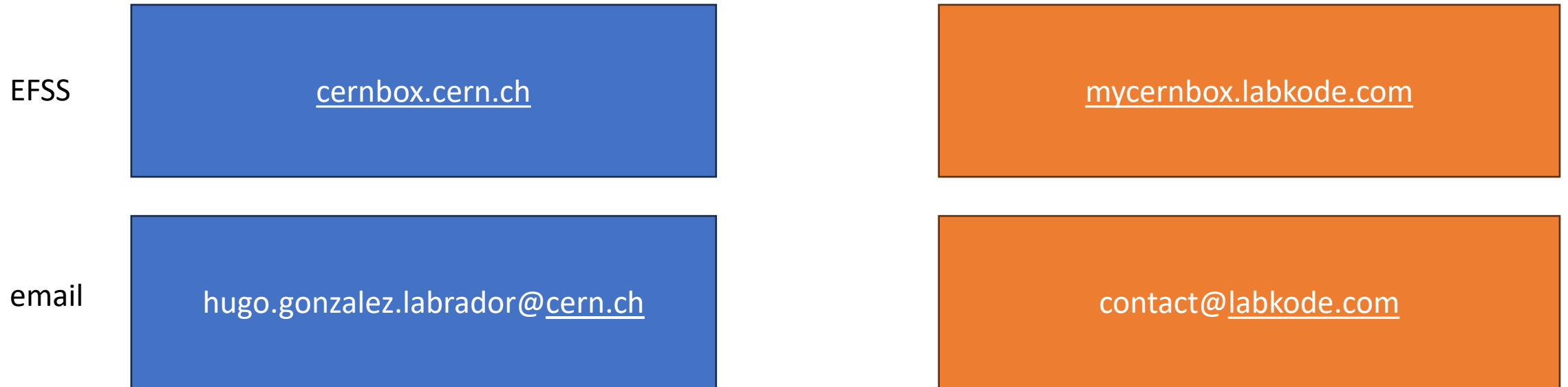
```
{  "enabled": true,  "apiVersion": "1.1.0",  "endPoint": "https://sm1.cernbox.cern.ch/ocm",  "provider": "CERNBox",  "resourceTypes": [    {      "name": "file",      "shareTypes": [        {          "0": "user"        }      ],      "protocols": {        "webapp": "/external/sciencemesh/",        "webdav": "/remote.php/dav/ocm/"      }    }  ],  "capabilities": [    {      "0": "/invite-accepted"    }  ]}
```

The browser's developer tools interface includes tabs for "JSON", "Raw Data", and "Headers". Below the tabs, there are options to "Save", "Copy", "Collapse All", "Expand All", and "Filter JSON". The JSON response is displayed in a tree view, with the "resourceTypes" array expanded to show a single object with "name", "shareTypes", and "protocols" fields. The "capabilities" array is also expanded to show a single object with a "0" key.

How mail works?



Problem



People exchange emails to collaborate NOT EFSS hostnames

ScienceMesh brings a central directory service, to have a map of all EFSS endpoints and relies on an invitation workflow to link a mail with an EFSS endpoint.

Cumbersome, we can do better.

Share with people ?

Invite

contact@labkode.com

get_dns_srv(_ocm._tcp.labkode.com)

_ocm._tcp.labkode.com service = 10 10 443 mycernbox.labkode.com.

Discover OCM capabilities



mycernbox.labkode.com/ocm-provider

Allows email clients to automatically find the correct settings for your account.

Type	Host	Priority	Weight	Port	Target
SRV	_submission._tcp.{mydomain.com}	0	1	587	smtp.fastmail.com
SRV	_imap._tcp.{mydomain.com}	0	0	0	.
SRV	_imaps._tcp.{mydomain.com}	0	1	993	imap.fastmail.com
SRV	_pop3._tcp.{mydomain.com}	0	0	0	.
SRV	_pop3s._tcp.{mydomain.com}	10	1	995	pop.fastmail.com
SRV	_jmap._tcp.{mydomain.com}	0	1	443	api.fastmail.com

Client CalDAV auto-discovery

Allows CalDAV clients to automatically find the correct settings for your account.

Type	Host	Priority	Weight	Port	Target
SRV	_caldav._tcp.{mydomain.com}	0	0	0	.
SRV	_caldavs._tcp.{mydomain.com}	0	1	443	caldav.fastmail.com

SRV records are industry best practice, let's put OCM also there.