

The background features a complex network of interconnected nodes and lines, resembling a molecular structure or a data network, set against a light gray gradient. The nodes are small black dots, and the lines are thin gray lines connecting them. The overall effect is a sense of connectivity and technology.

# **WELCOME & LOGISTICS FOR ISOTDAQ 2024**

**Yusheng Wu for Local Organizing Committee**

**University of Science and Technology of China**

**June 19, 2024**





# ISOTDAQ 2024

14<sup>th</sup> International School of Trigger and Data Acquisition

Jun. 19<sup>th</sup> – Jun. 28<sup>th</sup> 2024

University of Science and Technology of China, Hefei, China

**Target Audience:** Physicists, engineers and computer scientists with an interest in trigger and data acquisition systems

**Places are limited:** Acceptance is by a selection committee

**Registration Deadline:** 31 January 2024

**Email:**  
isotdaq.schools@cern.ch

**Website:**  
<https://indico.cern.ch/event/1337180>



<input checked="" type="checkbox"/> Trigger	<input checked="" type="checkbox"/> DAQ	<input checked="" type="checkbox"/> Application Examples
<ul style="list-style-type: none"><li>• Modular Electronics</li><li>• Front-End Electronics</li><li>• Associative memories</li><li>• FPGA Programming</li><li>• Neural Networks</li></ul>	<ul style="list-style-type: none"><li>• ADC, TDC, Detector Readout</li><li>• Micro Controllers</li><li>• VMEBus, xCTA, PCI, PCIe</li><li>• Data Networks</li><li>• Event and Buffer Management</li><li>• C/C++ Programming for DAQ</li></ul>	<ul style="list-style-type: none"><li>• General Concepts for TDAQ</li><li>• Insight on LHC TDAQ</li><li>• Non-LHC Systems</li></ul>

## CERN Organizing Committee

Paolo Durante  
Markus Joos  
Hannes Sakulin  
Barthelemy von Haller

## Local Organizing Committee

Toni Baroncelli    Zhujun Fang  
Changqing Feng    Qipeng Hu  
Nan Lu    Jinhong Wang  
Yusheng Wu    Junfeng Yang



**Logistics in school website:**

<https://indico.cern.ch/event/1337180>

**LOC** ([isotdaq2024-loc@lists.ustc.edu.cn](mailto:isotdaq2024-loc@lists.ustc.edu.cn)):

USTC physicists (particle physics experiments and physics electronics)

with support from

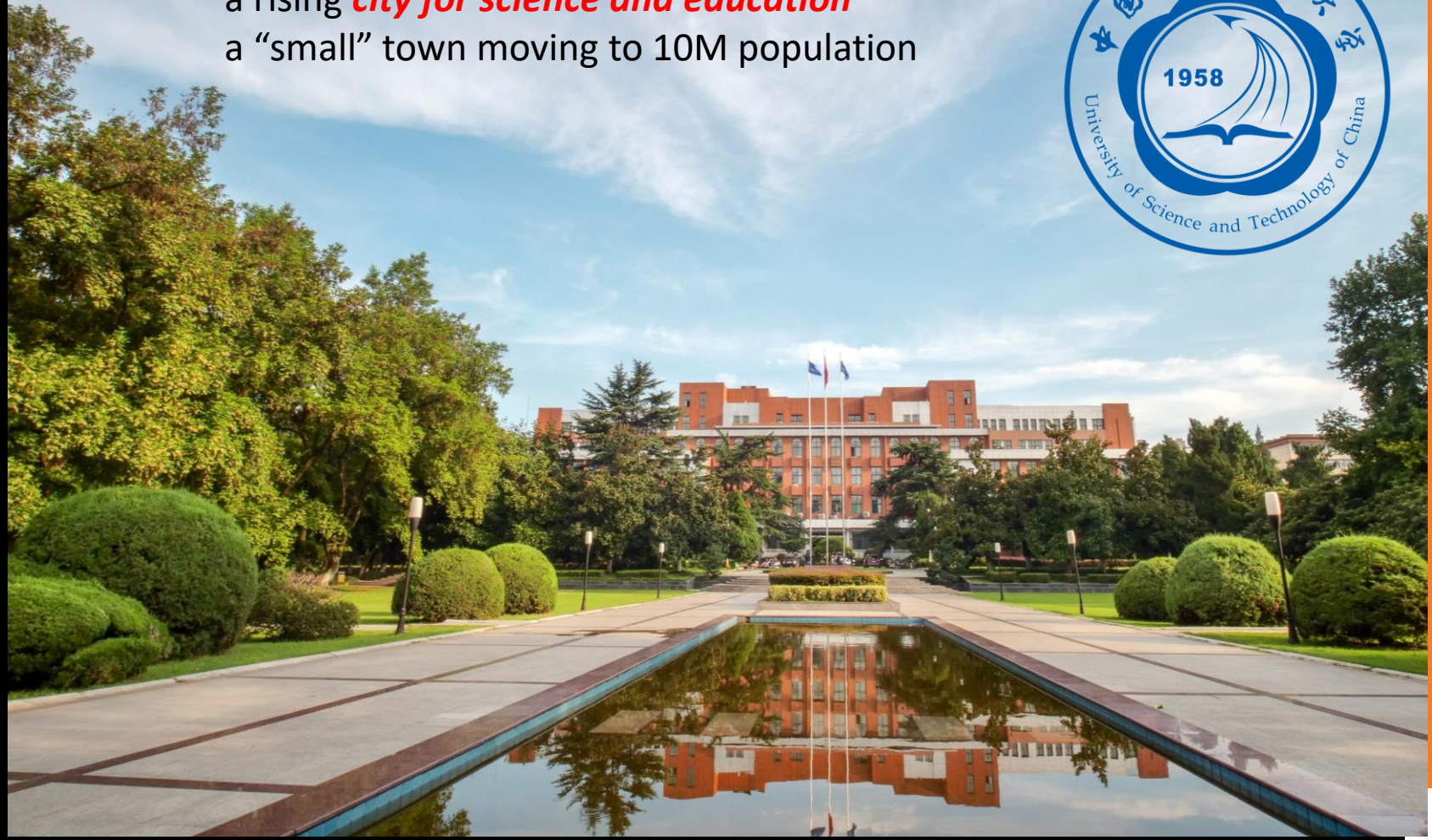
→ Physics Experiment Teaching Center for lab space and supplementary equipment

→ Office for International Cooperation for excursion event

→ Secretariat + group of volunteers



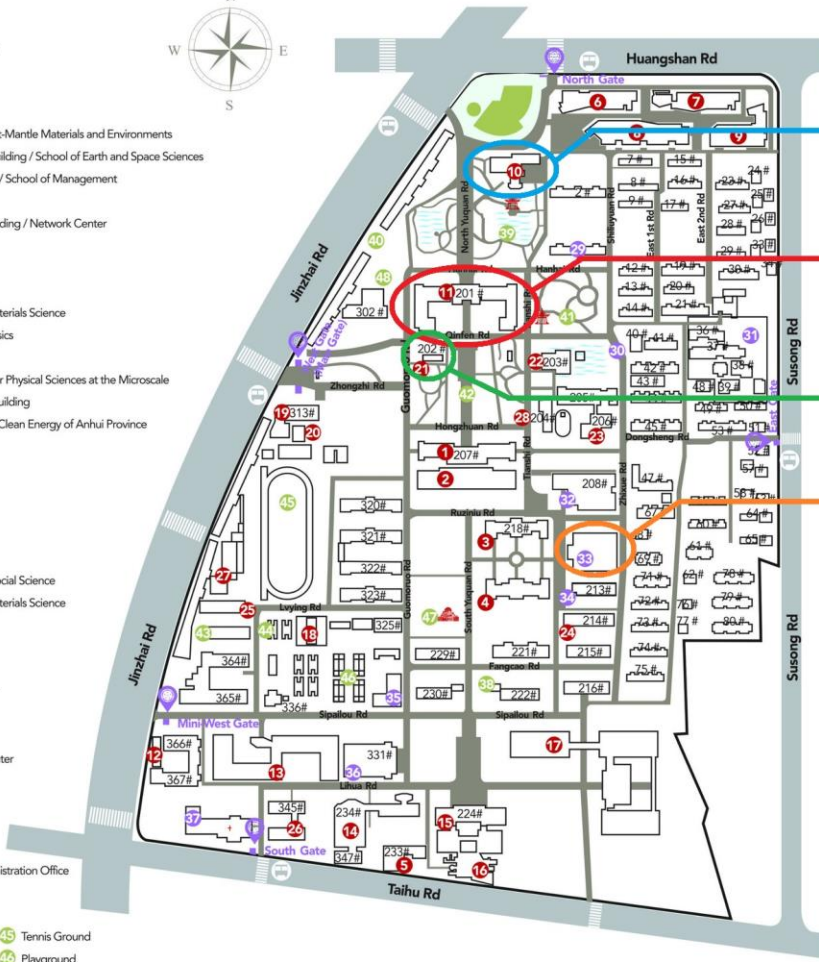
Located in **Hefei**,  
a rising **city for science and education**  
a “small” town moving to 10M population



**USTC**: founded in 1958, **elite research university** in China,  
ranking ~ 100 worldwide



- 1 Office Building / Old Library
- 2 Library
- 3 Administrative Building
- 4 History Museum
- 5 CAS Key Laboratory of Crust-Mantle Materials and Environments
- 6 Education Administration Building / School of Earth and Space Sciences
- 7 Management R&D Building / School of Management
- 8 Fifth Teaching Building
- 9 Education and Research Building / Network Center
- 10 Guest House
- 11 First Teaching Building
- 12 USTC Press
- 13 School of Chemistry and Materials Science
- 14 Department of Modern Physics
- 15 School of Physical Sciences
- 16 Hefei National Laboratory for Physical Sciences at the Microscale
- 17 Material Science Research Building
- 18 Key Laboratory for Biomass Clean Energy of Anhui Province
- 19 School of Physical Sciences
- 20 Ceramics Gallery
- 21 Art Gallery
- 22 H<sub>2</sub>O Auditorium
- 23 Second Teaching Building
- 24 Archive
- 25 School of Humanities and Social Science
- 26 School of Chemistry and Materials Science
- 27 Physical Education Building
- 28 School of the Gifted Young
- 29 Expert Apartment
- 30 Retired Staff Activity Center
- 31 Kindergarten
- 32 Dining Hall
- 33 Eastern Student Activity Center
- 34 Campus Shop
- 35 Student Service Center
- 36 Grand Auditorium
- 37 Hospital
- 38 Foreigners' Service & Administration Office
- 39 Yi Jian Pavilion
- 40 High-Tech Plaza
- 41 Pomegranate Garden
- 42 Tennis Ground
- 43 Guomorus Square
- 44 Playground
- 45 Badminton Hall
- 46 Statue of Willing Ox
- 47 Basketball Ground
- 48 Campus Bus Station



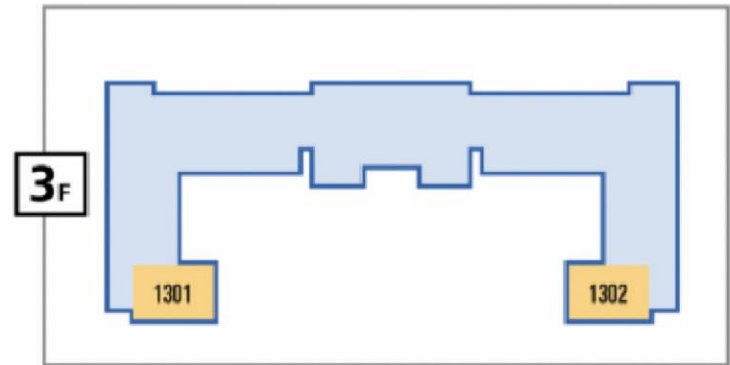
COPYRIGHT © 2018 Office of International Cooperation • All Right Reserved

Guest House (Lunch Buffet)

First Teaching Building

Coffee Shop

ATM



## Venue (1<sup>st</sup> Teaching Building)

- Lectures take place in Room 1302 on the 3rd floor
- Hand-on sessions will be in

**Room 1103 (Labs 1,4,8), 1117 (Labs 2,3,11)** on the 1st floor

**Room 1419 (Labs 5,6), 1423 (Labs 7,9), 1428 (Labs 10,12) and 1433 (Labs 13,14)** on the 4th floor

- Coffee breaks are at middle hall of 3<sup>rd</sup> floor

## Shuttle Bus

- Between the school hotel (BWP) and USTC
- Timetable under “Shuttle Bus” tab of website

## Lab Plan (by COC)

- Uploaded in [indico](#)
- You can get the printed version during coffee breaks

## WIFI

- Eduroam is available
- Lecture Hall has additional WIFI  
**SSID: FTCF2024-2, Password: ustc2024**



## **Local Transportation**

- If you stay in other hotels and/or want to explore the city
- Subway system
- Taxi/Bus/Walk (ask LOC/volunteers for information if needed)

## **Meals**

- Buffet Lunch is covered by school (2<sup>nd</sup> floor Guest House)
- Dinner is self-arranged except for Reception (19<sup>th</sup>), Banquet Table Dinner (24<sup>th</sup>), and Excursion Dinner (23<sup>rd</sup>)

## **Evenings**

- Free except for the abovementioned events
- Bar/restaurant streets close to BWP hotel
- Optional university activities possible (TBD)

## **Excursion on Sunday**

- Supported by USTC Office for International Cooperation
- A full program covering visits to museum, sight-seeing, and visits to Anhui University for Chinese Medicine

## **Labs and Lectures Evaluation (by COC)**

- Important for feedback ([LINK](#))

## **Other reminders**

- Raining session starts in Hefei (good to bring umbrella)
- Pay attention to traffic (in particular scooters) if exploring the city by walking
- Tap water usually not drinkable in China, so go for bottled water or hot water after boiling



# We wish all of you a nice stay in Hefei and a fruitful school experience!

## **Don't hesitate to contact us during the school:**

Either by approaching us at the venue, or by using the following contacts

Emily Dong (secretariat team):

+86 13956926112, skype: cid.27a47a9dcef87250,  
donggongxiu@ustc.edu.cn

Yusheng Wu (LOC):

+86 13866128031, wuyusheng@ustc.edu.cn

Qipeng Hu (LOC):

+86 15256050637, skype: qipeng.hu, qipeng.hu@cern.ch