

CERN OSPO OSSC Software @CERN

Victoria Huisman Sigcha

hello.victoria@outlook.ie

22 OCTOBER 2024



VHS presenting.

12-months tech. student @CERN

Fruit of labour ...

1. the OSPO logo
2. OSPO promo. Material
3. OSPO catalogue

Thanks for being here. 😊



AGENDA for today.

01

background

Brief reminder of the OSPO.

02

details

The design of the catalogue, in more detail.

03

conclusion

Summary and answering questions.



01

BACKGROUND

Axel Naumann spoke of the OSPO, 21 OCT.

WHO: CERN'S OSPO



”... the OSPO is *mandated to provide a catalogue of CERN’s open source* that is **accessible**, and **guide** interested (external) parties to opportunities, projects, and experts through the public catalogue ...”

CERN OSPO mandate

30/05/2023



GOALS of the catalogue.



OBJECTIVE

Developing an **public, searchable catalogue** for CERN's open-source software projects.

APPROACH

1	2	3
front-end	back-end	database
User-centred, accessible UI.	Simple to maintain, least effort.	Remains relevant for the long-term.



02

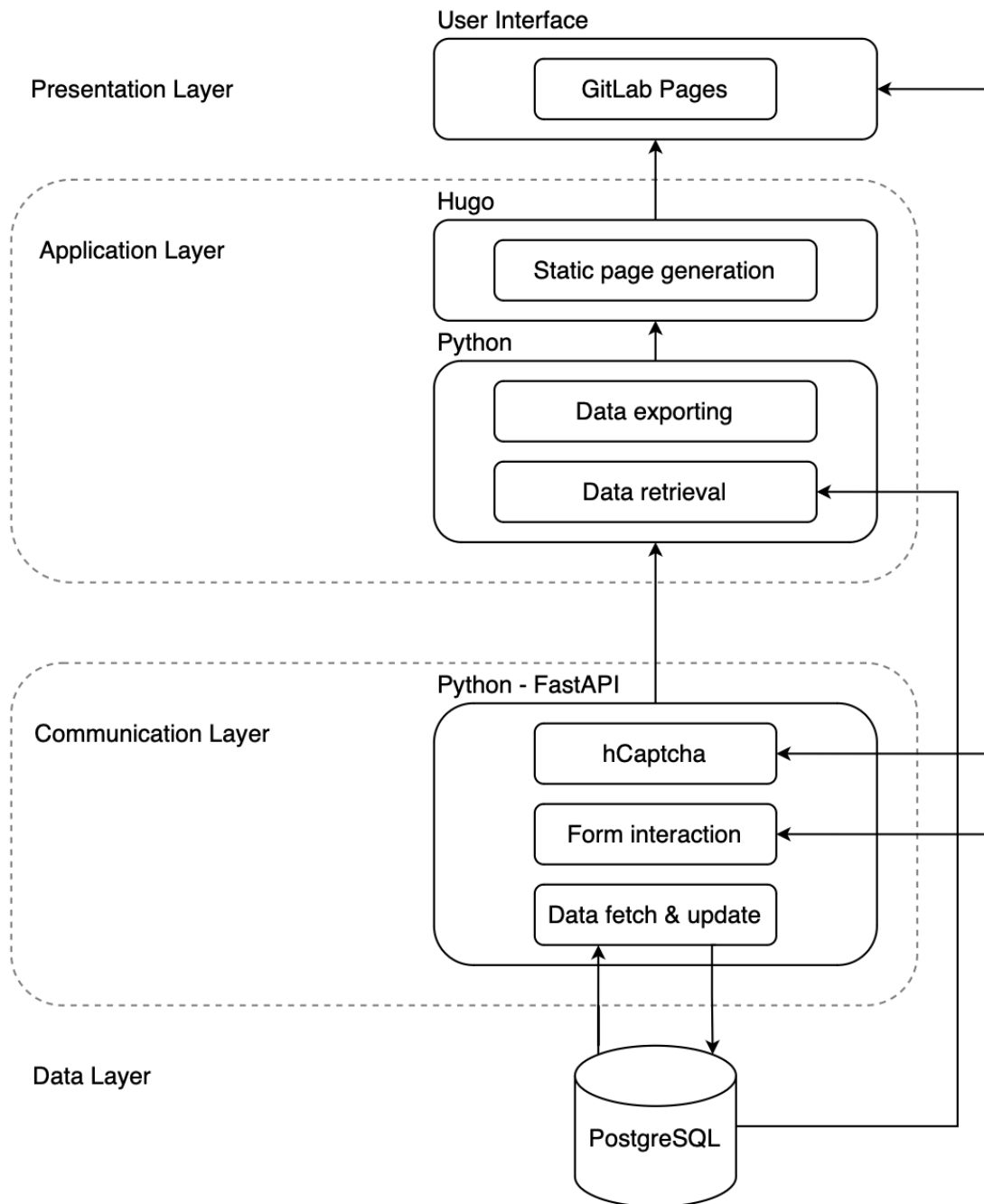
DETAILS

What makes up the catalogue?



CATALOGUE overview

Complete
overview of
the catalogue.



the FRONT-END

OBJECTIVE

search, filter, tags

essential info.

submission forms


content managing

The screenshot displays a web interface for searching repositories. At the top is a search bar with the placeholder text "Search Repositories ...". Below the search bar, two repository cards are shown. The first card is for "CAiMIRA", described as "CERN Airborne Model for Indoor Risk Assessment", with a red flame icon, "3 days ago", "500+" forks, and "5" stars. The second card is for "jens", described as "The Puppet librarian for those who collide particles.", with a circular refresh icon, "62 days ago", "352" forks, and "41" stars. Below the cards is a section titled "Repository link *" with a text input field containing "https://gitlab.cern.ch/...", https://github.com/...". Underneath is a hCaptcha verification area with an "I am human" checkbox and the hCaptcha logo. At the bottom is a black "Fetch" button.

the ISSUE

>> Project ready? Submit it!

An issue is created. The OSPO reviews it. And...

 **Approval Request: root**
#29 · created 4 months ago by OSPO Catalogue

Approved **Catalogue MR**

Approval Request: root Edit ⋮

🔒 Closed 📄 Issue created 4 months ago by OSPO Catalogue

```
id: 10994345
title: "root"
description: "The official repository for ROOT: analyzing, storing and visualizing"
repo_license: "other"
weburl: "https://github.com/root-project/root"
instancetype: GITHUB
thumbnail: ""
email: "test@gmail.com"
allow_contact: True
categories: GitHub, Department
tags: IT, KT
other_tags:
```

Add a to do »

0 Assignees Edit
None - assign yourself

Epic Edit
None

Labels Edit
Approved **Catalogue MR**

Milestone Edit
None

Iteration Edit
None

FRONT-END lifecycle

Fetching
information to-
and-from
database to a
static webpage.

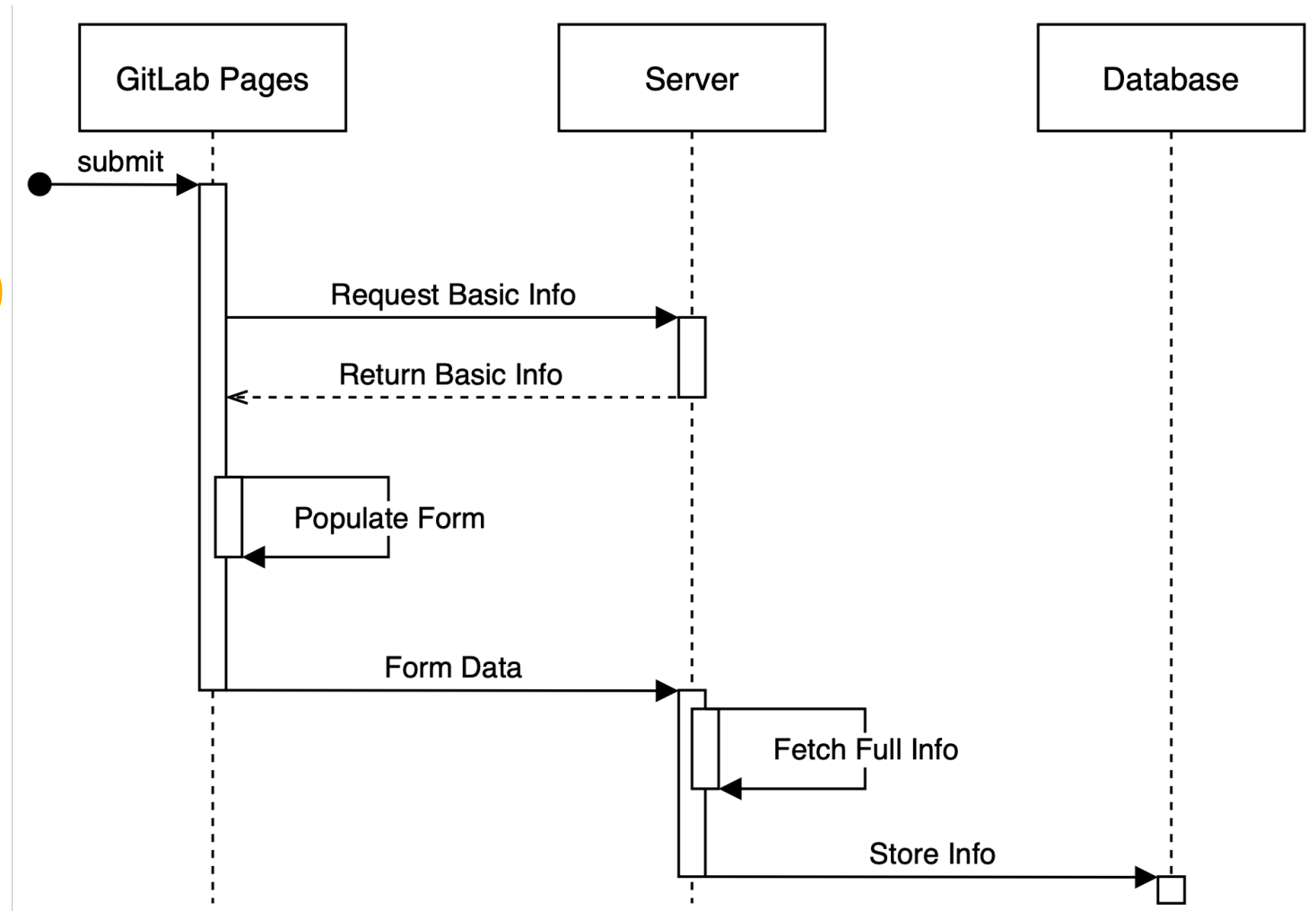


Fig. 8: Sequence diagram of the project submission form.

the **BACK-END**

1 **API integration**

Interactions between the client/UI and the API server.

2 **GitLab & GitHub data handling**

DataHandler classes for each instance required to retrieve and update any information for display.

3 **usage of CI/CD**

Pipelines help in keep code integrity and keep data fresh & up to date.

BACK-END lifecycle

Keeping all information on the catalogue fresh & up-to-date.

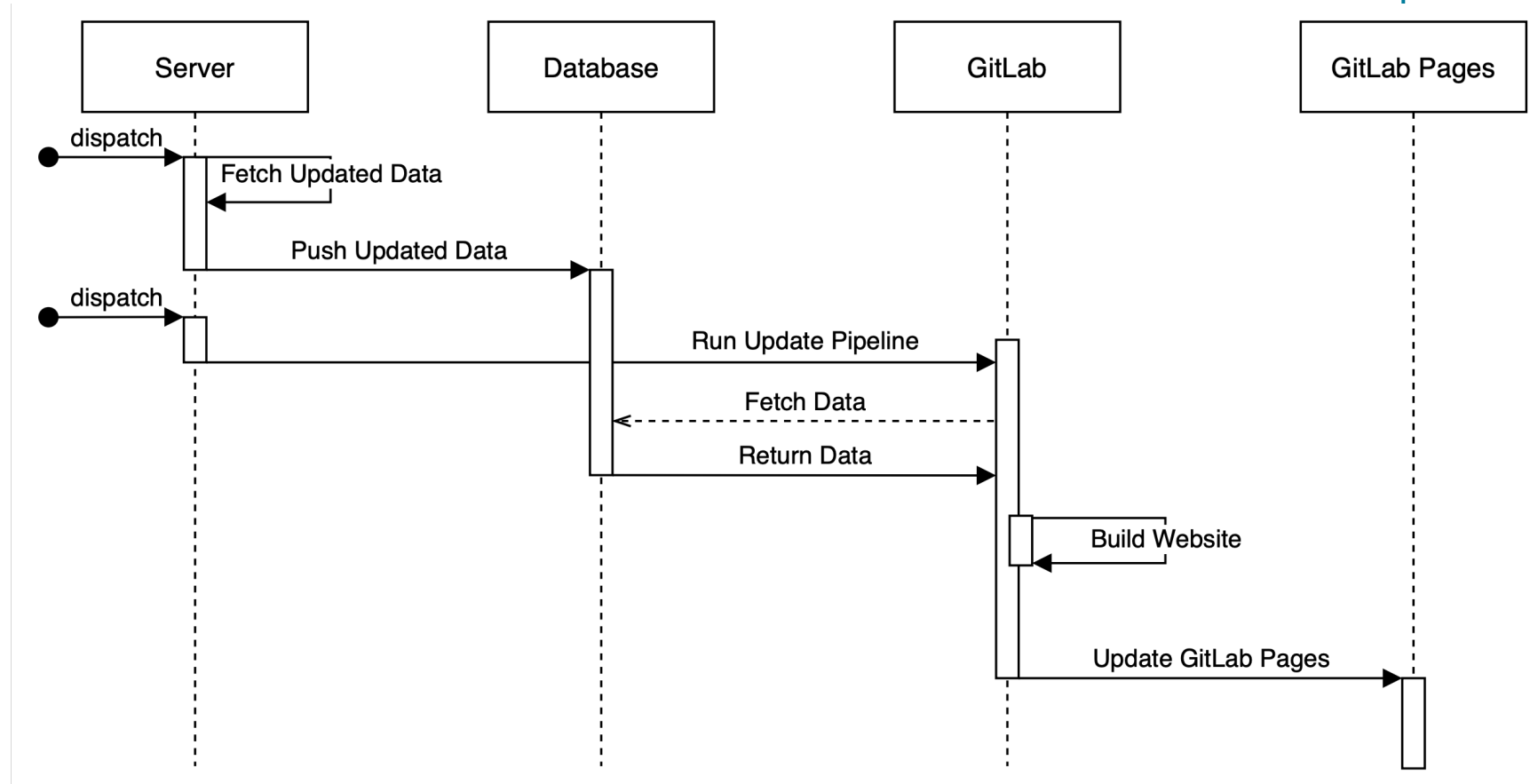


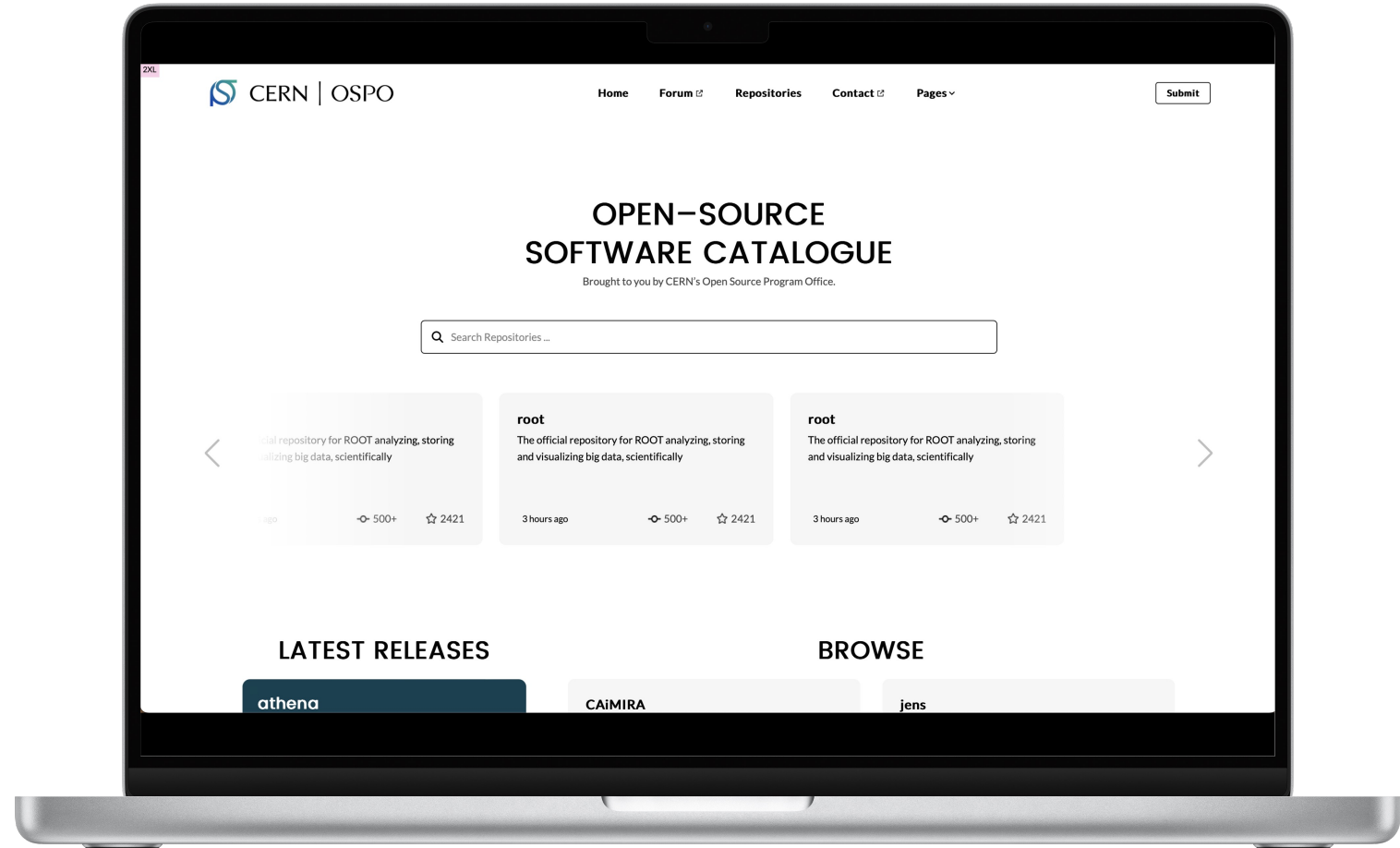
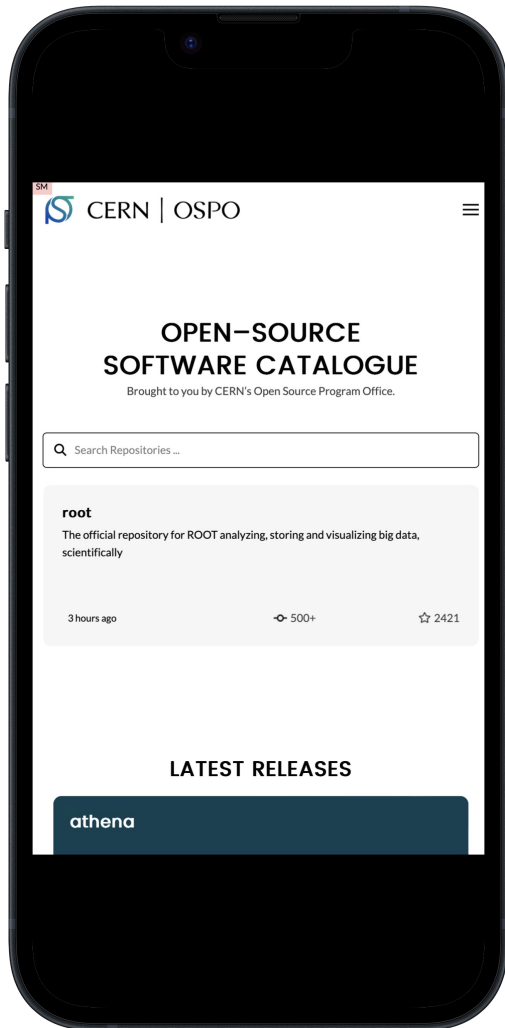
Fig. 9: Sequence diagram of the webpage's updating mechanism requirement.

03

CONCLUDING

Wrapping up, time for questions.





view on **ANY DEVICE.**

what the catalogue **IS**

a. A platform to bring exposure to your projects.

Consult the OSPO to get your project out there for the world to see.

b. A place to find similar projects, to build collaboration.

Build a better idea together – multiple minds have infinitely more potential than one.

c. A guide for external parties to find an interesting project.

To fund, to follow the development of, or to apply to their work.

what the catalogue **IS NOT**

a. **A public library of all existing open-source in the world.**

Made in CERN, for CERN. All projects go through the CERN OSPO.

b. **A holder of projects that exist in plentiful supply.**

The OSSC holds criteria for the projects that could be uploaded.

c. **Version control platform.**

Unlike GitHub or GitLab, the catalogue holds a copy (or card) of the source project.

”... the OSPO is *mandated to provide a catalogue of CERN’s open source* that is **accessible**, and **guide** interested (external) parties to opportunities, projects, and experts through the public catalogue ...”

CERN OSPO mandate

30/05/2023



THANKS!

QUESTIONS?

... contact the CERN OSPO

Open.Source@cern.ch

<https://opensource.web.cern.ch>

[OSPO forum \(CERN log-in\)](#)

... contact me

hello.victoria@outlook.ie

