

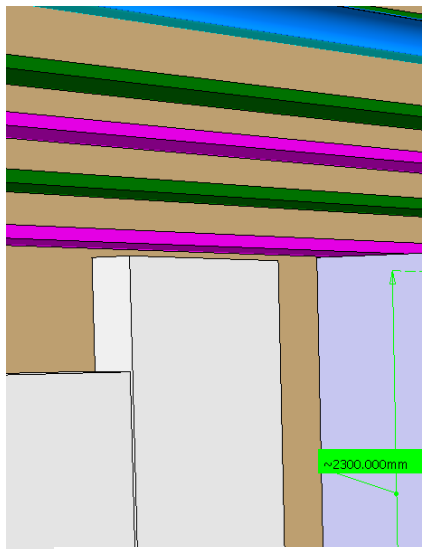


Civil Engineering at R2E

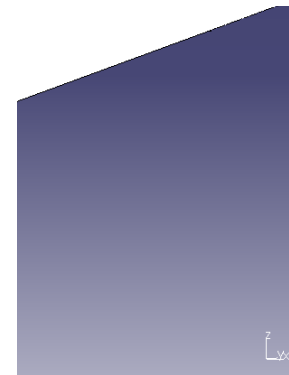
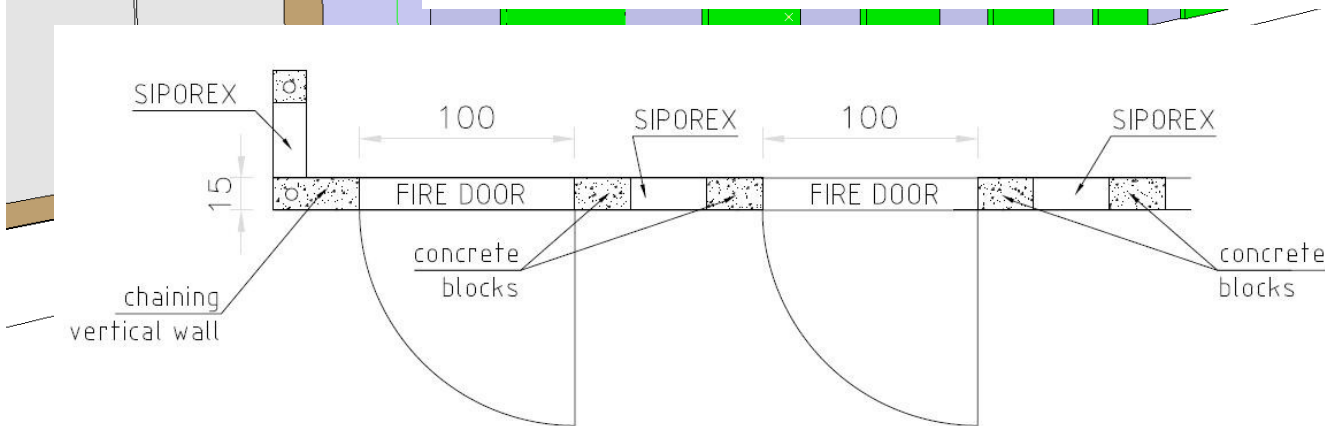
07/04/2011

Juny Crespo

- Safe room at point 5 (UJ561)



Chaptre	Désignation	Montant CHF
100	INSTALLATION DE CHANTIER	17113
200	STRUCTURE EN BETON CELLULAIRE	16237
300	CHAPE	1950
400	TRAVAUX DE SERRURERIE	32400
500	DIVERS	17300
	TOTAL BRUT	85000



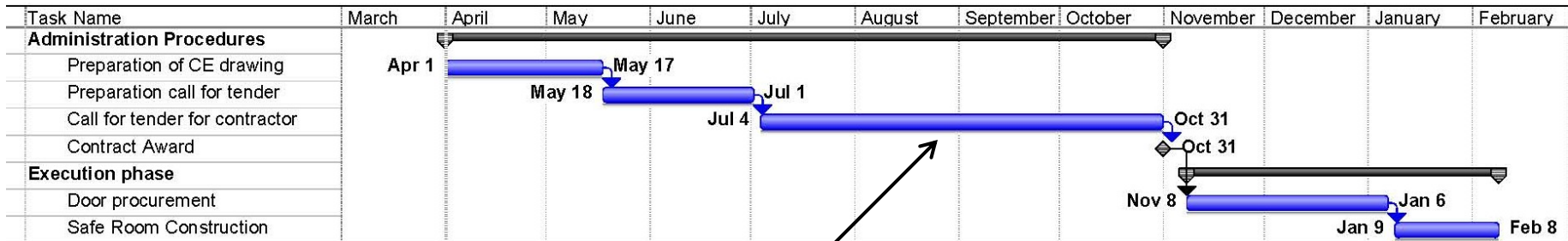


Civil Engineering at R2E



- Safe room at point 5 (UJ561)

Market survey is **NOT** required



Flexible task!

We have a comfortable planning, and if needed we could shorten it.

