

NaI ν ETe

Magnificent CE ν NS 2024

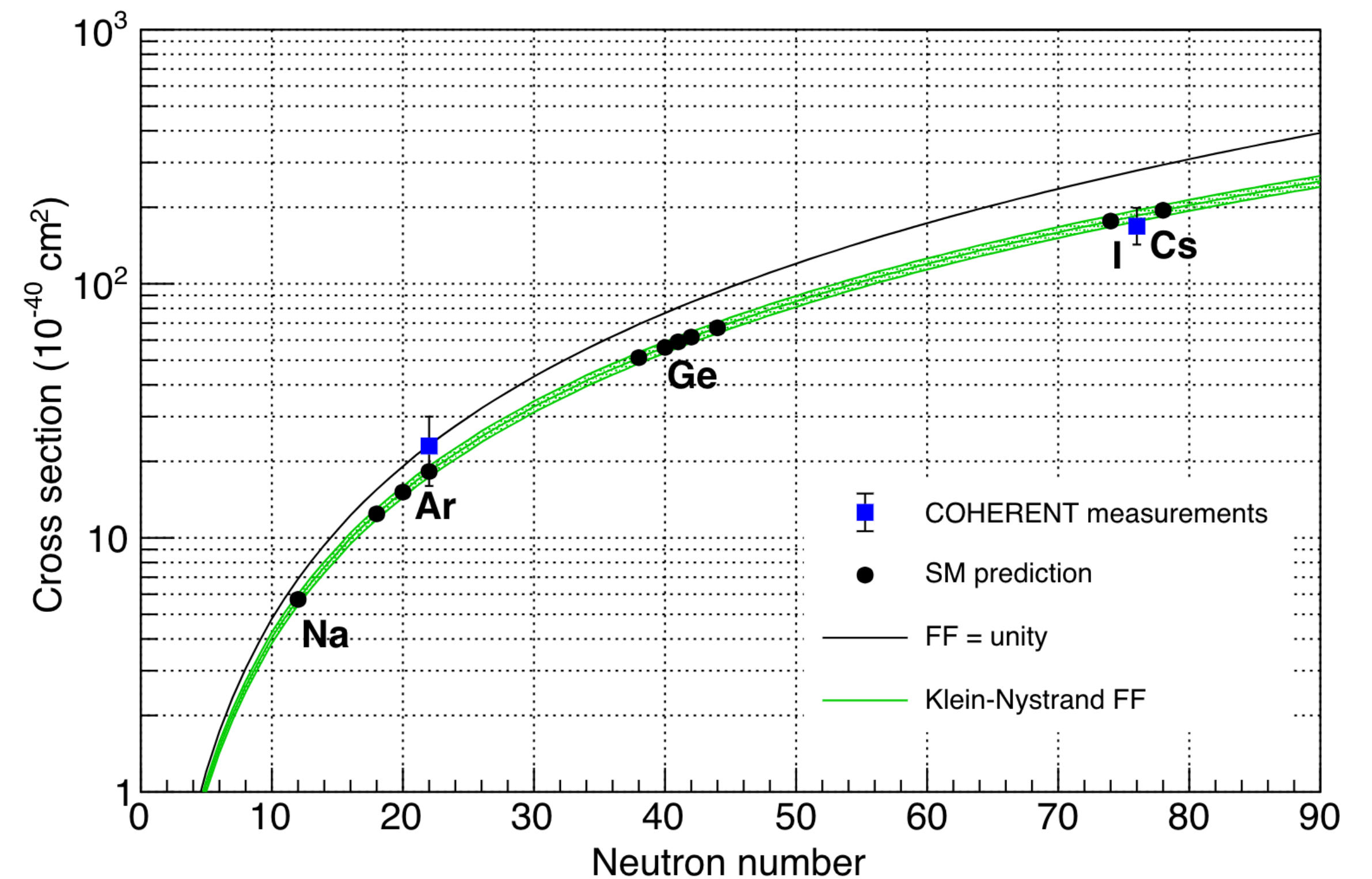
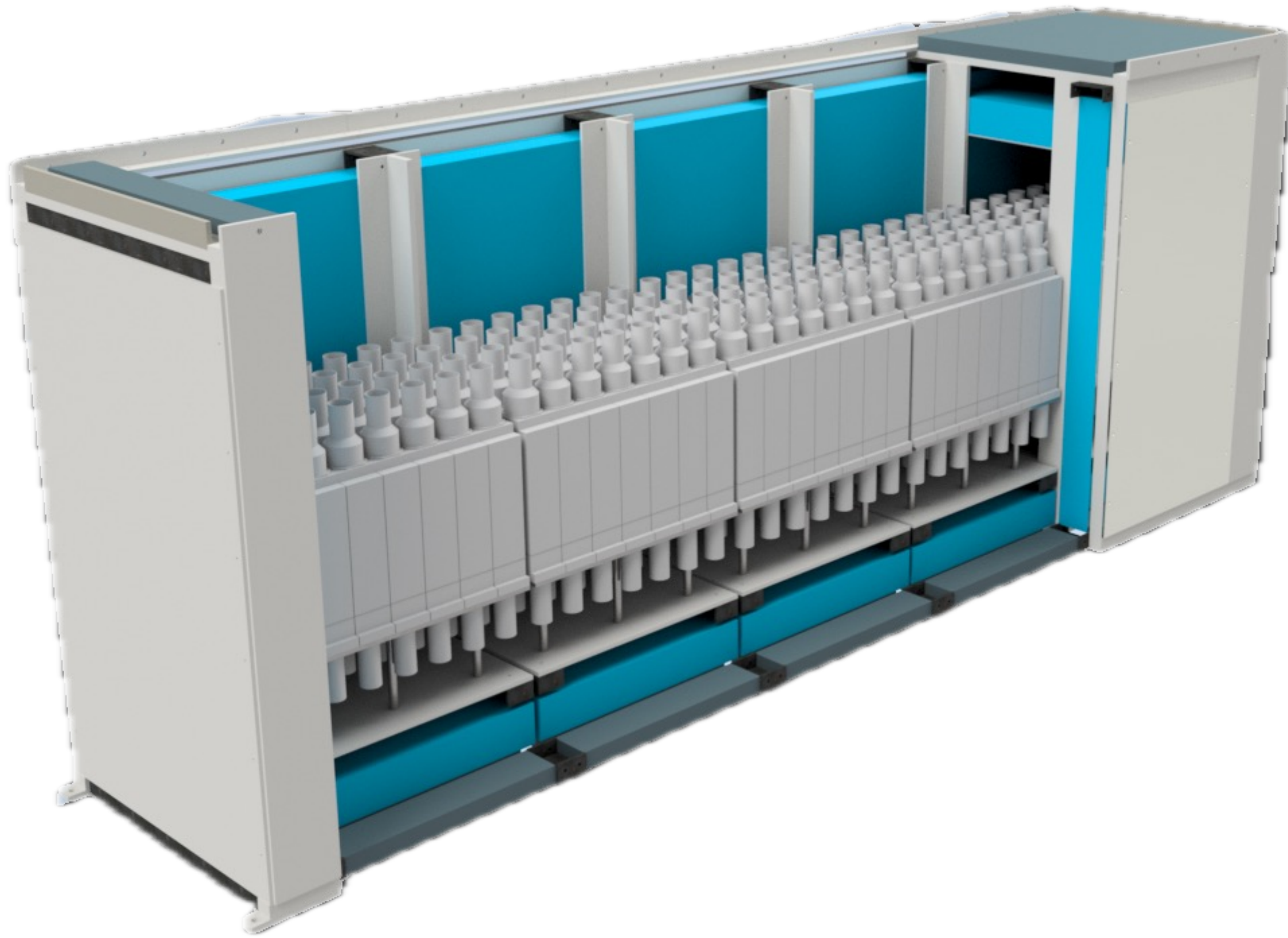


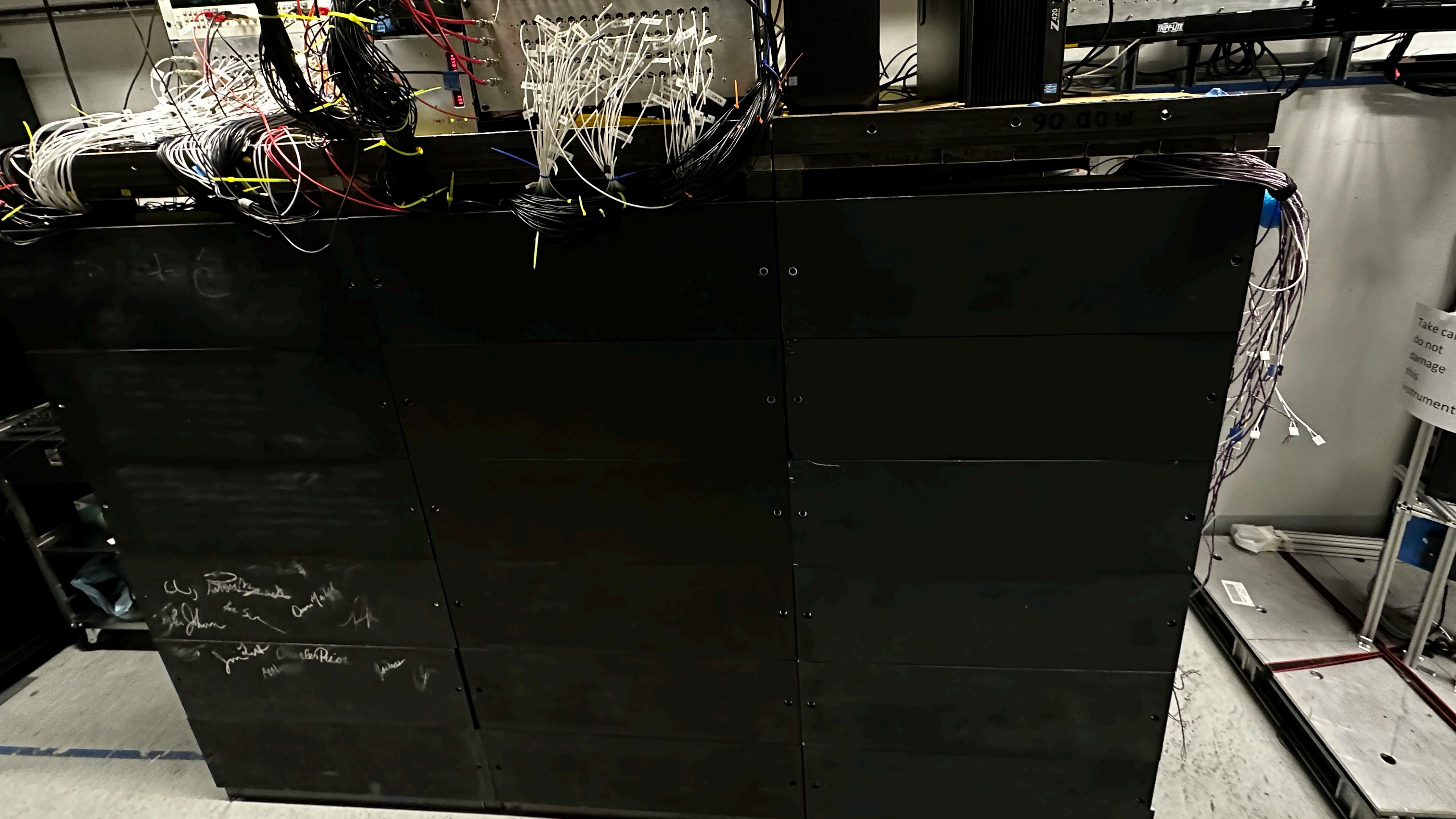
1. GREAT MINDS
2. BEAUTIFUL PEOPLE
3. IMPECCABLE SCIENCE

NaI ν ETe

- **Lightest** of COHERENT's planned CE ν NS targets
 - Lower CE ν NS cross section
 - Higher energy nuclear recoils
- **Sensitive to both CC and NC** interactions:
 - Flavor-dependent and flavor-independent processes

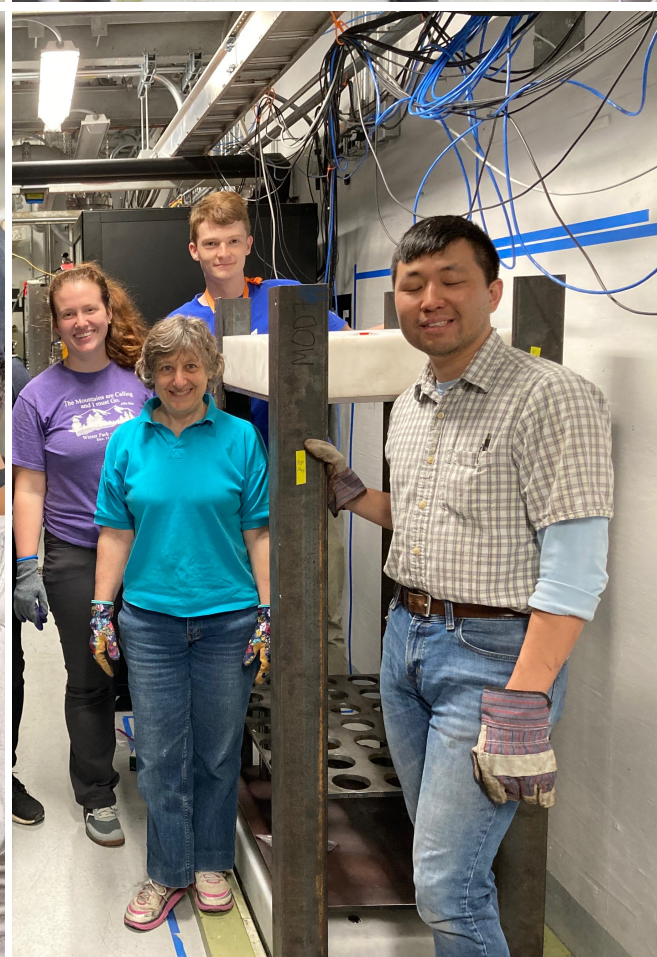
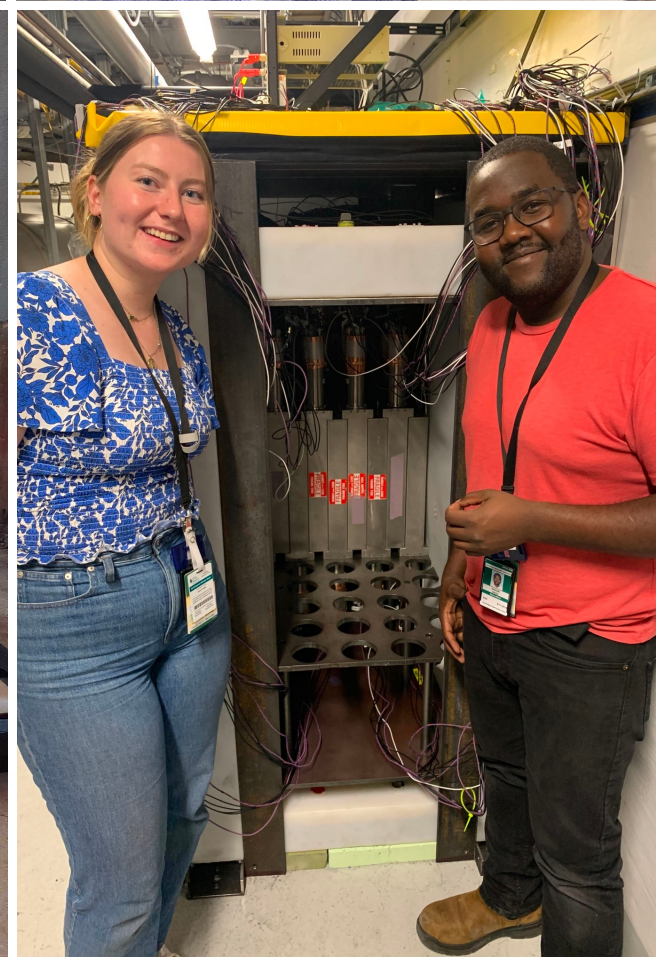
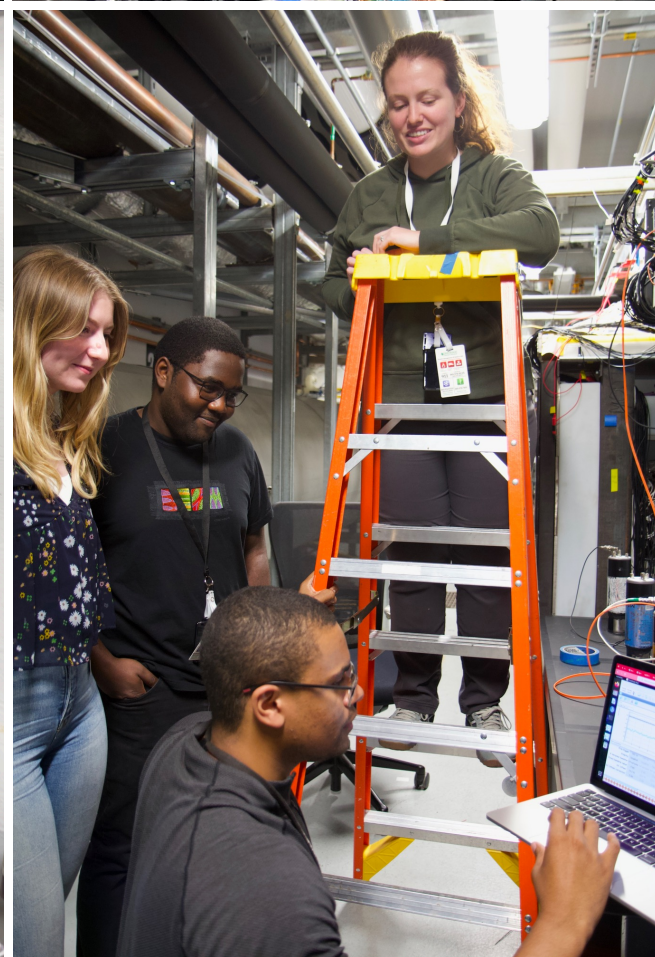
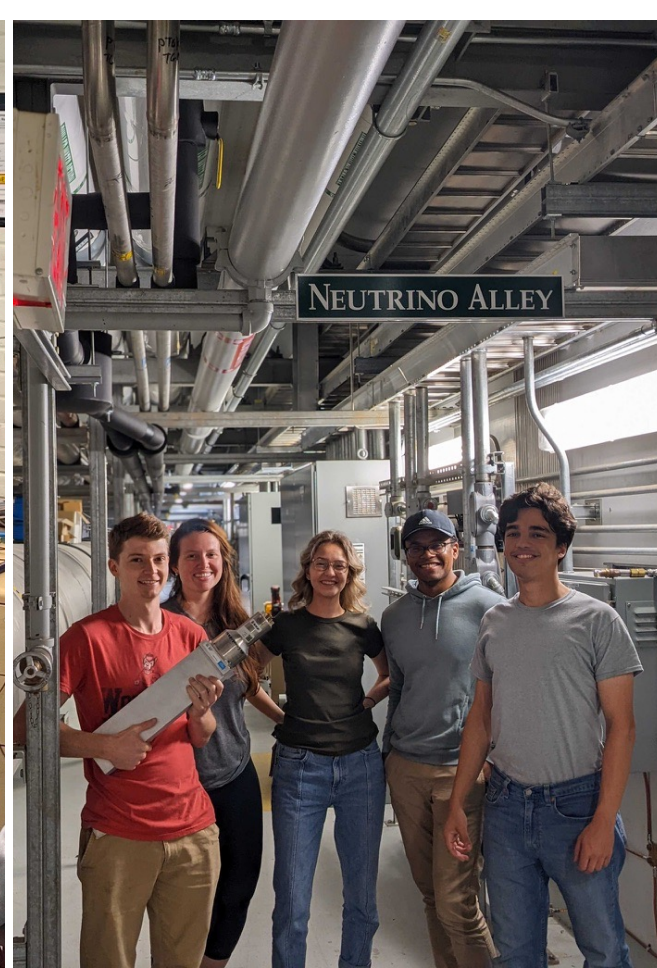
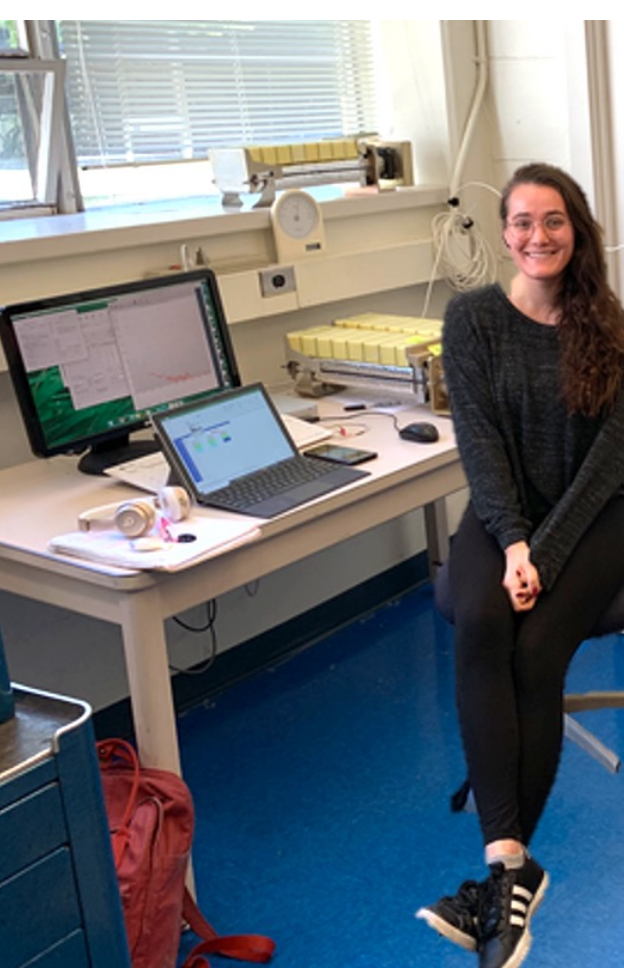
- **2425** kg of NaI[Tl] crystals
 - 7.7 kg per crystal
- **364** channels:
 - How do you get so many channels to act as a single detector?





Handwritten text on the left side of the rack:
Ch. 1, 2, 3, 4, 5, 6, 7, 8, 9, 10, 11, 12, 13, 14, 15, 16, 17, 18, 19, 20, 21, 22, 23, 24, 25, 26, 27, 28, 29, 30, 31, 32, 33, 34, 35, 36, 37, 38, 39, 40, 41, 42, 43, 44, 45, 46, 47, 48, 49, 50, 51, 52, 53, 54, 55, 56, 57, 58, 59, 60, 61, 62, 63, 64, 65, 66, 67, 68, 69, 70, 71, 72, 73, 74, 75, 76, 77, 78, 79, 80, 81, 82, 83, 84, 85, 86, 87, 88, 89, 90, 91, 92, 93, 94, 95, 96, 97, 98, 99, 100

Take care
do not
damage
this
instrument



Where is the
Impeccable
Science?