

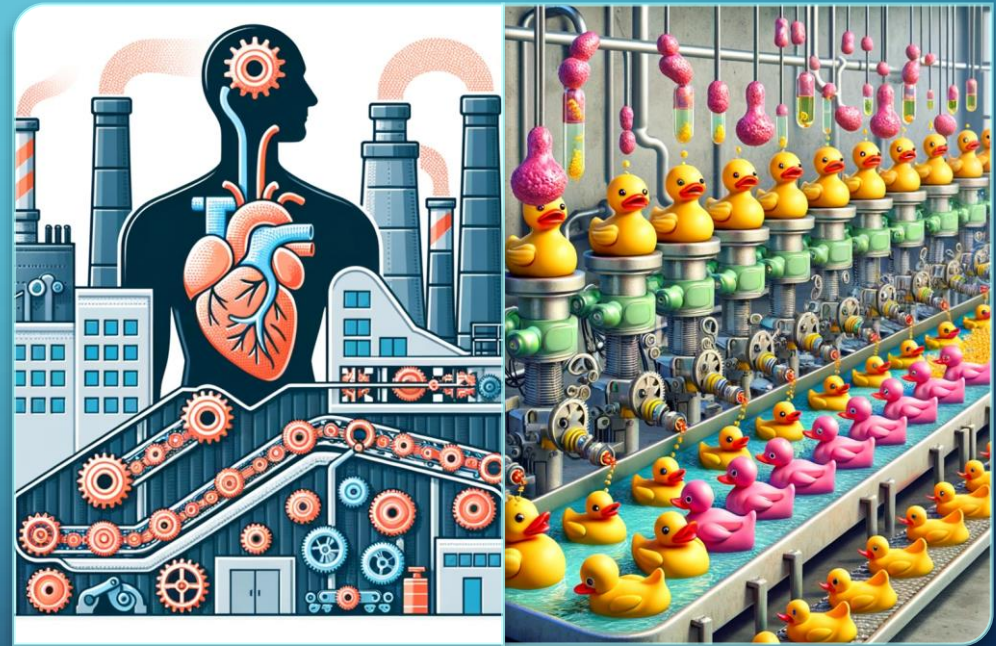
EXPLAINING CANCER

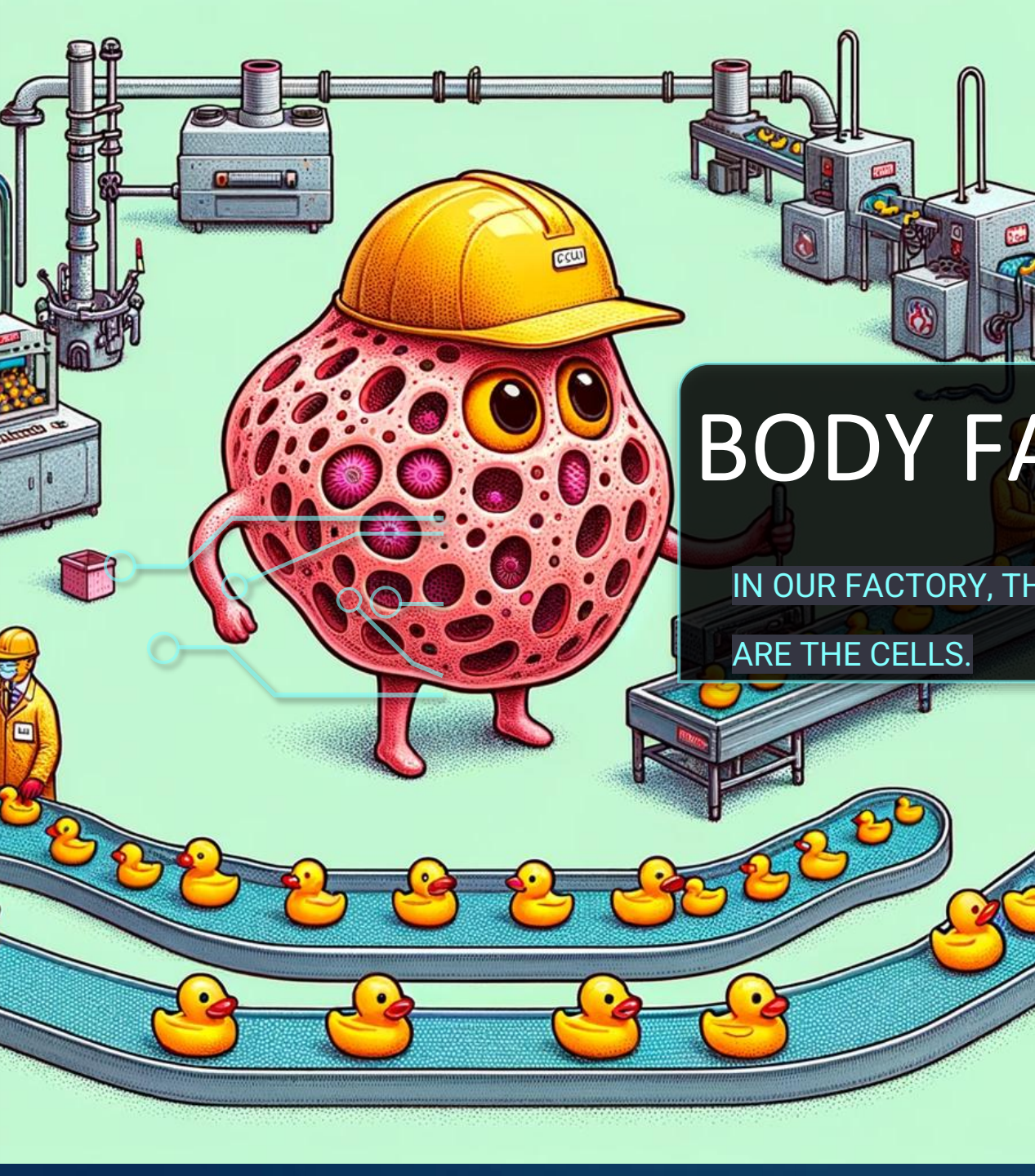
- Jean-Charles GIMENEZ, Oncology Nurse at the Geneva Cancer League

CERN, 1.02.2024

A Simple and Pictorial Approach

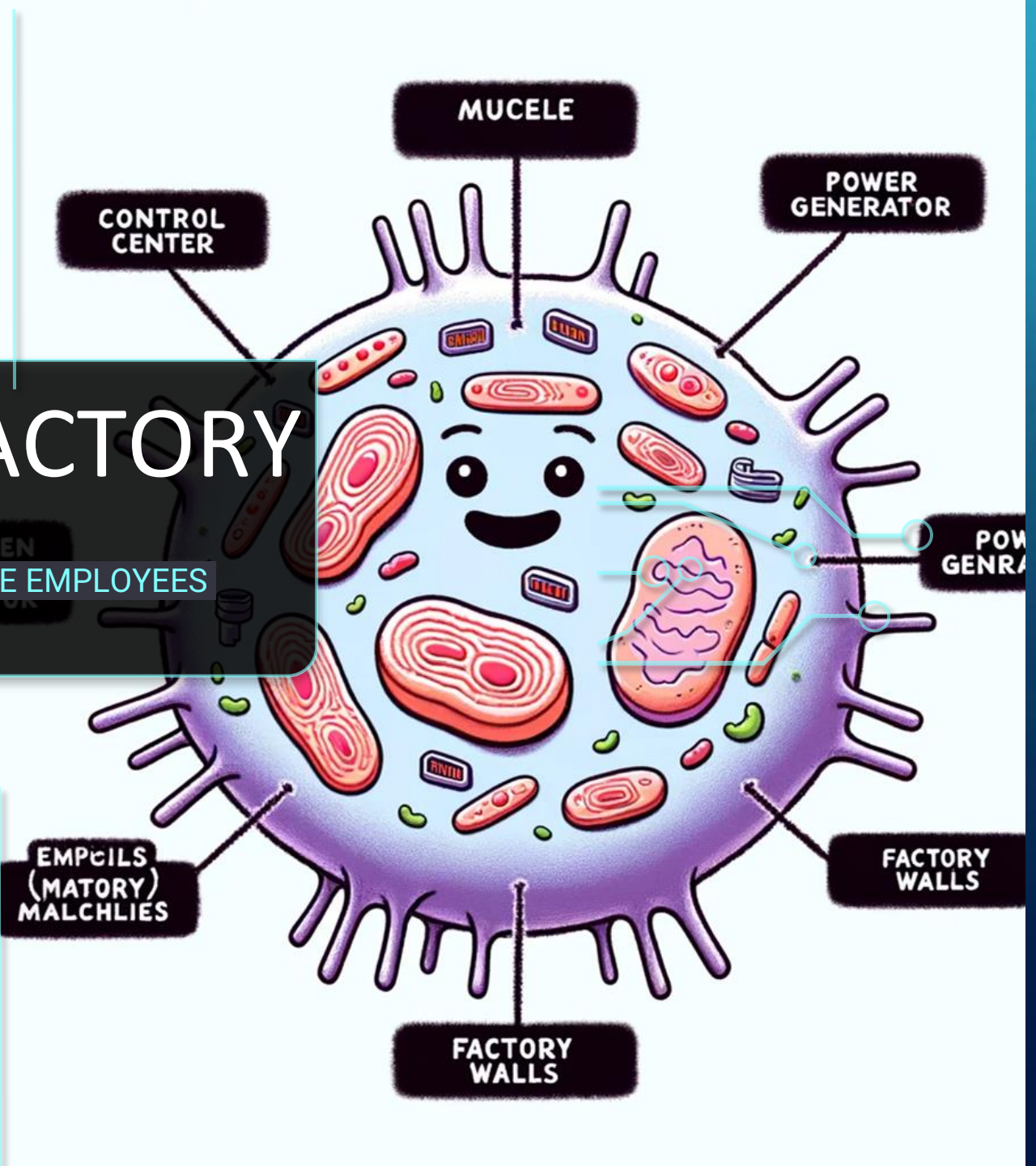
- Our body is like a "factory" for producing cells.
- Imagine this factory manufacturing... plastic ducks.

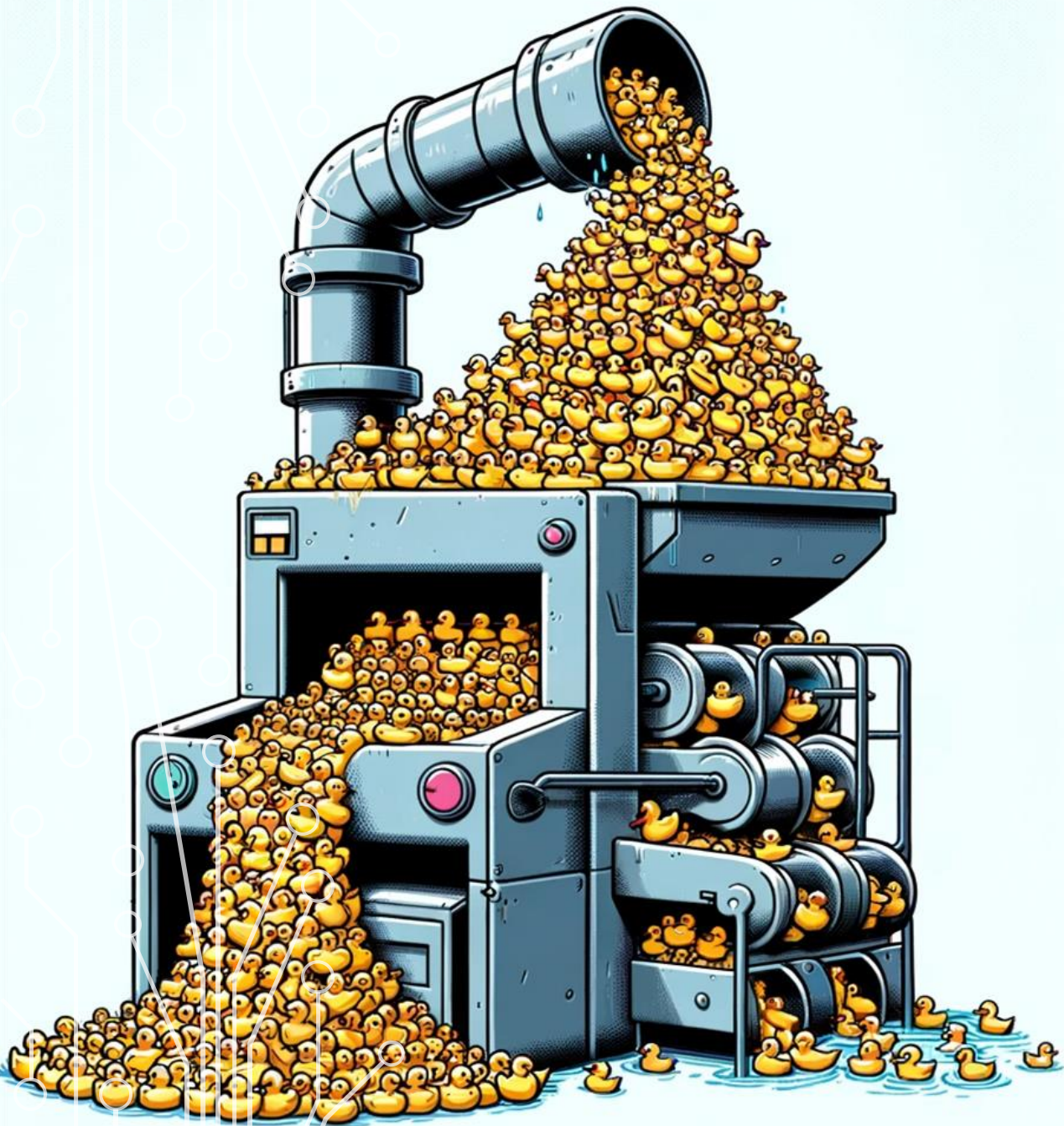




BODY FACTORY

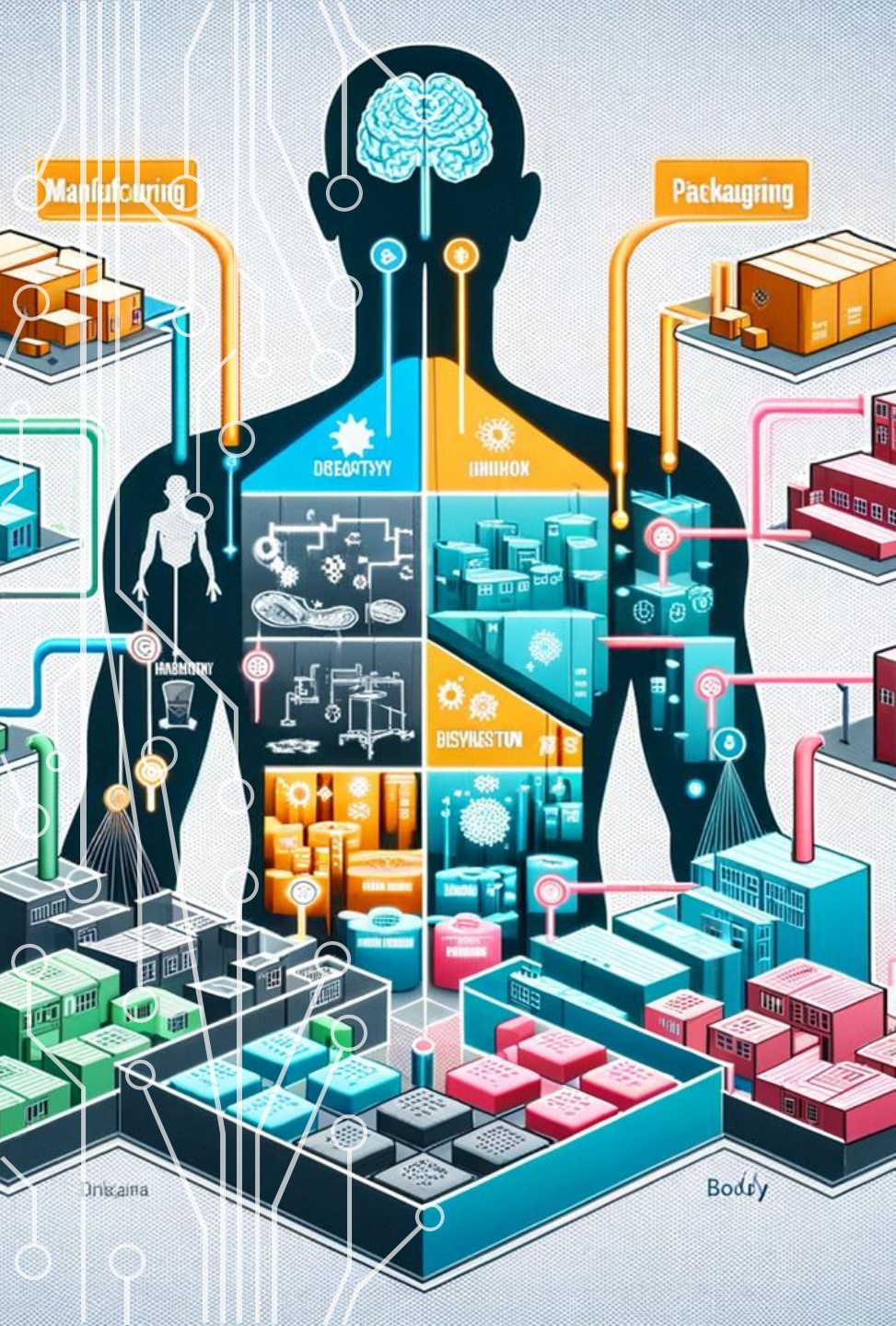
IN OUR FACTORY, THE EMPLOYEES
ARE THE CELLS.





DYSFUNCTION

- But one day, without warning, a machine goes haywire, overproducing ducks, symbolizing the disruption of the manufacturing process, similar to the emergence of a cellular pathology.
- The extra ducks accumulate, creating a blockage, that is, a tumor.



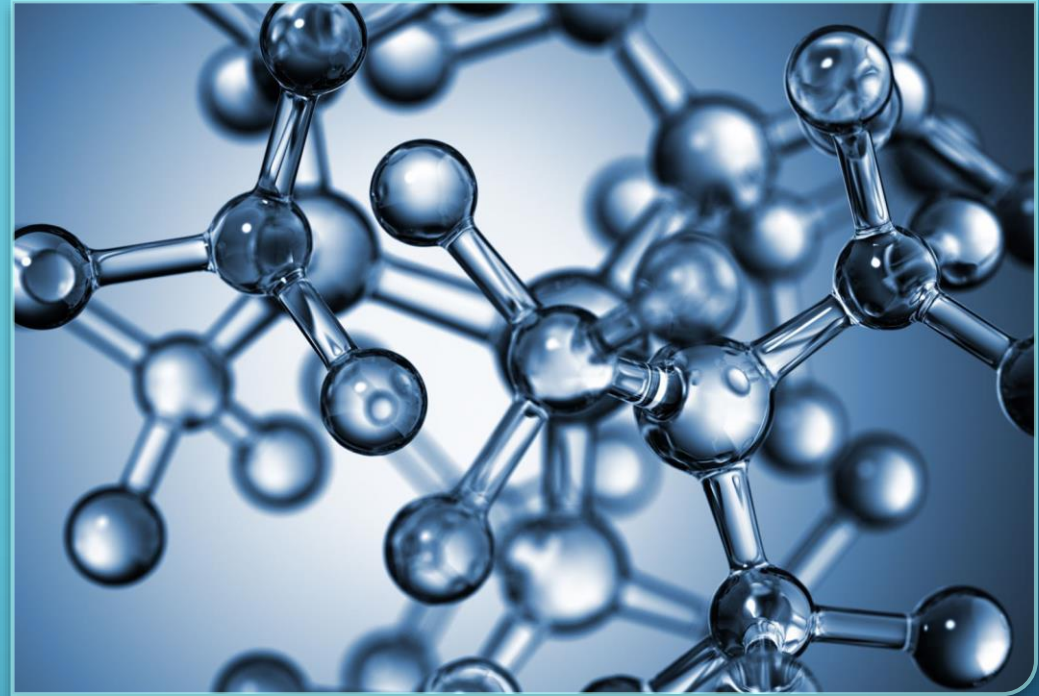
DIFFERENT LOCATIONS

- This anomaly can occur in any section of the factory. Normally, the foremen detect and eliminate the defective product. However, sometimes these defective products escape surveillance for various reasons.

OVERFLOWS

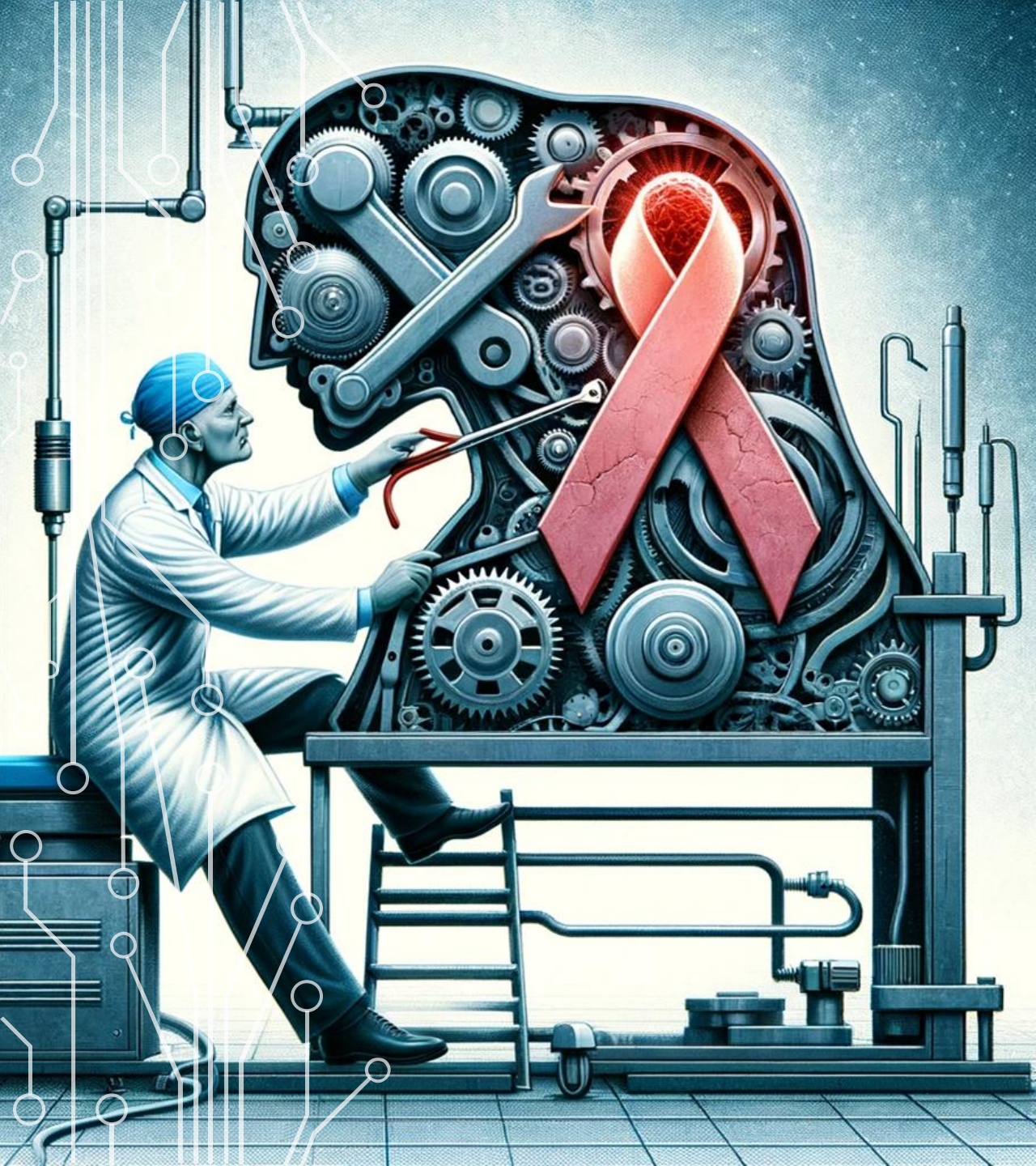
- Just as a factory has multiple departments, cancer can affect different parts of the body.





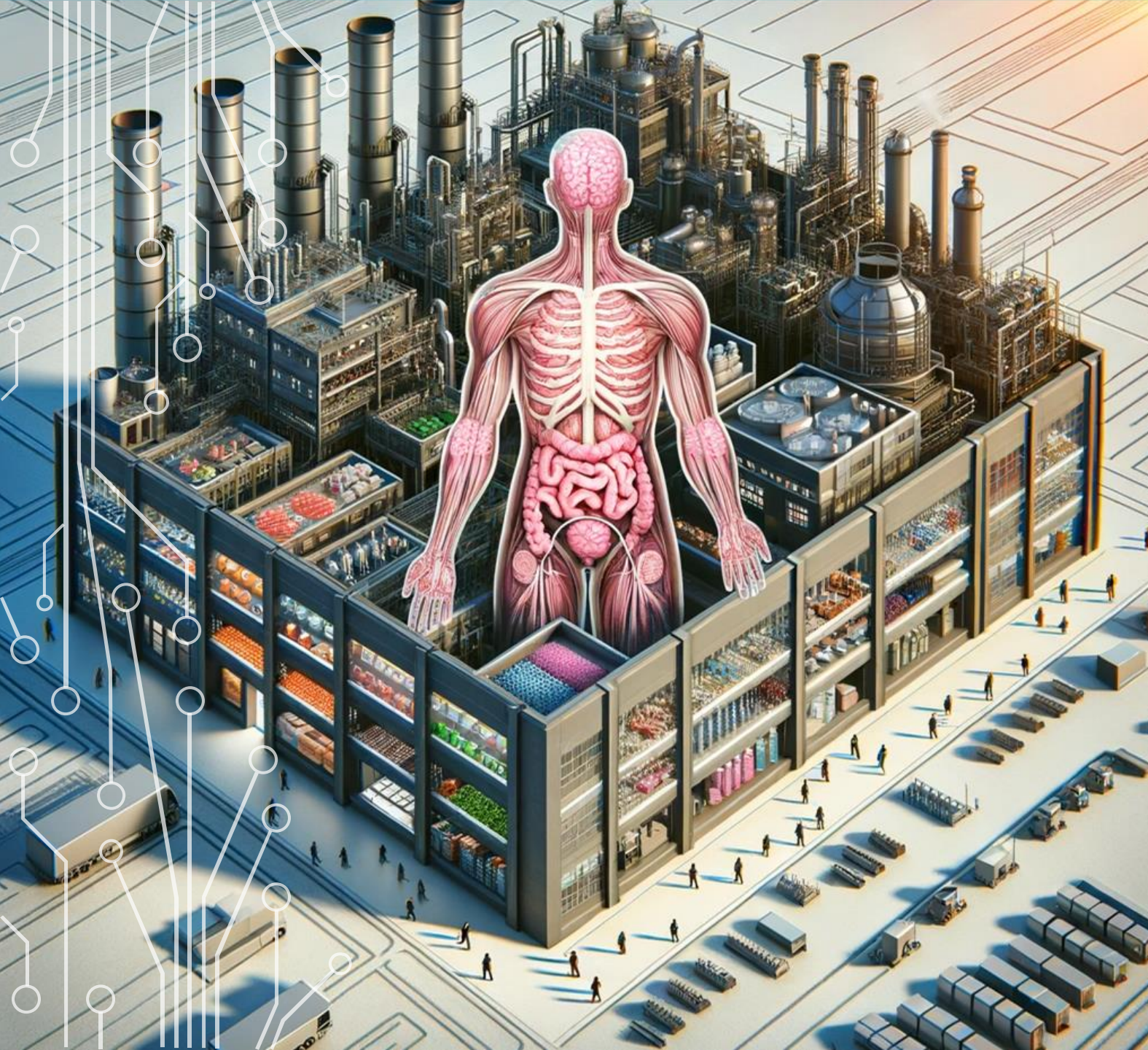
CAUSES OF MALFUNCTION

The causes can be external (pollution) or internal (genetic programming errors).



TREATMENTS

- Doctors and the entire medical care team are like technicians who diagnose and repair the faulty machine.



TAKING CARE OF ONESELF / OF ONE'S FACTORY

- Regular Check-ups
- Physical Activity