

Research infrastructure funding at the Swedish Research Council

An introduction

Mattias Marklund

Secretary General, Natural and Engineering Sciences





**The Swedish Research Council
is Sweden's largest governmental
research funding body.**

**We fund research and research
infrastructure in all scientific
disciplines.**

8

SEK billion

6,000

applications

8

**principles for
assessment**

900

**review panel
members**

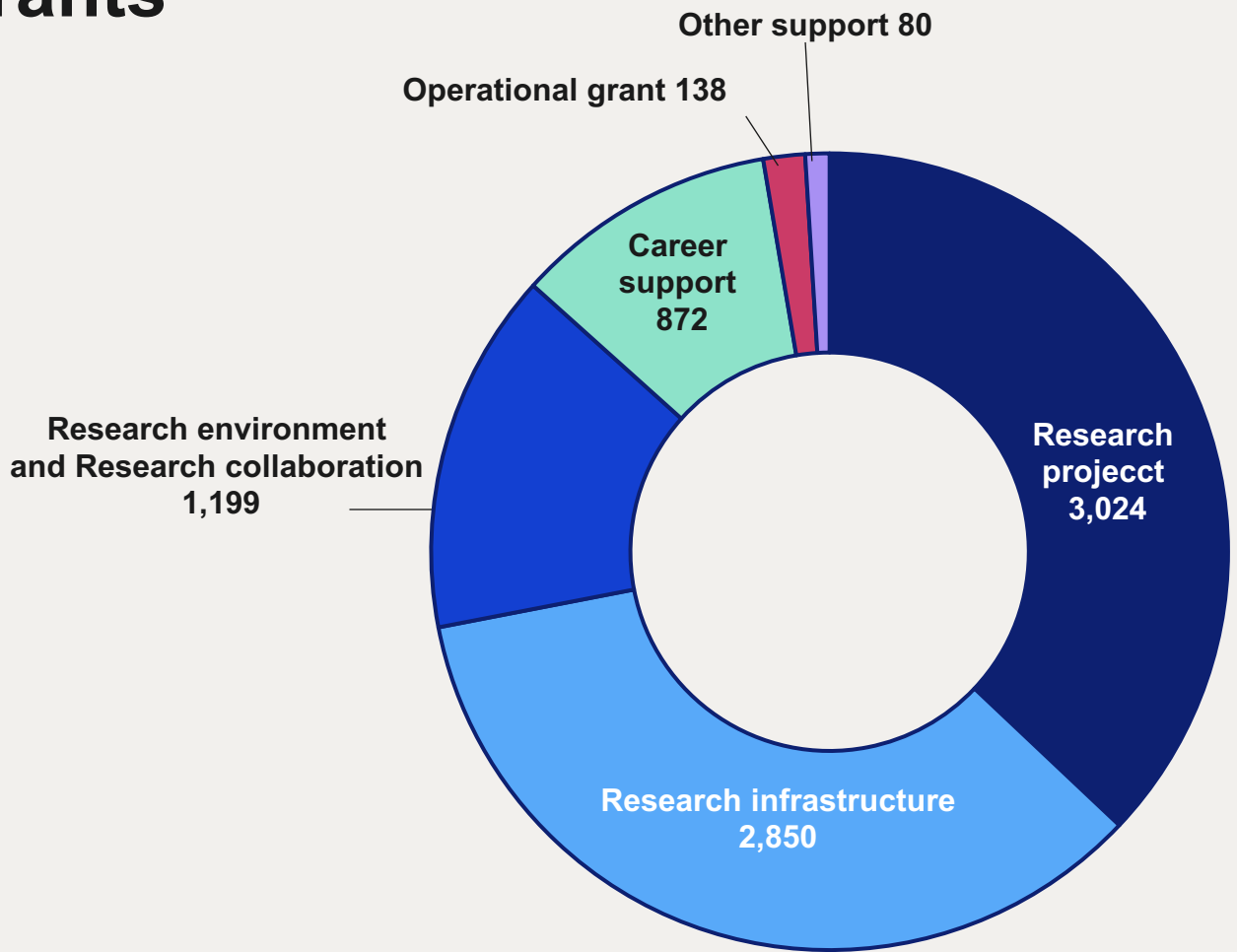
80%

**to researcher-initiated
research**

Distribution of forms of grants 2023

The Swedish Research Council finances just over a tenth of the research at higher education institutes.

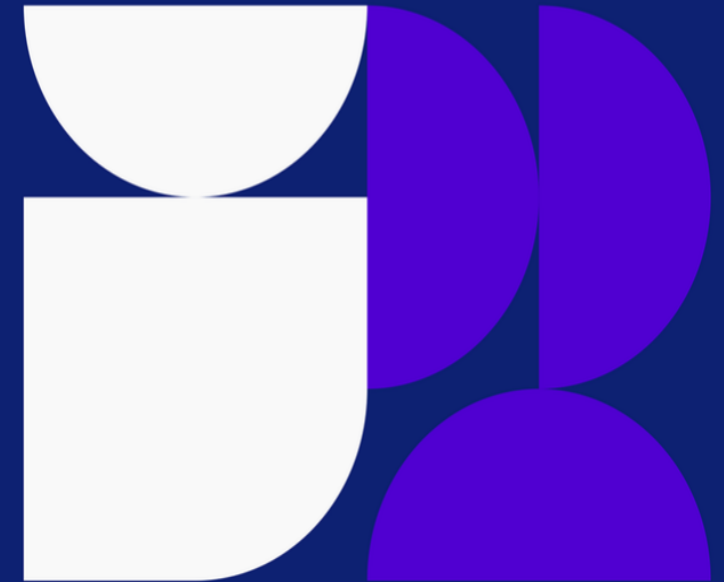
Distributed research funding 2023:
SEK 8.2 billion



The council for research infrastructure (RFI)

- Make inventories and prioterise the need of research infrastructure in Sweden.
- They have the responsibility for calls in the research infrastructure area.
- RFI takes decision on which applications to approve.
- Work strategically on developing handling, prioterization and funding of infrastructures.

The Swedish Research Council's guide to research infrastructure 2023



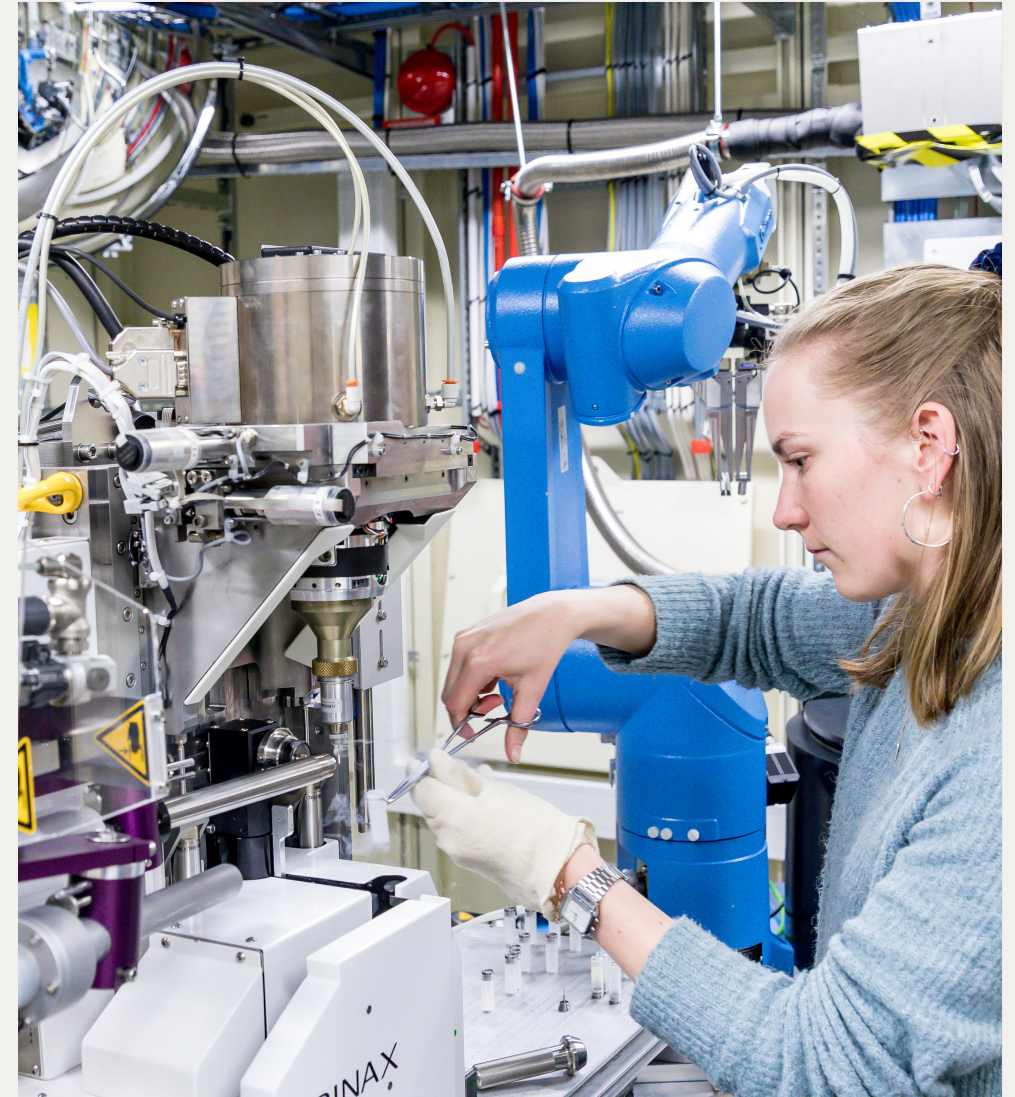
The Swedish infrastructure landscape

- The budget for research infrastructures in 2024 is billion 2.85 SEK.
- International memberships is mainly paid in foreign currency, why it is sensitive to fluctuations in conversion rates.
- MAX IV and NAISS are larger infrastructure funded outside calls.
- Funding measures based on calls encompass the regular call for infrastructures of national interest and targeted calls.



MAX IV Laboratory

- The construction phase has been finished and 16 beamlines running
- PRISMAS – PhD program (EU funded)
- MAX4MINT – STEM programme for 8th-grade students (funded by Swedish Research Council)



BioMAX beamline
Photo: Uwe Mueller

European Spallation Source

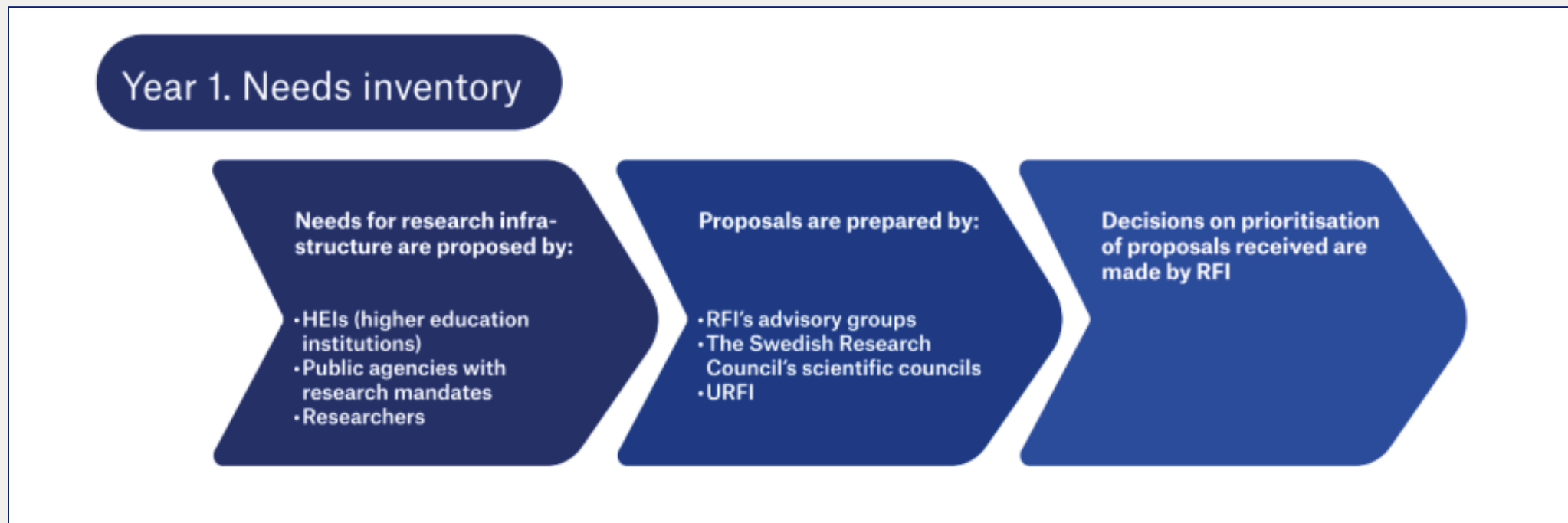
Ongoing in Sweden:

- European flagship project
- ERIC with 13 member states, Sweden and Denmark are host states.
- Under construction. Operation start 2028. Instrument installations started.
- ESS is truly collaborative with in kind partner labs all over Europe.

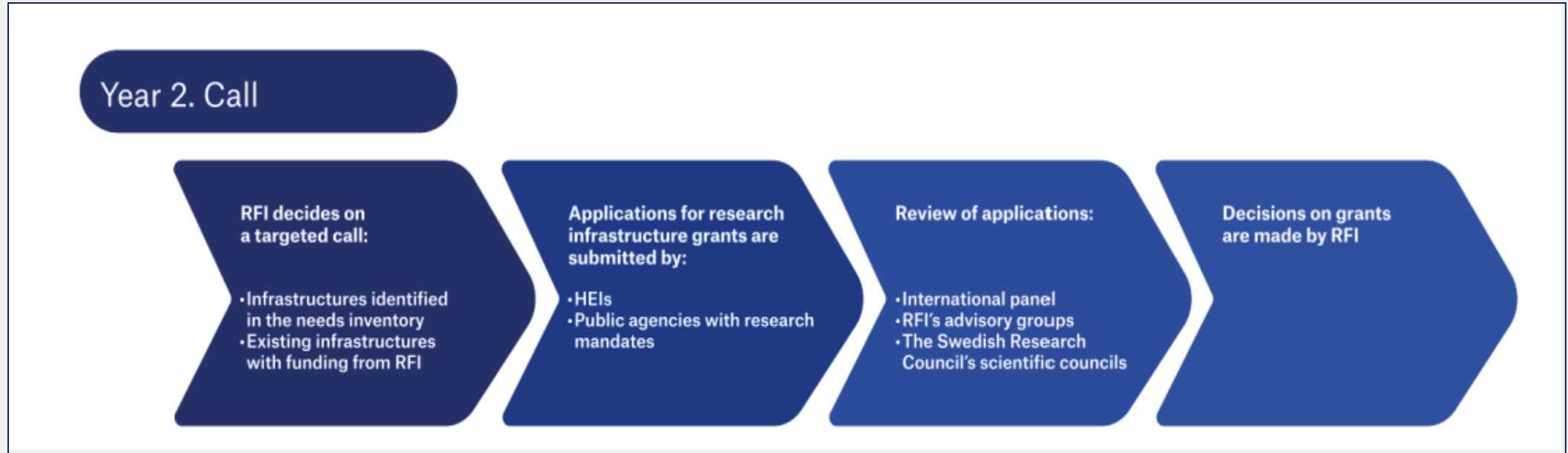


Target wheel
Photo: ESS

How national research infrastructure is handled



How national research infrastructure is handled



Additional funding schemes

- Funding schemes that can be initiatives from the research bill, SRC board or RFI.
- RFI have had a call from grants for increased accessibility of research infrastructures, 48 projects where granted; 13 related to SciLifeLab, 9 to ESS and 17 to MAX. Highly appreciated to increase a broader engagement in infrastructures.
- Other initiatives include: EuroHPC, ESS in-kind, biobanking.

Challenges for the Swedish Research Council

- Budget constraints
- The relation between national and international research infrastructures
- Farseeing funding decision
- Prioritization in the call for infrastructures of national interest – portfolio that satisfies the need in different research areas
- Balance funding to new and old infrastructures, balance funding in national and international infrastructures
- Ensure up-to-date access to infrastructures for all research areas

Conclusion

- The Swedish Research Council intends to develop the processes around research infrastructure funding
- Long-term conditions for the infrastructures are important
- National and international infrastructures
 - optimise the landscape



Thank you!

