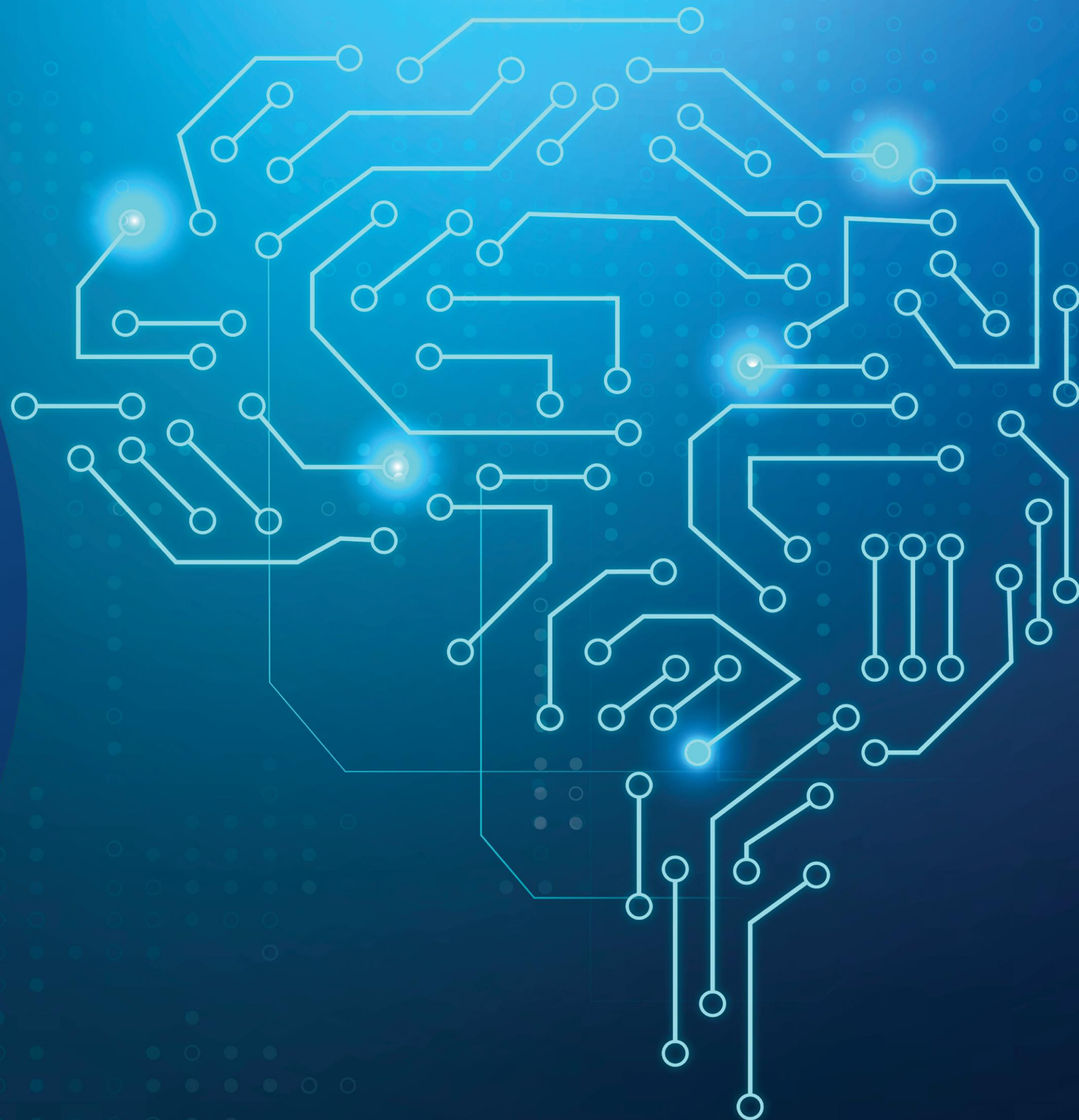




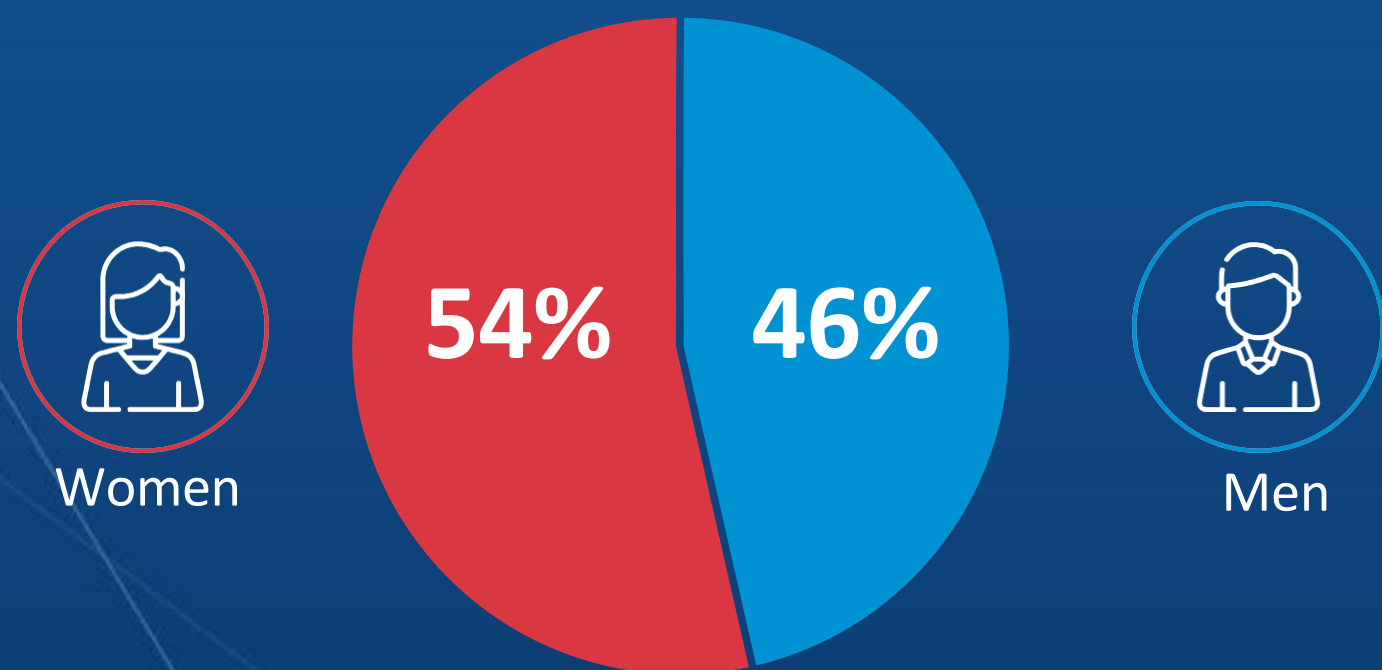
Republic of Serbia

MINISTRY OF SCIENCE,
TECHNOLOGICAL DEVELOPMENT
AND INNOVATION

Vukašin Grozdić
State secretary



Researcher Gender Structure, Nitra Source



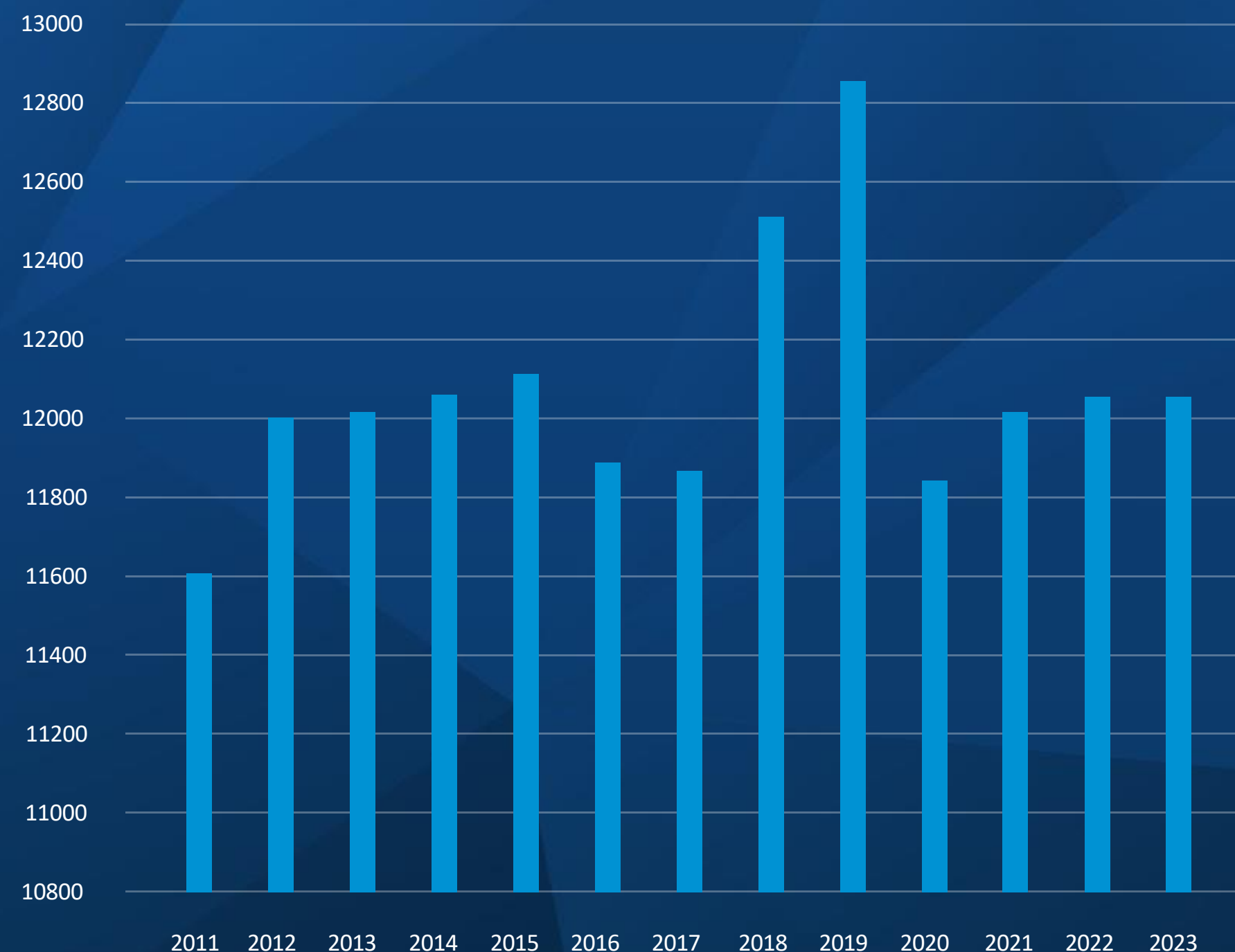
RESEARCH STRUCTURE BY SCIENTIFIC FIELDS AND GENDER

Scientific Field	Total Number	Male %	Women %
Scientific Field	19514	47.1	52.9
Natural Sciences	4129	43.4	56.6
Engineering and Technology	4202	57.6	42.4
Medical Sciences	2736	40.2	59.8
Agricultural Sciences	1231	47.1	52.9
Social Sciences	2718	47	53
Humanities	1646	41.3	58.7

RESEARCH STRUCTURE BY SECTORS AND GENDER, RZS

Sector	Total Number	Male %	Women %
Business Sector	1563	64.6	35.4
Government Sector	3401	37.9	62.1
Higher Education Sector	11695	47.5	52.5

NUMBER OF RESEARCHERS IN THE MINISTRY FUNDING SYSTEM





Top performing talent pool in Serbia – University education

Universities:



18 universities



118 faculties



79 institutes

Research Institutes

Strong background:



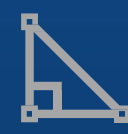
Engineering



IT



Physics



Mathematics

University ecosystem breakdown by majors:



Active students:
249,768

37%

Other

27%

Social Sciences,
Business and Law

16%

Mathematics,
IT & Computing

20%

Engineering
& Manufacturing

Serbia is ranked as **9th** in respect to **Graduates in Science and Engineering** according to Global Innovation Index 2023

(The share of all tertiary graduates in science, manufacturing, engineering and construction over all tertiary graduates)

401-500*

Shanghai Ranking

Top 300*

In Physics and Mathematics

> 50% (approx. 130 K)

STEM students

250,000 STUDENTS
AT FACULTIES
AND HIGHER EDUCATION
INSTITUTIONS IN SERBIA

60,000 STUDENTS
IN THE FIELD OF
INFORMATION
TECHNOLOGY AND
OTHER TECHNICAL FIELDS

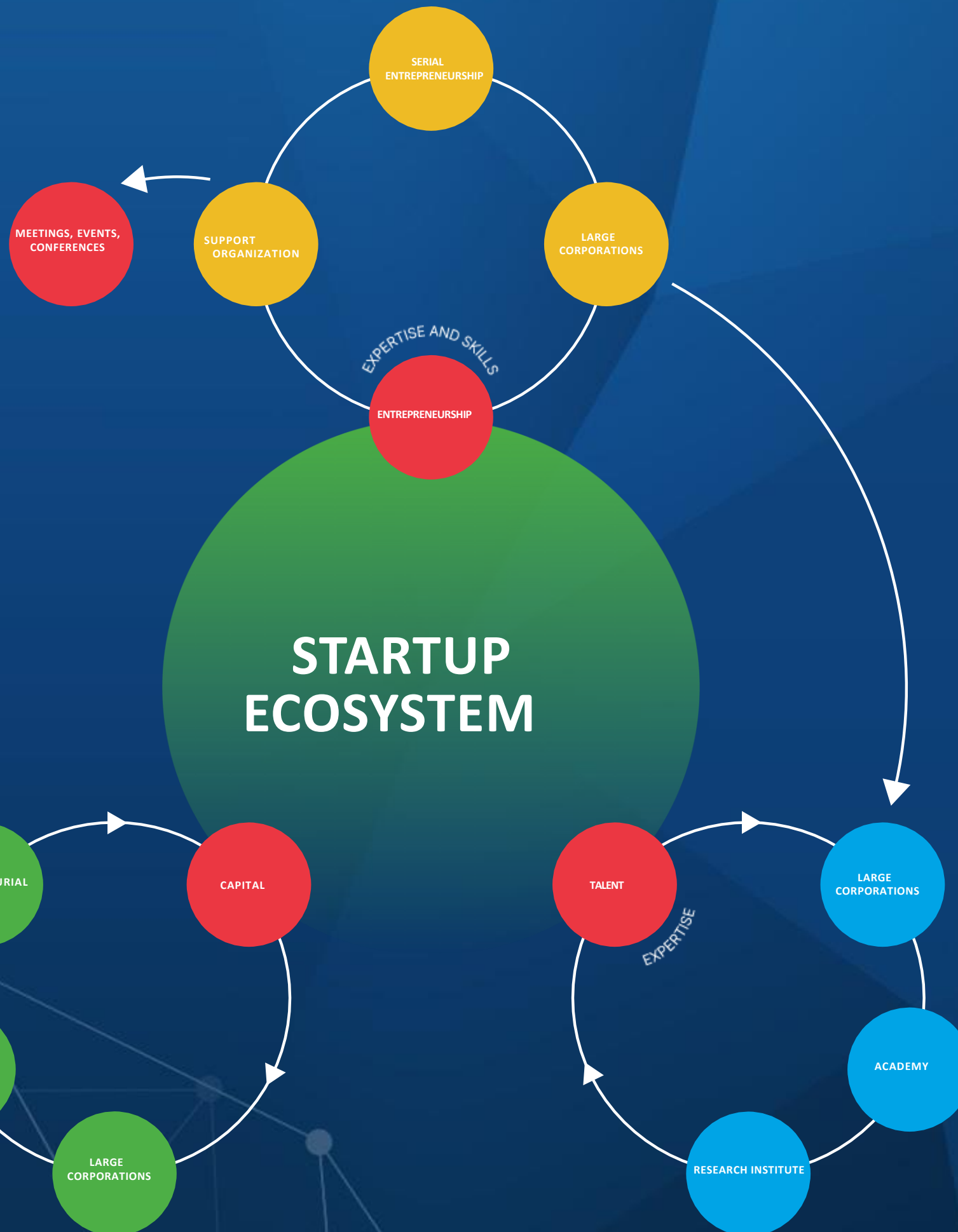
40,000
UNIVERSITY OF
NOVI SAD

83,000
UNIVERSITY OF BELGRADE

14,000
UNIVERSITY OF
KRAGUJEVAC

20,000
UNIVERSITY
OF NIŠ

Sarajevo: 30,860
Split: 25,000
Skopje: 25,220
Podgorica: 17,000
Banja Luka: 15,000



MORE THAN 600
STARTUPS



NEARLY 100 BLOCKCHAIN-BASED
STARTUPS



40 000
DEVELOPERS



VIDEO GAMES CREATED IN SERBIA ARE
PLAYED BY MORE THAN 370 MILLION
PEOPLE WORLDWIDE



4 SCIENCE AND TECHNOLOGY PARKS, IN
BELGRADE, ČAČAK, NIŠ AND NOVI SAD



FROM € 740 MILLION TO € 3.5 BILLION
THE LARGEST EXPORTING INDUSTRY OF
SERBIA

SCIENCE TECHNOLOGY PARKS



STP Kruševac
and
STP Kragujevac
- under construction -



311

COMPANIES



183

STARTUPS



2,377

INNOVATIONS



41

DIGITAL
MEMBERSHIP
COMPANIES



2,982

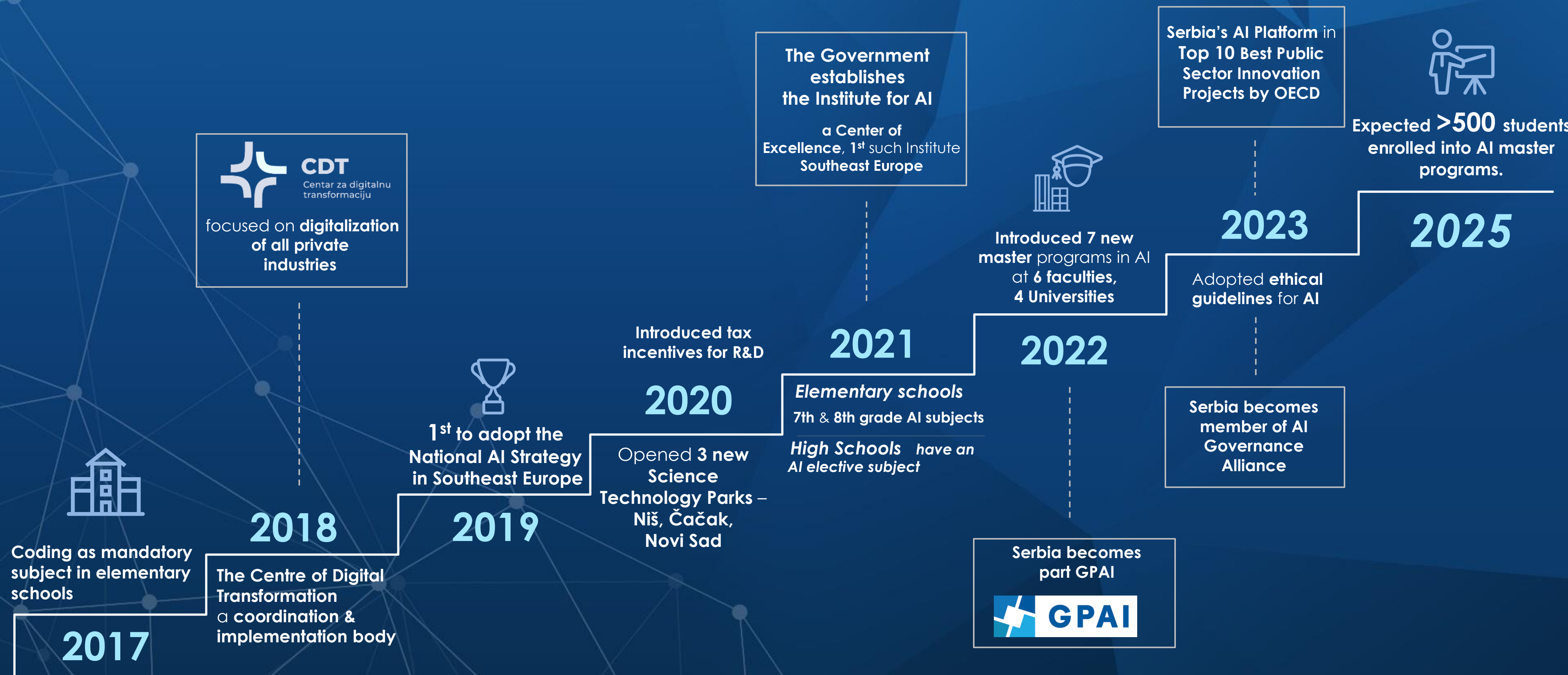
EMPLOYEES



87

IT COMPANIES

Brief overview of AI roadmap of Serbia



National Science fund

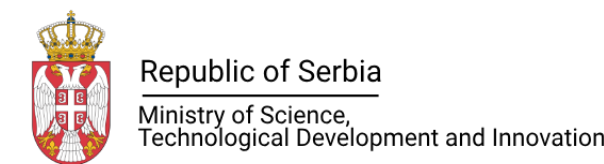
SFRS programs are designed to meet the needs of the scientific community in the Republic of Serbia and challenges of society in general.



81,7 M€

Total budget for 11 programs

Programs are funded by:



MULTILATERAL PROGRAMS

- EU Framework Programs for Research and Innovation Over the past four years, the HEU funding amounted to €19,519,795.75 in 2021, €21,829,023.94 in 2022, €42,082,354.85 in 2023, and €33,213,293.48 in 2024, **totalling €83,431,174.54.**

- EUREKA program
- COST program - European Cooperation in Science and Technology





#EY
ЗА ТЕБЕ

Republic of Serbia

MINISTRY OF SCIENCE,
TECHNOLOGICAL DEVELOPMENT
AND INNOVATION

WE SUPPORT INNOVATORS, RESEARCHERS,
AND ENTREPRENEURS



SAIGE

Innovation Acceleration and Entrepreneurship Growth Project
in the Republic of Serbia

REPUBLIC OF SERBIA
INNOVATION
FUND



Science Fund
of the Republic of Serbia

SERBIA ACCELERATING INNOVATION AND GROWTH ENTREPRENEURSHIP PROJECT – SAIGE

The Republic of Serbia's **joint investment** (MSTDI) through a World Bank loan and technical support amounting to **43 million euros** and non-repayable financial support from the EU through IPA amounting to **41.5 million euros**.

COMPONENT 1

Reform of the scientific research sector (SFRS and MSTDI)

- Science Fund of the Republic of Serbia - 22.5 million euros + DF 16.5 million euros
- Reform of Research Organizations - 8 million euros + DF 5.7 million euros
- Cooperation with the Serbian scientific diaspora - 3.5 million euros

COMPONENT 2

Enterprise acceleration (IF) - 7 million euros + DF 4.7 million euros

COMPONENT 3

Implementation of the project, monitoring, capacity building (MSTDI) - 2 million euros



Funding in total– statistics

	2019	2020	2021	2022	2023
Indicator					
Total RD resources/GDP [%]	0.89	0.91	0.99	0.97	0.95
Budget RD resources/GDP [%]	0.4	0.46	0.42	0.39	0.39

Year	Ministry budget in (RSD)	Annual incresement
2019	19,822,863,227	
2020	21,023,064,609	6%
2021	24,912,174,712	18%
2022	27,002,817,026	8%
2023	33,991,384,071	26%
2024	37,552,617,000	10%

Serbia's financial contributions for research at CERN between 2019 and 2024 [in CHF]

2019	2020	2021	2022	2023	2024	<u>2019 - 2024</u>	Type of contribution
3.034.800	2.808.900	2.865.800	3.002.950	3.211.200	3.444.800	18.368.450	General contribution
		1.643.850	505.800	505.800	4.352	2.659.802	Special Contributions
				64.400	64.400	128.800	Contribution for the increase of electricity price
166.346	148.470	120.835	142.018	238.230	205.890	1.021.789	Participation of our researchers in different experiments (collaborations)
						22.178.841	TOTAL



Researchers from Serbia participate at the experiments:

➤ CMS



➤ ATLAS



➤ ISOLDE



➤ SHINE

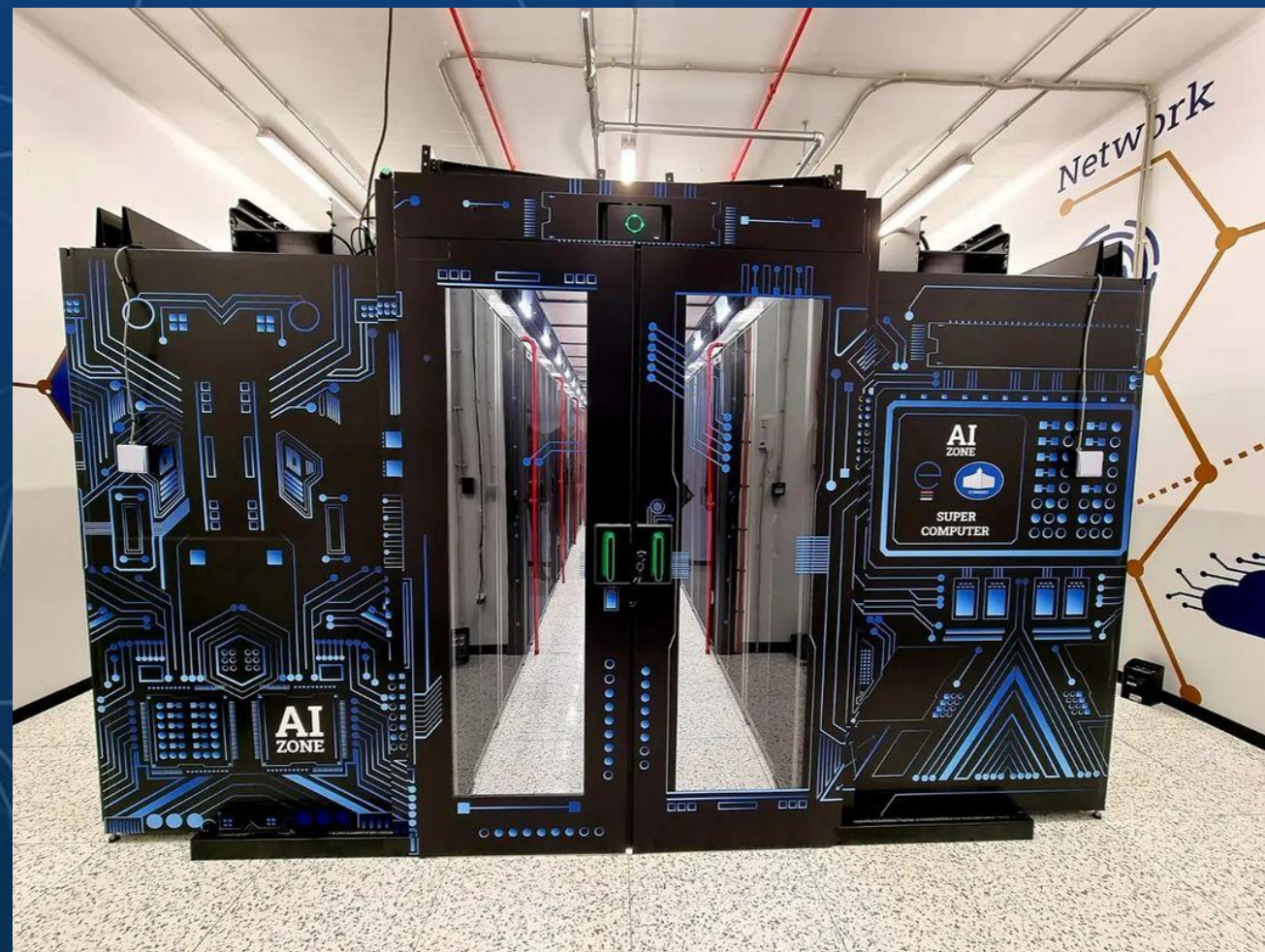


➤ GRID



MoU with CERN: Worldwide LHC Computing Grid

- Memorandum of Understanding signed on December 9, 2023, between CERN, NITRA, and MIT
- for the establishment of a "Tier-1 center" at the State Data Center in Kragujevac.
- -The center is part of the Nordic Data Grid Facility and supports the CMS experiment.
- Part of the global computing infrastructure (WLCG) to store, process, transfer, and analyze LHC data.



By establishing a "Tier-1 center" at the State Data Center in Kragujevac, Serbia becomes one of 7 European countries and 10 worldwide (alongside the USA, Canada, South Korea)